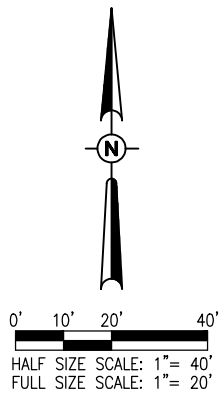


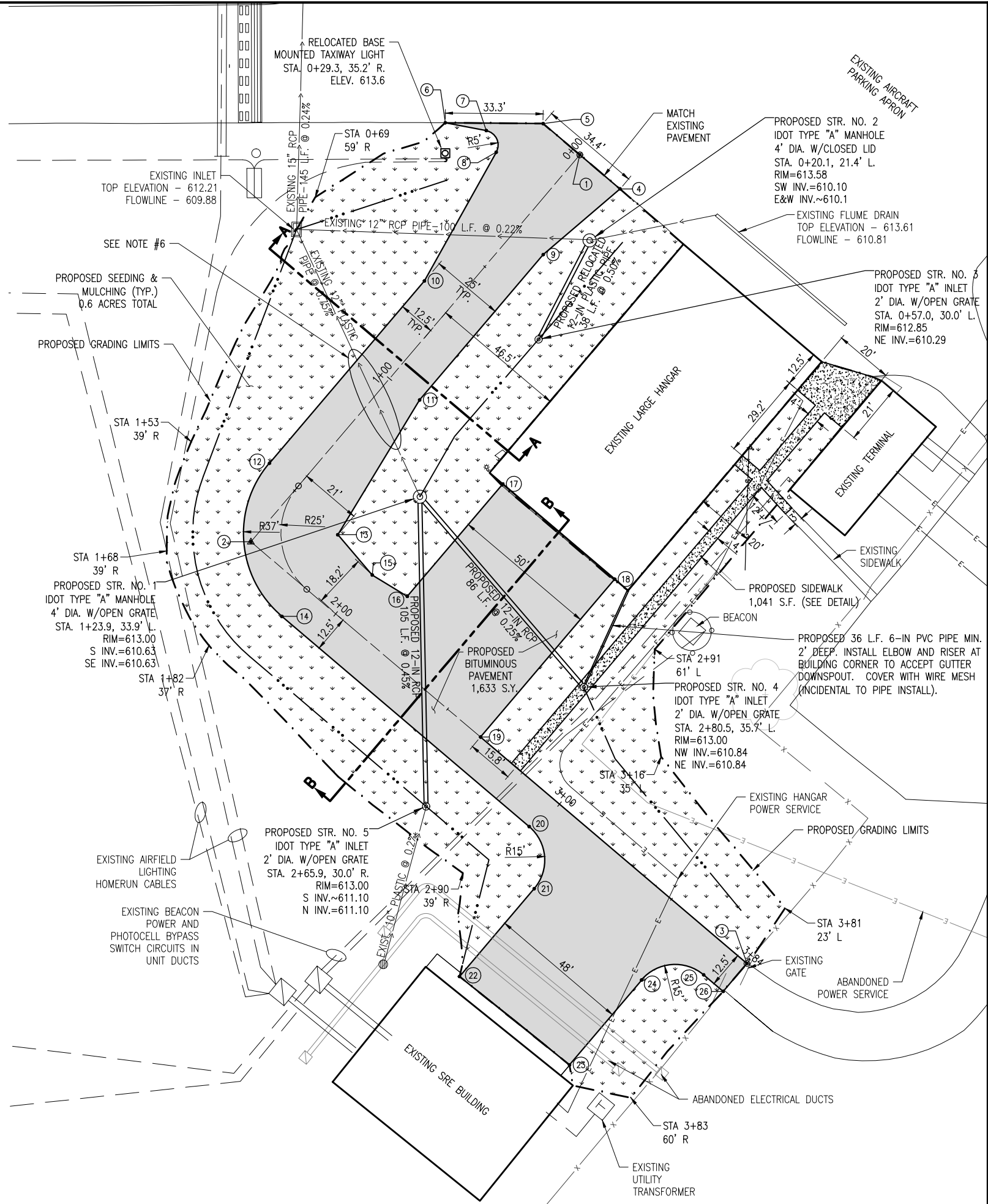
CONSTRUCTION PLAN NOTES

- STRUCTURE NUMBERS 1 & 2 SHALL CONFORM TO IDOT STANDARD 602401-03 "MANHOLE TYPE A".
- STRUCTURE NUMBERS 3, 4, & 5 SHALL CONFORM TO IDOT STANDARD 602301-04 "INLET TYPE A".
- ALL CASTINGS SHALL BE NEENAH R-2553 FOR OPEN GRATE (TYPE G) AND R-1553 FOR CLOSED LID, OR APPROVED EQUAL.
- ALL WORK AND MATERIALS REQUIRED TO MAKE PROPOSED DRAINAGE CONNECTIONS ARE INCIDENTAL TO THE APPLICABLE PROPOSED DRAINAGE PAY ITEM, INCLUDING CONNECTIONS TO EXISTING PIPES OR STRUCTURES.
- FINAL SIDEWALK CONFIGURATION AND JOINTING LAYOUT SHALL BE COORDINATED WITH AND APPROVED BY THE RESIDENT ENGINEER AND AIRPORT MANAGER.
- THE CONTRACTOR SHALL TAKE EXTRA PRECAUTION WHEN CROSSING OR COMPACTING OVER THE EXISTING 12" CORRUGATED PLASTIC PIPE TO REMAIN IN PLACE. ANY PORTIONS OF THE PIPE DAMAGED DURING CONSTRUCTION SHALL BE REPAIRED OR REPLACED AT THE CONTRACTOR'S EXPENSE.

CONTROL POINTS				
POINT #	STATION	OFFSET (FT)	NORTHING	EASTING
1	0+00.00	0'	998514.2984	839685.1479
2	1+67.52	10.35' RT.	998382.5731	839573.1802
3	3+83.73	0'	998239.0686	839742.0073
4	0+00.00	17.94' LT.	998502.6758	839698.8214
5	0+00.00	16.39' RT.	998524.9145	839672.6585
6	0+21.36	41.96' RT.	998525.1969	839639.3419
7	0+14.35	29.6' RT.	998522.5408	839653.2995
8	0+17.73	22.24' RT.	998515.1953	839656.7145
9	0+33.96	12.5' LT.	998480.3307	839672.6806
10	0+66.96	12.5' RT.	998471.3781	839632.2597
11	0+98.88	12.5' LT.	998430.8607	839630.6307
12	1+48.22	12.5' RT.	998409.3362	839579.5235
13	1+67.52	19.34' LT.	998384.9730	839602.7815
14	1+86.82	12.5' RT.	998357.1814	839583.7520
15	2+00.94	18.14' LT.	998371.2773	839614.4886
16	2+14.73	20.35' LT.	998364.0317	839626.4275
17	1+02.36	52.57' LT.	998402.2499	839658.9133
18	2+64.73	70.51' LT.	998369.8663	839697.0113
19	2+64.73	0'	998316.1363	839651.3403
20	2+97.08	12.5' RT.	998285.6609	839667.8928
21	3+12.08	27.5' RT.	998264.5171	839669.6071
22	3+12.08	66.73' RT.	998234.6226	839644.1965
23	3+60.08	65.43' RT.	998204.5256	839681.6113
24	3+60.08	27.5' RT.	998233.4298	839706.1799
25	3+75.08	12.5' RT.	998235.1441	839727.3238
26	3+83.73	12.5' RT.	998229.5444	839733.9116



- LEGEND**
- PROPOSED BITUMINOUS PAVEMENT
 - PROPOSED GRADING, SEEDING, AND MULCHING
 - PROPOSED SIDEWALK
 - PROPOSED STORM SEWER
 - PROPOSED STORM STRUCTURE
 - EXISTING BUILDINGS
 - EXISTING INLET
 - EXISTING MANHOLE
 - EXISTING STORM SEWER
 - EXISTING FLUME DRAIN
 - EXISTING AIRFIELD LIGHTING CABLES
 - EXISTING ELECTRICAL POWER CABLES
 - EXISTING GAS
 - EXISTING WATER
 - EXISTING TELEPHONE
 - EXISTING FENCE



Offices Nationwide
www.hanson-inc.com

Hanson Professional Services Inc.
1525 S. 6th Street
Springfield, IL 62703
phone: 217-788-2450
fax: 217-788-2503

Illinois Licensed
Professional Service Corporation
#184-001084

SHELBY COUNTY AIRPORT

P. O. BOX 295
ASSUMPTION, IL. 62510

CONSTRUCT ACCESS
TO SNOW REMOVAL
EQUIPMENT STORAGE
BUILDING

IDA No: 2H0-4341
SBG No: 3-17-SBGP-XX

CONTRACT No: SE005

NO.	DATE	DESCRIPTION	
		DES	DWN / REV

ISSUE: DECEMBER 4, 2014

PROJECT NO: 13A0082

CAD FILE: C-121CON.DWG

DESIGN BY: KBS 11/14/2014

DRAWN BY: MLH 11/14/2014

REVIEWED BY: RAW 12/04/2014

SHEET TITLE

CONSTRUCTION
PLAN