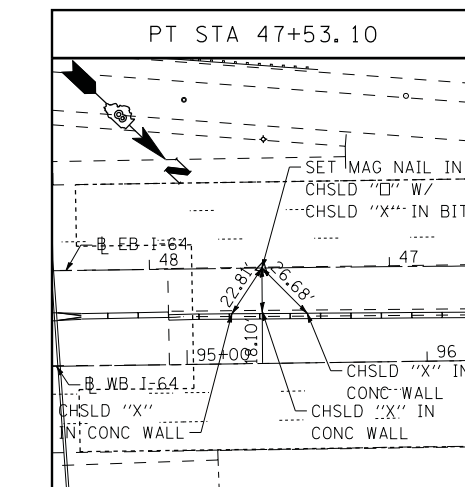
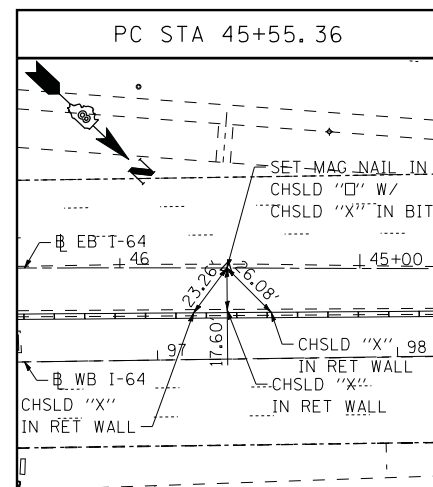
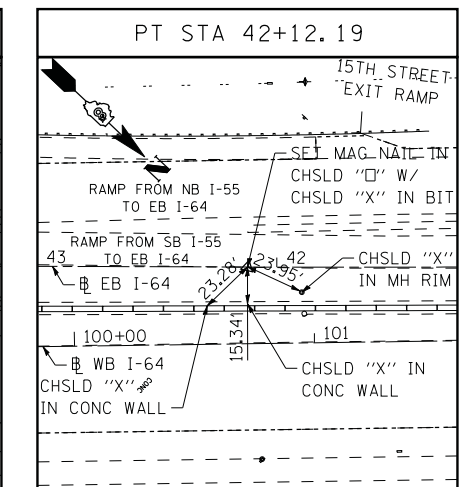
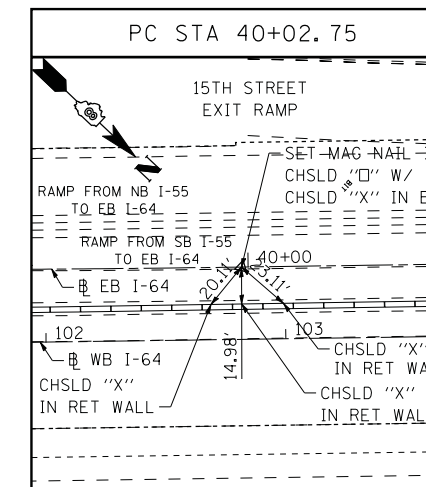
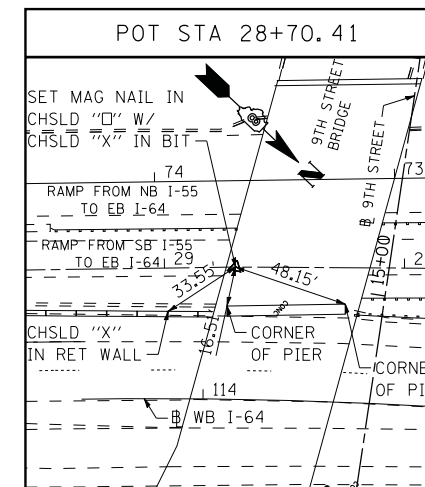
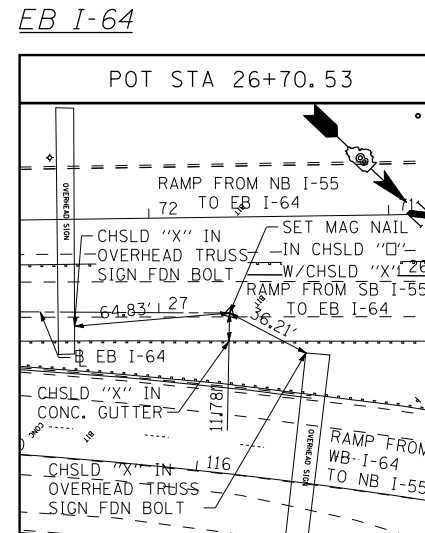
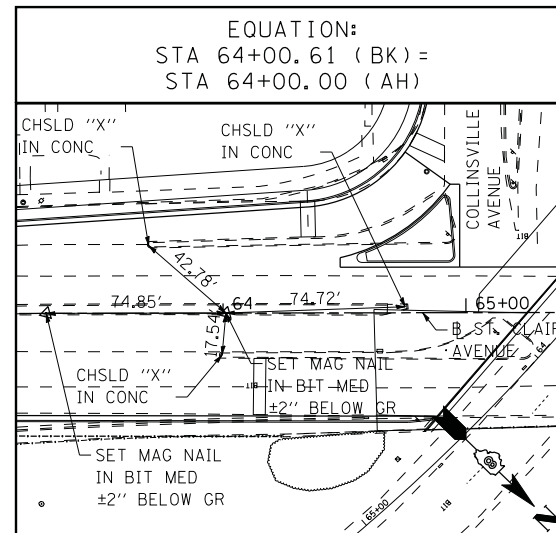
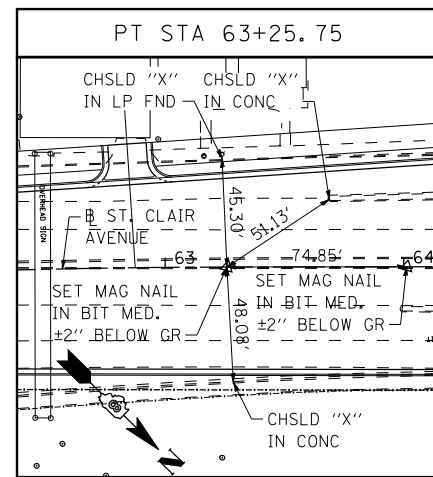
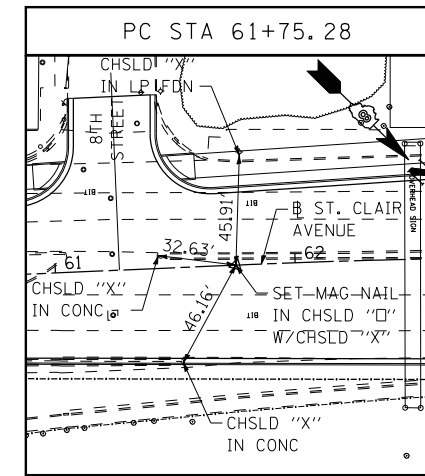
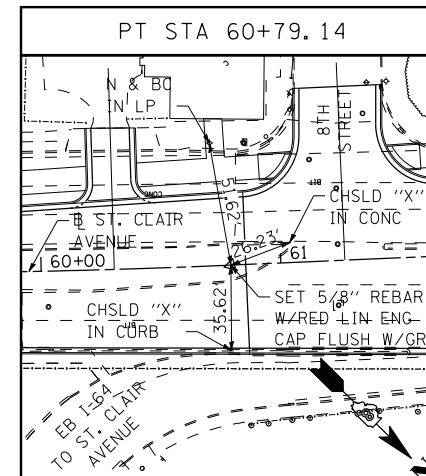
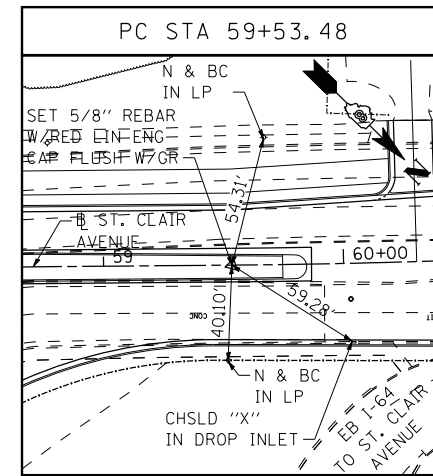
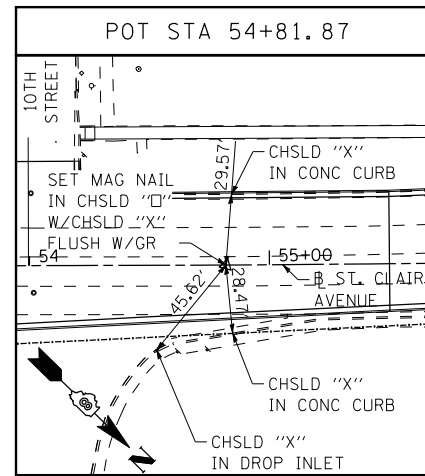
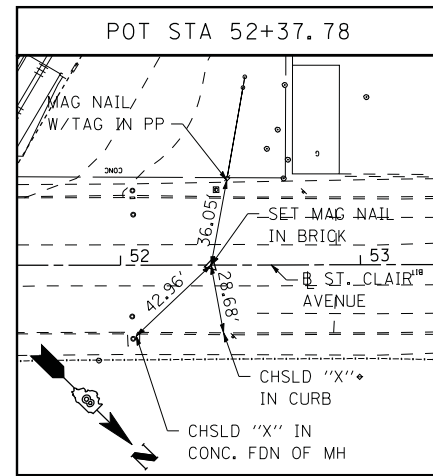


ST. CLAIR AVENUE BASELINE



NOTE:
INFORMATION ON THIS SHEET
IS FROM CONTRACT 76C51.

STATE OF ILLINOIS
DEPARTMENT OF TRANSPORTATION

ALIGNMENT, TIES, AND BENCHMARKS

F.A.U. RTE.	SECTION	COUNTY	TOTAL SHEETS	SHEET NO.
9214	82-1-12LS	ST. CLAIR	29	8
CONTRACT NO. 76F35				

SCALE: NONE SHEET NO. 4 OF 4 SHEETS STA. ----- TO STA. -----

FED. ROAD DIST. NO. [ILLINOIS] FED. AID PROJECT

6/8/2011 10:09:50 AM

FILE NAME = DBTRI-76C51-sht-aligntiebm-01-04.dgn	USER NAME = jlt	DESIGNED - loc	REVISED -
MODEL NAME = DBTRI-76C51-sht-aligntiebm-04	PLOT SCALE = 1:40	DRAWN - jof	REVISED -
PLOT DATE = 6/8/2011	DATE = 03/31/11	CHECKED - gbb	REVISED -

P:\08-0030 CTE TRILEVEL\900.CAD\901_DRAWING\08.CONTRACT\SHEET\CTV\GENERAL\DBTRI-76C51-SHT-ALIGN-TIEBM-01-04.DGN