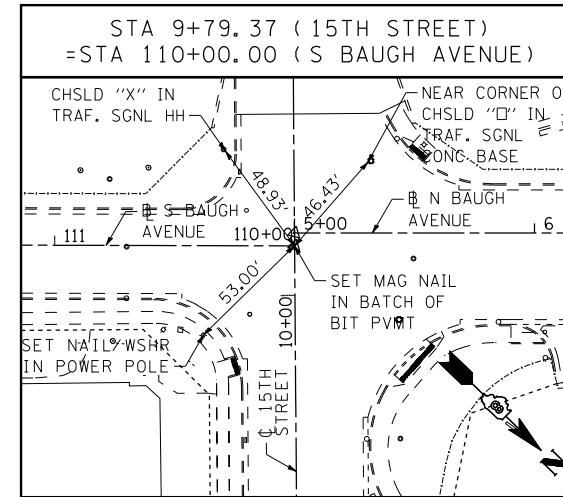
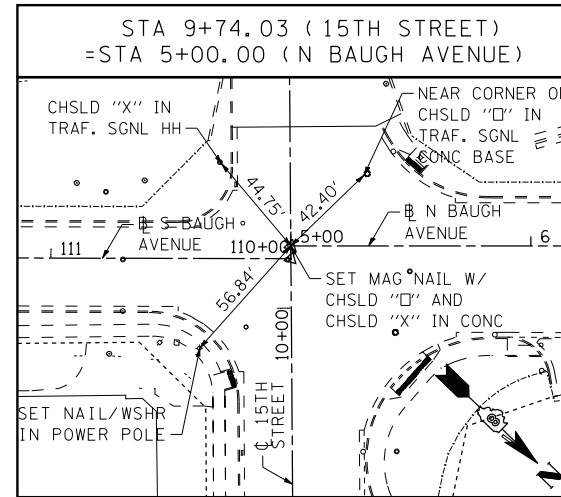
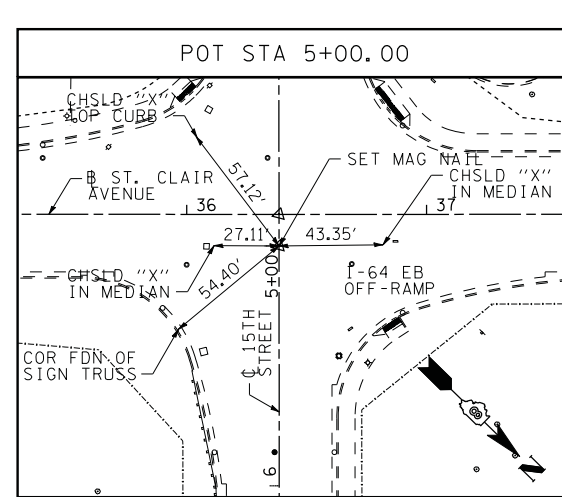
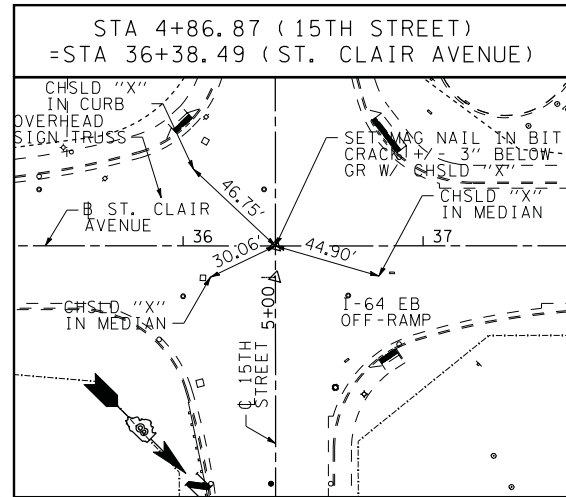
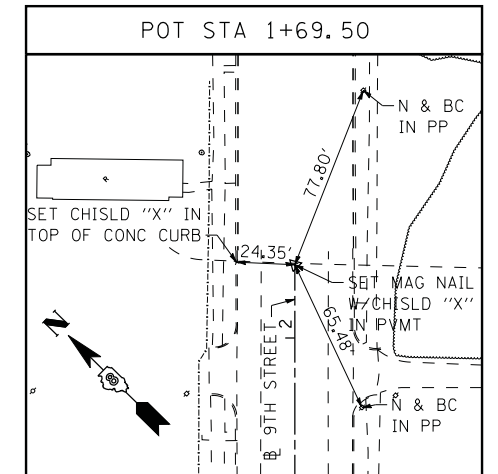


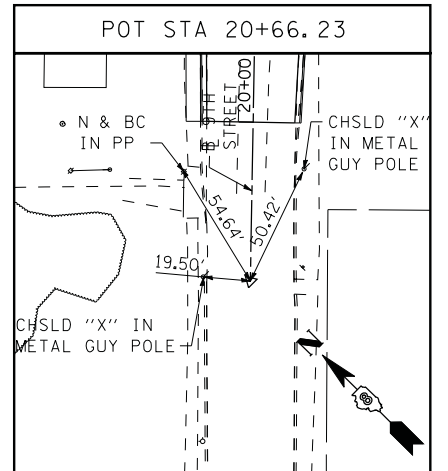
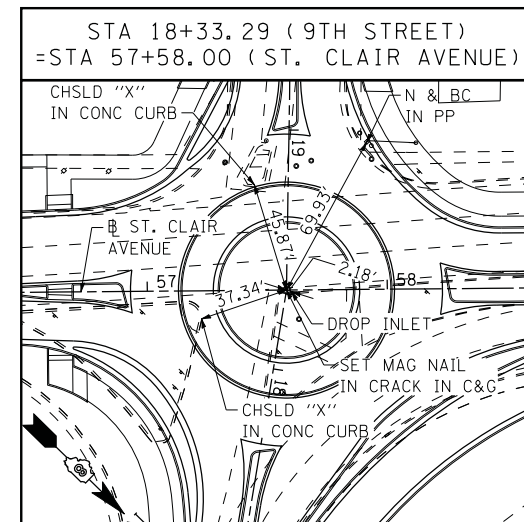
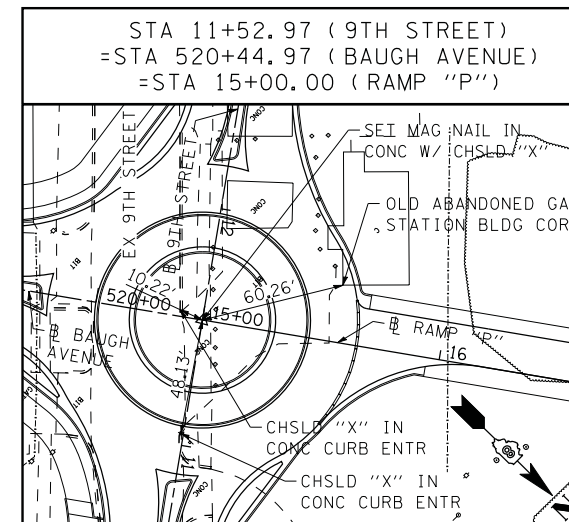
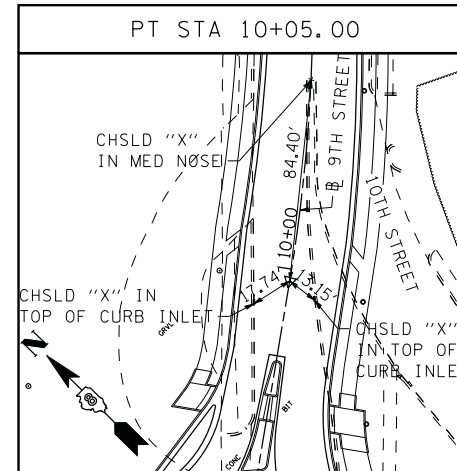
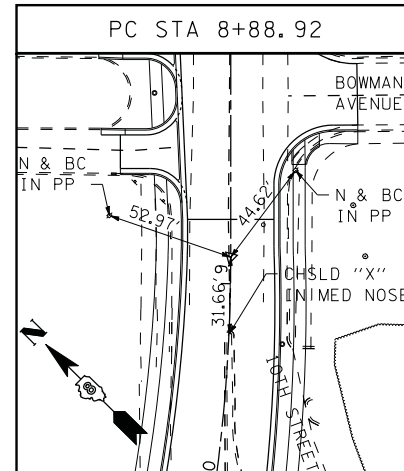
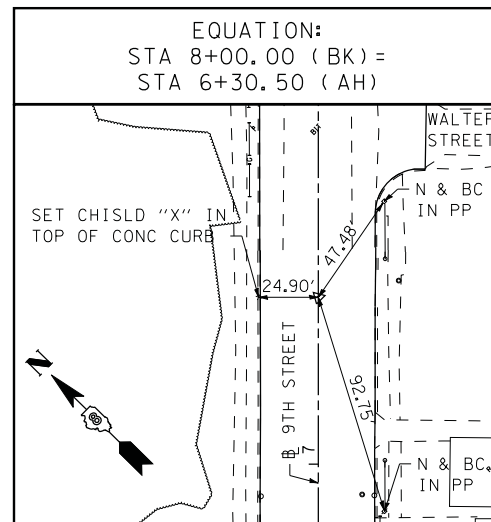
15TH STREET CENTERLINE



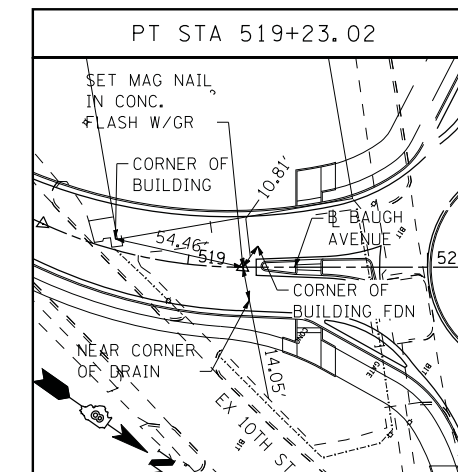
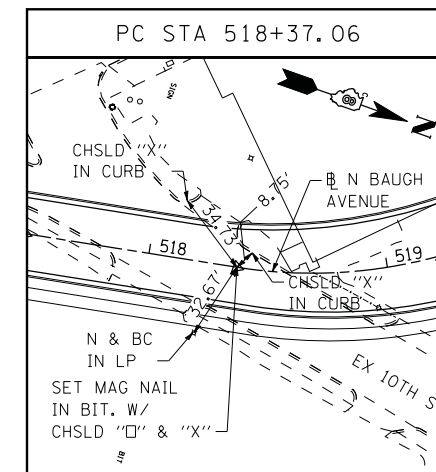
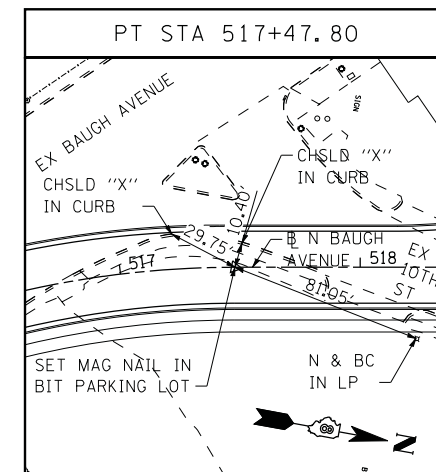
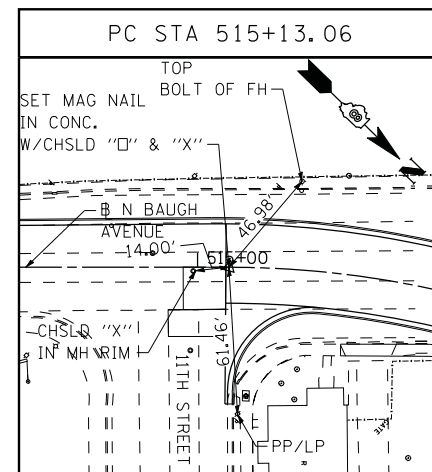
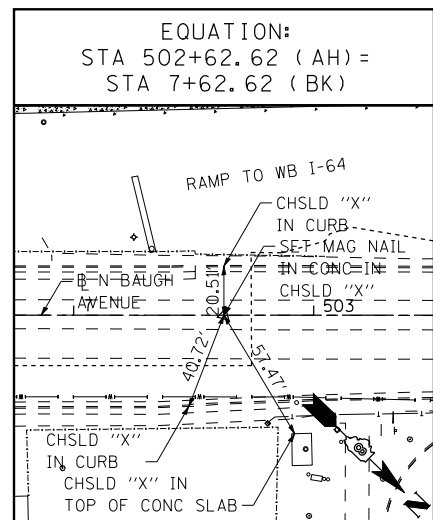
9TH STREET BASELINE



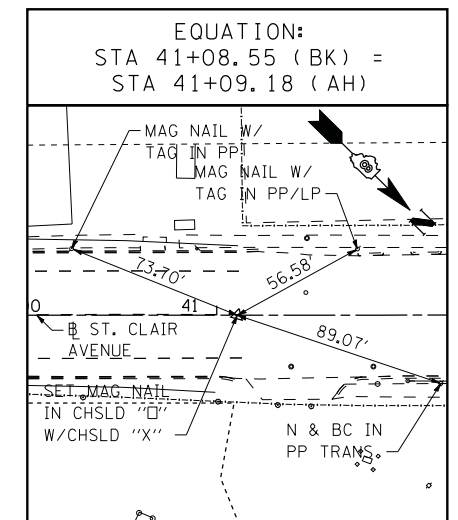
9TH STREET BASELINE



BAUGH AVENUE BASELINE



ST. CLAIR AVENUE BASELINE



NOTE:
INFORMATION ON THIS SHEET
IS FROM CONTRACT 76C51.

STATE OF ILLINOIS
DEPARTMENT OF TRANSPORTATION

ALIGNMENT, TIES, AND BENCHMARKS

FILE NAME = DBTRI-76C51-sht-aligntiebm-01-04.dgn
USER NAME = jlt
MODEL NAME = DBTRI-76C51-sht-aligntiebm-03
PLOT SCALE = 1:40
PLOT DATE = 6/8/2011

DESIGNED - LDC	REVISED -
DRAWN - JDF	REVISED -
CHECKED - GEB	REVISED -
DATE - 03/31/11	REVISED -

SCALE: NONE	SHEET NO. 3 OF 4 SHEETS	STA. ----- TO STA. -----
FA.U. RTE. 9166	SECTION 82-1-12LS-2	COUNTY ST. CLAIR
		TOTAL SHEETS 29
		SHEET NO. 7
		CONTRACT NO. 76F36
FED. ROAD DIST. NO. [ILLINOIS] FED. AID PROJECT		