

PART OF THE SW 1/4 OF SECTION 7, T2N, R9W OF THE 3RD PM, ST. CLAIR COUNTY, ILLINOIS



PROP. CURVE 64W55S-2
 PI STA. = 126+23.96
 $\Delta = 69^\circ 27' 35''$ (LT)
 $D = 7^\circ 34' 58''$
 $R = 755.61'$
 $T = 523.79'$
 $L = 916.03'$
 $E = 163.79'$
 P.C. STA. = 121+00.17
 P.T. STA. = 130+16.20

PROP. CURVE 64W55S-3
 PI STA. = 131+97.14
 $\Delta = 17^\circ 49' 53''$ (LT)
 $D = 4^\circ 58' 04''$
 $R = 1,153.36'$
 $T = 180.94'$
 $L = 358.95'$
 $E = 14.11'$
 P.C. STA. = 130+16.20
 P.T. STA. = 133+75.15

PROP. CURVE 55N64E-2
 PI STA. = 57+08.92
 $\Delta = 2^\circ 17' 42''$ (RT)
 $D = 1^\circ 08' 45''$
 $R = 5,000.00'$
 $T = 100.16'$
 $L = 200.29'$
 $E = 1.00'$
 P.C. STA. = 56+08.76
 P.T. STA. = 58+09.05

PROP. CURVE 55N-2
 PI STA. = 62+39.34
 $\Delta = 10^\circ 09' 06''$ (LT)
 $D = 1^\circ 50' 43''$
 $R = 3,105.00'$
 $T = 275.79'$
 $L = 550.14'$
 $E = 12.22'$
 P.C. STA. = 59+63.55
 P.T. STA. = 65+13.69

PROP. CURVE RAMPJ-1
 PI STA. = 15+76.18
 $\Delta = 99^\circ 13' 34''$ (LT)
 $D = 52^\circ 05' 13''$
 $R = 110.00'$
 $T = 129.31'$
 $L = 190.50'$
 $E = 59.77'$
 P.C. STA. = 14+46.88
 P.T. STA. = 16+37.38

PROP. CURVE RAMPJ-2
 PI STA. = 17+17.62
 $\Delta = 71^\circ 12' 54''$ (LT)
 $D = 51^\circ 07' 48''$
 $R = 112.06'$
 $T = 80.25'$
 $L = 139.28'$
 $E = 25.77'$
 P.C. STA. = 16+37.38
 P.T. STA. = 17+76.66

PROP. CURVE RAMPJ-3
 PI STA. = 22+83.56
 $\Delta = 6^\circ 23' 44''$ (LT)
 $D = 2^\circ 39' 52''$
 $R = 2,150.42'$
 $T = 120.15'$
 $L = 240.04'$
 $E = 3.35'$
 P.C. STA. = 21+63.42
 P.T. STA. = 24+03.46

PROP. CURVE RAMP I-1
 PI STA. = 14+30.63
 $\Delta = 117^\circ 56' 48''$ (RT)
 $D = 63^\circ 39' 43''$
 $R = 90.00'$
 $T = 149.63'$
 $L = 185.27'$
 $E = 84.61'$
 P.C. STA. = 12+81.01
 P.T. STA. = 14+66.28

PROP. CURVE RAMP I-2
 PI STA. = 17+79.67
 $\Delta = 13^\circ 22' 38''$ (LT)
 $D = 5^\circ 43' 46''$
 $R = 1,000.00'$
 $T = 117.27'$
 $L = 233.47'$
 $E = 6.85'$
 P.C. STA. = 16+62.40
 P.T. STA. = 18+95.88

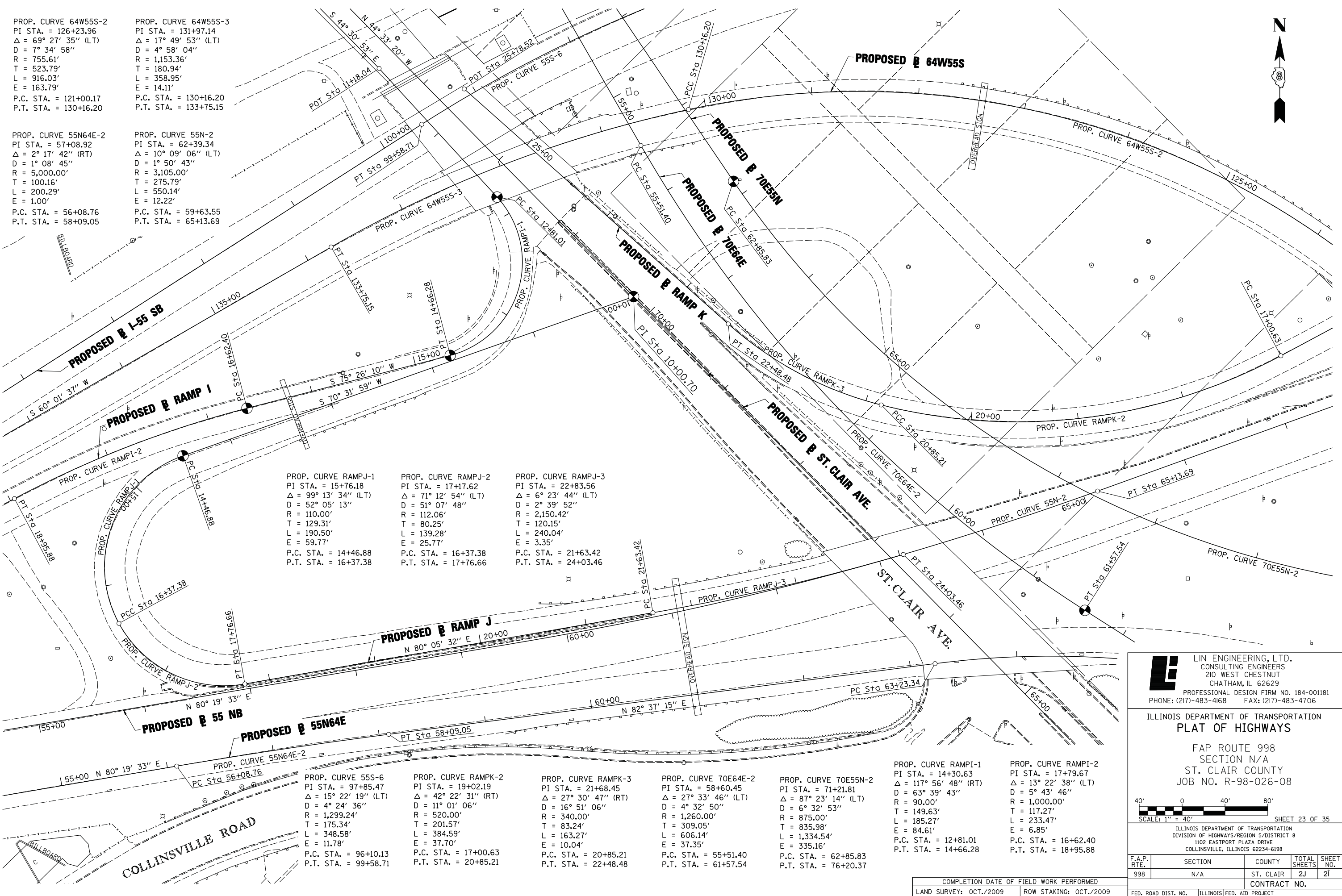
PROP. CURVE 55S-6
 PI STA. = 97+85.47
 $\Delta = 15^\circ 22' 19''$ (LT)
 $D = 4^\circ 24' 36''$
 $R = 1,299.24'$
 $T = 175.34'$
 $L = 348.58'$
 $E = 11.78'$
 P.C. STA. = 96+10.13
 P.T. STA. = 99+58.71

PROP. CURVE RAMPK-2
 PI STA. = 19+02.19
 $\Delta = 42^\circ 22' 31''$ (RT)
 $D = 11^\circ 01' 06''$
 $R = 520.00'$
 $T = 201.57'$
 $L = 384.59'$
 $E = 37.70'$
 P.C. STA. = 17+00.63
 P.T. STA. = 20+85.21

PROP. CURVE RAMPK-3
 PI STA. = 21+68.45
 $\Delta = 27^\circ 30' 47''$ (RT)
 $D = 16^\circ 51' 06''$
 $R = 340.00'$
 $T = 83.24'$
 $L = 163.27'$
 $E = 10.04'$
 P.C. STA. = 20+85.21
 P.T. STA. = 22+48.48

PROP. CURVE 70E64E-2
 PI STA. = 58+60.45
 $\Delta = 27^\circ 33' 46''$ (LT)
 $D = 4^\circ 32' 50''$
 $R = 1,260.00'$
 $T = 309.05'$
 $L = 606.14'$
 $E = 37.35'$
 P.C. STA. = 55+51.40
 P.T. STA. = 61+57.54

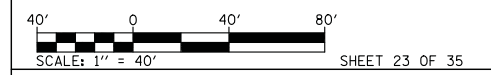
PROP. CURVE 70E55N-2
 PI STA. = 71+21.81
 $\Delta = 87^\circ 23' 14''$ (LT)
 $D = 6^\circ 32' 53''$
 $R = 875.00'$
 $T = 835.98'$
 $L = 1,334.54'$
 $E = 335.16'$
 P.C. STA. = 62+85.83
 P.T. STA. = 76+20.37



Lin Engineering, Ltd.
 CONSULTING ENGINEERS
 210 WEST CHESTNUT
 CHATHAM, IL 62629
 PROFESSIONAL DESIGN FIRM NO. 184-001181
 PHONE: (217)-483-4168 FAX: (217)-483-4706

ILLINOIS DEPARTMENT OF TRANSPORTATION
PLAT OF HIGHWAYS

FAP ROUTE 998
 SECTION N/A
 ST. CLAIR COUNTY
 JOB NO. R-98-026-08



ILLINOIS DEPARTMENT OF TRANSPORTATION
 DIVISION OF HIGHWAYS/REGION 5/DISTRICT 8
 1102 EASTPORT PLAZA DRIVE
 COLLINSVILLE, ILLINOIS 62234-6198

F.A.P. RTE.	SECTION	COUNTY	TOTAL SHEETS	SHEET NO.
998	N/A	ST. CLAIR	2J	21

CONTRACT NO.

COMPLETION DATE OF FIELD WORK PERFORMED	
LAND SURVEY: OCT./2009	ROW STAKING: OCT./2009

PLOT DATE = 10/19/2009
 FILE NAME = \$FILEL\$
 PLOT SCALE = \$SCALE\$
 USER NAME = \$USER\$