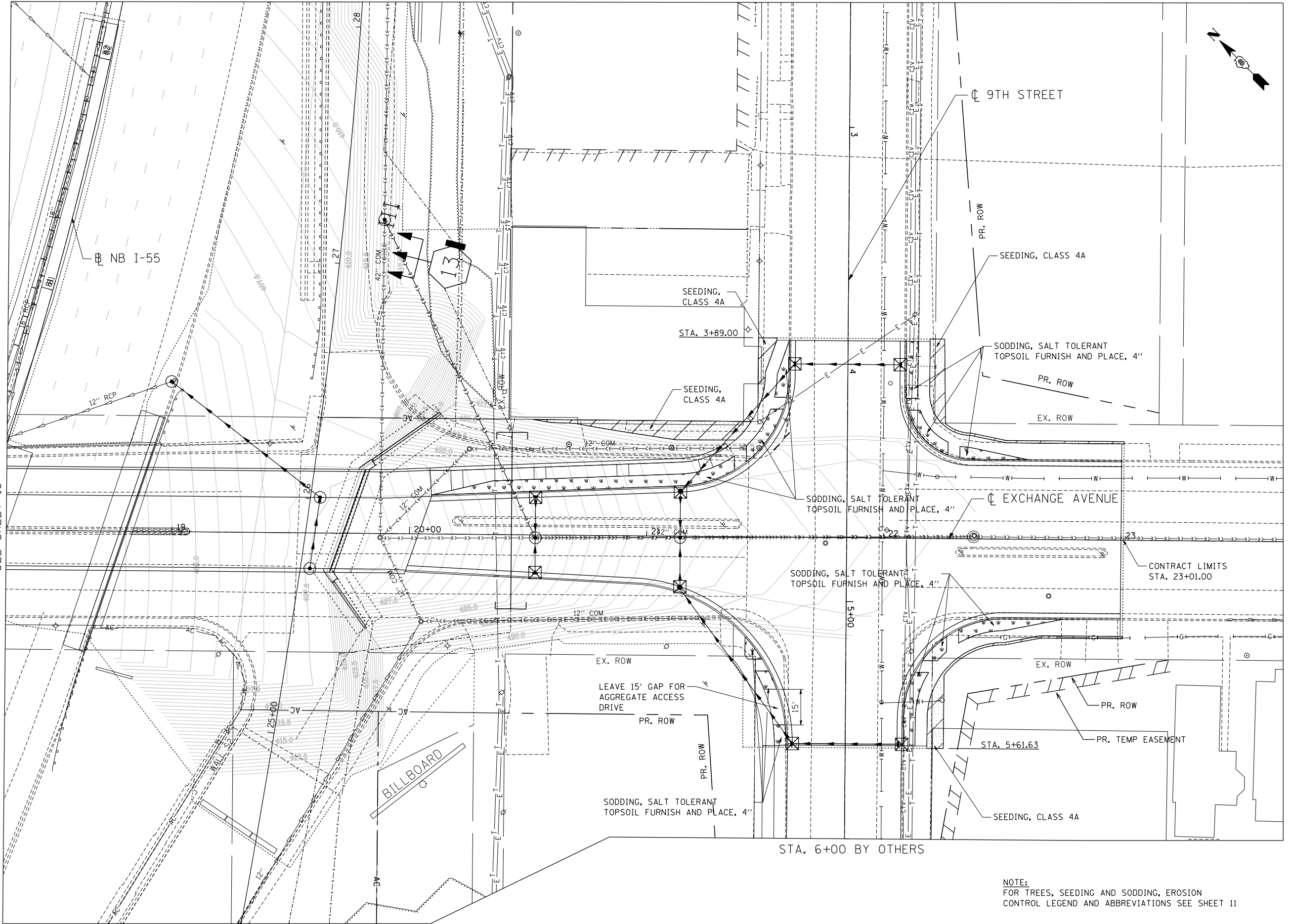


\\DBTRI-76C51-MOTIFL.DGN, \\DBTRI-76C51-LAYOUT.DGN, \\DBTRI-40-BORDER.DGN, \\DBTRI-40-LS-1-LANDSCAP-1830.DGN
 11-28-2012, 14:35:43 BONDHUJO \\FS-004\AMVAUL.D-TRANS.07.2202.28868-001\CIVIL\CA099-ALL CONTRACTS\NTRI\SHEETS CONTRACT 76F40\0BTRI-40-SHT-LANDSCAP-1830.DGN

MATCH LINE 18+30
 SEE SHEET 15



NOTE:
 FOR TREES, SEEDING AND SODDING, EROSION
 CONTROL LEGEND AND ABBREVIATIONS SEE SHEET 11

FILE NAME =
 #FILEL#

USER NAME = #USER*
 PLOT SCALE = #SCALE*
 PLOT DATE = #DATE*

DESIGNED - JM
 DRAWN - JB
 CHECKED - ACL
 DATE - 08/03/12

REVISED -
 REVISED -
 REVISED -
 REVISED -

STATE OF ILLINOIS
DEPARTMENT OF TRANSPORTATION

PROPOSED LANDSCAPING PLANS

SCALE: 1"=20' SHEET NO. 9 OF 10 SHEETS STA. TO STA.

F.A.U. RTE.	SECTION	COUNTY	TOTAL SHEETS	SHEET NO.
9153	82-ILS-1	ST. CLAIR	37	18
CONTRACT NO. 76F40				
FED. ROAD DIST. NO. ILLINOIS FED. AID PROJECT				



TENG & ASSOCIATES, INC.
 ENGINEERS/ARCHITECTS/PLANNERS
 CHICAGO, ILLINOIS