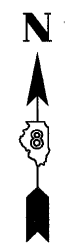


"A"
 FISCHER SCHEIN CO'S SUBD
 OF LOTS 33 & 34 AND PARTS
 OF LOTS 35, 39, & 40 OF BLOCK 17
 ILLINOIS CITY EAST ST. LOUIS ILLS.
 PLAT BOOK P PAGE 56
 RECORDED 27th JULY 1910

"B"
 ILLINOIS CITY
 PLAT BOOK E PAGE 301 & 302
 RECORDED JULY 2nd 1825

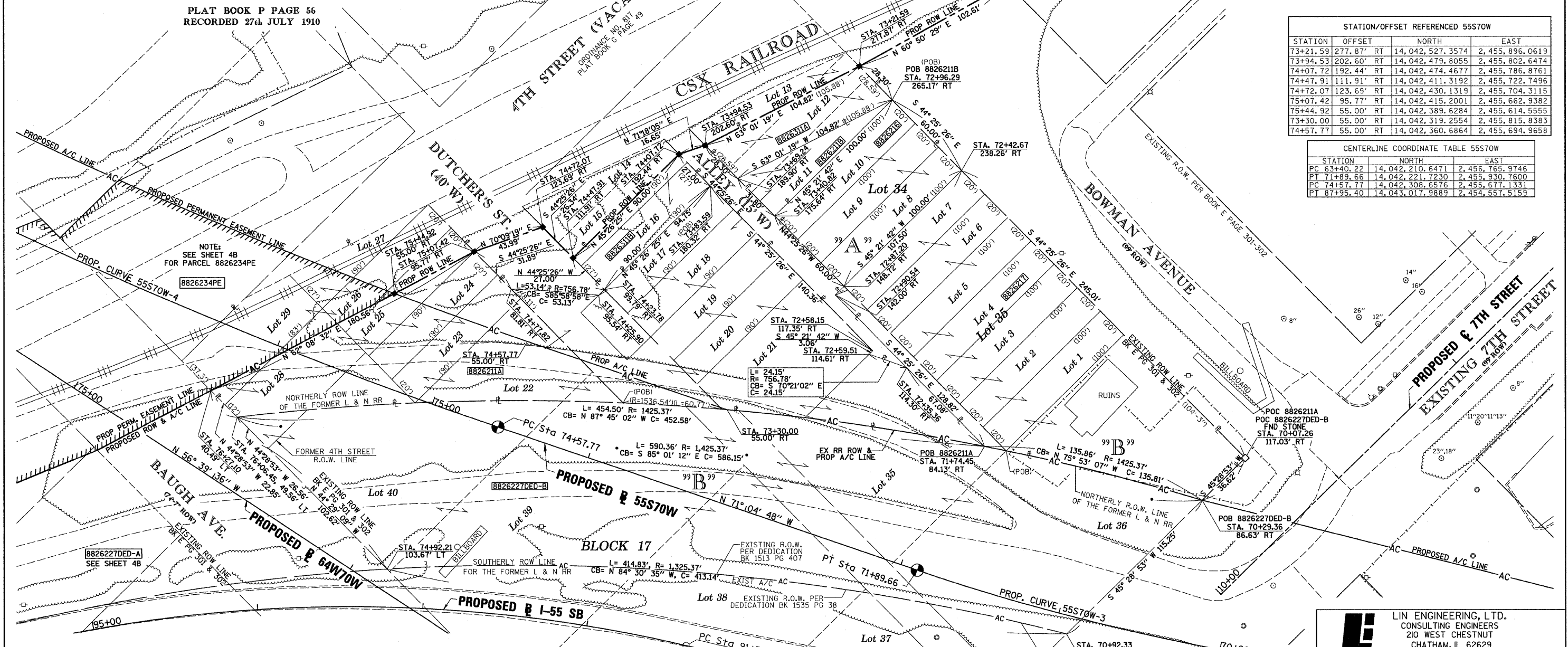
PROP. CURVE 55S70W-3
 PI STA. = 67+79.76
 Δ = 36° 19' 13" (RT)
 T = 439.54'
 L = 849.44'
 R = 1,340.00'
 C = 835.29'
 C.B. = N 89° 14' 25" W
 P.C. STA = 63+40.22
 P.T. STA = 71+89.66

PROP. CURVE 55S70W-4
 PI STA. = 81+39.12
 Δ = 26° 52' 21" (RT)
 T = 681.35'
 L = 1,337.63'
 R = 2,852.00'
 C = 1,325.40'
 C.B. = N 57° 38' 38" W
 P.C. STA = 74+57.77
 P.T. STA = 87+95.40



STATION/OFFSET REFERENCED 55S70W				
STATION	OFFSET		NORTH	EAST
73+21.59	277.87'	RT	14,042,527.3574	2,455,896.0619
73+94.53	202.60'	RT	14,042,479.8055	2,455,802.6474
74+07.72	192.44'	RT	14,042,474.4677	2,455,786.8761
74+47.91	111.91'	RT	14,042,411.3192	2,455,722.7496
74+72.07	123.69'	RT	14,042,430.1319	2,455,704.3115
75+07.42	95.77'	RT	14,042,415.2001	2,455,662.9382
75+44.92	55.00'	RT	14,042,389.6284	2,455,614.5555
73+30.00	55.00'	RT	14,042,319.2554	2,455,815.8383
74+57.77	55.00'	RT	14,042,360.6864	2,455,694.9658

CENTERLINE COORDINATE TABLE 55S70W			
STATION	NORTH	EAST	
PC 63+40.22	14,042,210.6471	2,456,765.9746	
PT 71+89.66	14,042,221.7230	2,455,930.7600	
PC 74+57.77	14,042,308.6576	2,455,677.1331	
PT 87+95.40	14,043,017.9889	2,454,557.5159	



NOTE:
 SEE SHEET 4B FOR PARCELS 8826227DED-A
 & 8826227DED-B PARCEL TABLE INFORMATION

PARCEL NO.	OWNER	TOTAL HOLDING ACRES	FEE SIMPLE ACQUISITION		REMAINDER ACRES	PERMANENT TAX NUMBER	PROPERTY ACQUIRED BY
			GROSS ACRES	SO. FT.			
8826211	CSX TRANSPORTATION, INC. TITLE REPORT NO. SC-5633.3, SC-5456.0 & SC-5438.0 TITLE REPORT NO. BK 2542 PG 2128-2130, BK 2508 PG 662, BK 2509 PG 2300, BK 2509 PG 2347, BK 1055 PG 187	0.7466	A=0.7101 B=0.0365	A=30,934 B=1,590		02-07-0-306-017 02-07-0-306-018 02-07-0-306-019 02-07-0-306-020 02-07-0-306-021 02-07-0-306-022 02-07-0-306-023 02-07-0-306-024 02-07-0-500-004(p1)	
8826216	MID AMERICA REAL ESTATE & DEVELOPMENT, INC. TITLE REPORT NO. SC-5461.0 BOOK 3625 PAGE 1907 & BOOK 3320 PAGE 1474	0.1377	0.1377	6,000	0.0000	02-07-0-306-037	
8826217	ARROW REALTY, INC. TITLE REPORT NO. SC-5462.0 BOOK 3324 PAGE 951	0.5066	0.5066	22,070	0.0000	02-07-0-306-038	
8826311	CITY OF EAST ST. LOUIS, ST. CLAIR COUNTY, ILLINOIS TITLE REPORT NO. SC-5425.0, BOOK 1054 PAGE 296	0.1208	A=0.0650 B=0.0558	A=2,830 B=2,430	0.0000	NONE	

* SEE TOTAL HOLDING AREA SOURCE TABLE ON SHEET 2

STATE OF ILLINOIS)
) SS
 COUNTY OF)
 I, GEORGE L. WOODS, AN ILLINOIS PROFESSIONAL LAND SURVEYOR,
 STATE THAT I HAVE SURVEYED OR DIRECTED THE SURVEY OF THE PLAT
 OF HIGHWAY SHOWN HEREON AND THAT THIS PROFESSIONAL SERVICE CONFORMS
 TO THE CURRENT ILLINOIS MINIMUM STANDARDS FOR A BOUNDARY SURVEY FOR THE
 PROPOSED PARCEL(S) TO BE ACQUIRED BY THE STATE OF ILLINOIS, DEPARTMENT OF
 TRANSPORTATION, SHOWN HEREON.
 DATED _____
 GEORGE L. WOODS, PLS NO. 3015
 LICENSE EXPIRATION DATE: 11/30/2010

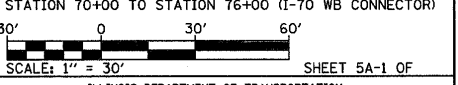


STATIONING SHOWN HEREON REFERENCED TO:
 55S70W = (70 WB)

COMPLETION DATE OF FIELD WORK PERFORMED
 LAND SURVEY: _____ ROW STAKING: _____

LI LIN ENGINEERING, LTD.
 CONSULTING ENGINEERS
 210 WEST CHESTNUT
 CHATHAM, IL 62629
 PROFESSIONAL DESIGN FIRM NO. 184-001181
 PHONE: (217)-483-4168 FAX: (217)-483-4706

ILLINOIS DEPARTMENT OF TRANSPORTATION
 PLAT OF HIGHWAYS
 FAP ROUTE 998
 SECTION N/A
 ST. CLAIR COUNTY
 JOB NO. R-98-026-08
 STATION 70+00 TO STATION 76+00 (I-70 WB CONNECTOR)



SHEET 5A-1 OF
 ILLINOIS DEPARTMENT OF TRANSPORTATION
 DIVISION OF HIGHWAYS/REGION 5/DISTRICT 8
 1102 EASTPORT PLAZA DRIVE
 COLLINGSVILLE, ILLINOIS 62234-6198

F.A.U. RTE.	SECTION	COUNTY	TOTAL SHEETS	SHEET NO.
9153	82-11S-1	ST. CLAIR	37	30

CONTRACT NO. 76F40

PLOT DATE = 7/28/2009
 FILE NAME = #FEILEL#
 PLOT SCALE = #SCALE#
 USER NAME = #USER#