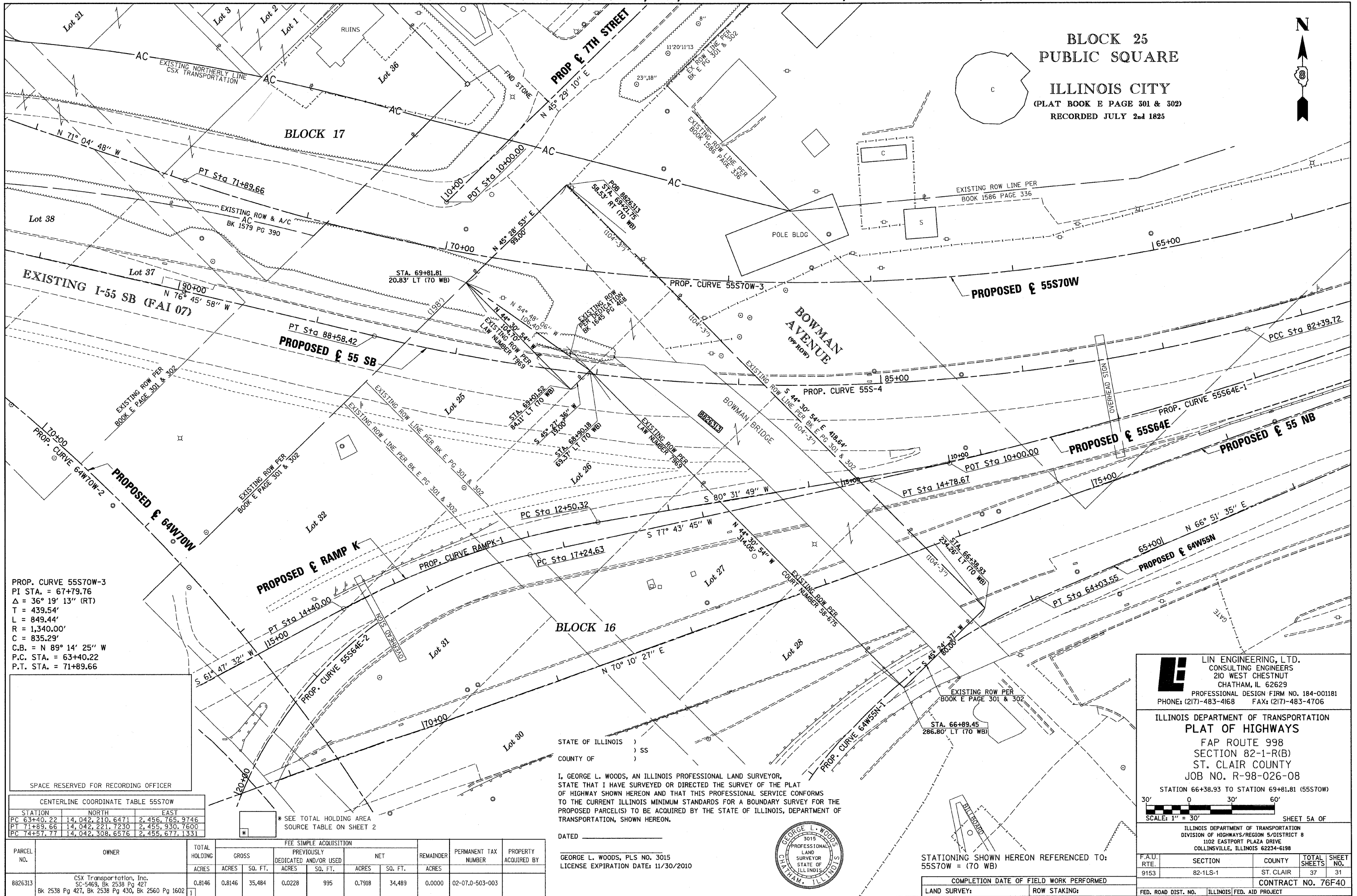


PART OF THE SW 1/4 OF SECTION 7, T2N, R9W OF THE 3RD PM, ST. CLAIR COUNTY, ILLINOIS

BLOCK 25
PUBLIC SQUARE

ILLINOIS CITY
(PLAT BOOK E PAGE 301 & 302)
RECORDED JULY 2nd 1825



PROP. CURVE 55S70W-3
PI STA. = 67+79.76
Δ = 36° 19' 13" (RT)
T = 439.54'
L = 849.44'
R = 1,340.00'
C = 835.29'
C.B. = N 89° 14' 25" W
P.C. STA. = 63+40.22
P.T. STA. = 71+89.66

SPACE RESERVED FOR RECORDING OFFICER

CENTERLINE COORDINATE TABLE 55S70W			
STATION	NORTH	EAST	
PC 63+40.22	14, 042, 210.6471	2, 456, 765.9746	
PT 71+89.66	14, 042, 221.7230	2, 455, 930.7600	
PC 74+57.77	14, 042, 308.6576	2, 455, 677.1331	

* SEE TOTAL HOLDING AREA SOURCE TABLE ON SHEET 2

STATE OF ILLINOIS)
COUNTY OF) SS

I, GEORGE L. WOODS, AN ILLINOIS PROFESSIONAL LAND SURVEYOR, STATE THAT I HAVE SURVEYED OR DIRECTED THE SURVEY OF THE PLAT OF HIGHWAY SHOWN HEREON AND THAT THIS PROFESSIONAL SERVICE CONFORMS TO THE CURRENT ILLINOIS MINIMUM STANDARDS FOR A BOUNDARY SURVEY FOR THE PROPOSED PARCEL(S) TO BE ACQUIRED BY THE STATE OF ILLINOIS, DEPARTMENT OF TRANSPORTATION, SHOWN HEREON.

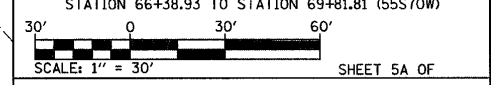


DATED _____
GEORGE L. WOODS, PLS NO. 3015
LICENSE EXPIRATION DATE: 11/30/2010

PARCEL NO.	OWNER	TOTAL HOLDING ACRES	FEE SIMPLE ACQUISITION				REMAINDER ACRES	PERMANENT TAX NUMBER	PROPERTY ACQUIRED BY		
			GROSS ACRES	SO. FT.	PREVIOUSLY DEDICATED ACRES	AND/OR USED SO. FT.				NET ACRES	SO. FT.
8826313	CSX Transportation, Inc. SC-5469, Bk 2538 Pg 427 Bk 2538 Pg 427, Bk 2538 Pg 430, Bk 2560 Pg 1602	0.8146	0.8146	35,484	0.0228	995	0.7918	34,489	0.0000	02-07.0-503-003	

LE LIN ENGINEERING, LTD.
CONSULTING ENGINEERS
210 WEST CHESTNUT
CHATHAM, IL 62629
PROFESSIONAL DESIGN FIRM NO. 184-001181
PHONE: (217)-483-4168 FAX: (217)-483-4706

ILLINOIS DEPARTMENT OF TRANSPORTATION
PLAT OF HIGHWAYS
FAP ROUTE 998
SECTION 82-1-R(B)
ST. CLAIR COUNTY
JOB NO. R-98-026-08
STATION 66+38.93 TO STATION 69+81.81 (55S70W)



SHEET 5A OF

F.A.U. RTE.	SECTION	COUNTY	TOTAL SHEETS	SHEET NO.
9153	82-1LS-1	ST. CLAIR	37	31

CONTRACT NO. 76F40

STATIONING SHOWN HEREON REFERENCED TO:
55S70W = (70 WB)

COMPLETION DATE OF FIELD WORK PERFORMED	
LAND SURVEY:	ROW STAKING:

PLOT DATE = 7/28/2009
FILE NAME = 8FILES
PLOT SCALE = 1"=30'
USER NAME = ROBERT