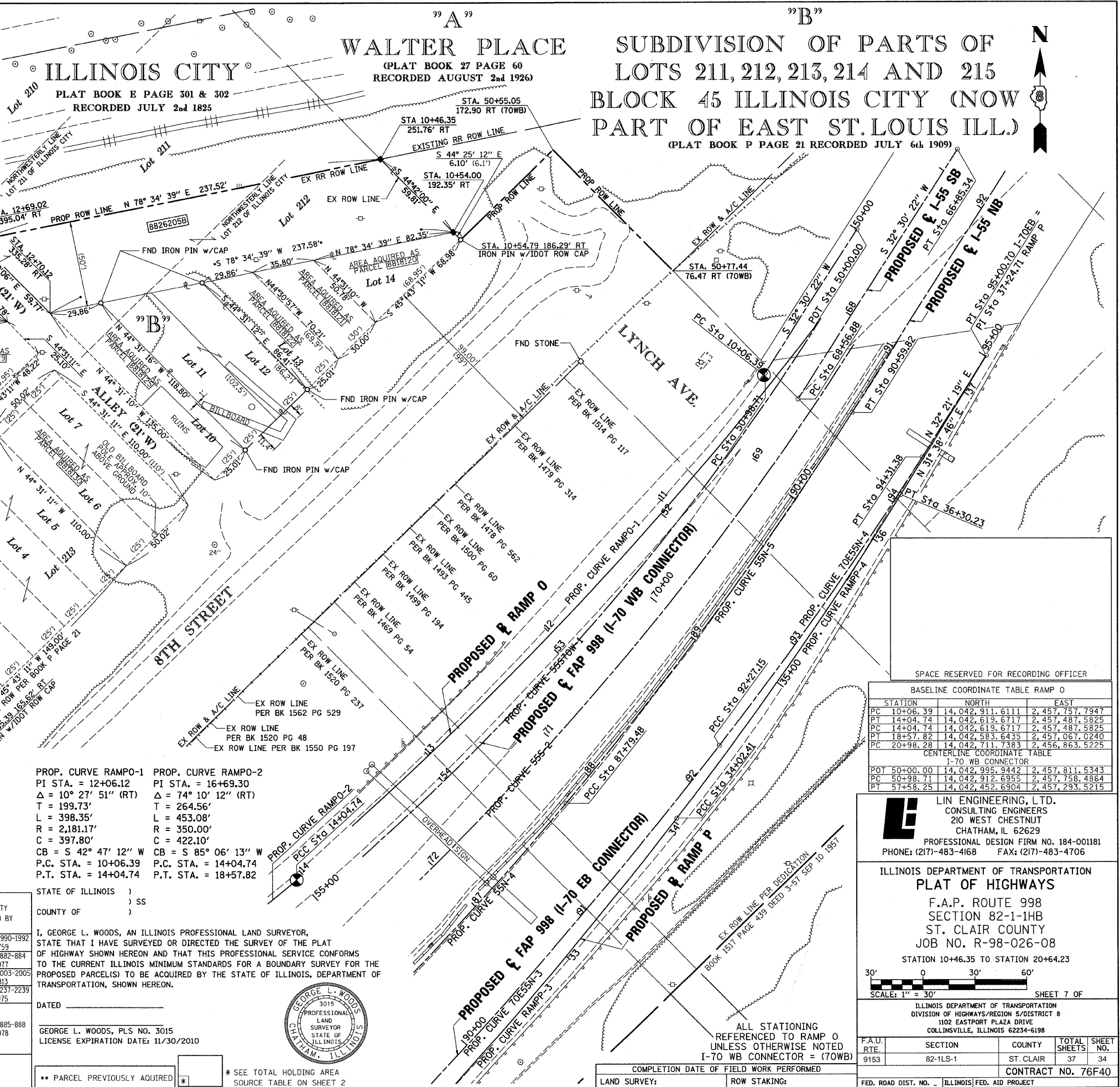


PART OF THE S 1/2 OF SECTION 7, T2N, R9W OF THE 3RD PM, ST. CLAIR COUNTY, ILLINOIS

06-00-99

PARCEL NO.	OWNER	TOTAL HOLDING	FEE SIMPLE	ACQUISITION	REMAINDER	PERMANENT TAX NUMBER	PROPERTY ACQUIRED BY
		ACRES	ACRES	SQ. FT.	ACRES		
8818120**	ST. CLAIR COUNTY AS TRUSTEE TITLE REPORT NO. SC-3447.0	0.0450	0.0450	1,962	0.00	02-07-0-316-002	BK 4049 PG 1613-1615 A01850605
8818121**	ST. CLAIR COUNTY AS TRUSTEE TITLE REPORT NO. SC-3446.0	0.0417	0.0417	1,815	0.00	02-07-0-316-003	BK 4047 PG 1991-1993 A01849809
8818122**	ST. CLAIR COUNTY AS TRUSTEE TITLE REPORT NO. SC-3445	0.0450	0.0450	1,959	0.00	02-07-0-316-004	BK 4047 PG 2000-2002 A01849812
8818125**	BI-STATE TRUCK REPAIR INC. TITLE REPORT NO. SC-3442.0	0.0729	0.0729	3,174	0.00	02-07-0-316-007	BK 3997 PG 1501-1503 A01827858
8818126**	BI-STATE TRUCK REPAIR, INC. TITLE REPORT NO. SC-3434.0, SC-3435.0, SC-3436.0, SC-3437.0, SC-3791.0, SC-3796.0	0.2688	0.2688	11,711	0.00	02-07-0-316-012 02-07-0-316-013 02-07-0-316-014 02-07-0-316-015 02-07-0-316-016 02-07-0-316-017 02-07-0-316-018	BK 4025 PG 1683-1686 A01839816



STATION/OFFSETS REFERENCED TO BASELINE RAMP 0

STATION	OFFSET	NORTH	EAST
10+46.35	251.76' RT	14,043,037.2354	2,457,536.4072
10+54.00	192.35' RT	14,042,994.7247	2,457,578.4752
20+64.23	289.04' RT	14,042,938.2134	2,457,046.3118

STATION/OFFSETS REFERENCED TO CENTERLINE I-70 WB CONNECTOR

STATION	OFFSET	NORTH	EAST
50+55.05	172.90' RT	14,043,042.4374	2,457,636.1389
50+77.44	76.47' RT	14,042,971.7287	2,457,705.4302

PROP. CURVE 55S20W-1  
PI STA. = 54+34.08  
Δ = 25° 36' 07" (RT)  
T = 335.37'  
L = 659.54'  
R = 1,476.00'  
C = 654.06'  
CB = S 45° 18' 26" W  
P.C. STA. = 50+98.71  
P.T. STA. = 57+58.25

PROP. CURVE RAMPO-1  
PI STA. = 12+06.12  
Δ = 10° 27' 51" (RT)  
T = 199.73'  
L = 398.35'  
R = 2,181.17'  
C = 397.80'  
CB = S 42° 47' 12" W  
P.C. STA. = 10+06.39  
P.T. STA. = 14+04.74

PROP. CURVE RAMPO-2  
PI STA. = 16+69.30  
Δ = 74° 10' 12" (RT)  
T = 264.56'  
L = 453.08'  
R = 350.00'  
C = 422.10'  
CB = S 85° 06' 13" W  
P.C. STA. = 14+04.74  
P.T. STA. = 18+57.82

PARCEL NO.	OWNER	TOTAL HOLDING	FEE SIMPLE	ACQUISITION	REMAINDER	PERMANENT TAX NUMBER	PROPERTY ACQUIRED BY
		ACRES	ACRES	SQ. FT.	ACRES		
8818127**	BI-STATE TRUCK REPAIR INC. TITLE REPORT NO. SC-3438.0	0.0432	0.0432	1,881	0.00	02-07-0-316-011	BK 4027 PG 1990-1992 A01840759
8818128**	LARRY SINN TITLE REPORT NO. SC-3439.0	0.0355	0.0355	1,548	0.00	02-07-0-316-010	BK 4014 PG 882-884 A01834977
8818129**	ST. CLAIR COUNTY AS TRUSTEE TITLE REPORT NO. SC-3441.0 SC-3440.1	0.0451	0.0451	1,963	0.00	02-07-0-316-008 02-07-0-316-009	BK 4047 PG 2003-2005 A01849813
8818130**	WILLIAM KARIUS TITLE REPORT NO. SC-3798.0, 3799.0	0.1263	0.1263	5,502	0.00	02-07-0-316-019 02-07-0-316-020	BK 4182 PG 2231-2239 A01910975
8818131**	BI-STATE TRUCK REPAIR, INC. TITLE REPORT NO. SC-3797.0, SC-3800.0, SC-3801.0, SC-3802.0, SC-3803.0, SC-3804.0	0.3763	0.3763	16,390	0.00	02-07-0-316-021 02-07-0-316-022 02-07-0-316-023 02-07-0-316-024 02-07-0-316-025 02-07-0-316-026	BK 4014 PG 885-888 A01834978
8826205	CENTRAL ILLINOIS PUBLIC SERVICE COMPANY d/b/a AMERENCIPI, AN ILLINOIS CORPORATION TITLE REPORT NO. SC-5450.0 BK 4172 PG 1491-1492; BK 4172 PG 1579	0.5453	A 0.2726 B 0.2727	A 11,875 B 11,877	0.00	02-07-0-316-005 02-07-0-316-006	

STATE OF ILLINOIS )  
                                  ) SS  
COUNTY OF              )  
  
I, GEORGE L. WOODS, AN ILLINOIS PROFESSIONAL LAND SURVEYOR,  
STATE THAT I HAVE SURVEYED OR DIRECTED THE SURVEY OF THE PLAT  
OF HIGHWAY SHOWN HEREON AND THAT THIS PROFESSIONAL SERVICE CONFORMS  
TO THE CURRENT ILLINOIS MINIMUM STANDARDS FOR A BOUNDARY SURVEY FOR THE  
PROPOSED PARCEL(S) TO BE ACQUIRED BY THE STATE OF ILLINOIS, DEPARTMENT OF  
TRANSPORTATION, SHOWN HEREON.  
  
DATED \_\_\_\_\_  
  
GEORGE L. WOODS, PLS NO. 3015  
LICENSE EXPIRATION DATE: 11/30/2010



SPACE RESERVED FOR RECORDING OFFICER

BASELINE COORDINATE TABLE RAMP 0

STATION	NORTH	EAST
PC 10+06.39	14,042,911.6111	2,457,757.7947
PT 14+04.74	14,042,619.6717	2,457,487.5825
PC 14+04.74	14,042,619.6717	2,457,487.5825
PT 18+57.82	14,042,583.6435	2,457,067.0240
PC 20+98.28	14,042,711.7383	2,456,863.5225

CENTERLINE COORDINATE TABLE  
I-70 WB CONNECTOR

POT	NORTH	EAST
POT 50+00.00	14,042,995.9442	2,457,811.5343
PC 50+98.71	14,042,912.6955	2,457,758.4864
PT 57+58.25	14,042,452.6904	2,457,293.5215

**LE** LIN ENGINEERING, LTD.  
CONSULTING ENGINEERS  
210 WEST CHESTNUT  
CHATHAM, IL 62629  
PROFESSIONAL DESIGN FIRM NO. 184-001181  
PHONE: (217)-483-4168 FAX: (217)-483-4706

ILLINOIS DEPARTMENT OF TRANSPORTATION  
**PLAT OF HIGHWAYS**  
F.A.P. ROUTE 998  
SECTION 82-1-IHB  
ST. CLAIR COUNTY  
JOB NO. R-98-026-08  
STATION 10+46.35 TO STATION 20+64.23

SCALE: 1" = 30'

SHEET 7 OF

F.A.U. RTE.	SECTION	COUNTY	TOTAL SHEETS	SHEET NO.
9153	82-1LS-1	ST. CLAIR	37	34

ILLINOIS DEPARTMENT OF TRANSPORTATION  
DIVISION OF HIGHWAYS/REGION 5/DISTRICT 8  
1102 EASTPORT PLAZA DRIVE  
COLLINGSVILLE, ILLINOIS 62234-6198

COMPLETION DATE OF FIELD WORK PERFORMED

CONTRACT NO. 76F40

FED. ROAD DIST. NO. - [ILLINOIS] FED. AID PROJECT