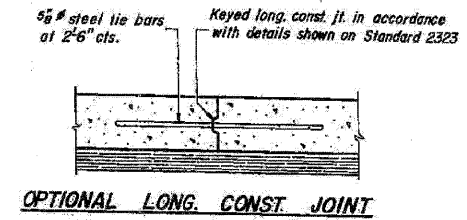
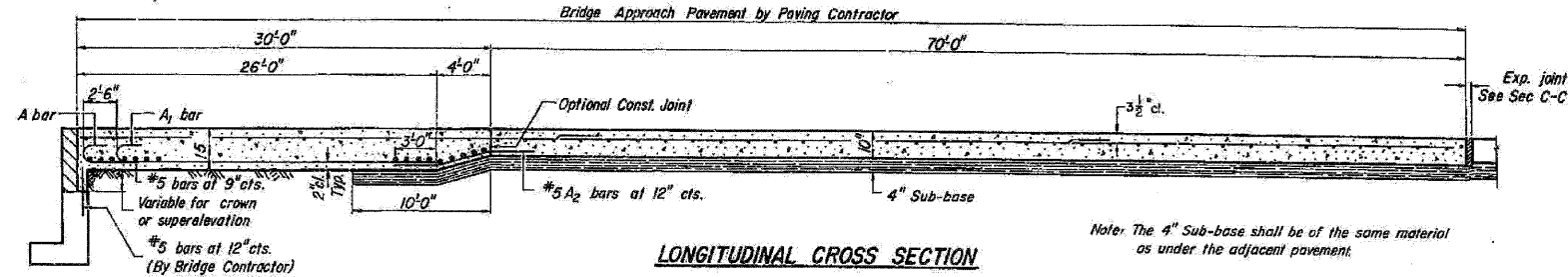
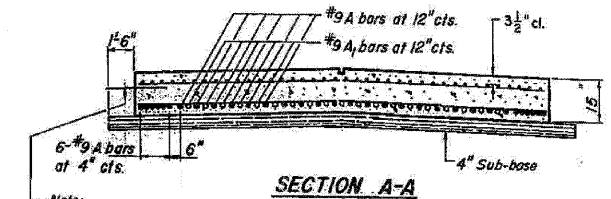
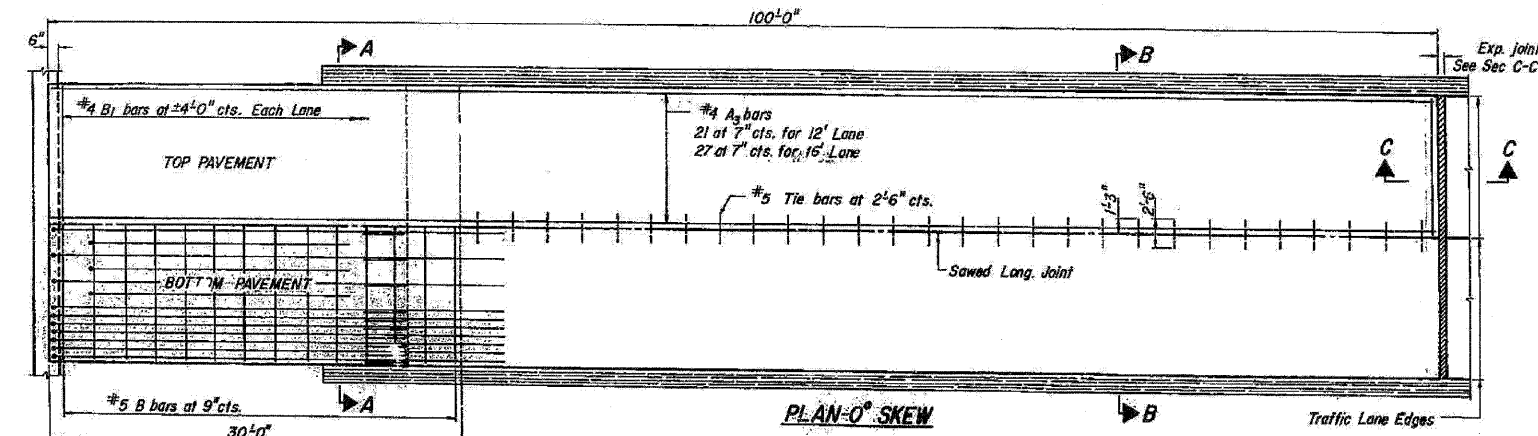


STATE OF ILLINOIS
DEPARTMENT OF TRANSPORTATION

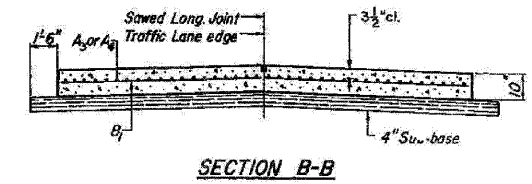
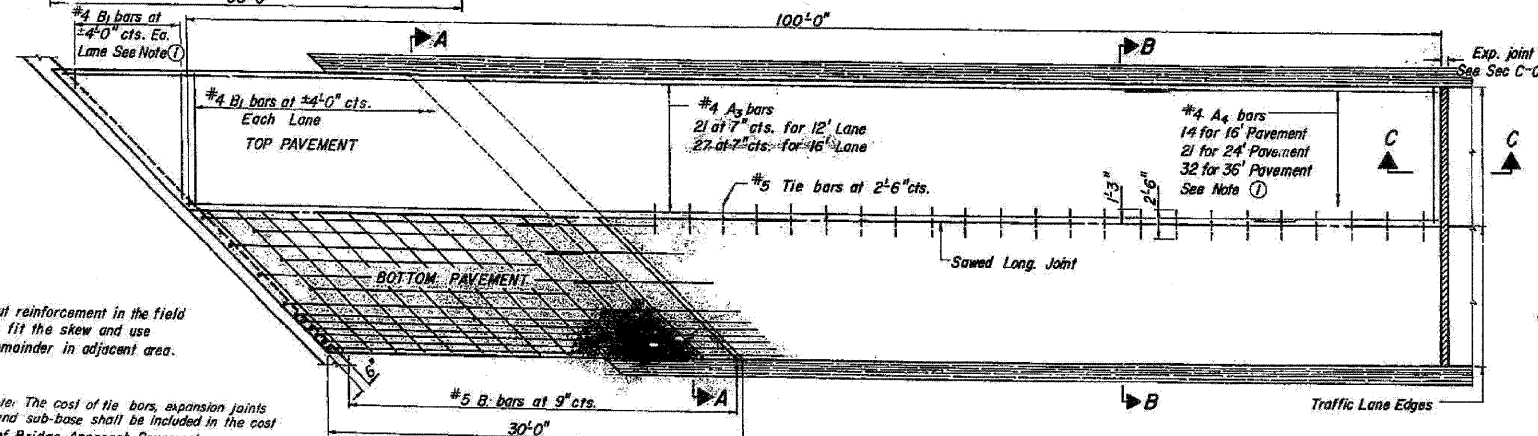
Note: Tilt hook of #9 bars for min. 3 1/2" cl. Use 1'-4" Min. Lap for #4 bars.
Use 1'-8" Min. Lap for #5 bars.



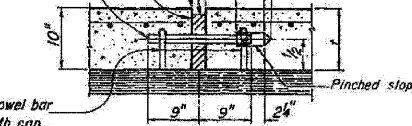
As approved by the Engineer, the contractor may elect to reduce the widths by use of the Optional Longitudinal Construction Joint shown. Joint shall be located at the edge of Traffic Lane.



Note: When the road plans show curb and gutter, gutter or bridge approach shoulder pavement adjacent to approach slabs, place 1/2" steel tie bars at 2'-5" centers in accordance with the details for Bulkhead Longitudinal Construction Joint shown on Standard 2323. Cost of the tie bars will be included in the contract unit price for the adjacent item. Transitions for curb and gutter shall be as shown on the plans.

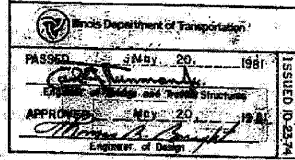
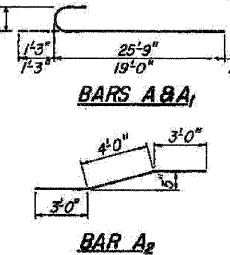
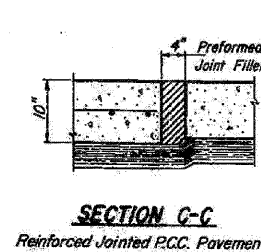
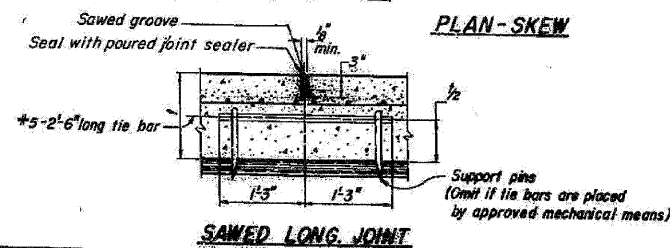


Finish corners with edger
2" Preformed expansion joint filler
1 1/2" dia. x 18" long pre-coated smooth dowel bars at 12" cts.



① Cut reinforcement in the field to fit the skew and use remainder in adjacent area.

Note: The cost of tie bars, expansion joints and sub-base shall be included in the cost of Bridge Approach Pavement.



FOR INFORMATION ONLY

benesch

alfred benesch & company
Engineers • Surveyors • Planners
205 North Michigan Avenue, Suite 2400
Chicago, Illinois 60601
312-585-0450 Job No. 10050

BRIDGE APPROACH PAVEMENT

(Sheet 1 of 2.)
STANDARD 2353-5

EXISTING PLAN INFORMATION 2 OF 10
STRUCTURE NO. 022-0005

SHEET NO. 19 25 SHEETS	F.A.I. RTE.	SECTION	COUNTY	TOTAL SHEETS	SHEET NO.
	290	2009-099 BR	COOK/DUPAGE	309	263
FED. ROAD DIST. NO.			ILLINOIS FED. AID PROJECT		
			CONTRACT NO. 60157		

18:44:07 11/12/2009 x:\100005\10050\engineering\documents\contract\1\SN_022-0005-0005-Yor-k_Rd\0005-60051-019-Existplan_02.dgn