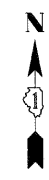
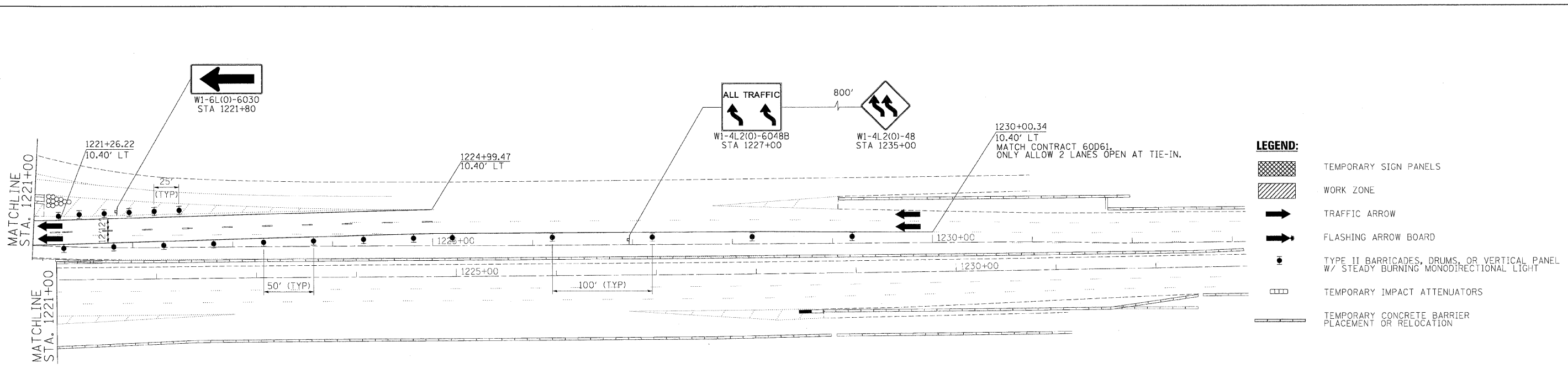


MATCHLINE
STA. 6+70



FOR INFORMATION ONLY

MATCHLINE
STA. 12+50



- LEGEND:**
- TEMPORARY SIGN PANELS
 - WORK ZONE
 - TRAFFIC ARROW
 - FLASHING ARROW BOARD
 - TYPE II BARRICADES, DRUMS, OR VERTICAL PANEL W/ STEADY BURNING MONODIRECTIONAL LIGHT
 - TEMPORARY IMPACT ATTENUATORS
 - TEMPORARY CONCRETE BARRIER PLACEMENT OR RELOCATION

FILE NAME -	DESIGNED - JJT	REVISED -
...\\p1p1n_abc_c3_290_mot.st_1.25.dgn	DRAWN - TMB	REVISED -
USER NAME - jrajewski	CHECKED - AJP	REVISED -
PLOT DATE - 1/25/2010	DATE - 1/25/10	REVISED -

benesch

**STATE OF ILLINOIS
DEPARTMENT OF TRANSPORTATION**

**MAINTENANCE OF TRAFFIC
PLAN - STAGE 1**

SCALE: 1"=50' SHEET NO. 16 OF 40 SHEETS STA. TO STA.

F.A.I. RTE.	SECTION	COUNTY	TOTAL SHEETS	SHEET NO.
290	(2525, ETC., 2727RS-8	COOK	201	64
FED. ROAD DIST. NO. [ILLINOIS] FED. AID PROJECT			CONTRACT NO. 60K11	