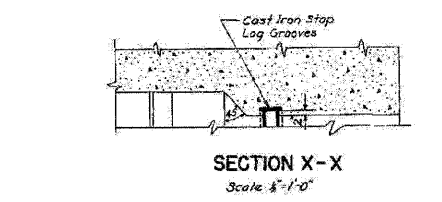
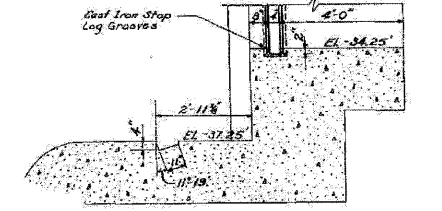


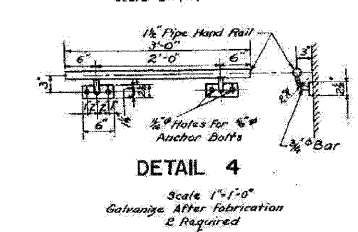
ROUTE NO.	SECTION	COUNTY	SHEET
F.A.I. 24	S-2626 B-30	COOK	41
FILED BY NO. 4	REVISED	PROJECT	1-24-3(58)-25



SECTION X-X  
Scale 1/2"=1'-0"



DETAILS 2&3  
Scale 3/8"=1'-0"



DETAIL 4  
Scale 1/4"=1'-0"

NOTE: General Note on Sheet M-1 Applies To This Sheet.

PS  
26

FOR INFORMATION ONLY

REVISIONS	
DATE	DESCRIPTION

CITY OF CHICAGO  
DEPARTMENT OF PUBLIC WORKS  
BUREAU OF ENGINEERING  
SOUTH ROUTE SUPERHIGHWAY  
SECTION S-2626 B-30  
ROOSEVELT ROAD PUMPING STATION  
LONGITUDINAL SECTION  
SCALE: AS SHOWN  
DATE: FEBRUARY, 1960  
CONTRACT SHEET NO. M-3

DESIGNED BY: L. H. Ermoian.  
DRAWN BY: Vic Carlson.  
TRACED BY: W. Kozner.  
CHECKED BY: S. J. Allen.  
APPROVED BY: [Signature]

SECTION 2-2

FILE NAME =	DESIGNED - SGL	REVISED -
#FILE#	DRAWN - SGL	REVISED -
USER NAME = #USER#	CHECKED - FML	REVISED -
PLOT DATE = #DATE#	DATE - 1/25/10	REVISED -

**E** LIN ENGINEERING, LTD.  
Consulting Engineers  
Chatham, Illinois Westport, Illinois

STATE OF ILLINOIS  
DEPARTMENT OF TRANSPORTATION

PUMP STATION NO. 26  
RECORD DRAWINGS

SCALE: SHEET NO. 3 OF 4 SHEETS STA. TO STA.

F.A.I. RTE.	SECTION	COUNTY	TOTAL SHEETS	SHEET NO.
290	(2525, ETC., 2727) RS-8	COOK	201	157
CONTRACT NO. 60K11			ILLINOIS FED. AID PROJECT	