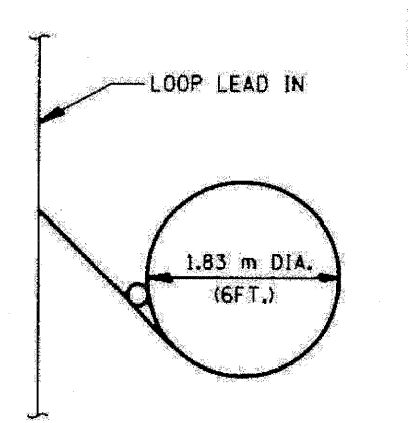
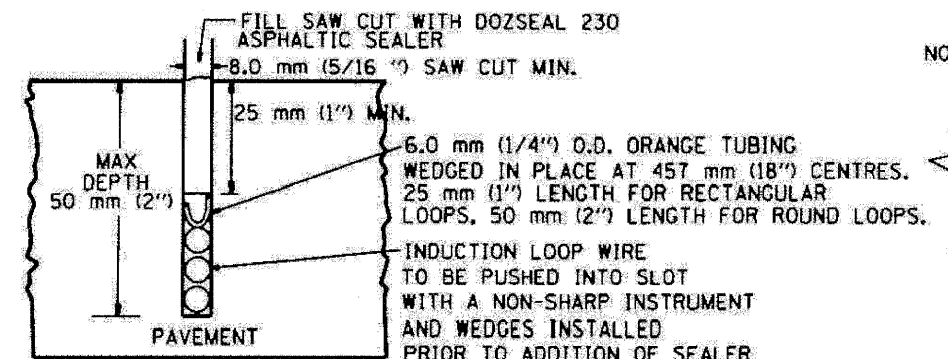
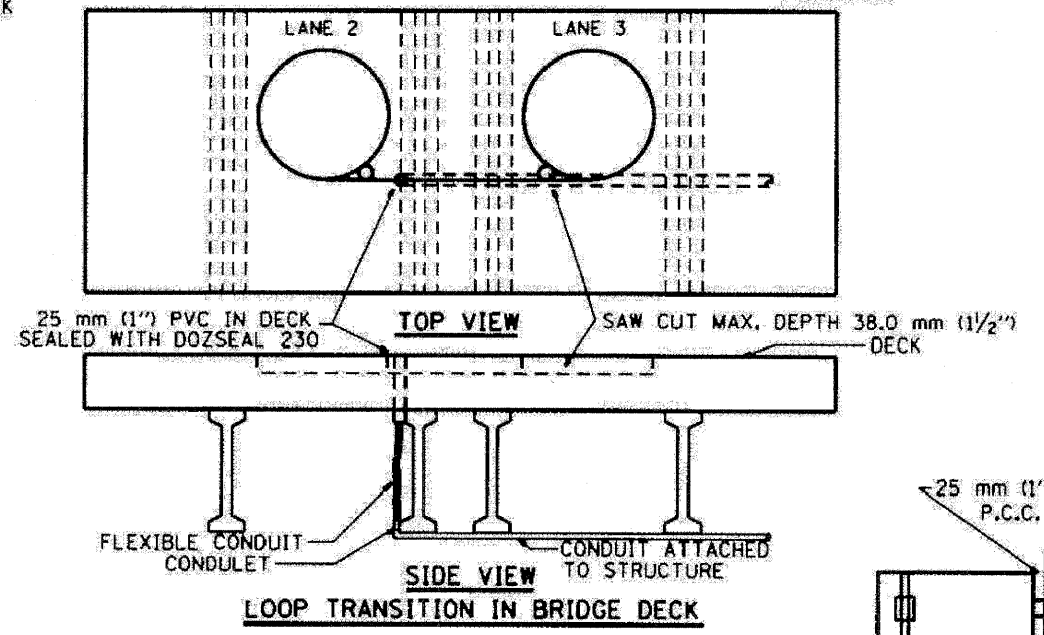
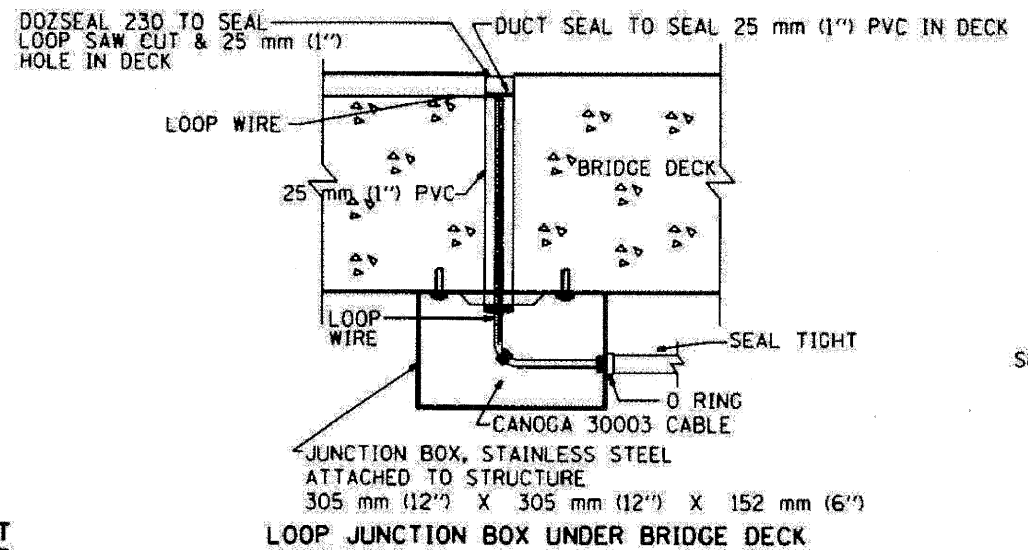


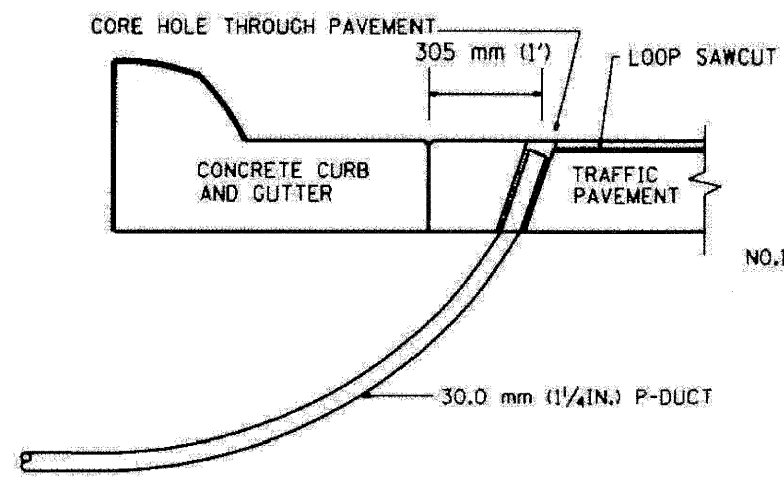
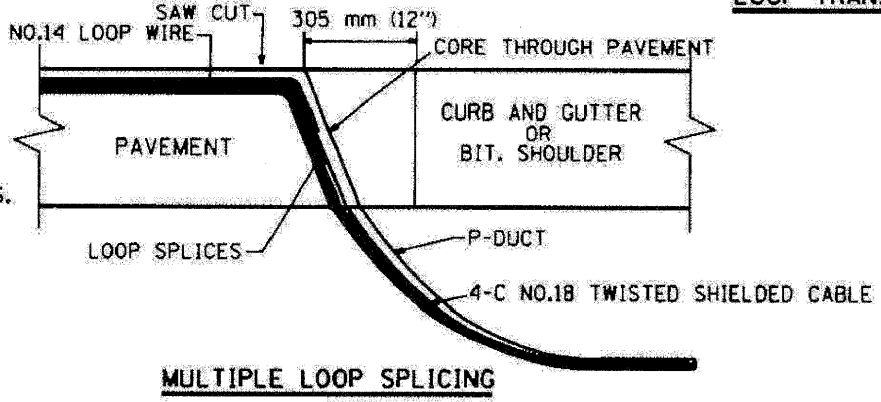
F.A. RTE.	SECTION	COUNTY	TOTAL SHEETS	SHEET NO.
STA.	TO STA.			
FED. ROAD DIST. NO.		ILLINOIS FED. AID PROJECT		



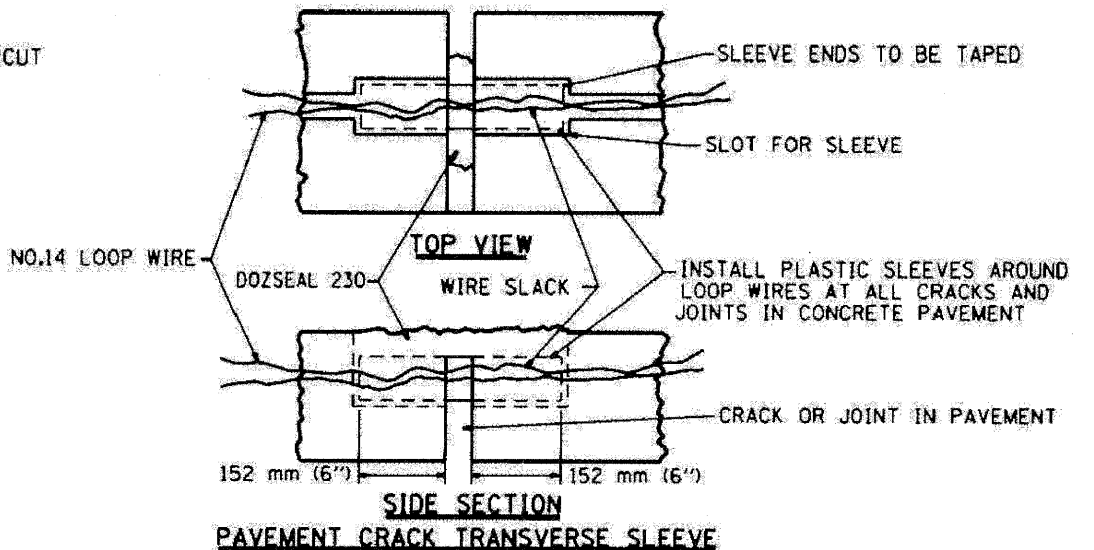
TYPICAL LOOP SAWCUT LAYOUT



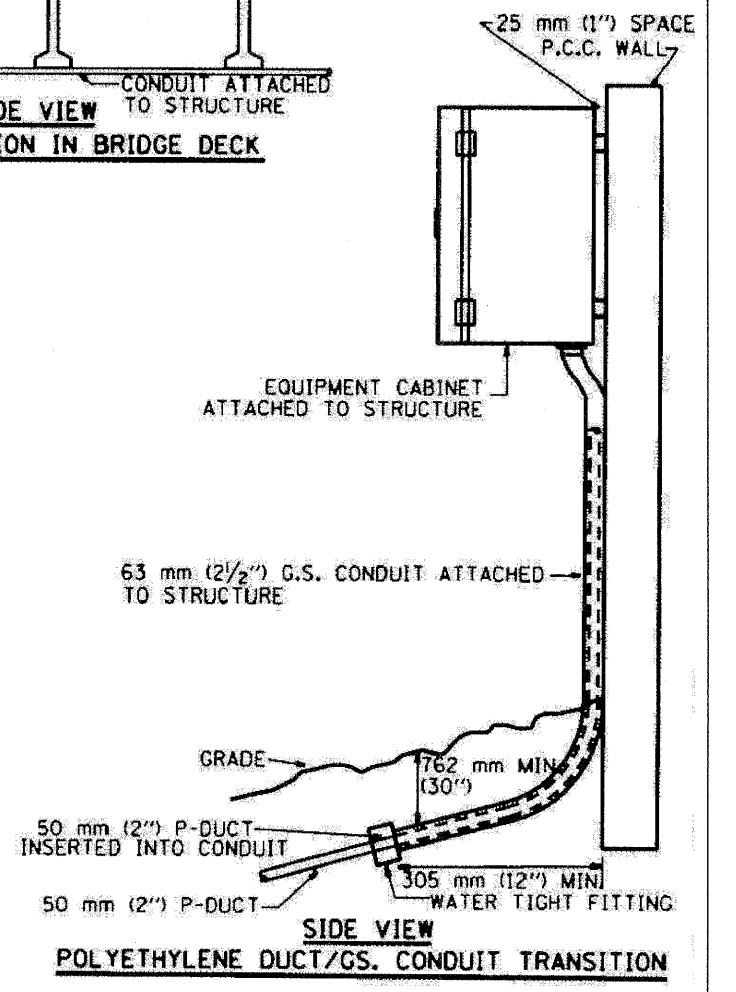
LOOP CROSS SECTION IN PAVEMENT



SIDE SECTION LOOP LEAD-IN TRANSITION DETAIL



SIDE SECTION PAVEMENT CRACK TRANSVERSE SLEEVE



REVISION	DATE
R.L.	5/98
R.L.	5/98
T.C.	11/95
R.L.	08/96
T.C.	10/96

ILLINOIS DEPARTMENT OF TRANSPORTATION  
TRAFFIC SYSTEMS CENTER

**LOOP, CONDUIT & DUCT INSTALLATION DETAILS**

SCALE: VERT. NONE  
DATE: 6-22-94

DRAWN BY: G.A.  
CHECKED BY: R.L.

**TRAFFIC SYSTEMS CENTER (TY-1TSC-418\*4)**

FILE NAME =	DESIGNED - GHT	REVISED -
...pprhn_ABC_C3_TS_DET.12.dgn	DRAWN - DMS	REVISED -
USER NAME = jnajewski	CHECKED - MPM	REVISED -
PLOT DATE = 1/25/2010	DATE - 1/25/10	REVISED -

**benesch**

STATE OF ILLINOIS  
DEPARTMENT OF TRANSPORTATION

TRAFFIC SYSTEM CENTER  
DETAIL SHEETS

SCALE: N.T.S. SHEET NO. 12 OF 15 SHEETS STA. TO STA.

F.A. RTE.	SECTION	COUNTY	TOTAL SHEETS	SHEET NO.
290	(2727, ETC., 3131RS-7	COOK	216	193
FED. ROAD DIST. NO.		ILLINOIS FED. AID PROJECT		
		CONTRACT NO. 60C53		