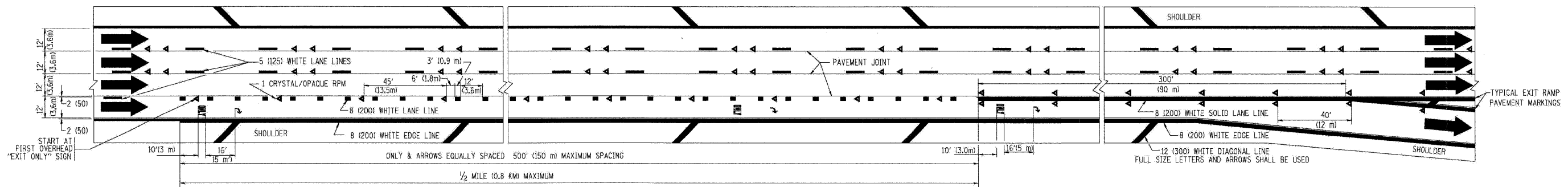
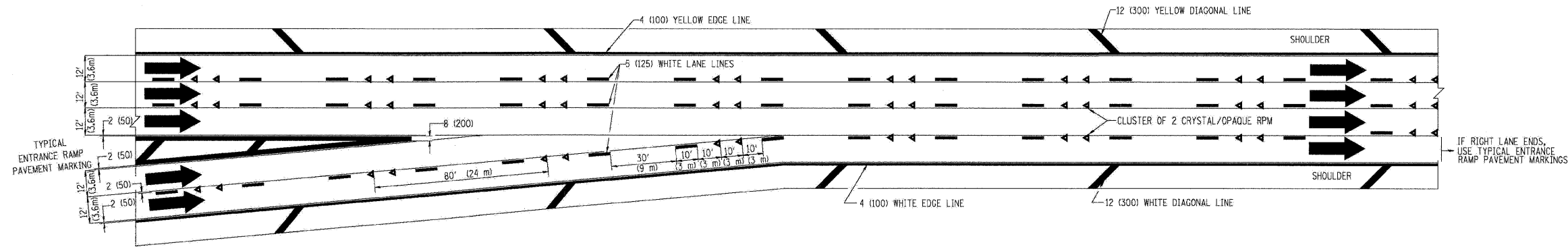


**TYPICAL ENTRANCE/EXIT RAMP COMBINATION PAVEMENT MARKINGS**



**TYPICAL EXIT ONLY LANE PAVEMENT MARKINGS**



**TYPICAL TWO LANE ENTRANCE RAMP PAVEMENT MARKINGS**

FILE NAME =	DESIGNED - AJP	REVISED -	<b>benesch</b>	<b>STATE OF ILLINOIS DEPARTMENT OF TRANSPORTATION</b>	<b>MULTI-LANE FREEWAY PAVEMENT MARKING</b>			F.A.I. RTE.	SECTION	COUNTY	TOTAL SHEETS	SHEET NO.
USER NAME = jma_ewaki	DRAWN - TMB	REVISED -						290	(2727, ETC., 313)RS-7	COOK	216	212
PLOT DATE = 1/25/2010	CHECKED - JMM	REVISED -						CONTRACT NO. 60C53				
	DATE - 1/25/10	REVISED -						FED. ROAD DIST. NO. ILLINOIS FED. AID PROJECT				
					SCALE: N.T.S.	SHEET NO. 16 OF 20 SHEETS	STA.	TO STA.				