

ROUTE	SECTION	COUNTY	TOTAL SHEETS	SHEET NUMBER
VARIOUS	2010-065-T	COOK	14	1

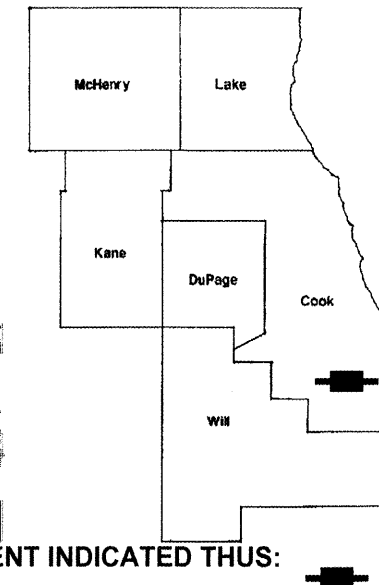
**STATE OF ILLINOIS**  
**DEPARTMENT OF TRANSPORTATION**  
**DIVISION OF HIGHWAYS**  
**DISTRICT ONE**  
**PROPOSED HIGHWAY PLANS**

**CONTRACT NO. 60L46**

D-91-700-10

FOR INDEX OF SHEETS, SEE SHEET NO. 2

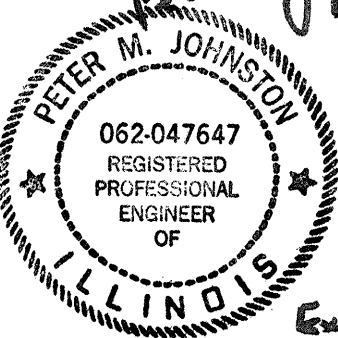
VARIOUS ROUTES  
 SECTION: 2010-065-T  
 AT ALSIP AND HARVEY TEAM SECTIONS  
 DRAINAGE IMPROVEMENTS  
 COOK COUNTY  
 C-91-700-10



LOCATION OF IMPROVEMENT INDICATED THUS: 

DISTRICT ONE - DESIGN - PLAN PREPARATION ENGINEER:  
 KEN ENG / (847) 705-4247

**CONTRACT NO. 60L46**

*Peter M. Johnston*  
*12-8-10*  
  
*Exp*  
*11-30-11*

**STATE OF ILLINOIS**  
**DEPARTMENT OF TRANSPORTATION**  
**DIVISION OF HIGHWAYS**  
 SUBMITTED: DECEMBER 15 20 10  
*Diane M. O'Keefe*  
 DEPUTY DIRECTOR OF HIGHWAYS, REGION ENGINEER  
January 28 20 11  
*Scott E. Stitt, P.E.*  
 acting ENGINEER OF DESIGN AND ENVIRONMENT  
January 28 20 11  
*Christine M. Reed*  
 DIRECTOR, DIVISION OF HIGHWAYS

**PRINTED BY THE AUTHORITY**  
**OF THE STATE OF ILLINOIS**

**J.U.L.I.E.: JOINT UTILITY LOCATION**  
**INFORMATION FOR EXCAVATION**  
 (312) 744-7000

INDEX OF SHEETS

SHEET NO.	DESCRIPTION
1	COVER SHEET
2	GENERAL NOTES
3	SUMMARY OF QUANTITIES
4-7	SCHEDULES
8-10	LOCATION MAP
11	PAVEMENT PATCHING FOR HMA SURFACED PAVEMENT (BD22)
12	CURB OR CURB AND GUTTER REMOVAL AND REPLACEMENT (BD24)
13	TRAFFIC CONTROL AND PROTECTION FOR SIDEROADS, INTERSECTION AND DRIVEWAYS (TC10)
14	DETECTOR LOOP INSTALLATION DETAIL FOR ROADWAY RESURFACING

HIGHWAY STANDARDS

STD. NO.	TITLE
424001 - 05	CURB RAMPS FOR SIDEWALKS
442201 - 03	CLASS C AND D PATCHES
602001 - 02	CATCH BASIN, TYPE A
602011 - 02	CATCH BASIN, TYPE C
602016 - 02	CATCH BASIN, TYPE D
602301 - 03	INLET, TYPE A
602401 - 03	MANHOLE, TYPE A
602601 - 02	PRECAST REINFORCED CONCRETE FLAT SLAB TOP
602701 - 02	MANHOLE STEPS
604001 - 03	FRAMES AND LIDS, TYPE 1
604006 - 04	FRAME AND GRATE, TYPE 3
606001 - 04	CONCRETE CURB AND COMBINATION CONCRETE CURB AND GUTTER
701501 - 06	URBAN LANE CLOSURE, 2L, 2W - UNDIVIDED
701601 - 07	URBAN LANE CLOSURE, MULTILANE, 1W OR 2W WITH NON TRAVERSABLE MEDIAN
701602 - 05	URBAN LANE CLOSURE, MULTILANE, 2W WITH BIDIRECTIONAL LEFT TURN LANE
701606 - 07	URBAN LANE CLOSURE, MULTILANE, 2W WITH MOUNTABLE MEDIAN
701701 - 07	URBAN LANE CLOSURE, MULTILANE INTERSECTION
701801 - 04	LANE CLOSURE MULTILANE 1W OR 2W CROSSWALK OR SIDEWALK CLOSURE
701901 - 01	TRAFFIC CONTROL DEVICES

GENERAL NOTES

- BEFORE STARTING ANY EXCAVATION, THE CONTRACTOR SHALL CALL "J.U.L.I.E." AT 800-892-0123 FOR FIELD LOCATIONS OF BURIED ELECTRIC, TELEPHONE AND GAS FACILITIES. (48 HOUR NOTIFICATION IS REQUIRED).
- THE CONTRACTOR SHALL COORDINATE CONSTRUCTION ACTIVITIES WITH UTILITY COMPANIES.
- THE CONTRACTOR WILL NOT BE ALLOWED TO SET UP A YARD OR FIELD OFFICE ON STATE PROPERTY WITHOUT WRITTEN PERMISSION FROM THE DEPARTMENT.
- WHEN ARTIFICIAL LIGHTING IS USED IN NIGHT OPERATIONS THE CONTRACTOR SHALL EXERCISE THE UTMOST PRECAUTIONS IN PREVENTING ADVERSE VISIBILITY TO THE MOTORING PUBLIC AND ADJOINING RESIDENTIAL AREAS.
- ALL HMA PAVEMENT PATCHING SHALL BE CLASS D
- DRAINAGE ADJUSTMENT, CLEANING OR RECONSTRUCTION LOCATIONS WILL BE DETERMINED IN THE FIELD BY THE ENGINEER.
- EXISTING BROKEN FRAMES AND LIDS SHALL BE REMOVED AND DISPOSED OF BY THE CONTRACTOR AND SHALL BE REPLACED AS DIRECTED BY THE ENGINEER. REPLACEMENT FRAMES AND LIDS WILL BE PAID FOR IN ACCORDANCE WITH ARTICLE 109.04 OF THE STANDARD SPECIFICATIONS UNLESS A SEPARATE PAY ITEM HAS BEEN PROVIDED.
- THE RESIDENT ENGINEER SHALL CONTACT THE TRAFFIC CONTROL SUPERVISOR AT (847) 705-4470 A MINIMUM OF 72 HOURS PRIOR TO THE PLACEMENT OF ANY TEMPORARY TRAFFIC CONTROL DEVICES.

**HOT-MIX ASPHALT MIXTURE REQUIREMENTS**

MIXTURE TYPE	AIR VOIDS
<b>PAVEMENT PATCHING (FULL DEPTH)</b>	
CLASS D PATCHES (HMA SURFACE COURSE, MIX "D", N70), THICKNESS VARIES	4% @ 70-GYR
CLASS D PATCHES (HMA BINDER, IL 19.0), THICKNESS VARIES	4% @ 70 GYR

THE UNIT WEIGHT USED TO CALCULATE ALL HOT-MIX ASPHALT SURFACE MIXTURE A IS 112 LBS/SQ YD/IN.

THE "AC TYPE" FOR POLYMERIZED HMA MIXES SHALL BE "SBS/SBR PG 70-22" AND FOR NON-POLYMERIZED HMA THE "AC TYPE" SHALL BE "PG 64-22" UNLESS MODIFIED BY DISTRICT ONE SPECIAL PROVISIONS.

FOR "PERCENT OF RAP" SEE DISTRICT ONE SPECIAL PROVISIONS.

FILE NAME *	USER NAME * .USER.	DESIGNED -	REVISED -	<b>STATE OF ILLINOIS DEPARTMENT OF TRANSPORTATION</b>	<b>DRAINAGE REPAIRS INDEX OF SHEETS, HIGHWAY STANDARDS AND GENERAL NOTES</b>	F.A.P. RTE.	SECTION	COUNTY	TOTAL SHEETS	SHEET NO.	
#FILE#		DRAWN - JJ	REVISED -			•	2010-065-T	COOK	14	2	
	PLOT SCALE = 40.0000' / IN.	CHECKED - RS	REVISED -			• VARIOUS					CONTRACT NO. 60L46
	PLOT DATE = 12/14/2010	DATE - 12-10-2010	REVISED -			SCALE: 20	SHEET NO. OF SHEETS	STA.	TO STA.	ILLINOIS FED. AID PROJECT	

SUMMARY OF QUANTITIES

100% STATE  
URBAN  
0044

ITEM NUMBER	DESCRIPTION	UNIT	QUANTITY	0004 DRAINAGE
20800150	TRENCH BACKFILL	CU YD	109	109
28100105	STONE RIP RAP, CLASS A3	SQ YD	35	35
28200200	FILTER FABRIC	SQ YD	10	10
42300500	DRIVEWAY PAVEMENT, 9 INCH <b>PORTLAND CEMENT CONCRETE</b>	SQ YD	15	15
42400200	SIDEWALK 5 INCH <b>PORTLAND CEMENT CONCRETE</b>	SQ FT	201	201
44000200	DRIVEWAY PAVEMENT REMOVAL	SQ YD	15	15
44000600	SIDEWALK REMOVAL	SQ FT	201	201
54213657	PRE CAST REINFORCED CONCRETE FLARED END SECTIONS 12"	EACH	1	1
55000050	STORM SEWERS, CLASS A, 12" TYPE 1	FOOT	10	10
X6022705	CATCH BASINS, TYPE A, 4'-DIAMETER, WITH SALVAGED FRAME AND GRATE	EACH	4	4
60206905	CATCH BASINS, TYPE C, TYPE 1 FRAME, OPEN LID	EACH	1	1
X6022210	MANHOLES, TYPE A, 4'-DIAMETER, WITH SALVAGED FRAME AND GRATE	EACH	1	1
X6023500	INLETS, TYPE A, WITH SALVAGED FRAME AND GRATE	EACH	3	3
60404300	FRAMES AND GRATES, TYPE 3	EACH	3	3
60406000	FRAMES AND LIDS, TYPE 1, OPEN LID	EACH	30	30
60500040	REMOVING MANHOLES	EACH	1	1
60500050	REMOVING CATCH BASINS	EACH	4	4
60500060	REMOVING INLETS	EACH	5	5
67000400	ENGINEER'S FIELD OFFICE, TYPE A	CAL MO	6	6
67100100	MOBILIZATION	L SUM	1	1
70102620	TRAFFIC CONTROL AND PROTECTION, STANDARD 701501	L SUM	1	1
70102625	TRAFFIC CONTROL AND PROTECTION, STANDARD 701606	L SUM	1	1
70102630	TRAFFIC CONTROL AND PROTECTION, STANDARD 701601	L SUM	1	1
70102632	TRAFFIC CONTROL AND PROTECTION, STANDARD 701602	L SUM	1	1
70102635	TRAFFIC CONTROL AND PROTECTION, STANDARD 701701	L SUM	1	1
* 88600600	DETECTOR LOOP REPLACEMENT	FOOT	30	30
X0325225	BRICK PAVEMENT REMOVAL AND REPLACEMENT	SQ FT	12	12
X5510100	STORM SEWER REMOVAL	FOOT	33	33
X5539700	STORM SEWERS TO BE CLEANED	FOOT	5185	5185
Z0004562	COMBINATION CONCRETE CURB AND GUTTER REMOVAL AND REPLACEMENT	FOOT	872	872
Z0018400	DRAINAGE STRUCTURES TO BE ADJUSTED	EACH	75	75
Z0018500	DRAINAGE STRUCTURES TO BE CLEANED	EACH	33	33
Z0018600	DRAINAGE STRUCTURES TO BE RECONSTRUCTED	EACH	20	20
Z0030850	TEMPORARY INFORMATION SIGNING	SQ FT	1080	1080
Z0037310	PAVEMENT PATCHING (FULL DEPTH)	SQ YD	203	203

\* Specialty Item

Rev.

FILE NAME *	USER NAME * _USER_	DESIGNED -	REVISED -	STATE OF ILLINOIS DEPARTMENT OF TRANSPORTATION		DRAINAGE REPAIRS SUMMARY OF QUANTITIES		F.A.P. RTE.	SECTION	COUNTY	TOTAL SHEETS	SHEET NO.
#FILE#		DRAWN - JJ	REVISED -					2010-065-T	COOK	14	3	
	PLOT SCALE = 4000.0000 1" / IN.	CHECKED - RS	REVISED -	SCALE: 20		SHEET NO. 1 OF 1 SHEETS		STA.		TO STA.		CONTRACT NO. 60L46
	PLOT DATE = 12/14/2010	DATE - 12-10-2010	REVISED -									ILLINOIS FED. AID PROJECT

STR #	ADDRESS	CITY	CATCH BASIN TO BE ADJUSTED (Each)	CATCH BASIN TO BE RECONSTRUCTED (Each)	CATCH BASIN TO BE REMOVED (Each)	CATCH BASIN TO BE REPLACED (Each)	INLET TO BE REMOVED (Each)	INLET TO BE REPLACED (Each)	INLET TO BE ADJUSTED (Each)	MANHOLE TO BE REMOVED (Each)	MANHOLE TO BE REPLACED (Each)	MANHOLE TO BE ADJUSTED (Each)	TYPE I FRAME & OPEN LID (Each)	TYPE 3 FRAME & GRATE (Each)	TYPE I FRAME & CLOSED LID (Each)	CLEAN LATERAL (ft)	CURB & GTRR REPAIR/ RPLCMT (ft)	CLEAN STRUCTR (Each)	SIDEWALK REMV & RPLC (ft <sup>2</sup> )	PVMNT PTCHING (yd <sup>2</sup> )	DRIVEWAY REMV & RPLC (YD <sup>2</sup> )	TRENCH BACKFILL (yd <sup>3</sup> )	ADDITIONAL COMMENTS
1	533 WILLIAMS ST	THORNTON	0	1	0	0	0	0	0	0	0	0	1	0	0	0	0	1	0	1.8	0	0	
2	18519 BURNHAM	LANSING	0	0	0	0	0	0	0	0	0	0	0	0	0	0	0	0	0	0.0	0	0	Repair Completed by Others
3	18211 TORRENCE	LANSING	0	0	0	0	0	0	0	0	0	0	0	0	0	0	0	0	0	0.0	0	0	Repair Completed by Others
4	170 28 TORRENCE	LANSING	0	0	0	0	0	0	0	0	0	0	0	0	0	0	0	0	0	0.0	0	0	Repair Completed by Others
5	14421 TORRENCE	CALUMET CITY	1	0	0	0	0	0	0	0	0	0	0	0	0	0	4	0	0	0.0	0	0	
6	696 142ND STREET	DOLTON	0	0	0	0	0	0	0	0	0	0	0	0	0	0	0	0	0	0.0	0	0	Repair Completed by Others
7	14311 LINCOLN HWY	DOLTON	0	1	0	0	0	0	0	0	0	0	1	0	0	0	8	1	0	2.0	0	0	
8	512 142ND STREET	DOLTON	0	0	1	1	0	0	0	0	0	0	0	0	0	0	10	1	0	2.0	0	0	
9	425 142ND STREET	DOLTON	0	0	1	1	0	0	0	0	0	0	1	0	0	10	10	0	0	11.1	0	0	Type A Catch Basin
10	13926 INDIANA	RIVERDALE	0	0	0	0	0	0	0	0	0	0	0	0	0	0	0	0	0	0.0	0	0	Repair Completed by Others
11	140TH AND INDIANA AVE S/B	DOLTON	0	1	0	0	0	0	0	0	0	0	1	0	0	0	4	0	0	0.9	0	0	
12	14344 INDIANA	DOLTON	0	0	0	0	1	1	0	0	0	0	0	0	0	0	9	0	0	1.3	0	0	
13	14400 INDIANA	DOLTON	0	1	0	0	0	0	0	0	0	0	1	0	0	40	4	0	0	0.9	0	0	
14	12700 HALSTED	CHICAGO	0	0	0	0	0	0	0	0	0	0	0	0	0	0	0	0	0	0.0	0	0	Repair Completed by Others
15	13500 WOOD STREET (UNDER VIADUCT 4)	RIVERDALE	0	0	0	0	0	0	0	0	0	0	0	0	0	0	0	0	0	0.0	0	0	Repair Completed by Others
16	16700 PARK	HARVEY	0	1	0	0	0	0	0	0	0	0	0	0	0	40	10	0	0	2.7	0	0	
17	16500 PARK	HARVEY	0	0	0	0	0	0	0	0	0	0	0	0	0	0	0	0	0	0.0	0	0	Repair Completed by Others
18	16459 PARK	HARVEY	1	0	0	0	0	0	0	0	0	0	0	1	0	40	14	0	0	0.4	0	0	
19	16259 PARK	HARVEY	1	0	0	0	0	0	0	0	0	0	1	0	0	40	2	0	0	0.9	0	0	
20	16300 PARK	HARVEY	0	0	0	0	0	0	0	0	0	0	1	0	0	40	2	0	0	0.0	0	0	
21	16159 PARK	HARVEY	1	0	0	0	0	0	0	0	0	0	0	0	0	40	6	0	0	0.7	0	0	
22	RT30 E/O GOVERNORS HWY	MATTESON	0	0	0	0	0	0	0	0	0	0	0	0	0	0	0	0	0	0.0	0	0	Repair Completed by Others
23	15900 CRAWFORD	MARKHAM	0	0	0	0	0	0	0	0	0	0	0	0	0	0	0	0	0	0.0	0	0	Repair Completed by Others
24	4458 SIBLEY	MIDLOTHAIN	0	0	0	0	0	0	0	0	0	0	0	0	0	0	0	0	0	0.0	0	0	Repair Completed by Others
25	13800 HALSTED	RIVERDALE	0	0	0	0	0	0	0	0	0	0	0	0	0	0	4	0	0	0.0	0	0	
26	18800 BURNHAM	LANSING	1	0	0	0	0	0	0	0	0	0	0	0	0	0	10	0	0	0.1	0	0	
27	17400 BURNHAM	LANSING	0	0	0	0	0	0	0	0	0	0	0	0	0	0	0	0	0	0.0	0	0	Repair Completed by Others
28	147TH & SAWYER	MIDLOTHAIN	1	0	0	0	0	0	0	0	0	0	0	0	0	40	6	1	0	0.0	0	0.9	
28A	1500 RIDGE ROAD	HOMEWOOD	0	1	0	0	0	0	0	0	0	0	0	0	0	40	10	1	0	3.3	0	1.5	
28B	1524 RIDGE ROAD	HOMEWOOD	0	0	0	0	1	1	0	0	0	0	0	0	0	40	8	0	0	2.7	0	2.0	
29	BROADWAY AT ST ANN ST	BLUE ISLAND	0	0	0	0	0	0	1	0	0	0	1	0	0	50	4	0	0	0.9	0	0	
30	BROADWAY E/O GREENWOOD	BLUE ISLAND	0	0	0	0	0	0	0	0	0	1	0	0	0	50	17	1	85	1.3	0	0	
31	3737 W 127TH ST	ALSIP	0	0	0	0	0	0	0	0	0	0	0	0	0	0	0	0	0	0.0	0	0	Repair Completed by Others
32	3000 W 127TH ST	BLUE ISLAND	1	0	0	0	0	0	0	0	0	0	0	0	0	50	10	0	0	0.9	0	0	
33	11809 KEDZIE	MERRIONETTE PK	1	0	0	0	0	0	0	0	0	0	0	0	0	50	8	1	0	1.8	0	0	
34	12200 KEDZIE	ALSIP	0	0	0	0	0	0	0	0	0	0	0	0	0	0	0	0	0	0.0	0	0.0	Repair Completed by Others
35	4225 W 115TH	ALSIP	1	0	0	0	0	0	0	0	0	0	0	0	0	50	6	0	0	1.3	0	0	
36	4455 SOUTHWEST HWY	HOMETOWN	0	0	0	0	1	1	0	0	0	0	0	0	0	50	12	0	0	8.0	0	2.0	

STR #	ADDRESS	CITY	CATCH BASIN TO BE ADJUSTED (Each)	CATCH BASIN TO BE RECONSTRUCTED (Each)	CATCH BASIN TO BE REMOVED (Each)	CATCH BASIN TO BE REPLACED (Each)	INLET TO BE REMOVED (Each)	INLET TO BE REPLACED (Each)	INLET TO BE ADJUSTED (Each)	MANHOLE TO BE REMOVED (Each)	MANHOLE TO BE REPLACED (Each)	MANHOLE TO BE ADJUSTED (Each)	TYPE 1 FRAME & OPEN LID (Each)	TYPE 3 FRAME & GRATE (Each)	TYPE 1 FRAME & CLOSED LID (Each)	CLEAN LATERAL (ft)	CURB & GTR RPAIR/RPLCMT (ft)	CLEAN STRUCTR (Each)	SIDEWALK REMV & RPLC (ft <sup>2</sup> )	PVMNT PTCHNG (yd <sup>2</sup> )	DRIVEWAY REMV & RPLC (YD <sup>2</sup> )	TRENCH BACKFILL (yd <sup>3</sup> )	ADDITIONAL COMMENTS
37	4413 SOUTHWEST HWY	HOMETOWN	0	0	0	0	0	0	1	0	0	0	0	0	0	50	6	0	0	4.4	0	0	
38	8835 S CICERO	OAK LAWN	1	0	0	0	0	0	0	0	0	0	1	0	0	50	10	0	0	8.0	0	0	Detector Loop Replacement - 30 feet
39	8757 S CICERO	OAK LAWN	1	0	0	0	0	0	0	0	0	0	1	0	0	50	6	0	0	1.3	0	0	
40	8702 S CICERO	OAK LAWN	1	0	0	0	0	0	0	0	0	0	1	0	0	50	4	0	0	0.9	0	2.0	
41	8820 S CICERO	OAK LAWN	0	0	0	0	0	0	0	0	0	0	0	0	0	0	0	0	0	0.0	0	0	Repair Completed by Others
42	8940 S CICERO	OAK LAWN	1	0	0	0	0	0	0	0	0	0	1	0	0	50	6	1	0	2.0	0	2.0	
43	9440 S CICERO	OAK LAWN	1	0	0	0	0	0	0	0	0	0	0	0	0	50	12	0	0	2.0	0	2.0	
44	10320 S CICERO	OAK LAWN	1	0	0	0	0	0	0	0	0	0	0	0	0	50	10	0	0	1.3	0	2.0	
45	10800 S CICERO	OAK LAWN	1	0	0	0	0	0	0	0	0	0	0	0	0	50	9	1	0	0.4	0	0	
46	10900 S CICERO	OAK LAWN	1	0	0	0	0	0	0	0	0	0	0	0	0	50	6	0	0	0.4	0	0	
47	11310 S CICERO	ALSIP	1	0	0	0	0	0	0	0	0	0	0	0	0	50	8	0	0	0.9	0	2.0	
48	11420 S CICERO	ALSIP	1	0	0	0	0	0	0	0	0	0	0	0	0	50	0	0	0	0.0	0	2.0	
49	11400 S CICERO	ALSIP	1	0	0	0	0	0	0	0	0	0	0	0	0	50	7	0	0	0.4	0	2.0	
50	10121 S CICERO	OAK LAWN	0	1	0	0	0	0	0	0	0	0	0	0	0	50	14	1	112	4.4	0	5.0	
51	9643 S CICERO	OAK LAWN	1	0	0	0	0	0	0	0	0	0	0	0	0	50	12	0	0	1.3	0	0	
52	13642 S CICERO	CRESTWOOD	1	0	0	0	0	0	0	0	0	0	0	0	0	50	6	0	0	0.4	0	0	
53	13716 S CICERO	CRESTWOOD	1	0	0	0	0	0	0	0	0	0	0	0	0	50	6	0	0	0.4	0	0	
54	14226 S CICERO	CRESTWOOD	1	0	0	0	0	0	0	0	0	0	0	0	0	50	6	0	0	0.4	0	0	
55	14300 S CICERO	CRESTWOOD	1	0	0	0	0	0	0	0	0	0	0	0	0	50	6	0	0	0.4	0	0	
56	14330 S CICERO	CRESTWOOD	1	0	0	0	0	0	0	0	0	0	0	0	0	50	4	1	0	0.9	0	0	
57	14501 S CICERO	CRESTWOOD	0	0	0	0	1	1	0	0	0	0	0	0	0	50	10	0	0	4.4	0	0	
58	14301 S CICERO	CRESTWOOD	1	0	0	0	0	0	0	0	0	0	0	0	0	50	10	0	0	1.3	0	2.0	
59	14301 S CICERO	CRESTWOOD	0	0	0	0	0	0	0	0	0	0	0	0	0	0	0	0	0	0.0	0	0	Repair Completed by Others
60	14149 S CICERO	CRESTWOOD	1	0	0	0	0	0	0	0	0	0	1	0	0	50	10	0	0	6.7	0	2.0	
61	13233 S CICERO	CRESTWOOD	1	0	0	0	0	0	0	0	0	0	1	0	0	50	11	1	0	1.3	0	2.0	Brick pavement rem. & replcmnt. - 12 SF
62-1	11921 S CICERO	ALSIP	0	0	1	1	0	0	0	0	0	0	0	0	0	50	15	0	0	10.0	0	5	Type A Catch Basin
62-2	11921 S CICERO	ALSIP	0	0	0	0	0	0	0	1	1	0	1	0	0	0	0	0	0	0.0	15	2	
63	117TH AND SOUTHWEST HWY	PALOS HEIGHTS	0	1	0	0	0	0	0	0	0	0	1	0	0	50	10	0	0	6.7	0	0	
64	11920 SOUTHWEST HWY	PALOS PARK	1	0	0	0	0	0	0	0	0	0	0	0	0	50	8	0	0	1.7	0	2.0	
65	11932 SOUTHWEST HWY	PALOS PARK	1	0	0	0	0	0	0	0	0	0	0	0	0	50	8	0	0	4.0	0	0	
66	12002 SOUTHWEST HWY	PALOS PARK	1	0	0	0	0	0	0	0	0	0	1	0	0	50	9	0	0	1.8	0	2.0	
67	SOUTHWEST HWY S/O TIMBER LANE	PALOS PARK	1	0	0	0	0	0	0	0	0	0	0	0	0	50	8	0	0	3.6	0	2.0	
68	12108 SOUTHWEST HWY	PALOS PARK	1	0	0	0	0	0	0	0	0	0	0	0	0	50	11	0	0	3.7	0	0	
69	12108 SOUTHWEST HWY	PALOS PARK	1	0	0	0	0	0	0	0	0	0	0	0	0	50	12	0	0	4.0	0	2.0	
70	11919 SOUTHWEST HWY	PALOS PARK	0	0	0	0	0	0	0	0	0	0	0	0	0	0	0	0	0	0.0	0	0.0	Repair Completed by Others
71	11111 SOUTHWEST HWY	PALOS PARK	1	0	0	0	0	0	0	0	0	0	0	0	0	50	4	0	0	0.4	0	0	
72	10509 S HARLEM	PALOS PARK	0	0	0	0	0	0	1	0	0	0	0	0	0	50	0	0	0	0.0	0	0	
73	10343 S HARLEM	PALOS PARK	0	0	0	0	0	0	0	0	0	0	1	0	0	50	5	0	0	0.0	0	0	

FILE NAME =	USER NAME = _USER_	DESIGNED -	REVISED -	<b>STATE OF ILLINOIS DEPARTMENT OF TRANSPORTATION</b>	<b>DRAINAGE REPAIRS SCHEDULE OF QUANTITIES</b>	F.A.P. RTE.	SECTION	COUNTY	TOTAL SHEETS	SHEET NO.
#FILE#		DRAWN - JJ	REVISED -			*	2010-065-T	COOK	14	5
PLOT SCALE = 48.0/0000 1" = 100'		CHECKED - RS	REVISED -			* VARIOUS				CONTRACT NO. 60L46
PLOT DATE = 12/7/2010		DATE - 12-10-2010	REVISED -			SCALE: 20	SHEET NO. 2 OF 4 SHEETS	STA.	TO STA.	ILLINOIS FED. AID PROJECT

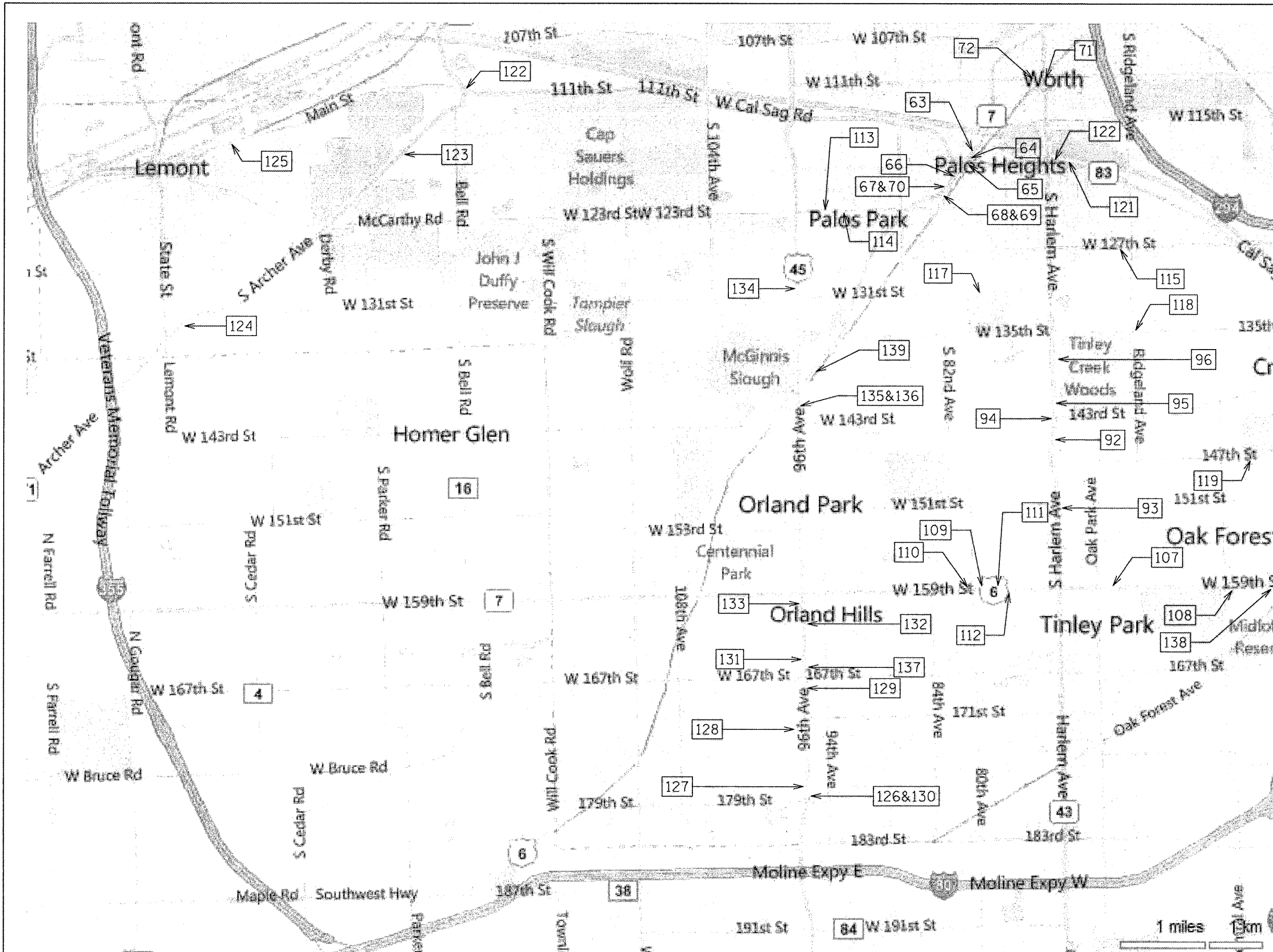
STR #	ADDRESS	CITY	CATCH BASIN TO BE ADJUSTED (Each)	CATCH BASIN TO BE RECONSTRUCTED (Each)	CATCH BASIN TO BE REMOVED (Each)	CATCH BASIN TO BE REPLACED (Each)	INLET TO BE REMOVED (Each)	INLET TO BE REPLACED (Each)	INLET TO BE ADJUSTED (Each)	MANHOLE TO BE REMOVED (Each)	MANHOLE TO BE REPLACED (Each)	MANHOLE TO BE ADJUSTED (Each)	TYPE I FRAME & OPEN LID (Each)	TYPE 3 FRAME & GRATE (Each)	TYPE I FRAME & CLOSED LID (Each)	CLEAN LATERAL (ft)	CURB & GTRR REPAIR/ RPLCMT (ft)	CLEAN STRUCTR (Each)	SIDEWALK REMV & RPLC (ft <sup>2</sup> )	PVMNT PTCHNG (yd <sup>2</sup> )	DRIVEWAY REMV & RPLC (YD <sup>2</sup> )	TRENCH BACKFILL (yd <sup>3</sup> )	ADDITIONAL COMMENTS
74	10333 S HARLEM	PALOS HILLS	0	0	0	0	0	0	0	0	0	0	1	0	0	50	0	0	0	0.0	0	0	
75	9500 S HARLEM (RAMP W/B TO 95TH) N/B	OAK LAWN	0	0	0	0	0	0	0	0	0	0	0	0	0	0	0	0	0	0.0	0	0	Repair Completed by Others
76-1	7200 W 95TH ( RAMP S/B TO HARLEM)	OAK LAWN	0	1	0	0	0	0	0	0	0	0	0	0	0	50	6	0	0	1.3	0	0	
76-2	7200 W 95TH ( RAMP S/B TO HARLEM)	OAK LAWN	0	1	0	0	0	0	0	0	0	0	0	1	0	50	12	0	0	1.3	0	0	
76-3	7200 W 95TH ( RAMP S/B TO HARLEM)	OAK LAWN	1	0	0	0	0	0	0	0	0	0	0	1	0	50	0	0	0	0.0	0	0	
77	9500 S HARLEM ( RAMP E/B 95TH ST)	OAK LAWN	1	0	0	0	0	0	0	0	0	0	0	0	0	50	0	1	0	0.9	0	0	
78	10268 S HARLEM	PALOS PARK	0	0	0	0	0	0	0	0	0	0	0	0	0	0	0	0	0	0.0	0	0	Repair Completed by Others
79	10558 S HARLEM	PALOS HILLS	0	0	0	0	0	0	0	0	0	1	0	0	0	50	4	0	0	0.0	0	0	
80	10716 S HARLEM	WORTH	1	0	0	0	0	0	0	0	0	0	0	0	0	0	5	0	0	0.0	0	0	
81	11015 S HARLEM	WORTH	1	0	0	0	0	0	0	0	0	0	1	0	0	50	10	1	0	0.0	0	0	
82	10607 S HARLEM	WORTH	1	0	0	0	0	0	0	0	0	0	0	0	0	50	5	0	0	0.0	0	0	
83	7117 W 111TH ST	WORTH	1	0	0	0	0	0	0	0	0	0	0	0	0	50	6	0	0	0.0	0	1	
84	5601 W 111TH	CHICAGO RIDGE	0	0	0	0	0	0	0	0	0	0	0	0	0	0	0	0	0	0.0	0	0	Repair Completed by Others
85	111TH ST W/O SOUTHWEST HWY	PALOS HILLS	1	0	0	0	0	0	0	0	0	0	1	0	0	50	8	0	0	0.9	0	2.0	
86	11930 KEDZIE	ALSIP	1	0	0	0	0	0	0	0	0	0	0	0	0	50	10	0	0	2.0	0	1.7	
87	HARLEM S/O RT83	PALOS HEIGHTS	1	0	0	0	0	0	0	0	0	0	0	0	0	50	4	0	0	0.4	0	0	
88	12634 S HARLEM	PALOS HEIGHTS	1	0	0	0	0	0	0	0	0	0	0	0	0	50	11	0	0	1.3	0	2.0	
89	12800 S HARLEM	PALOS HEIGHTS	1	0	0	0	0	0	0	0	0	0	0	0	0	50	4	0	0	0.4	0	0	
90	13000 S HARLEM	PALOS HEIGHTS	1	0	0	0	0	0	0	0	0	0	0	0	0	50	4	0	0	0.4	0	0	
91	13502 S HARLEM	ORLAND PARK	0	1	0	0	0	0	0	0	0	0	0	0	0	50	4	1	0	0.4	0	0	
92	14500 S HARLEM	ORLAND PARK	1	0	0	0	0	0	0	0	0	0	1	0	0	50	6	0	0	0.9	0	1	
93	15148 S HARLEM	ORLAND PARK	1	0	0	0	0	0	0	0	0	0	0	0	0	50	8	0	0	0.4	0	0	
94	14300 S HARLEM	ORLAND PARK	1	0	0	0	0	0	0	0	0	0	1	0	0	50	8	1	0	0.4	0	0	
95	14253 S HARLEM	ORLAND PARK	1	0	0	0	0	0	0	0	0	0	0	0	0	50	13	1	0	0.4	0	0	
96	13900 S HARLEM	ORLAND PARK	1	0	0	0	0	0	0	0	0	0	0	0	0	50	9	0	0	0.4	0	0	
97	13456 S HARLEM	ORLAND PARK	0	1	0	0	0	0	0	0	0	0	0	0	0	50	10	0	0	2.0	0	2.0	
98	12755 S HARLEM	PALOS HEIGHTS	1	0	0	0	0	0	0	0	0	0	0	0	0	50	8	0	0	0.4	0	0	
99	12500 S HARLEM	PALOS HEIGHTS	1	0	0	0	0	0	0	0	0	0	0	0	0	50	5	1	0	0.9	0	2.0	
100	12400 S HARLEM	PALOS HEIGHTS	0	1	0	0	0	0	0	0	0	0	0	0	0	50	9	1	0	4.7	0	2.0	
101	12307 S HARLEM	PALOS HEIGHTS	0	1	0	0	0	0	0	0	0	0	0	0	0	50	10	1	0	4.0	0	3	
102	12207 S HARLEM	PALOS HEIGHTS	1	0	0	0	0	0	0	0	0	0	0	0	0	50	4	1	0	0.9	0	1	
103	12217 S HARLEM	PALOS HEIGHTS	1	0	0	0	0	0	0	0	0	0	1	0	0	50	4	0	0	0.4	0	1	
104	12001 S HARLEM	PALOS HEIGHTS	1	0	0	0	0	0	0	0	0	0	1	0	0	50	4	1	0	0.4	0	1	
105	11925 S HARLEM	PALOS HEIGHTS	1	0	0	0	0	0	0	0	0	0	0	0	0	50	4	1	0	0.4	0	1	
106	11800 S HARLEM	PALOS HEIGHTS	1	0	0	0	0	0	0	0	0	0	0	0	0	50	4	0	0	0.4	0	2.0	
107	6701 W 159TH	TINLEY PARK	1	0	0	0	0	0	0	0	0	0	0	0	0	50	0	0	0	0.0	0	2.0	
108	5751 W 159TH	OAK FOREST	1	0	0	0	0	0	0	0	0	0	0	0	0	50	0	0	0	0.0	0	2.0	
109	7940 W 159TH	TINLEY PARK	1	0	0	0	0	0	0	0	0	0	0	0	0	50	13	0	4	2.0	0	1	

STR #	ADDRESS	CITY	CATCH BASIN TO BE ADJUSTED (Each)	CATCH BASIN TO BE RECONSTRUCTED (Each)	CATCH BASIN TO BE REMOVED (Each)	CATCH BASIN TO BE REPLACED (Each)	INLET TO BE REMOVED (Each)	INLET TO BE REPLACED (Each)	INLET TO BE ADJUSTED (Each)	MANHOLE TO BE REMOVED (Each)	MANHOLE TO BE REPLACED (Each)	MANHOLE TO BE ADJUSTED (Each)	TYPE I FRAME & OPEN LID (Each)	TYPE 3 FRAME & GRATE (Each)	TYPE I FRAME & CLOSED LID (Each)	CLEAN LATERAL (ft)	CURB & GTRR REPAIR/RPLCMT (ft)	CLEAN STRUCTR (Each)	SIDEWALK REMV & RPLC (ft <sup>2</sup> )	PVMNT PTCHNG (yd <sup>2</sup> )	DRIVEWAY REMV & RPLC (YD <sup>2</sup> )	TRENCH BACKFILL (yd <sup>3</sup> )	ADDITIONAL COMMENTS
110	8400 W 159TH	ORLAND PARK	1	0	0	0	0	0	0	0	0	0	0	0	0	50	7	0	N/A	0.4	0	1	
111	7800 W 159TH	TINLEY PARK	1	0	0	0	0	0	0	0	0	0	0	0	0	50	12	0	0	0.4	0	0	
112	7509 W 159TH	TINLEY PARK	0	1	0	0	0	0	0	0	0	0	0	0	0	50	0	0	0	0.0	0	0	SEE NOTE 1
113	9301 W 123RD	PALOS PARK	0	0	0	0	0	0	0	0	0	0	0	0	0	0	0	0	0	0.0	0	0	Repair Completed by Others
114	8901 W 123RD	PALOS PARK	0	0	0	0	0	0	0	0	0	0	0	0	0	0	0	0	0	0.0	0	0	Repair Completed by Others
115	6411 W 127TH	PALOS HEIGHTS	0	0	0	0	0	0	0	0	0	0	0	0	0	0	0	0	0	0.0	0	0	Repair Completed by Others
116	7101 W 95TH	OAK LAWN	0	1	0	0	0	0	0	0	0	0	0	0	0	50	8	1	0	1.3	0	2	
117	79TH AV AT 131ST	PALOS HEIGHTS	0	0	0	0	0	0	1	0	0	0	0	0	0	50	5	0	0	0.6	0	1	
118	135TH E/O RIDGELAND	COOK COUNTY	1	0	0	0	0	0	0	0	0	0	0	0	0	50	8	0	0	0.4	0	2	
119	5333 W 147TH	OAK FOREST	0	0	0	1	1	0	0	0	0	0	1	0	0	20	0	0	0	7.0	0	0	SEE NOTE 2
120	7213 RT83	PALOS HEIGHTS	0	0	1	1	0	0	0	0	0	0	0	0	0	50	12	0	0	2.7	0	3	Type A Catch Basin
121	71ST AV AT RT83	PALOS HEIGHTS	0	1	0	0	0	0	0	0	0	0	0	0	0	50	6	0	0	0.7	0	1	
122	IL 171 S/O MAIN	LEMONT	0	1	0	0	0	0	0	0	0	0	0	0	0	50	9	1	0	0.4	0	0	
123	11870 IL171	LEMONT	0	0	0	0	0	0	0	0	0	0	0	0	0	50	0	0	0	0.0	0	2	
124	13206 IL 171	LEMONT	0	0	0	0	0	0	0	0	0	0	0	0	0	40	0	0	0	0.0	0	2	
125	MAIN ST E/O WHEELER	LEMONT	0	1	0	0	0	0	0	0	0	0	0	0	0	55	0	0	0	0.0	0	3	SEE NOTE 3
126	17803 RT45	ORLAND PARK	1	0	0	0	0	0	0	0	0	0	1	0	0	50	14	1	0	1.3	0	2	
127	17701 RT 45	ORLAND PARK	1	0	0	0	0	0	0	0	0	0	1	0	0	50	0	0	0	2.7	0	2	
128	17301 RT 45	ORLAND PARK	1	0	0	0	0	0	0	0	0	0	0	0	0	50	34	1	0	6.7	0	4.4	
129	16858 RT 45	ORLAND PARK	1	0	0	0	0	0	0	0	0	0	0	0	0	50	19	1	0	3.3	0	2.2	
130	17801 RT 45	ORLAND PARK	1	0	0	0	0	0	0	0	0	0	0	0	0	50	23	1	0	2.6	0	2	
131	16603 RT 45	ORLAND PARK	1	0	0	0	0	0	0	0	0	0	1	0	0	50	14	1	0	0.4	0	2	
132	16157 RT 45	ORLAND PARK	1	0	0	0	0	0	0	0	0	0	0	0	0	50	11	1	0	1.0	0	1	
133	16057 RT 45	ORLAND PARK	1	0	0	0	0	0	0	0	0	0	1	0	0	50	12	1	0	0.7	0	1	
134	13061 RT 45	ORLAND PARK	1	0	0	0	0	0	0	0	0	0	0	0	0	50	11	1	0	0.7	0	1	
135	14100 RT 45	ORLAND PARK	0	0	0	0	0	0	0	0	0	0	0	0	0	0	0	0	0	0.0	0	0	Repair Completed by Others
136	14150 RT 45	ORLAND PARK	0	0	0	0	0	0	0	0	0	0	0	0	0	0	0	0	0	0.0	0	0	Repair Completed by Others
137	16640 RT 45	ORLAND PARK	0	1	0	0	0	0	0	0	0	0	0	0	0	50	8	0	0	0.7	0	0	
138	5323 W 159TH ST	OAK FOREST	0	0	0	0	0	0	0	0	0	0	0	0	0	0	0	0	0	0.0	0	0	Repair Completed by Others
139	13641 SOUTHWEST HWY	ORLAND PARK	0	0	0	0	0	0	0	0	0	0	0	0	0	0	0	0	0	0.0	0	0	Repair Completed by Others
			75	20	4	5	5	4	4	1	1	2	30	3	0	5185	872	33	201	203	15	109	

**NOTE 1** 5 CY Furnished Excavation is incidental to the reconstruction of this structure

**NOTE 2** 13 Feet Storm Sewer Removal, 10 Feet 12" RCP AND FES, Type C Catch Basin, 10 SY Rip Rap Class A3 and Filter Fabric

**NOTE 3** 20 Feet Storm Sewer Removal, 20 Feet 12" RCP, 25 SY Rip Rap Class A3



126 → = STRUCTURE NUMBER AND LOCATION

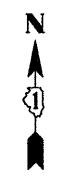
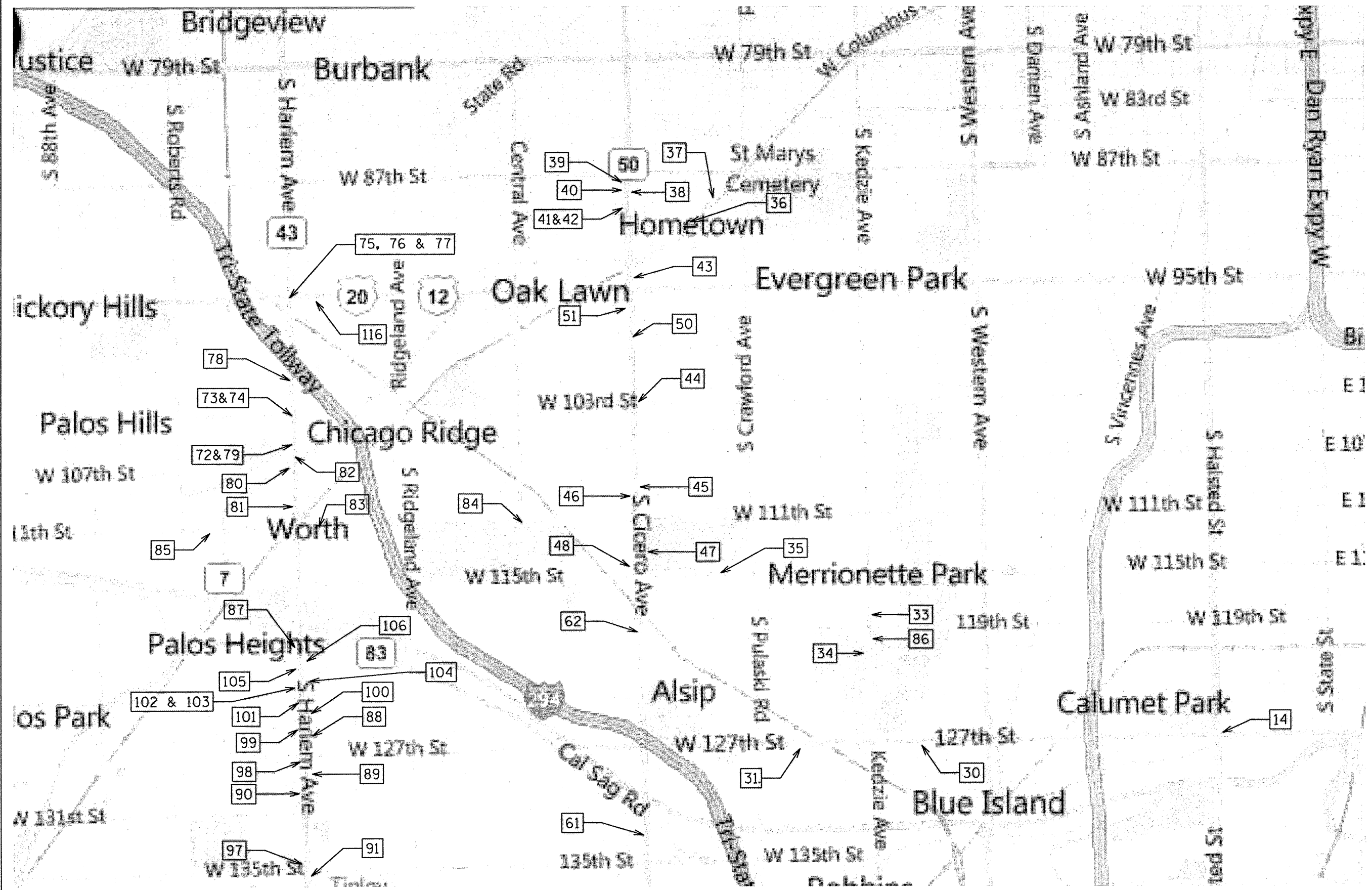
FILE NAME :	USER NAME = .USER.	DESIGNED -	REVISED -
#FILE#		DRAWN - JJ	REVISED -
	PLOT SCALE = 48,0000' / IN.	CHECKED - RS	REVISED -
	PLOT DATE = 12/7/2010	DATE - 12-10-2010	REVISED -

**STATE OF ILLINOIS**  
**DEPARTMENT OF TRANSPORTATION**

<b>DRAINAGE REPAIRS</b>			
<b>LOCATION MAP</b>			
SCALE: 20	SHEET NO. 1 OF 3 SHEETS	STA.	TO STA.

F.A.P. RTE.	SECTION	COUNTY	TOTAL SHEETS	SHEET NO.
•	2010-065-T	COOK	14	8
•	VARIOUS		CONTRACT NO. 60L46	
ILLINOIS FED. AID PROJECT				





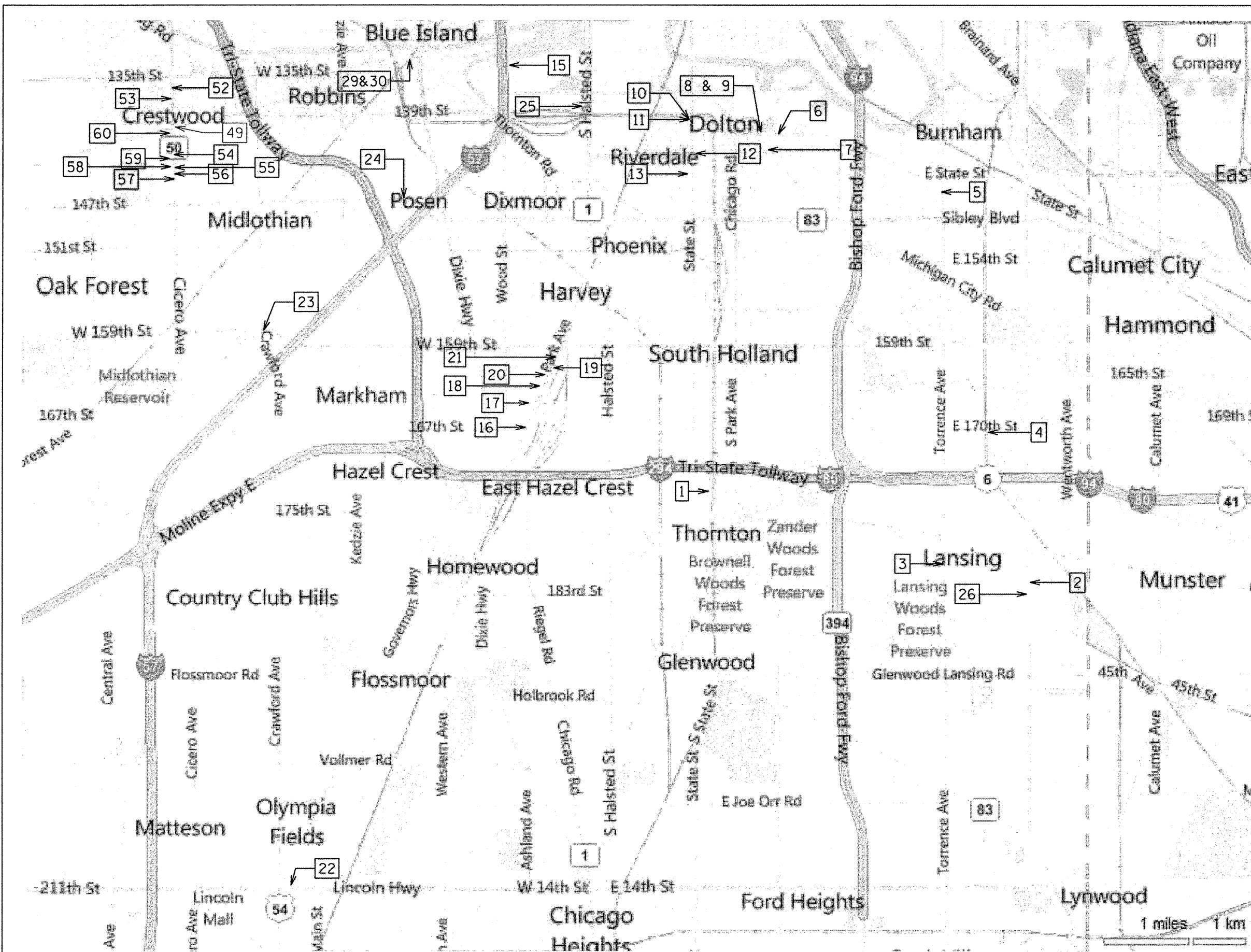
126 - STRUCTURE NUMBER AND LOCATION

FILE NAME =	USER NAME = .USER.	DESIGNED -	REVISED -
*FILE#		DRAWN - JJ	REVISED -
		CHECKED - RS	REVISED -
		DATE - 12-10-2010	REVISED -

**STATE OF ILLINOIS  
DEPARTMENT OF TRANSPORTATION**

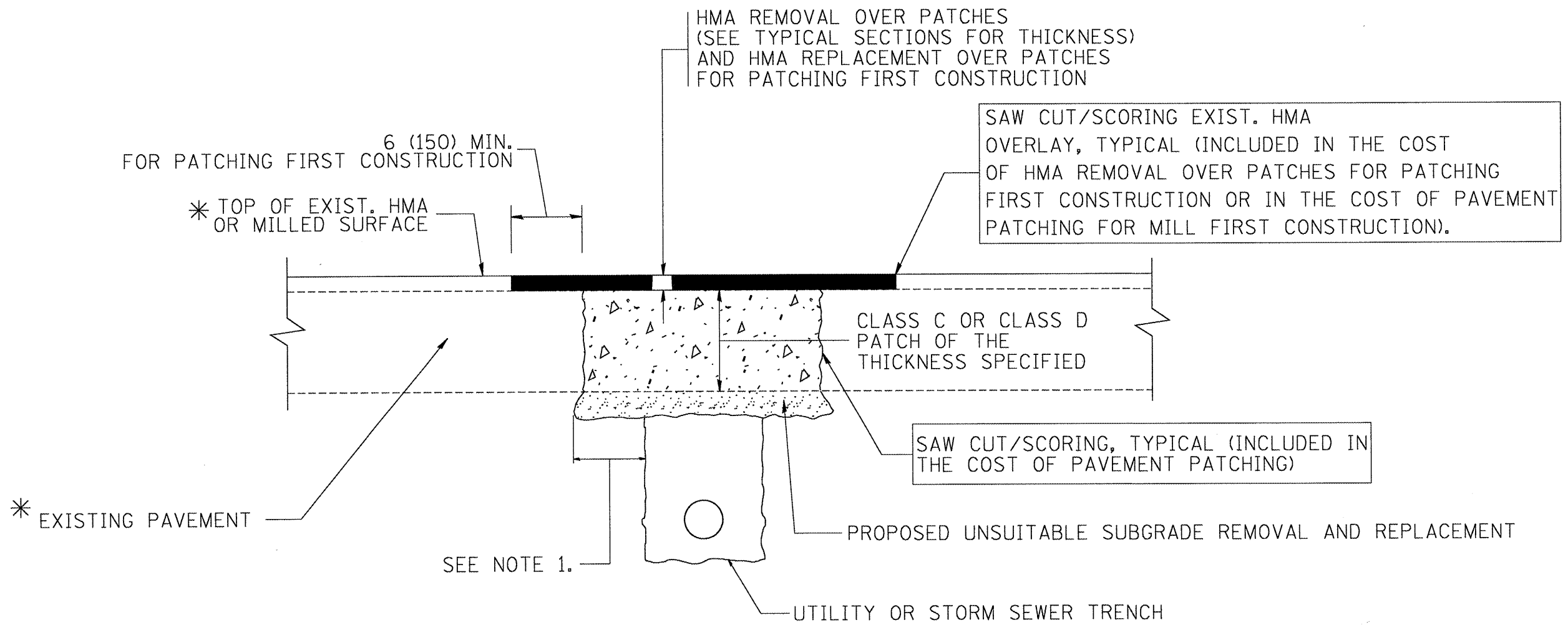
<b>DRAINAGE REPAIRS LOCATION MAP</b>	
SCALE: 20	SHEET NO. 2 OF 3 SHEETS STA. TO STA.

F.A.P. RTE.	SECTION	COUNTY	TOTAL SHEETS	SHEET NO.
•	2010-065-T	COOK	14	9
•	VARIOUS	CONTRACT NO. 60L46		
ILLINOIS FED. AID PROJECT				



126 → = STRUCTURE NUMBER AND LOCATION

FILE NAME *	USER NAME * _USER_	DESIGNED -	REVISED -	<b>STATE OF ILLINOIS DEPARTMENT OF TRANSPORTATION</b>	<b>DRAINAGE REPAIRS LOCATION MAP</b>				F.A.P. RTE.	SECTION	COUNTY	TOTAL SHEETS	SHEET NO.
#FILE#		DRAWN - JJ	REVISED -		SCALE: 20	SHEET NO. 3 OF 3 SHEETS	STA.	TO STA.	• 2010-065-T	COOK	14	10	
		CHECKED - RS	REVISED -						• VARIOUS	CONTRACT NO. 60L46			
		DATE - 12-10-2010	REVISED -						ILLINOIS FED. AID PROJECT				



\* SEE TYPICAL SECTIONS FOR THICKNESS AND MATERIALS

**NOTES:**

1. THE WIDTH OF THE FULL DEPTH PATCH OVER A TRENCH SHALL BE 12 (300) WIDER ON EACH SIDE OF THE TRENCH.
2. FOR METHOD OF MEASUREMENT AND BASIS OF PAYMENT, SEE RECURRING SPECIAL PROVISION "PATCHING WITH HOT-MIX ASPHALT OVERLAY REMOVAL".

**SEQUENCE OF CONSTRUCTION (PATCHING FIRST)**

1. REMOVE THE EXISTING HMA MATERIAL OVER THE AREA TO BE PATCHED.
2. REMOVE AND REPLACE WITH CLASS C OR D PATCH.
3. REPLACE HMA MATERIAL OVER THE AREA TO BE PATCHED.

**SEQUENCE OF CONSTRUCTION (MILLING FIRST)**

1. MILL HMA FIRST IF THERE IS AT LEAST 4 1/2 INCHES OR MORE OF HMA MATERIAL ON TOP OF THE EXISTING PAVEMENT OR IF THE PAVEMENT IS FULL DEPTH HMA. A MINIMUM OF 2 INCHES OF HMA MATERIAL SHALL BE IN PLACE AFTER MILLING.
2. REMOVE AND REPLACE WITH FULL DEPTH CLASS D PATCHES TO TOP OF MILLED SURFACE.

ALL DIMENSIONS ARE IN INCHES (MILLIMETERS) UNLESS OTHERWISE SHOWN.

FILE NAME = c:\projects\dstatd22x34\bd22.dgn	USER NAME = bauerdl	DESIGNED - R. SHAH	REVISED - A. ABBAS 04-27-98
		DRAWN -	REVISED - R. BORO 01-01-07
	PLOT SCALE = 50.000' / IN.	CHECKED -	REVISED - R. BORO 09-04-07
	PLOT DATE = 10/27/2008	DATE - 10-25-94	REVISED - K. ENG 10-27-08

**STATE OF ILLINOIS  
DEPARTMENT OF TRANSPORTATION**

**PAVEMENT PATCHING FOR  
HMA SURFACED PAVEMENT**

SCALE: NONE SHEET NO. 1 OF 1 SHEETS STA. TO STA.

F.A. RTE.	SECTION	COUNTY	TOTAL SHEETS	SHEET NO.
2010-065-T		Cook	14	11
<b>BD400-04 (BD-22)</b>		<b>CONTRACT NO.</b>		
FED. ROAD DIST. NO. 1 ILLINOIS FED. AID PROJECT				

VARIABLE - TO MEET EXISTING DIMENSIONS AND FIELD CONDITIONS (SEE NOTE ②)

PROP. CONC. CURB OR CURB AND GUTTER REPLACEMENT IN ACCORDANCE WITH STATE STANDARD 606001. (SEE NOTE ②)

SAW CUT FULL DEPTH - INCLUDED IN THE COST OF SIDEWALK, DRIVEWAY OR MEDIAN SURFACE REMOVAL PAY ITEM.

SEE STATE STANDARD 606001

18" (450) MAX.

EXISTING OR PROPOSED HMA SURFACE (IF APPLICABLE)

1/4" (5) \*\*

EXISTING SIDEWALK, DRIVEWAY, MEDIAN SURFACE, SOD OR GROUND.

PROPOSED SIDEWALK, DRIVEWAY PAVEMENT, MEDIAN SURFACE OR SODDING SALT TOLERANT WITH TOP SOIL, 4" (100) SOD RESTORATION (SEE NOTE ①).

EXISTING CONCRETE PAVEMENT, CONCRETE BASE COURSE OR FLEXIBLE PAVEMENT

3" (75) MIN.

SUITABLE BACKFILL MATERIAL (INCLUDED IN THE COST OF CURB OR CURB AND GUTTER REMOVAL AND REPLACEMENT)

PROPOSED 3/4" (20) PREFORMED EXPANSION JOINT AT CONCRETE SIDEWALKS, DRIVEWAYS, AND MEDIANS. (INCLUDED IN THE COST OF CURB OR CURB AND GUTTER REMOVAL AND REPLACEMENT.)

\* 3" (75) MINIMUM FROM TOP AND BOTTOM OF THE CONCRETE PAVEMENT OR BASE COURSE.

\*\* IF THE FINAL SURFACE OF THE PAVEMENT IS CONCRETE, THE GUTTER IS TO BE FLUSH WITH THE PAVEMENT.

NOTE: ① SIDEWALK, DRIVEWAY PAVEMENT OR MEDIAN SURFACE SHALL BE SIMILAR TO THE MATERIAL BEING REMOVED AND WILL BE PAID FOR SEPARATELY.

SODDING, SALT TOLERANT AND TOP SOIL, FURNISH AND PLACE 4" WILL BE PAID FOR SEPARATELY,

② FERTILIZER FOR THE PLACEMENT OF THE SOD IS NOT REQUIRED

③ CURB OR CURB AND GUTTER REPLACEMENT SHALL MATCH THE SHAPE OF THE EXISTING CURB OR CURB AND GUTTER UNLESS OTHERWISE SPECIFIED.

④ FOR CURB OR CURB AND GUTTER REMOVAL AND REPLACEMENT ADJACENT TO FLEXIBLE PAVEMENT DELETE EPOXY COATED TIE BARS.

⑤ LONGITUDINAL BARS, IF ENCOUNTERED IN THE EXISTING CURB OR CURB AND GUTTER, ARE NOT TO BE REPLACED. CUTTING AND REMOVING LONGITUDINAL BARS SHALL BE INCLUDED IN THE COST OF CURB OR CURB AND GUTTER REMOVAL AND REPLACEMENT.

⑥ THE COST OF HMA SURFACE REMOVAL IN THE EXISTING GUTTER FLAG SHALL BE INCLUDED IN THE COST OF THE CURB AND GUTTER REMOVAL AND REPLACEMENT.

⑦ THE REMOVAL AND REPLACEMENT OF THE EXISTING CURB OR CURB AND GUTTER SHALL BE DONE IN ACCORDANCE WITH THE APPLICABLE PORTIONS OF SECTION 440 AND 606 OF THE STANDARD SPECIFICATIONS.

⑧ THE LOCATIONS OF REMOVAL AND REPLACEMENT OF EXISTING CURB OR CURB AND GUTTER SHALL BE DETERMINED BY THE RESIDENT ENGINEER AT THE TIME OF CONSTRUCTION.

UNSUITABLE SUB-BASE MATERIAL TO BE REMOVED, IF DIRECTED BY THE ENGINEER, SHALL BE REPLACED WITH EITHER SUB-BASE GRANULAR MATERIAL, TYPE B OR ADDITIONAL THICKNESS OF CONCRETE.

REMOVAL AND REPLACEMENT 4" (100) OR LESS IS INCLUDED IN THE COST OF CURB OR CURB AND GUTTER REMOVAL AND REPLACEMENT.

REMOVAL AND REPLACEMENT IN EXCESS OF 4" (100) WILL BE PAID FOR IN ACCORDANCE WITH ARTICLE 109.04 OF THE STANDARD SPECIFICATIONS.

PROPOSED #6 (20) EPOXY COATED TIE BARS 24" (600) LONG AT 24" (600) CENTERS WILL NOT BE PAID FOR SEPARATELY. DELETE EPOXY COATED TIE BARS IF EXISTING TIE BARS ARE USUABLE AS DETERMINED BY THE ENGINEER. (SEE NOTE ③).

BASIS OF PAYMENT:

THIS WORK WILL BE PAID FOR AT THE CONTRACT UNIT PRICE PER FOOT (METER) FOR "CURB REMOVAL AND REPLACEMENT" OR "COMBINATION CONCRETE CURB AND GUTTER REMOVAL AND REPLACEMENT".

# CURB OR CURB AND GUTTER REMOVAL AND REPLACEMENT

ALL DIMENSIONS ARE IN INCHES (MILLIMETERS) UNLESS OTHERWISE SHOWN.

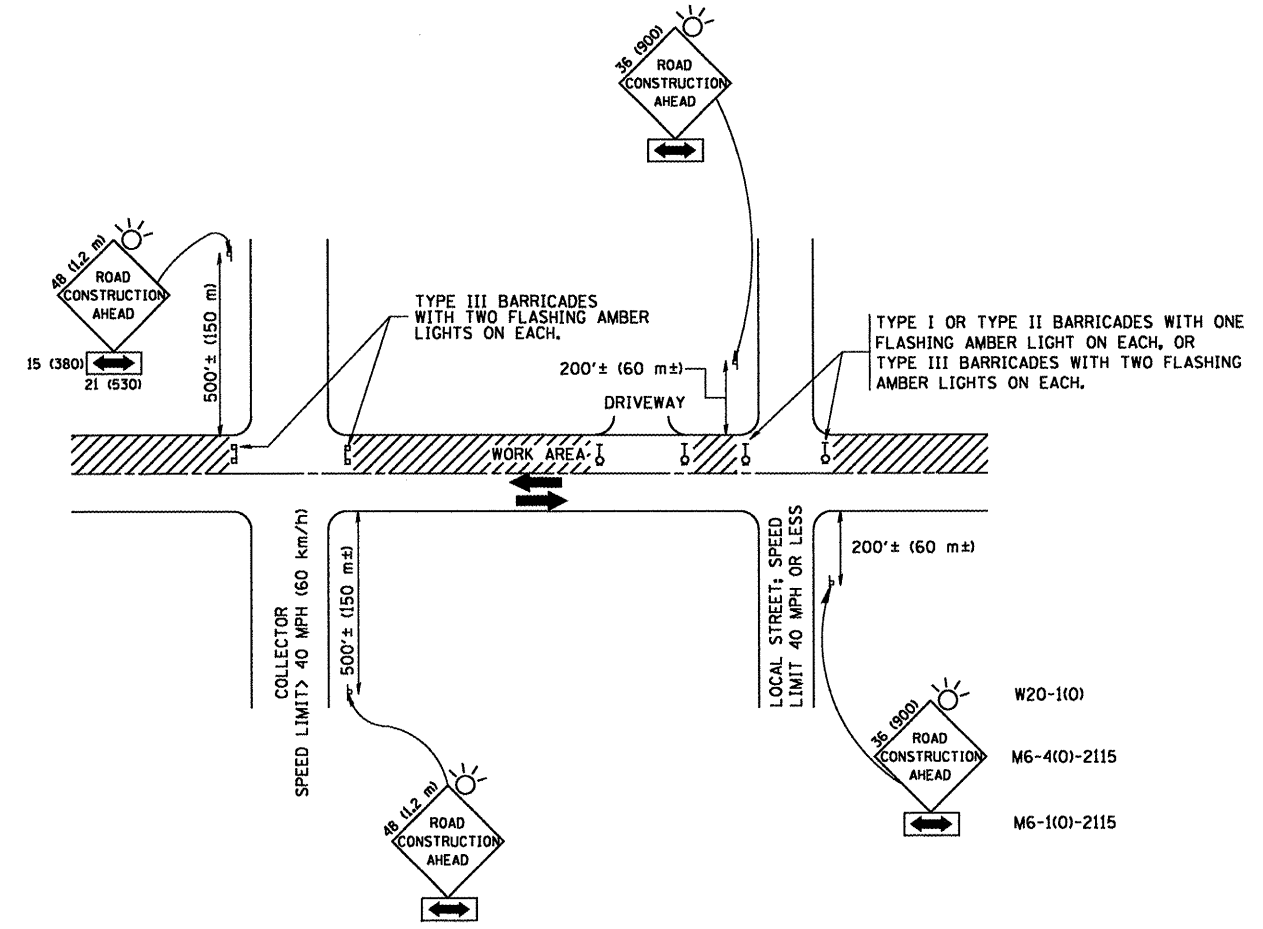
FILE NAME =	USER NAME = drivakoegn	DESIGNED - A. HOUSEH	REVISED - R. SHAH 10-03-96
c:\pw_work\pwr\dot\drivakoegn\d0108315\bd24.dgn		DRAWN -	REVISED - A. ABBAS 03-21-97
	PLOT SCALE = 50.000' / IN.	CHECKED -	REVISED - M. GOMEZ 01-22-01
	PLOT DATE = 12/15/2009	DATE - 03-11-94	REVISED - R. BORO 12-15-09

STATE OF ILLINOIS  
DEPARTMENT OF TRANSPORTATION

CURB OR CURB AND GUTTER  
REMOVAL AND REPLACEMENT

SCALE: NONE SHEET NO. 1 OF 1 SHEETS STA. TO STA.

F.A. RTE.	SECTION	COUNTY	TOTAL SHEETS	SHEET NO.
	2010-065-T	COOK	14	12
BD600-06 (BD-24)			CONTRACT NO. 60146	
FED. ROAD DIST. NO. 1 ILLINOIS FED. AID PROJECT				



TRAFFIC CONTROL AND PROTECTION FOR SIDE ROADS, INTERSECTIONS, AND DRIVEWAYS

NOTES:

- A. FOR NO LANE RESTRICTION ON THE SIDE ROAD OR DRIVEWAYS
    1. SIDE ROAD WITH A SPEED LIMIT OF 40 MPH (60 km/h) OR LESS AS SHOWN ON THE DRAWING AND AS DIRECTED BY THE ENGINEER:
      - a) ONE ROAD CONSTRUCTION AHEAD SIGN 36 x 36 (900x900) WITH A FLASHER AND FLAG MOUNTED ON IT APPROXIMATELY 200' (60 m) IN ADVANCE OF THE MAIN ROUTE.
      - b) THE CLOSED PORTION OF THE MAIN ROUTE SHALL BE PROTECTED BY BLOCKING WITH TYPE I, TYPE II OR TYPE III BARRICADES, 1/3 OF THE CROSS SECTION OF THE CLOSED PORTION.
    2. SIDE ROAD WITH A SPEED LIMIT GREATER THAN 40 MPH (60 km/h) AS SHOWN ON THE DRAWING AND AS DIRECTED BY THE ENGINEER:
      - a) ONE ROAD CONSTRUCTION AHEAD SIGN 48 x 48 (1.2 m x 1.2 m) WITH A FLASHER MOUNTED ON IT APPROXIMATELY 500' (150 m) IN ADVANCE OF THE MAIN ROUTE.
      - b) THE CLOSED PORTION OF THE MAIN ROUTE SHALL BE PROTECTED BY BLOCKING WITH TYPE III BARRICADES, 1/2 OF THE CROSS SECTION OF THE CLOSED PORTION.
  - 3. WHEN THE SIDE ROAD LIES BETWEEN THE BEGINNING OF THE MAINLINE SIGNING AND THE WORK ZONE, A SINGLE HEADED ARROW (M6-1) SHALL BE USED IN LIEU OF THE DOUBLE HEADED ARROW (M6-4).
- B. FOR A LANE CLOSURE ON A SIDE ROAD OR DRIVEWAY:
 

USE APPLICABLE PORTIONS OF THE TYPICAL APPLICATION OF TRAFFIC CONTROL DEVICES (STD. 701501, STD. 701606 OR THE APPROPRIATE STANDARD). THE SPACING OF SIGNS AND BARRICADES SHALL BE ADJUSTED FOR FIELD CONDITIONS AS DIRECTED BY THE ENGINEER. THE DIRECTIONAL ARROW SHALL BE COVERED OR REMOVED WHEN NO LONGER CONSISTENT WITH THE SIDE ROAD LANE CLOSURE.
  - C. ADVANCE WARNING SIGNS ARE TO BE OMITTED ON DRIVEWAY UNLESS OTHERWISE NOTED.
  - D. THE TRAFFIC CONTROL AND PROTECTION FOR SIDE ROADS, INTERSECTIONS, AND DRIVEWAYS SHALL BE INCIDENTAL TO THE COST OF SPECIFIED TRAFFIC CONTROL STANDARDS OR ITEMS.

All dimensions are in millimeters (inches) unless otherwise shown.

FILE NAME = W:\diststd\22x34\tbl0.dgn	USER NAME = ggliarobt	DESIGNED - LHA	REVISED - J. OBERLE 10-18-95
		DRAWN -	REVISED - A. HOUSEH 03-06-96
	PLOT SCALE = 50.000' / IN.	CHECKED -	REVISED - A. HOUSEH 10-15-96
	PLOT DATE = 1/4/2000	DATE - 06-89	REVISED - T. RAMMACHER 01-06-00

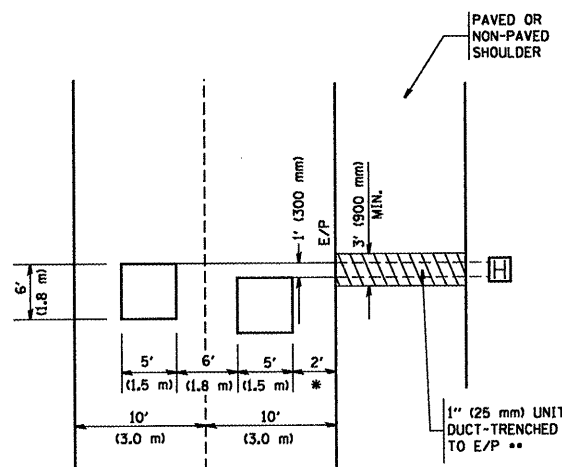
STATE OF ILLINOIS  
DEPARTMENT OF TRANSPORTATION

TRAFFIC CONTROL AND PROTECTION FOR SIDE ROADS, INTERSECTIONS, AND DRIVEWAYS			
SCALE: NONE	SHEET NO. 1 OF 1 SHEETS	STA.	TO STA.

F.A. RTE.	SECTION	COUNTY	TOTAL SHEETS	SHEET NO.
	2010-065-T	COOK	14	13
TC-10			CONTRACT NO. 60L46	
FED. ROAD DIST. NO. 1 ILLINOIS FED. AID PROJECT				

**LOOPS NEXT TO SHOULDERS**

PROVIDE A PAVEMENT REPLACEMENT  
NOTE WHICH SHOULD EQUAL  
3' (900 mm) X WIDTH OF  
PAVED SHOULDER.

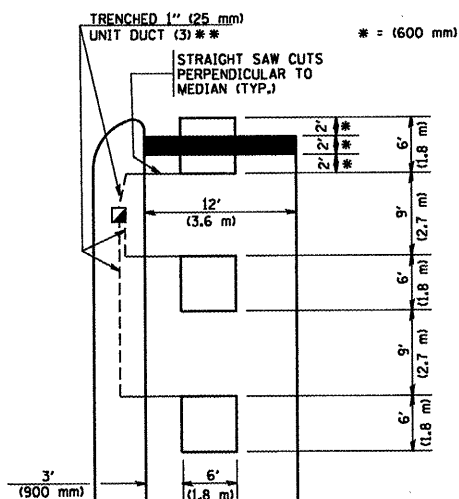


\* = (600 mm)

\*\* UNIT DUCT IS TO BE SHOWN ON PLAN SHEETS  
BUT SHALL NOT BE INCLUDED IN THE PAY ITEMS.

**LEFT TURN LANES WITH MEDIANS  
VOLUME DENSITY ("FAR OUT" DETECTION)  
ON SAME APPROACH  
(PROTECTED / PERMITTED LEFT TURN PHASING)**

HANDHOLE LOCATION MAY  
VARY DEPENDING ON GEOMETRICS  
AND DESIGN OF TRAFFIC SIGNALS.  
HEAVY-DUTY HANDHOLES TO BE  
USED WHEN THE MEDIAN IS  
MOUNTABLE. REFER TO STANDARD  
814001 TO ENSURE THAT HANDHOLE  
FITS IN MEDIAN.

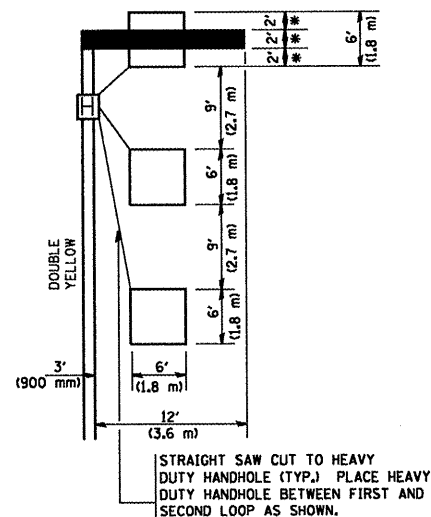


\*\* UNIT DUCT IS TO BE SHOWN ON PLAN SHEETS  
BUT SHALL NOT BE INCLUDED IN THE PAY ITEMS.

NOTE: DUAL LEFT TURNS NOT SHOWN REFER TO  
PLAN SHEET FOR DETECTOR LOOP REPLACEMENT

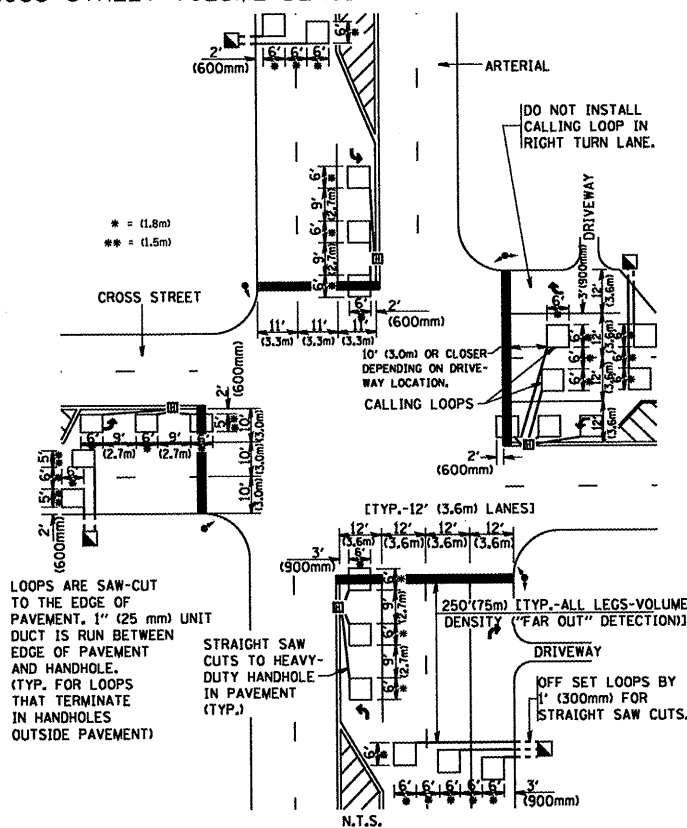
**LEFT TURN LANES WITHOUT MEDIANS  
VOLUME DENSITY ("FAR OUT" DETECTION)  
ON SAME APPROACH  
(PROTECTED / PERMITTED LEFT TURN PHASING)**

\* = (600 mm)



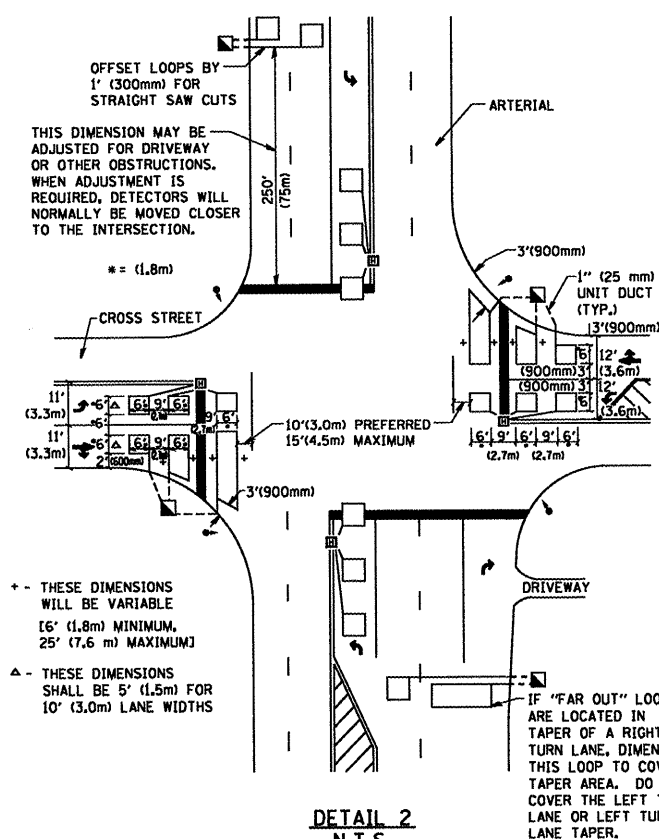
NOTE: DUAL LEFT TURNS NOT SHOWN REFER TO  
PLAN SHEET FOR DETECTOR LOOP REPLACEMENT

**ARTERIAL-VOLUME DENSITY ("FAR OUT" DETECTION)  
CROSS STREET-VOLUME DENSITY ("FAR OUT" DETECTION)**



**DETAIL 1  
N.T.S.**

**ARTERIAL-VOLUME DENSITY ("FAR OUT" DETECTION)  
CROSS STREET-NON VOLUME DENSITY ("UPTIGHT" PRESENCE DETECTION)**



**DETAIL 2  
N.T.S.**

**NOTES:**

**VEHICLES LOOP DETECTORS**

- \* ALL LEAD IN CABLE SHALL BE TWO CONDUCTOR NO. 14 TWISTED, SHIELDED.
- \* EACH DETECTOR LOOP SHALL HAVE ITS OWN SAW CUT FROM THE LOOP TO THE EDGE OF PAVEMENT OR TO A HANDHOLE IN THE PAVEMENT.
- \* EACH DETECTOR LOOP SHALL HAVE ITS OWN ONE INCH (25 mm) UNIT DUCT BETWEEN THE EDGE OF PAVEMENT AND THE FIRST HANDHOLE OR JUNCTION BOX. EACH UNIT DUCT RUN SHALL BE SHOWN ON THE PLANS BY THE DESIGNER, BUT SHALL NOT BE PAID FOR SEPARATELY. THIS ITEM IS INCIDENTAL TO THE PAY ITEM FOR DETECTOR LOOPS.
- \* ONE DIMENSION OF ALL DETECTOR LOOPS SHALL BE SIX FEET (1.8 m)
- \* EACH LANE OF NON-LOCKING, PRESENCE DETECTION AND EACH LANE OF A DOUBLE LEFT TURN LANE REQUIRES A SEPARATE INDUCTIVE LOOP DETECTOR AND LEAD IN CABLE.
- \* WHEN NON-LOCKING, PRESENCE DETECTION IS USED, MORE THAN ONE LOOP PER LANE IS REQUIRED BEHIND THE STOP BAR (i.e. 1-1/2, 1-3/4, 2).
- \* WHEN SYSTEM LOOPS ARE REQUIRED ON AN APPROACH OF AN INTERSECTION, THE LOOPS USED FOR VOLUME DENSITY AND INTERSECTION TIMING SHALL ALSO BE USED AS SYSTEM DETECTORS. EACH ONE OF THESE TYPE OF LOOPS REQUIRES A SEPARATE TWO CONDUCTOR NO. 14 TWISTED SHIELDED CABLE AND A SEPARATE INDUCTIVE LOOP DETECTOR WHEN NEW CONTROLLERS ARE UTILIZED. THE DESIGNER SHALL LABEL THESE TYPES OF LOOPS AS "INTERSECTION AND SAMPLING (SYSTEM) DETECTORS" ON THE SIGNAL LAYOUT, THE INTERCONNECT PLAN AND THE SYSTEM CABLE PLAN. WHEN AN EXISTING CONTROLLER IS UTILIZED FOR THIS TYPE OF DETECTION, THE PAY ITEM "INDUCTIVE LOOP DETECTOR WITH SYSTEM OUTPUT" SHOULD BE USED.

**PLACEMENT OF DETECTORS**

THE FOLLOWING FIGURES REPRESENT THE MOST COMMON DETECTOR LOOP LOCATIONS AND SIZES. ADJUSTMENTS WILL BE NECESSARY FOR SPECIFIC GEOMETRIC CONSIDERATIONS.

LOCATIONS AND DEMENSIONS OF DETECTOR LOOPS ARE REQUIRED ON ALL SIGNAL LAYOUT PLAN SHEETS.

"FAR OUT" DETECTION REFERS TO LOCKING, PRESENCE TYPE DETECTION LOCATED IN THRU LANES, RIGHT TURN LANES, AND RIGHT TURN LANE TAPER AREAS (IF APPLICABLE), USUALLY 250' (75 m) IN ADVANCE OF STOP BARS. "UPTIGHT" DETECTION REFERS TO NON-LOCKING PRESENCE TYPE DETECTION LOCATED IN ALL LANES AND 10'-15' (3.0 m-4.5 m) BEHIND THE CROSSING STREET'S EDGE OF PAVEMENT EXTENDED.

**NOTE:**

ALL DETAILS AND NOTES SHOWN ARE FROM THE I.D.O.T. DISTRICT 1 TRAFFIC SIGNAL DESIGN GUIDELINES DATED JANUARY 1995

THIS DRAWING HAS BEEN PREPARED TO ASSIST THE RESIDENT ENGINEER FOR ALL ROADWAY RESURFACING OR S.M.A.R.T. PROJECTS WHERE THE DIMENSIONS ARE NOT SHOWN ON THE PLANS AND THE FINAL LOCATIONS FOR CROSSWALKS OR STOP BARS ARE NOT DETERMINED.

FILE NAME =	USER NAME = geglano
W:\dststd\22x34\ts07.dgn	
PLOT SCALE = 5/8" = 1' IN.	PLOT DATE = 1/4/2008

DESIGNED -	REVISED -
DRAWN -	REVISED -
CHECKED - R.K.F.	REVISED -
DATE -	REVISED -

**STATE OF ILLINOIS  
DEPARTMENT OF TRANSPORTATION**

<b>DISTRICT 1 - DETECTOR LOOP INSTALLATION</b>			
<b>DETAILS FOR ROADWAY RESURFACING</b>			
SCALE: NONE	SHEET NO. 1 OF 1 SHEETS	STA. TO STA.	

F.A. RTE.	SECTION	COUNTY	TOTAL SHEETS	SHEET NO.
	2010-065-T	Cook	14	14
TS-07			CONTRACT NO.	
FED. ROAD DIST. NO. 1 ILLINOIS FED. AID PROJECT				