

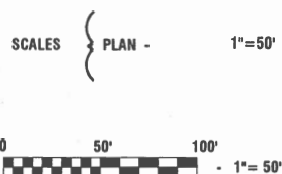
02-27-2026 LETTING ITEM 072

STATE OF ILLINOIS
DEPARTMENT OF TRANSPORTATION

PLANS FOR PROPOSED FEDERAL AID PROJECT

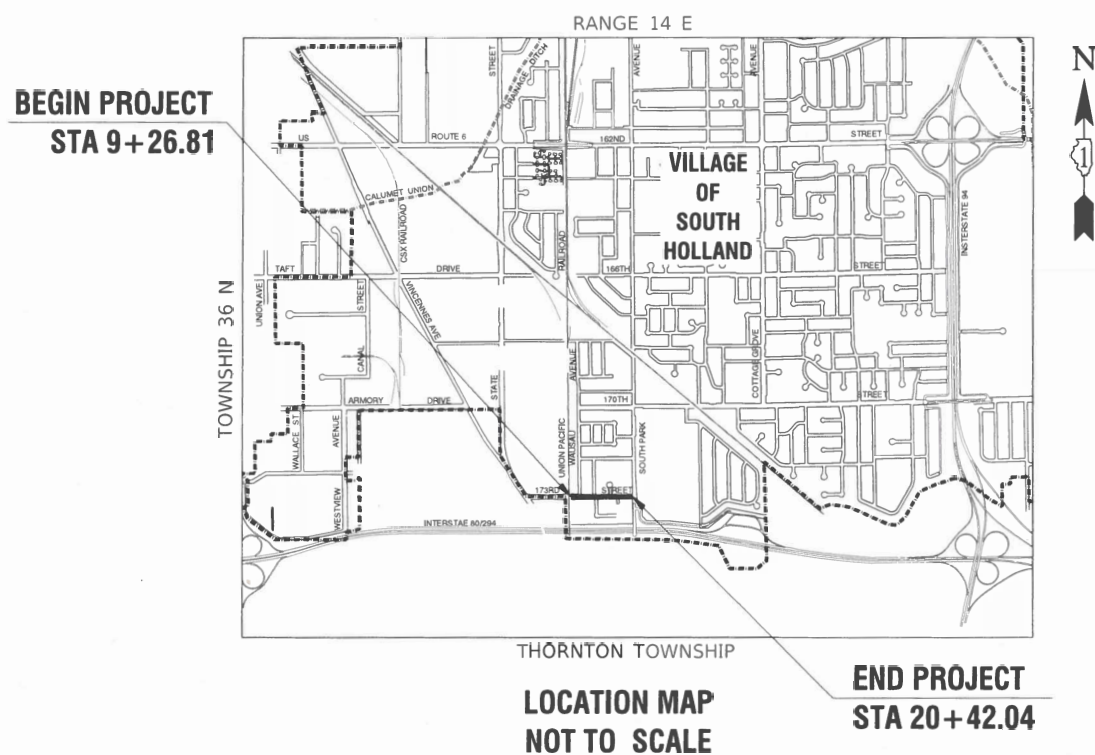
**FAU ROUTE 1011 (173RD STREET)
WAUSAU AVENUE TO SOUTH PARK AVENUE
ROADWAY RESURFACING
SECTION NO.: 22-00116-00-RS
PROJECT NO.: 204J(991)
VILLAGE *of* SOUTH HOLLAND
COOK COUNTY
JOB NO.: C-91-045-25**

<u>173RD STREET</u>	
<u>WAUSAU AVENUE TO SOUTH PARK AVENUE</u>	
2022 ADT-	2,250
POSTED SPEED LIMIT-	25 MPH
FUNCTIONAL CLASSIFICATION-	MINOR COLLECTOR

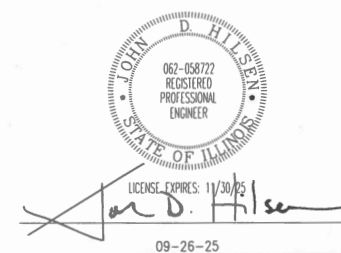


FULL SIZE PLANS HAVE BEEN PREPARED USING STANDARD
ENGINEERING SCALES, REDUCED SIZED PLANS WILL NOT
CONFORM TO STANDARD SCALES, IN MAKING MEASUREMENTS
ON REDUCED PLANS, THE ABOVE SCALES MAY BE USED.

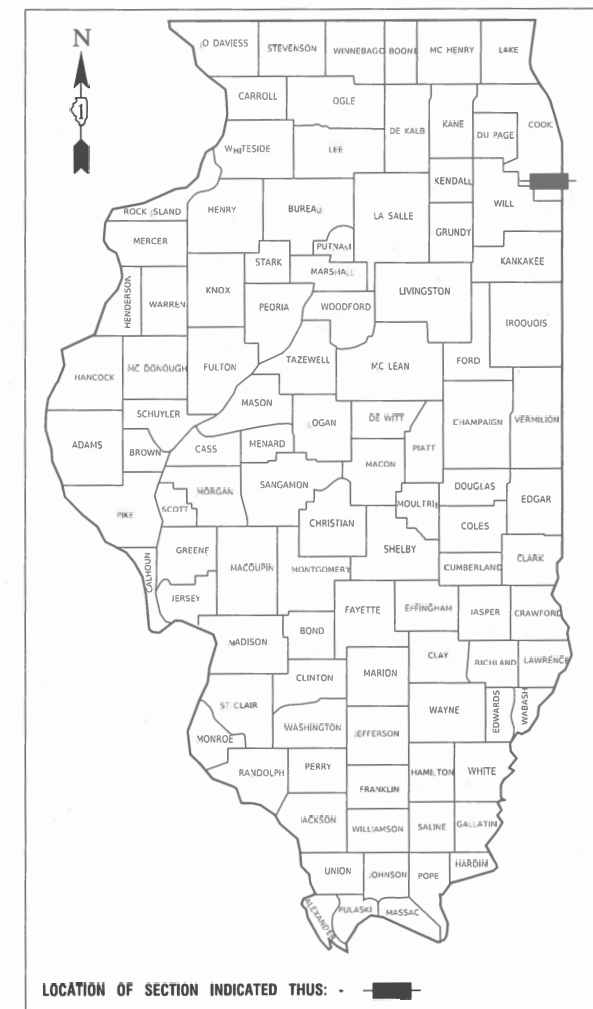
J. U. L. I. E.
JOINT UTILITY LOCATION INFORMATION FOR EXCAVATION
1 - 800 - 892 - 0123
OR 811



GROSS LENGTH= 1,115.23 FEET= 0.21 MILES
NET LENGTH= 1,115.23 FEET= 0.21 MILES



F.A.U. RTE.	SECTION	COUNTY	TOTAL SHEETS	SHEET NO
1011	22-00116-00-R5	COOK	15	1
ILLINOIS		CONTRACT NO. 61M05		



STATE OF ILLINOIS DEPARTMENT OF TRANSPORTATION

APPROVED 9/24/2025
[Signature]
VILLAGE OF SOUTH HOLLAND, MAYOR

PASSED OCTOBER 31, 2025
[Signature]
DISTRICT 1 ENGINEER OF LOCAL ROADS & STREETS

RELEASING FOR BID
BASED ON LIMITED
REVIEW

NOVEMBER 3, 2025
[Signature]
REGIONAL ENGINEER

PRINTED BY THE AUTHORITY OF
THE STATE OF ILLINOIS

INDEX OF SHEETS

1	COVER SHEET
2	INDEX OF SHEETS, HIGHWAY STANDARDS AND GENERAL NOTES
3-5	SUMMARY OF QUANTITIES
6	TYPICAL CROSS SECTIONS
7	ALIGNMENT, TIES AND BENCHMARKS
8	PROPOSED IMPROVEMENT PLAN
9	PAVEMENT MARKING AND SIGNAGE
10	CONSTRUCTION DETAILS
11-15	IDOT DISTRICT 1 STANDARDS

HIGHWAY STANDARDS

000001-09	STANDARD SYMBOLS, ABBREVIATIONS AND PATTERNS
424001-12	PERPENDICULAR CURB RAMPS FOR SIDEWALKS
424016-06	MID-BLOCK CURB RAMPS FOR SIDEWALKS
606001-09	CONCRETE CURB TYPE B AND COMBINATION CONCRETE CURB AND GUTTER
701001-02	OFF-RD OPERATIONS, 2L, 2W, MORE THAN 15' (4.5m) AWAY
701006-05	OFF-RD OPERATIONS, 2L, 2W, 15' (4.5m) TO 24" (600m) FROM PAVEMENT EDGE
701011-04	OFF-RD MOVING OPERATIONS, 2L, 2W, DAY ONLY
701301-04	LANE CLOSURE, 2L, 2W, SHORT TIME OPERATIONS
701311-03	LANE CLOSURE, 2L, 2W, MOVING OPERATIONS - DAY ONLY
701501-06	URBAN LANE CLOSURE, 2L, 2W, UNDIVIDED
701701-10	URBAN LANE CLOSURE, MULTILANE INTERSECTION
701801-06	SIDEWALK, CORNER OR CROSSWALK CLOSURE
701901-11	TRAFFIC CONTROL DEVICES
720001-01	SIGN PANEL MOUNTING DETAILS
720006-04	SIGN PANEL ERECTION DETAILS
720011-01	METAL POSTS FOR SIGNS, MARKERS & DELINEATORS
729001-01	APPLICATIONS OF TYPES A & B METAL POSTS (FOR SIGNS & MARKERS)
780001-05	TYPICAL PAVEMENT MARKINGS

DISTRICT ONE DETAILS

BD-32	BUTT JOINTS AND HMA TAPER
TC-10	TRAFFIC CONTROL AND PROTECTION FOR SIDE ROADS, INTERSECTIONS AND DRIVEWAYS
TC-13	DISTRICT ONE TYPICAL PAVEMENT MARKINGS
TC-16	SHORT TERM PAVEMENT MARKING LETTERS AND SYMBOLS
TC-26	DRIVEWAY ENTRANCE SIGNING

GENERAL NOTES

- ITEMS OF WORK LISTED IN THE SUMMARY OF QUANTITIES NOT SPECIFICALLY CALLED OUT ON THE PLANS SHALL BE PERFORMED AS DIRECTED BY THE ENGINEER.
- THE ROBINSON ENGINEERING, LTD. FIELD OFFICE (708-331-6700), AND THE PUBLIC WORKS DIRECTOR, AT THE VILLAGE OF SOUTH HOLLAND (708-339-2323), SHALL BE NOTIFIED THREE (3) WORKING DAYS BEFORE CONSTRUCTION BEGINS.
- BEFORE STARTING ANY EXCAVATION THE CONTRACTOR SHALL CALL "J.U.L.I.E." AT (800) 892-0123 OR 811 AND (312) 744-7000 FOR FIELD LOCATIONS OF BURIED ELECTRIC, TELEPHONE AND GAS UTILITIES. (48 HOUR NOTIFICATION REQUIRED)
- UTILITIES INDICATED ON THE PLANS ARE PROVIDED FOR THE CONTRACTOR'S USE AND ARE BASED UPON INFORMATION AVAILABLE AT THE TIME OF THE ADVERTISEMENT FOR BIDS. THE OWNER AND ENGINEER DO NOT GUARANTEE THE ACCURACY OF UTILITY INFORMATION.
- IT SHALL BE THE CONTRACTOR'S RESPONSIBILITY TO VERIFY ALL DIMENSIONS AND CONDITIONS EXISTING IN THE FIELD PRIOR TO CONSTRUCTION AND ORDERING OF MATERIALS.
- THE THICKNESS OF HMA MIXTURE STATED IN THE SPECIFICATIONS IS THE NOMINAL THICKNESS. DEVIATIONS FROM THE NOMINAL THICKNESS WILL BE PERMITTED WHEN SUCH DEVIATIONS OCCUR DUE TO IRREGULARITIES IN THE EXISTING SURFACE OR BASE ON WHICH THE HMA SURFACE IS PLACED.
- ANY LOOSE MATERIAL DEPOSITED IN THE FLOW LINE OF DITCHES, GUTTERS OR OTHER DRAINAGE STRUCTURES SHALL BE REMOVED BY THE END OF EACH DAY BY THE CONTRACTOR.
- CONTRACTOR SHALL TAKE PRECAUTION BY PRESERVING EXISTING TREES WITHIN THE RIGHT OF WAY. IF ANY DAMAGE OCCURS, TREES SHALL BE REPLACED IN KIND PER ARTICLE 201.07 REPAIR OR REPLACEMENT OF EXISTING PLANT MATERIAL REQUIREMENTS STATED HEREIN.
- ALL EQUIPMENT SHALL BE REMOVED OFF THE VILLAGE STREETS DURING ALL HOLIDAY WEEKENDS AS COORDINATED WITH THE VILLAGE.
- NO PAVEMENT PATCHING SHALL BE PERMITTED AFTER FRIDAY AT 3:00 PM OF EACH AND EVERY WEEK AND NO HOLES WILL BE ALLOWED TO REMAIN OPEN OVERNIGHT OR OVER THE WEEKEND.
- HMA PAVING SHALL BE PERFORMED WITH HOT JOINTS.
- THE CONTRACTOR SHALL CONTACT KALPANA KANNAN-HOSADURGA, THE DISTRICT ONE TRAFFIC CONTROL SUPERVISOR, AT KALPANA.KANNAN-HOSADURGA@ILLINOIS.GOV A MINIMUM OF 72 HOURS IN ADVANCE OF BEGINNING WORK.
- WHEN WORKING ADJACENT TO THE ROAD AND UTILIZING DAILY LANE CLOSURES, DROP-OFFS ADJACENT TO THE TRAVEL LANES SHALL BE KEPT TO A MINIMUM. DROP-OFFS GREATER THAN (OR GREATER THAN OR EQUAL TO) 12" WILL NOT BE ALLOWED AT LOCATIONS WHERE THE DROP-OFF IS LOCATED WITHIN 8 FT OF THE EDGE OF THE TRAVEL LANE. THE CONTRACTOR WILL BE REQUIRED TO PERFORM THE EXCAVATION REQUIRED FOR THE CONSTRUCTION DURING THE TIME THAT THE ADJACENT LANE IS CLOSED. AS NOTED ABOVE, PRIOR TO REOPENING THE LANE TO TRAFFIC THE CONTRACTOR SHALL PLACE SUFFICIENT MATERIAL TO REDUCE THE DROP-OFF TO LESS THAN 12". THE CONTRACTOR SHALL BE RESPONSIBLE TO DETERMINE THE AMOUNT OF WORK THAT CAN BE COMPLETED WITHIN THE TIME OF THE DAILY LANE CLOSURE.
- CHANGEABLE MESSAGE SIGNS SHALL BE INSTALLED TWO WEEKS PRIOR TO THE START OF CONSTRUCTION ON EACH APPROACH OF THE EFFECTED ROADWAY TO WARN MOTORISTS OF THE UPCOMING EVENT. THE SIGN MESSAGES SHALL BE REVISED TWO WEEKS THEREAFTER WITH MESSAGES WARNING TRAFFIC OF POTENTIAL TRAFFIC DELAYS, QUEUING AND/OR WITH MESSAGES NOTIFYING TRAFFIC TO USE ALTERNATE ROUTES. THE SIGN LOCATIONS AND MESSAGES SHALL BE DETERMINED BY THE ENGINEER.
- TEMPORARY INFORMATION SIGNS ON TEMPORARY SUPPORTS SHALL BE PROVIDED FOR ALL COMMERCIAL DRIVEWAYS THAT ARE LOCATED WITHIN A WORK AREA. THIS WORK SHALL BE PAID FOR PER DISTRICT 1 DETAIL TC-26. THESE SIGNS SHALL BE RELOCATED AS REQUIRED FOR EACH CONSTRUCTION STAGE AND SHALL BE PLACED AS DIRECTED BY THE ENGINEER.
- CONTRACTOR SHALL REMOVE OR COVER ALL W21-1 (WORKERS PRESENT) AND W20-7 (FLAGGER) SIGNS WHEN WORKERS ARE NOT PRESENT OR IF THE SIGN IS NOT APPLICABLE
- DRUMS ALONG ARTERIAL ROADWAYS SHALL BE PLACED AS FOLLOWS: 50' C-C ALONG TANGENTS; 20' C-C ALONG TAPERS; & 10' C-C ALONG RADII/CURVES
- CONTRACTOR IS TO MAINTAIN FULL ACCESS TO AT LEAST ONE SIDE OF THE SIDEWALK AT ALL TIMES. CROSSWALKS ARE TO BE MAINTAINED THROUGH THE USE OF EXISTING OR TEMPORARY PAVEMENT MARKINGS AND TEMPORARY SIDEWALK, AS REQUIRED.
- AGGREGATE SUBGRADE IMPROVEMENT (CU YD) HAS BEEN PROVIDED FOR USE AT THE LOCATIONS INDICATED FOR SOILS THAT TEND TO BE UNSTABLE AND/OR UNSUITABLE. THE ACTUAL NEED FOR REMOVAL AND REPLACEMENT WITH ABOVE ITEM WILL BE DETERMINED IN THE FIELD AT THE TIME OF CONSTRUCTION BY THE GEOTECHNICAL ENGINEER. ALL POTENTIALLY UNSTABLE SOILS SHOULD BE TESTED WITH A STATIC OR DYNAMIC CONE PENETROMETER AND TREATED IN ACCORDANCE WITH ARTICLE 301.04 OF THE STANDARD SPECIFICATIONS AND IDOT SUBGRADE STABILITY MANUAL. IF UNSTABLE AND/OR UNSUITABLE SOILS ARE NOT ENCOUNTERED, THEN THE QUANTITY SHALL BE DEDUCTED.
- THE SUBGRADE STABILITY SHALL BE VERIFIED BY PROOF ROLLING WITH A FULLY LOADED TANDEM-AXLE TRUCK.
- ANY AGGREGATE SUBGRADE CONTAMINATED AND/OR DAMAGED BY THE CONTRACTOR'S VEHICLES AND/OR EQUIPMENT IS TO BE REMOVED AND REPLACED AS DIRECTED BY THE ENGINEER.

COMMITTMENTS

NONE.

FILE NAME = 23R0706-INDX-01 - P02	USER NAME =	DESIGNED — AEL	REVISED —	STATE OF ILLINOIS DEPARTMENT OF TRANSPORTATION	173RD STREET ROADWAY RESURFACING INDEX OF SHEETS, STATE STANDARDS AND GENERAL NOTES			F.A.U RTE.	SECTION	COUNTY	TOTAL SHEETS	SHEET NO.
		CHECKED — JDH	REVISED —					1011	22-00116-00-RS	COOK	15	2
	PLOT SCALE =	DRAWN — BG	REVISED —					CONTRACT NO. 61M05				
	PLOT DATE = 10-29-25	CHECKED — AG	REVISED —		SCALE: NONE	SHEET NO. 2	OF 15 SHEETS	STA.	TO STA.	FED. ROAD DIST. NO. 1	ILLINOIS	FED. AID PROJECT 204J(091)

				FED 80%	FED 80%
				VILLAGE 20%	VILLAGE 20%
				ROADWAY	SAFETY
CODE NO.	PAY ITEM	UNIT	TOTAL QUANTITY	CONSTRUCTION TYPE CODE	
				0005	0021
20101100	TREE TRUNK PROTECTION	EACH	4	4	
20101200	TREE ROOT PRUNING	EACH	4	4	
20200100	EARTH EXCAVATION	CU YD	3	3	
20201200	REMOVAL AND DISPOSAL OF UNSUITABLE MATERIAL	CU YD	50	50	
21101615	TOPSOIL FURNISH AND PLACE, 4"	SQ YD	205	205	
25200110	SODDING, SALT TOLERANT	SQ YD	205	205	
25200200	SUPPLEMENTAL WATERING	UNIT	11	11	
28000510	INLET FILTERS	EACH	4	4	
30300001	AGGREGATE SUBGRADE IMPROVEMENT	CU YD	50	50	
35101600	AGGREGATE BASE COURSE, TYPE B 4"	SQ YD	365		365
35800100	PREPARATION OF BASE	SQ YD	5,025	5025	
35800200	AGGREGATE BASE REPAIR	TON	200	200	
40600275	BITUMINOUS MATERIALS (PRIME COAT)	POUND	11,310	11310	
40600290	BITUMINOUS MATERIALS (TACK COAT)	POUND	1,130	1130	
40600370	LONGITUDINAL JOINT SEALANT	FOOT	1,965	1965	
40600982	HOT-MIX ASPHALT SURFACE REMOVAL - BUTT JOINT	SQ YD	115	115	
40603080	HOT-MIX ASPHALT BINDER COURSE, IL-19.0, N50	TON	635	635	

* SPECIALTY ITEM

FILE NAME = 23R0706-QUAN-02 - Q01	USER NAME =	DESIGNED -- AEL	REVISED --	STATE OF ILLINOIS DEPARTMENT OF TRANSPORTATION	173RD STREET ROADWAY RESURFACING SUMMARY OF QUANTITIES			F.A.U. RTE.	SECTION	COUNTY	TOTAL SHEETS	SHEET NO.
		CHECKED -- JDH	REVISED --					1011	22-00116-00-RS	COOK	15	3
	PLOT SCALE =	DRAWN -- RG	REVISED --					CONTRACT NO. 61M05				
	PLOT DATE = 10-29-25	CHECKED -- AG	REVISED --					FED. ROAD DIST. NO. 1 ILLINOIS FED. AID PROJECT 204J(001)				
						SCALE: NONE	SHEET NO. 3	OF 15 SHEETS	STA.	TO STA.		

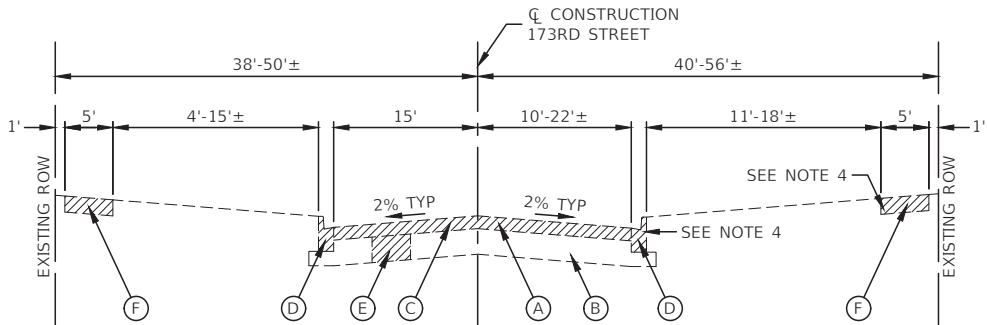
				FED 80%	FED 80%
				VILLAGE 20%	VILLAGE 20%
				ROADWAY	SAFETY
CODE NO.	PAY ITEM	UNIT	TOTAL QUANTITY	CONSTRUCTION TYPE CODE	
				0005	0021
40604060	HOT-MIX ASPHALT SURFACE COURSE, IL-9.5, MIX "D", N50	TON	565	565	
42300300	PORTLAND CEMENT CONCRETE DRIVEWAY PAVEMENT, 7 INCH	SQ YD	96	96	
42400200	PORTLAND CEMENT CONCRETE SIDEWALK 5 INCH	SQ FT	1,570		1,570
42400400	PORTLAND CEMENT CONCRETE SIDEWALK 7 INCH	SQ FT	75		75
42400800	DETECTABLE WARNINGS	SQ FT	140		140
44000165	HOT-MIX ASPHALT SURFACE REMOVAL, 4"	SQ YD	5,025	5,025	
44000200	DRIVEWAY PAVEMENT REMOVAL	SQ YD	230	230	
44000500	COMBINATION CURB AND GUTTER REMOVAL	FOOT	645	645	
44000600	SIDEWALK REMOVAL	SQ FT	1,935		1,935
60266600	VALVE BOXES TO BE ADJUSTED	EACH	1	1	
60608562	COMBINATION CONCRETE CURB AND GUTTER, TYPE M-4.12	FOOT	875	875	
67100100	MOBILIZATION	LSUM	1	1	
70102620	TRAFFIC CONTROL AND PROTECTION, STANDARD 701501	LSUM	1	1	
70102635	TRAFFIC CONTROL AND PROTECTION, STANDARD 701701	LSUM	1	1	
70102640	TRAFFIC CONTROL AND PROTECTION, STANDARD 701801	LSUM	1	1	
70107025	CHANGEABLE MESSAGE SIGN	CAL DA	120		120
70300100	SHORT TERM PAVEMENT MARKING	FOOT	116		116

* SPECIALTY ITEM

FILE NAME = 23R0706-QUAN-02 - Q02	USER NAME =	DESIGNED -- AEL	REVISED --	STATE OF ILLINOIS DEPARTMENT OF TRANSPORTATION	173RD STREET ROADWAY RESURFACING SUMMARY OF QUANTITIES			FAU RTE	SECTION	COUNTY	TOTAL SHEETS	SHEET NO.
		CHECKED -- JOH	REVISED --					1011	22-001118-00-RS	COOK	15	4
	PLOT SCALE =	DRAWN -- RG	REVISED --					CONTRACT NO. 61M05				
	PLOT DATE = 10-29-25	CHECKED -- AG	REVISED --					FED. ROAD DIST. NO. 1 ILLINOIS FED. AID PROJECT 204J(991)				
						SCALE: NONE	SHEET NO. 4	OF 15 SHEETS	STA.	TO STA.		

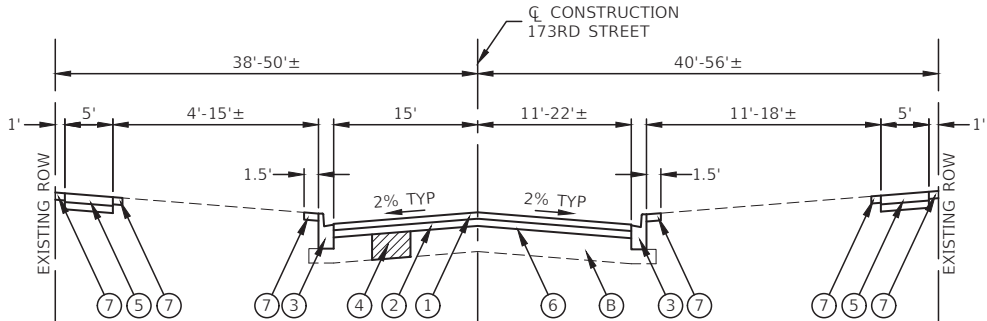
				FED 80%	FED 80%
				VILLAGE 20%	VILLAGE 20%
				ROADWAY	SAFETY
CODE NO.	PAY ITEM	UNIT	TOTAL QUANTITY	CONSTRUCTION TYPE CODE	
				0005	0021
70300150	SHORT TERM PAVEMENT MARKING REMOVAL	SQ FT	40		40
* 72000100	SIGN PANEL - TYPE 1	SQ FT	51		51
72400500	RELOCATE SIGN PANEL ASSEMBLY - TYPE A	EACH	1		1
* 72900100	METAL POST - TYPE A	FOOT	62		62
* 78000100	THERMOPLASTIC PAVEMENT MARKING - LETTERS AND SYMBOLS	SQ FT	73		73
* 78000200	THERMOPLASTIC PAVEMENT MARKING - LINE 4"	FOOT	2,105		2,105
* 78000400	THERMOPLASTIC PAVEMENT MARKING - LINE 6"	FOOT	425		425
* 78000600	THERMOPLASTIC PAVEMENT MARKING - LINE 12"	FOOT	96		96
* 78000650	THERMOPLASTIC PAVEMENT MARKING - LINE 24"	FOOT	35		35
K1004595	PRUNING FOR SAFETY AND EQUIPMENT CLEARANCE	L SUM	1		1
X4021000	TEMPORARY ACCESS (PRIVATE ENTRANCE)	EACH	6	6	
X4060282	HOT-MIX ASPHALT DRIVEWAY PAVEMENT, 4"	SQ YD	95	95	
X7200061	TEMPORARY INFORMATION SIGNING	SQ FT	7		7
Z0017400	DRAINAGE & UTILITY STRUCTURES TO BE ADJUSTED	EACH	6	6	
Z0017700	DRAINAGE & UTILITY STRUCTURES TO BE RECONSTRUCTED	EACH	1	1	

* SPECIALTY ITEM



EXISTING TYPICAL SECTION


173RD STREET
STA 9+26.81 TO STA 20+42.04



PROPOSED TYPICAL SECTION

173RD STREET
STA 9+26.81 TO STA 20+42.04

EXISTING LEGEND

- (A) EXISTING PAVEMENT, 3" TO 4"±
- (B) EXISTING SUBBASE, 7" TO 8"±
- (C) HOT-MIX ASPHALT SURFACE REMOVAL, 4" (SEE NOTE 1)
- (D) EXISTING CURB AND GUTTER, TYPE M-4.12
- (E) REMOVAL AND DISPOSAL OF UNSUITABLE MATERIAL (AS DIRECTED BY ENGINEER)
- (F) EXISTING SIDEWALK
-  ITEM TO BE REMOVED (AS DIRECTED BY ENGINEER)

NOTE:

1. ALL EXISTING HMA PAVEMENT TO BE REMOVED ON 173RD STREET. PAID AS HOT-MIX ASPHALT SURFACE REMOVAL, 4".
2. LONGITUDINAL JOINT SEALANT SHALL BE PLACED ON THE HOT-MIX ASPHALT BINDER COURSE, IL-19.0, N50.
3. SEE PAVEMENT MARKING PLANS FOR LEFT AND RIGHT TURN LANE CONFIGURATION AT EAST PROJECT LIMIT.
4. NO CURB OR SIDEWALK ALONG SOUTH SIDE OF 173RD STREET WEST OF STA 11+95 OR EAST OF STA 18+12

PROPOSED LEGEND

- ① HOT-MIX ASPHALT SURFACE COURSE, MIX "D", N50, 2"
- ② HOT-MIX ASPHALT BINDER COURSE, IL-19.0, N50, 2 1/4"
- ③ COMBINATION CONCRETE CURB AND GUTTER, TYPE M-4.12 (AS DIRECTED BY ENGINEER)
- ④ AGGREGATE SUBGRADE IMPROVEMENT (CY) (AS DIRECTED BY ENGINEER)
- ⑤ PORTLAND CEMENT CONCRETE SIDEWALK, 5 INCH OR 7 INCH AT DRIVEWAYS ON AGGREGATE BASE COURSE, TYPE B, 4" (AS DIRECTED BY ENGINEER)
- ⑥ PREPARATION OF BASE AND AGGREGATE BASE REPAIR
- ⑦ TOPSOIL FURNISH AND PLACE, 4" SODDING, SALT TOLERANT

HOT-MIX ASPHALT MIXTURE REQUIREMENTS		
MIXTURE TYPE	AIR VOIDS @ Ndes	QMP
ROADWAY RESURFACING		
HOT-MIX ASPHALT SURFACE COURSE, 1L-9.5, MIX "D", N50, 2"	4% @ 50 Gyr.	LR 1030-2
HOT-MIX ASPHALT BINDER COURSE, 1L-19.0, N50, 2 1/4"	4% @ 50 Gyr.	LR 1030-2
HMA DRIVEWAY PAVEMENT, 4"		
HOT-MIX ASPHALT SURFACE COURSE, 1L-9.5, MIX "D", N50, 1 1/2"	4% @ 50 Gyr.	LR 1030-2
HOT-MIX ASPHALT BINDER COURSE, 1L-19.0, N50, 2 1/2"	4% @ 50 Gyr.	LR 1030-2
QMP DESIGNATION: QUALITY CONTROL/QUALITY ASSURANCE (QC/QA) PER LR1030-2		

NOTES:

1. THE UNIT WEIGHT USED TO CALCULATE ALL HMA SURFACE MIXTURE IS 112 LBS/SQ YD/IN.
2. THE "AC TYPE" FOR POLYMERIZED HMA MIXES SHALL BE "SBS/SBR PG 76-22" AND FOR NON-POLYMERIZED HMA THE "AC TYPE" SHALL BE "PG-64-22" UNLESS MODIFIED BY RECLAIMED MATERIALS SPECIFICATIONS.

FILE NAME = 23R0706-TYPX-01 - P01

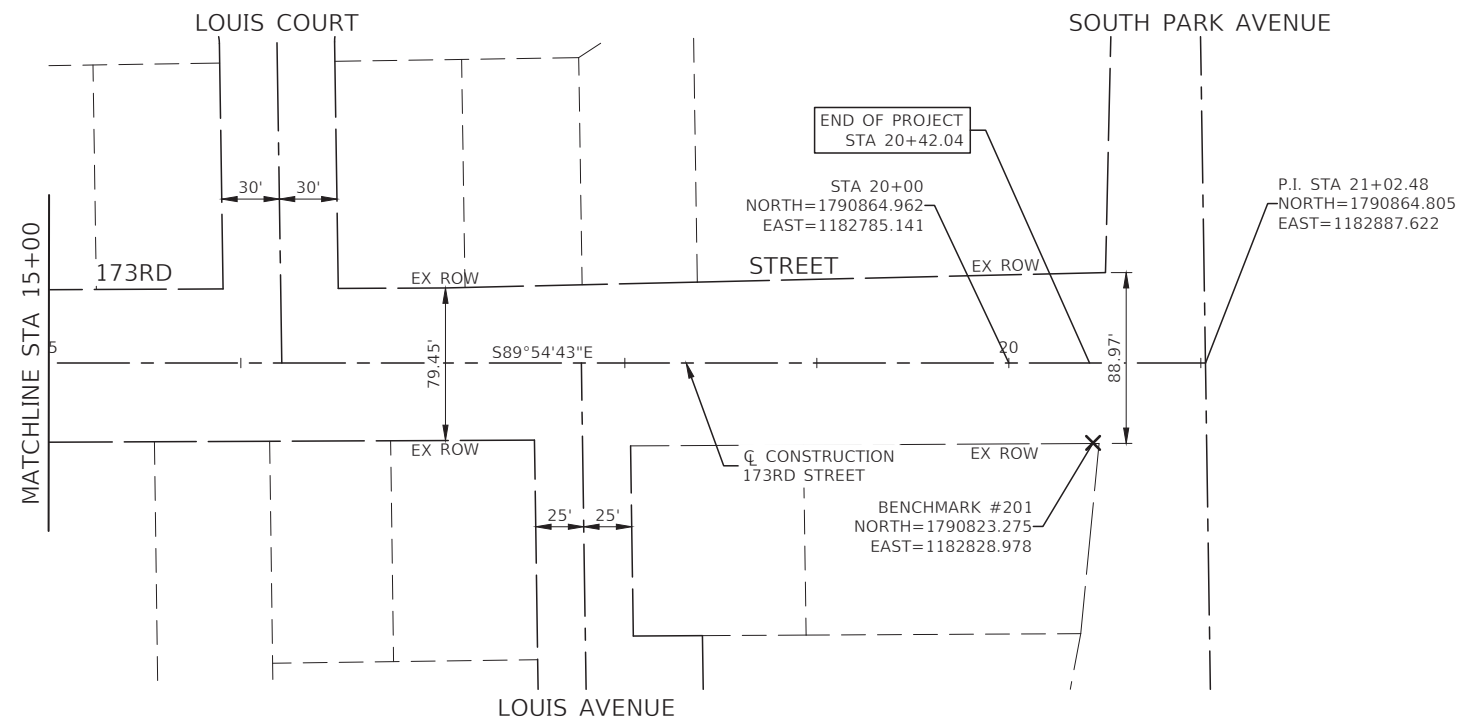
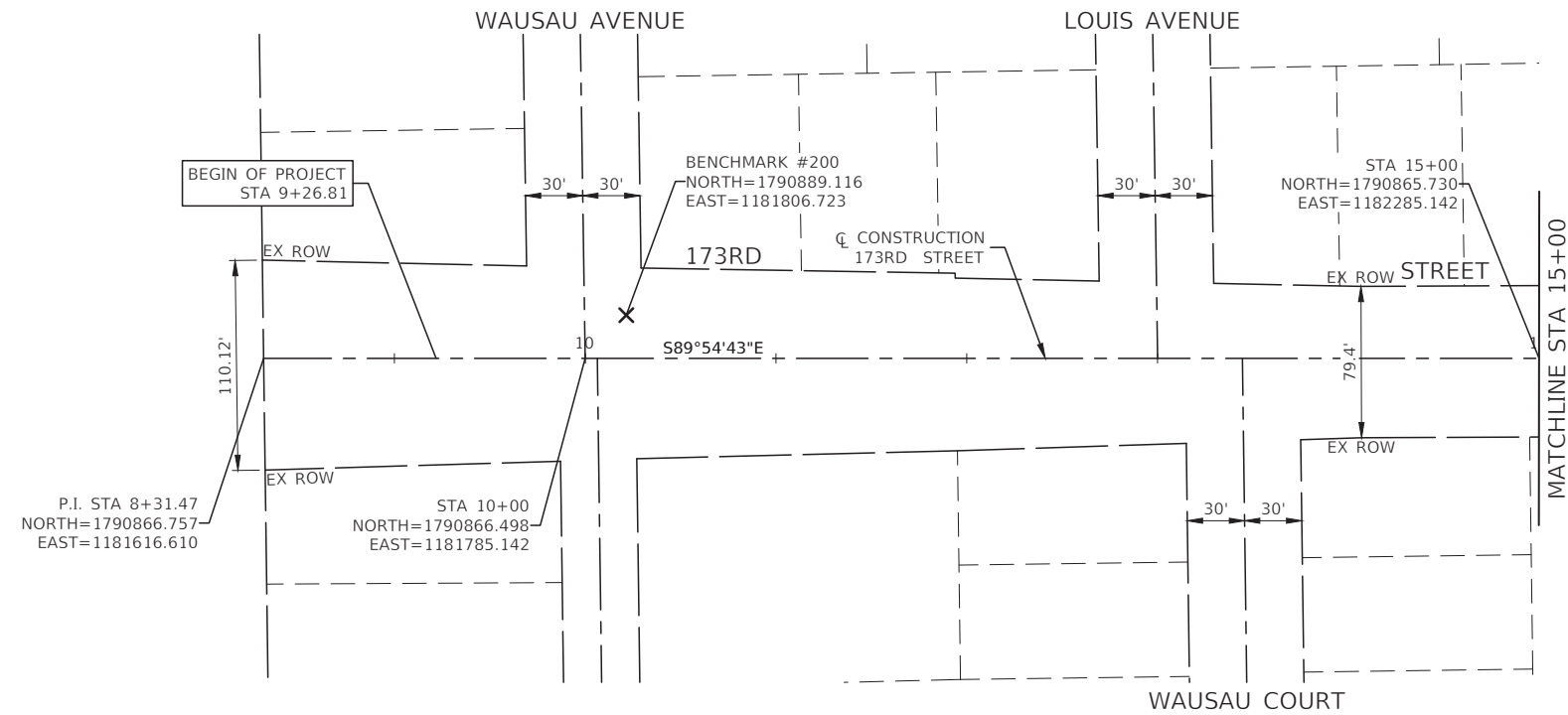
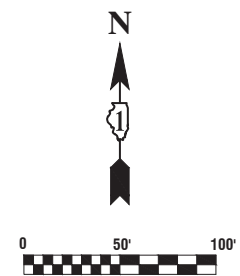
USER NAME =	DESIGNED — AEL	REVISED —
	CHECKED — JDH	REVISED —
PLOT SCALE =	DRAWN — BG	REVISED —
PLOT DATE = 09-26-25	CHECKED — AG	REVISED —

STATE OF ILLINOIS
DEPARTMENT OF TRANSPORTATION

173RD STREET
ROADWAY RESURFACING
TYPICAL CROSS SECTIONS

SCALE: NONE SHEET NO. 6 OF 15 SHEETS STA. TO STA.

F.A.U RTE.	SECTION	COUNTY	TOTAL SHEETS	SHEET NO.
1011	22-00116-00-RS	COOK	15	6
CONTRACT NO. 61M05				
FED. ROAD DIST. NO. 1 ILLINOIS FED. AID PROJECT 204J(991)				



NOTES

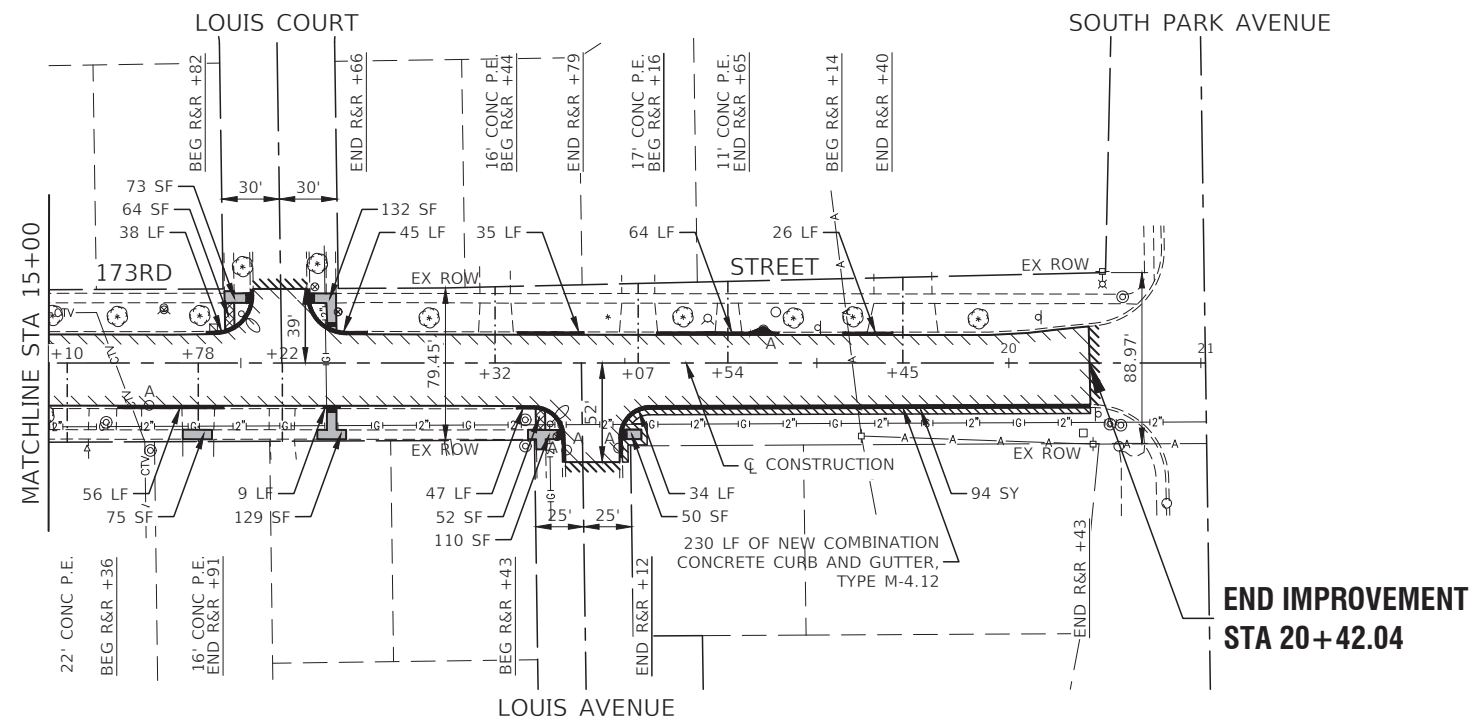
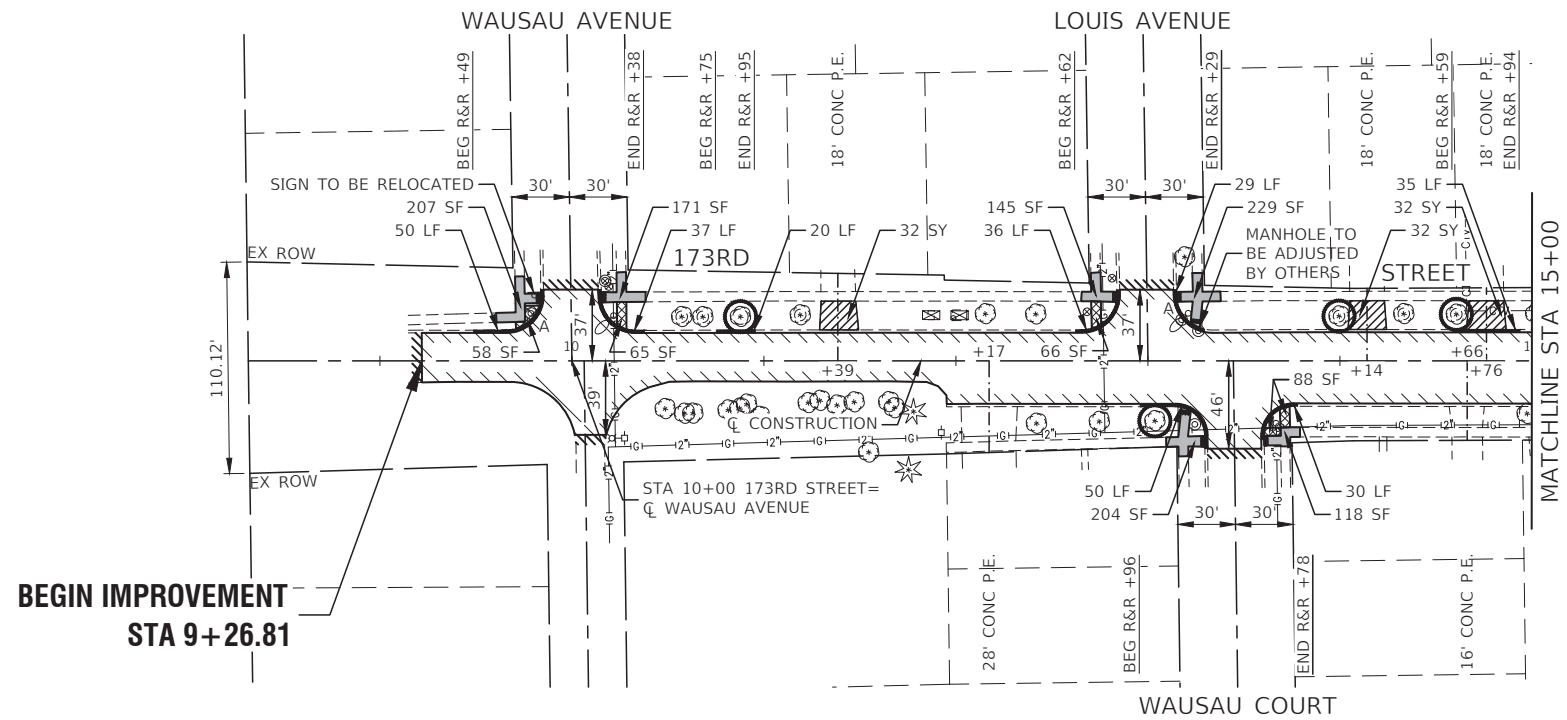
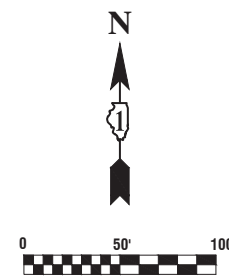
- COORDINATES ARE BASED ON ILLINOIS STATE PLANE EASTERN ZONE NORTH AMERICAN DATUM 1983
- SURVEY FEET UNITS WERE USED.
- ALL ELEVATIONS REFER TO NAVD88 DATUM.

BENCHMARKS

BENCHMARK #200
CROSS ON TOP OF SOUTH COR OF CONC BASE FOR LIGHT POLE AT NORTHEAST COR OF 173RD ST & WAUSAU AVE.
ELEV=619.42

BENCHMARK #201
SPIKE NAIL IN NORTH FACE OF PP AT SOUTHWEST COR 173RD ST & SOUTH PARK AVE.
ELEV=616.77

FILE NAME = 23R0706-TIES-01 - 173RD ST	USER NAME =	DESIGNED — AEL	REVISED —	STATE OF ILLINOIS DEPARTMENT OF TRANSPORTATION	173RD STREET ROADWAY RESURFACING ALIGNMENT, TIES AND BENCHMARKS			F.A.U RTE.	SECTION	COUNTY	TOTAL SHEETS	SHEET NO.
		CHECKED — JDH	REVISED —					1011	22-00116-00-RS	COOK	15	7
	PLOT SCALE =	DRAWN — BG	REVISED —					CONTRACT NO. 61M05				
	PLOT DATE = 10-29-25	CHECKED — AG	REVISED —		FED. ROAD DIST. NO. 1 ILLINOIS FED. AID PROJECT 204J(991)							
	SCALE: 1" = 50'		SHEET NO. 7 OF 15 SHEETS							STA. TO STA.		



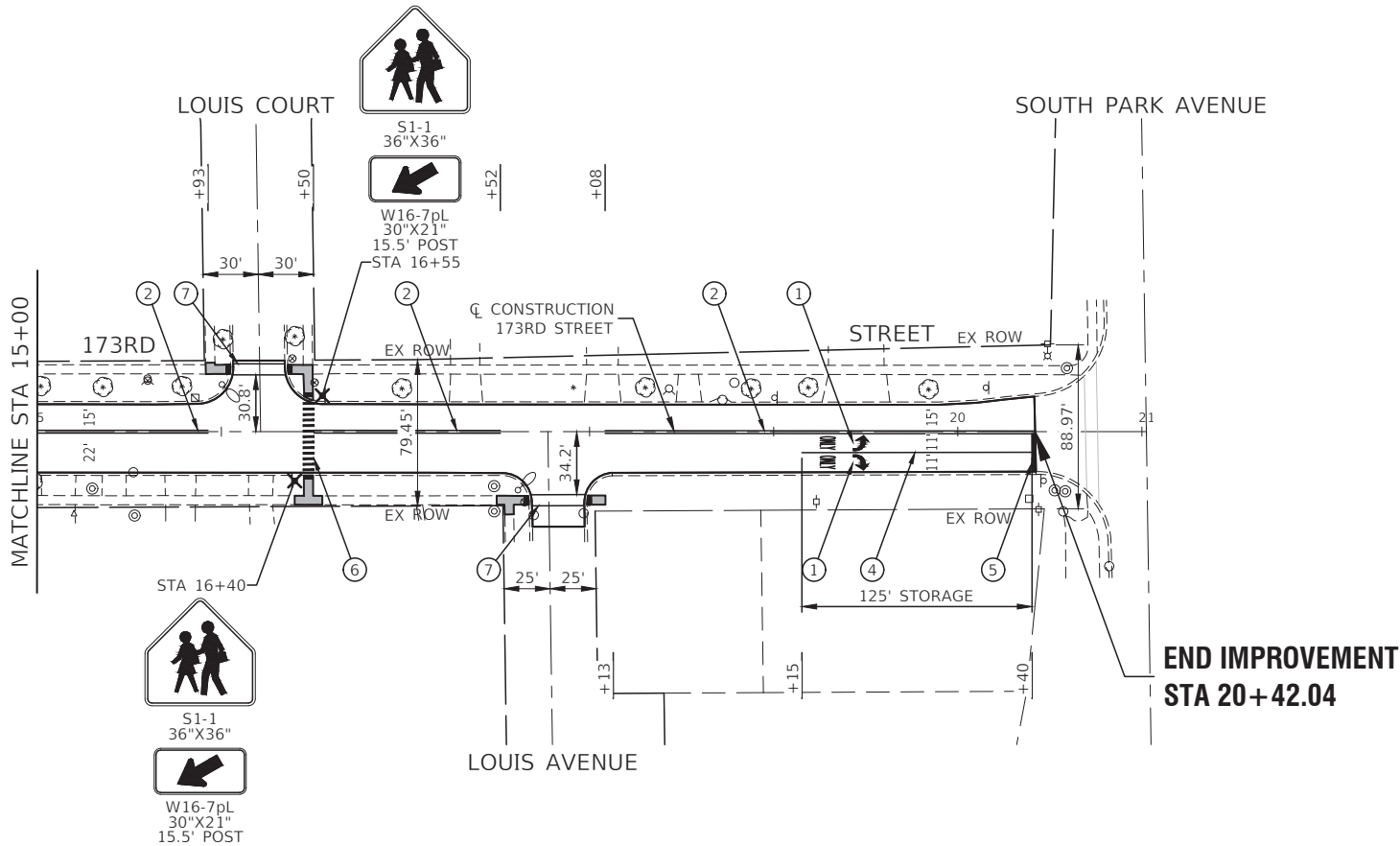
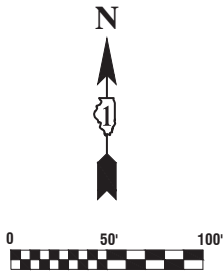
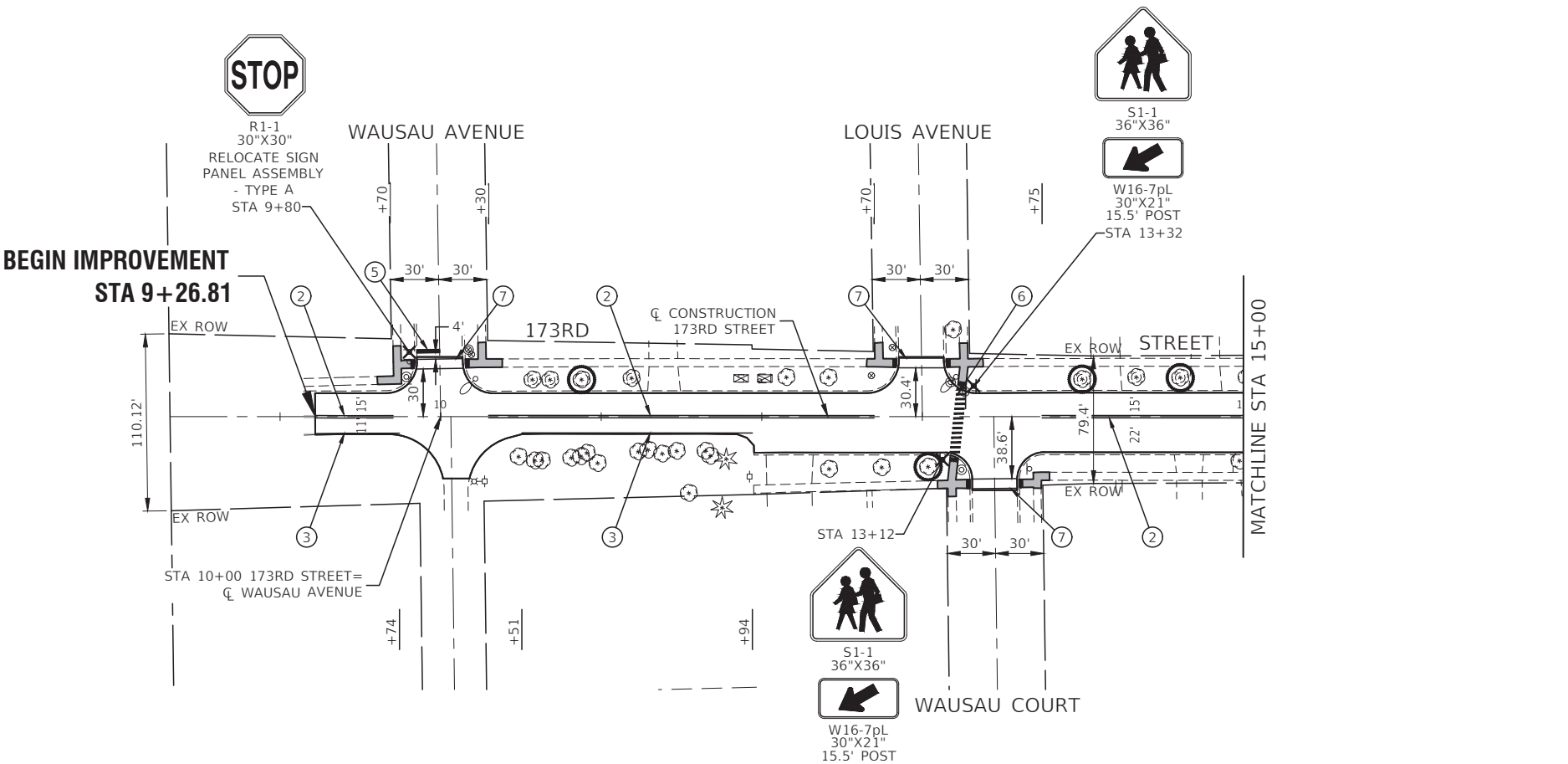
LEGEND

- HOT-MIX ASPHALT SURFACE REMOVAL, 4"
- HOT-MIX ASPHALT BINDER COURSE, IL-19.0, N50, 2 1/4"
- HOT-MIX ASPHALT SURFACE COURSE, IL-9.5, MIX "D", N50, 2"
- SIDEWALK REMOVAL
- SIDEWALK REMOVAL
PORTLAND CEMENT CONCRETE SIDEWALK 5 INCH (7 INCH THRU DRIVEWAYS)
AGGREGATE BASE COURSE, TYPE B, 4"
- DRIVEWAY PAVEMENT REMOVAL
PORTLAND CEMENT CONCRETE PAVEMENT, 7"
- DRIVEWAY PAVEMENT REMOVAL
HMA DRIVEWAY PAVEMENT, 4"
- TREE TRUNK PROTECTION
- DETECTABLE WARNINGS - DW
- COMBINATION CONCRETE CURB AND GUTTER REMOVAL
COMBINATION CONCRETE CURB AND GUTTER, TYPE M-4.12
- "A" DRAINAGE & UTILITY STRUCTURES TO BE ADJUSTED
- HMA SURFACE REMOVAL - BUTT JOINT
- BEG R&R +XX BEGIN STATION FOR CURB AND GUTTER REMOVAL AND REPLACEMENT
- END R&R +XX END STATION OF CURB AND GUTTER REMOVAL AND REPLACEMENT
- CL R&R +XX CENTER STATION OF CURB AND GUTTER REMOVAL AND REPLACEMENT (UNDER 20 LINEAL FEET)

NOTE:

- AREAS WHERE SIDEWALK IS TO BE REMOVED AND NOT REPLACED SHALL BE REPLACED WITH "TOPSOIL FURNISH AND PLACE, 4" AND "SODDING, SALT TOLERANT" UNLESS OTHERWISE NOTED.
- ALL SIDEWALK RAMPS WILL BE IN ACCORDANCE WITH THE HIGHWAY STANDARDS REFERENCED ON SHEET 2.

FILE NAME = 23R0706-PLAN-01 - 173RD	USER NAME =	DESIGNED — AEL	REVISED —	STATE OF ILLINOIS DEPARTMENT OF TRANSPORTATION	173RD STREET ROADWAY RESURFACING PROPOSED IMPROVEMENT PLAN				F.A.U RTE.	SECTION	COUNTY	TOTAL SHEETS	SHEET NO.
		CHECKED — JDH	REVISED —						1011	22-00116-00-RS	COOK	15	8
	PLOT SCALE =	DRAWN — BG	REVISED —						CONTRACT NO. 61M05				
	PLOT DATE = 10-29-25	CHECKED — AG	REVISED —		SCALE: 1"=50'				SHEET NO. 8 OF 15 SHEETS	STA.	TO STA.		
									FED. ROAD DIST. NO. 1	ILLINOIS	FED. AID PROJECT 204J(991)		



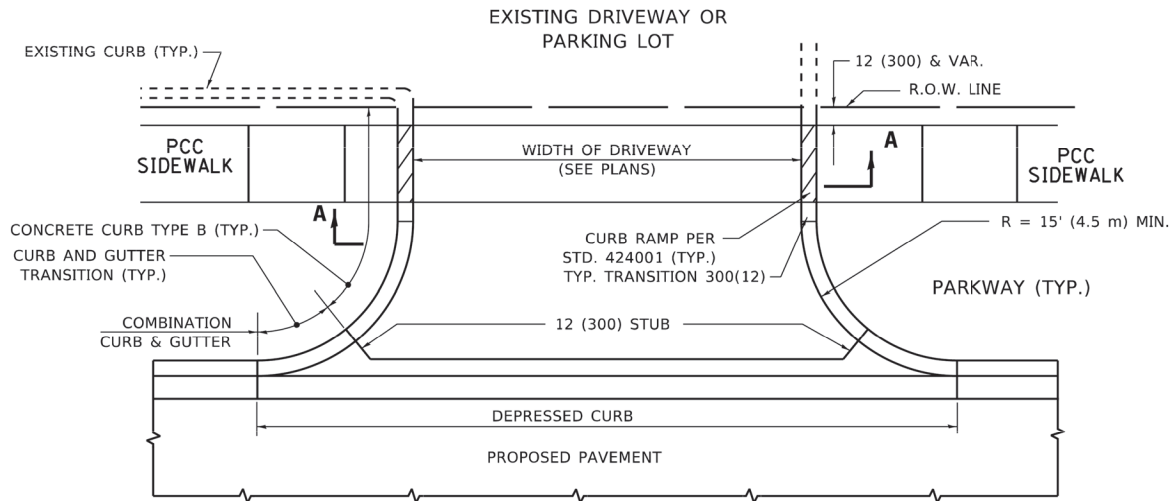
PAVEMENT MARKING LEGEND

- ① THERMOPLASTIC PAVEMENT MARKING - WHITE LETTERS & SYMBOLS
- ② THERMOPLASTIC PAVEMENT MARKING - LINE 4" DOUBLE YELLOW LINE (11" C-C)
- ③ THERMOPLASTIC PAVEMENT MARKING - LINE 4" WHITE EDGE LINE
- ④ THERMOPLASTIC PAVEMENT MARKING - LINE 6" WHITE LANE LINE
- ⑤ THERMOPLASTIC PAVEMENT MARKING - LINE 24" WHITE STOP BAR LINE
- ⑥ THERMOPLASTIC PAVEMENT MARKING - LINE 12" WHITE CROSS-WALK (3' C-C)
- ⑦ THERMOPLASTIC PAVEMENT MARKING - LINE 6" WHITE CROSS-WALK (6' C-C)

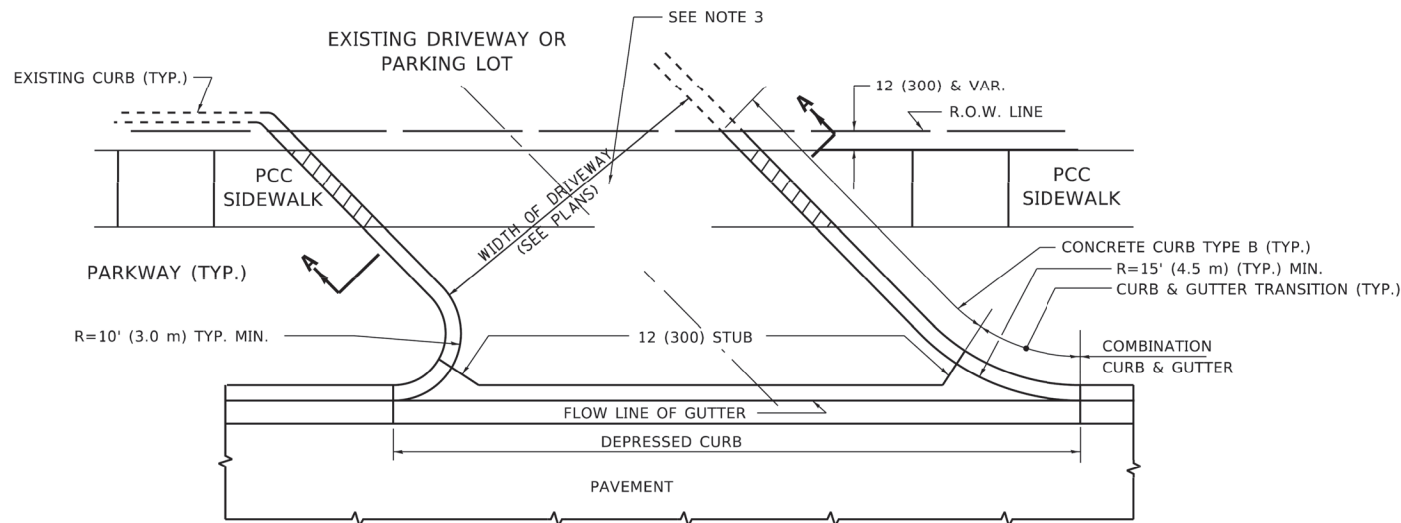
NOTES

- SEE TC-13 DISTRICT ONE TYPICAL PAVEMENT MARKING FOR GUIDANCE.
- ALL PAVEMENT MARKINGS SHALL BE THERMOPLASTIC UNLESS OTHERWISE SHOWN.
- PROPOSED SIGN POST TYPE SHALL BE TELESCOPING STEEL SIGN SUPPORT.
- THERMOPLASTIC PAVEMENT MARKING - LINE 4" DOUBLE YELLOW LINE SHALL BE INSTALLED WITHIN 3 CALENDAR DAYS AND ALL OTHER MARKINGS WITHIN 14 CALENDAR DAYS.

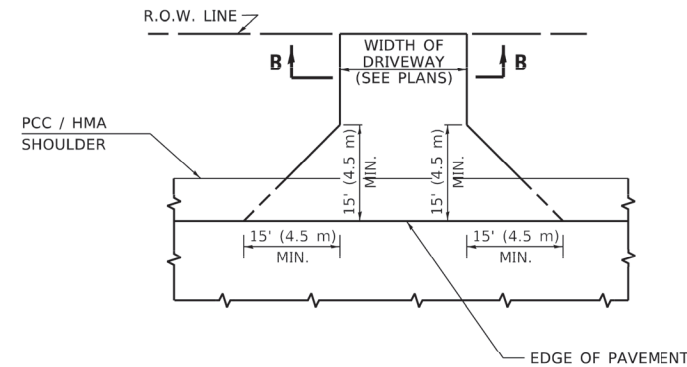
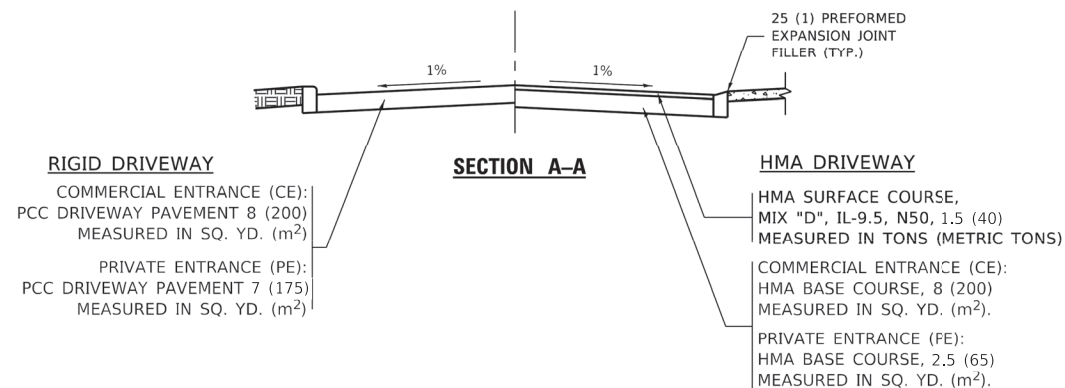
FILE NAME = 23R0706-PVMK-01 - 173RD	USER NAME =		DESIGNED — AEL	REVISED —	STATE OF ILLINOIS DEPARTMENT OF TRANSPORTATION	173RD STREET ROADWAY RESURFACING PAVEMENT MARKING AND SIGNAGE			F.A.U RTE.	SECTION	COUNTY	TOTAL SHEETS	SHEET NO.
			CHECKED — JDH	REVISED —					1011	22-00116-00-RS	COOK	15	9
	PLOT SCALE =		DRAWN — BG	REVISED —					CONTRACT NO. 61M05				
	PLOT DATE = 10-29-25		CHECKED — AG	REVISED —		SCALE: 1" = 50'			SHEET NO. 9	OF 15 SHEETS	STA.	TO STA.	FED. ROAD DIST. NO. 1 ILLINOIS FED. AID PROJECT 204J(991)



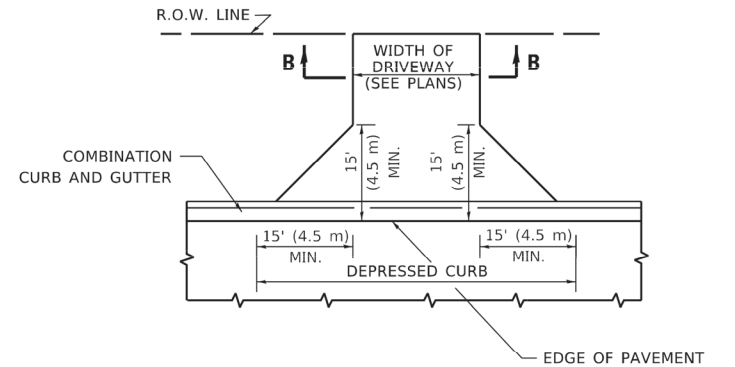
WITH CONCRETE CURB, TYPE B



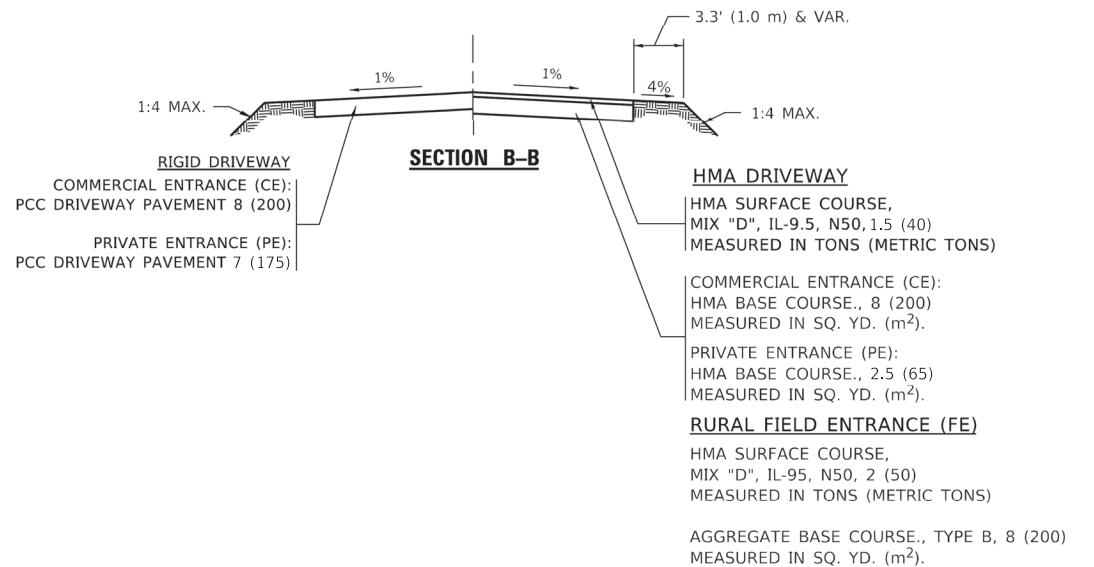
WITH CONCRETE CURB, TYPE B



ADJACENT TO PCC /HMA SHOULDER



ADJACENT TO CURB AND GUTTER

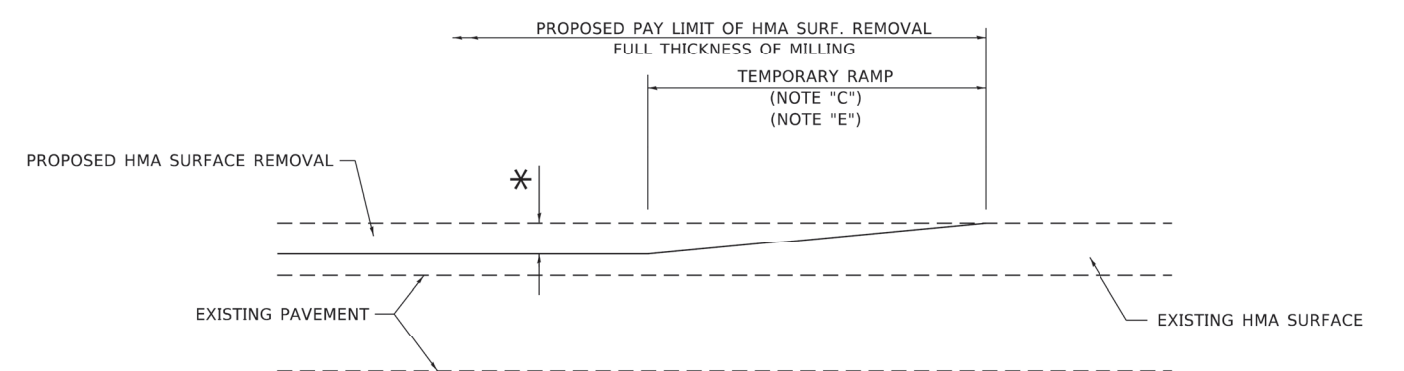


GENERAL NOTES

- DRIVEWAY SLOPES, LOCATIONS, & GEOMETRIC LAYOUT SHALL BE IN ACCORDANCE WITH THE LATEST EDITION OF THE "HANDBOOK FOR POLICY ON PERMITS FOR ACCESS DRIVEWAYS TO STATE HIGHWAYS". FOR FURTHER LAYOUT REQUIREMENTS, REFER TO ILLUSTRATIONS IN THE PERMIT HANDBOOK. DRIVEWAYS SHALL BE REPLACED IN KIND, UNLESS OTHERWISE NOTED ON THE PLANS.
- COMMERCIAL DRIVEWAYS SHALL BE CONSTRUCTED WITH CONCRETE CURB, TYPE B RETURNS EXCEPT WHEN THE SIDEWALK EDGE IS 4 FEET (1.2 METERS) OR LESS FROM THE BACK OF CURB, CONSTRUCT A FLARE DRIVEWAY WITHOUT CURB.

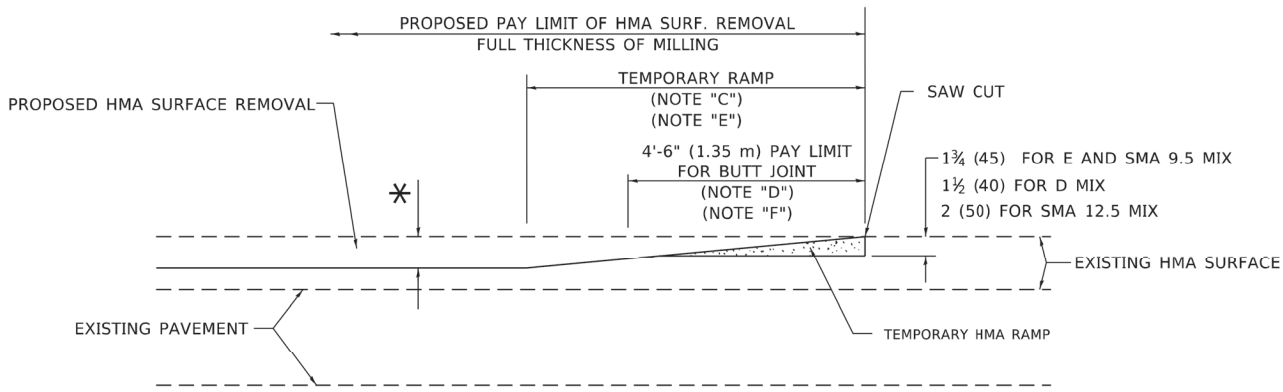
ALL DIMENSIONS ARE IN INCHES (MILLIMETERS) UNLESS OTHERWISE NOTED.

FILE NAME = 23R0706-DTLS-03 - BD01-REV	USER NAME =	DESIGNED —	REVISED —	STATE OF ILLINOIS DEPARTMENT OF TRANSPORTATION	173RD STREET ROADWAY RESURFACING CONSTRUCTION DETAILS - BD-01 (MODIFIED)	F.A.U RTE.	SECTION	COUNTY	TOTAL SHEETS	SHEET NO.
		CHECKED —	REVISED —			1011	22-00116-00-RS	COOK	15	10
	PLOT SCALE =	DRAWN —	REVISED —			CONTRACT NO. 61M05				
	PLOT DATE =	CHECKED —	REVISED —			SCALE:	SHEET NO. 1 OF 1 SHEETS	STA.	TO STA.	FED. ROAD DIST. NO. 1 ILLINOIS FED. AID PROJECT 204J(991)



MILLED TEMPORARY RAMP
(FOR BUTT JOINT AND HMA TAPER SEE DETAIL BELOW)

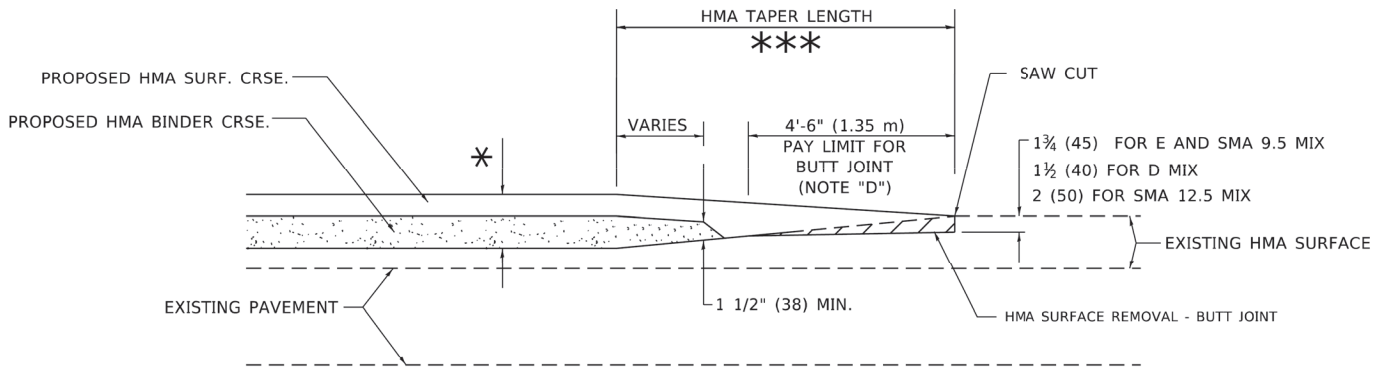
OPTION 1



HMA CONSTRUCTED TEMPORARY RAMP
(FOR BUTT JOINT AND HMA TAPER SEE DETAIL BELOW)

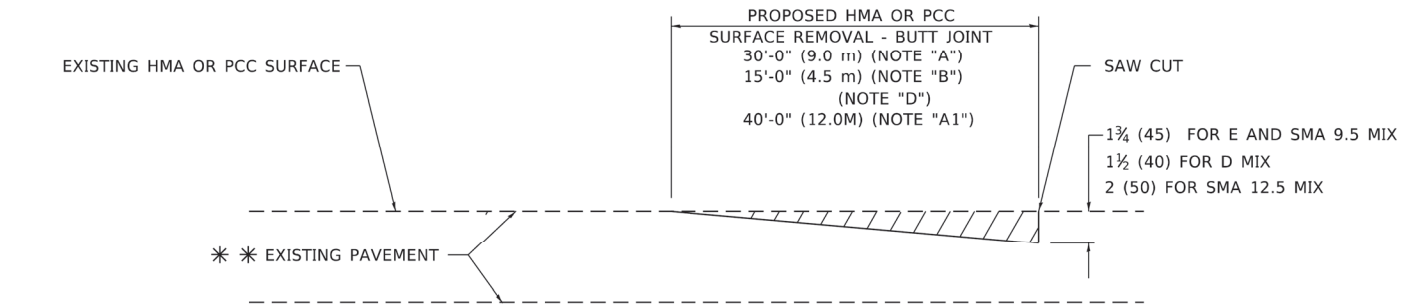
OPTION 2

TYPICAL TEMPORARY RAMP

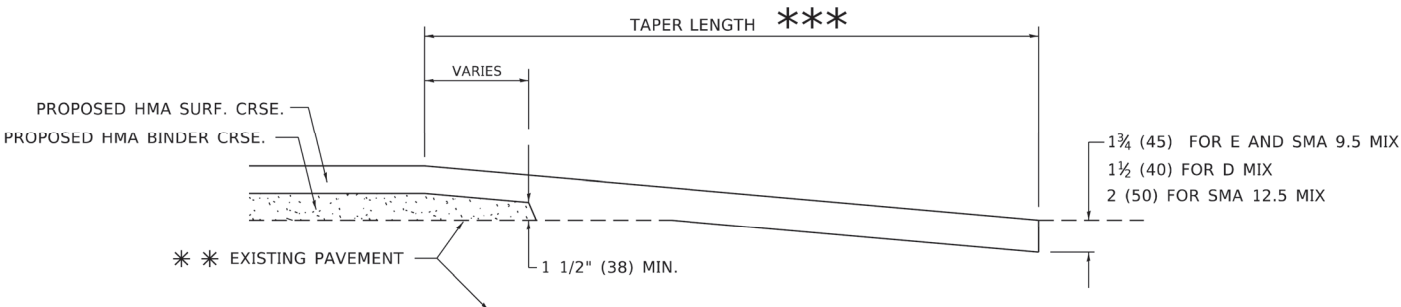


**BUTT JOINT AND
HMA TAPER**

**TYPICAL BUTT JOINT AND HMA TAPER
FOR MILLING AND RESURFACING**



BUTT JOINT DETAIL



HMA TAPER DETAIL

**TYPICAL BUTT JOINT AND HMA TAPER
FOR RESURFACING ONLY**

****** PC CONCRETE, HMA OR HMA RESURFACED PAVEMENT.

GENERAL NOTES

- A. MAINLINE ARTERIAL ROADWAYS AND MAJOR SIDE ROADS.
- A1. INTERSTATES
- B. MINOR SIDE ROADS.
- C. THE TEMP. RAMP SHALL BE CONSTRUCTED IMMEDIATELY UPON REMOVAL OF THE EXISTING HMA SURFACE.
- D. THE BUTT JOINT SHALL BE CONSTRUCTED IMMEDIATELY PRIOR TO PLACING THE PROPOSED HMA COURSES.
- E. TAPER THE TEMP. RAMP AT A RATE OF 3' - 4" (1.02m) PER 1 INCH (25 mm) OF MILLING THICKNESS.
***** SEE TYPICAL SECTIONS FOR MILLING THICKNESS.
- F. SEE ARTICLE 406.08 AND 406.14 OF THE STANDARD SPECIFICATIONS FOR "HMA AND/OR PCC SURFACE REMOVAL, BUTT JOINT".
******* 20'-0" (6.1 m) PER 1 (25) RESURFACING (NOTE "A")
10'-0" (3.0 m) PER 1 (25) RESURFACING (NOTE "B")

BASIS OF PAYMENT

- 1. THE BUTT JOINT WILL BE PAID FOR AT THE CONTRACT UNIT PRICE PER SQUARE YARD (SQUARE METER) FOR "HOT-MIX ASPHALT SURFACE REMOVAL - BUTT JOINT" OR FOR "PORTLAND CEMENT CONCRETE SURFACE REMOVAL- BUTT JOINT".
- 2. THE TEMPORARY RAMP AND SAW CUT SHALL BE INCLUDED IN THE UNIT COST FOR HMA OR PCC SURFACE REMOVAL-BUTT JOINT.

ALL DIMENSIONS ARE IN INCHES (MILLIMETERS) UNLESS OTHERWISE SHOWN.

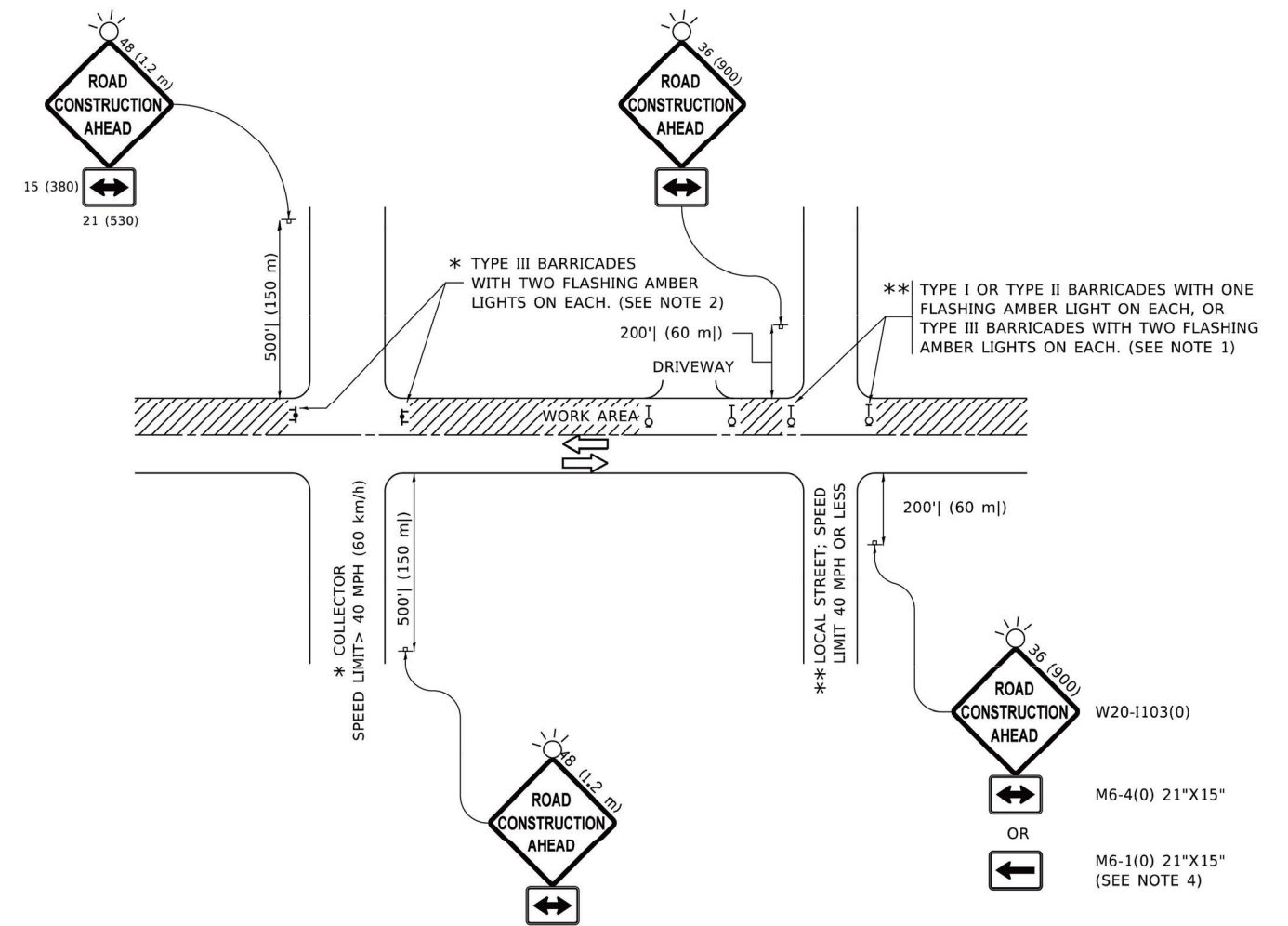
USER NAME = Lawrence.DeManche	DESIGNED - M. DE YONG	REVISED - A. ABBAS 03-21-97
	DRAWN -	REVISED - M. GOMEZ 04-06-01
PLOT SCALE = 100.0000 " / in.	CHECKED -	REVISED - R. BORO 01-01-07
PLOT DATE = 11/18/2022	DATE - 06-13-90	REVISED - K. SMITH 11-18-22

STATE OF ILLINOIS
DEPARTMENT OF TRANSPORTATION

**BUTT JOINT AND
HMA TAPER DETAILS**

SCALE: NONE SHEET 1 OF 1 SHEETS STA. TO STA.

F.A.U RTE.	SECTION	COUNTY	TOTAL SHEETS	SHEET NO.
1011	22-00116-00-RS	COOK	15	11
BD400-05 BD-32		CONTRACT NO. 61M05		
FED. ROAD DIST. NO. 1	ILLINOIS	FED. AID PROJECT 204J(991)		

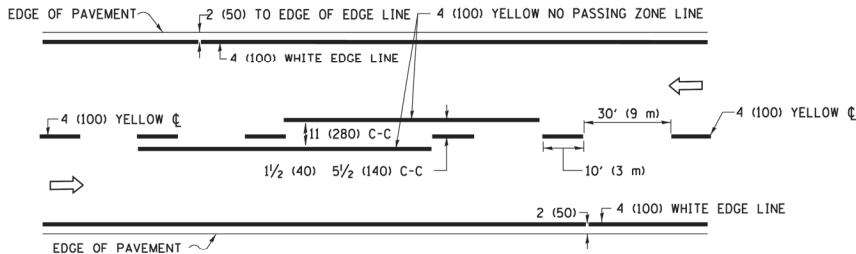


NOTES:

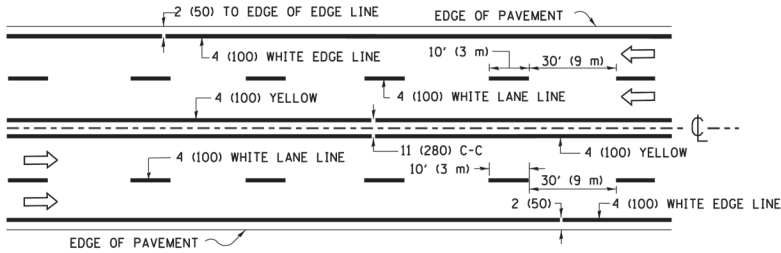
- SIDE ROAD WITH A SPEED LIMIT OF 40 MPH (60 km/h) OR LESS AS SHOWN ON THE DRAWING AND AS DIRECTED BY THE ENGINEER:
 - ONE "ROAD CONSTRUCTION AHEAD" SIGN 36 x 36 (900x900) WITH A FLASHER MOUNTED ON IT APPROXIMATELY 200' (60 m) IN ADVANCE OF THE MAIN ROUTE.
 - THE CLOSED PORTION OF THE MAIN ROUTE SHALL BE PROTECTED BY BLOCKING WITH TYPE I, TYPE II OR TYPE III BARRICADES, 1/3 OF THE CROSS SECTION OF THE CLOSED PORTION.
- SIDE ROAD WITH A SPEED LIMIT GREATER THAN 40 MPH (60 km/h) AS SHOWN ON THE DRAWING AND AS DIRECTED BY THE ENGINEER:
 - ONE "ROAD CONSTRUCTION AHEAD" SIGN 48 x 48 (1.2 m x 1.2 m) WITH A FLASHER MOUNTED ON IT APPROXIMATELY 500' (150 m) IN ADVANCE OF THE MAIN ROUTE.
 - THE CLOSED PORTION OF THE MAIN ROUTE SHALL BE PROTECTED BY BLOCKING WITH TYPE III BARRICADES, 1/2 OF THE CROSS SECTION OF THE CLOSED PORTION.
- CONES MAY BE SUBSTITUTED FOR BARRICADES OR DRUMS AT HALF THE SPACING DURING DAY OPERATIONS. CONES SHALL BE A MINIMUM OF 28 (710) IN HEIGHT.
- SIGNING AND THE WORK ZONE, A SINGLE HEADED ARROW (M6-1) SHALL BE USED IN LIEU OF THE DOUBLE HEADED ARROW (M6-4).
- WHEN WORK IS BEING PERFORMED ON A SIDE ROAD OR DRIVEWAY, FOLLOW THE APPLICABLE STANDARD(S). THE DIRECTIONAL ARROW (M6-1 OR M6-4) SHALL BE COVERED OR REMOVED WHEN NO LONGER CONSISTENT WITH THE TRAFFIC CONTROL SET-UP.
- ADVANCE WARNING SIGNS ARE TO BE OMITTED ON DRIVEWAYS UNLESS OTHERWISE SPECIFIED IN THE PLANS OR BY THE ENGINEER.
- THE TRAFFIC CONTROL AND PROTECTION FOR SIDE ROADS, INTERSECTIONS, AND DRIVEWAYS SHALL BE INCLUDED IN THE COST OF SPECIFIED TRAFFIC CONTROL STANDARDS OR ITEMS.

All dimensions are in inches (millimeters) unless otherwise shown.

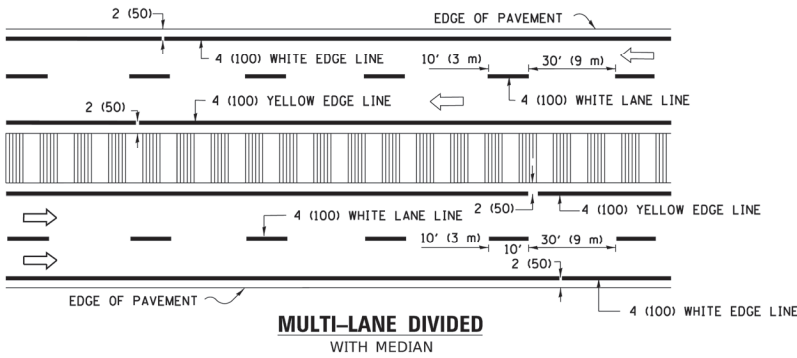
	USER NAME = Lawrence.DeManche	DESIGNED - L.H.A.	REVISED - T. RAMMACHER 01-06-00	STATE OF ILLINOIS DEPARTMENT OF TRANSPORTATION	TRAFFIC CONTROL AND PROTECTION FOR SIDE ROADS, INTERSECTIONS, AND DRIVEWAYS	F.A.U RTE.	SECTION	COUNTY	TOTAL SHEETS	SHEET NO.
		DRAWN -	REVISED - A. SCHUETZE 07-01-13			1011	22-00116-00-RS	COOK	15	12
	PLOT SCALE = 100.0000 ' / in.	CHECKED -	REVISED - A. SCHUETZE 09-15-16			TC-10		CONTRACT NO. 61M05		
	PLOT DATE = 5/3/2024	DATE - 06-89	REVISED - D. SENDERAK 05-03-24			FED. ROAD DIST. NO. 1	ILLINOIS	FED. AID PROJECT 204J(991)		
						SCALE: NONE	SHEET 1 OF 1 SHEETS	STA.	TO STA.	



2-LANE ROADWAY

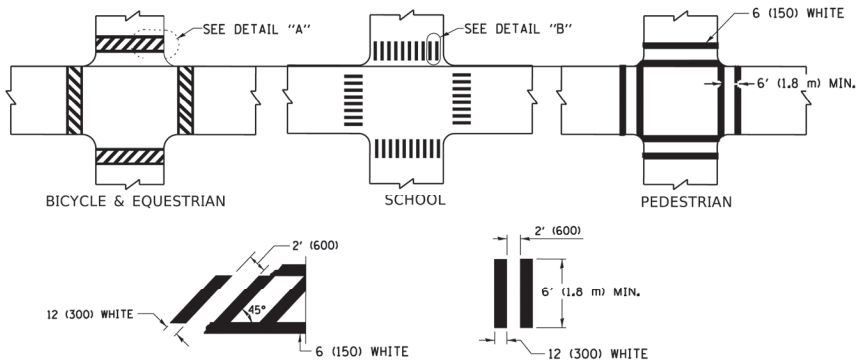


MULTI-LANE UNDIVIDED



MULTI-LANE DIVIDED
WITH MEDIAN

TYPICAL LANE AND EDGE LINE MARKING

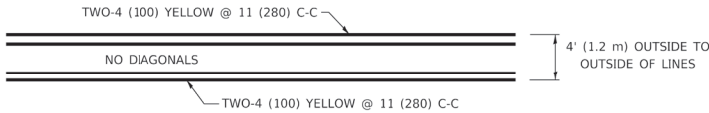


DETAIL "A"

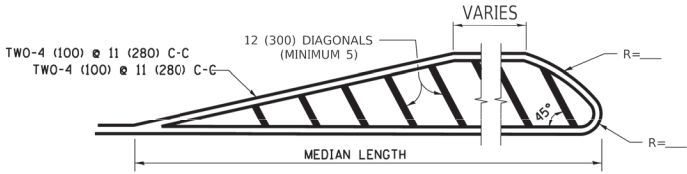
DETAIL "B"

TYPICAL CROSSWALK MARKING

* MARKINGS SHALL BE INSTALLED PARALLEL TO THE CENTERLINE OF THE ROAD WHICH IT CROSSES

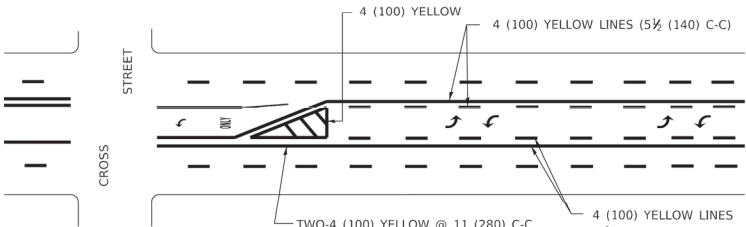


4' (1.2 m) WIDE MEDIANS ONLY

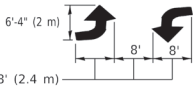


DIAGONAL LINE SPACING: 50' (15 m) C-C (LESS THAN 30MPH (50 km/h))
75' (25 m) C-C 30MPH (50 km/h) TO 45MPH (70 km/h))
150' (45 m) C-C (MORE THAN 45MPH (70 km/h))

MEDIANS OVER 4' (1.2 m) WIDE

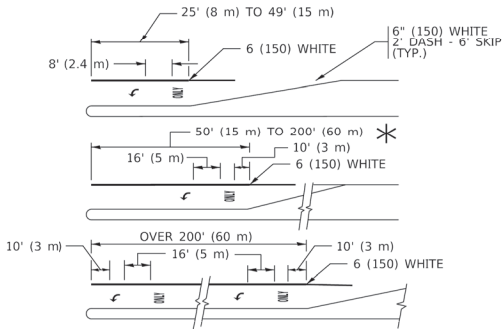


A MINIMUM OF TWO PAIRS OF TURN ARROWS SHALL BE USED, WHITE IN COLOR. ADDITIONAL PAIRS SHALL BE PLACED AT 200' (60 m) TO 300' (90 m) INTERVALS.



MEDIAN WITH TWO-WAY LEFT TURN LANE

TYPICAL PAINTED MEDIAN MARKING

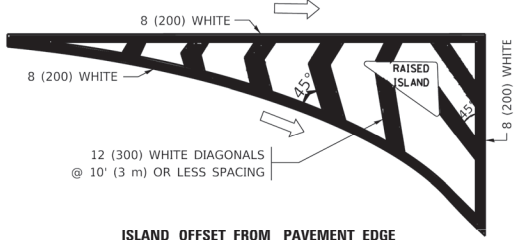


FULL SIZE LETTERS 8' (2.4 m) AND ARROWS SHALL BE USED.
AREA = 15.6 SQ. FT. (1.5 m²) ONLY AREA = 20.8 SQ. FT. (1.9 m²)

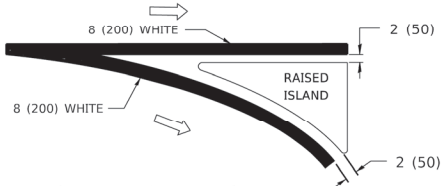
* TURN LANES IN EXCESS OF 400' (120 m) IN LENGTH MAY HAVE AN ADDITIONAL SET OF ARROW - "ONLY" INSTALLED MIDWAY BETWEEN THE OTHER TWO SETS OF ARROW - "ONLY".

TYPICAL LEFT (OR RIGHT) TURN LANE

TYPICAL TURN LANE MARKING

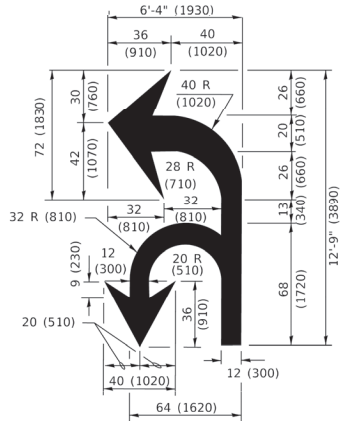


ISLAND OFFSET FROM PAVEMENT EDGE

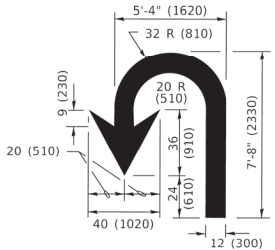


ISLAND AT PAVEMENT EDGE

TYPICAL ISLAND MARKING



COMBINATION
LEFT AND U-TURN



U-TURN

LANE REDUCTION TRANSITION

* LANE REDUCTION ARROWS REQUIRED AT SPEEDS OF 45 MPH OR GREATER OR WHEN SPECIFIED IN PLANS.

TYPE OF MARKING	WIDTH OF LINE	PATTERN	COLOR	SPACING / REMARKS
CENTERLINE ON 2 LANE PAVEMENT	4 (100)	SKIP-DASH	YELLOW	10' (3 m) LINE WITH 30' (9 m) SPACE
CENTERLINE ON MULTI-LANE UNDIVIDED PAVEMENT	2 @ 4 (100)	SOLID	YELLOW	11 (280) C-C
NO PASSING ZONE LINES: FOR ONE DIRECTION FOR BOTH DIRECTIONS	4 (100) 2 @ 4 (100)	SOLID SOLID	YELLOW YELLOW	5 1/2 (140) C-C FROM SKIP-DASH CENTERLINE 11 (280) C-C OMIT SKIP-DASH CENTERLINE BETWEEN
LANE LINES	4 (100) 5 (125) ON FREEWAYS	SKIP-DASH SKIP-DASH	WHITE WHITE	10' (3 m) LINE WITH 30' (9 m) SPACE
DOTTED LINES (EXTENSIONS OF CENTER, LANE OR TURN LANE MARKINGS)	SAME AS LINE BEING EXTENDED	SKIP-DASH	SAME AS LINE BEING EXTENDED	2' (600) LINE WITH 6' (1.8 m) SPACE
EDGE LINES	4 (100)	SOLID	YELLOW-LEFT WHITE-RIGHT	OUTLINE MEDIANS IN YELLOW
TURN LANE MARKINGS	6 (150) LINE; FULL SIZE LETTERS & SYMBOLS (8' (2.4m))	SOLID	WHITE	SEE TYPICAL TURN LANE MARKING DETAIL
TWO WAY LEFT TURN MARKING	2 @ 4 (100) EACH DIRECTION 8' (2.4m) LEFT ARROW	SKIP-DASH AND SOLID IN PAIRS	YELLOW WHITE	10' (3 m) LINE WITH 30' (9 m) SPACE FOR SKIP-DASH; 5 1/2 (140) C-C BETWEEN SOLID LINE AND SKIP-DASH LINE SEE TYPICAL TWO-WAY LEFT TURN MARKING DETAIL
CROSSWALK LINES (PEDESTRIAN) A. DIAGONALS (DIKE & EQUESTRIAN) B. LONGITUDINAL BARS (SCHOOL)	2 @ 6 (150) 12 (300) @ 45° 12 (300) @ 90°	SOLID SOLID SOLID	WHITE WHITE WHITE	NOT LESS THAN 6' (1.8 m) APART 2' (600) APART SEE TYPICAL CROSSWALK MARKING DETAILS.
STOP LINES	24 (600)	SOLID	WHITE	PLACE 4' (1.2 m) IN ADVANCE OF AND PARALLEL TO CROSSWALK, IF PRESENT. OTHERWISE, PLACE AT DESIRED STOPPING POINT. PARALLEL TO CROSSROAD CENTERLINE, WHERE POSSIBLE
PAINTED MEDIANS	2 @ 4 (100) WITH 12 (300) DIAGONALS @ 45° NO DIAGONALS USED FOR 4' (1.2 m) WIDE MEDIANS	SOLID	YELLOW: TWO WAY TRAFFIC WHITE: ONE WAY TRAFFIC	11 (280) C-C FOR THE DOUBLE LINE SEE TYPICAL PAINTED MEDIAN MARKING.
GORE MARKING AND CHANNELIZING LINES	8 (200) WITH 12 (300) DIAGONALS @ 45°	SOLID	WHITE	DIAGONALS: 15' (4.5 m) C-C (LESS THAN 30MPH (50 km/h)) 20' (6 m) C-C 30MPH (50 km/h) TO 45MPH (70 km/h)) 30' (9 m) C-C (OVER 45MPH (70 km/h))
RAILROAD CROSSING	24 (600) TRANSVERSE LINES; "RR" 15 3' (1.8 m) LETTERS; 16 (400) LINE FOR "X"	SOLID	WHITE	SEE STATE STANDARD 780001 AREA OF: "R"=3.6 SQ. FT. (0.33 m ²) EACH "X"=54.0 SQ. FT. (5.0 m ²)
SHOULDER DIAGONALS (REQUIRED FOR SHOULDERS ≥ 8')	12 (300) @ 45°	SOLID	WHITE - RIGHT YELLOW - LEFT	50' (15 m) C-C (LESS THAN 30MPH (50 km/h)) 75' (25 m) C-C (30 MPH (50 km/h) TO 45MPH (70 km/h)) 150' (45 m) C-C (OVER 45MPH (70 km/h))
U TURN ARROW	SEE DETAIL	SOLID	WHITE	16.3 SF
2 ARROW COMBINATION LEFT AND U TURN	SEE DETAIL	SOLID	WHITE	30.4 SF

FOR FURTHER DETAILS ON PAVEMENT MARKING REFER TO STANDARD SPECIFICATIONS FOR ROAD AND BRIDGE CONSTRUCTION AND STATE STANDARD 780001.

All dimensions are in inches (millimeters) unless otherwise shown.

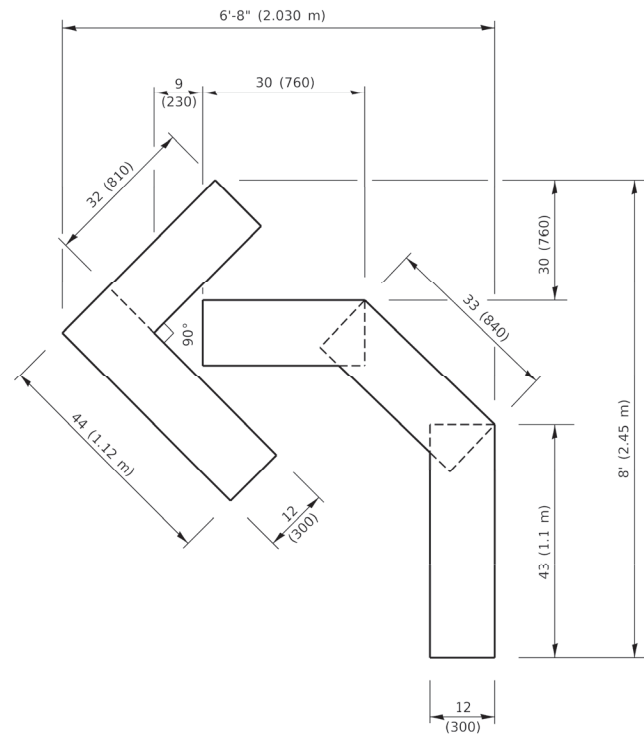
USER NAME = footemj	DESIGNED - EVERS	REVISED - C. JUCIUS 09-09-09
	DRAWN -	REVISED - C. JUCIUS 07-01-13
PLOT SCALE = 50.0000 ' / in.	CHECKED -	REVISED - C. JUCIUS 12-21-15
PLOT DATE = 3/4/2019	DATE - 03-19-90	REVISED - C. JUCIUS 04-12-16

STATE OF ILLINOIS
DEPARTMENT OF TRANSPORTATION

DISTRICT ONE
TYPICAL PAVEMENT MARKINGS

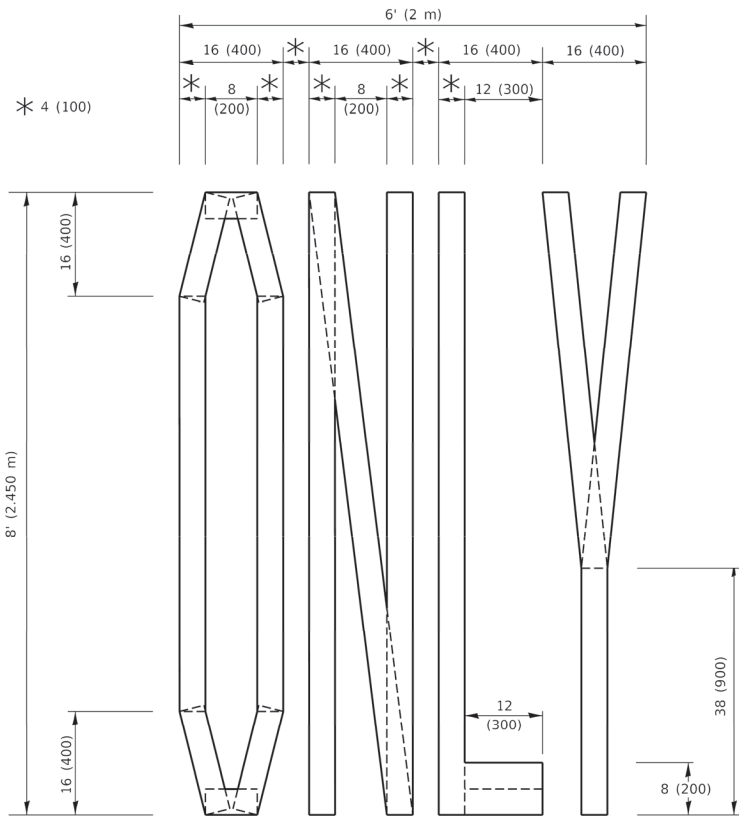
SCALE: NONE SHEET 1 OF 1 SHEETS STA. TO STA.

F.A.U RTE.	SECTION	COUNTY	TOTAL SHEETS	SHEET NO.
1011	22-00116-00-RS	COOK	15	13
TC-13		CONTRACT NO. 61M05		
FED. ROAD DIST. NO. 1	ILLINOIS	FED. AID PROJECT 204J(991)		



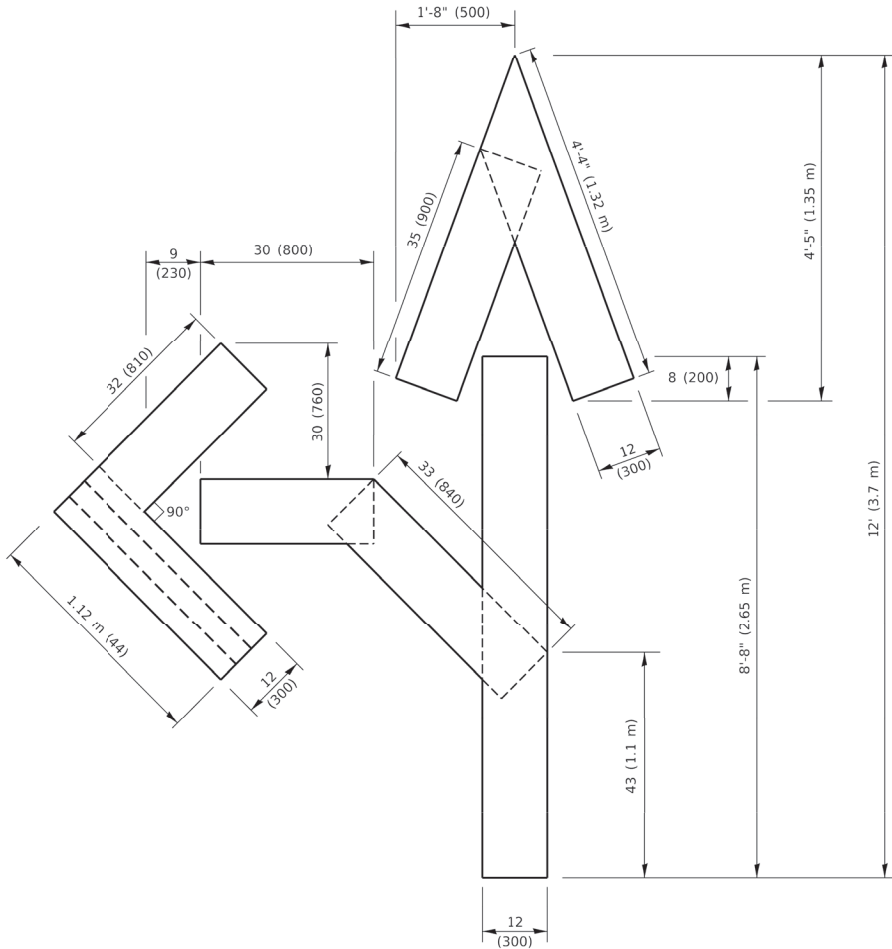
QUANTITY

4 (100) LINE = 45.5 ft. (13.9 m)
15.2 sq. ft. (1.41 sq. m)



QUANTITY

4 (100) LINE = 64.1 ft. (19.5 m)
21.4 sq. ft. (1.99 sq. m)

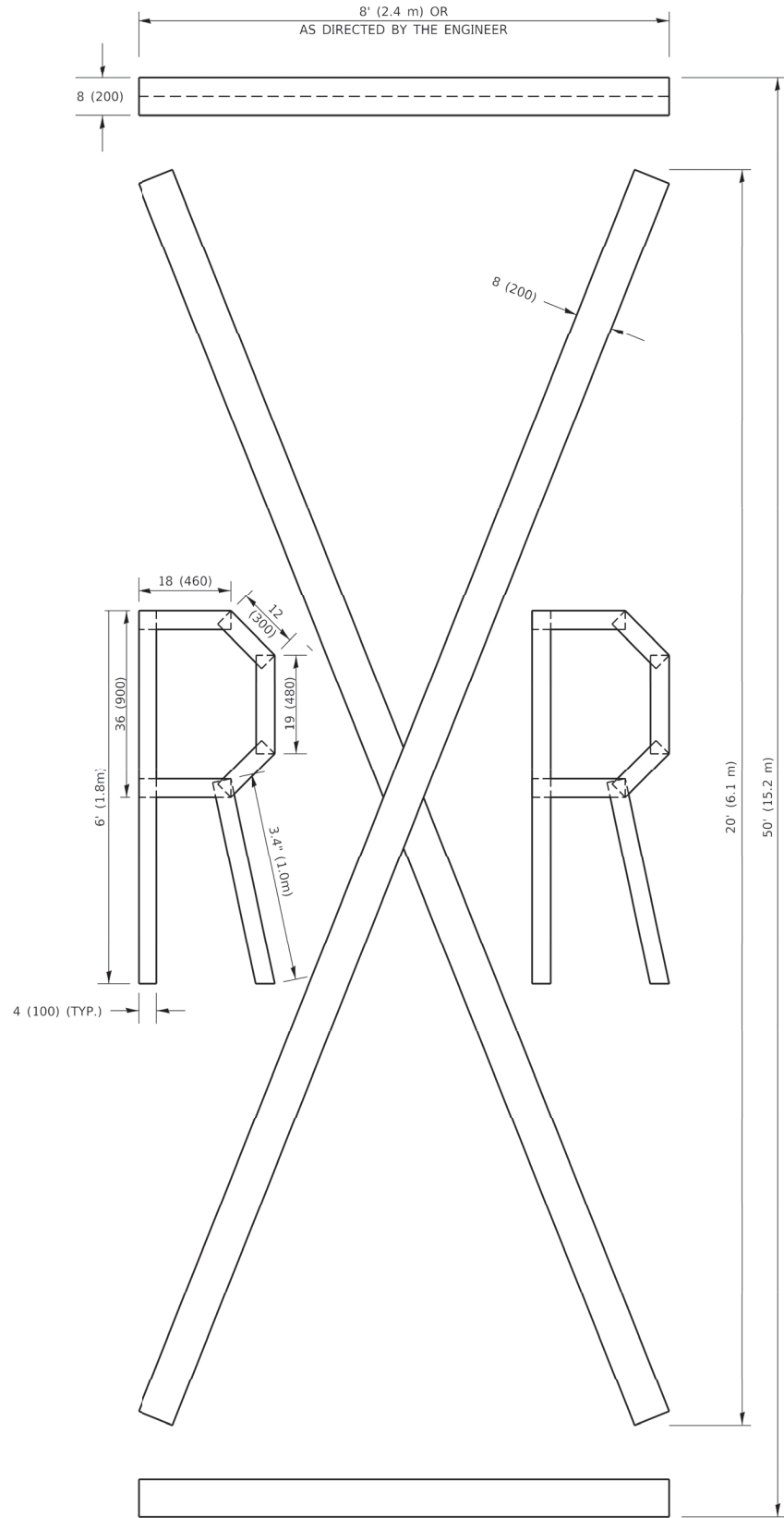


QUANTITY

4 (100) LINE = 82.5 ft. (25.1 m)
27.5 sq. ft. (2.53 sq. m)

NOTE:

ALL QUANTITIES OF PLACEMENT ARE REPRESENTED IN LINEAR FEET OF 4" LINES TO MATCH THE 4" TEMPORARY TAPE PAY ITEM AND REPRESENTS THE TOTAL QUANTITY OF 4" TAPE REQUIRED.

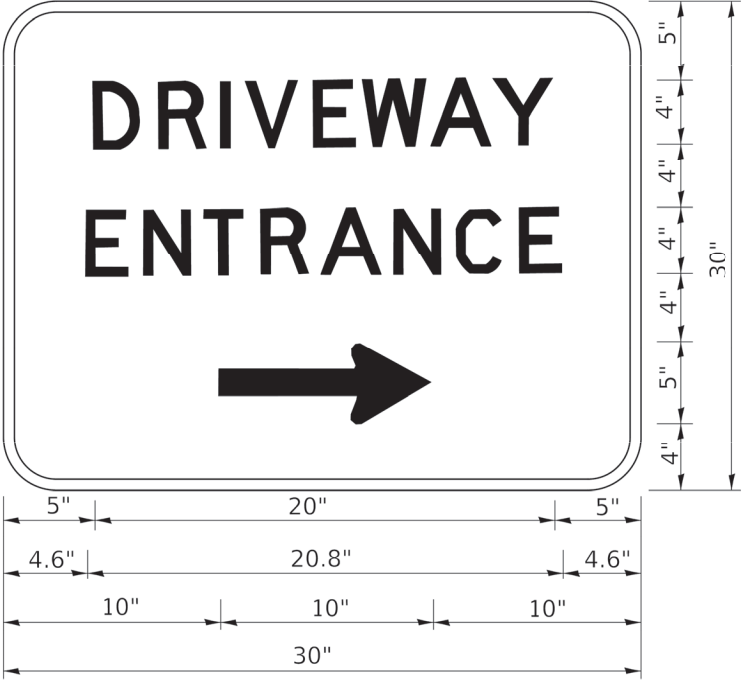


QUANTITY

4 (100) LINE = 225.9 ft. (68.9 m)
75.3 sq. ft. (6.99 sq. m)

All dimensions are in inches (millimeters) unless otherwise shown.

	USER NAME = footermj	DESIGNED -	REVISED - T. RAMMACHER 03-02-98	STATE OF ILLINOIS DEPARTMENT OF TRANSPORTATION	SHORT TERM PAVEMENT MARKING LETTERS AND SYMBOLS					F.A.U RTE.	SECTION	COUNTY	TOTAL SHEETS	SHEET NO.
		DRAWN -	REVISED - E. GOMEZ 08-28-00							1011	22-00116-00-RS	COOK	15	14
	PLOT SCALE = 50.0068 ' / in.	CHECKED -	REVISED - E. GOMEZ 08-28-00							TC-16		CONTRACT NO. 61M05		
	PLOT DATE = 3/4/2019	DATE - 09-18-94	REVISED - A. SCHUETZE 09-15-16							FED. ROAD DIST. NO. 1	ILLINOIS	FED. AID PROJECT 204J(991)		
					SCALE: NONE	SHEET 1	OF 1	SHEETS	STA.	TO STA.				



3.0" RADIUS, 0.5" BORDER, WHITE ON GREEN; REFLECTORIZED
"DRIVEWAY" D; "ENTRANCE" D; STANDARD ARROW CUSTOM 12.0" x 5.0"

- NOTES:
- 1. HALF OF THE SIGNS WILL REQUIRE A LEFT HAND FACING ARROW.
 - 2. TWO SIGNS SHALL BE USED AT EACH COMMERCIAL ENTRANCE
PLACED BACK-TO-BACK: ONE WITH A RIGHT HAND ARROW (SHOWN)
SHALL BE PLACED ON THE NEAR RIGHT SIDE THE DRIVEWAY
AND ONE WITH A LEFT HAND ARROW SHALL BE PLACED ON THE
FAR LEFT SIDE OF THE DRIVEWAY.
 - 3. SIGNS TO BE PAID FOR AS ITEM "TEMPORARY INFORMATION SIGNING".