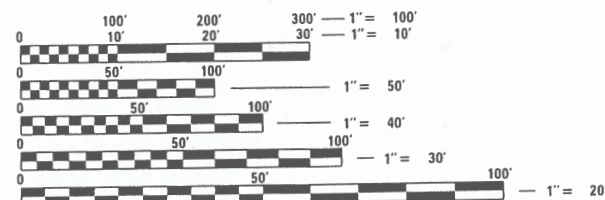
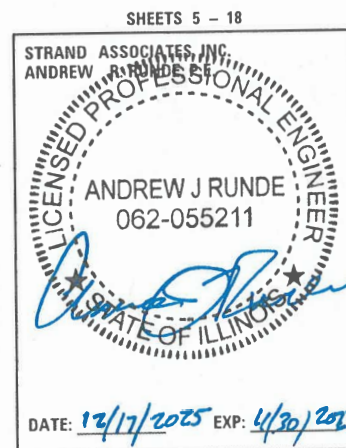
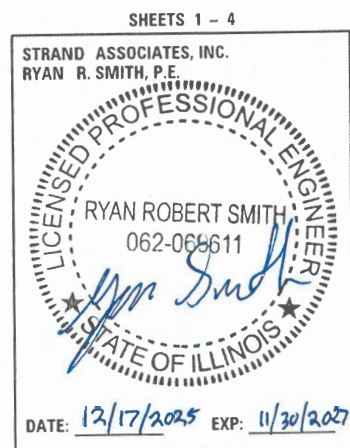


FEDERAL AID PROGRAM ENGINEER: CARMEN E. RAMOS, P.E., SCHAUMBURG, IL

02-27-2026 LETTING ITEM 077

FOR INDEX OF SHEETS, SEE SHEET NO. 2
FOR INDEX OF HIGHWAY STANDARDS, SEE SHEET NO. 2

TRAFFIC DATA
US 12 /20 (95TH STREET): PRINCIPAL ARTERIAL
POSTED SPEED = 30-35 MPH
2023 AADT: 28,500 - 29,800



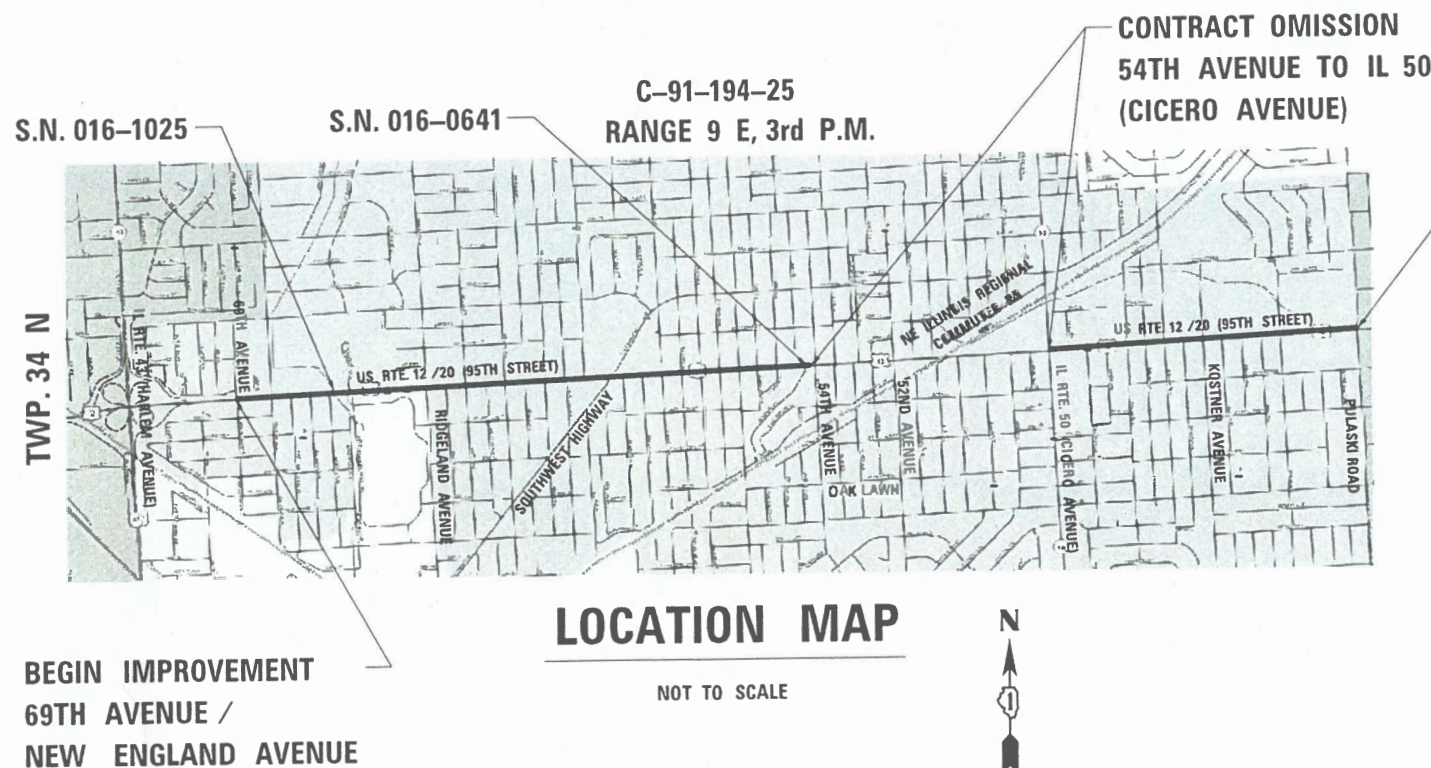
FULL SIZE PLANS HAVE BEEN PREPARED USING STANDARD ENGINEERING SCALES. REDUCED SIZED PLANS WILL NOT CONFORM TO STANDARD SCALES. IN MAKING MEASUREMENTS ON REDUCED PLANS, THE ABOVE SCALES MAY BE USED.

J.U.L.I.E.
JOINT UTILITY LOCATION INFORMATION FOR EXCAVATION
1-800-892-0123
OR 811

STATE OF ILLINOIS
DEPARTMENT OF TRANSPORTATION

PLANS FOR PROPOSED FEDERAL AID HIGHWAY

FAP ROUTE 29
U.S. RTE. 12 /20 (95TH STREET)
69TH AVENUE / NEW ENGLAND AVENUE
TO PULASKI ROAD
LED REPLACEMENT PROJECT
SECTION 24-00198-00-LT
PROJECT NO. FEZ7(993)
VILLAGE OF OAK LAWN
COOK COUNTY



GROSS LENGTH = 3.91 MILES = 20,645 FEET
NET LENGTH = 2.91 MILES = 15,365 FEET



STATE OF ILLINOIS
DEPARTMENT OF TRANSPORTATION

APPROVED
VILLAGE OF OAK LAWN, DIRECTOR OF PUBLIC WORKS

PASSED
DISTRICT ENGINEER OF LOCAL ROADS & STREETS

RELEASING FOR
BID BASED ON
LIMITED REVIEW
REGIONAL ENGINEER

PRINTED BY THE AUTHORITY
OF THE STATE OF ILLINOIS

CONTRACT NO. 61M21

INDEX OF SHEETS

SHEET NO. DESCRIPTION

1	COVER SHEET
2	GENERAL NOTES, INDEX OF SHEETS, STANDARDS, AND MAINTAINANCE OF TRAFFIC NOTES
3	SUMMARY OF QUANTITIES
4	EXISTING AND PROPOSED TYPICAL SECTION
5 - 16	REMOVAL AND PROPOSED LIGHTNING DRAWINGS
17 - 18	DISTRICT 1 STANDARDS

HIGHWAY STANDARDS

000001-09	STANDARD SYMBOLS, ABBREVIATIONS, AND PATTERNS
001006	DECIMAL OF AN INCH AND OF A FOOT
701101-05	OFF-ROAD OPERATIONS, MULTILANE, 15' (4.5 M) TO 24" (600 MM) FROM PAVEMENT EDGE
701427-05	LANE CLOSURE, MULTILANE, INTERMITTENT OR MOVING OPERATIONS, FOR SPEEDS ≤ 40 MPH
701602-10	URBAN LANE CLOSURE, MULTILANE, 2W WITH BIDIRECTIONAL LEFT TURN LANE
701701-10	URBAN LANE CLOSURE, MULTILANE INTERSECTION
701801-06	SIDEWALK, CORNER OR CROSSWALK CLOSURE
701901-11	TRAFFIC CONTROL DEVICES

DISTRICT ONE STANDARDS

BE-701	LUMINAIRE SAFETY CABLE ASSEMBLY
BE-702	MISCELLANEOUS ELECTRICAL DETAILS, SHEET A - (CABLE SPLICE, POLE WIRING, TRENCH DETAIL)

GENERAL NOTES

1. ALL CONSTRUCTION SHALL BE DONE IN ACCORDANCE WITH THE DETAILS IN THE PLANS, THE SPECIAL PROVISIONS INCLUDED IN THE CONTRACT DOCUMENTS, THE STATE OF ILLINOIS "STANDARD SPECIFICATIONS FOR ROAD AND BRIDGE CONSTRUCTION" (STANDARD SPECIFICATIONS) ADOPTED JANUARY 1, 2022, THE "SUPPLEMENTAL SPECIFICATIONS AND RECURRING SPECIAL PROVISIONS" ADOPTED JAN. 1, 2026, THE DETAILS IN THESE PLANS, AND THE SPECIAL PROVISIONS INCLUDED IN THE CONTRACT DOCUMENTS.
2. THE CONTRACTOR SHALL NOTIFY OAK LAWN PUBLIC WORKS (708-499-7756) AT LEAST 48 HOURS IN ADVANCE OF BEGINNING WORK.
3. THE CONTRACTOR SHALL CONTACT KALPANA KANNAN-HOSADURGA, THE IDOT ARTERIAL DISTRICT ONE TRAFFIC CONTROL SUPERVISOR, AT KALPANA KANNAN-HOSADURGA@ILLINOIS.GOV A MINIMUM OF 72 HOURS IN ADVANCE OF BEGINNING WORK.

4. LOCATIONS OF LIGHT POLES SHOWN ON THESE DRAWINGS IS APPROXIMATE BASED ON A LIMITED AMOUNT OF AS-BUILT DRAWINGS, AERIAL PHOTOGRAPHY, STREETVIEW PHOTOGRAPHY, AND GIS INFORMATION. IT SHALL BE THE RESPONSIBILITY OF THE CONTRACTOR TO ASCERTAIN THE EXISTING LIGHTING CONTROLLER LOCATIONS AND BRANCH CIRCUITRY IN ORDER TO COMPLETE THIS WORK. THE CONTRACTOR SHALL COORDINATE WITH THE VILLAGE OF OAK LAWN PUBLIC WORKS TO REQUEST AVAILABLE RECORD DRAWINGS AND ADDITIONAL INFORMATION ABOUT THE EXISTING LIGHTING SYSTEM.
5. IT WILL BE THE CONTRACTOR'S RESPONSIBILITY TO NOTIFY THE ENGINEER, RESIDENTS, BUSINESS OWNERS AND THE VILLAGE OF OAK LAWN WHEN ACCESS TO SIDEWALKS, CURB RAMPS, DRIVEWAYS, AND BUSINESSES WILL BE TEMPORARILY CLOSED DUE TO THE LED LUMINAIRE REPLACEMENT.
6. CONTRACTOR SHALL COORDINATE WORK SUCH THAT ACCESS IS MAINTAINED FOR OPERATIONS OF PACE TRANSIT AND BUS SERVICES
7. THE CONTRACTOR SHALL TAKE ALL NECESSARY PRECAUTIONS FOR THE PROTECTION OF EXISTING PLANT MATERIAL FOR WHICH THE CONTRACT DOES NOT PROVIDE REMOVAL. THE PROTECTION OF EXISTING PLANT MATERIAL AND THE REPAIR OR REPLACEMENT OF EXISTING PLANT MATERIAL DAMAGED BY THE CONTRACTOR SHALL BE DONE IN ACCORDANCE WITH THE REQUIREMENTS OF SECTION 201 OF THE STANDARD SPECIFICATIONS.
8. IT SHALL BE THE CONTRACTOR'S RESPONSIBILITY TO VERIFY ALL THE DIMENSIONS AND CONDITIONS EXISTING IN THE FIELD PRIOR TO CONSTRUCTION AND ORDERING OF MATERIALS.
9. ANY REFERENCE TO STANDARDS THROUGHOUT THE PLANS OR SPECIAL PROVISIONS SHALL BE INTERPRETED TO BE THE LATEST STANDARDS OF THE ILLINOIS DEPARTMENT OF TRANSPORTATION.
10. UPON COMPLETION OF THIS CONTRACT, THE CONTRACTOR SHALL PROVIDE A COMPLETE SET OF RECORD DRAWINGS TO THE VILLAGE OF OAK LAWN, THE RECORD DRAWINGS SHALL BE COMPLETED IN ACCORDANCE WITH ACCORDING TO SECTION 801.16 OF THE STANDARD SPECIFICATIONS. EXISTING INVENTORY AND CIRCUITING SHALL BE NOTED ON A COPY OF THE CONTRACT DRAWINGS.
11. ALL EXISTING HPS LUMINAIRES WHICH ARE BEING REMOVED SHALL BE SALVAGED TO THE VILLAGE OF OAK LAWN. CONTACT THE PUBLIC WORKS DEPARTMENT TO COORDINATE THE DELIVERY OF THE HPS LUMINAIRES.
12. IDOT DISTRICT ONE MAINTANANCE STAFF SHALL BE NOTIFIED AT LEAST 48 HOURS IN ADVANCE OF REPLACEMENT OF LUMINAIRES THAT ARE ATTACHED TO AN IDOT MAINTAINED COMBINATION TRAFFIC SIGNAL MAST ARMS.
13. ALL LUMINAIRES SHALL BE ORIENTED WITH THE OPTICS PERPENDICULAR TO THE ROADWAY UNLESS NOTED OTHERWISE OR DIRECTED BY THE ENGINEER, THE LUMINAIRES MAY REQUIRE NIGHT-TIME OPTICAL ADJUSTMENT UPON INSPECTION BY THE ENGINEER.
14. SPLICING OF CONDUCTORS SHALL BE IN POLE BASES OR ABOVE-GRADE WEATHER TIGHT JUNCTION BOXES ONLY. SPLICES BELOW GRADE WILL NOT BE PERMITTED.
15. IT SHALL BE THE RESPONSIBILITY OF THE CONTRACTOR TO OBTAIN ANY REQUIRED PERMITS AND COORDINATE WORK IN CLOSE PROXIMITY TO ANY EXISTING AERIAL PRIVATE UTILITY LINES.

MAINTENANCE OF TRAFFIC

GENERAL NOTES

MAINTENANCE OF TRAFFIC PLAN DESCRIBED IS A SUGGESTED GUIDE FOR DIVERSION OF TRAFFIC DURING THE EXECUTION OF THIS CONTRACT. ANY REQUESTED CHANGES TO THE PLAN SHALL BE SUBMITTED TO THE ENGINEER 48 HOURS IN ADVANCE OF ANY IMPLEMENTATION.

THE CONTRACTOR SHALL MAINTAIN ACCESS TO ALL PROPERTIES AND SIDE ROADS DURING CONSTRUCTION OPERATIONS.

AT THE END OF EACH WORK DAY TRAFFIC CONTROL SHALL BE REMOVED AND TRAFFIC RETURNED TO EXISTING OPERATIONS.

THE CONTRACTOR SHALL COORDINATE WORK FOR REPLACEMENT OF LUMINAIRES THAT ARE ATTACHED TO AN IDOT COMBINATION TRAFFIC SIGNAL MAST ARMS SUCH THAT EACH EXISTING TRAFFIC SIGNAL SHALL ONLY BE IMPACTED ONCE.

THE CONTRACTOR SHALL COORDINATE TO ENSURE AT NO TIME SHALL THE ROADWAY BE LEFT UNLIT DURING NIGHT-TIME HOURS.

STAGE 1:

REPLACE EXISTING HPS LUMINAIRES ON EXISTING LIGHT POLES WITH A PROPOSED LED LUMINIAIRE AS NOTED ON THE DRAWINGS ALONG THE SOUTH SIDE OF US 20 (95TH STREET). CLOSE LANES USING STANDARDS 701101-05, 701427-05, 701602-10, 701701-10, AND 701801-06 SUCH THAT WORK TO REPLACE EXISTING LUMINAIRE DOES NOT OCCUR ABOVE ACTIVE LANES.

STAGE 2:

REPLACE EXISTING HPS LUMINAIRES ON EXISTING LIGHT POLES WITH A PROPOSED LED LUMINIAIRE AS NOTED ON THE DRAWINGS ALONG THE NORTH SIDE OF US 20 (95TH STREET). CLOSE LANES USING STANDARDS 701101-05, 701427-05, 701602-10, 701701-10, AND 701801-06 SUCH THAT WORK TO REPLACE EXISTING LUMINAIRE DOES NOT OCCUR ABOVE ACTIVE LANES.

PHASE I COMMITMENTS

NONE.

STATE OF ILLINOIS
DEPARTMENT OF TRANSPORTATION

95TH STREET 69TH AVE./NEW ENGLAND AVE. TO PULASKI AVE.
GENERAL NOTES, INDEX OF SHEETS, AND MOT NOTES

SCALE: SHEET 1 OF 1 SHEETS STA. TO STA.

F.A.P. RTE.	SECTION	COUNTY	TOTAL SHEETS	SHEET NO.
29	24-00198-00-LT	COOK	18	2
			CONTRACT NO. 61M21	
		ILLINOIS		



1170 SOUTH HOUBOLT ROAD
JOLIET, ILLINOIS 60431
(815) 744-4200

USER NAME	= JackD
DESIGNED	- JED
DRAWN	- JMR
CHECKED	- RRS
DATE	- 11/17/2025

REVISED	-
REVISED	-
REVISED	-
REVISED	-

MODEL Default
FILE Name: 301041800-48994801002DrawingsCAD/CAD sheets\801-002_dht_95th-St-General Notes, Index, Standards, MOT.dgn

MODEL: Default
FILE NAME: S:\01\4800-4899\48011002\Drawings\CAD\CAD sheets\4801-002.dwg 95th-St-500.dgn



1170 SOUTH HOBOLT ROAD
JOLIET, ILLINOIS 60431
(815) 744-4200

USER NAME = JackD	DESIGNED - JED	REVISED -
	DRAWN - JMR	REVISED -
PLOT SCALE = 100.0000 ' / in.	CHECKED - RRS	REVISED -
PLOT DATE = 12/11/2025	DATE - 11/17/2025	REVISED -

STATE OF ILLINOIS
DEPARTMENT OF TRANSPORTATION

95TH STREET 69TH AVE./NEW ENGLAND AVE. TO PULASKI AVE.
SUMMARY OF QUANTITIES

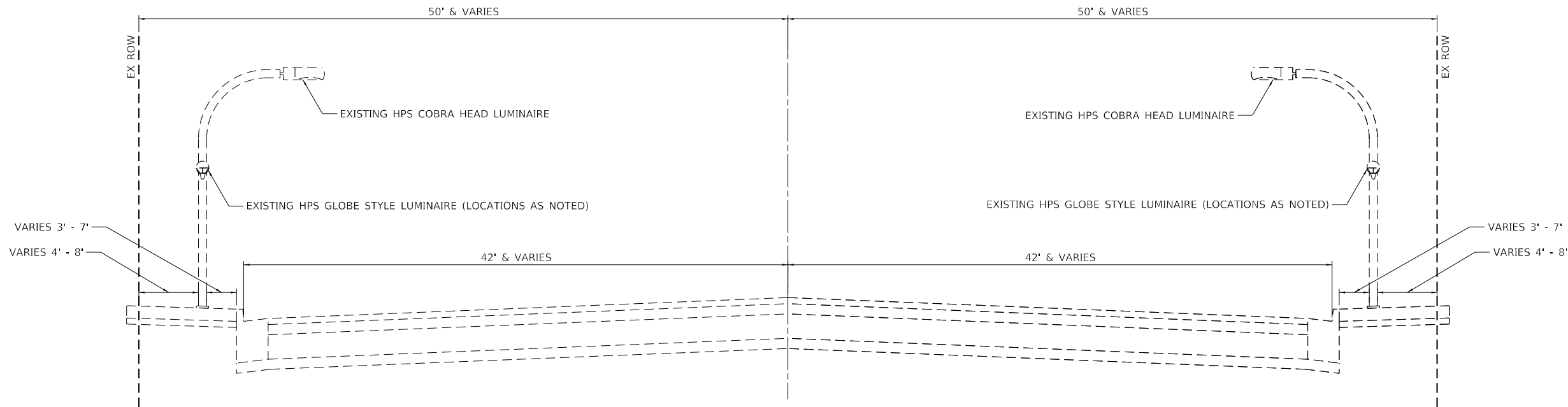
SCALE: SHEET 1 OF 1 SHEETS STA. TO STA.

F.A.P. RTE.	SECTION	COUNTY	TOTAL SHEETS	SHEET NO.
29	24-00198-00-LT	COOK	18	3
CONTRACT NO. 61M21				
ILLINOIS				

CONSTRUCTION CODE
STREET LIGHTING 0021
80% FED. 20% STATE

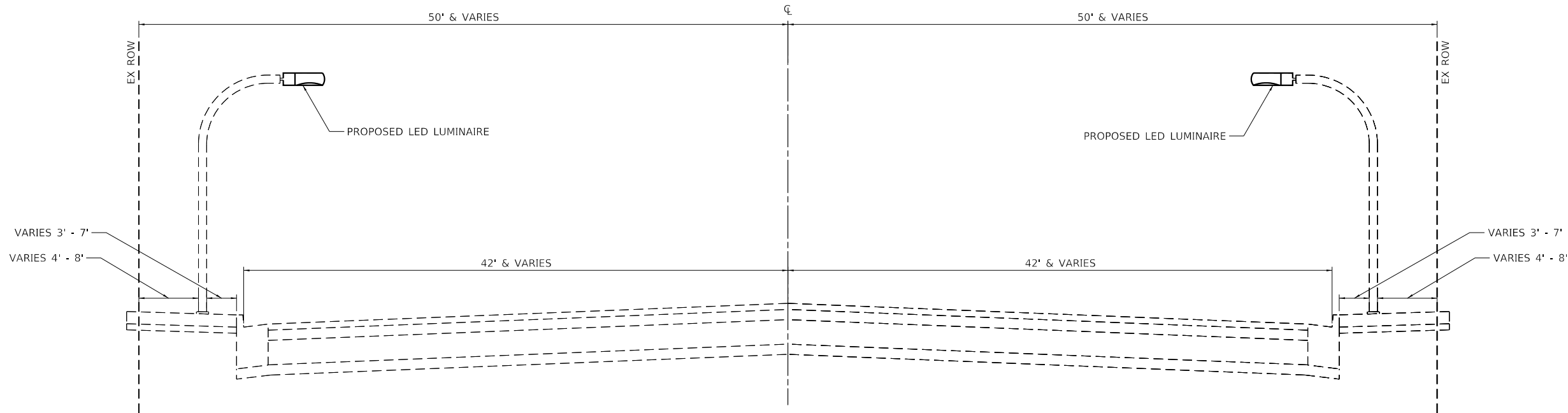
CODE NO.	ITEM	UNIT	TOTAL QUANTITY	URBAN
67100100	MOBILIZATION	L SUM	1	1
70102632	TRAFFIC CONTROL AND PROTECTION, STANDARD 701602	L SUM	1	1
70102635	TRAFFIC CONTROL AND PROTECTION, STANDARD 701701	L SUM	1	1
70102640	TRAFFIC CONTROL AND PROTECTION, STANDARD 701801	L SUM	1	1
82110007	LUMINAIRE, LED, ROADWAY, OUTPUT DESIGNATION G	EACH	4	4
85000200	MAINTENANCE OF EXISTING TRAFFIC SIGNAL INSTALLATION	EACH	4	4
X1400202	LUMINAIRE (SPECIAL)	EACH	8	8
X1400238	LUMINAIRE, LED, SPECIAL	EACH	279	279
X1400267	REMOVAL OF LIGHTING LUMINAIRE, NO SALVAGE	EACH	4	4
X1400341	REMOVAL OF LUMINAIRE, SALVAGE	EACH	20	20
X8000003	MAINTENANCE OF LIGHTING SYSTEM	CAL MO	3	3
X8420104	REMOVAL OF LUMINAIRE, SALVAGE, ROADWAY	EACH	287	287
Z0033020	LUMINAIRE SAFETY CABLE ASSEMBLY	EACH	291	291

* DENOTES SPECIALTY ITEM



EXISTING TYPICAL SECTION

US ROUTE 20 (95TH STREET)
FROM 69TH AVENUE/NEW ENGLAND AVENUE TO 54TH AVENUE &
IL 50 (CICERO AVENUE) TO PULASKI ROAD



PROPOSED TYPICAL SECTION

US ROUTE 20 (95TH STREET)
FROM 69TH AVENUE/NEW ENGLAND AVENUE TO 54TH AVENUE &
IL 50 (CICERO AVENUE) TO PULASKI ROAD

MODEL Default
FILE Name: 301041800-48994801002Drawings\CAD\CAD_sheets\4801-L002_dht_95th-St_Typical Section.dgn



1170 SOUTH HOUBOLT ROAD
JOLIET, ILLINOIS 60431
(815) 744-4200

USER NAME = JackD	DESIGNED - JED	REVISED -
	DRAWN - JMR	REVISED -
PLOT SCALE = 10.0000 ' / in.	CHECKED - RRS	REVISED -
PLOT DATE = 12/11/2025	DATE - 11/17/2025	REVISED -

STATE OF ILLINOIS
DEPARTMENT OF TRANSPORTATION

95TH STREET 69TH AVE./NEW ENGLAND AVE. TO PULASKI AVE.
TYPICAL SECTIONS

SCALE: SHEET 1 OF 1 SHEETS STA. TO STA.

F.A.P. RTE.	SECTION	COUNTY	TOTAL SHEETS	SHEET NO.
29	24-00198-00-LT	COOK	18	4
CONTRACT NO. 61M21				
ILLINOIS				

MODEL Default
FILE Name: 3301041800-48994801002DrawingsCAD/CAD sheets\4801-002_dht_95th-S-02_02042025.dgn



1170 SOUTH HOUBOLT ROAD
JOLIET, ILLINOIS 60431
(815) 744-4200

USER NAME	= JackD
PLOT SCALE	= 100.0000 ' / in.
PLOT DATE	= 12/11/2025

DESIGNED -	JED
DRAWN -	JMR
CHECKED -	AJR
DATE -	11/17/2025

REVISED -	
REVISED -	
REVISED -	
REVISED -	

STATE OF ILLINOIS
DEPARTMENT OF TRANSPORTATION

95TH STREET 69TH AVE./NEW ENGLAND AVE. TO PULASKI AVE.
REMOVAL AND PROPOSED LIGHTING DRAWINGS

SCALE: 1" = 50' SHEET 1 OF 12 SHEETS STA. TO STA.

F.A.P. RTE.	SECTION	COUNTY	TOTAL SHEETS	SHEET NO.
29	24-00198-00-LT	COOK	18	5
CONTRACT NO. 61M21				
ILLINOIS				

LEGEND



EXISTING 6-FT MAST ARM LIGHT POLE EQUIPPED WITH HPS COBRA HEAD STYLE LUMINAIRE. HPS LUMINAIRE TO BE REMOVED AND SALVAGED. PAID FOR AS REMOVAL OF LUMINAIRE, SALVAGE, ROADWAY. INSTALL LED LUMINAIRE AND SAFETY CABLE. PAID FOR AS LUMINAIRE, LED, SPECIAL AND LUMINAIRE SAFETY CABLE ASSEMBLY RESPECTIVELY.



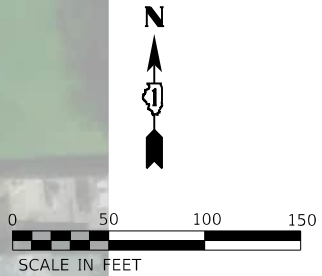
EXISTING 6-FT MAST ARM LIGHT POLE EQUIPPED WITH A COBRA HEAD STYLE AND DUAL GLOBE STYLE HPS LUMINAIRES. COBRA HEAD STYLE AND GLOBE STYLE HPS LUMINAIRE TO BE REMOVED AND SALVAGED. PAID FOR AS REMOVAL OF LUMINAIRE, SALVAGE, ROADWAY AND REMOVAL OF LUMINAIRE, SALVAGE RESPECTIVELY. INSTALL LED LUMINAIRE AND SAFETY CABLE. PAID FOR AS LUMINAIRE, LED, SPECIAL AND LUMINAIRE SAFETY CABLE ASSEMBLY RESPECTIVELY.



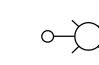
EXISTING COMBINATION MAST ARM ASSEMBLY AND POLE WITH 15-FT LIGHTING ARM, EQUIPPED WITH HPS COBRA HEAD STYLE LUMINAIRE. HPS LUMINAIRE TO BE REMOVED AND SALVAGED. PAID FOR AS REMOVAL OF LUMINAIRE, SALVAGE, ROADWAY. INSTALL LED LUMINAIRE AND SAFETY CABLE. PAID FOR AS LUMINAIRE, LED, SPECIAL AND LUMINAIRE SAFETY CABLE ASSEMBLY RESPECTIVELY.

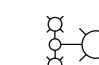


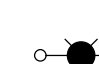
EXISTING 15-FT MAST ARM LIGHT POLE, EQUIPPED WITH HPS COBRA HEAD STYLE LUMINAIRE. HPS LUMINAIRE TO BE REMOVED AND SALVAGED. PAID FOR AS REMOVAL OF LUMINAIRE, SALVAGE, ROADWAY. INSTALL LED LUMINAIRE AND SAFETY CABLE. PAID FOR AS LUMINAIRE, LED, SPECIAL AND LUMINAIRE SAFETY CABLE ASSEMBLY RESPECTIVELY.

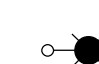


LEGEND

- 

EXISTING 6-FT MAST ARM LIGHT POLE EQUIPPED WITH HPS COBRA HEAD STYLE LUMINAIRE. HPS LUMINAIRE TO BE REMOVED AND SALVAGED. PAID FOR AS REMOVAL OF LUMINAIRE, SALVAGE, ROADWAY. INSTALL LED LUMINAIRE AND SAFETY CABLE. PAID FOR AS LUMINAIRE, LED, SPECIAL AND LUMINAIRE SAFETY CABLE ASSEMBLY RESPECTIVELY.
- 

EXISTING 6-FT MAST ARM LIGHT POLE EQUIPPED WITH A COBRA HEAD STYLE AND DUAL GLOBE STYLE HPS LUMINAIRES. COBRA HEAD STYLE AND GLOBE STYLE HPS LUMINAIRE TO BE REMOVED AND SALVAGED. PAID FOR AS REMOVAL OF LUMINAIRE, SALVAGE, ROADWAY AND REMOVAL OF LUMINAIRE, SALVAGE RESPECTIVELY. INSTALL LED LUMINAIRE AND SAFETY CABLE. PAID FOR AS LUMINAIRE, LED, SPECIAL AND LUMINAIRE SAFETY CABLE ASSEMBLY RESPECTIVELY.
- 

EXISTING COMBINATION MAST ARM ASSEMBLY AND POLE WITH 15-FT LIGHTING ARM, EQUIPPED WITH HPS COBRA HEAD STYLE LUMINAIRE. HPS LUMINAIRE TO BE REMOVED AND SALVAGED. PAID FOR AS REMOVAL OF LUMINAIRE, SALVAGE, ROADWAY. INSTALL LED LUMINAIRE AND SAFETY CABLE. PAID FOR AS LUMINAIRE, LED, SPECIAL AND LUMINAIRE SAFETY CABLE ASSEMBLY RESPECTIVELY.
- 

EXISTING 15-FT MAST ARM LIGHT POLE, EQUIPPED WITH HPS COBRA HEAD STYLE LUMINAIRE. HPS LUMINAIRE TO BE REMOVED AND SALVAGED. PAID FOR AS REMOVAL OF LUMINAIRE, SALVAGE, ROADWAY. INSTALL LED LUMINAIRE AND SAFETY CABLE. PAID FOR AS LUMINAIRE, LED, SPECIAL AND LUMINAIRE SAFETY CABLE ASSEMBLY RESPECTIVELY.



NOTES

1. A QUANTITY OF 1 EACH FOR MAINTENANCE OF EXISTING TRAFFIC SIGNAL HAS BEEN INCLUDED FOR THE INTERSECTION OF OAK PARK AVENUE AND US 20 (95TH STREET) (TS 510).

MODEL: Default
FILE NAME: 33\\CULU800-4899\\8011002\\Drawings\\CAD\\CAD_sheets\\801-002_dht_95th-5t-03_02012025.dgn



1170 SOUTH HOUBOLT ROAD
JOLIET, ILLINOIS 60431
STRAND
ASSOCIATES®
(815) 744-4200

USER NAME = JackD	DESIGNED - JED	REVISED -
	DRAWN - JMR	REVISED -
PLOT SCALE = 100,0000 ' / in.	CHECKED - AJR	REVISED -
PLOT DATE = 12/11/2025	DATE - 11/17/2025	REVISED -

STATE OF ILLINOIS
DEPARTMENT OF TRANSPORTATION

95TH STREET 69TH AVE./NEW ENGLAND AVE. TO PULASKI AVE.
REMOVAL AND PROPOSED LIGHTING DRAWINGS

SCALE: 1" = 50' SHEET 2 OF 12 SHEETS STA. TO STA.

F.A.P. RTE.	SECTION	COUNTY	TOTAL SHEETS	SHEET NO.
29	24-00198-00-LT	COOK	18	6
CONTRACT NO. 61M21				
ILLINOIS				

MODEL Default
FILE NAME: S:\04\1800-4899\8001002\Drawings\CADD\CD sheets\801-L002_dht_95th-5c-04_02012025.dgn



1170 SOUTH HOUBOLT ROAD
JOLIET, ILLINOIS 60431
(815) 744-4200

USER NAME	= JackD
PLOT SCALE	= 100.0000 ' / in.
PLOT DATE	= 12/11/2025

DESIGNED	- JED
DRAWN	- JMR
CHECKED	- AJR
DATE	- 11/17/2025

REVISED	-
REVISED	-
REVISED	-
REVISED	-

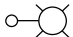
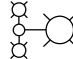


STATE OF ILLINOIS
DEPARTMENT OF TRANSPORTATION

95TH STREET 69TH AVE./NEW ENGLAND AVE. TO PULASKI AVE.
REMOVAL AND PROPOSED LIGHTING DRAWINGS

SCALE: 1" = 50' SHEET 3 OF 12 SHEETS STA. TO STA.

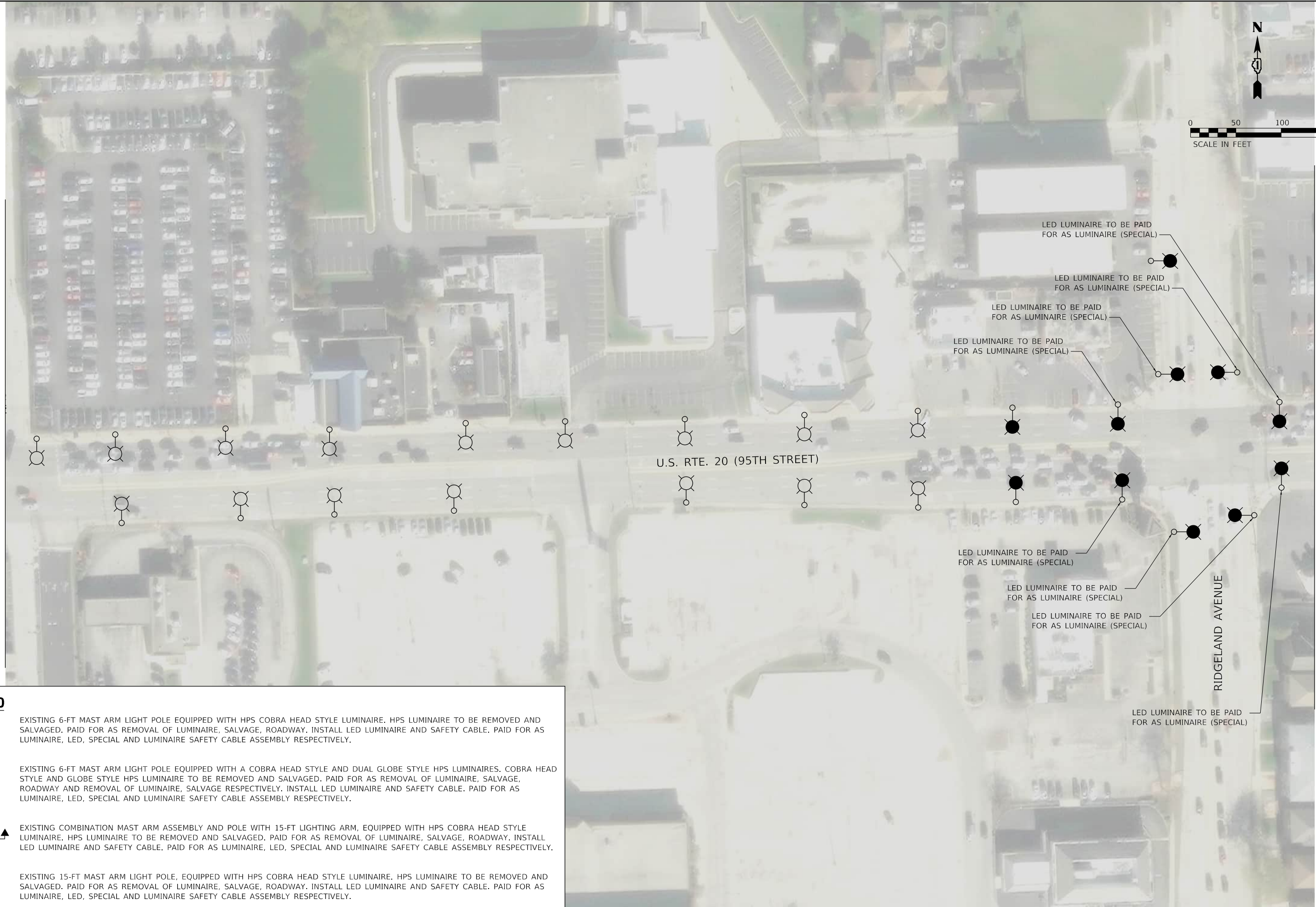
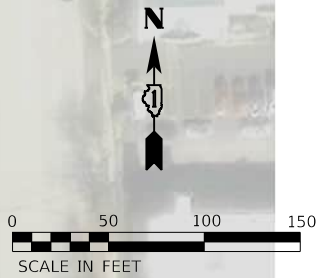
F.A.P. RTE.	SECTION	COUNTY	TOTAL SHEETS	SHEET NO.
29	24-00198-00-LT	COOK	18	7
CONTRACT NO. 61M21				
ILLINOIS				

LEGEND

-  EXISTING 6-FT MAST ARM LIGHT POLE EQUIPPED WITH HPS COBRA HEAD STYLE LUMINAIRE. HPS LUMINAIRE TO BE REMOVED AND SALVAGED. PAID FOR AS REMOVAL OF LUMINAIRE, SALVAGE, ROADWAY. INSTALL LED LUMINAIRE AND SAFETY CABLE. PAID FOR AS LUMINAIRE, LED, SPECIAL AND LUMINAIRE SAFETY CABLE ASSEMBLY RESPECTIVELY.
-  EXISTING 6-FT MAST ARM LIGHT POLE EQUIPPED WITH A COBRA HEAD STYLE AND DUAL GLOBE STYLE HPS LUMINAIRES. COBRA HEAD STYLE AND GLOBE STYLE HPS LUMINAIRE TO BE REMOVED AND SALVAGED. PAID FOR AS REMOVAL OF LUMINAIRE, SALVAGE, ROADWAY AND REMOVAL OF LUMINAIRE, SALVAGE RESPECTIVELY. INSTALL LED LUMINAIRE AND SAFETY CABLE. PAID FOR AS LUMINAIRE, LED, SPECIAL AND LUMINAIRE SAFETY CABLE ASSEMBLY RESPECTIVELY.
-  EXISTING COMBINATION MAST ARM ASSEMBLY AND POLE WITH 15-FT LIGHTING ARM, EQUIPPED WITH HPS COBRA HEAD STYLE LUMINAIRE. HPS LUMINAIRE TO BE REMOVED AND SALVAGED. PAID FOR AS REMOVAL OF LUMINAIRE, SALVAGE, ROADWAY. INSTALL LED LUMINAIRE AND SAFETY CABLE. PAID FOR AS LUMINAIRE, LED, SPECIAL AND LUMINAIRE SAFETY CABLE ASSEMBLY RESPECTIVELY.
-  EXISTING 15-FT MAST ARM LIGHT POLE, EQUIPPED WITH HPS COBRA HEAD STYLE LUMINAIRE. HPS LUMINAIRE TO BE REMOVED AND SALVAGED. PAID FOR AS REMOVAL OF LUMINAIRE, SALVAGE, ROADWAY. INSTALL LED LUMINAIRE AND SAFETY CABLE. PAID FOR AS LUMINAIRE, LED, SPECIAL AND LUMINAIRE SAFETY CABLE ASSEMBLY RESPECTIVELY.

MATCH LINE B

MATCH LINE C



LEGEND



EXISTING 6-FT MAST ARM LIGHT POLE EQUIPPED WITH HPS COBRA HEAD STYLE LUMINAIRE. HPS LUMINAIRE TO BE REMOVED AND SALVAGED. PAID FOR AS REMOVAL OF LUMINAIRE, SALVAGE, ROADWAY. INSTALL LED LUMINAIRE AND SAFETY CABLE. PAID FOR AS LUMINAIRE, LED, SPECIAL AND LUMINAIRE SAFETY CABLE ASSEMBLY RESPECTIVELY.



EXISTING 6-FT MAST ARM LIGHT POLE EQUIPPED WITH A COBRA HEAD STYLE AND DUAL GLOBE STYLE HPS LUMINAIRES. COBRA HEAD STYLE AND GLOBE STYLE HPS LUMINAIRE TO BE REMOVED AND SALVAGED. PAID FOR AS REMOVAL OF LUMINAIRE, SALVAGE, ROADWAY AND REMOVAL OF LUMINAIRE, SALVAGE RESPECTIVELY. INSTALL LED LUMINAIRE AND SAFETY CABLE. PAID FOR AS LUMINAIRE, LED, SPECIAL AND LUMINAIRE SAFETY CABLE ASSEMBLY RESPECTIVELY.



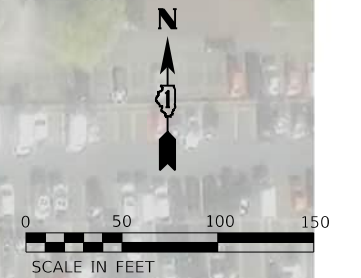
EXISTING COMBINATION MAST ARM ASSEMBLY AND POLE WITH 15-FT LIGHTING ARM, EQUIPPED WITH HPS COBRA HEAD STYLE LUMINAIRE. HPS LUMINAIRE TO BE REMOVED AND SALVAGED. PAID FOR AS REMOVAL OF LUMINAIRE, SALVAGE, ROADWAY. INSTALL LED LUMINAIRE AND SAFETY CABLE. PAID FOR AS LUMINAIRE, LED, SPECIAL AND LUMINAIRE SAFETY CABLE ASSEMBLY RESPECTIVELY.



EXISTING 15-FT MAST ARM LIGHT POLE, EQUIPPED WITH HPS COBRA HEAD STYLE LUMINAIRE. HPS LUMINAIRE TO BE REMOVED AND SALVAGED. PAID FOR AS REMOVAL OF LUMINAIRE, SALVAGE, ROADWAY. INSTALL LED LUMINAIRE AND SAFETY CABLE. PAID FOR AS LUMINAIRE, LED, SPECIAL AND LUMINAIRE SAFETY CABLE ASSEMBLY RESPECTIVELY.



EXISTING 6-FT MAST ARM LIGHT POLE EQUIPPED WITH HPS COBRA HEAD STYLE LUMINAIRE AND TRAFFIC SIGNAL HEADS. HPS LUMINAIRE TO BE REMOVED AND SALVAGED. PAID FOR AS REMOVAL OF LUMINAIRE, SALVAGE, ROADWAY. INSTALL LED LUMINAIRE AND SAFETY CABLE. PAID FOR AS LUMINAIRE, LED, SPECIAL AND LUMINAIRE SAFETY CABLE ASSEMBLY RESPECTIVELY.



MATCH LINE C

MATCH LINE D

NOTES

1. A QUANTITY OF 1 EACH FOR MAINTENANCE OF EXISTING TRAFFIC SIGNAL HAS BEEN INCLUDED FOR THE INTERSECTION OF MELVINIA AVENUE AND US 20 (95TH STREET) (TS 515).



1170 SOUTH HOUBOLT ROAD
JOLIET, ILLINOIS 60431
(815) 744-4200

USER NAME	= JackD
-----------	---------

--	--

PLOT SCALE = 100.0000 ' / in.

PLOT DATE	= 12/11/2025
-----------	--------------

DESIGNED - IED

DRAWN - JMR

CHECKED - AJR

DATE	-	11/17/2025
------	---	------------

REVISÉ -

REVISED -

REVISÉ -

REVISED -

STATE OF ILLINOIS
DEPARTMENT OF TRANSPORTATION

95TH STREET 69TH AVE./NEW ENGLAND AVE. TO PULASKI AVE.
REMOVAL AND PROPOSED LIGHTING DRAWINGS

SCALE: 1" = 50'	SHEET 4 OF 12 SHEETS	STA.	TO STA.
-----------------	----------------------	------	---------

F.A.P. RTE.
29

SECTION
24-00198-00-LT

COUNTY	TOTAL SHEETS	SHEET NO.
COOK	18	8

CONTRACT NO. 61M21

ILLINOIS

LEGEND



EXISTING 6-FT MAST ARM LIGHT POLE EQUIPPED WITH HPS COBRA HEAD STYLE LUMINAIRE. HPS LUMINAIRE TO BE REMOVED AND SALVAGED. PAID FOR AS REMOVAL OF LUMINAIRE, SALVAGE, ROADWAY. INSTALL LED LUMINAIRE AND SAFETY CABLE. PAID FOR AS LUMINAIRE, LED, SPECIAL AND LUMINAIRE SAFETY CABLE ASSEMBLY RESPECTIVELY.



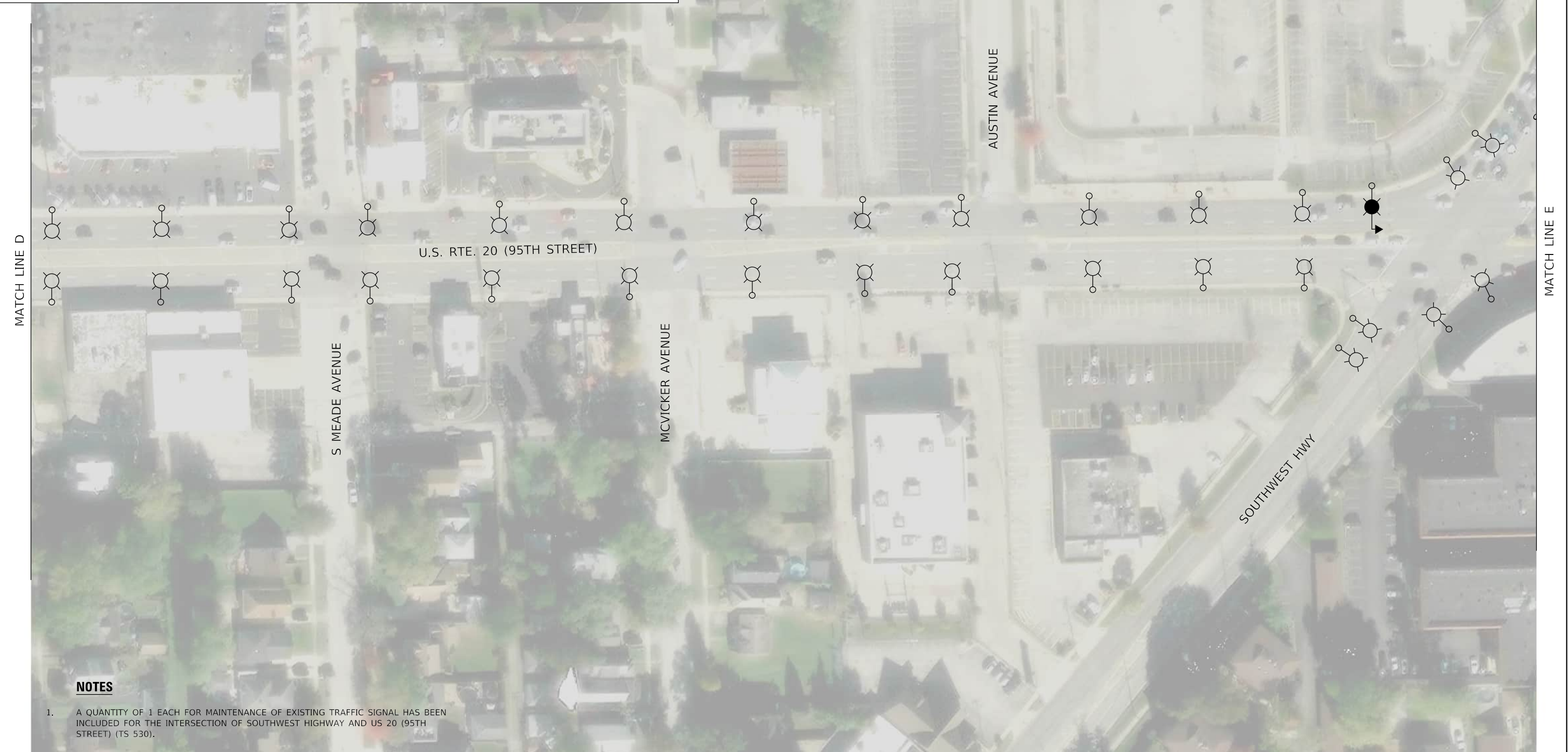
EXISTING 6-FT MAST ARM LIGHT POLE EQUIPPED WITH A COBRA HEAD STYLE AND DUAL GLOBE STYLE HPS LUMINAIRES. COBRA HEAD STYLE AND GLOBE STYLE HPS LUMINAIRE TO BE REMOVED AND SALVAGED. PAID FOR AS REMOVAL OF LUMINAIRE, SALVAGE, ROADWAY AND REMOVAL OF LUMINAIRE, SALVAGE RESPECTIVELY. INSTALL LED LUMINAIRE AND SAFETY CABLE. PAID FOR AS LUMINAIRE, LED, SPECIAL AND LUMINAIRE SAFETY CABLE ASSEMBLY RESPECTIVELY.



EXISTING COMBINATION MAST ARM ASSEMBLY AND POLE WITH 15-FT LIGHTING ARM, EQUIPPED WITH HPS COBRA HEAD STYLE LUMINAIRE. HPS LUMINAIRE TO BE REMOVED AND SALVAGED. PAID FOR AS REMOVAL OF LUMINAIRE, SALVAGE, ROADWAY. INSTALL LED LUMINAIRE AND SAFETY CABLE. PAID FOR AS LUMINAIRE, LED, SPECIAL AND LUMINAIRE SAFETY CABLE ASSEMBLY RESPECTIVELY.



EXISTING 15-FT MAST ARM LIGHT POLE, EQUIPPED WITH HPS COBRA HEAD STYLE LUMINAIRE. HPS LUMINAIRE TO BE REMOVED AND SALVAGED. PAID FOR AS REMOVAL OF LUMINAIRE, SALVAGE, ROADWAY. INSTALL LED LUMINAIRE AND SAFETY CABLE. PAID FOR AS LUMINAIRE, LED, SPECIAL AND LUMINAIRE SAFETY CABLE ASSEMBLY RESPECTIVELY.



NOTES

1. A QUANTITY OF 1 EACH FOR MAINTENANCE OF EXISTING TRAFFIC SIGNAL HAS BEEN INCLUDED FOR THE INTERSECTION OF SOUTHWEST HIGHWAY AND US 20 (95TH STREET) (TS 530).



USER NAME = JackD	DESIGNED - JED	REVISED -
	DRAWN - JMR	REVISED -
PLOT SCALE = 100,000.0' / in.	CHECKED - AJR	REVISED -
PLOT DATE = 12/11/2025	DATE = 11/17/2025	REVISED -

STATE OF ILLINOIS
DEPARTMENT OF TRANSPORTATION

95TH STREET 69TH AVE./NEW ENGLAND AVE. TO PULASKI AVE.
REMOVAL AND PROPOSED LIGHTING DRAWINGS

SCALE: 1" = 50'	SHEET 5 OF 12 SHEETS	STA.	TO STA.
-----------------	----------------------	------	---------

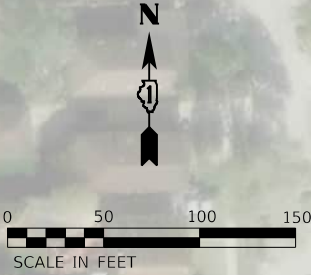
F.A.P. RTE.	SECTION	COUNTY	TOTAL SHEETS	SHEET NO.
29	24-00198-00-LT	COOK	18	9
		CONTRACT NO. 61M21		
ILLINOIS				

EXISTING 6-FT MAST ARM LIGHT POLE EQUIPPED WITH HPS COBRA HEAD STYLE LUMINAIRE. HPS LUMINAIRE TO BE REMOVED AND SALVAGED. PAID FOR AS REMOVAL OF LUMINAIRE, SALVAGE, ROADWAY. INSTALL LED LUMINAIRE AND SAFETY CABLE. PAID FOR AS LUMINAIRE, LED, SPECIAL AND LUMINAIRE SAFETY CABLE ASSEMBLY RESPECTIVELY.

EXISTING 6-FT MAST ARM LIGHT POLE EQUIPPED WITH A COBRA HEAD STYLE AND DUAL GLOBE STYLE HPS LUMINAIRES. COBRA HEAD STYLE AND GLOBE STYLE HPS LUMINAIRE TO BE REMOVED AND SALVAGED. PAID FOR AS REMOVAL OF LUMINAIRE, SALVAGE, ROADWAY AND REMOVAL OF LUMINAIRE, SALVAGE RESPECTIVELY. INSTALL LED LUMINAIRE AND SAFETY CABLE. PAID FOR AS LUMINAIRE, LED, SPECIAL AND LUMINAIRE SAFETY CABLE ASSEMBLY RESPECTIVELY.

EXISTING COMBINATION MAST ARM ASSEMBLY AND POLE WITH 15-FT LIGHTING ARM, EQUIPPED WITH HPS COBRA HEAD STYLE LUMINAIRE. HPS LUMINAIRE TO BE REMOVED AND SALVAGED. PAID FOR AS REMOVAL OF LUMINAIRE, SALVAGE, ROADWAY. INSTALL LED LUMINAIRE AND SAFETY CABLE. PAID FOR AS LUMINAIRE, LED, SPECIAL AND LUMINAIRE SAFETY CABLE ASSEMBLY RESPECTIVELY.

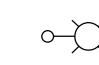
EXISTING 15-FT MAST ARM LIGHT POLE, EQUIPPED WITH HPS COBRA HEAD STYLE LUMINAIRE. HPS LUMINAIRE TO BE REMOVED AND SALVAGED. PAID FOR AS REMOVAL OF LUMINAIRE, SALVAGE, ROADWAY. INSTALL LED LUMINAIRE AND SAFETY CABLE. PAID FOR AS LUMINAIRE, LED, SPECIAL AND LUMINAIRE SAFETY CABLE ASSEMBLY RESPECTIVELY.

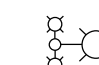


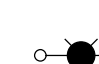
MODEL: Default
FILE: \\pwr01-30\JUL1800-4899\8011002\Drawings\CADD\CAD_sheets\801-002_dht_95th-5c-07_02012025.dgn

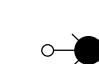
<div><div></div><div>1170 SOUTH HOUBOLT ROAD JOLIET, ILLINOIS 60431 (815) 744-4200</div><div>STRAND ASSOCIATES®</div></div>	USER NAME = JackD		DESIGNED - JED	REVISED -	STATE OF ILLINOIS DEPARTMENT OF TRANSPORTATION	95TH STREET 69TH AVE./NEW ENGLAND AVE. TO PULASKI AVE. REMOVAL AND PROPOSED LIGHTING DRAWINGS				F.A.P. RTE.	SECTION	COUNTY	TOTAL SHEETS	SHEET NO.
	PLOT SCALE = 100.0000 ' / in.		CHECKED - AJR	REVISED -		29	24-00198-00-LT	COOK	18	10				
	PLOT DATE = 12/11/2025		DATE - 11/17/2025	REVISED -		CONTRACT NO. 61M21								
						ILLINOIS								
					SCALE: 1" = 50'	SHEET 6 OF 12 SHEETS	STA.	TO STA.						

LEGEND

- 

EXISTING 6-FT MAST ARM LIGHT POLE EQUIPPED WITH HPS COBRA HEAD STYLE LUMINAIRE. HPS LUMINAIRE TO BE REMOVED AND SALVAGED. PAID FOR AS REMOVAL OF LUMINAIRE, SALVAGE, ROADWAY. INSTALL LED LUMINAIRE AND SAFETY CABLE. PAID FOR AS LUMINAIRE, LED, SPECIAL AND LUMINAIRE SAFETY CABLE ASSEMBLY RESPECTIVELY.
- 

EXISTING 6-FT MAST ARM LIGHT POLE EQUIPPED WITH A COBRA HEAD STYLE AND DUAL GLOBE STYLE HPS LUMINAIRES. COBRA HEAD STYLE AND GLOBE STYLE HPS LUMINAIRE TO BE REMOVED AND SALVAGED. PAID FOR AS REMOVAL OF LUMINAIRE, SALVAGE, ROADWAY AND REMOVAL OF LUMINAIRE, SALVAGE RESPECTIVELY. INSTALL LED LUMINAIRE AND SAFETY CABLE. PAID FOR AS LUMINAIRE, LED, SPECIAL AND LUMINAIRE SAFETY CABLE ASSEMBLY RESPECTIVELY.
- 

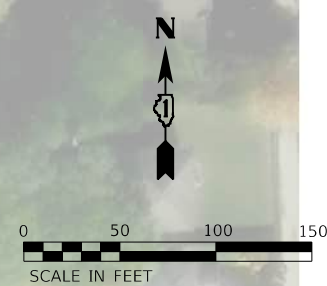
EXISTING COMBINATION MAST ARM ASSEMBLY AND POLE WITH 15-FT LIGHTING ARM, EQUIPPED WITH HPS COBRA HEAD STYLE LUMINAIRE. HPS LUMINAIRE TO BE REMOVED AND SALVAGED. PAID FOR AS REMOVAL OF LUMINAIRE, SALVAGE, ROADWAY. INSTALL LED LUMINAIRE AND SAFETY CABLE. PAID FOR AS LUMINAIRE, LED, SPECIAL AND LUMINAIRE SAFETY CABLE ASSEMBLY RESPECTIVELY.
- 

EXISTING 15-FT MAST ARM LIGHT POLE, EQUIPPED WITH HPS COBRA HEAD STYLE LUMINAIRE. HPS LUMINAIRE TO BE REMOVED AND SALVAGED. PAID FOR AS REMOVAL OF LUMINAIRE, SALVAGE, ROADWAY. INSTALL LED LUMINAIRE AND SAFETY CABLE. PAID FOR AS LUMINAIRE, LED, SPECIAL AND LUMINAIRE SAFETY CABLE ASSEMBLY RESPECTIVELY.

MATCH LINE F



MATCH LINE G



MODEL Default
FILE Name: S:\JULI800-4899\801002\Drawings\CADD\CD sheets\801-002_dht_95th-55-08_02012025.dgn



1170 SOUTH HOUBOLT ROAD
JOLIET, ILLINOIS 60431
(815) 744-4200

USER NAME = JackD	DESIGNED - JED	REVISED -
	DRAWN - JMR	REVISED -
PLOT SCALE = 100.0000 ' / in.	CHECKED - AJR	REVISED -
PLOT DATE = 12/11/2025	DATE - 11/17/2025	REVISED -

STATE OF ILLINOIS
DEPARTMENT OF TRANSPORTATION

95TH STREET 69TH AVE./NEW ENGLAND AVE. TO PULASKI AVE.
REMOVAL AND PROPOSED LIGHTING DRAWINGS

F.A.P. RTE. 29	SECTION 24-00198-00-LT	COUNTY COOK	TOTAL SHEETS 18	SHEET NO. 11
ILLINOIS			CONTRACT NO. 61M21	

SCALE: 1" = 50'	SHEET 7 OF 12 SHEETS	STA. TO STA.
-----------------	----------------------	--------------

MODEL: Default
FILE: \\nwrp-30\OLU\800-4899\8001002\Drawings\CADD\CD sheets\801-002_dht_95th-St-09_02012025.dgn



1170 SOUTH HOUBOLT ROAD
JOLIET, ILLINOIS 60431
(815) 744-4200

USER NAME	= JackD
DESIGNED	- JED
DRAWN	- JMR
PLOT SCALE	= 100.0000 ' / in.
PLOT DATE	= 12/11/2025

REVIS	-
REVIS	-
CHECKED	- AJR
DATE	- 11/17/2025
REVIS	-

STATE OF ILLINOIS
DEPARTMENT OF TRANSPORTATION

95TH STREET 69TH AVE./NEW ENGLAND AVE. TO PULASKI AVE.
REMOVAL AND PROPOSED LIGHTING DRAWINGS

SCALE: 1" = 50' SHEET 8 OF 12 SHEETS STA. TO STA.

F.A.P. RTE.	SECTION	COUNTY	TOTAL SHEETS	SHEET NO.
29	24-00198-00-LT	COOK	18	12
CONTRACT NO. 61M21				
ILLINOIS				

MATCH LINE G



LEGEND



EXISTING 6-FT MAST ARM LIGHT POLE EQUIPPED WITH HPS COBRA HEAD STYLE LUMINAIRE. HPS LUMINAIRE TO BE REMOVED AND SALVAGED. PAID FOR AS REMOVAL OF LUMINAIRE, SALVAGE, ROADWAY. INSTALL LED LUMINAIRE AND SAFETY CABLE. PAID FOR AS LUMINAIRE, LED, SPECIAL AND LUMINAIRE SAFETY CABLE ASSEMBLY RESPECTIVELY.



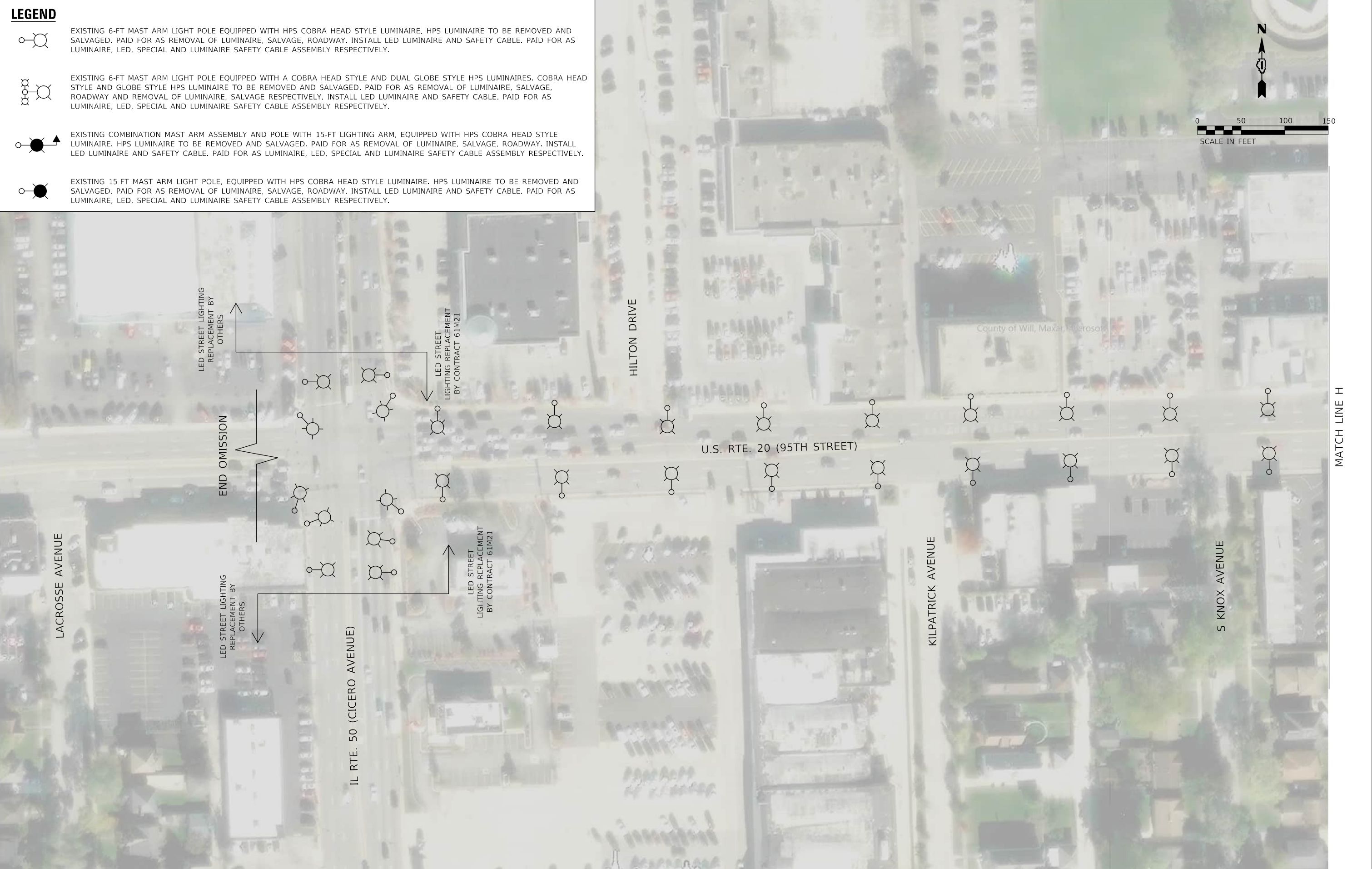
EXISTING 6-FT MAST ARM LIGHT POLE EQUIPPED WITH A COBRA HEAD STYLE AND DUAL GLOBE STYLE HPS LUMINAIRES, COBRA HEAD STYLE AND GLOBE STYLE HPS LUMINAIRE TO BE REMOVED AND SALVAGED. PAID FOR AS REMOVAL OF LUMINAIRE, SALVAGE, ROADWAY AND REMOVAL OF LUMINAIRE, SALVAGE RESPECTIVELY. INSTALL LED LUMINAIRE AND SAFETY CABLE. PAID FOR AS LUMINAIRE, LED, SPECIAL AND LUMINAIRE SAFETY CABLE ASSEMBLY RESPECTIVELY.



EXISTING COMBINATION MAST ARM ASSEMBLY AND POLE WITH 15-FT LIGHTING ARM, EQUIPPED WITH HPS COBRA HEAD STYLE LUMINAIRE. HPS LUMINAIRE TO BE REMOVED AND SALVAGED. PAID FOR AS REMOVAL OF LUMINAIRE, SALVAGE, ROADWAY. INSTALL LED LUMINAIRE AND SAFETY CABLE. PAID FOR AS LUMINAIRE, LED, SPECIAL AND LUMINAIRE SAFETY CABLE ASSEMBLY RESPECTIVELY.



EXISTING 15-FT MAST ARM LIGHT POLE, EQUIPPED WITH HPS COBRA HEAD STYLE LUMINAIRE. HPS LUMINAIRE TO BE REMOVED AND SALVAGED. PAID FOR AS REMOVAL OF LUMINAIRE, SALVAGE, ROADWAY. INSTALL LED LUMINAIRE AND SAFETY CABLE. PAID FOR AS LUMINAIRE, LED, SPECIAL AND LUMINAIRE SAFETY CABLE ASSEMBLY RESPECTIVELY.



LEGEND


EXISTING 6-FT MAST ARM LIGHT POLE EQUIPPED WITH HPS COBRA HEAD STYLE LUMINAIRE. HPS LUMINAIRE TO BE REMOVED AND SALVAGED. PAID FOR AS REMOVAL OF LUMINAIRE, SALVAGE, ROADWAY. INSTALL LED LUMINAIRE AND SAFETY CABLE. PAID FOR AS LUMINAIRE, LED, SPECIAL AND LUMINAIRE SAFETY CABLE ASSEMBLY RESPECTIVELY.

EXISTING 6-FT MAST ARM LIGHT POLE EQUIPPED WITH A COBRA HEAD STYLE AND DUAL GLOBE STYLE HPS LUMINAIRES. COBRA HEAD STYLE AND GLOBE STYLE HPS LUMINAIRE TO BE REMOVED AND SALVAGED. PAID FOR AS REMOVAL OF LUMINAIRE, SALVAGE, ROADWAY AND REMOVAL OF LUMINAIRE, SALVAGE RESPECTIVELY. INSTALL LED LUMINAIRE AND SAFETY CABLE. PAID FOR AS LUMINAIRE, LED, SPECIAL AND LUMINAIRE SAFETY CABLE ASSEMBLY RESPECTIVELY.

EXISTING COMBINATION MAST ARM ASSEMBLY AND POLE WITH 15-FT LIGHTING ARM, EQUIPPED WITH HPS COBRA HEAD STYLE LUMINAIRE. HPS LUMINAIRE TO BE REMOVED AND SALVAGED. PAID FOR AS REMOVAL OF LUMINAIRE, SALVAGE, ROADWAY. INSTALL LED LUMINAIRE AND SAFETY CABLE. PAID FOR AS LUMINAIRE, LED, SPECIAL AND LUMINAIRE SAFETY CABLE ASSEMBLY RESPECTIVELY.

EXISTING 15-FT MAST ARM LIGHT POLE, EQUIPPED WITH HPS COBRA HEAD STYLE LUMINAIRE. HPS LUMINAIRE TO BE REMOVED AND SALVAGED. PAID FOR AS REMOVAL OF LUMINAIRE, SALVAGE, ROADWAY. INSTALL LED LUMINAIRE AND SAFETY CABLE. PAID FOR AS LUMINAIRE, LED, SPECIAL AND LUMINAIRE SAFETY CABLE ASSEMBLY RESPECTIVELY.

MODEL: Default
FILE: \\wms01\301\014800-4899\4801002\Drawings\CAD\CAD_sheets\4801-002_gh_95th-5c-10_02042025.dgn

<div><div></div><div>1170 SOUTH HOUBOLT ROAD JOLIET, ILLINOIS 60431 (815) 744-4200</div><div>STRAND ASSOCIATES®</div></div>	USER NAME = JackD		DESIGNED - JED	REVISED -	STATE OF ILLINOIS DEPARTMENT OF TRANSPORTATION	95TH STREET 69TH AVE./NEW ENGLAND AVE. TO PULASKI AVE. REMOVAL AND PROPOSED LIGHTING DRAWINGS				F.A.P. RTE.	SECTION	COUNTY	TOTAL SHEETS	SHEET NO.
	PLOT SCALE = 100,0000 ' / in.		DRAWN - JMR	REVISED -						29	24-00198-00-LT	COOK	18	13
	CHECKED - AJR		DATE - 11/17/2025	REVISED -						CONTRACT NO. 61M21				
	PLOT DATE = 12/11/2025													
SCALE: 1" = 50'						SHEET 9 OF 12 SHEETS		STA. TO STA.		ILLINOIS				
										CONTRACT NO. 61M21				

LEGEND



EXISTING 6-FT MAST ARM LIGHT POLE EQUIPPED WITH HPS COBRA HEAD STYLE LUMINAIRE. HPS LUMINAIRE TO BE REMOVED AND SALVAGED. PAID FOR AS REMOVAL OF LUMINAIRE, SALVAGE, ROADWAY. INSTALL LED LUMINAIRE AND SAFETY CABLE. PAID FOR AS LUMINAIRE, LED, SPECIAL AND LUMINAIRE SAFETY CABLE ASSEMBLY RESPECTIVELY.



EXISTING 6-FT MAST ARM LIGHT POLE EQUIPPED WITH A COBRA HEAD STYLE AND DUAL GLOBE STYLE HPS LUMINAIRES. COBRA HEAD STYLE AND GLOBE STYLE HPS LUMINAIRE TO BE REMOVED AND SALVAGED. PAID FOR AS REMOVAL OF LUMINAIRE, SALVAGE, ROADWAY AND REMOVAL OF LUMINAIRE, SALVAGE RESPECTIVELY. INSTALL LED LUMINAIRE AND SAFETY CABLE. PAID FOR AS LUMINAIRE, LED, SPECIAL AND LUMINAIRE SAFETY CABLE ASSEMBLY RESPECTIVELY.



EXISTING COMBINATION MAST ARM ASSEMBLY AND POLE WITH 15-FT LIGHTING ARM, EQUIPPED WITH HPS COBRA HEAD STYLE LUMINAIRE. HPS LUMINAIRE TO BE REMOVED AND SALVAGED. PAID FOR AS REMOVAL OF LUMINAIRE, SALVAGE, ROADWAY. INSTALL LED LUMINAIRE AND SAFETY CABLE. PAID FOR AS LUMINAIRE, LED, SPECIAL AND LUMINAIRE SAFETY CABLE ASSEMBLY RESPECTIVELY.



EXISTING 15-FT MAST ARM HIGH POLE, EQUIPPED WITH HPS COBRA HEAD STYLE LUMINAIRE. HPS LUMINAIRE TO BE REMOVED AND SALVAGED. PAID FOR AS REMOVAL OF LUMINAIRE, SALVAGE, ROADWAY. INSTALL LED LUMINAIRE AND SAFETY CABLE. PAID FOR AS LUMINAIRE, LED, SPECIAL AND LUMINAIRE SAFETY CABLE ASSEMBLY RESPECTIVELY.

MATCH LINE H

S KENTON AVENUE

KOLMAR AVENUE

S KILBOURN AVENUE

S KENNETH AVENUE

MATCH LINE I

EXISTING LUMINAIRE TO BE REMOVED, PAID FOR
AS REMOVAL OF LIGHTING LUMINAIRE, NO
SALVAGE. LED LUMINAIRE TO BE INSTALLED
PAID FOR AS LUMINAIRE, LED, ROADWAY,
OUTPUT DESIGNATION G

EXISTING LUMINAIRE TO BE REMOVED, PAID FOR AS REMOVAL OF LIGHTING LUMINAIRE, NO SALVAGE. LED LUMINAIRE TO BE INSTALLED PAID FOR AS LUMINAIRE, LED, ROADWAY, OUTPUT DESIGNATION G

— EXISTING LUMINAIRE TO BE REMOVED, PAID FOR
AS REMOVAL OF LIGHTING LUMINAIRE, NO
SALVAGE. LED LUMINAIRE TO BE INSTALLED
PAID FOR AS LUMINAIRE, LED, ROADWAY,
OUTPUT DESIGNATION G

— EXISTING LUMINAIRE TO BE REMOVED, PAID FOR
AS REMOVAL OF LIGHTING LUMINAIRE, NO
SALVAGE. LED LUMINAIRE TO BE INSTALLED
PAID FOR AS LUMINAIRE, LED, ROADWAY,
OUTPUT DESIGNATION G

NOTES

1. A QUANTITY OF 1 EACH FOR MAINTENANCE OF EXISTING TRAFFIC SIGNAL HAS BEEN INCLUDED FOR THE INTERSECTION OF KILBOURN AVENUE AND US 20 (95TH STREET) (TS 492).



1170 SOUTH HOUBOLT ROAD
JOLIET, ILLINOIS 60431
(815) 744-4200

USER NAME	= JackD
PLOT SCALE	= 100.0
PLOT DATE	= 12/1

DESIGNED -	JED
DRAWN -	JMR
CHECKED -	AJR
DATE -	11/17/2025

REVISED	-
REVISED	-
REVISED	-
REVISED	-

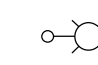
STATE OF ILLINOIS
DEPARTMENT OF TRANSPORTATION

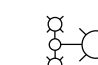
95TH STREET 69TH AVE./NEW ENGLAND AVE. TO PULASKI AVE.
REMOVAL AND PROPOSED LIGHTING DRAWINGS

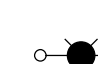
SCALE: 1" = 50'	SHEET 10 OF 12 SHEETS	STA.	TO STA.
-----------------	-----------------------	------	---------

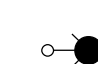
F.A.P. RTE.	SECTION	COUNTY	TOTAL SHEETS	SHEET NO.
29	24-00198-00-LT	COOK	18	14
		CONTRACT NO. 61M21		
ILLINOIS				

LEGEND

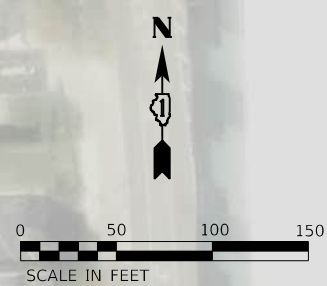
- 

EXISTING 6-FT MAST ARM LIGHT POLE EQUIPPED WITH HPS COBRA HEAD STYLE LUMINAIRE. HPS LUMINAIRE TO BE REMOVED AND SALVAGED. PAID FOR AS REMOVAL OF LUMINAIRE, SALVAGE, ROADWAY. INSTALL LED LUMINAIRE AND SAFETY CABLE. PAID FOR AS LUMINAIRE, LED, SPECIAL AND LUMINAIRE SAFETY CABLE ASSEMBLY RESPECTIVELY.
- 


EXISTING 6-FT MAST ARM LIGHT POLE EQUIPPED WITH A COBRA HEAD STYLE AND DUAL GLOBE STYLE HPS LUMINAIRES. COBRA HEAD STYLE AND GLOBE STYLE HPS LUMINAIRE TO BE REMOVED AND SALVAGED. PAID FOR AS REMOVAL OF LUMINAIRE, SALVAGE, ROADWAY AND REMOVAL OF LUMINAIRE, SALVAGE RESPECTIVELY. INSTALL LED LUMINAIRE AND SAFETY CABLE. PAID FOR AS LUMINAIRE, LED, SPECIAL AND LUMINAIRE SAFETY CABLE ASSEMBLY RESPECTIVELY.
- 

EXISTING COMBINATION MAST ARM ASSEMBLY AND POLE WITH 15-FT LIGHTING ARM, EQUIPPED WITH HPS COBRA HEAD STYLE LUMINAIRE. HPS LUMINAIRE TO BE REMOVED AND SALVAGED. PAID FOR AS REMOVAL OF LUMINAIRE, SALVAGE, ROADWAY. INSTALL LED LUMINAIRE AND SAFETY CABLE. PAID FOR AS LUMINAIRE, LED, SPECIAL AND LUMINAIRE SAFETY CABLE ASSEMBLY RESPECTIVELY.
- 

EXISTING 15-FT MAST ARM LIGHT POLE, EQUIPPED WITH HPS COBRA HEAD STYLE LUMINAIRE. HPS LUMINAIRE TO BE REMOVED AND SALVAGED. PAID FOR AS REMOVAL OF LUMINAIRE, SALVAGE, ROADWAY. INSTALL LED LUMINAIRE AND SAFETY CABLE. PAID FOR AS LUMINAIRE, LED, SPECIAL AND LUMINAIRE SAFETY CABLE ASSEMBLY RESPECTIVELY.



MODEL Default
FILE Name: 33\COL1800-4899\801002\Drawings\CADD\CAD_sheets\801-002_dht_95th-5c-12_02042025.dgn



1170 SOUTH HOUBOLT ROAD
JOLIET, ILLINOIS 60431
(815) 744-4200

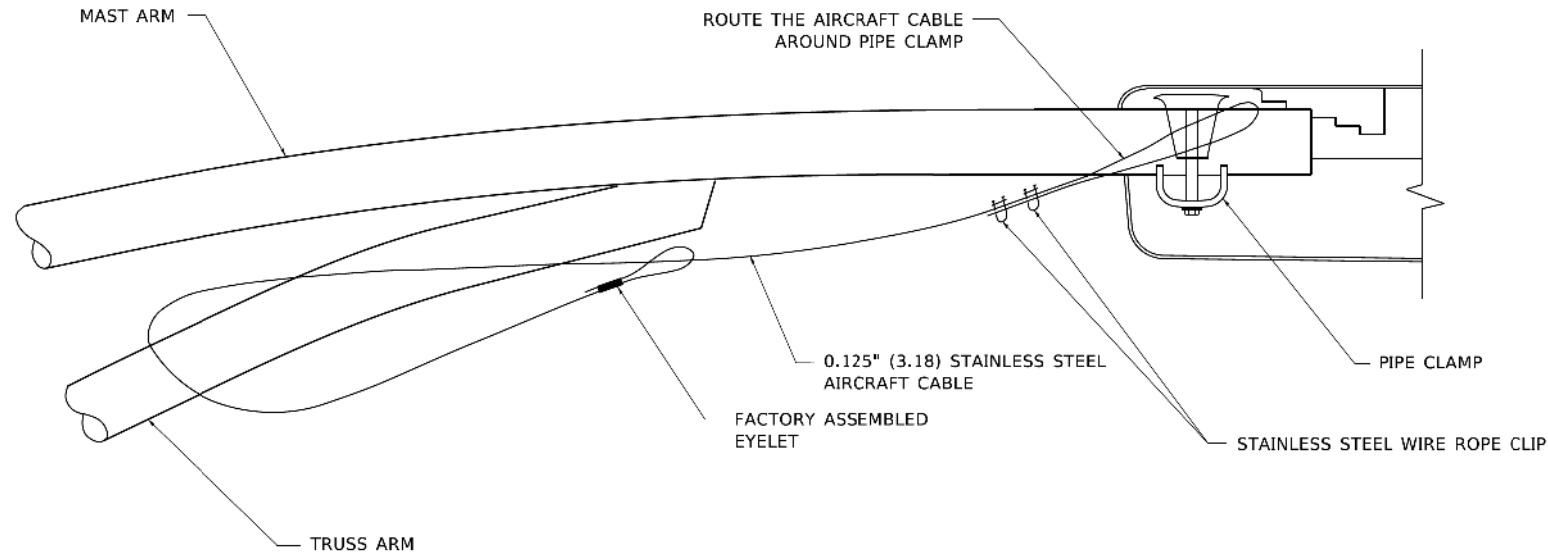
USER NAME = JackD	DESIGNED - JED	REVISED -
	DRAWN - JMR	REVISED -
PLOT SCALE = 100,0000 ' / in.	CHECKED - AJR	REVISED -
PLOT DATE = 12/11/2025	DATE - 11/17/2025	REVISED -

STATE OF ILLINOIS
DEPARTMENT OF TRANSPORTATION

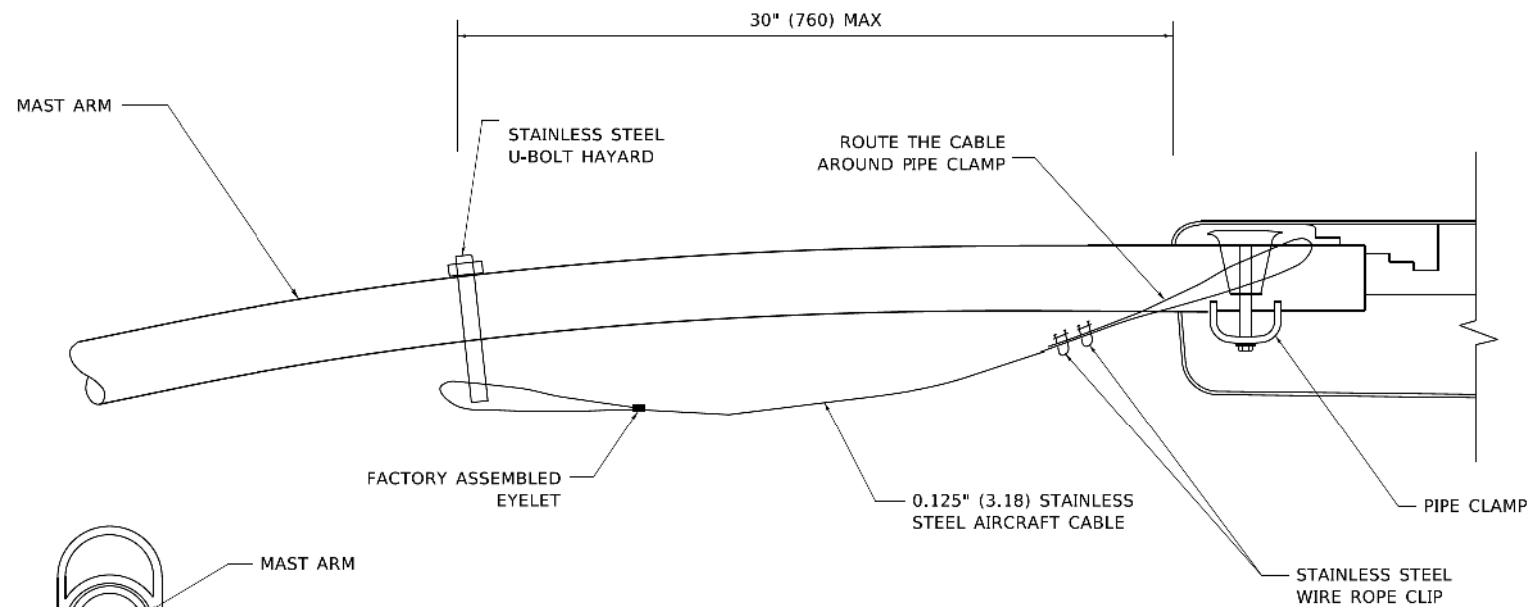
95TH STREET 69TH AVE./NEW ENGLAND AVE. TO PULASKI AVE.
REMOVAL AND PROPOSED LIGHTING DRAWINGS

SCALE: 1" = 50' SHEET 11 OF 12 SHEETS STA. TO STA.

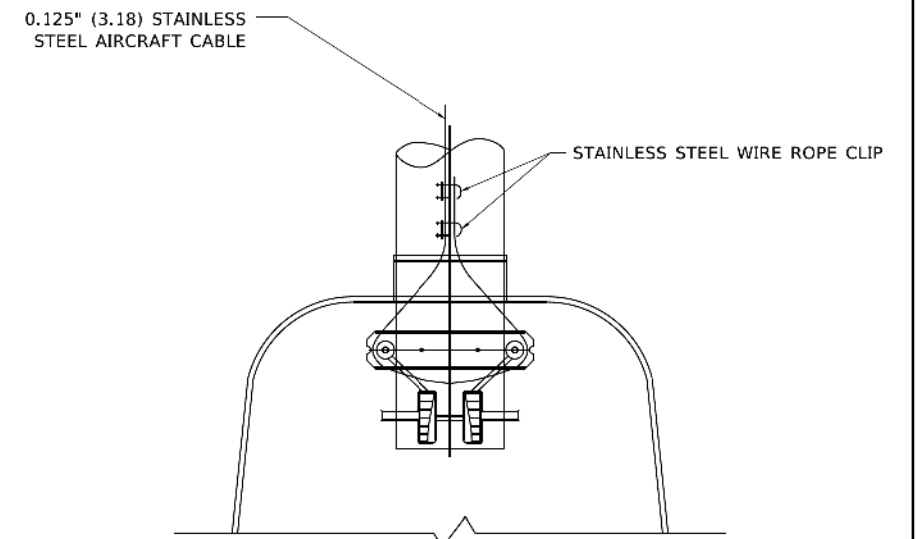
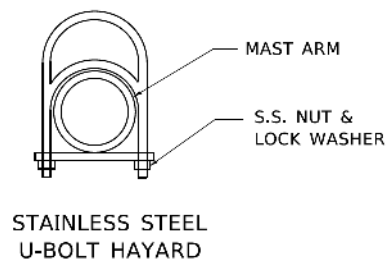
F.A.P. RTE. 29	SECTION 24-00198-00-LT	COUNTY COOK	TOTAL SHEETS 18	SHEET NO. 15
ILLINOIS			CONTRACT NO. 61M21	



SIDE VIEW (TRUSS ARM)
N.T.S.



SIDE VIEW (SINGLE MEMBER OR DAVIT ARM)
N.T.S.



BOTTOM VIEW
N.T.S.

NOTES:

1. ALL DIMENSIONS ARE IN MILLIMETERS (INCHES) UNLESS OTHERWISE SHOWN.
2. CONTRACTOR SHALL ADJUST THE WIRE CLIP TO ELIMINATE ANY SLACK FROM THE WIRE ROPE.
3. THE 0.125\" (3.18) STAINLESS STEEL AIRCRAFT CABLE SHALL REMAIN VISIBLE FROM THE GROUND LEVEL.
4. THE BREAKING STRENGTH OF THE CABLE SHALL BE 1700 LBS. MIN.

MODEL Default: H:\A_Marketing\Drawings\CAD\CAD_sheets\801-L002_dht_95th-St-01_Details.dgn

USER NAME = fop10m	DESIGNED -	REVISED - 08-08-03
	DRAWN -	REVISED -
PLOT SCALE = 50.0000 ' / in.	CHECKED -	REVISED -
PLOT DATE = 4/19/2019	DATE -	REVISED -

STATE OF ILLINOIS
DEPARTMENT OF TRANSPORTATION

LUMINAIRE SAFETY CABLE ASSEMBLY					
SCALE: NONE	SHEET 1	OF 1	SHEETS	STA.	TO STA.

F.A.P. RTE.	SECTION	COUNTY	TOTAL SHEETS	SHEET NO.
	BE-701			CONTRACT NO.
		ILLINOIS	FED. AID PROJECT	

MODEL Default: H:\A_Marketing\Drawings\CAD\CAD_sheets\801-L002_dht_95th-St-01_Details.dgn

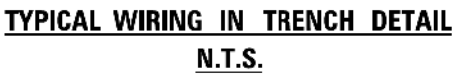
SA
STRAND
ASSOCIATES®
1170 SOUTH HOUBOLT ROAD
JOLIET, ILLINOIS 60431
(815) 744-4200

USER NAME = JackD	DESIGNED - JED	REVISED -
	DRAWN - JMR	REVISED -
PLOT SCALE = 100.0000 ' / in.	CHECKED - AJR	REVISED -
PLOT DATE = 12/11/2025	DATE - 11/17/2025	REVISED -

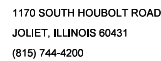
STATE OF ILLINOIS
DEPARTMENT OF TRANSPORTATION

95TH STREET 69TH AVE./NEW ENGLAND AVE. TO PULASKI AVE. DISTRICT ONE DETAILS					
SCALE:	SHEET	OF 2	SHEETS	STA.	TO STA.

F.A.P. RTE.	SECTION	COUNTY	TOTAL SHEETS	SHEET NO.
29	24-00199-00-LT	COOK	18	17
				CONTRACT NO. 61M21
		ILLINOIS		



MODEL: Default
FILE NAME: S:\JOL\4800-4899\4801\002\Drawings\CAD\CAD sheets\4801-002 sht 95th-St-D1 Details.dgn



STATE OF ILLINOIS
DEPARTMENT OF TRANSPORTATION

F.A.P. RTE.	SECTION	COUNTY	TOTAL SHEETS	SHEET NO.
29	24-00199-00-LT	COOK	18	18
		CONTRACT NO. 61M21		
ILLINOIS				