

INDEX OF SHEETS

02-27-2026 LETTING ITEM 092

- COVER SHEET
- GENERAL NOTES, COMMITMENTS, AND HIGHWAY STANDARDS,
- SUMMARY OF QUANTITIES
- TYPICAL SECTIONS
- PLAN
- ADA PLAN
- ADA DETAILS

STATE OF ILLINOIS DEPARTMENT OF TRANSPORTATION PLANS FOR PROPOSED FEDERAL AID HIGHWAY STP-S FUNDING

MEYER AVE., CEDAR BLUFF, & WOODLAND RIDGE
COUNTY HIGHWAY 11 EXTENSION VALMEYER RESURFACING
SECTION 22-00011-00-RS
PROJECT NO. 96GB(969)
VILLAGE OF VALMEYER
COUNTY OF MONROE
JOB NO. C-98-005-26

R 11 W

SCALES

PLAN 1" = 125'



DESIGN CLASSIFICATION

ROAD CLASSIFICATION = MAJOR COLLECTOR
2024 ADT = 1100 VPD
DESIGN SPEED: 50 MPH
POSTED SPEED: 30 MPH
LAFO DESIGN STANDARDS

UTILITIES

CALL J.U.L.I.E. BEFORE YOU DIG
800-892-0123

ELECTRIC:

AMEREN ILLINOIS
BELLEVILLE, IL 62221
(618) 236-4372

FIBER OPTIC:

HARRISONVILLE TELEPHONE COMPANY
WATERLOO, IL 62298
(618) 939-6112

WATER:

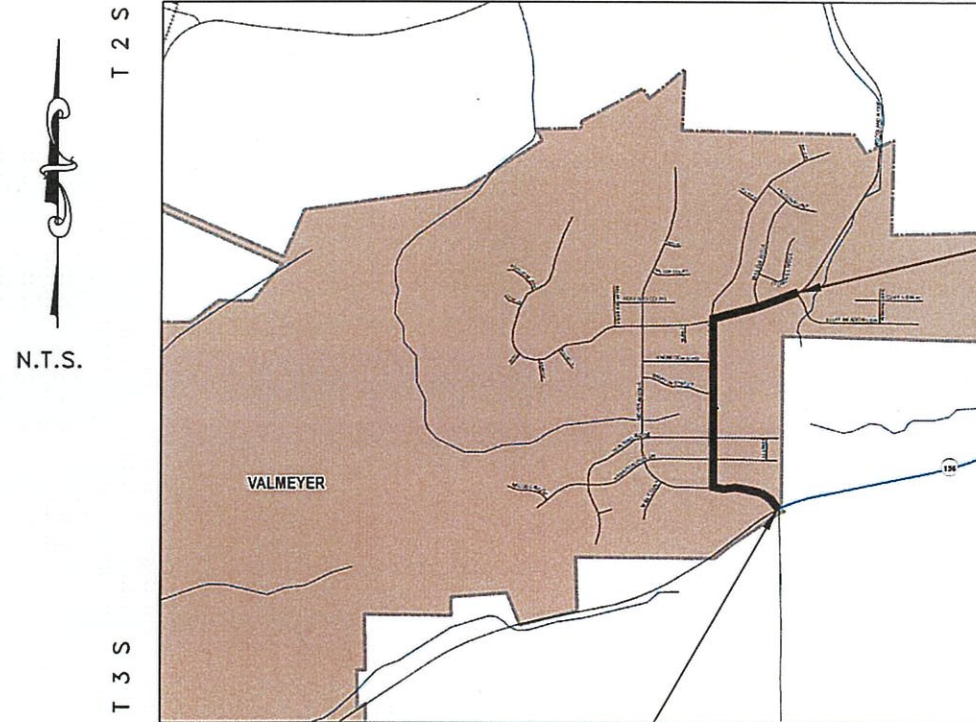
FOUNTAIN WATER DISTRICT
VALMEYER, IL 62295
(618) 935-2121

GAS:

AMEREN ILLINOIS
BELLEVILLE, IL 62221
(618) 236-4372

TELEPHONE:

HARRISONVILLE TELEPHONE COMPANY
WATERLOO, IL 62298
(618) 939-6112



BEGIN PROJECT
STA. 0+00

END PROJECT
STA. 212+40

LOCATION MAP

GROSS LENGTH = 4380.00 FEET = 0.83 MILES
NET LENGTH = 4380.00 FEET = 0.83 MILES

RTE.	SECTION	COUNTY	TOTAL SHEETS	SHEET NO.
C.H.11	22-00011-00-RS	MONROE	17	1
MONROE COUNTY		ILLINOIS	CONTRACT NO. 97889	



LOCATION OF SECTION INDICATED THUS: ———

STATE OF ILLINOIS
DEPARTMENT OF TRANSPORTATION

APPROVED 12/9/2025
[Signature]
Mayor
Village of Valmeyer

Passed 12/17/2025
[Signature]
District 8 Engineer
Local Roads and Streets

Released for
Bid Based on
Limited Review 12/17/2025
[Signature]
Region 5 Engineer

PRINTED BY THE AUTHORITY
OF THE STATE OF ILLINOIS

DRAWN BY CASEY L. CARNAHAN DATE 10/06/2025

CHECKED BY AARON W. METZGER DATE 10/8/2025

DESIGN CERTIFICATION
062-055382
These plans were prepared by me or a full time
member of my staff under my personal supervision.
AARON W. METZGER
COUNTY ENGINEER OF ILLINOIS
Date 12-9-25
Illinois Registered Professional Engineer No. 055382
Expiration Date: 11/30/27

GENERAL NOTES

1. TRAFFIC CONTROL AND PROTECTION AND PROPER BARRICADES SHALL BE MAINTAINED BY THE CONTRACTOR.
2. THE CONTRACTOR WILL BE REQUIRED TO HAVE TWO FLAGGERS ON-SITE DURING ALL MAINLINE PAVING OPERATIONS.
3. THE CONTRACTOR IS RESPONSIBLE FOR CONTACTING THE MONROE COUNTY HIGHWAY DEPARTMENT AT LEAST 48 HOURS IN ADVANCE PRIOR TO COMMENCEMENT OF ANY CONSTRUCTION ACTIVITIES OR WORK REQUIRING INSPECTION OR APPROVAL.
4. USE ALL FLUORESCENT ORANGE 48” CONSTRUCTION SIGNS.
5. NO OVERNIGHT LANE CLOSURES WILL BE ALLOWED ON THIS PROJECT.
6. FACTORS USED FOR QUANTITY CALCULATIONS ARE AS FOLLOWS:

ALL HOT-MIX ASPHALT – 112.0 LBS/SQ YD PER 1” THICKNESS

ALL BITUMINOUS MATERIALS (TACK COAT) – 0.05 LB/SQ FT
7. PAVEMENT PATCHING QUANTITIES HAVE BEEN ESTIMATED AND WILL BE LAID OUT IN THE FIELD AND COMPLETED AS DIRECTED BY THE ENGINEER.
8. ACCESS SHALL BE PROVIDED TO/FROM PRIVATE ENTRANCES AT ALL LOCATIONS DURING ALL STAGES.
9. SEEDING IS NOT ANTICIPATED, ANY AREA DISTURBED OUTSIDE THE CONSTRUCTION LIMITS DURING CONSTRUCTION SHALL BE RESTORED TO ITS ORIGINAL CONDITION AT THE CONTRACTORS EXPENSE.
10. THERMOPLASTIC PAVEMENT MARKINGS SHALL MATCH EXISTING EXCEPT WHERE INDICATED ON THE PLANS AND AS DIRECTED BY THE ENGINEER.
11. 1/2 INCH EXPANSION MATERIAL SHALL BE PLACED BETWEEN THE CURB AND SIDEWALK AT ALL LOCATIONS. COST OF 1/2 INCH EXPANSION SHALL BE INCLUDED IN THE CONTRACT UNIT PRICE FOR PORTLAND CEMENT CONCRETE SIDEWALK – 4 INCH
12. FORMS FOR COMBINATION CURB AND GUTTER SHALL BE OF METAL ONLY, EXCEPT THAT WOOD FORMS SHALL BE USED ON SHORT RADIUS CURVES.
13. AGGREGATE BASE SHALL BE PLACED AND COMPACTED, AS NEEDED, AND AS APPROVED BY THE ENGINEER, TO OBTAIN PROPER SIDEWALK SLOPE. AGGREGATE BASE WILL NOT BE MEASURED FOR PAYMENT BUT SHALL BE INCLUDED IN THE CONTRACT UNIT PRICE FOR PORTLAND CEMENT CONCRETE SIDEWALK – 4 INCH.

HIGHWAY STANDARDS

STANDARD SYMBOLS	000001–09 001001–02
PAVEMENT PATCHING	442201–04
SIDEWALK	424001–12 424006–06 424011–06 424016–06 424021–07
CURB AND GUTTER	606001–09
TRAFFIC CONTROL	701001–02 701006–05 701201–05 701306–04 701311–03 701501–06 701801–06 701901–11
PAVEMENT MARKING	780001–05

HOT-MIX ASPHALT MIX REQUIREMENTS	
LOCATIONS	ALL
MIXTURE USE	SURFACE
AC/PG	PG 64–22
DESIGN AIR VOIDS	4.0% @ Ndes =70
MIXTURE COMPOSITION (GRADATION MIXTURE)	IL–9.5
FRICTION AGGREGATE	MIXTURE D
MIXTURE WEIGHT	112.0 LB/SQ YD/IN
QUALITY MANAGEMENT PROGRAM	QC/QA
SUBLOT SIZE	N/A
MATERIAL TRANSFER DEVICE	NO

SALVAGE: NONE

COMMITMENTS: NONE

DRAWING FILE: S:\Floerville Road\COVER

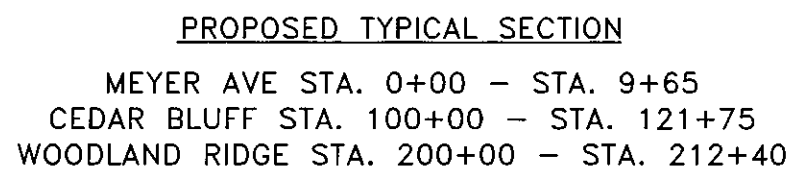
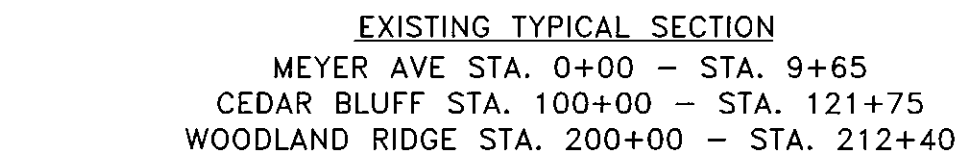
	USER NAME =	DESIGNED –	REVISED –	MONROE COUNTY HIGHWAY DEPARTMENT	GENERAL NOTES, COMMITMENTS, AND HIGHWAY STANDARDS			F.A.S. RTE.	SECTION	COUNTY	TOTAL SHEETS	SHEET NO.
		DRAWN –	REVISED –					C.H.11	22–00011–00–RS	MONROE	17	2
	PLOT SCALE = 100,000' / in.	CHECKED –	REVISED –					CONTRACT NO. 97889				
	PLOT DATE =	DATE –	REVISED –					ILLINOIS FED. AID PROJECT				
SCALE: NA		SHEET 1 OF 1 SHEETS		STA.		TO STA.						

DRAWING FILE: s:\Florence Road\COVER

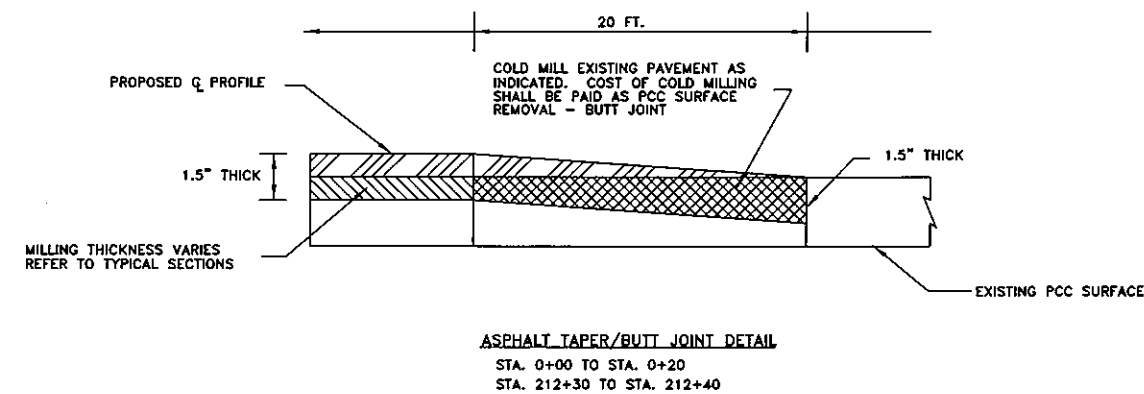
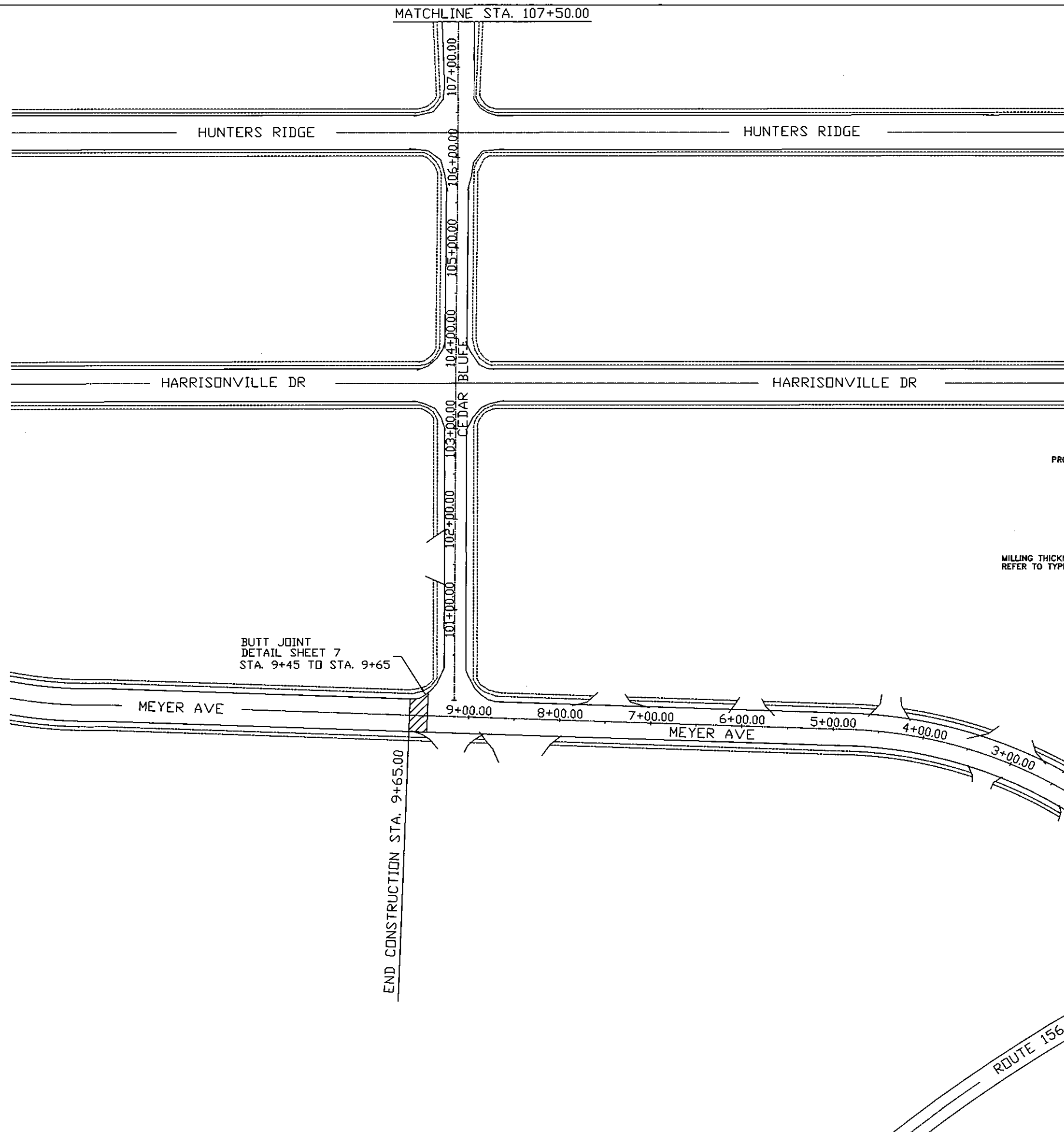
SUMMARY OF QUANTITIES			
CODE	ITEM	UNIT	QUANTITY
40600982	PORTLAND CEMENT CONCRETE SURFACE REMOVAL - BUTT JOINT	SQ YD	436
40600990	TEMPORARY RAMP	SQ YD	48
40600290	BITUMINOUS MATERIALS (TACK COAT)	POUND	7500
40604062	HOT-MIX ASPHALT SURFACE COURSE, IL-9.5, MIX "D" N70	TON	1480
42400100	PORTLAND CEMENT CONCRETE SIDEWALK - 4 INCH	SQ FT	2300
42400800	DETECTABLE WARNINGS	SQ FT	310
44000500	COMBINATION CURB AND GUTTER REMOVAL	FT	900
44000600	SIDEWALK REMOVAL	SQ FT	2300
44201301	CLASS C PATCHES, TYPE I, 6 INCH	SQ YD	7.7
44201305	CLASS C PATCHES, TYPE II, 6 INCH	SQ YD	133.5
44201309	CLASS C PATCHES, TYPE III, 6 INCH	SQ YD	37
44201311	CLASS C PATCHES, TYPE IV, 6 INCH	SQ YD	459.3
44201337	CLASS C PATCHES, TYPE I, 9 INCH	SQ YD	6.5
44201341	CLASS C PATCHES, TYPE II, 9 INCH	SQ YD	35.9
44201345	CLASS C PATCHES, TYPE III, 9 INCH	SQ YD	24.9
44201347	CLASS C PATCHES, TYPE IV, 9 INCH	SQ YD	203.6
60255500	MANHOLES TO BE ADJUSTED	EACH	14
60603800	COMBINATION CONCRETE CURB AND GUTTER, TYPE B-6.12	FT	900
67100100	MOBILIZATION	L SUM	1
70300100	SHORT TERM PAVEMENT MARKING	FT	796
70300150	SHORT TERM PAVEMENT MARKING REMOVAL	SQ FT	134
70300221	TEMPORARY PAVEMENT MARKING - LINE 4" - PAINT	FT	17520
70300261	TEMPORARY PAVEMENT MARKING - LINE 12" - PAINT	FT	504
70300281	TEMPORARY PAVEMENT MARKING - LINE 24" - PAINT	FT	108
* 78000200	THERMOPLASTIC PAVEMENT MARKING - LINE 4"	FT	17520
* 78000600	THERMOPLASTIC PAVEMENT MARKING - LINE 12"	FT	504
* 78000650	THERMOPLASTIC PAVEMENT MARKING - LINE 24"	FT	108
78300201	PAVEMENT MARKING REMOVAL - GRINDING	SQ FT	5840
X4400100	PORTLAND CEMENT CONCRETE SURFACE REMOVAL (VARIABLE DEPTH)	SQ YD	11420
X7010216	TRAFFIC CONTROL AND PROTECTION (SPECIAL)	L SUM	1
# Z0076600	TRAINEES	HOUR	500
# Z0076604	TRAINEES TRAINING PROGRAM GRADUATE	HOUR	500

* SPECIALTY ITEM # 0042

USER NAME =	DESIGNED -	REVISED -	MONROE COUNTY HIGHWAY DEPARTMENT	SUMMARY OF QUANTITIES			F.A.S. RTE.	SECTION	COUNTY	TOTAL SHEETS	SHEET NO.
	DRAWN -	REVISED -					C.H.11	22-00011-00-RS	MONROE	17	3
	PLOT SCALE = 100,000' / in.	CHECKED -	REVISED -	SCALE: NA			CONTRACT NO. 97889				
	PLOT DATE =	DATE -	REVISED -	SHEET 1 OF 1 SHEETS STA.			ILLINOIS FED. AID PROJECT				



USER NAME =	DESIGNED -	REVISED -	MONROE COUNTY HIGHWAY DEPARTMENT	TYPICAL SECTIONS				F.A.S. RTE.	SECTION	COUNTY	TOTAL SHEETS	SHEET NO.
	DRAWN -	REVISED -						C.H.11	22-00011-00-RS	MONROE	17	4
PLOT SCALE = 100,000' / in.	CHECKED -	REVISED -						CONTRACT NO. 97889				
PLOT DATE =	DATE -	REVISED -		SCALE: NA	SHEET 1 OF 1 SHEETS	STA.	TO STA.	ILLINOIS FED. AID PROJECT				



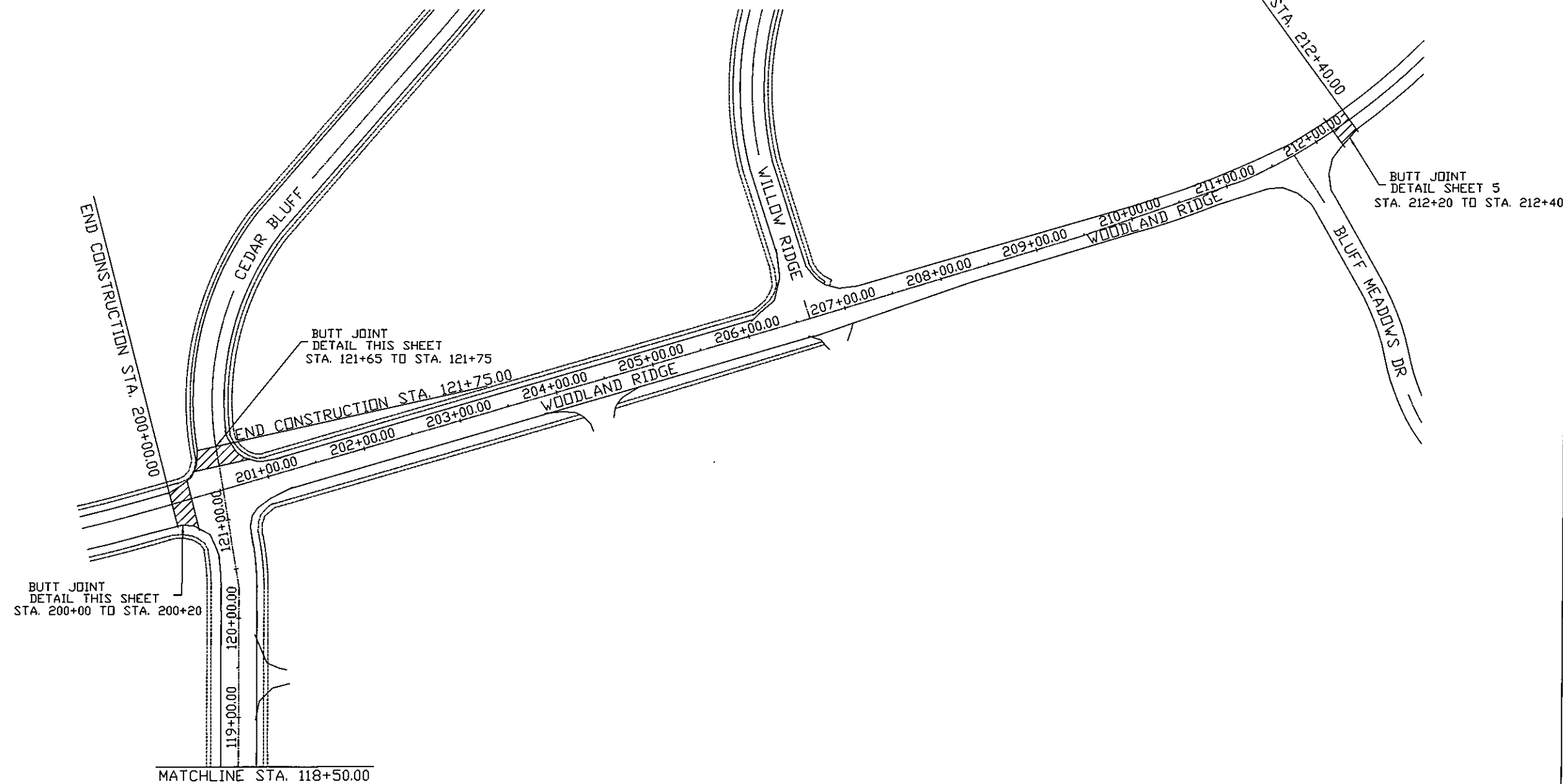
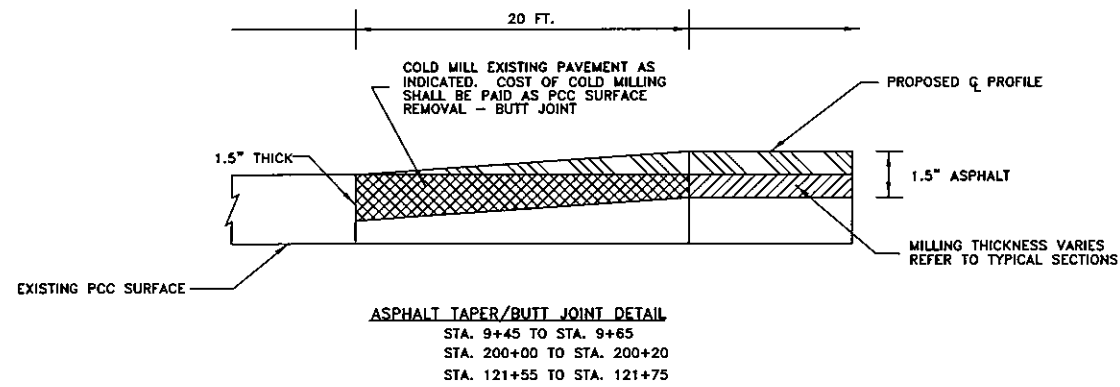
USER NAME =	DESIGNED -	REVISED -
	DRAWN -	REVISED -
PLOT SCALE =	CHECKED -	REVISED -
PLOT DATE =	DATE -	REVISED -

MONROE COUNTY
HIGHWAY DEPARTMENT

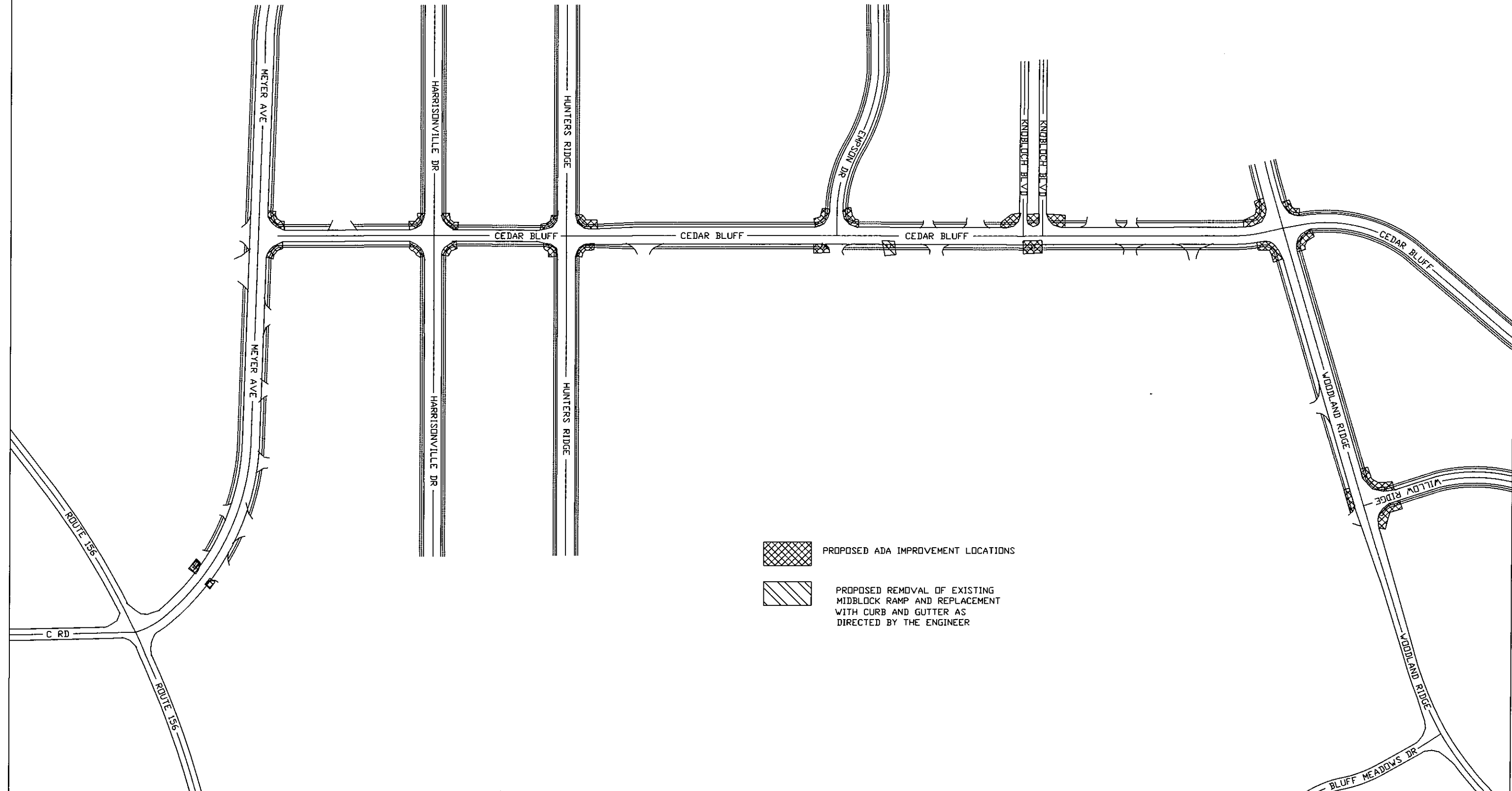
PLAN



SCALE: 1"=125' SHEET 1 OF 3 SHEETS STA. TO STA.

F.A. RTE.	SECTION	COUNTY	TOTAL SHEETS	SHEET NO.
CH.11	22-00011-00-RS	MONROE	17	5
CONTRACT NO. 97889				
ILLINOIS FED. AID PROJECT				

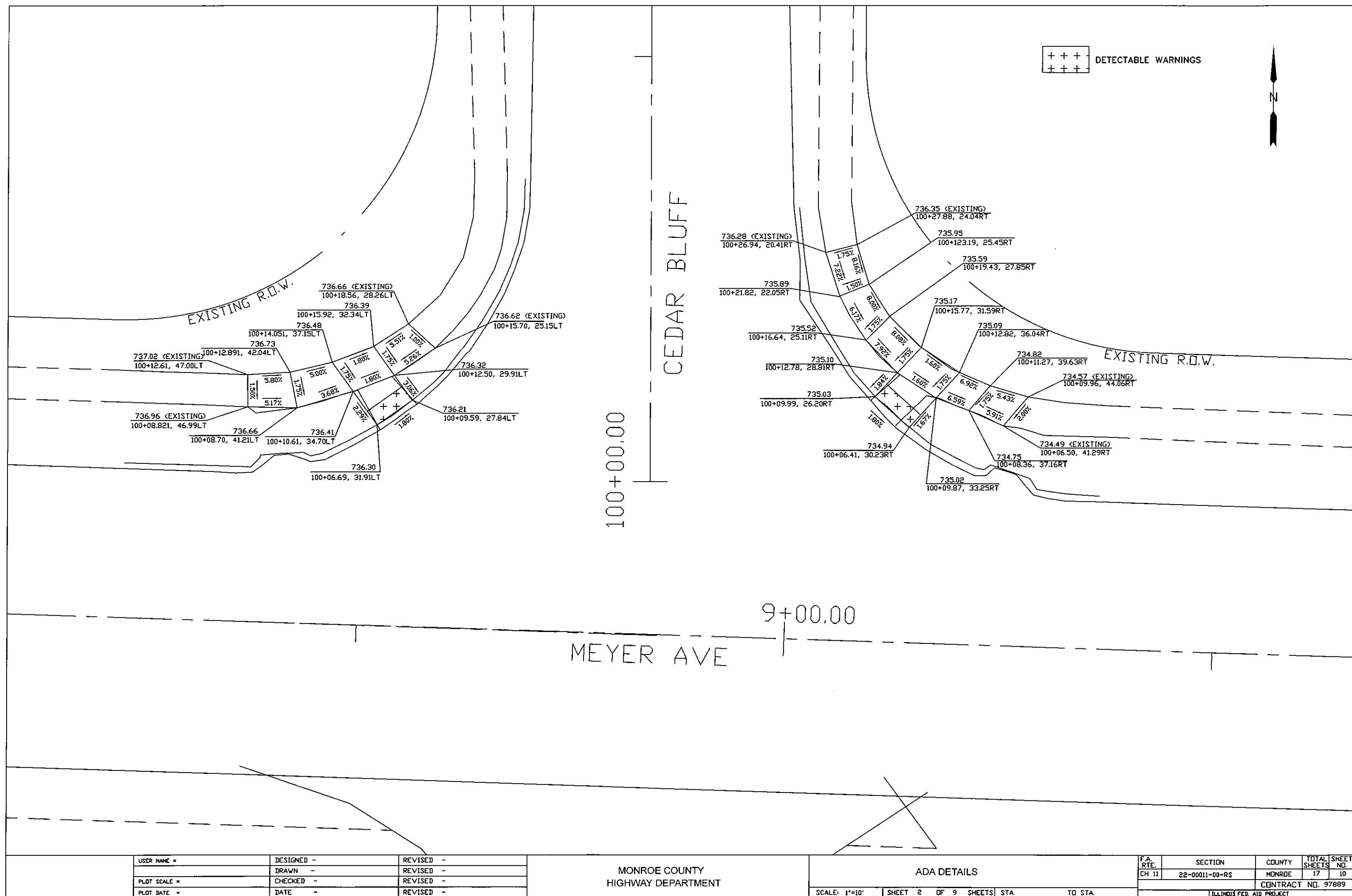


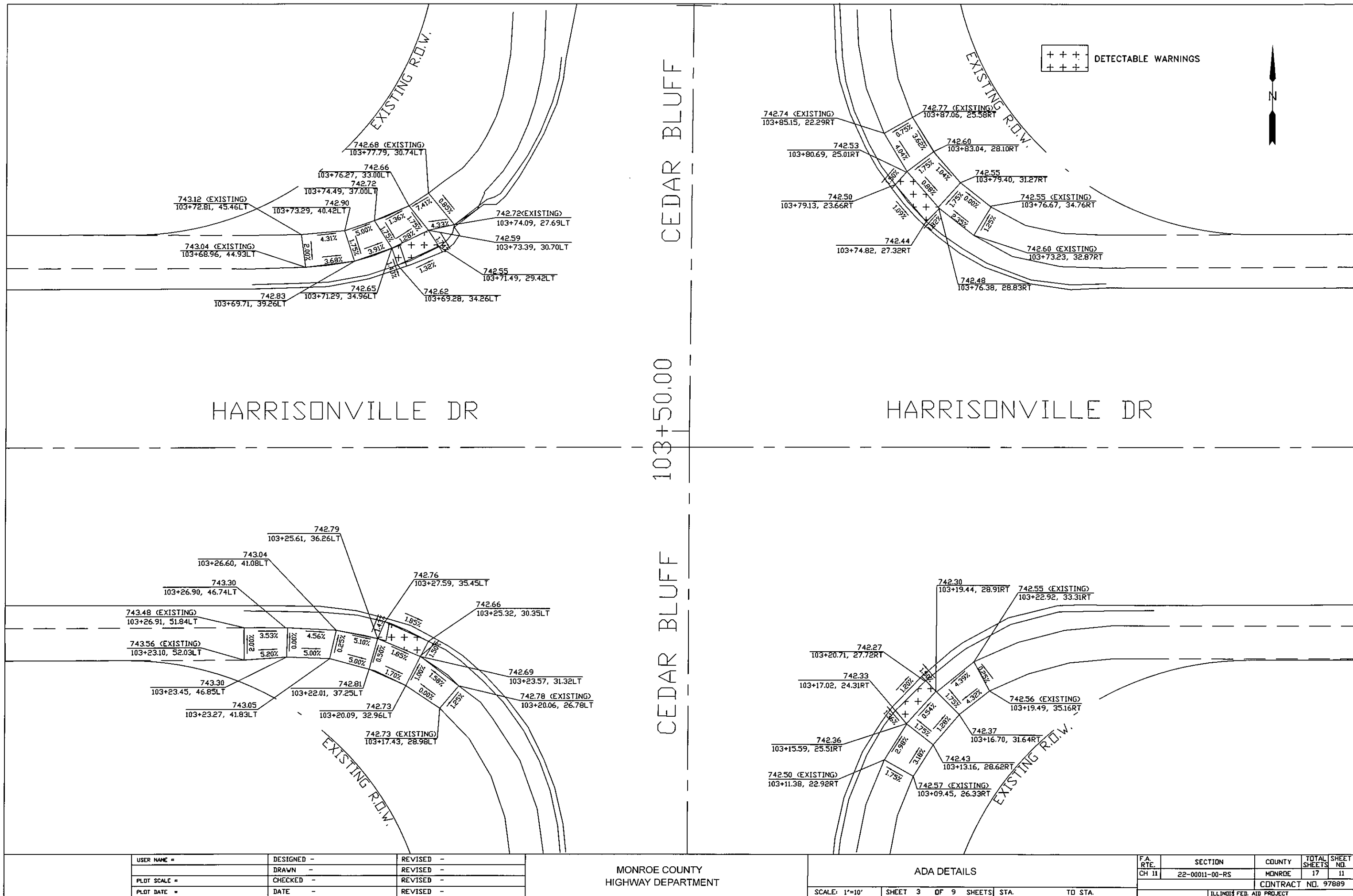
USER NAME =			DESIGNED -	REVISED -	MONROE COUNTY HIGHWAY DEPARTMENT	PLAN			F.A. RTE.	SECTION	COUNTY	TOTAL SHEETS	SHEET NO.
			DRAWN -	REVISED -					CH.11	22-00011-00-RS	MONROE	17	7
PLOT SCALE =			CHECKED -	REVISED -					CONTRACT NO. 97889				
PLOT DATE =			DATE -	REVISED -		SCALE: 1"=125'			ILLINOIS FED. AID PROJECT				
						SHEET 3 OF 3 SHEETS			STA. TO STA.				



-  PROPOSED ADA IMPROVEMENT LOCATIONS
-  PROPOSED REMOVAL OF EXISTING MIDBLOCK RAMP AND REPLACEMENT WITH CURB AND GUTTER AS DIRECTED BY THE ENGINEER

USER NAME =			DESIGNED -	REVISED -	MONROE COUNTY HIGHWAY DEPARTMENT	ADA PLAN			F.A. RTE.	SECTION	COUNTY	TOTAL SHEETS	SHEET NO.
PLOT SCALE =			DRAWN -	REVISED -					CH 11	22-00011-00-RS	MONROE	17	8
PLOT DATE =			CHECKED -	REVISED -		SCALE: SHEET OF SHEETS STA. TO STA.			CONTRACT NO. 97889				
			DATE -	REVISED -					ILLINOIS FED. AID PROJECT				





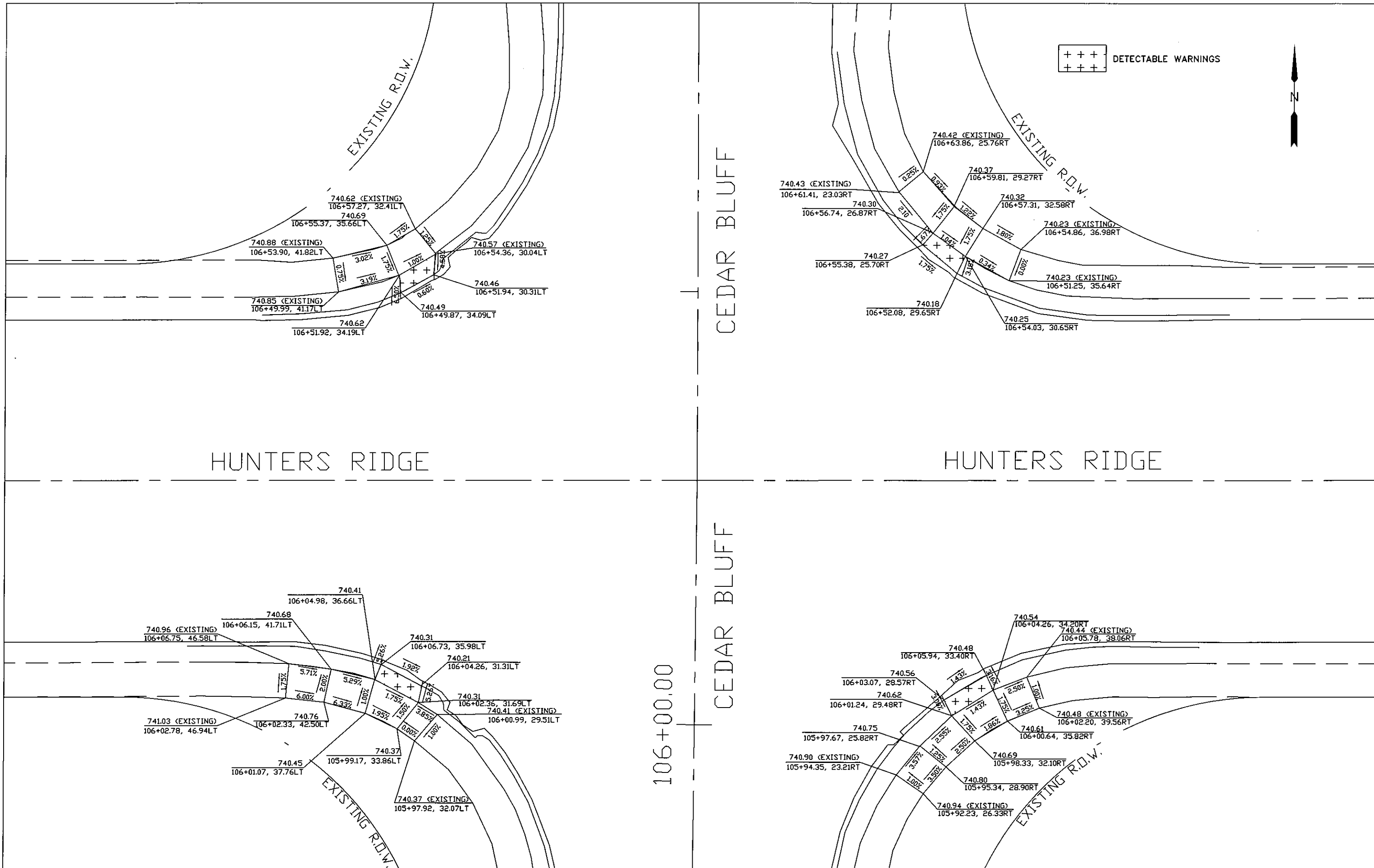
USER NAME =	DESIGNED -	REVISED -
	DRAWN -	REVISED -
PLOT SCALE =	CHECKED -	REVISED -
PLOT DATE =	DATE -	REVISED -

MONROE COUNTY
HIGHWAY DEPARTMENT

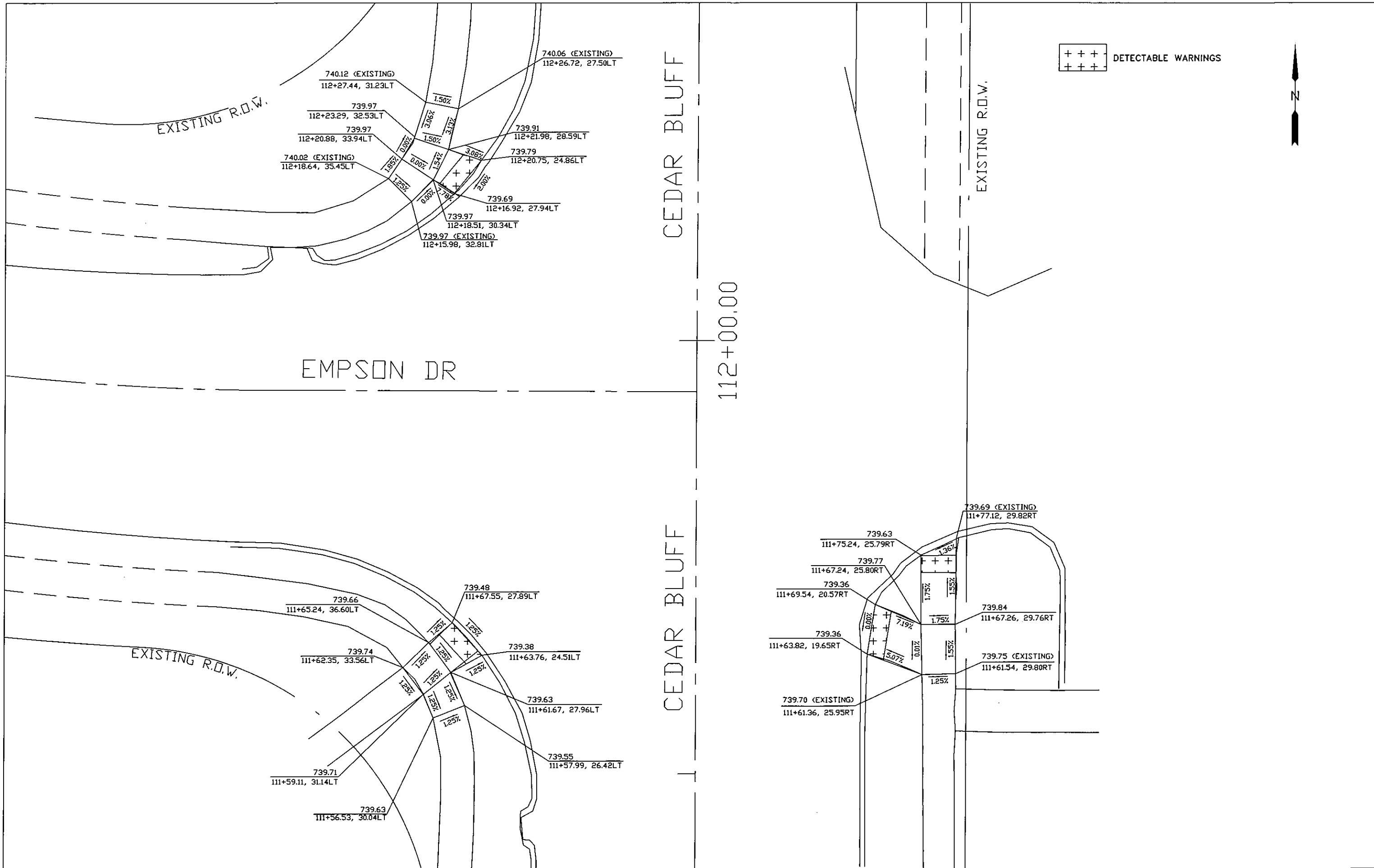
ADA DETAILS

SCALE: 1"=10' SHEET 3 OF 9 SHEETS STA. TO STA.

FA RTE.	SECTION	COUNTY	TOTAL SHEETS	SHEET NO.
CH 11	22-00011-00-RS	MONROE	17	11
CONTRACT NO. 97889				
ILLINOIS FED. AID PROJECT				



USER NAME =			DESIGNED -			REVISED -			MONROE COUNTY			ADA DETAILS			F.A. RTE.			SECTION			COUNTY			TOTAL SHEETS			SHEET NO.		
PLOT SCALE =			DRAWN -			REVISED -			HIGHWAY DEPARTMENT			SCALE: 1"=10'			CH 11			22-00011-00-RS			MONROE			17			12		
PLOT DATE =			CHECKED -			REVISED -						SHEET 4 OF 9 SHEETS									CONTRACT NO. 97889								
			DATE -			REVISED -						STA. TO STA.									ILLINOIS FED. AID PROJECT								

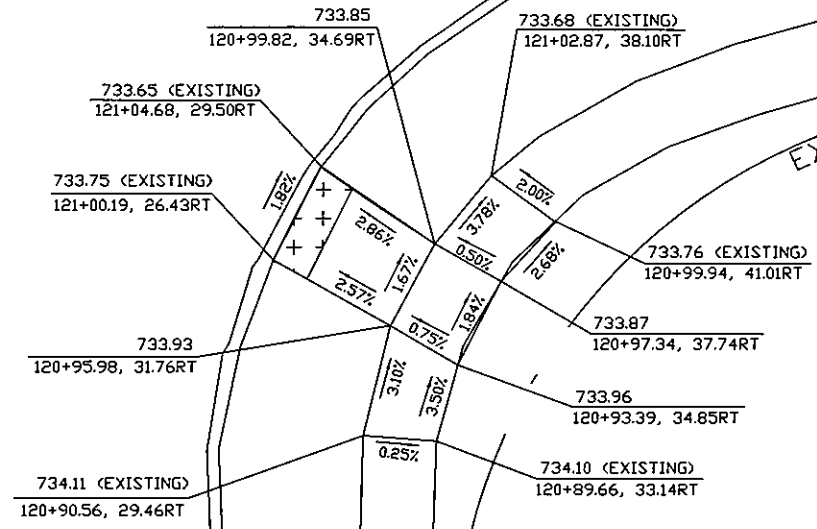
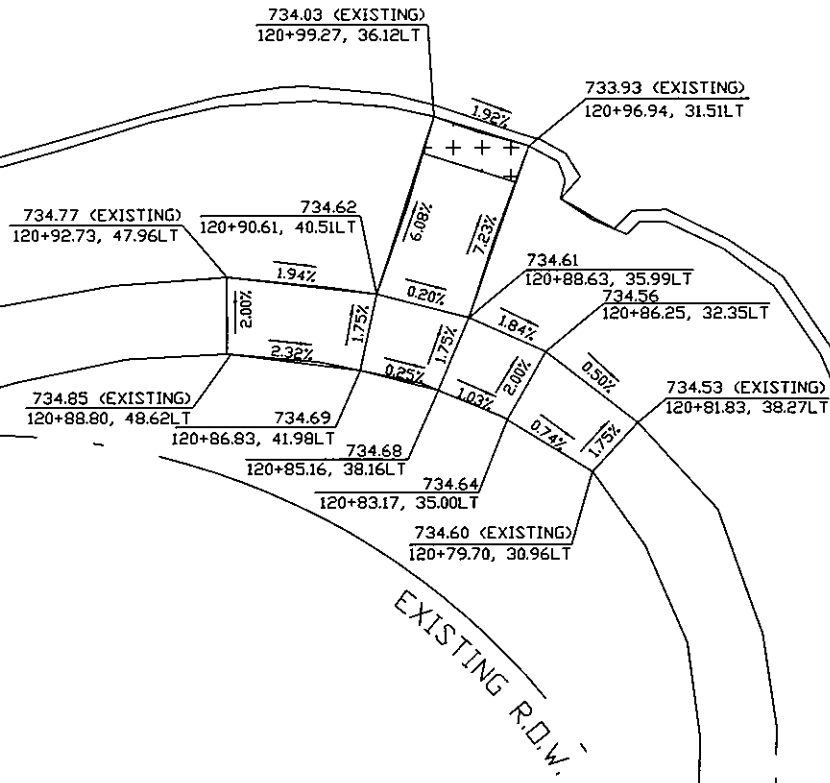


	USER NAME =	DESIGNED -	REVISED -	MONROE COUNTY HIGHWAY DEPARTMENT	ADA DETAILS			F.A. RTE.	SECTION	COUNTY	TOTAL SHEETS	SHEET NO.
		DRAWN -	REVISED -					CH 11	22-00011-00-RS	MONROE	17	13
	PLOT SCALE =	CHECKED -	REVISED -					CONTRACT NO. 97889				
	PLOT DATE =	DATE -	REVISED -		SCALE: 1"=10'	SHEET 5 OF 9 SHEETS	STA.	TO STA.	ILLINOIS FED. AID PROJECT			

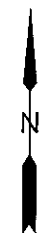
WOODLAND RIDGE
200+00.00

00+00+121
CEDAR BLUFF

EXISTING R.O.W.



+++
+++ DETECTABLE WARNINGS



USER NAME =	DESIGNED =	REVISED =
	DRAWN =	REVISED =
PLOT SCALE =	CHECKED =	REVISED =
PLOT DATE =	DATE =	REVISED =

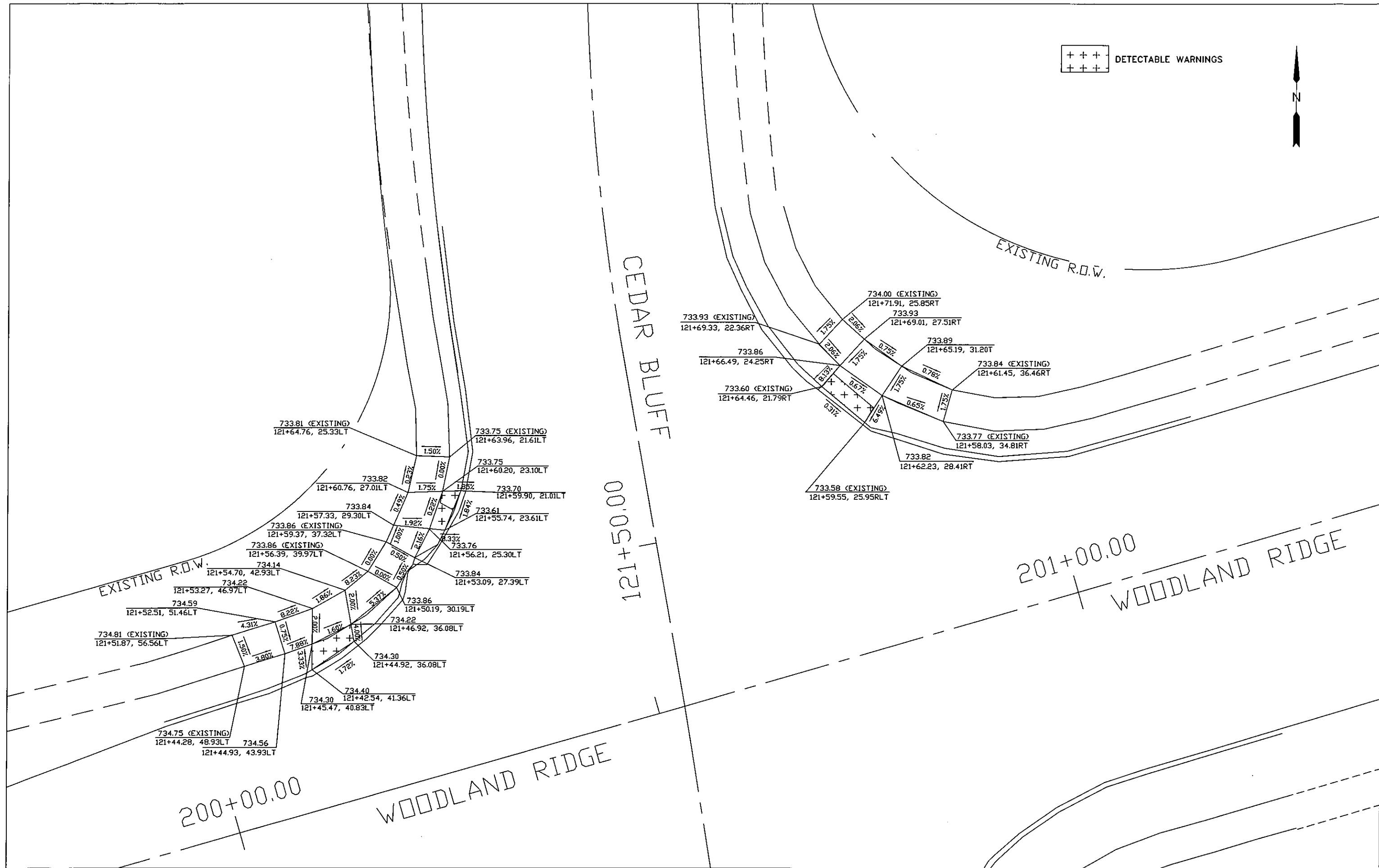
MONROE COUNTY
HIGHWAY DEPARTMENT

ADA DETAILS

SCALE: 1"=10' SHEET 7 OF 9 SHEETS STA. TO STA.

F.A. RTE.	SECTION	COUNTY	TOTAL SHEETS	SHEET NO.
CH 11	22-00011-00-RS	MONROE	17	15
CONTRACT NO. 97889				
ILLINOIS FED. AID PROJECT				

+++
+++
+++
DETECTABLE WARNINGS



USER NAME =	DESIGNED -	REVISED -
PLOT SCALE =	DRAWN -	REVISED -
PLOT DATE =	CHECKED -	REVISED -
	DATE -	REVISED -

MONROE COUNTY
HIGHWAY DEPARTMENT

ADA DETAILS

SCALE: 1"=10' SHEET 8 OF 9 SHEETS STA. TO STA.

F.A. RTE.	SECTION	COUNTY	TOTAL SHEETS	SHEET NO.
CH 11	22-00011-00-RS	MONROE	17	16
CONTRACT NO. 97889				
ILLINOIS FED. AID PROJECT				

