

INDEX OF SHEETS

02-27-2026 LETTING ITEM 151

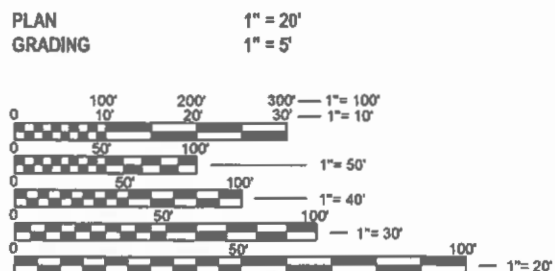
SHEET NO. ITEM

- 1 COVER SHEET
- 2 GENERAL NOTES, UTILITIES & COMMITMENTS
- 3-4 SUMMARY OF QUANTITIES
- 5 TYPICAL SECTION
- 6 SCHEDULE OF QUANTITIES
- 7-8 PLAN SHEETS
- 9-10 REMOVAL PLAN SHEETS
- 11-13 EROSION CONTROL, PAVEMENT MARKINGS, AND SIGNAGE SHEETS
- 14-16 GRADING DETAILS
- 17 CONSTRUCTION DETAILS
- 18-22 DRAINAGE DETAILS
- 23-24 EROSION CONTROL DETAILS

HIGHWAY STANDARDS

- 000001-09 STANDARD SYMBOLS, ABBREVIATIONS AND PATTERNS
- 001001-02 AREAS OF REINFORCEMENT BARS
- 001006 DECIMAL OF AN INCH AND OF A FOOT
- 280001-07 TEMPORARY EROSION CONTROL SYSTEMS
- 424001-12 PERPENDICULAR CURB RAMPS FOR SIDEWALKS
- 424016-06 MID-BLOCK CURB RAMPS FOR SIDEWALKS
- 442201-04 CLASS C&D PATCHES
- 602301-04 INLET TYPE A
- 602401-07 PRECAST MANHOLE TYPE A 4' DIAMETER
- 602601-06 PRECAST REINFORCED CONCRETE FLAT SLAB TOP
- 602701-02 MANHOLE STEPS
- 604006-05 FRAME AND GRATE TYPE 3
- 604021-04 BASE FRAME AND LID TYPE 5
- 606001-09 CONCRETE CURB TYPE B AND COMBINATION CONCRETE CURB AND GUTTER
- 701006-05 OFF-RD OPERATIONS 2L 2W 15' TO 24' FROM PAVEMENT EDGE
- 701301-04 LANE CLOSURE, 2L 2W, SHORT TIME OPERATIONS
- 701501-06 URBAN LANE CLOSURE, 2L 2W, UNDIVIDED
- 701801-06 SIDEWALK, CORNER OR CROSSWALK CLOSURE
- 701901-11 TRAFFIC CONTROL DEVICES
- 720001-01 SIGN PANEL MOUNTING DETAILS
- 720006-04 SIGN PANEL ERECTION DETAILS
- 720011-01 METAL POSTS FOR SIGNS MARKERS AND DELINEATORS
- 729001-01 APPLICATIONS OF TYPE A AND B METAL POSTS
- 780001-05 TYPICAL PAVEMENT MARKINGS
- B.L.R. 17-4 TRAFFIC CONTROL DEVICES - DAY LABOR CONSTRUCTION
- B.L.R. 18-6 TRAFFIC CONTROL DEVICES - DAY LABOR MAINTENANCE
- B.L.R. 21-9 TYPICAL APPLICATION OF TRAFFIC CONTROL DEVICES FOR CONSTRUCTION ON RURAL LOCAL HIGHWAYS

SCALE IN FEET

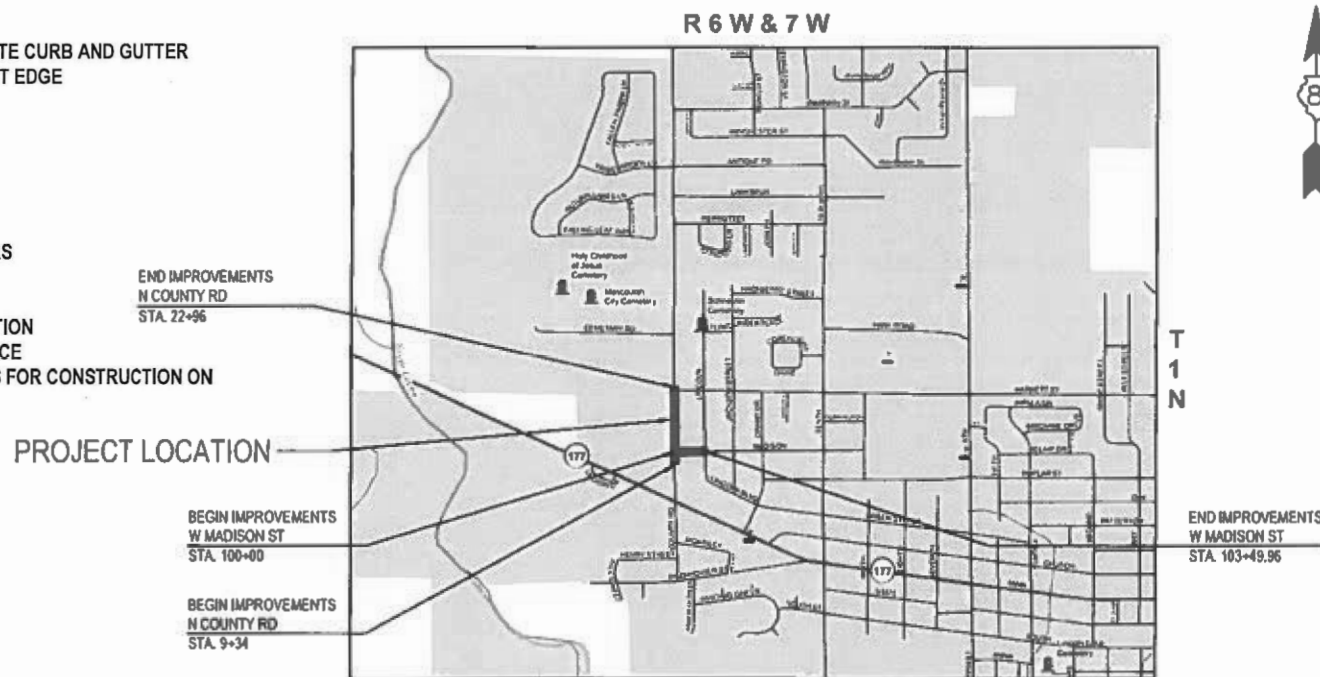


FULL SIZE PLANS HAVE BEEN PREPARED USING STANDARD ENGINEERING SCALES. REDUCED SIZED PLANS WILL NOT CONFORM TO STANDARD SCALES. IN MAKING MEASUREMENTS ON REDUCED PLANS, THE ABOVE SCALES MAY BE USED.

J.U.L.I.E.
JOINT UTILITY LOCATION INFORMATION FOR EXCAVATION
1-800-892-0123
OR 811

PLANS FOR PROPOSED

CITY OF MASCOUTAH, ILLINOIS
SRTS MASCOUTAH BUMP-OUTS
N COUNTY RD (FAU 9380)
ST. CLAIR COUNTY
SAFE ROUTES TO SCHOOL FUNDING
SECTION 24-00031-00-SW
PROJECT NO. MH6S(492)
JOB NO. C-98-084-25



LOCATION MAP

SCALE: 1" = 1000'



FAU RTE.	SECTION	COUNTY	TOTAL SHEETS	SHEET NO.
9380	24-00031-00-SW	ST. CLAIR	24	1
FED. ROAD DIST. NO.	ILLINOIS	CONTRACT NO. 97587		



CITY OF MASCOUTAH	
APPROVED	12/18/25 (Date) Walter Batas (Signature) WALTER BATAS, MAYOR
PASSED	12/22/25 (Date) District # 8 Engineer of Local Roads & Streets
RELEASING FOR BID BASED ON LIMITED REVIEW	122225 (Date) Kensil A. Garnett (Signature) Deputy Director of Highways, Region # 5 Engineer



1 South Church
Street, Suite 200
Belleville IL 62220
618.416.4688
www.oatesassociates.com
Columbia St. Louis Belleville St. Charles
ILLINOIS DESIGN FIRM LICENSE NO. 184001115

LICENSE EXPIRES: 11/30/2027

Brandon Beckmeyer
BRANDON B. BECKMEYER

DATE: 11/26/2025

GENERAL NOTES

UTILITIES

1. EXISTING UNDERGROUND FACILITIES, STRUCTURES AND UTILITIES HAVE BEEN PLOTTED FROM AVAILABLE SURVEYS AND RECORDS. THEIR LOCATIONS MUST BE CONSIDERED TO BE APPROXIMATE ONLY. IT IS POSSIBLE THERE MAY BE OTHERS, THE EXISTENCE OF WHICH IS NOT PRESENTLY KNOWN OR SHOWN. IT IS THE CONTRACTORS RESPONSIBILITY TO DETERMINE THEIR EXISTENCE AND EXACT LOCATION AND TO AVOID DAMAGE THERETO. ILLINOIS LAW REQUIRES A MINIMUM 48-HOUR NOTICE TO ALL UTILITY COMPANIES BEFORE DIGGING. FIELD LOCATIONS OF UNDERGROUND FACILITIES MAY BE OBTAINED BY CALLING THE J.U.L.I.E. SYSTEM AT 800-892-0123 AND PROVIDING 72 HOURS ADVANCE NOTICE. NON-J.U.L.I.E. MEMBERS MUST BE CONTACTED DIRECTLY. AGENCIES KNOWN TO HAVE FACILITIES WITHIN THE PROJECT LIMITS ARE LISTED BELOW.
2. ANY FACILITIES OR APPURTENANCES WHICH ARE THE PROPERTY OF ANY PUBLIC UTILITY LOCATED WITHIN THE LIMITS OF CONSTRUCTION SHALL BE RELOCATED OR ADJUSTED BY THEIR RESPECTIVE OWNERS. THE CONTRACTOR SHALL NOTIFY AND COOPERATE WITH THE OWNERS OF ANY SUCH FACILITY IN THEIR REMOVAL AND REARRANGEMENT OPERATIONS IN ORDER THAT THESE OPERATIONS AND THE CONSTRUCTION OF THIS PROJECT MAY PROGRESS IN A REASONABLE MANNER. THE COST OF ANY NECESSARY RELOCATIONS SHALL BE INCURRED BY THE OWNER UNLESS NOTED OTHERWISE AND IF PRIOR AGREEMENTS ARE NOT IN PLACE.
3. THE FOLLOWING UTILITY COMPANIES MAY HAVE FACILITIES LOCATED WITHIN THE LIMITS OF CONSTRUCTION WHICH MAY REQUIRE ADJUSTMENT, RELOCATION OR REMOVAL. ALL ARE MEMBERS OF J.U.L.I.E. UNLESS NOTED OTHERWISE.

AMEREN ILLINOIS (GAS AND GAS) 1050 WEST BOULEVARD BELLEVILLE, IL 62221 (618) 236-6279	CHARTER COMMUNICATIONS (CABLE TV) 20 CARLYLE PLAZA DR BELLEVILLE, IL 62221 (618) 663-3075
FRONTIER (COMMUNICATIONS) 111 STATE STREET MASCOUTAH, IL 62258 (618) 566-9815	CITY OF MASCOUTAH (WATER, SANITARY, STORM, & ELECTRIC) 3 WEST MAIN STREET MASCOUTAH, IL 62258 (618) 566-2964

CLEARWAVE AND FIDELITY (COMMUNICATIONS)
2 N VINE STREET
HARRISBURG, IL 62946
(912) 755-1527

THE ABOVE INFORMATION REPRESENTS THE BEST INFORMATION AVAILABLE TO THE OWNER AND IS ONLY INCLUDED FOR THE CONVENIENCE OF THE BIDDER. IT IS UNDERSTOOD AND AGREED THAT THE CONTRACTOR HAS TAKEN THE FOREGOING INTO CONSIDERATION IN PREPARING HIS/HER BID, AND NO ADDITIONAL COMPENSATION WILL BE ALLOWED FOR ANY DELAYS OR INCONVENIENCE CAUSED BY SAME.

JOINT UTILITY LOCATING INFORMATION FOR EXCAVATIONS
800-892-0123

GENERAL

1. THE CONTRACTOR SHALL VERIFY ALL DIMENSIONS AND CONDITIONS IN THE FIELD PRIOR TO ORDERING MATERIALS AND COMMENCING CONSTRUCTION.
2. THE CONTRACTOR SHALL CONFINE ALL OPERATIONS TO THE CONSTRUCTION LIMITS LINE SHOWN ON THE PLANS. ANY AREA DISTURBED BEYOND THESE LIMITS SHALL BE RESTORED TO ITS ORIGINAL CONDITION AT THE CONTRACTOR'S EXPENSE.
3. THE CONTRACTOR SHALL FERTILIZE, SEED AND MULCH ALL EARTH SURFACES DISTURBED BY CONSTRUCTION. FERTILIZER, SEEDING AND MULCH WITHIN THE CONSTRUCTION LIMITS WILL BE PAID FOR AS PROVIDED IN THE CONTRACT. FERTILIZER, SEEDING AND MULCH OUTSIDE THESE LIMITS WILL NOT BE MEASURED FOR PAYMENT. SEE THE SEEDING SCHEDULE FOR ESTIMATED PLAN QUANTITIES.
4. WHERE TREE REMOVAL CONFLICTS WITH EXISTING UNDERGROUND UTILITIES, THE CONTRACTOR SHALL CUT THE TREE OFF AT THE GROUND LINE AND GRIND THE STUMP AS DIRECTED BY THE ENGINEER. THE COST OF THIS WORK WILL NOT BE PAID FOR SEPARATELY, BUT SHALL BE CONSIDERED AS INCLUDED IN THE CONTRACT UNIT PRICE FOR THE VARIOUS TREE REMOVAL ITEMS INCLUDED IN THE CONTRACT.

PAVING

1. AT VARIOUS LOCATIONS, IT MAY BE NECESSARY TO TRANSITION PROPOSED COMBINATION CONCRETE CURB AND GUTTER TO MEET EXISTING CURBS OR GUTTERS. THE MINIMUM LENGTH OF TRANSITIONAL COMBINATION CURB AND GUTTER SHALL BE 10 FEET, UNLESS DIRECTED OTHERWISE BY THE ENGINEER.

DRAINAGE

1. STORM SEWER INVERTS SHOWN ON THE PLANS HAVE BEEN CALCULATED TO THE CENTER OF THE STRUCTURE. THE STORM SEWER SLOPES SHOWN ON THE PLANS ARE THE PERCENT GRADE FROM CENTER TO CENTER OF STRUCTURE. THE LENGTH OF STORM SEWERS SHOWN ON THE PLANS IS THE DISTANCE FROM CENTER TO CENTER OF STRUCTURE. STORM SEWER WILL BE MEASURED AND PAID FOR AS SPECIFIED IN ARTICLES 550.09 AND 550.10 OF THE "STANDARD SPECIFICATIONS FOR ROAD AND BRIDGE CONSTRUCTION."
2. THE OFFSETS TO ALL INLETS AND MANHOLES ARE GIVEN TO THE CENTER OF THE OPENING AT THE BASE OF THE FRAME AND GRATE OR LID. CONCENTRIC DRAINAGE STRUCTURES WERE ASSUMED WHEN CALCULATING THESE DIMENSIONS.
3. THE CONTRACTOR SHALL INCLUDE THE COST OF MAKING CONNECTIONS TO EXISTING DRAINAGE STRUCTURES IN THE CONTRACT UNIT PRICE FOR THE STORM SEWER ITEMS INVOLVED.

PAVEMENT MARKING

1. THE PAVEMENT MARKING LOCATIONS SHOWN IN THE PLANS ARE APPROXIMATE. PROPOSED CROSSWALKS AND STOP BARS SHALL BE ADJUSTED AS DIRECTED BY THE ENGINEER, IF NECESSARY, TO MATCH FIELD CONDITIONS.

APPROXIMATE QUANTITIES

1. THE FOLLOWING ITEMS AND APPROXIMATE QUANTITIES ARE INCLUDED IN THE "SUMMARY OF QUANTITIES" IN ORDER TO ESTABLISH A UNIT COST FOR WORK WHICH MAY BE REQUIRED TO CONSTRUCT THIS SECTION. THE ACTUAL QUANTITY OF EACH ITEM SHALL BE DETERMINED BY THE ENGINEER IN THE FIELD.

POTHOLING	5	EACH
TOPSOIL F & P SPL	30	CU YD

COMMITMENTS

NONE

ABBREVIATIONS

AD	ALGEBRAIC DIFFERENCE IN GRADE
ADJ	ADJACENT
AGG	AGGREGATE
AI	AREA INLET
ALT	ALTERNATE
APPROX	APPROXIMATE
BC	BACK OF CURB
BIT	BITUMINOUS
BLDG	BUILDING
BLRD	BOLLARD
BM	BENCHMARK
BO	BY OTHERS (USED IN CONJUNCTION WITH TBA & TBR)
BVCE	BEGINNING OF VERTICAL CURVE ELEVATION
BVCS	BEGINNING OF VERTICAL CURVE STATION
BW	BOTTOM OF WALL
CATV	CABLE TELEVISION
CB	CATCH BASIN
CI	CURB INLET
CIPP	CURED IN-PLACE PIPE (LINER)
CJ	CONTROL JOINT
CL	CENTERLINE
CLF	CHAIN LINK FENCE
CMF	CORRUGATED METAL PIPE
CMU	CONCRETE MASONRY BLOCK
CO	CLEANOUT
COM	COMMUNICATIONS
CONC	CONCRETE
CONST	CONSTRUCTION
CP	CONTROL POINT

CTR	CENTER
CY	CUBIC YARD
DIA	DIAMETER
DND	DO NOT DISTURB
DS	DOWN SPOUT
DTL	DETAIL
E	EAST
EA	EACH
EJ	EXPANSION JOINT
EL	ELEVATION
ELEC	ELECTRIC
ENGR	ENGINEER
EOP	EDGE OF PAVEMENT
EQ	EQUAL
ESMT	EASEMENT
ETR	EXISTING TO REMAIN
EVCE	END OF VERTICAL CURVE ELEVATION
EVCS	END OF VERTICAL CURVE STATION
EX	EXISTING
EXP	EXPANSION
FES	FLARED END SECTION
FF	FINISHED FLOOR
FL	FLOW LINE
FO	FIBER OPTIC
FT	FEET
FV	FIELD VERIFY
GI	GRATE INLET
GND	GROUND
HDPE	HIGH DENSITY POLYETHYLENE
HMA	HOT-MIX-ASPHALT
HT	HEIGHT
HVAC	HEATING/ VENTILATION/AIR

ID	CONDITIONING
IN	INSIDE DIAMETER
INV	INCHES
JB	JUNCTION BOX
K	LENGTH OF VERTICAL CURVE PER PERCENT GRADE DIFFERENCE
LF	LINEAR FEET
MAT	MATERIAL
MAX	MAXIMUM
MECH	MECHANICAL
MH	MANHOLE
MIN	MINIMUM
MISC	MISCELLANEOUS
N	NORTH
NF	NOW OR FORMERLY
NIC	NOT IN CONTRACT
NO	NUMBER
NTS	NOT TO SCALE
OC	OIL AND CHIP
OC	ON CENTER
OD	OUTSIDE DIAMETER
PERM	PERMANENT
PL	PROPERTY LINE
PVC	POLYVINYL CHLORIDE PIPE
PVI	POINT OF VERTICAL INTERSECTION
PVMT	PAVEMENT
QTY	QUANTITY
R	RADIUS
RCP	REINFORCED CONCRETE PIPE
RD	ROOF DRAIN
ROW	RIGHT OF WAY

LEGEND

EX	NEW	
		SIGN (TRAFFIC)
		SIGN (ADVERTISEMENT)
		TELEPHONE / POWER POLE
		LIGHT POLE
		ANCHOR POLE
		GUY WIRE
		FIRE HYDRANT
		GAS VALVE
		WATER VALVE
		ELECTRIC METER
		GAS METER
		TELEPHONE BOX
		ELECTRIC BOX
		MAILBOX
		CLEANOUT

EX	NEW	
		AREA INLET
		CATCH BASIN
		CURB INLET
		MANHOLE
		TRAFFIC SIGNAL BOX
		TRAFFIC SIGNAL
		HANDHOLE
		SHRUB
		TREE (DECIDUOUS)
		TREE (EVERGREEN)
		CONTROL POINT
		BENCHMARK

LINETYPES

EX		NEW
	WATER LINE	
	GAS LINE	
	TELEPHONE LINE	
	OVERHEAD ELECTRIC LINE	
	ELECTRIC LINE	
	FIBER OPTIC LINE	
	STORM SEWER	
	SANITARY SEWER	
	FENCE LINE	
	TREE LINE	
	CONTOUR LINE	
	LIMITS OF CONST	

FILE NAME = 222157.008 - COVER SHEET.DWG

 <div>OATES ASSOCIATES www.oatesassociates.com ILLINOIS DESIGN FIRM LICENSE NO.: 184.001115</div>	USER NAME = CAMERON RAMIREZ	DESIGNED - BRB	REVISED -	CITY OF MASCOUTAH	GENERAL NOTES, UTILITIES, & COMMITMENTS			F.A.U RTE.	SECTION	COUNTY	TOTAL SHEETS	SHEET NO.
		DRAWN - CJR	REVISED -					9380	24-00031-00-SW	ST. CLAIR	24	2
	PLOT SCALE = 1' = 1'	CHECKED - TLC	REVISED -		SRTS MASCOUTAH BUMP-OUTS			CONTRACT NO. 97887				
	PLOT DATE = 2025-12-22	DATE - 2025-12-22	REVISED -		SCALE:			SHEET NO. 1 OF 1 SHEETS			STA. TO STA.	

FED. ROAD DIST. NO. - ILLINOIS

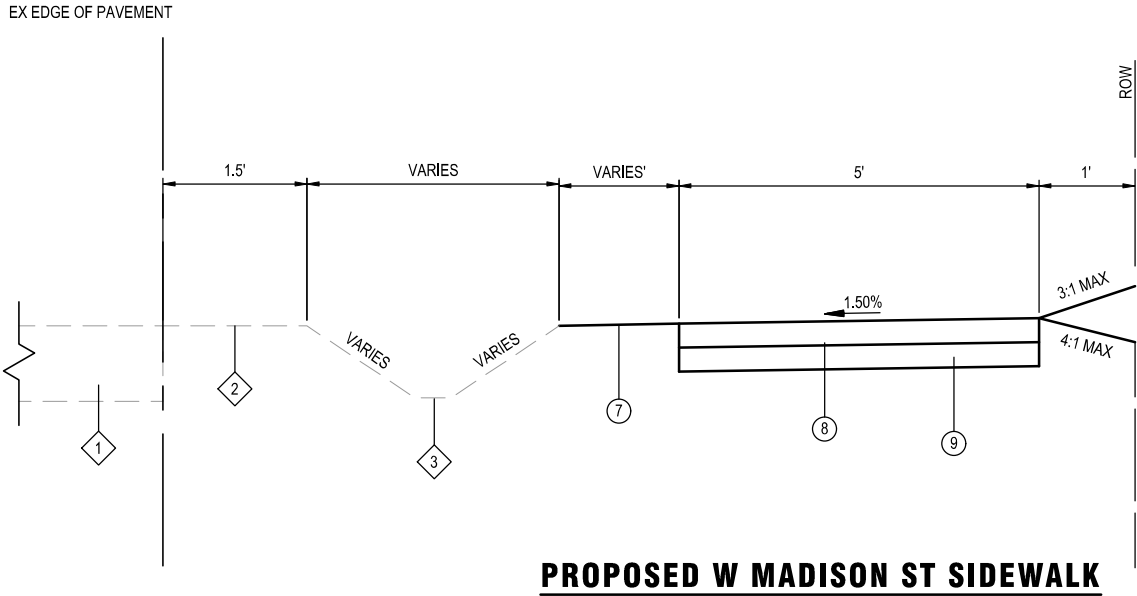
FILE NAME = 222157.008 - COVER SHEET.DWG

SI	SP	CODE NO.	ITEM	UNIT	TOTAL QUANTITY
	*	20100210	TREE REMOVAL (OVER 15 UNITS DIAMETER)	UNIT	30
	*	20800150	TRENCH BACKFILL	CU YD	20
	*	21400100	GRADING AND SHAPING DITCHES	FOOT	20
		28000500	INLET AND PIPE PROTECTION	EACH	15
		31101200	SUBBASE GRANULAR MATERIAL, TYPE B 4"	SQ YD	274
		42400100	PCC CONCRETE SIDEWALK, 4 INCH	SQ FT	2083
		42400300	PCC CONCRETE SIDEWALK, 6 INCH	SQ FT	380
	*	42400800	DETECTABLE WARNINGS	SQ FT	102
		44000100	PAVEMENT REMOVAL	SQ YD	87
		44000500	COMBINATION CURB AND GUTTER REMOVAL	FOOT	193
		44000600	SIDEWALK REMOVAL	SQ FT	1881
	*	44201745	CLASS D PATCHES, TYPE III, 8 INCH	SQ YD	21
	*	50105220	PIPE CULVERT REMOVAL	FOOT	20

SI	SP	CODE NO.	ITEM	UNIT	TOTAL QUANTITY
		54248510	CONCRETE COLLAR	CU YD	3
	*	55100700	STORM SEWER REMOVAL 15"	FOOT	24
	*	60218500	MANHOLES, TYPE A, 4'-DIAMETER, TYPE 3 FRAME AND GRATE	EACH	1
		60604400	CONCRETE CURB AND GUTTER, TYPE B-6.18	FOOT	250
		67100100	MOBILIZATION	L SUM	1
*		72000100	SIGN PANEL TYPE 1	SQ FT	132
		72400100	REMOVE SIGN PANEL ASSEMBLY - TYPE A	EACH	2
*		72900100	METAL POST - TYPE A	FOOT	56
*		73000100	WOOD SIGN SUPPORT	FOOT	56
*		78000200	THERMOPLASTIC PAVEMENT MARKING - LINE 4"	FOOT	172
*		78000600	THERMOPLASTIC PAVEMENT MARKING - LINE 12"	FOOT	13
*	*	78000650	THERMOPLASTIC PAVEMENT MARKING - LINE 24"	FOOT	371
	*	550A0050	STORM SEWERS, CLASS A, TYPE 1 12"	FOOT	58

NOTES: SP - SEE PROJECT SPECIFIC SPECIAL PROVISIONS
SI - SPECIALTY ITEM

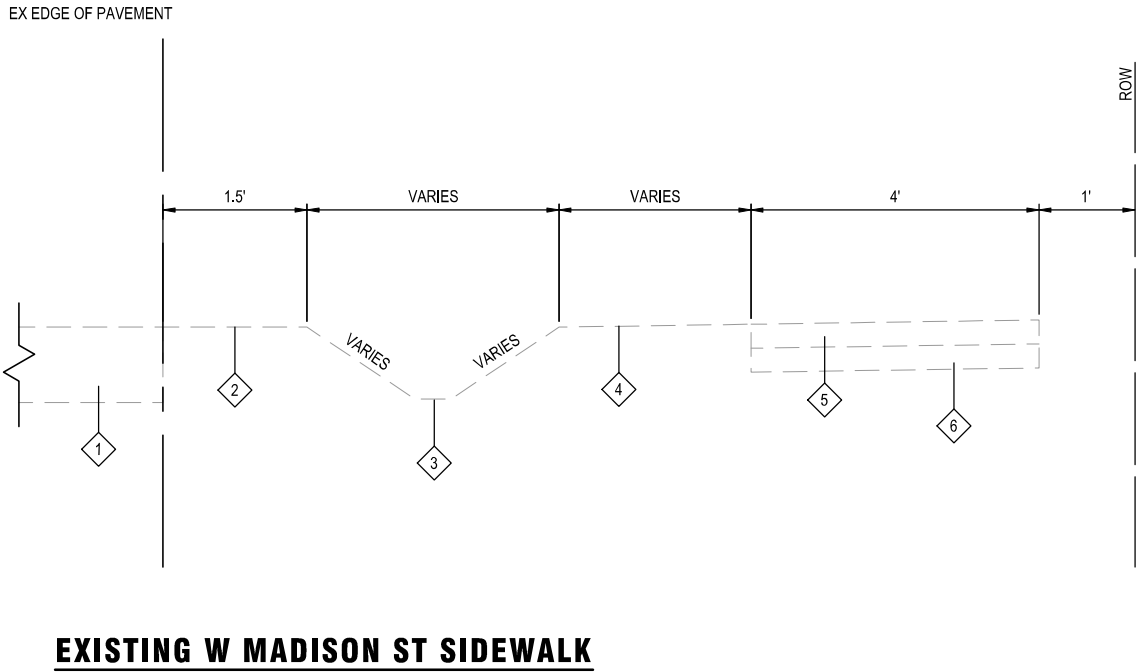
FILE NAME = 222157.008 - SRTS BUMP-OUT DESIGN.DWG



STA. 100+24.56 TO STA. 102+65.40

TYPICAL SECTION LEGEND

- 1 EXISTING OIL AND CHIP PAVEMENT
- 2 EXISTING SHOULDER
- 3 EXISTING EARTHEN DITCH
- 4 EXISTING TOPSOIL
- 5 EXISTING PC CONC SIDEWALK
- 6 EXISTING SUB GRAN MAT B
- 7 PROPOSED TOPSOIL FURNISH & PLACE
- 8 PROPOSED PC CONC SIDEWALK 4"
- 9 PROPOSED SUB GRAN MAT B 4"



STA. 100+24.56 TO STA. 102+65.40

LOCATION	SURFACE COURSE
MIXTURE USE	HMA SURFACING
THICKNESS	8"
AC/PG	PG 64-22
RAP % (MAX)	5%
DESIGN AIR VOIDS	4.0% @ NDES = 70
MIX COMPOSITION	IL-9.5
FRICTION AGG	MIXTURE "C"
MIXTURE WEIGHT	112.0 LB/SQ YD/IN
QMP	QC/QA
SUBLOT SIZE	N/A
MTD	N/A

HMA MIXTURES TABLE



USER NAME =	CAMERON RAMIREZ	DESIGNED -	BRB	REVISED -	
PLOT SCALE =	1' = 1'	DRAWN -	CJR	REVISED -	
PLOT DATE =	2025-12-22	CHECKED -	TLC	REVISED -	
		DATE -	2025-12-22	REVISED -	

CITY OF MASCOUTAH

TYPICAL SECTIONS

SCALE: SHEET NO. 1 OF 1 SHEETS STA. _____ TO STA. _____

F.A.U RTE.	SECTION	COUNTY	TOTAL SHEETS	SHEET NO.
9380	24-00031-00-SW	ST. CLAIR	24	5
SRTS MASCOUTAH BUMP-OUTS		CONTRACT NO. 97887		
FED. ROAD DIST. NO. -		ILLINOIS		

SIDEWALK

STATION	STATION	OFFSET	SUB GRAN MAT B 4 (SQ YD)	PC CONC SIDEWALK 4 (SQ FT)	PC CONC SIDEWALK 6 (SQ FT)	DETECTABLE WARNINGS (SQ FT)	SIDEWALK REM (SQ FT)
10+00	10+50	RT	10	68	22	10	77
11+75	12+40	RT	24	124	91	18	148
12+00	12+40	LT	17	71	82	18	178
16+40	17+65	RT	49	324	117	36	338
100+15	103+50	RT	174	1497	68	20	1141
TOTAL			274	2,083	380	102	1,881

SIDEWALK NOTES:

1. PRIOR TO CONSTRUCTION, THE CONTRACTOR SHALL CONTACT EACH PROPERTY OWNER AND VERIFY THE LOCATION AND WIDTH OF ALL APPROACH WALKWAYS.
2. SEE CONSTRUCTION DETAILS SHEET AND HIGHWAY STANDARD 424001 FOR CURB RAMP DETAILS.

PAVEMENT MARKING

STATION	STATION	OFFSET	THPL PVT MK LINE 4 (YELLOW) (NOTE 1) (FOOT)	THPL PVT MK LINE 12 (WHITE) (NOTE 1) (FOOT)	THPL PVT MK LINE 24 (WHITE/PURPLE) (NOTE 1) (FOOT)
10+36	10+62	RT			65
12+00	12+20	LT/RT			117
16+00	22+96	CL	172		
16+75	17+00	LT/RT			104
16+90	17+45	RT		13	85
TOTAL			172	13	371

PAVEMENT MARKING NOTES:

1. SEE HIGHWAY STANDARD 780001 FOR PAVEMENT MARKING DETAILS.

SEEDING

STATION	STATION	OFFSET	SEEDING CL 1A (SPECIAL) (ACRE)	NITROGEN FERT NUTR (NOTE 1) (POUND)	PHOSPHORUS FERT NUTR (NOTE 1) (POUND)	POTASSIUM FERT NUTR (NOTE 1) (POUND)	MULCH METHOD 2 (ACRE)
10+00	10+50	RT	0.010	1	1	1	0.010
11+75	12+40	RT	0.007	1	1	1	0.007
12+00	12+40	LT	0.003	0	0	0	0.003
16+40	17+65	RT	0.013	1	1	1	0.013
100+15	103+50	RT	0.024	2	2	2	0.024
TOTAL			0.25	6	6	6	0.25

SEEDING NOTES:

1. FERTILIZER AND MULCH QUANTITIES ARE SHOWN FOR INFORMATION ONLY.

CURB & GUTTER

STATION	STATION	OFFSET	COMB CURB GUTTER REM (FOOT)	COMB CC & G TB6.18 (FOOT)
10+00	10+50	RT	44	64
11+75	12+40	RT	45	50
12+00	12+40	LT	15	32
16+40	17+65	RT	89	104
TOTAL			193	250

CURB & GUTTER NOTES:

1. THE TRANSITION FROM CURB AND GUTTER SPECIAL TO BARRIER CURB SHALL BE IN THE LUMP SUM PRICE.

SIGN

STATION	OFFSET	TYPE	DESCRIPTION	COLORS	SIZE (IN X IN)	SIGN PANEL T1 (SQ FT)	REMOV SIN PAN ASSY TA (EACH)	WOOD SIN SUPPORT (FOOT)	METAL POST TY A (FOOT)
09+36	RT	S1-1	SCHOOL CROSSING	YELLOW - GREEN W/BLACK	36 X 36	9.0			14
09+36	RT	W16-9P	AHEAD	YELLOW - GREEN W/BLACK	24 X 12	2.0			
12+03	LT	S1-1	SCHOOL CROSSING	YELLOW - GREEN W/BLACK	36 X 36	9.0	1	14	
12+03	LT	W16-7P	DOWNWARD DIAGONAL ARROW	YELLOW - GREEN W/BLACK	21 X 15	2.25			
12+03	LT	S1-1	SCHOOL CROSSING	YELLOW - GREEN W/BLACK	36 X 36	9.0			
12+03	LT	W16-7P	DOWNWARD DIAGONAL ARROW	YELLOW - GREEN W/BLACK	21 X 15	2.25			
12+03	RT	S1-1	SCHOOL CROSSING	YELLOW - GREEN W/BLACK	36 X 36	9.0	1	14	
12+03	RT	W16-7P	DOWNWARD DIAGONAL ARROW	YELLOW - GREEN W/BLACK	21 X 15	2.25			
12+03	RT	S1-1	SCHOOL CROSSING	YELLOW - GREEN W/BLACK	36 X 36	9.0			
12+03	RT	W16-7P	DOWNWARD DIAGONAL ARROW	YELLOW - GREEN W/BLACK	21 X 15	2.25			
14+46	LT	S1-1	SCHOOL CROSSING	YELLOW - GREEN W/BLACK	36 X 36	9.0			14
14+46	LT	W16-9P	AHEAD	YELLOW - GREEN W/BLACK	24 X 12	2.0			
14+81	RT	S1-1	SCHOOL CROSSING	YELLOW - GREEN W/BLACK	36 X 36	9.0			14
14+81	RT	W16-9P	AHEAD	YELLOW - GREEN W/BLACK	24 X 12	2.0			
16+81	LT	S1-1	SCHOOL CROSSING	YELLOW - GREEN W/BLACK	36 X 36	9.0		14	
16+81	LT	W16-7P	DOWNWARD DIAGONAL ARROW	YELLOW - GREEN W/BLACK	21 X 15	2.25			
16+81	LT	S1-1	SCHOOL CROSSING	YELLOW - GREEN W/BLACK	36 X 36	9.0			
16+81	LT	W16-7P	DOWNWARD DIAGONAL ARROW	YELLOW - GREEN W/BLACK	21 X 15	2.25			
16+81	RT	S1-1	SCHOOL CROSSING	YELLOW - GREEN W/BLACK	36 X 36	9.0		14	
16+81	RT	W16-7P	DOWNWARD DIAGONAL ARROW	YELLOW - GREEN W/BLACK	21 X 15	2.25			
16+81	RT	S1-1	SCHOOL CROSSING	YELLOW - GREEN W/BLACK	36 X 36	9.0			
16+81	RT	W16-7P	DOWNWARD DIAGONAL ARROW	YELLOW - GREEN W/BLACK	21 X 15	2.25			
18+84	LT	S1-1	SCHOOL CROSSING	YELLOW - GREEN W/BLACK	36 X 36	9.0			14
18+84	LT	W16-9P	AHEAD	YELLOW - GREEN W/BLACK	24 X 12	2.0			
TOTAL						134.00	2	56	56

EARTHWORK

STATION	STATION	OFFSET	TOP SOIL F & P SPL (CU YD)
10+00	10+50	RT	6
11+75	12+40	RT	4
12+00	12+40	LT	2
16+40	17+65	RT	5
100+15	103+50	RT	13
TOTAL			30

EARTHWORK NOTES:

1. THIS IS AN ESTIMATED QUANTITY AND SHALL BE PLACED AS DIRECTED BY THE ENGINEER

CITY OF MASCOUTAH

SCHEDULE OF QUANTITIES

SCALE: SHEET NO. 1 OF 1 SHEETS STA. TO STA.

F.A.U RTE.	SECTION	COUNTY	TOTAL SHEETS	SHEET NO.
9380	24-00031-00-SW	ST. CLAIR	24	6
SRTS MASCOUTAH BUMP-OUTS		CONTRACT NO. 97887		
FED. ROAD DIST. NO. -		ILLINOIS		



ILLINOIS DESIGN FIRM LICENSE NO.: 184.001115

USER NAME =	CAMERON RAMIREZ	DESIGNED -	BRB	REVISED -	
		DRAWN -	CJR	REVISED -	
PLOT SCALE =	1' = 1'	CHECKED -	TLC	REVISED -	
PLOT DATE =	2025-12-22	DATE -	2025-12-22	REVISED -	

FILE NAME = 222157.008 - COVER SHEET.DWG

FILE NAME = 222157.008 - SRT'S BUMPOUT DESIGN.DWG



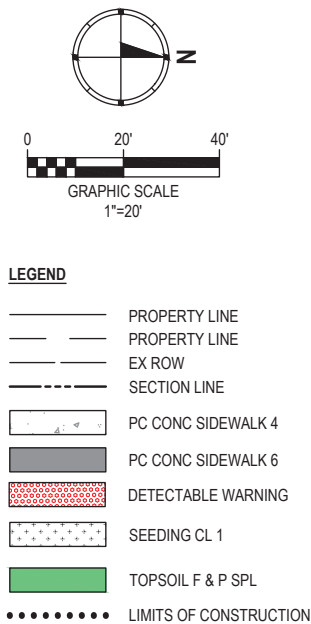
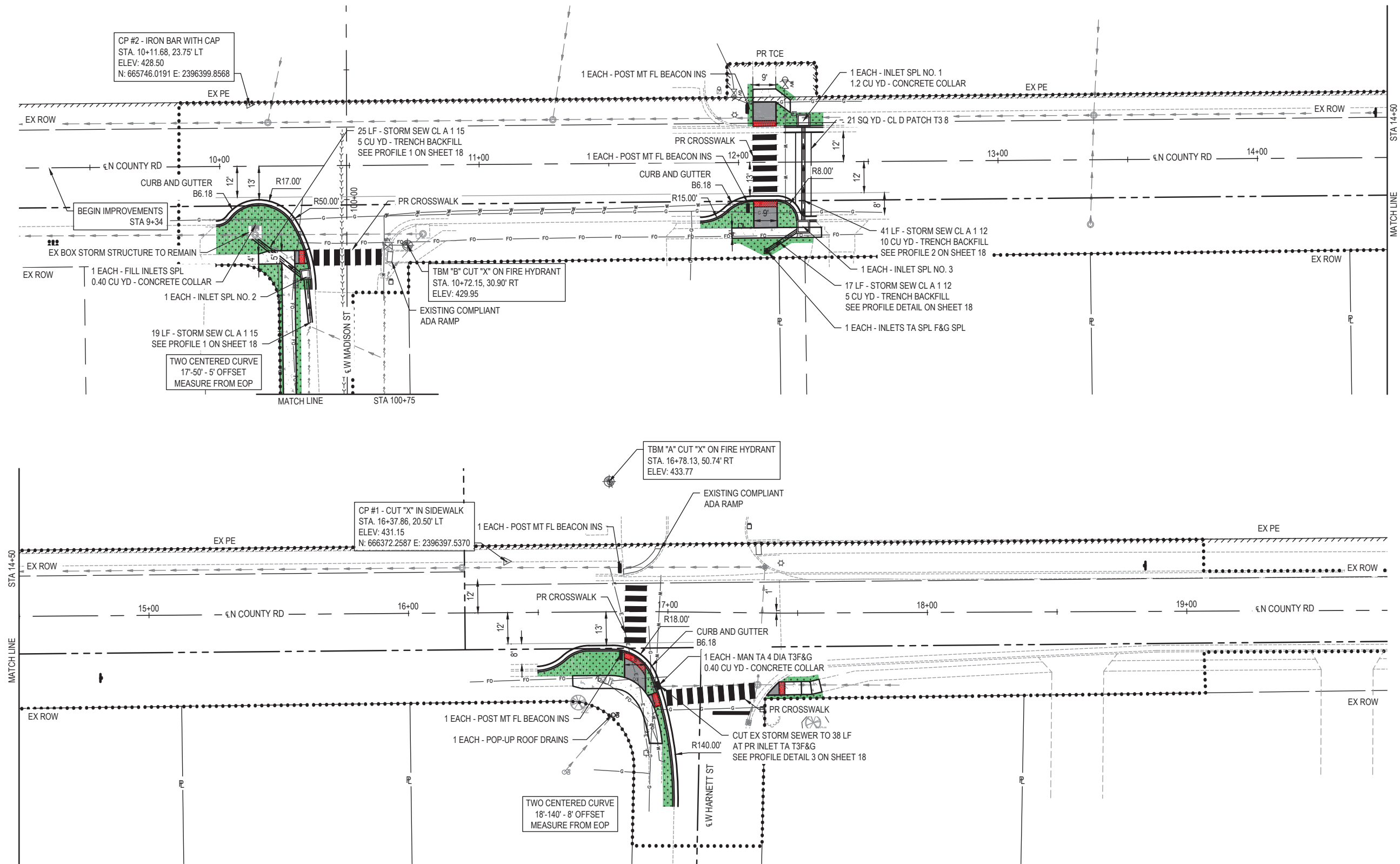
USER NAME =	CAMERON RAMIREZ	DESIGNED -	BRB	REVISED -	
PLOT SCALE =	1" = 1'	DRAWN -	CJR	REVISED -	
PLOT DATE =	2025-12-17	CHECKED -	TLC	REVISED -	
		DATE -	2025-12-17	REVISED -	

CITY OF MASCOUTAH

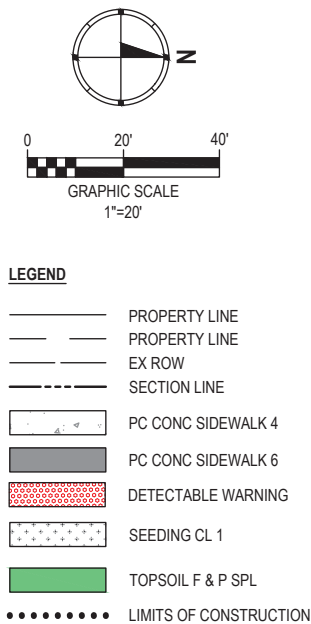
PLAN SHEETS

SCALE: 1" = 20' SHEET NO. 1 OF 2 SHEETS STA. 9 + 22.60 TO STA. 19 + 77.20

F.A.U RTE.	SECTION	COUNTY	TOTAL SHEETS	SHEET NO.
9380	24-00031-00-SW	ST. CLAIR	24	7
SRTS MASCOUTAH BUMPOUTS		CONTRACT NO. 97887		
FED. ROAD DIST. NO. -		ILLINOIS		

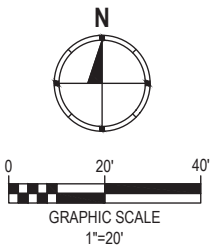
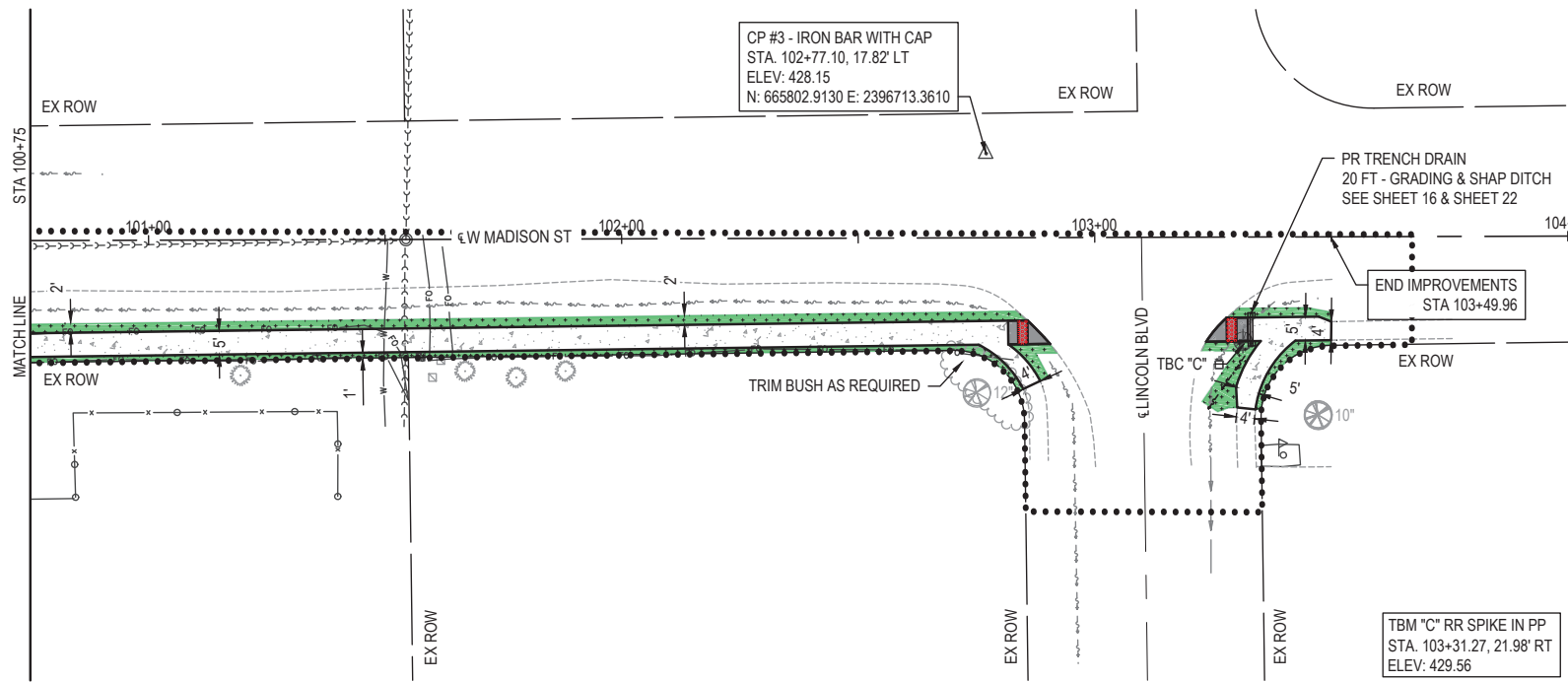


LEGEND	
	PROPERTY LINE
	PROPERTY LINE
	EX ROW
	SECTION LINE
	PC CONC SIDEWALK 4
	PC CONC SIDEWALK 6
	DETECTABLE WARNING
	SEEDING CL 1
	TOPSOIL F & P SPL
	LIMITS OF CONSTRUCTION



LEGEND	
	PROPERTY LINE
	PROPERTY LINE
	EX ROW
	SECTION LINE
	PC CONC SIDEWALK 4
	PC CONC SIDEWALK 6
	DETECTABLE WARNING
	SEEDING CL 1
	TOPSOIL F & P SPL
	LIMITS OF CONSTRUCTION

FILE NAME = 222157.008 - SRTS BUMP-OUT DESIGN.DWG



- LEGEND**
- PROPERTY LINE
 - PROPERTY LINE
 - EX ROW
 - SECTION LINE
 - PC CONC SIDEWALK 4
 - PC CONC SIDEWALK 6
 - DETECTABLE WARNING
 - SEEDING CL 1
 - TOPSOIL F & P SPL
 - LIMITS OF CONSTRUCTION

USER NAME =	CAMERON RAMIREZ	DESIGNED -	BRB	REVISED -
		DRAWN -	CJR	REVISED -
PLOT SCALE =	1' = 1'	CHECKED -	TLC	REVISED -
PLOT DATE =	2025-12-17	DATE -	2025-12-17	REVISED -

F.A.U. RTE.	SECTION	COUNTY	TOTAL SHEETS	SHEET NO.
9380	24-00031-00-SW	ST. CLAIR	24	8
SRTS MASCOUTAH BUMP-OUTS		CONTRACT NO. 97887		
FED. ROAD DIST. NO. -		ILLINOIS		

FILE NAME = 222157.008 - SRT'S BUMPOUT DESIGN.DWG



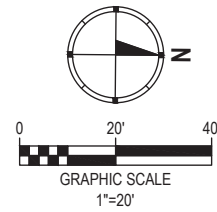
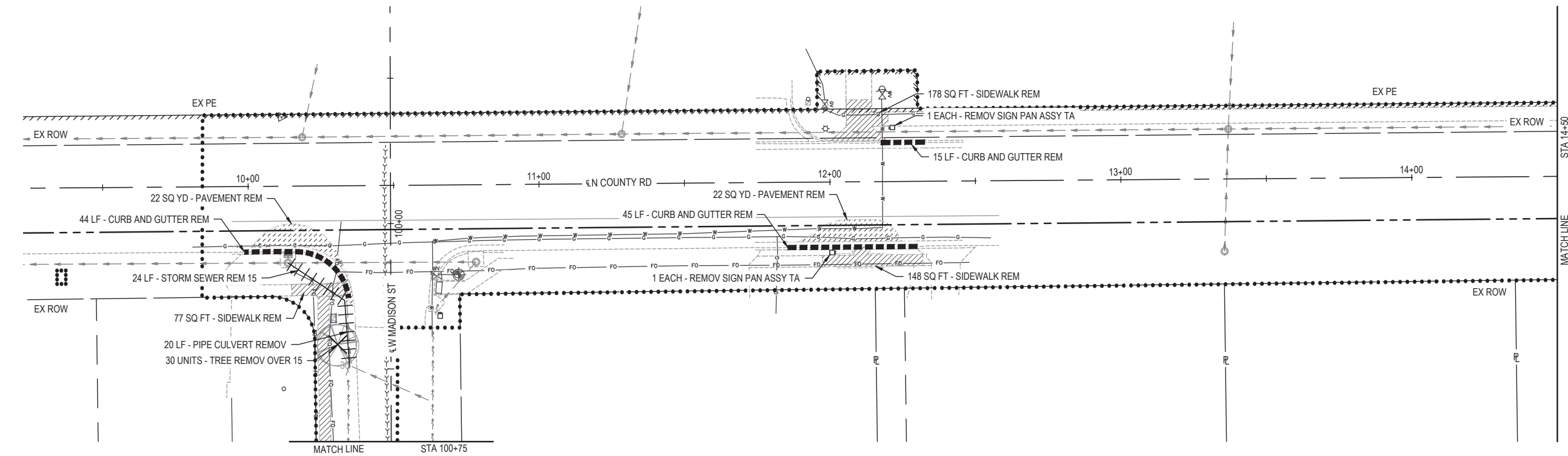
USER NAME =	CAMERON RAMIREZ	DESIGNED -	BRB	REVISED -	
PLOT SCALE =	1' = 1'	DRAWN -	CJR	REVISED -	
PLOT DATE =	2025-12-17	CHECKED -	TLC	REVISED -	
		DATE -	2025-12-17	REVISED -	

CITY OF MASCOUTAH

REMOVAL PLAN SHEETS

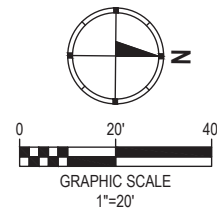
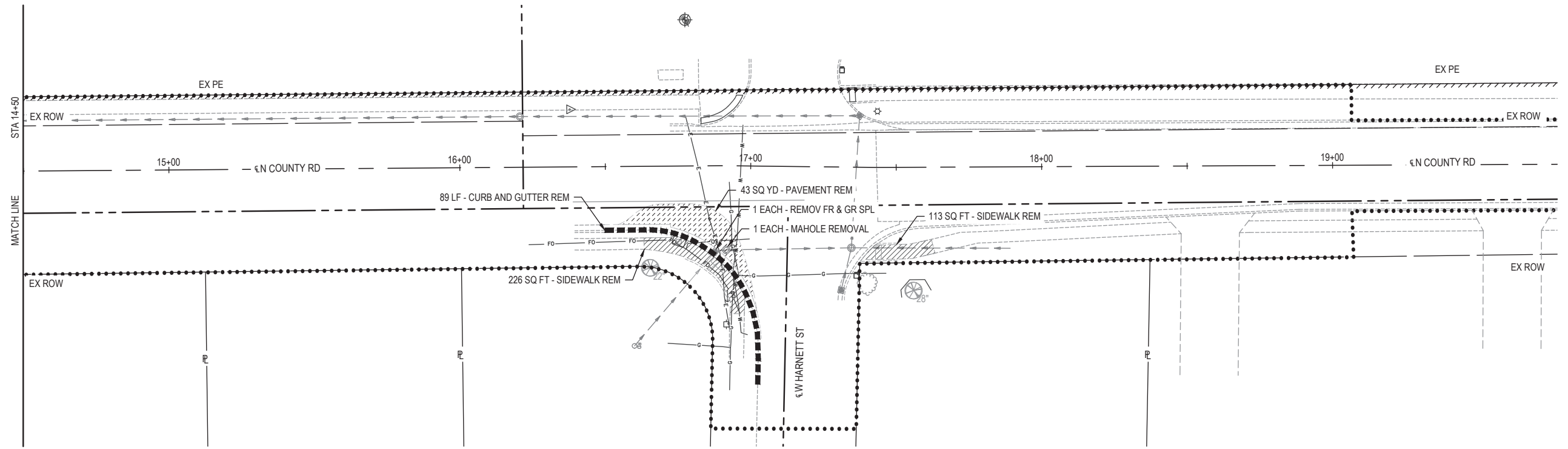
SCALE: 1" = 20' SHEET NO. 1 OF 2 SHEETS STA. TO STA.

F.A.U RTE.	SECTION	COUNTY	TOTAL SHEETS	SHEET NO.
9380	24-00031-00-SW	ST. CLAIR	24	9
SRTS MASCOUTAH BUMPOUTS		CONTRACT NO. 97887		
FED. ROAD DIST. NO.		ILLINOIS		



REMOVAL LEGEND

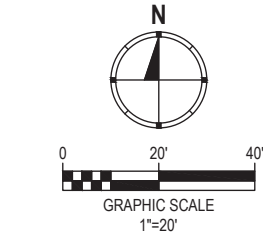
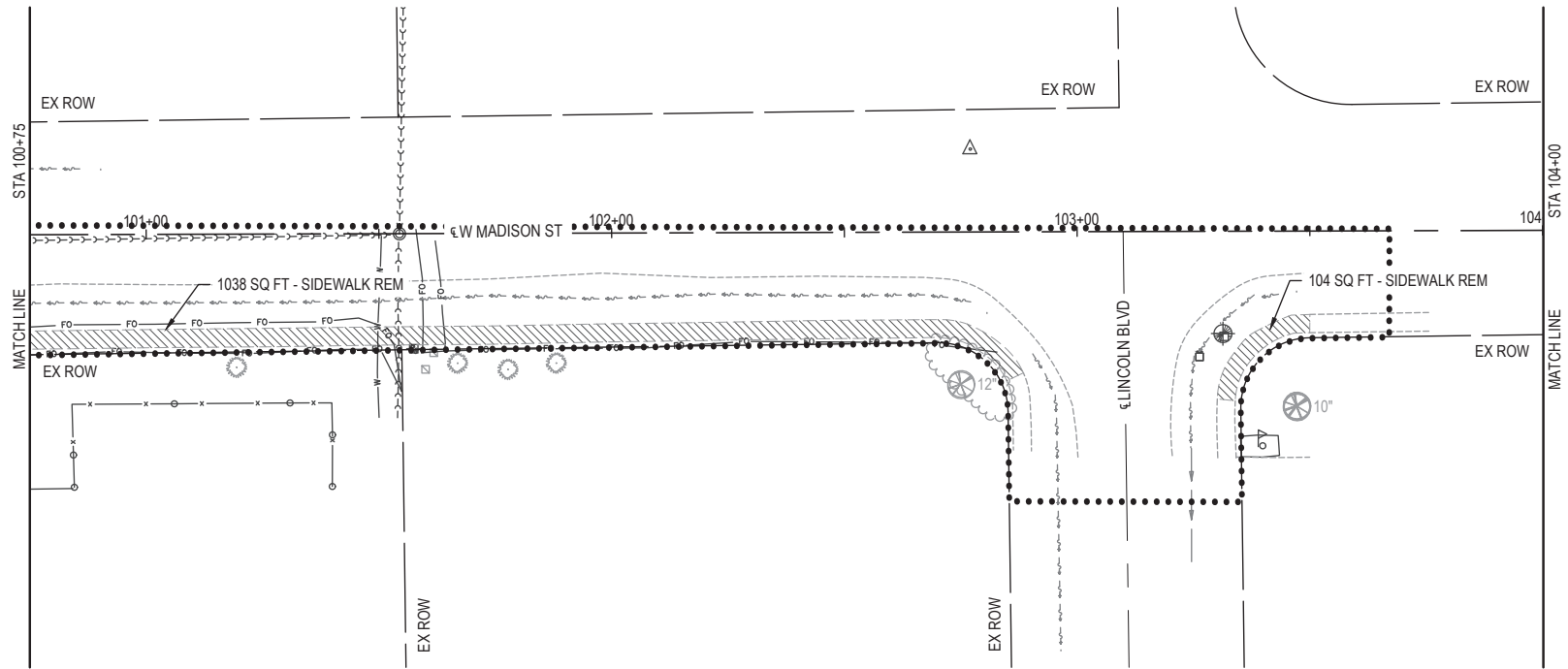
- COMB CURB GUTTER REM
- PIPE CULVERT REM
- STORM SEWER REM 15
- TREE REMOV OVER 15
- PAVEMENT REM
- SIDEWALK REM



REMOVAL LEGEND

- COMB CURB GUTTER REM
- PIPE CULVERT REM
- STORM SEWER REM 15
- TREE REMOV OVER 15
- PAVEMENT REM
- SIDEWALK REM

FILE NAME = 222157.008 - SRT'S BUMP-OUT DESIGN.DWG



REMOVAL LEGEND

- COMB CURB GUTTER REM
- PIPE CULVERT REM
- STORM SEWER REM 15
- TREE REMOV OVER 15
- PAVEMENT REM
- SIDEWALK REM



OATES ASSOCIATES
www.oatesassociates.com

ILLINOIS DESIGN FIRM LICENSE NO.: 184.001115

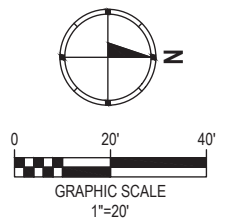
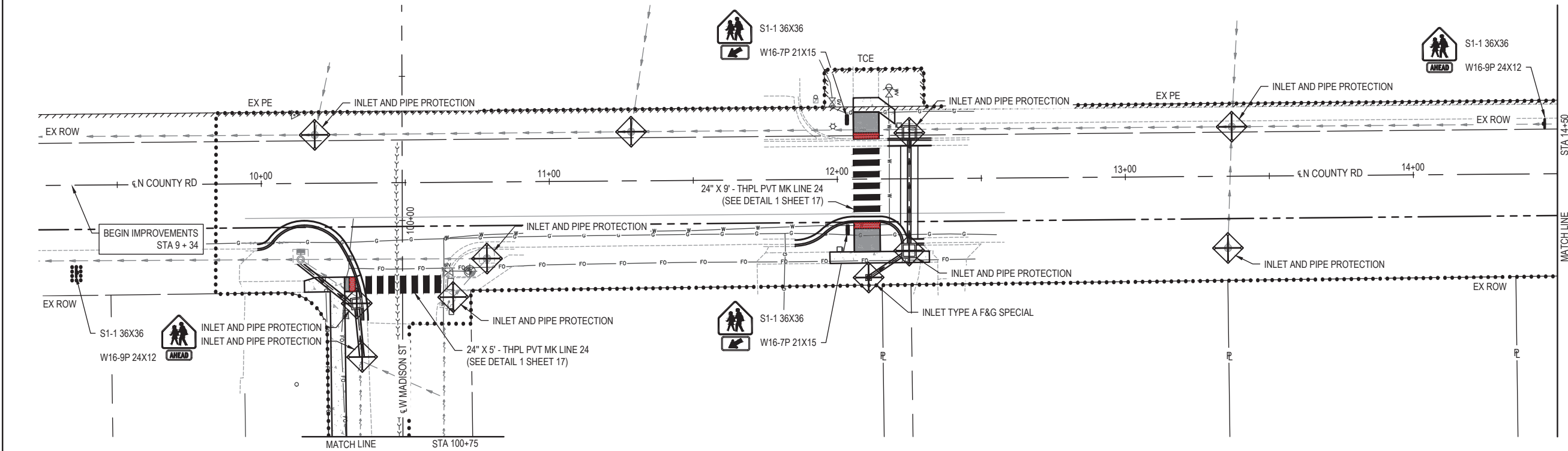
USER NAME	=	CAMERON RAMIREZ	DESIGNED	-	BRB	REVISED	-
			DRAWN	-	CJR	REVISED	-
PLOT SCALE	=	1' = 1'	CHECKED	-	TLC	REVISED	-
PLOT DATE	=	2025-12-17	DATE	-	2025-12-17	REVISED	-



CITY OF MASCOUTAH

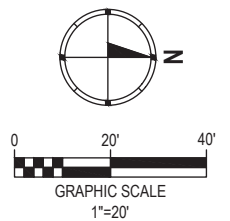
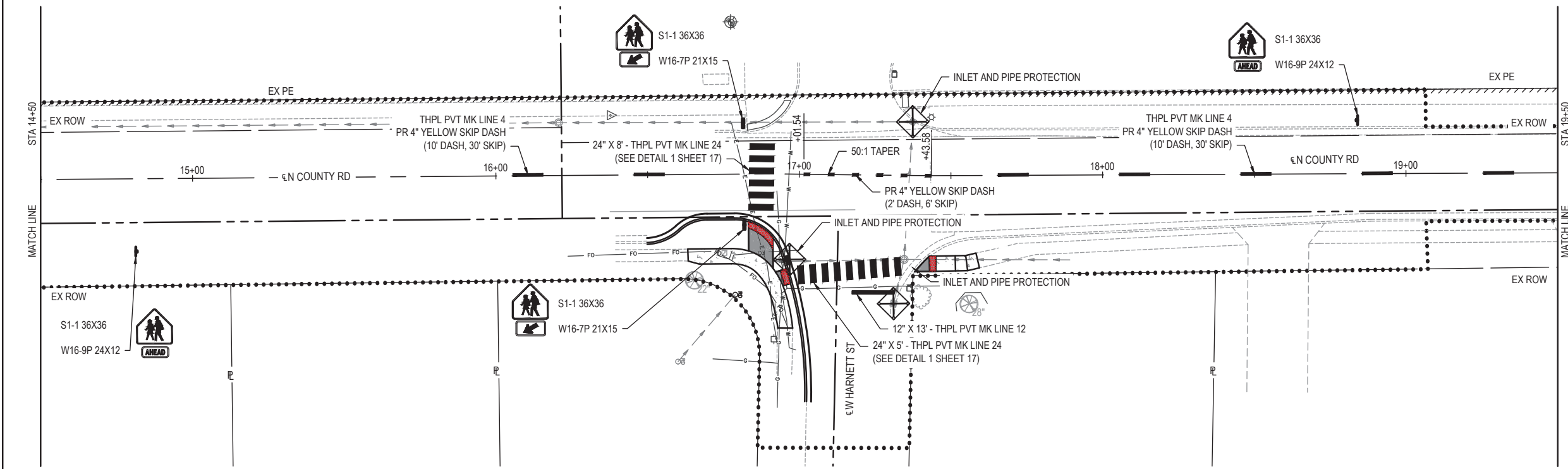
REMOVAL PLAN SHEETS		
SCALE: 1" = 20'	SHEET NO. 2 OF 2 SHEETS	STA. _____ TO STA. _____



F.A.U RTE.	SECTION	COUNTY	TOTAL SHEETS	SHEET NO.
9380	24-00031-00-SW	ST. CLAIR	24	10
SRTS MASCOUTAH BUMP-OUTS		CONTRACT NO. 97887		
FED. ROAD DIST. NO. _	ILLINOIS			

FILE NAME = 222157.008 - SRT'S BUMP-OUT DESIGN.DWG

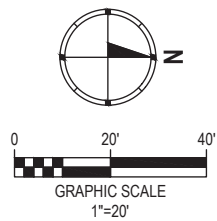
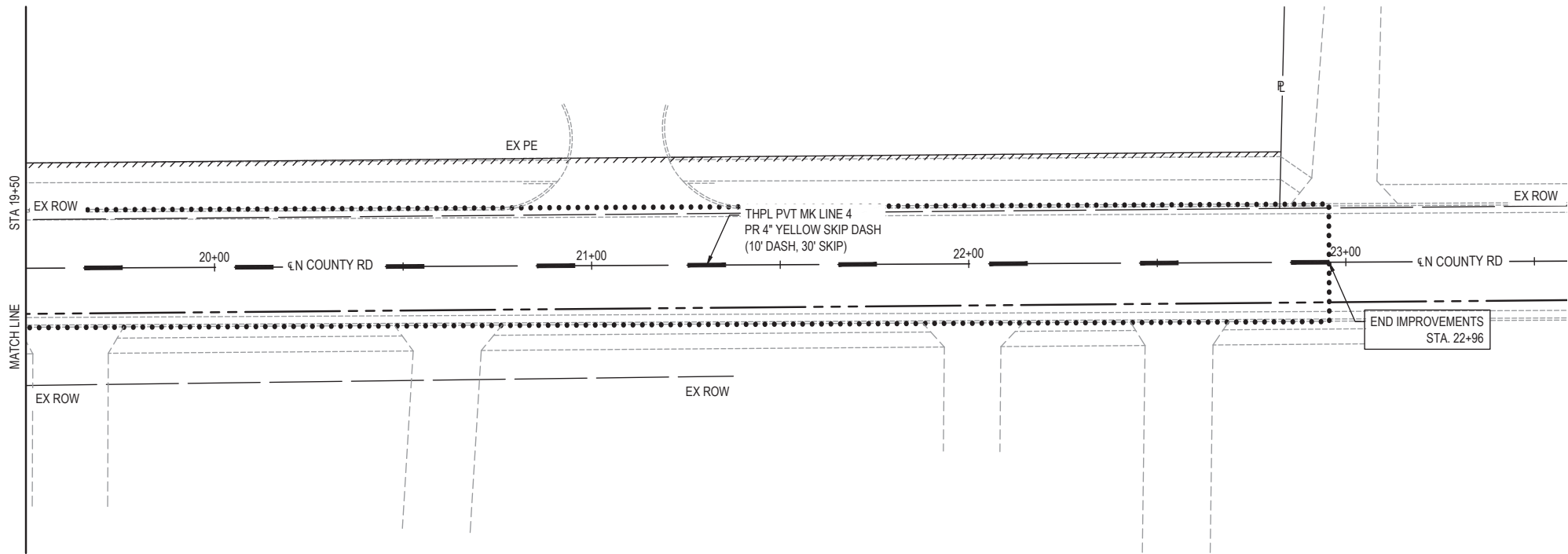




- LEGEND**
-  INLET AND PIPE PROTECTION
 -  LIMITS OF CONSTRUCTION



- LEGEND**
-  INLET AND PIPE PROTECTION
 -  LIMITS OF CONSTRUCTION

 <div>OATES ASSOCIATES www.oatesassoc.com ILLINOIS DESIGN FIRM LICENSE NO.: 184.001115</div>	USER NAME = CAMERON RAMIREZ		DESIGNED - BRB	REVISED -	CITY OF MASCOUTAH	EROSION CONTROL, PAVEMENT MARKING, AND SIGNAGE SHEETS			F A U RTE.	SECTION	COUNTY	TOTAL SHEETS	SHEET NO.		
			DRAWN - CJR	REVISED -					9380	24-00031-00-SW	ST. CLAIR	24	11		
	PLOT SCALE = 1' = 1'		CHECKED - TLC	REVISED -					SRTS MASCOUTAH BUMP-OUTS					CONTRACT NO. 97887	
	PLOT DATE = 2025-12-17		DATE - 2025-12-17	REVISED -					FED. ROAD DIST. NO. _____					ILLINOIS	
						SCALE: 1" = 20'	SHEET NO. 1 OF 3 SHEETS		STA. _____ TO STA. _____						

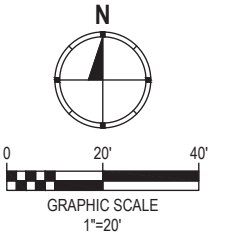
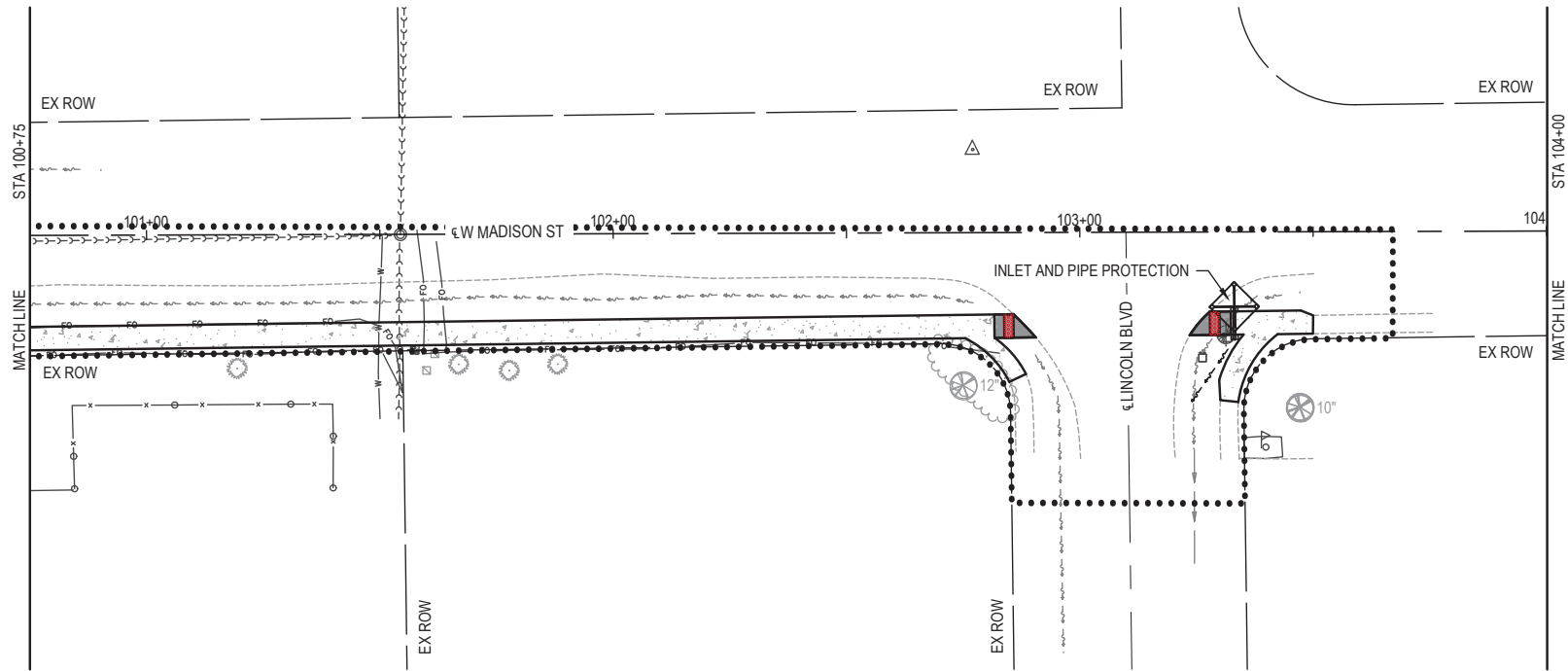




- LEGEND**
-  INLET AND PIPE PROTECTION
 -  LIMITS OF CONSTRUCTION

FILE NAME = 222157.008 - SRT'S BUMP-OUT DESIGN.DWG

 ILLINOIS DESIGN FIRM LICENSE NO.: 184.001115	USER NAME = CAMERON RAMIREZ		DESIGNED - BRB	REVISED -	CITY OF MASCOUTAH	EROSION CONTROL, PAVEMENT MARKING, AND SIGNAGE SHEETS					F.A.U. RTE.	SECTION		COUNTY	TOTAL SHEETS	SHEET NO.
	PLOT SCALE = 1' = 1'		DRAWN - CJR	REVISED -							9380	24-00031-00-SW		ST. CLAIR	24	12
	PLOT DATE = 2025-12-17		CHECKED - TLC	REVISED -		SCALE: 1" = 20'		SHEET NO. 2 OF 3 SHEETS		STA. _____ TO STA. _____		SRTS MASCOUTAH BUMP-OUTS FED. ROAD DIST. NO. _____ ILLINOIS CONTRACT NO. 97887				
	DATE = 2025-12-17		DATE - 2025-12-17	REVISED -												

FILE NAME = 222157.008 - SRTS BUMP-OUT DESIGN.DWG



- LEGEND**
-  INLET AND PIPE PROTECTION
 -  LIMITS OF CONSTRUCTION

OATES ASSOCIATES
www.oatesassociates.com
ILLINOIS DESIGN FIRM LICENSE NO.: 184.001115

USER NAME	=	CAMERON RAMIREZ	DESIGNED	-	BRB	REVISED	-
			DRAWN	-	CJR	REVISED	-
PLOT SCALE	=	1' = 1'	CHECKED	-	TLC	REVISED	-
PLOT DATE	=	2025-12-17	DATE	-	2025-12-17	REVISED	-

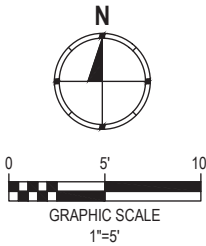
CITY OF MASCOUTAH

EROSION CONTROL, PAVEMENT MARKING, AND SIGNAGE SHEETS

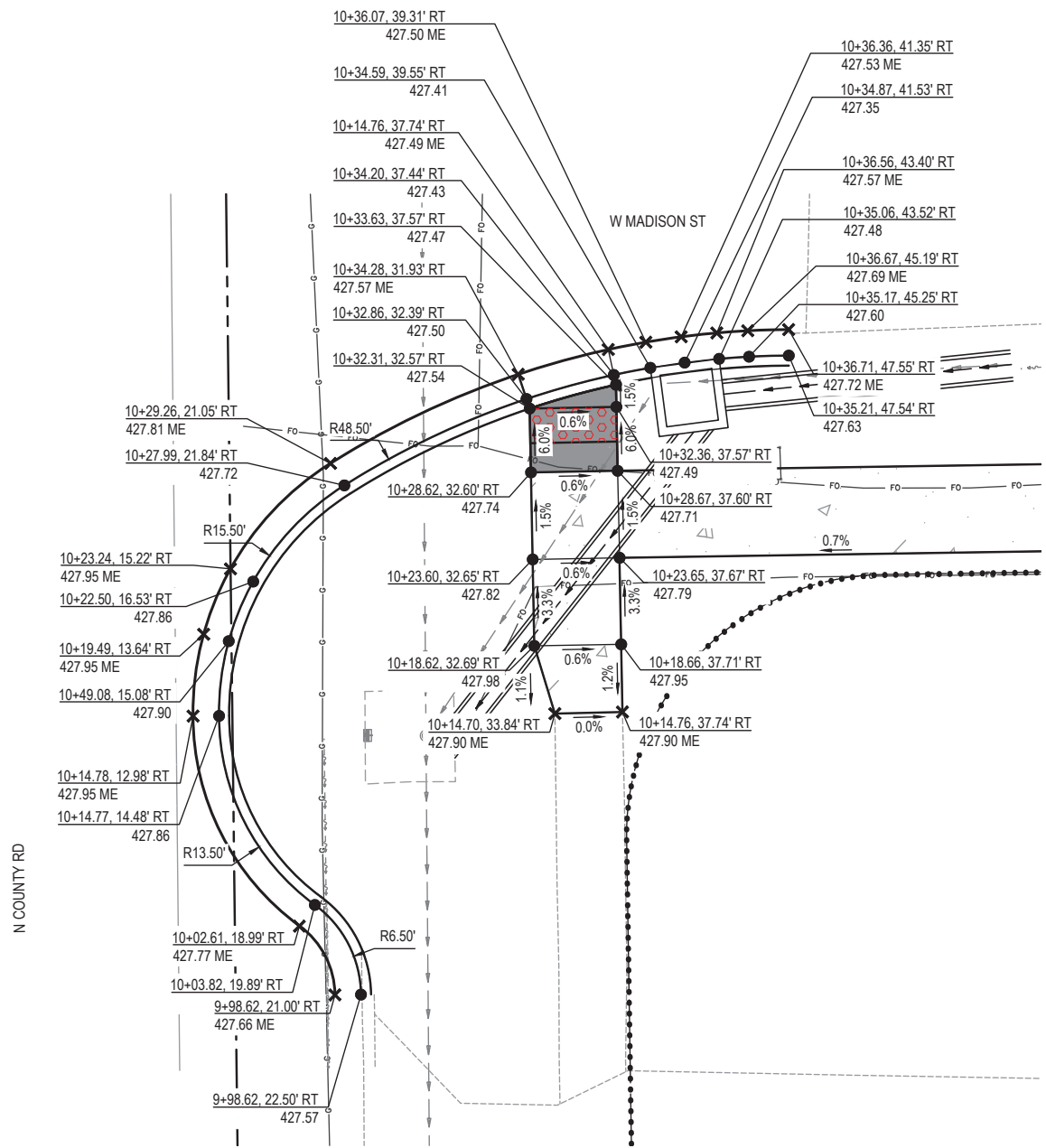
SCALE: 1" = 20' SHEET NO. 3 OF 3 SHEETS STA. _____ TO STA. _____

F.A.U. RTE.	SECTION	COUNTY	TOTAL SHEETS	SHEET NO.
9380	24-00031-00-SW	ST. CLAIR	24	13
SRTS MASCOUTAH BUMP-OUTS		CONTRACT NO. 97887		
FED. ROAD DIST. NO. -		ILLINOIS		

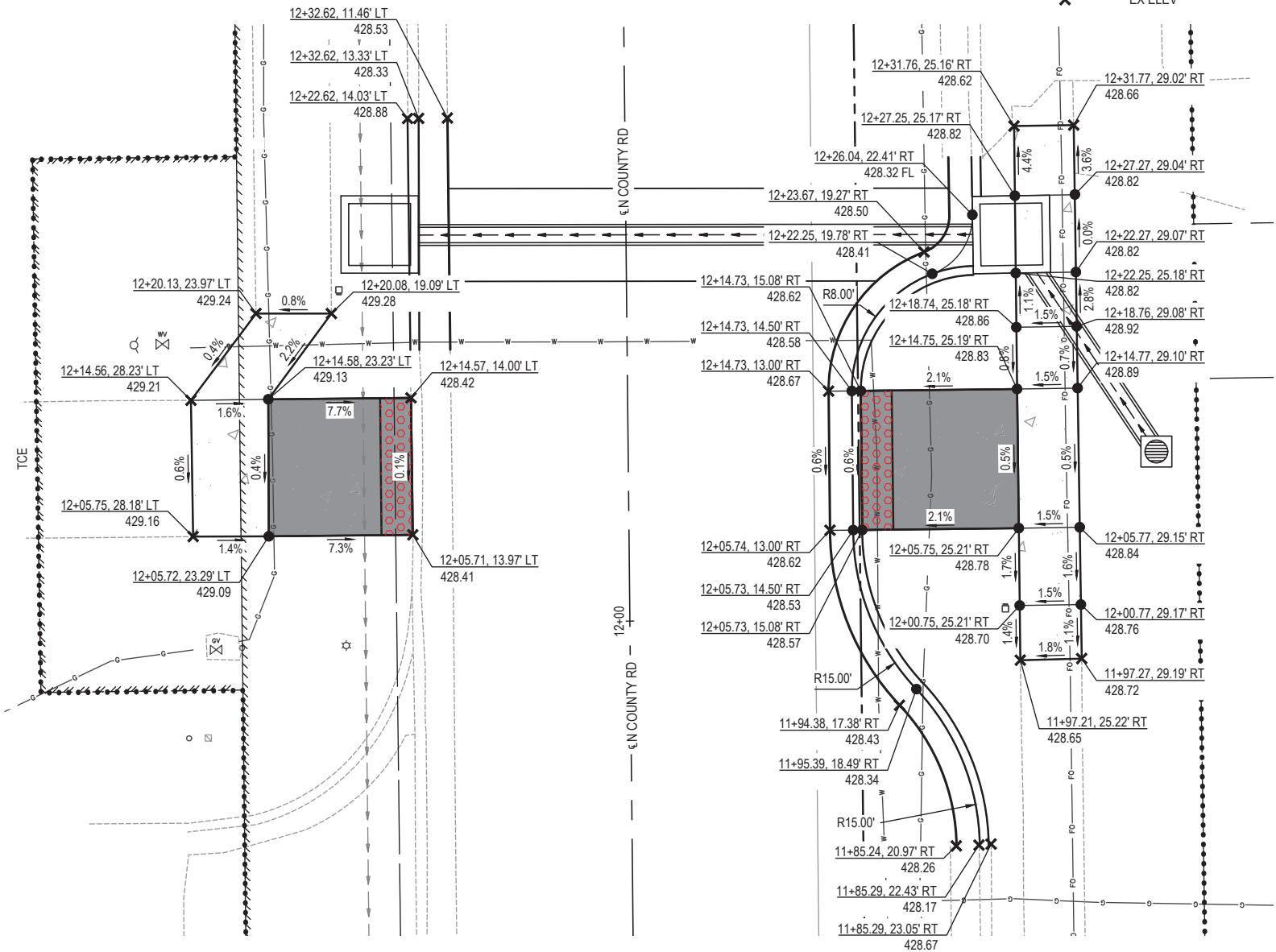
DETAIL LEGEND



- PC CONC SIDEWALK 4
- PC CONC SIDEWALK 6
- DETECTABLE WARNING
- PR ELEV
- EX ELEV



INTERSECTION DETAIL @ SE QUADRANT OF N COUNTY RD AND W MADISON ST



MID-BLOCK CROSSING DETAIL @ N COUNTY RD NEAR STA 12+05

FILE NAME = 222157.008 - SRT'S BUMP-OUT DESIGN.DWG



USER NAME =	CAMERON RAMIREZ	DESIGNED -	BRB	REVISED -	
		DRAWN -	CJR	REVISED -	
PLOT SCALE =	1" = 1'	CHECKED -	TLC	REVISED -	
PLOT DATE =	2025-12-17	DATE -	2025-12-17	REVISED -	

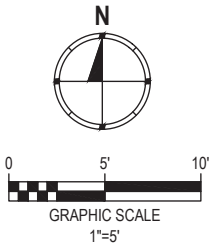
CITY OF MASCOUTAH

GRADING DETAILS

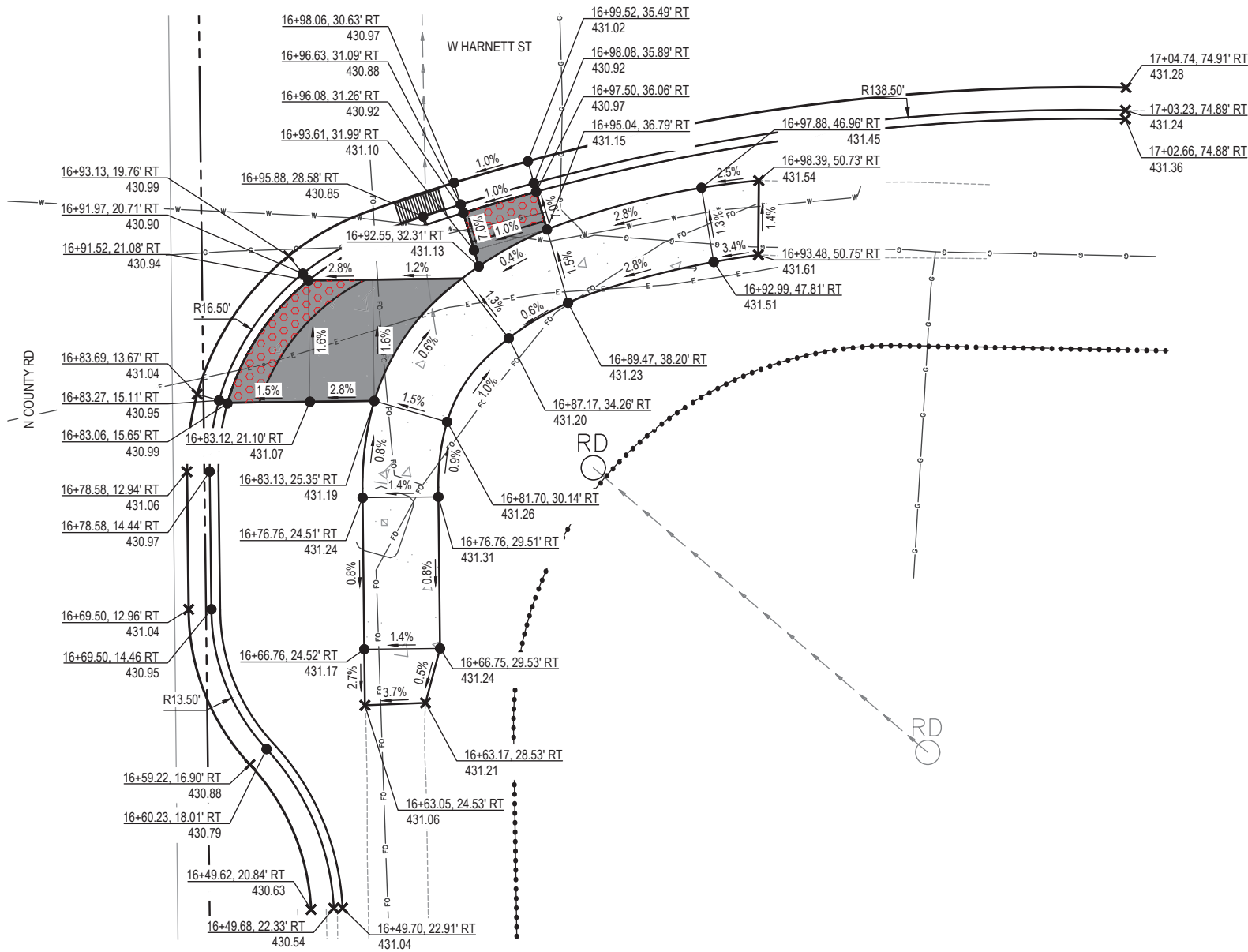
SCALE: 1" = 5' SHEET NO. 1 OF 3 SHEETS STA. _____ TO STA. _____

F.A.U. RTE.	SECTION	COUNTY	TOTAL SHEETS	SHEET NO.
9380	24-00031-00-SW	ST. CLAIR	24	14
SRTS MASCOUTAH BUMP-OUTS			CONTRACT NO. 97887	
FED. ROAD DIST. NO. -			ILLINOIS	

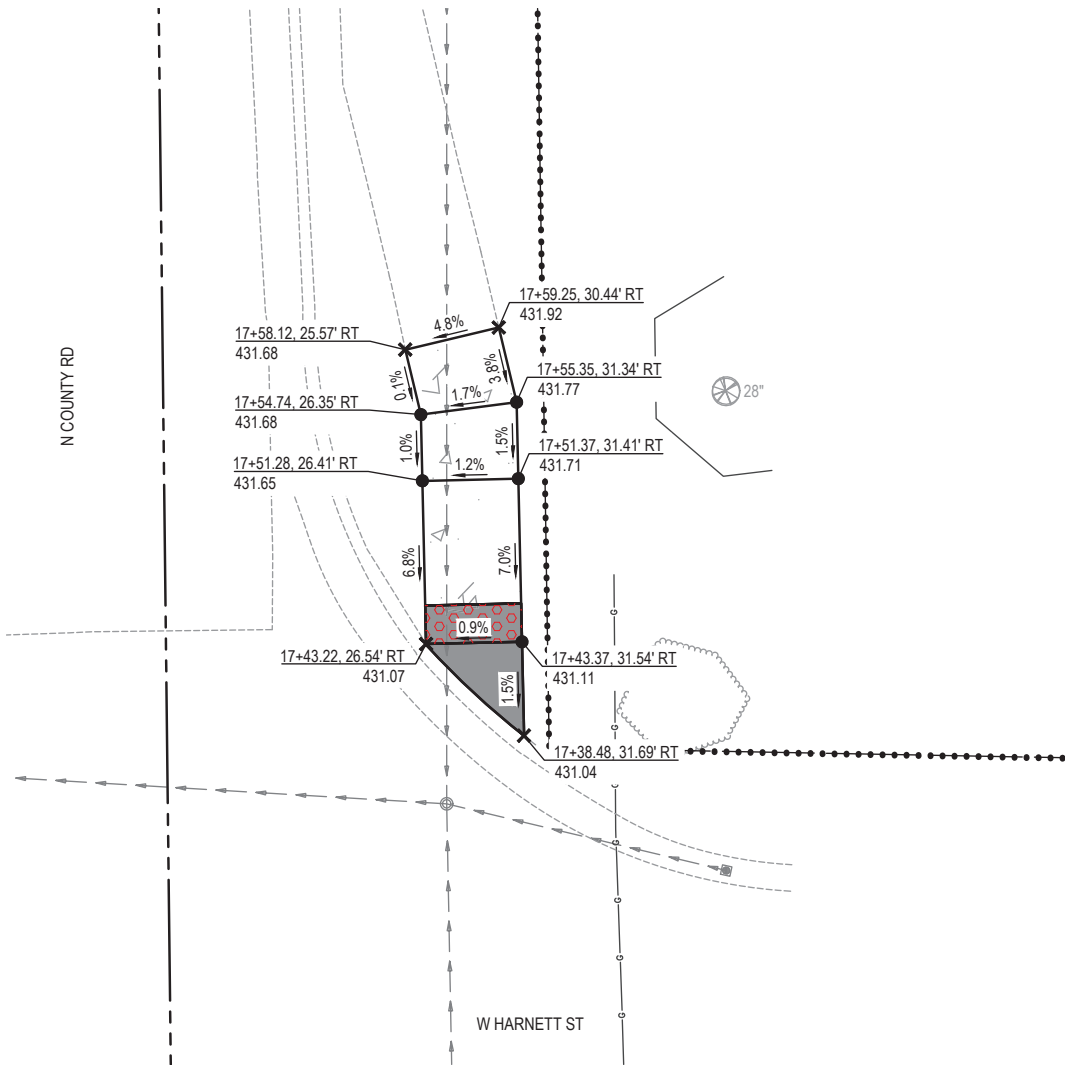
DETAIL LEGEND



- PC CONC SIDEWALK 4
- PC CONC SIDEWALK 6
- DETECTABLE WARNING
- PR ELEV
- EX ELEV



INTERSECTION DETAIL @ SE QUADRANT OF N COUNTY RD AND W HARNETT ST



INTERSECTION DETAIL @ NE QUADRANT OF N COUNTY RD AND W HARNETT ST

FILE NAME = 222157.008 - SRT'S BUMP-OUT DESIGN.DWG



USER NAME =	CAMERON RAMIREZ	DESIGNED -	BRB	REVISED -	
PLOT SCALE =	1" = 1'	DRAWN -	CJR	REVISED -	
PLOT DATE =	2025-12-17	CHECKED -	TLC	REVISED -	
		DATE -	2025-12-17	REVISED -	

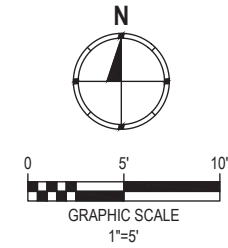
CITY OF MASCOUTAH






GRADING DETAILS

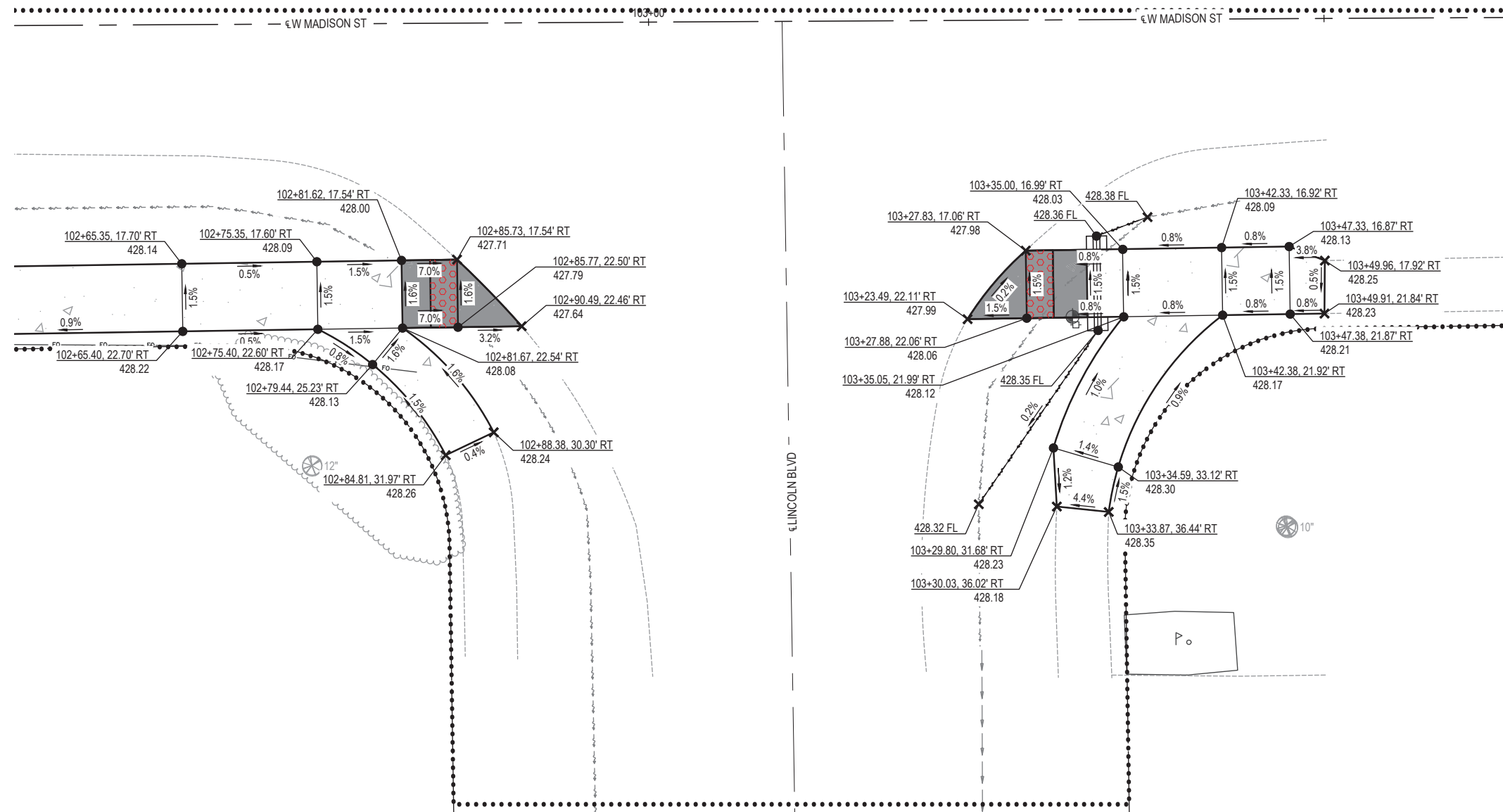
SCALE: 1" = 5' SHEET NO. 2 OF 3 SHEETS STA. TO STA.

F.A.U. RTE.	SECTION	COUNTY	TOTAL SHEETS	SHEET NO.
9380	24-00031-00-SW	ST. CLAIR	24	15
SRTS MASCOUTAH BUMP-OUTS		CONTRACT NO. 97887		
FED. ROAD DIST. NO. -		ILLINOIS		

DETAIL LEGEND



- | | |
|---|--------------------|
|  | PC CONC SIDEWALK 4 |
|  | PC CONC SIDEWALK 6 |
|  | DETECTABLE WARNING |
|  | PR ELEV |
|  | EX ELEV |



INTERSECTION DETAIL @ W MADISON ST AND LINCOLN BLVD



USER NAME = CAMERON RAMIREZ	DESIGNED - BRB	REVISED -
	DRAWN - C.JR	REVISED -
PLOT SCALE = 1' = 1'	CHECKED - TLC	REVISED -
PLOT DATE = 2025-12-17	DATE - 2025-12-17	REVISED -

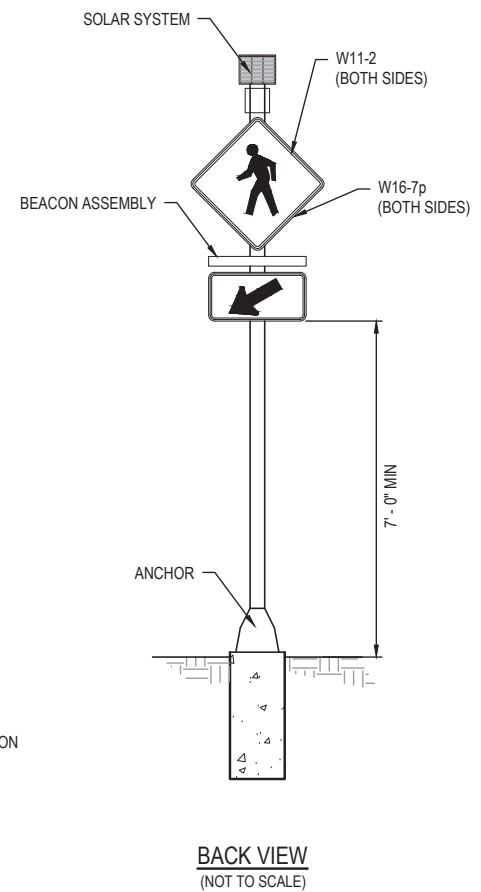
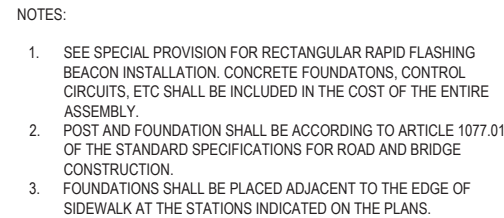
CITY OF MASCOUTAH

GRADING DETAILS

SCALE: 1" = 5'	SHEET NO. 3 OF 3 SHEETS	STA. _____ TO STA. _____
----------------	-------------------------	--------------------------

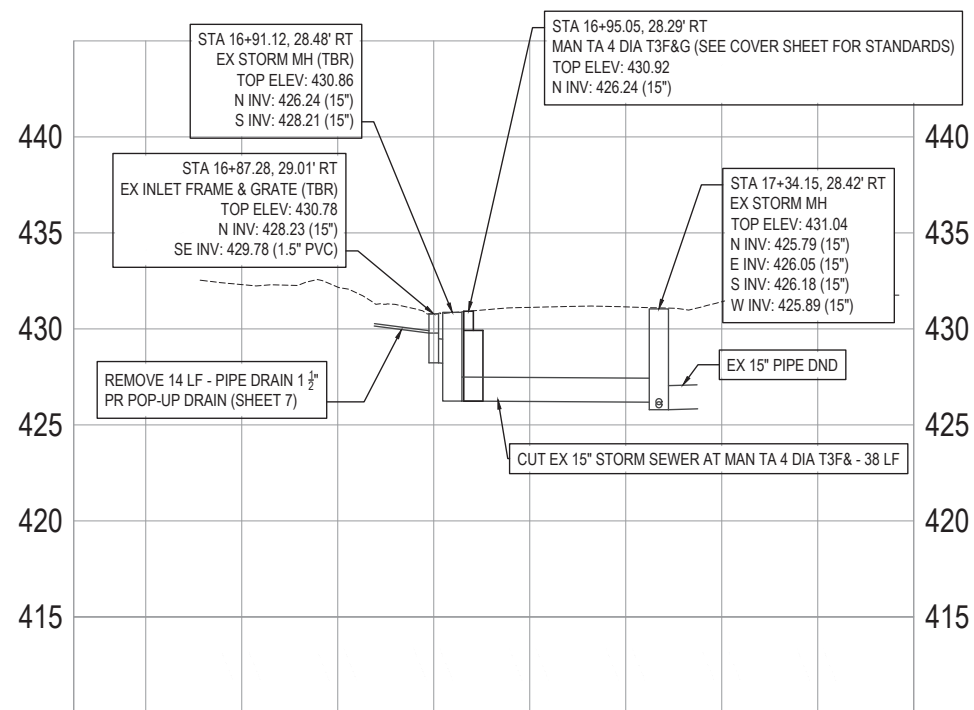
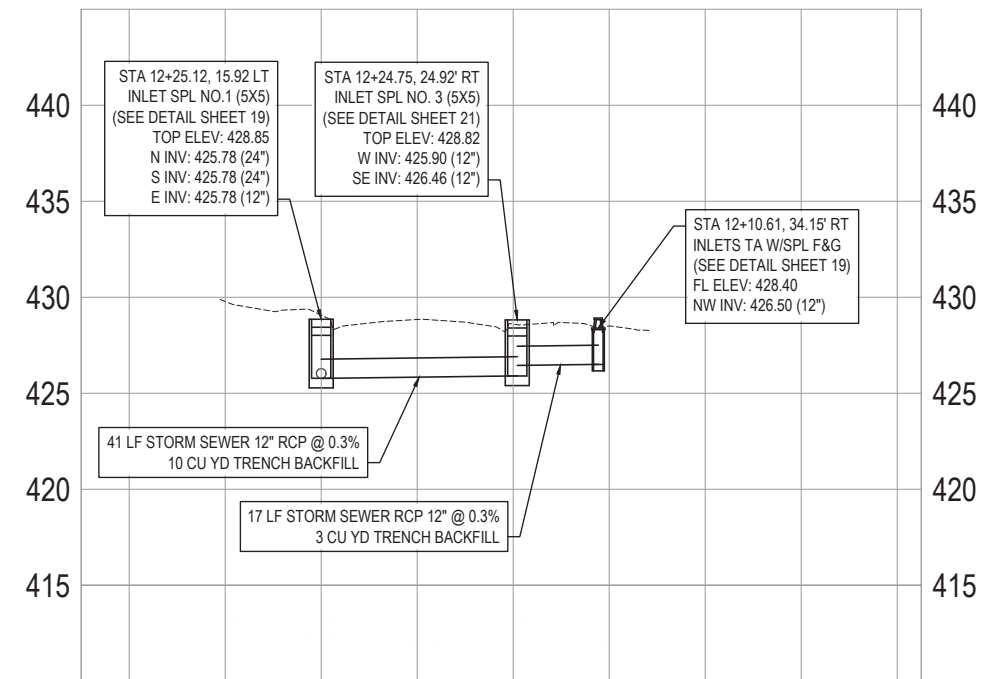
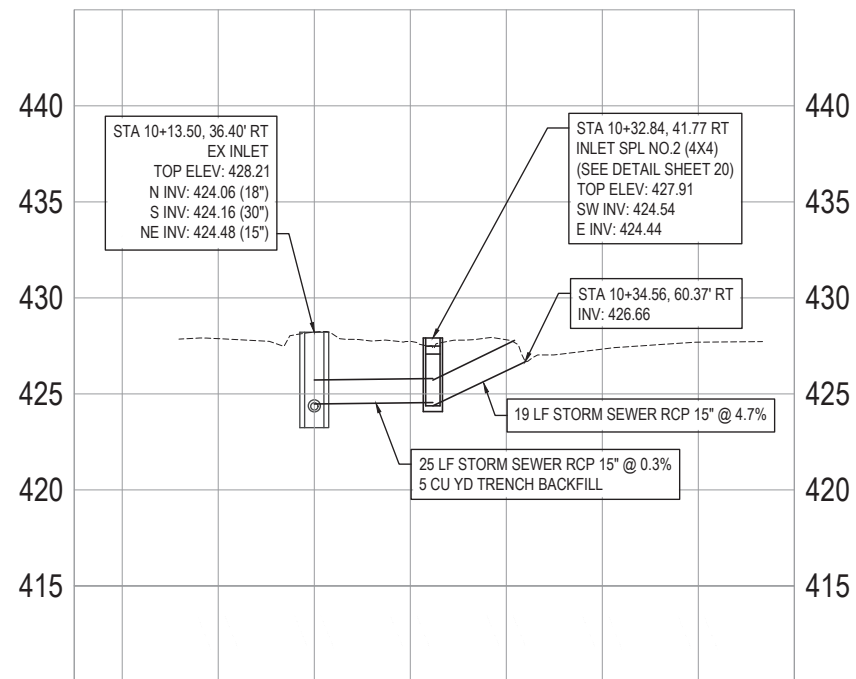
F.A.U RTE.	SECTION	COUNTY	TOTAL SHEETS	SHEET NO.
9380	24-00031-00-SW	ST. CLAIR	24	16
SRTS MASCOUTAH BUMP-OUTS				
CONTRACT NO. 97887				
FED. ROAD DIST. NO.	ILLINOIS			

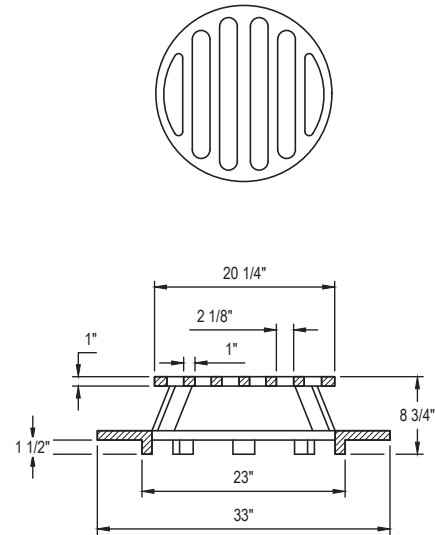
1. CONTRACTION JOINTS ARE TO BE ON $\pm 5'$ CENTERS
2. EXPANSION JOINTS ARE TO BE ON $\pm 10'$ CENTERS AND AT POINTS OF CURVATURE.
3. EXPANSION JOINT REQUIRED BETWEEN THE SIDEWALK AND EXISTING PAVEMENT OR STRUCTURES.
4. ALL EXPANSION JOINTS SHALL BE SEALED WITH GUN GRADE SEALANT.



USER NAME = CAMERON RAMIREZ	DESIGNED - BRB	REVISED -
	DRAWN - CJR	REVISED -
PLOT SCALE = 1' = 1'	CHECKED - TLC	REVISED -
PLOT DATE = 2025-12-17	DATE - 2025-12-17	REVISED -

F.A.U RTE.	SECTION	COUNTY	TOTAL SHEETS	SHEET NO.
9380	24-00031-00-SW	ST. CLAIR	24	17
SRTS MASCOUHA BUMP-OUTS		CONTRACT NO. 97887		
FED. ROAD DIST. NO. _	ILLINOIS			

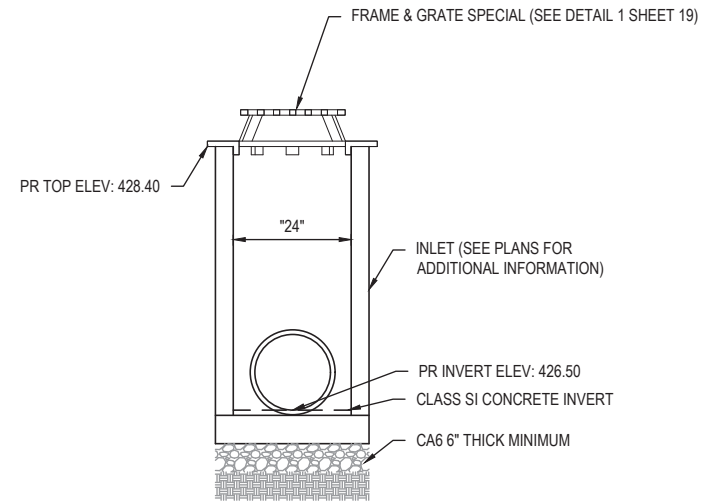




1
19

FRAME & GRATE SPECIAL

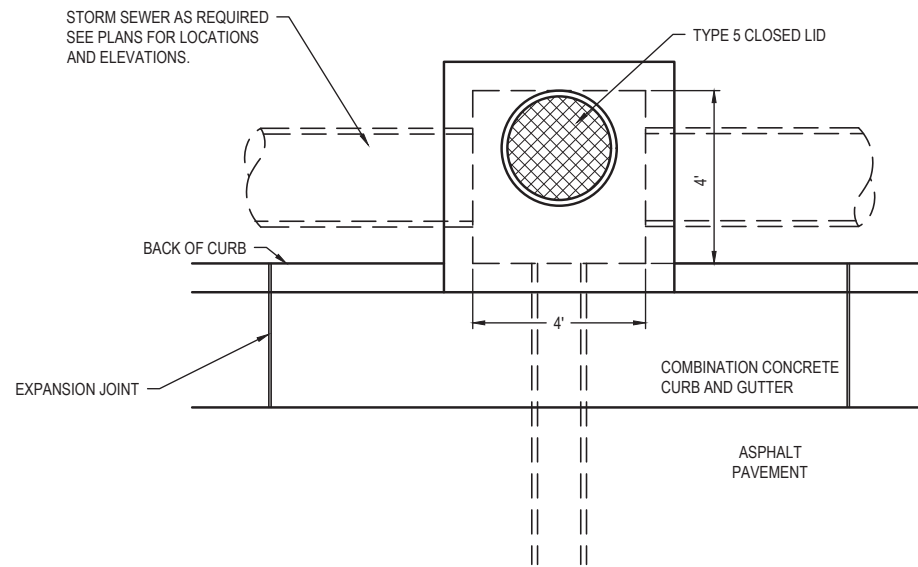
SCALE: NO SCALE



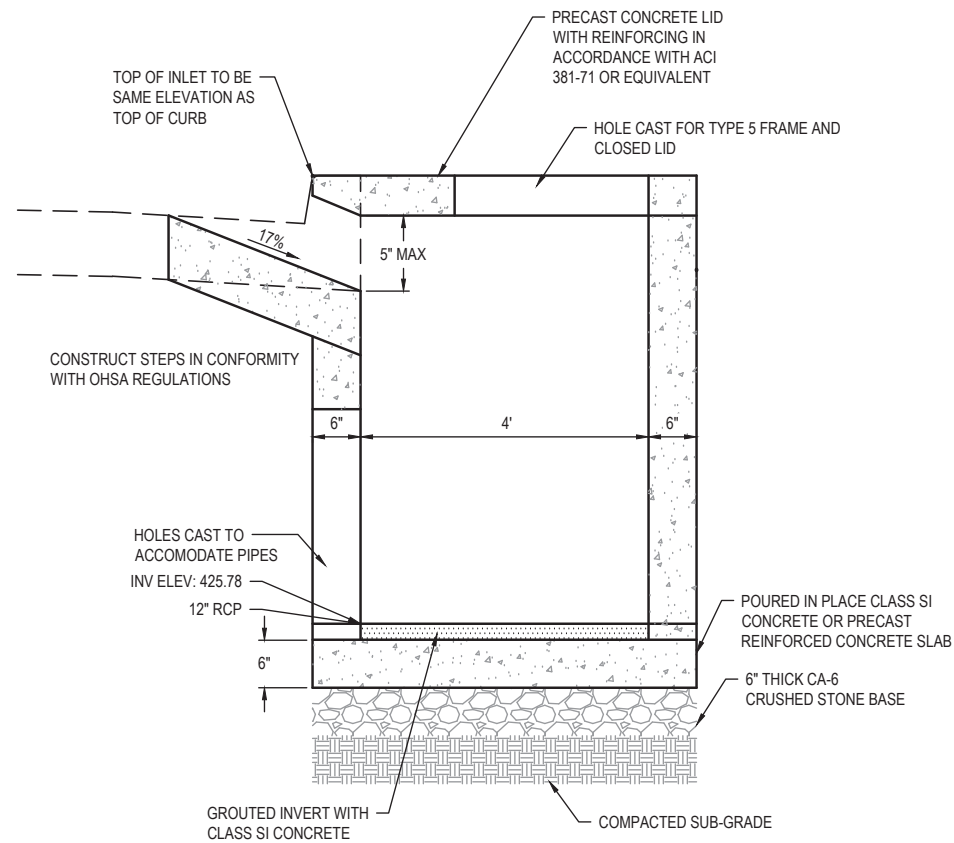
2
19

INLET TA WITH SPECIAL FRAME & GRATE (@ STA 12+10.61, 34.15 RT)

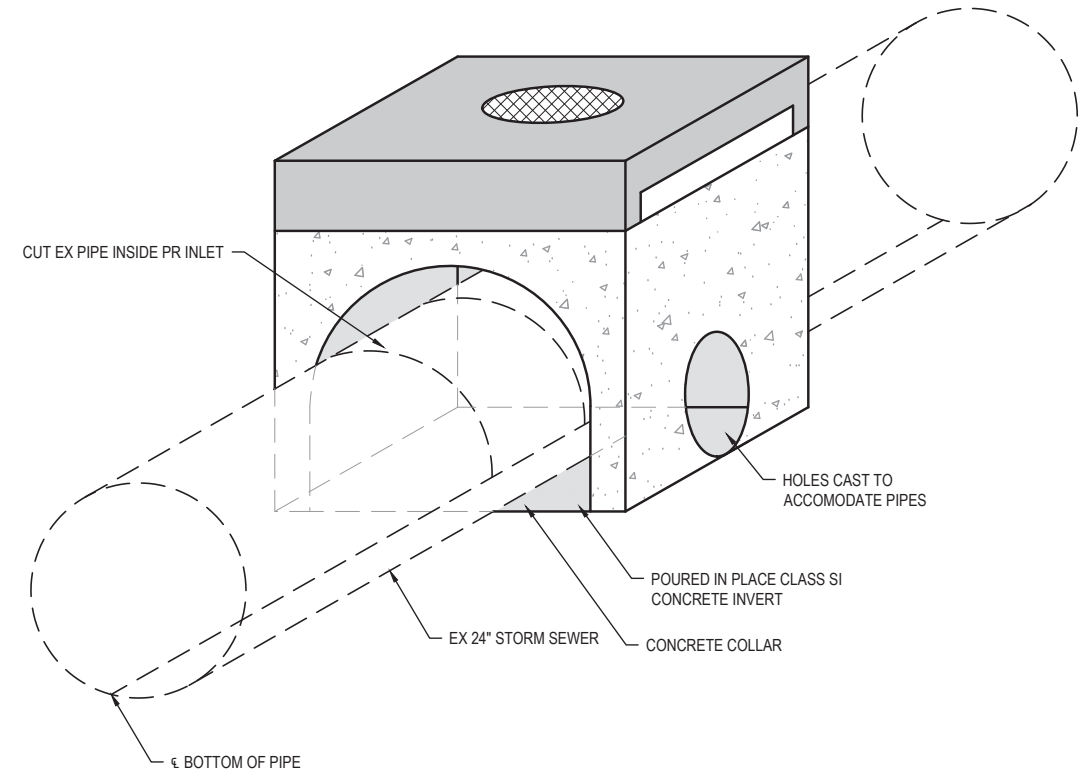
SCALE: NO SCALE



PLAN VIEW



SIDE VIEW



ISOMETRIC VIEW

3
19

INLETS, SPECIAL NO.1

SCALE: NO SCALE

FILE NAME = 222157.008 - SRTS BUMP-OUT DESIGN.DWG



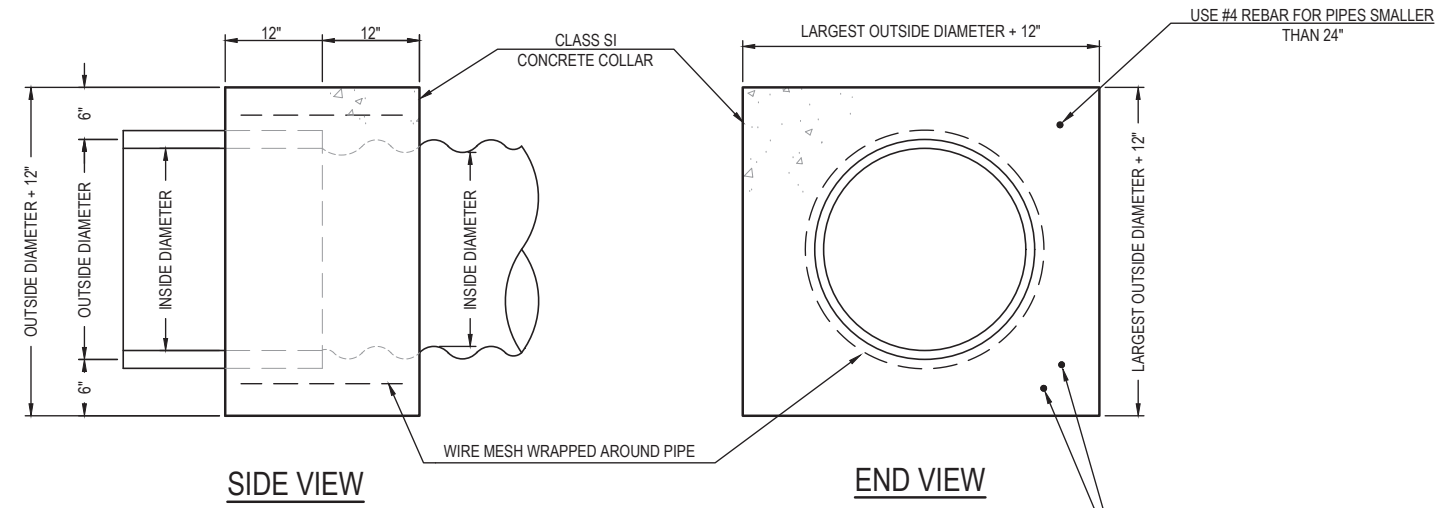
USER NAME =	CAMERON RAMIREZ	DESIGNED -	BRB	REVISED -	
PLOT SCALE =	1" = 1'	DRAWN -	CJR	REVISED -	
PLOT DATE =	2025-12-17	CHECKED -	TLC	REVISED -	
		DATE -	2025-12-17	REVISED -	

CITY OF MASCOUTAH

DRAINAGE DETAILS

SCALE: SHEET NO. 2 OF 5 SHEETS STA. TO STA.

F.A.U. RTE.	SECTION	COUNTY	TOTAL SHEETS	SHEET NO.
9380	24-00031-00-SW	ST. CLAIR	24	19
SRTS MASCOUTAH BUMP-OUTS			CONTRACT NO. 97887	
FED. ROAD DIST. NO. -			ILLINOIS	



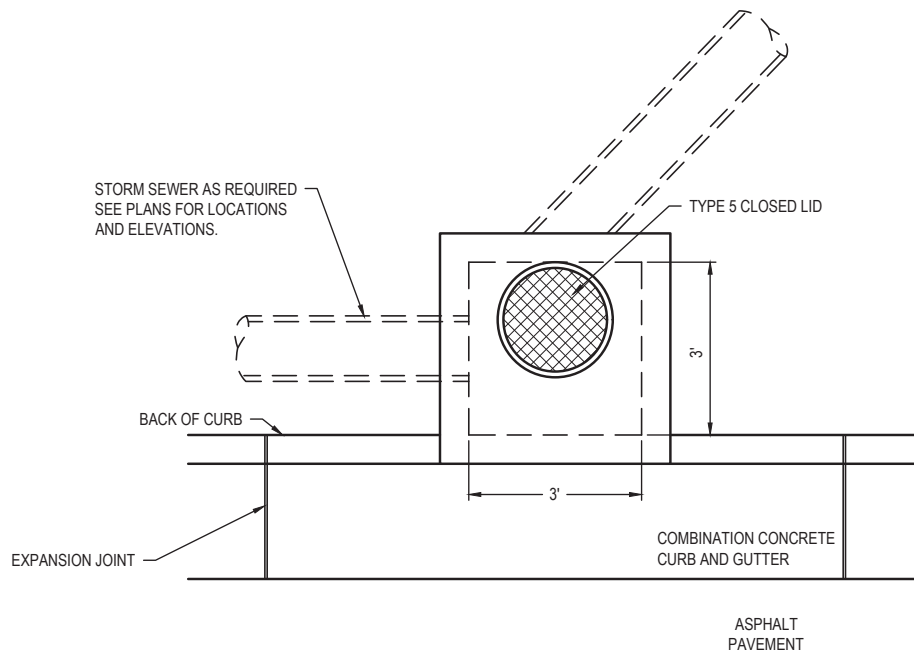
INSIDE DIAMETER OF PIPE	ESTIMATED CLASS SI CONCRETE REQUIRED
INCH	CU. YD.
12"	0.30
15"	0.40
18"	0.45
24"	0.60
30"	0.80
36"	0.95
42"	1.25
48"	1.45
54"	1.70
60"	1.95
72"	2.50
84"	3.10
96"	3.80
108"	4.55

- GENERAL NOTES
1. CLASS SI CONCRETE SHALL BE USED THROUGHOUT.
 2. WHEN CONCRETE COLLARS ARE USED TO CONNECT PIPES OF DIFFERENT OUTSIDE DIAMETERS, THE CONCRETE COLLAR SHALL BE FORMED USING THE LARGEST OUTSIDE DIAMETER (SEE END VIEW).
 3. THE WIRE MESH SHALL WEIGH NOT LESS THAN 54#/100 SQ. FT. (2.63 kg/m).
 4. WHEN CONCRETE COLLARS ARE CONSTRUCTED ADJACENT TO AN EXISTING CONCRETE STRUCTURE (HEADWALLS, ETC.) REBAR, SHALL BE USED AND WILL NOT BE PAID FOR SEPARATELY BUT INCLUDED IN THE PRICE OF THE CONCRETE COLLAR.

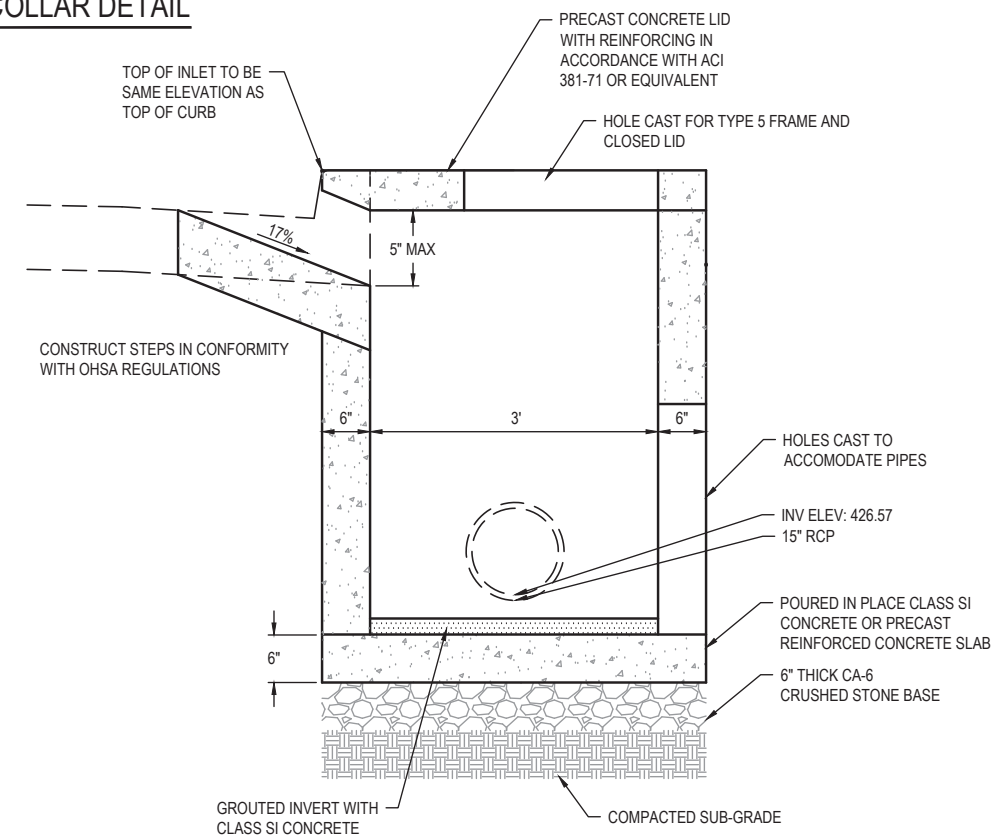
1
20

CONCRETE COLLAR DETAIL

SCALE: NO SCALE



PLAN VIEW



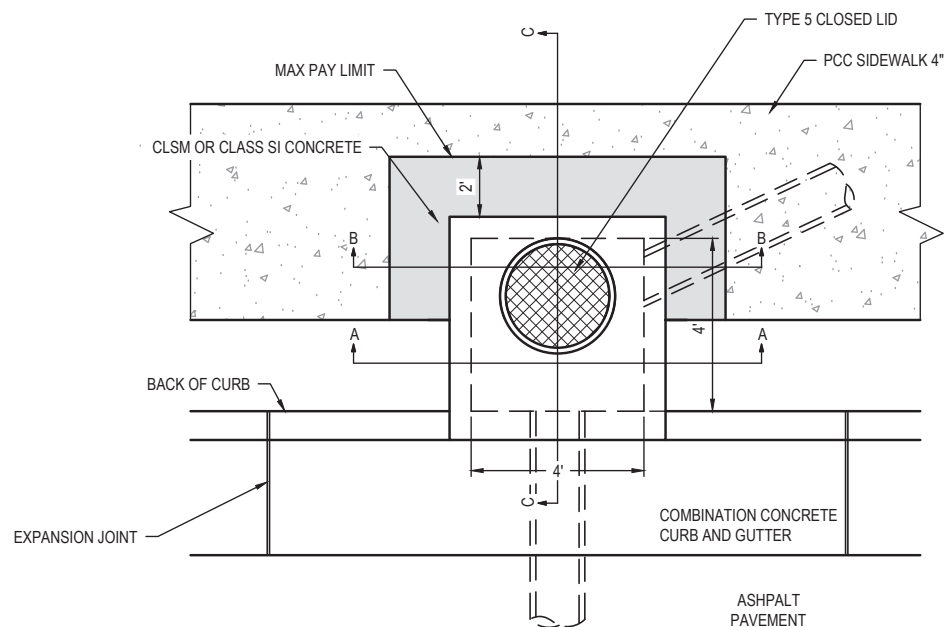
SIDE VIEW

2
20

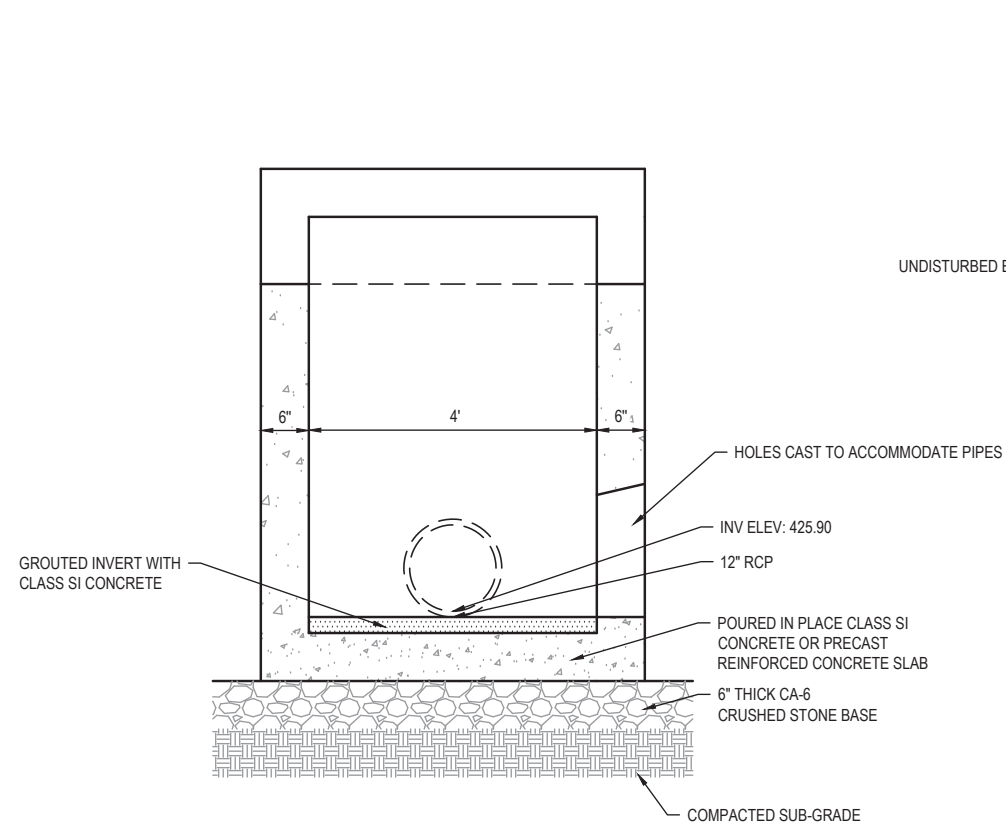
INLETS, SPECIAL NO. 2

SCALE: NO SCALE

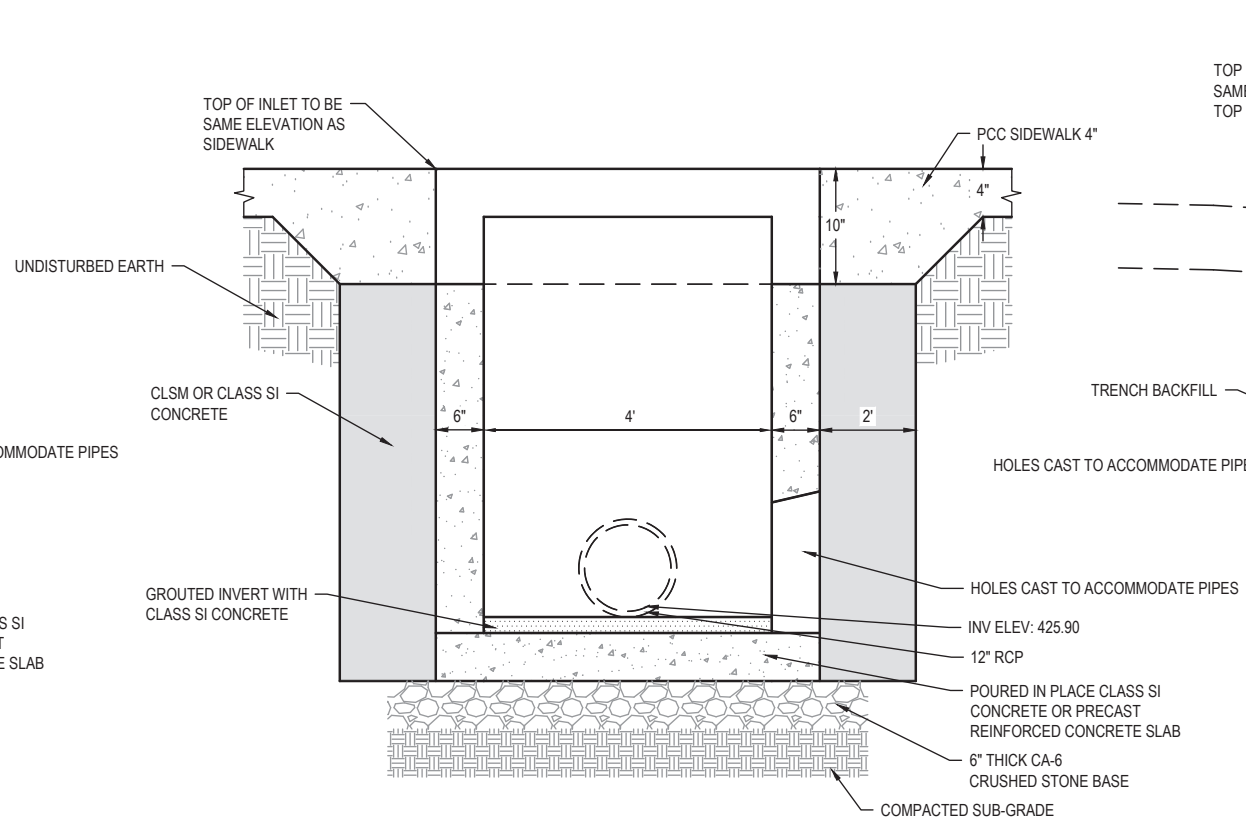
FILE NAME = 222157.008 - SRT'S BUMP-OUT DESIGN.DWG



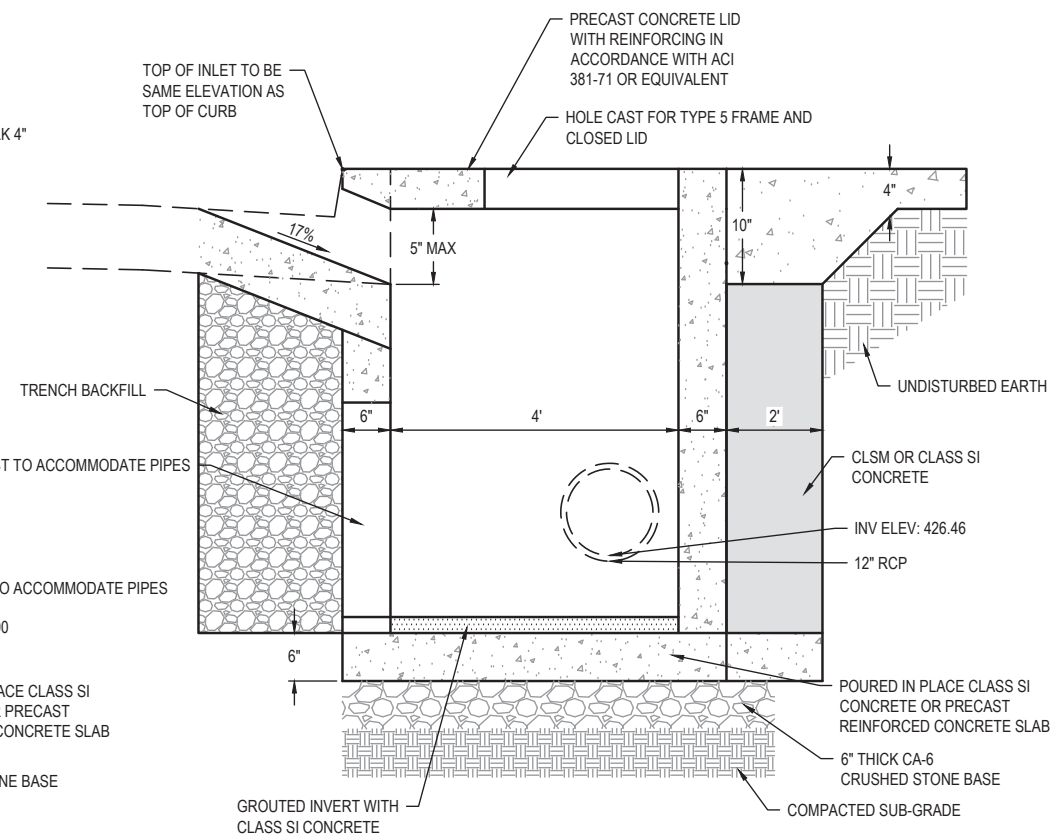
PLAN VIEW



SECTION A - A



SECTION B - B

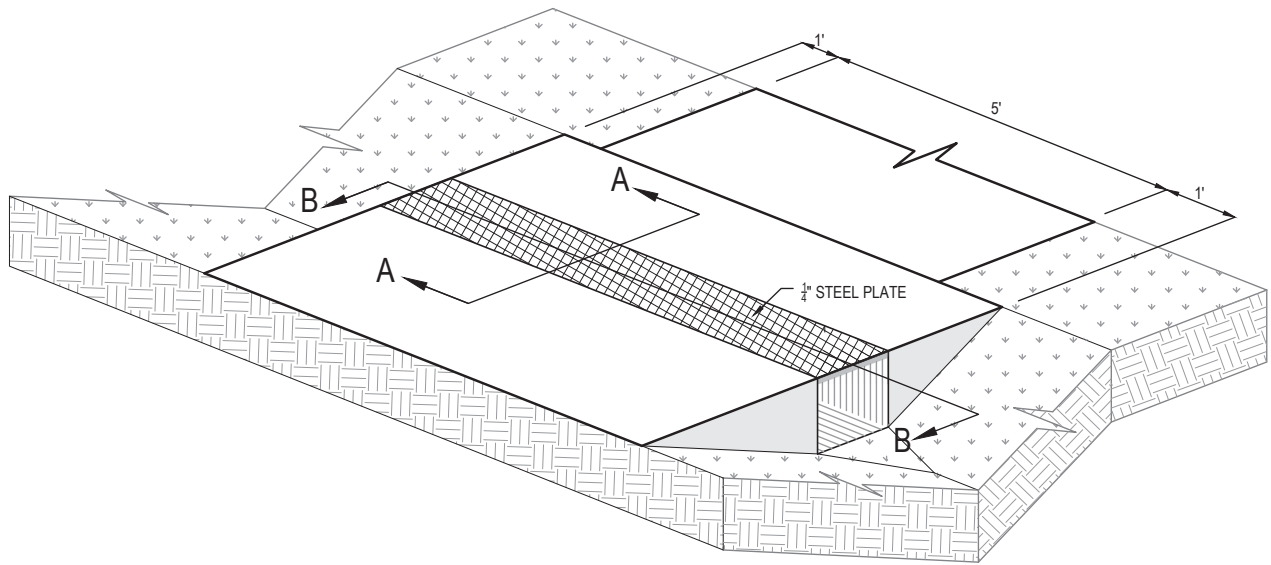


SECTION C - C

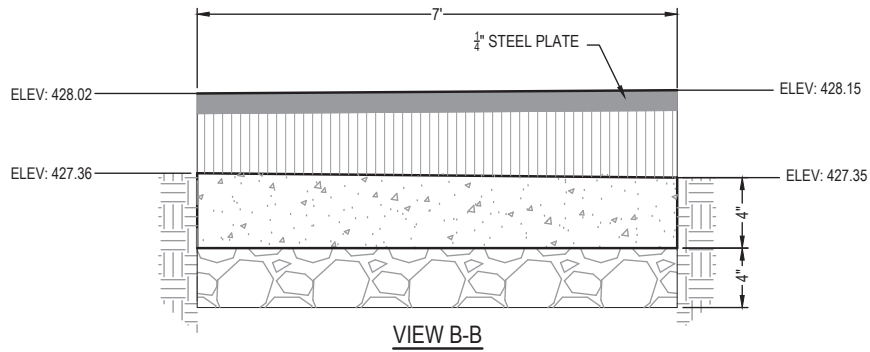
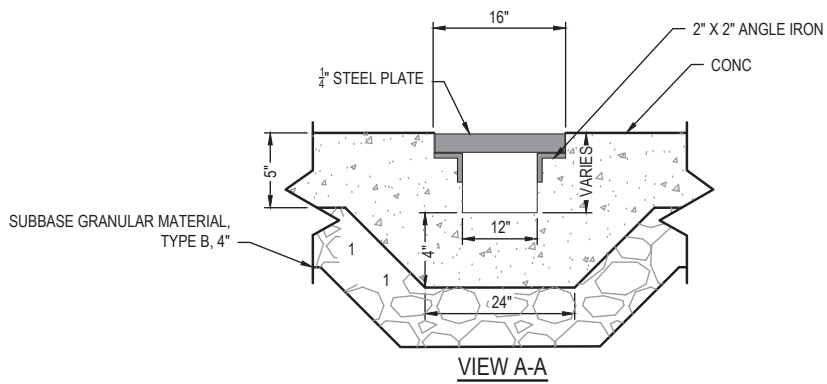
1
21 INLETS, SPECIAL NO. 3 (STA 12+25, RT)
SCALE: NO SCALE

FILE NAME = 222157.008 - SRTS BUMP-OUT DESIGN.DWG

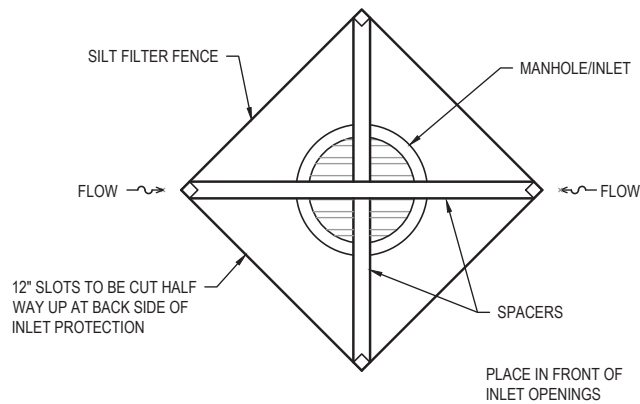
FILE NAME = 222157_008 - SRT'S BUMPOUT DESIGN.DWG



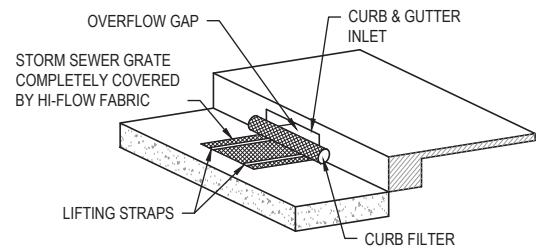
1
22 TRENCH DRAIN DETAIL
SCALE: NO SCALE



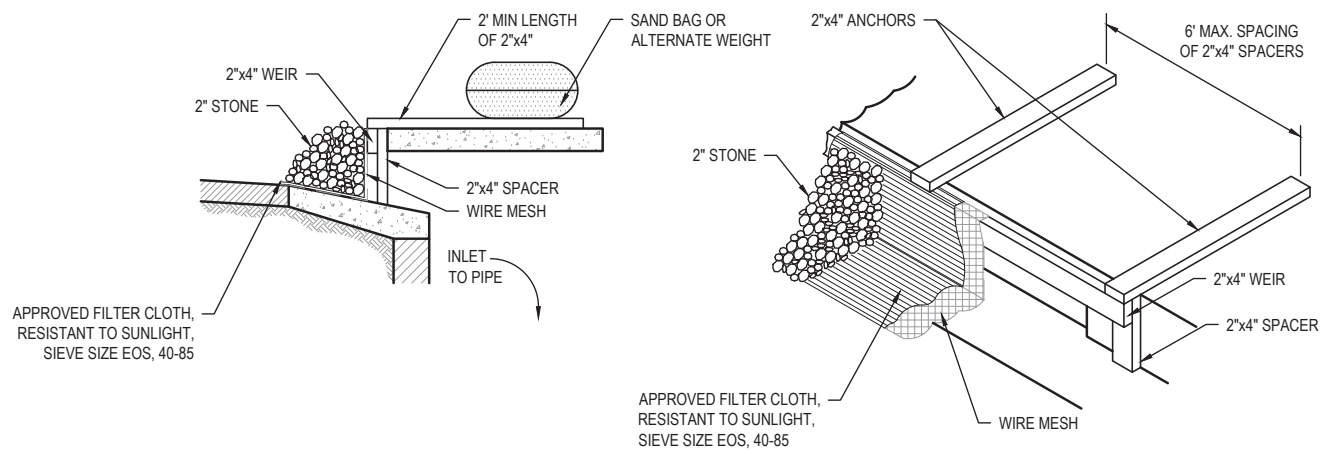
FILE NAME = 222157.008 - SRTS BUMP-OUT DESIGN.DWG



1
24
INLET PROTECTION
SCALE: NO SCALE



2
24
CURB INLET PROTECTION
SCALE: NO SCALE



3
24
INLET PROTECTION DETAIL FOR OPEN THROAT
SCALE: NO SCALE