

02-28-14 LETTING ITEM 114

STATE OF ILLINOIS
DEPARTMENT OF TRANSPORTATION
DIVISION OF HIGHWAYS

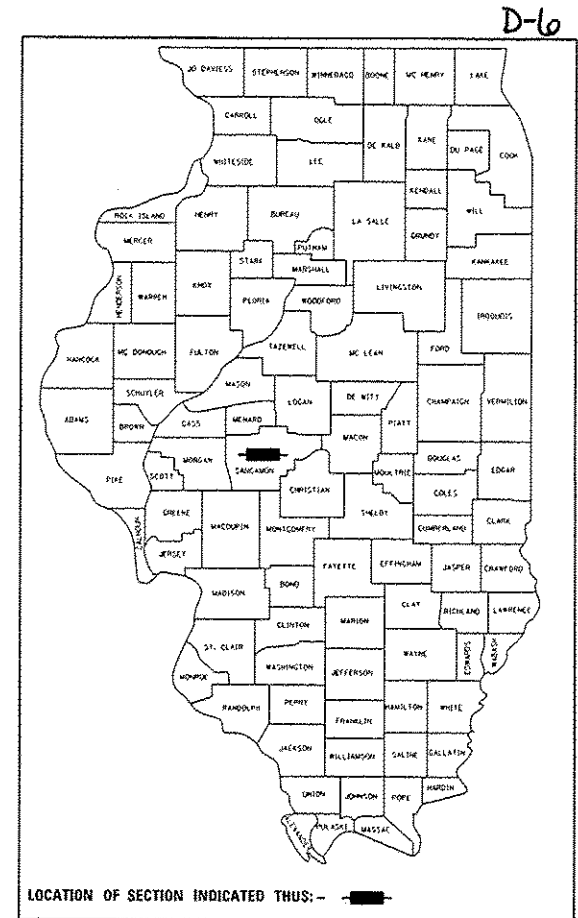
F.A. RTE.	SECTION	COUNTY	TOTAL SHEETS	SHEET NO.
		SANGAMON	16	1
ILLINOIS			CONTRACT NO. 46315	

INDEX OF SHEETS

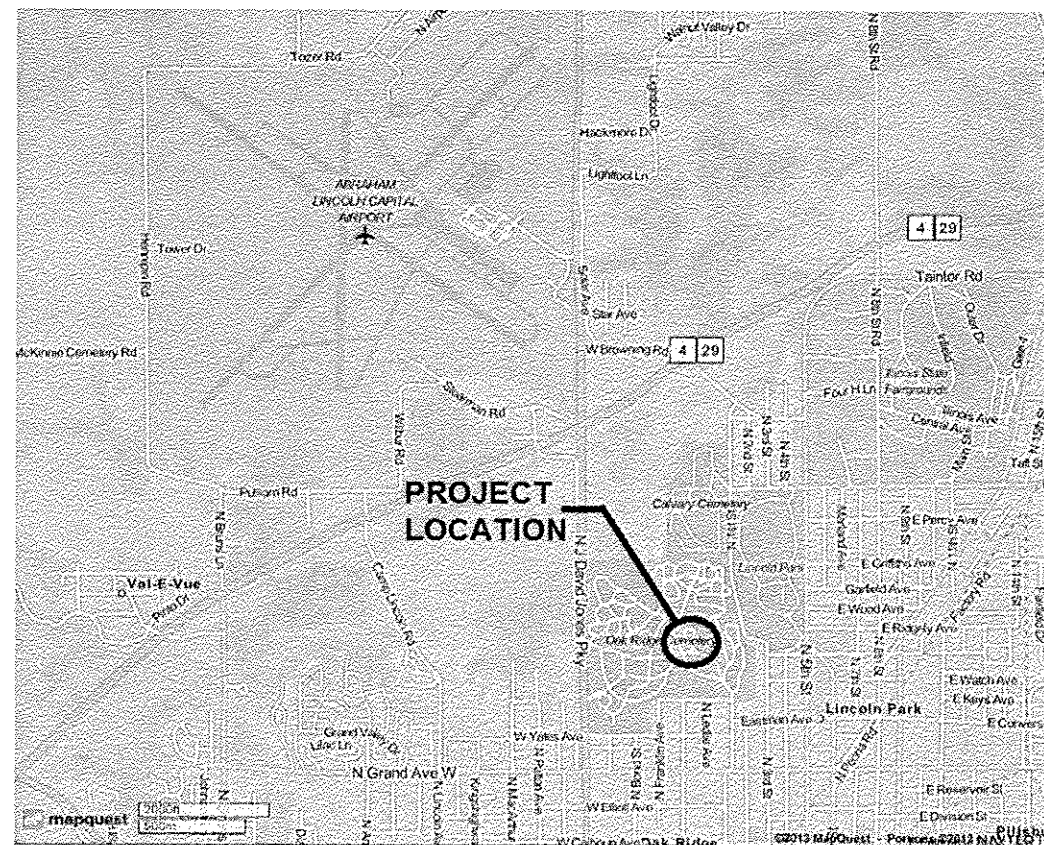
SHEET NO.	SHEET TITLE
1	COVER SHEET
2-4	SUMMARY OF QUANTITIES
5-6	SCHEDULE OF QUANTITIES
7	GENERAL NOTES, STANDARDS, AND TYPICAL SECTIONS
8	EXISTING PLAN SHEET
9	PROPOSED DRAINAGE PLAN SHEET
10	PROPOSED PAVEMENT PLAN SHEET
11	PROPOSED PLAN SHEET STATION 200+00 - 201+00
12	ELEVATIONS AND BENCHMARK PLAN SHEET
13-14	DETAILS
15-16	CROSS SECTIONS

PROPOSED
HIGHWAY PLANS

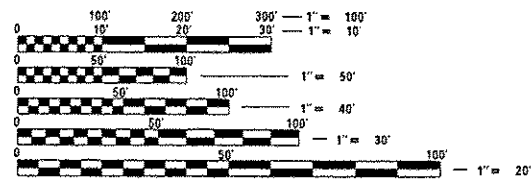
IDOT
PARK ROADS
LINCOLN S TOMB SITE RENOVATIONS
SANGAMON COUNTY
C-30-032-14



LOCATION OF SECTION INDICATED THUS: - [black rectangle] -



SPRINGFIELD, IL
TOWNSHIP 16N
RANGE 5W



FULL SIZE PLANS HAVE BEEN PREPARED USING STANDARD ENGINEERING SCALES. REDUCED SIZED PLANS WILL NOT CONFORM TO STANDARD SCALES. IN MAKING MEASUREMENTS ON REDUCED PLANS, THE ABOVE SCALES MAY BE USED.

J.U.L.I.E.
JOINT UTILITY LOCATION INFORMATION FOR EXCAVATION
1-800-892-0123
OR 811

PROJECT ENGINEER: LANCE KIDD
PROJECT MANAGER: LANCE KIDD

CONTRACT NO. 46315

STATE OF ILLINOIS
DEPARTMENT OF TRANSPORTATION
DIVISION OF HIGHWAYS

SUBMITTED Jan 13 2014
[Signature]
DEPUTY DIRECTOR OF HIGHWAYS, REGION ENGINEER

Jan 24 2014
[Signature]
ENGINEER OF DESIGN AND ENVIRONMENT

Jan 24 2014
[Signature]
DIRECTOR OF HIGHWAYS CHIEF ENGINEER



PRINTED BY THE AUTHORITY
OF THE STATE OF ILLINOIS

CODE NO.	ITEM	UNIT	URBAN	
			TOTAL QUANTITY	CONSTRUCTION CODE
100% STATE				
0005				
20100110	TREE REMOVAL (6 TO 15 UNITS DIAMETER)	UNIT	20	20
20800150	TRENCH BACKFILL	CU YD	22.7	22.7
•21101600	TOPSOIL FURNISH AND PLACE, VARIABLE DEPTH	SO YD	507	507
•21400100	GRADING AND SHAPING DITCHES	FOOT	306	306
25000100	SEEDING, CLASS 1	ACRE	0.2	0.2
25000400	NITROGEN FERTILIZER NUTRIENT	POUND	18	18
25000500	PHOSPHORUS FERTILIZER NUTRIENT	POUND	18	18
25000600	POTASSIUM FERTILIZER NUTRIENT	POUND	18	18
25000700	AGRICULTURAL GROUND LIMESTONE	TON	0.4	0.4
25100125	MULCH, METHOD 3	ACRE	0.1	0.1
•25100900	TURF REINFORCEMENT MAT	SO YD	183	183
28000400	PERIMETER EROSION BARRIER	FOOT	280	280
28000500	INLET AND PIPE PROTECTION	EACH	4	4
28100105	STONE RIPRAP, CLASS A3	SO YD	14.3	14.3
28200200	FILTER FABRIC	SO YD	14.3	14.3

CODE NO.	ITEM	UNIT	URBAN	
			TOTAL QUANTITY	CONSTRUCTION CODE
100% STATE				
0005				
31101200	SUB-BASE GRANULAR MATERIAL, TYPE B 4"	SO YD	93.3	93.3
35101400	AGGREGATE BASE COURSE, TYPE B	TON	42.3	42.3
40600100	BITUMINOUS MATERIALS (PRIME COAT)	GALLON	282	282
40600300	AGGREGATE (PRIME COAT)	TON	1.5	1.5
40600635	LEVELING BINDER (MACHINE METHOD), N70	TON	213.3	213.3
40600982	HOT-MIX ASPHALT SURFACE REMOVAL - BUTT JOINT	SO YD	156.2	156.2
40603315	HOT-MIX ASPHALT SURFACE COURSE, MIX "C", N70	TON	63.4	63.4
42000100	PORTLAND CEMENT CONCRETE PAVEMENT 6"	SO YD	93.3	93.3
42001300	PROTECTIVE COAT	SO YD	253	253
42400200	PORTLAND CEMENT CONCRETE SIDEWALK 5 INCH	SO FT	1162	1162
44000100	PAVEMENT REMOVAL	SO YD	326	326
44000300	CURB REMOVAL	FOOT	56	56
44000400	CUTTER REMOVAL	FOOT	170	170
X4404700	SIDEWALK REMOVAL (SPECIAL)	SO FT	571	571
44201741	CLASS D PATCHES, TYPE II, 8 INCH	SO YD	21.3	21.3

FILE NAME - D64E315-sh1802-500.dgn	USER NAME - Stevak	DESIGNED - R.H.D.	REVISED -
		DRAWN - S.D.K.	REVISED -
	PLOT SCALE = 1:8000 1/4" = 1'	CHECKED - R.H.D.	REVISED -
Default	PLOT DATE = 12/19/2013	DATE - 12/19/13	REVISED -

**STATE OF ILLINOIS
DEPARTMENT OF TRANSPORTATION**

**SUMMARY OF QUANTITIES
LINCOLN'S TOMB SITE RENOVATIONS**

SCALE:	SHEET 2 OF 16 SHEETS	STA.	TO STA.	F.A. RTE.	SECTION	COUNTY	TOTAL SHEETS	SHEET NO.
					PARK ROADS	SANGAMON	16	2
							CONTRACT NO. 46315	
ILLINOIS FED. AID PROJECT								

JOB NO. 250-081-K3 VASCONCELLES ENGINEERING CORP. DESIGN FIRM REGISTRATION NUMBER 184-002107

SUMMARY OF QUANTITIES				CONSTRUCTION CODE
CODE NO.	ITEM	UNIT	TOTAL QUANTITY	100% STATE
				0005
48300100	PORTLAND CEMENT CONCRETE SHOULDERS 6"	50 YD	52.8	52.8
50901760	PIPE HANDRAIL	FOOT	7	7
542A0217	PIPE CULVERTS, CLASS A, TYPE 1 12"	FOOT	40	40
54213657	PRECAST REINFORCED CONCRETE FLARED END SECTION 12"	EACH	1	1
54213660	PRECAST REINFORCED CONCRETE FLARED END SECTION 15"	EACH	1	1
54214920	PRECAST REINFORCED CONC FLARED END SECTIONS - ARCH, EQUIVALENT ROUND-SIZE 15"	EACH	1	1
54215415	CAST-IN-PLACE REINFORCED CONCRETE FLARED END SECTIONS 15"	EACH	1	1
54247090	GRATING FOR CONCRETE FLARED END SECTION 12"	EACH	1	1
54247100	GRATING FOR CONCRETE FLARED END SECTION 15"	EACH	1	1
54248100	GRATING FOR CONCRETE FLARED END SECTION EQUIVALENT ROUND-SIZE 15"	EACH	1	1
550A0050	STORM SEWERS, CLASS A, TYPE 1 12"	FOOT	16	16
550A0070	STORM SEWERS, CLASS A, TYPE 1 15"	FOOT	56	56
55100300	STORM SEWER REMOVAL 6"	FOOT	10	10
55100400	STORM SEWER REMOVAL 10"	FOOT	54	54
55100500	STORM SEWER REMOVAL 12"	FOOT	45	45

SUMMARY OF QUANTITIES				CONSTRUCTION CODE
CODE NO.	ITEM	UNIT	TOTAL QUANTITY	100% STATE
				0005
55100700	STORM SEWER REMOVAL 15"	FOOT	24	24
60238800	INLET, TYPE A	EACH	1	1
60500060	REMOVING INLETS	EACH	3	3
60602800	CONCRETE GUTTER, TYPE B	FOOT	64	64
60801012	FLAP GATE 12"	EACH	2	2
*61139300	STORM SEWERS (SPECIAL), 6"	FOOT	53	53
*61140000	STORM SEWER (SPECIAL), 8"	FOOT	52	52
67100100	MOBILIZATION	L SUM	1	1
72000100	SIGN PANEL - TYPE 1	50 FT	6	6
72900100	METAL POST - TYPE A	FOOT	30	30
*78000100	PAINT PAVEMENT MARKING - LETTERS AND SYMBOLS	50 FT	59.8	59.8
*78000400	PAINT PAVEMENT MARKING - LINE 6"	FOOT	666	666
78300100	PAVEMENT MARKING REMOVAL	50 FT	300.8	300.8
*X0301430	PRECAST CONCRETE PARKING BLOCK	EACH	2	2
*X0325323	MANHOLES, TYPE A, SANITARY, 4'-DIAMETER, TYPE 1 FRAME, CLOSED LID	EACH	1	1

* SPECIALTY ITEM

FILE NAME : 0640315-ah1803-500.dgn	USER NAME : STEWAK	DESIGNED - R.H.D.	REVISED -	STATE OF ILLINOIS DEPARTMENT OF TRANSPORTATION	SUMMARY OF QUANTITIES LINCOLN'S TOMB SITE RENOVATIONS		F.A. RTE.	SECTION	COUNTY	TOTAL SHEETS	SHEET NO.	
Default	PLOT SCALE : 1:8000 1/2 in.	DRAWN - S.D.K.	REVISED -		SCALE:	SHEET 3 OF 16 SHEETS	STA.	TO STA.	PARK ROADS	SANGAMON	16	3
	PLOT DATE : 12/19/2013	CHECKED - R.H.D.	REVISED -		CONTRACT NO. 46315							
		DATE - 12/19/13	REVISED -		ILLINOIS FED. AID PROJECT							

JOB NO. 250-081-13 WASCONEELLES ENGINEERING CORP. DESIGN FIRM REGISTRATION NUMBER 184-002107

DRAINAGE REMOVAL SCHEDULE				
STATION(S)	STORM SEWER REMOV LIN. FT.	SIZE IN. DIA.	PLUG EXIST STORM SEWER CU. YD.	REMOVE INLETS EACH
SPRINGFIELD AVENUE				
RT 51+25			0.3	10
RT 51+25 - 51+67	54	10		
RT 51+67				1
RT 52+15	10	8		1
RT 52+15 - 52+52	37	12		
RT 52+37 - 52+52	24	15		
RT 52+52				1
GRANT DRIVE				
LT 60+47 - 60+54	8	12		
TOTAL =	133		0.3	3

REMOVAL SCHEDULE										
LOCATION	STATION	TO STATION	PAVT. REMOVAL AREA SQ. YD.	PATCHING CL D T II, 8 INCH SQ. YD.	HMA SURF REM BUTT JT SQ. YD.	PAVT. MARKING REMOVAL SQ. FT.	SIDEWALK SPECIAL REMOVAL SQ. FT.	CURB REMOVAL FOOT	GUTTER REMOVAL FOOT	TREE REMOVAL 6-15 UNIT
	50+90	51+15			52.8					
RT	51+00	52+98	295.0							
RT	51+67	52+54				495	56			
	51+69	51+88		6.9						
RT	51+53	53+37							106	
LT	52+00	52+75	31.0							
LT, 26 FT	53+09									12
LT	53+10	53+24		14.4						
LT, 30 FT	53+13									8
LT	53+20	53+30				48				
	53+42	53+57			54.2					
GRANT DRIVE										
LT	59+83	60+47			49.2				64	
LT	60+47	60+55				28				
LINCOLN'S TOMB PARKING LOT										
RT	102+99	103+93				144.6				
LT	103+33	104+03				133.2				
RT	103+90					23.0				
TOTAL			326.0	21.3	156.2	300.8	571	56	170	20

EARTHWORK SCHEDULE					
LOCATION	STATION	TO STATION	TOPSOIL	EARTH	GRADING
			FUR & PLACE VAR DEPTH SQ. YD.	EXCAVATION SPECIAL CU YD	& SHAPING DITCHES FOOT
SPRINGFIELD AVENUE					
	50+79	53+57	507	280	
RT	51+41	53+35			211
LT	51+54	51+67			20
LT	52+38	53+05			75
TOTAL			507	280	306

SIDEWALK SCHEDULE			
LOCATION	STATION	TO STATION	SQ. FT.
SPRINGFIELD AVENUE			
LT	51+20	51+30	45
RT	51+25	52+77	1069
LT	53+20	53+30	48
TOTAL			1162

GUTTER SCHEDULE			
LOCATION	STATION	TO STATION	TYPE B FOOT
GRANT DRIVE			
LT	59+83	60+47	64.0
TOTAL			64.0

DRAINAGE SCHEDULE																			
STATION(S)	MANHOLE TYPE A			SPECIAL	END SECTIONS						PIPE		STORM SEWER						
	SANITARY		4 DIA		GRATING		FLAP		CULVERTS		SPECIAL		TRENCH						
	4 DIA	SPECIAL	INLET		NO. 1	CIP	12"	15"	EQV 15"	12"	15"	EQV 15"	GATE	TYPE 1	TYPE 1	TYPE 1	TYPE 1	TYPE 1	TYPE 1
SPRINGFIELD AVENUE																			
LT 51+85					1							1							
LT 51+85 - RT 51+85													40						5.3
RT 51+66 - RT 52+23																		43	1.4
RT 51+85									1										
RT 52+21 - RT 52+40																			28
RT 52+23				1	1														1.8
RT 52+23 - RT 52+37														16					
RT 52+23 - RT 52+40																			24
RT 52+37	1											1							
RT 52+40 - RT 52+53																		10	1.1
LT 53+12										1		1							
LT 53+12 - RT 53+38																	74		6.3
GRANT DRIVE																			
LT 59+83									1		1								
LT 59+83 - 60+45																	56		6.8
LT 60+45				1															
TOTAL =	1	1	1	1	1	1	1	1	1	1	1	2	40	16	56	74	53	52	22.7

FILE NAME: D:\46315-shs825-schedule.dgn	USER NAME: slava	DESIGNED: R.H.D.	REVISED: -
Default		DRAWN: S.D.K.	REVISED: -
		CHECKED: -	REVISED: -
		DATE: 12/19/13	REVISED: -

STATE OF ILLINOIS
DEPARTMENT OF TRANSPORTATION

SCHEDULE OF QUANTITIES	
LINCOLN'S TOMB SITE RENOVATIONS	
SCALE:	SHEET 5 OF 16 SHEETS
STA.	TO STA.

F.A. RTE.	SECTION	COUNTY	TOTAL SHEETS	SHEET NO.
			16	5
ILLINOIS REG. AND PROJECT			CONTRACT NO. 46315	

PAVING SCHEDULE																			
LOCATION	STATION	TO STATION	SURFACE AREA SQ. YD.	BIT MATLS PR CT GAL.	AGG PR CT TON	HMA SC "C" N70 TON	BINDER MACH METHOD TON	AGG AREA SQ. YD.	BASE CSE B TON	PCC PVT AREA SQ. YD.	B 4 IN. AREA SQ. YD.	PAVER BLOCKS SQ. FT.	PCC SHLD AREA SQ. YD.						
														PAV'T.	(ASPHALT SURFACE)	LEVELING	AGG.	6 IN. MAT	6 IN.
														1.5 INCH	10 INCH	SUB GRAN			
SPRINGFIELD AVENUE																			
LT	50+79	51+19								93.3	93.3								
	50+90	53+00	466.7	175.0	0.9	39.4	132.1	22.7											
LT	50+94	51+66							12.9										
LT	51+20	51+30						5.0	1.1										
RT	51+25	52+78						118.8	27.1										
	LT 51+30	LT 53+06										1585.0							
	RT 52+73	RT 53+40											52.8						
	53+00	53+57	100.0	37.5	0.2	8.5	23.7												
LT	53+20	53+30						5.3	1.2										
GRANT DRIVE																			
	59+83	60+47	184.9	69.3	0.4	15.5	57.5												
TOTAL =				282	1.5	63.4	213.3		42.3	93.3	93.3	1585.0	52.8						

PRIME APPLICATION RATES	
BIT MATLS PR CT	AGG PRIME COAT
0.375 GAL/SQ YD	5 LB/SQ YD

EROSION CONTROL SCHEDULE											
STATION(S)	PERMANENT EROSION CONTROL										
	STONE	RIPRAP	FILTER FABRIC	PERIMETER EROS. BAR.	INLET & PIPE PROTECT	SEEDING CL 1	FERT NUTR NITROGEN	AGR GROUND	MULCH METHOD	TURF REIN.	
	SQ. YD.	SQ. YD.	LIN. FT.	EACH	ACRE	POUND	POUND	POUND	TON	ACRE	SQ. YD.
SPRINGFIELD AVENUE											
LT 50+71 - 53+28			280								
RT 51+41 - 53+39											135
RT 52+55 - 53+34											48
RT 51+85				1							
RT 52+23				1							
LT 53+10	14.3	14.3									
GRANT DRIVE											
LT 59+83				1							
LT 60+45				1							
ENTIRE PROJECT					0.2	18	18	18	0.4	0.1	
TOTAL =	14.3	14.3	280.0	4	0.2	18.0	18.0	18.0	0.4	0.1	183

STRIPING SCHEDULE					
LOCATION	STATION	TO STATION	THERMOPLASTIC PAVEMENT MARKINGS		
			LETTER & SYMBOLS		
			6-INCH YELLOW FOOT	WHITE SQ. FT.	YELLOW SQ. FT.
SPRINGFIELD AVENUE					
LT	50+86				4.6
LT	50+89	51+01	154		
LT	51+05				4.6
LT	51+10	51+19	154		
LINCOLN'S TOMB PARKING LOT					
RT	102+99	103+93	200		13.8
LT	103+33	104+03	158		13.8
RT	103+90			23.0	
TOTAL =			666	23.0	36.8

MISCELLANEOUS SCHEDULE								
LOCATION	PIPE		CONCRETE PARKING BLOCKS	SIGN PANEL TYPE 1	METAL POST TYPE A	PROTECTIVE COAT (CONCRETE PAV'T, SIDEWALK, C & G)	TRAF CONT-PROT BLR 21	
	HANDRAIL FOOT	PIPE BOLLARDS EACH	EACH	SQ. FT.	FOOT	MOBILIZATION L SUM	SQ. YD.	
							L SUM	
LT 50+88				1.5	10			
LT 50+88				0.5				
LT 50+92			1					
LT 51+10				1.5	10			
LT 51+10				0.5				
LT 51+14			1					
LT 51+33		2						
LT 51+67	7							
RT 52+43				2	10			
ENTIRE PROJECT						1	253	1
TOTAL =	7	2	2	6.0	30	1	253	1

FILE NAME + D64E315-sh0800-schedule.dgn	USER NAME + Stover	DESIGNED - R.H.D.	REVISED -
		DRAWN - S.D.K.	REVISED -
		CHECKED -	REVISED -
		DATE - 12/19/13	REVISED -

STATE OF ILLINOIS
DEPARTMENT OF TRANSPORTATION

SCHEDULE OF QUANTITIES			
LINCOLN'S TOMB SITE RENOVATIONS			
SCALE:	SHEET 6 OF 16 SHEETS	STA.	TO STA.

P.A. RTE.	SECTION	COUNTY	TOTAL SHEETS	SHEET NO.
			16	6
			CONTRACT NO. 46315	
ILLINOIS FED. AID PROJECT				

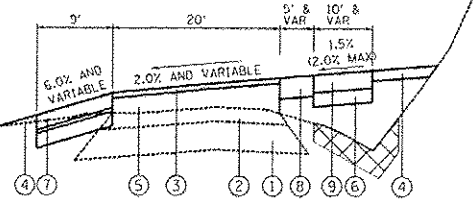
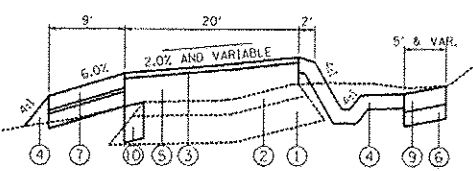
JOB NO. 250-061-43 YASCONCELLES ENGINEERING CORP. DESIGN FIRM REGISTRATION NUMBER 184-002107



LIST OF STANDARDS	
280001-07	TEMPORARY EROSION CONTROL SYSTEM
424001-07	PERPENDICULAR CURB RAMP
542301-03	PRECAST CONCRETE FLARED END SECTION
542311-04	TRAVERSABLE PIPE GRATE
602301-03	INLET TYPE A
602401-03	MANHOLE TYPE A
602601-02	PRECAST REINFORCED CONCRETE FLAT SLAB TOP
602701-02	MANHOLE STEPS
604001-03	FRAME AND LIDS TYPE 1
606201-02	TYPE B GUTTER, INLET OUTLET & ENTRANCE
701901-02	TRAFFIC CONTROL DEVICES
720001-01	SIGN PANEL MOUNTING DETAILS
720011-01	METAL POSTS FOR SIGNS, MARKERS & DELINEATORS
780001-03	TYPICAL PAVEMENT MARKINGS
BLR 21-9	TYPICAL APPLICATION OF TRAFFIC CONTROL DEVICES FOR CONSTRUCTION ON RURAL LOCAL HIGHWAYS

GENERAL NOTES

- 1) ALL ELEVATIONS ARE REFERENCED TO ELEVATIONS ESTABLISHED BY VASCONCELLES ENGINEERING CORP.
- 2) WHERE SECTION OR SUBSECTION MONUMENTS ARE ENCOUNTERED, THE ENGINEER SHALL BE NOTIFIED BEFORE SUCH MONUMENTS ARE REMOVED. THE CONTRACTOR SHALL PROTECT AND CAREFULLY PRESERVE ALL PROPERTY MARKERS AND MONUMENTS UNTIL THE OWNER AND AUTHORIZED SURVEYOR OR AGENT HAS WITNESSED OR OTHERWISE REFERENCED THEIR LOCATION. IF THE ENGINEER DECIDES TO HAVE THE CONTRACTOR RESET THE MONUMENT, THIS WORK WILL BE PAID FOR IN ACCORDANCE WITH ARTICLE 109.04.
- 3) THE CONTRACTOR SHALL CONTACT J.U.L.I.E. PRIOR TO ANY EXCAVATION TO HAVE ALL PUBLIC AND PRIVATE UTILITIES LOCATED.
- 4) THE CONTRACTOR SHALL BE RESPONSIBLE FOR PROTECTING UTILITY PROPERTY FROM CONSTRUCTION OPERATIONS AS OUTLINED IN ARTICLE 107.26 OF THE STANDARD SPECIFICATIONS. THE J.U.L.I.E. NUMBER IS (800) 892-0123. A MINIMUM OF 48 HOURS ADVANCE NOTICE IS REQUIRED. SEE SPECIAL PROVISIONS FOR STATUS OF UTILITIES, WITH UTILITY COMPANIES LISTED.
- 5) ANY REFERENCE TO THE STANDARDS THROUGHOUT THE PLANS SHALL BE INTERPRETED TO BE THE LATEST STANDARDS OF THE DEPARTMENT AS INCLUDED IN THE PLANS.
- 6) ALL DETAILS IN THE PLANS SHALL GOVERN CONSTRUCTION OF THIS PROJECT, AND IN CASE OF CONFLICT WITH ANY STANDARD DRAWINGS INCLUDED, THE SAID DETAILS SHALL TAKE PRECEDENCE AND GOVERN.
- 7) THE BASELINE SHOWN THROUGHOUT THE PLANS IS A "BEST FIT" ALIGNMENT OF THE CENTER OF THE EXISTING ROADWAYS FOR THE PURPOSE OF STATIONING AND DETERMINATION OF OFFSETS. IN MOST CASES IT APPROXIMATES THE PHYSICAL CENTER OF THE EXISTING OR PROPOSED ROADWAY SURFACE. THE QUANTITIES COMPUTED WERE DETERMINED BASED UPON THE ACTUAL WIDTH OF THE EXISTING ROADWAY IN RELATION TO THE PROPOSED ROADWAY WIDTHS. THE PHYSICAL CENTERLINE OF THE PROPOSED ROAD VARIES IN LOCATION TO ACHIEVE THE PROPOSED ROADWAY WIDTHS WITH THE LEAST INTERFERENCE WITH EXISTING TREES AND SLOPES. THE CONTRACTOR, AS DIRECTED BY THE ENGINEER, SHALL WORK TO ACHIEVE THE NOTED ROADWAY WIDTHS WITH THIS SAME CONCEPT OF THE LEAST INTERFERENCE WITH EXISTING TREES AND SLOPES.



TYPICAL SECTIONS

- LEGEND**
- 1) EXISTING AGGREGATE BASE COURSE (UNKNOWN DEPTH)
 - 2) EXISTING ASPHALT SURFACE (UNKNOWN DEPTH)
 - 3) PROPOSED 1 1/2" ASPHALT SURFACE COURSE N70
 - 4) PROPOSED 4" AND VARIABLE TOP SOIL
 - 5) PROPOSED LEVELING BINDER MACHINE METHOD, N70
 - 6) PROPOSED 4" AGGREGATE BASE COURSE TYPE B
 - 7) PROPOSED PAVER BLOCKS WITH AGGREGATE BASE
 - 8) PROPOSED 6" CONCRETE SHOULDER
 - 9) PROPOSED 5" CONCRETE SIDEWALK
 - 10) PROPOSED 10" AGGREGATE BASE COURSE TYPE B

FILE NAME *	USER NAME *	DESIGNED -	REVISED -
0646310-sh027-gennote.dgn	Stover	R.H.D.	
		DRAWN -	REVISED -
		S.D.K.	
		CHECKED -	REVISED -
		R.H.D.	
		DATE -	REVISED -
		12/19/13	

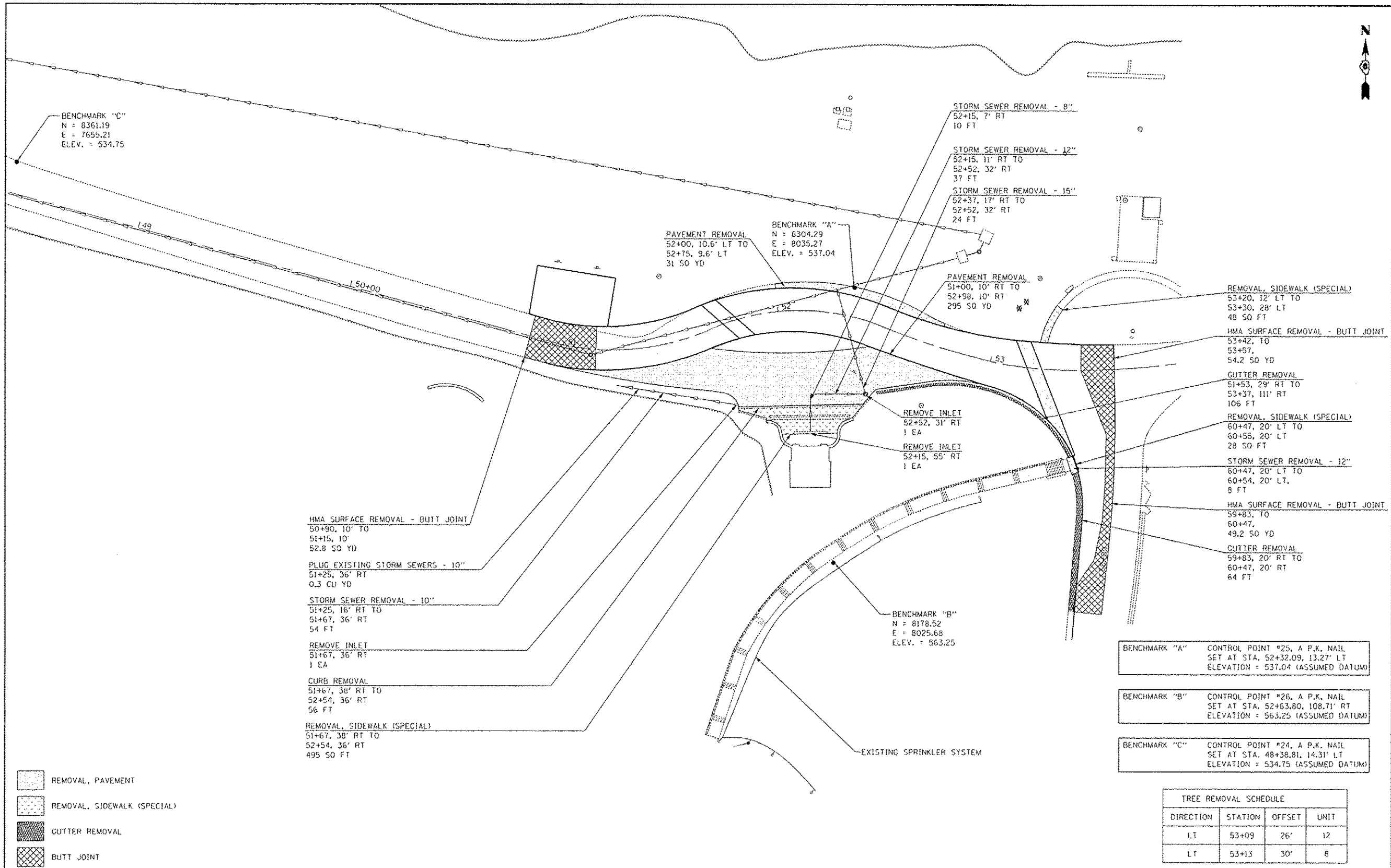
STATE OF ILLINOIS
DEPARTMENT OF TRANSPORTATION

GENERAL NOTES, STANDARDS, AND TYPICAL SECTIONS
LINCOLN'S TOMB SITE RENOVATIONS

SCALE: SHEET 7 OF 16 SHEETS STA. TO STA.

F.A. RTE.	SECTION	COUNTY	TOTAL SHEETS	SHEET NO.
		SANGAMON	16	7
CONTRACT NO. 46315			ILLINOIS FED. AID PROJECT	

JOB NO. 250-061-X3 VASCONCELLES ENGINEERING CORP. DESIGN FIRM REGISTRATION NUMBER 184-002107



- REMOVAL, PAVEMENT
- REMOVAL, SIDEWALK (SPECIAL)
- CUTTER REMOVAL
- BUTT JOINT

HMA SURFACE REMOVAL - BUTT JOINT
 50+90, 10' TO
 51+15, 10'
 52.8 SQ YD

PLUG EXISTING STORM SEWERS - 10"
 51+25, 36' RT
 0.3 CU YD

STORM SEWER REMOVAL - 10"
 51+25, 16' RT TO
 51+67, 36' RT
 54 FT

REMOVE INLET
 51+67, 36' RT
 1 EA

CURB REMOVAL
 51+67, 38' RT TO
 52+54, 36' RT
 56 FT

REMOVAL, SIDEWALK (SPECIAL)
 51+67, 38' RT TO
 52+54, 36' RT
 495 SQ FT

STORM SEWER REMOVAL - 8"
 52+15, 7' RT
 10 FT

STORM SEWER REMOVAL - 12"
 52+15, 11' RT TO
 52+52, 32' RT
 37 FT

STORM SEWER REMOVAL - 15"
 52+37, 17' RT TO
 52+52, 32' RT
 24 FT

PAVEMENT REMOVAL
 52+00, 10.6' LT TO
 52+75, 9.6' LT
 31 SQ YD

PAVEMENT REMOVAL
 51+00, 10' RT TO
 52+98, 10' RT
 295 SQ YD

REMOVE INLET
 52+52, 31' RT
 1 EA

REMOVE INLET
 52+15, 55' RT
 1 EA

REMOVAL, SIDEWALK (SPECIAL)
 53+20, 12' LT TO
 53+30, 28' LT
 48 SQ FT

HMA SURFACE REMOVAL - BUTT JOINT
 53+42, TO
 53+57,
 54.2 SQ YD

CUTTER REMOVAL
 51+53, 29' RT TO
 53+37, 111' RT
 106 FT

REMOVAL, SIDEWALK (SPECIAL)
 60+47, 20' LT TO
 60+55, 20' LT
 28 SQ FT

STORM SEWER REMOVAL - 12"
 60+47, 20' LT TO
 60+54, 20' LT,
 8 FT

HMA SURFACE REMOVAL - BUTT JOINT
 59+83, TO
 60+47,
 49.2 SQ YD

CUTTER REMOVAL
 59+83, 20' RT TO
 60+47, 20' RT
 64 FT

BENCHMARK "A" CONTROL POINT #25, A P.K. NAIL
 SET AT STA. 52+32.09, 13.27' LT
 ELEVATION = 537.04 (ASSUMED DATUM)

BENCHMARK "B" CONTROL POINT #26, A P.K. NAIL
 SET AT STA. 52+63.80, 108.71' RT
 ELEVATION = 563.25 (ASSUMED DATUM)

BENCHMARK "C" CONTROL POINT #24, A P.K. NAIL
 SET AT STA. 48+38.81, 14.31' LT
 ELEVATION = 534.75 (ASSUMED DATUM)

TREE REMOVAL SCHEDULE			
DIRECTION	STATION	OFFSET	UNIT
LT	53+09	26'	12
LT	53+13	30'	8

FILE NAME 0546315-rt-008-plan.dgn	USER NAME Stavak	DESIGNED - R.H.D.	REVISED -
Default		DRAWN - J.T.T.	REVISED -
	PLOT SCALE = 20,000' / in.	CHECKED - S.D.K.	REVISED -
	PLOT DATE = 12/19/2013	DATE - 12/19/13	REVISED -

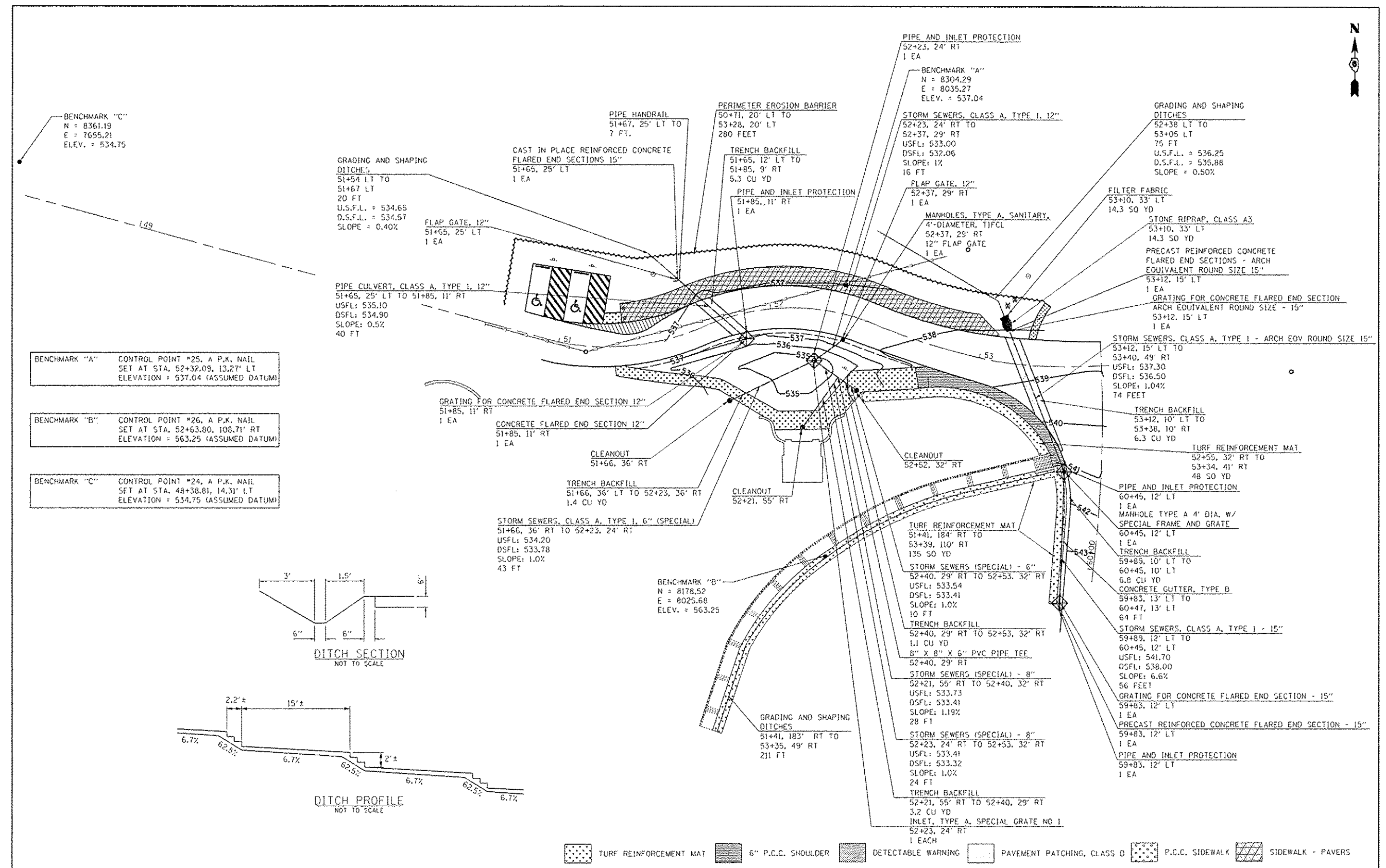
**STATE OF ILLINOIS
 DEPARTMENT OF TRANSPORTATION**

**EXISTING PLAN SHEET
 LINCOLN'S TOMB, RECEIVING VAULT RENOVATIONS**

SCALE: 1" = 20' SHEET 8 OF 16 SHEETS STA. TO STA.

F.A. RTE.	SECTION	COUNTY	TOTAL SHEETS	SHEET NO.
		SANGAMON	16	8
CONTRACT NO. 46315				
ILLINOIS FED. AID PROJECT				

JOB NO. 250-081-33 VASCONCELLES ENGINEERING CORP. DESIGN FIRM REGISTRATION NUMBER 184-0021D

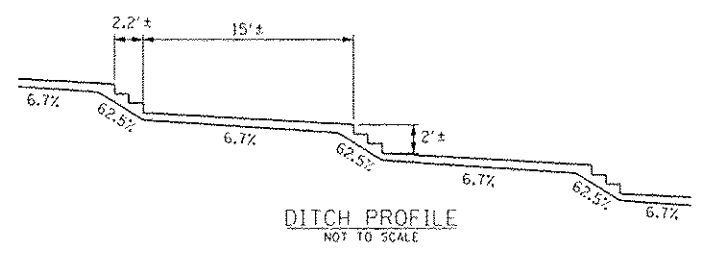
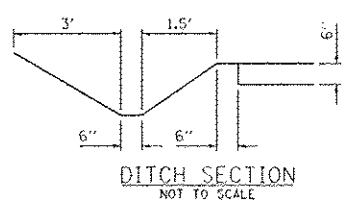


BENCHMARK "C"
N = 8361.19
E = 7655.21
ELEV. = 534.75

BENCHMARK "A" CONTROL POINT #25, A P.K. NAIL
SET AT STA. 52+32.09, 13.27' LT
ELEVATION = 537.04 (ASSUMED DATUM)

BENCHMARK "B" CONTROL POINT #26, A P.K. NAIL
SET AT STA. 52+63.80, 108.71' RT
ELEVATION = 563.25 (ASSUMED DATUM)

BENCHMARK "C" CONTROL POINT #24, A P.K. NAIL
SET AT STA. 48+38.81, 14.31' LT
ELEVATION = 534.75 (ASSUMED DATUM)



- TURF REINFORCEMENT MAT
- 6" P.C.C. SHOULDER
- DETECTABLE WARNING
- PAVEMENT PATCHING, CLASS D
- P.C.C. SIDEWALK
- SIDEWALK - PAVERS

FILE NAME =	USER NAME = StewK	DESIGNED = R.H.D.	REVISED =
064E015-ahub791plan.dgn		DRAWN = J.T.T.	REVISED =
Default		CHECKED = S.D.K.	REVISED =
		DATE = 12/19/13	REVISED =

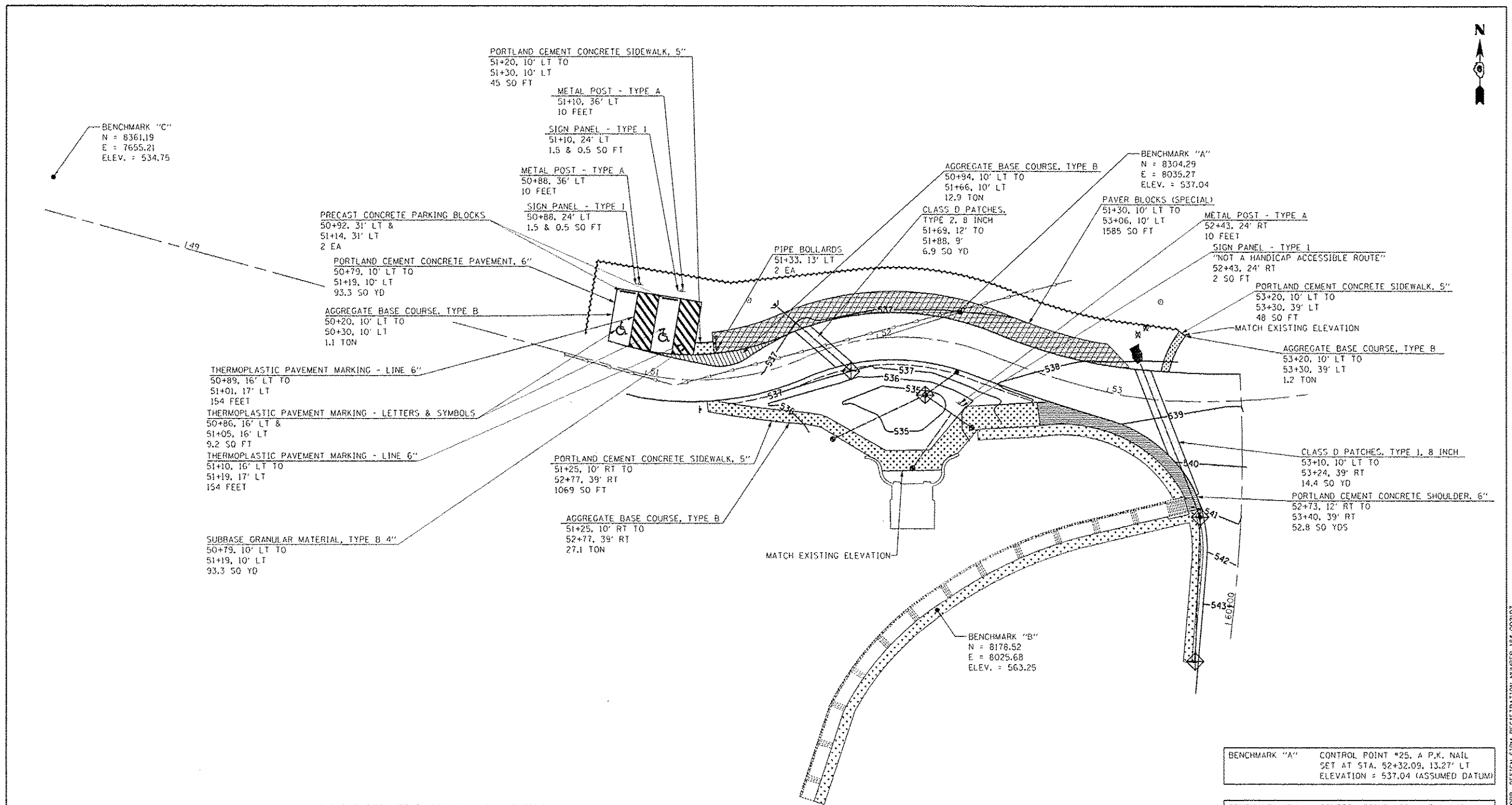
**STATE OF ILLINOIS
DEPARTMENT OF TRANSPORTATION**

**PROPOSED DRAINAGE PLAN
LINCOLN'S TOMB, RECEIVING VAULT RENOVATIONS**

SCALE: 1" = 20' SHEET 9 OF 16 SHEETS STA. TO STA.

F.A. RTE.	SECTION	COUNTY	TOTAL SHEETS	SHEET NO.
		SANGAMON	16	9
CONTRACT NO. 46315			ILLINOIS FED. AID PROJECT	

JOB NO. 250-061-X3 VASCONCELLOS ENGINEERING CORP. DESIGN FIRM REGISTRATION NUMBER 184-002107



BENCHMARK "C"
 N = 8361.19
 E = 7655.21
 ELEV. = 534.75

BENCHMARK "A"
 N = 8304.29
 E = 8035.27
 ELEV. = 537.04

BENCHMARK "B"
 N = 8176.52
 E = 8025.68
 ELEV. = 563.25

PATCHING TYPES ARE BASED UPON THE ENTIRE
 PATCH AT EACH LOCATION SINCE THE PROJECT
 LIMITS WILL BE CLOSED TO TRAFFIC DURING
 CONSTRUCTION

BENCHMARK "A"	CONTROL POINT #25, A P.K. NAIL SET AT STA. 52+32.09, 13.27' LT ELEVATION = 537.04 (ASSUMED DATUM)
BENCHMARK "B"	CONTROL POINT #26, A P.K. NAIL SET AT STA. 52+63.80, 108.71' RT ELEVATION = 563.25 (ASSUMED DATUM)
BENCHMARK "C"	CONTROL POINT #24, A P.K. NAIL SET AT STA. 48+38.01, 14.31' LT ELEVATION = 534.75 (ASSUMED DATUM)

- TURF REINFORCEMENT MAT
- 6" P.C.C. SHOULDER
- DETECTABLE WARNING
- PAVEMENT PATCHING, CLASS D
- P.C.C. SIDEWALK
- SIDEWALK - PAVERS

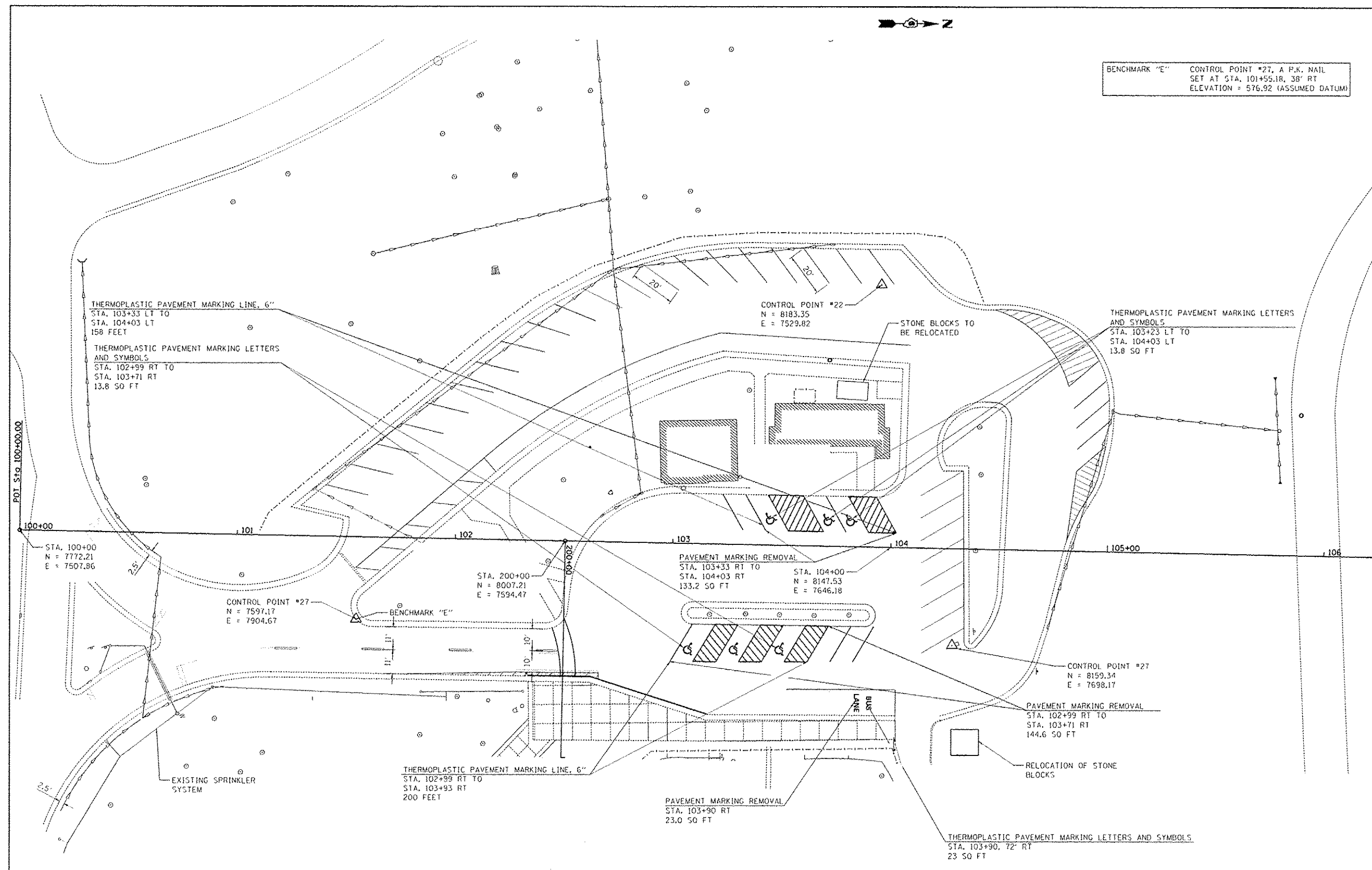
FILE NAME = 0646215-shd10-plan.dgn	USER NAME = stevak	DESIGNED - R.H.D.	REVISED -
		DRAWN - J.T.T.	REVISED -
		CHECKED - S.D.K.	REVISED -
		DATE - 12/19/13	REVISED -

**STATE OF ILLINOIS
 DEPARTMENT OF TRANSPORTATION**

PROPOSED PAVING PLAN	
LINCOLN'S TOMB, RECEIVING VAULT RENOVATIONS	
SCALE: 1" = 20'	SHEET 10 OF 16 SHEETS
STA. _____	TO STA. _____

F.A. RTE.	SECTION	COUNTY	TOTAL SHEETS	SHEET NO.
		SANGAMON	16	10
ILLINOIS FED. AID PROJECT				
CONTRACT NO. 46315				

JOB NO. 250-081-X3 VASCONCELLES ENGINEERING CORP. DESIGN FIRM REGISTRATION NUMBER 184-00210



BENCHMARK "E" CONTROL POINT #27, A P.K. NAIL
 SET AT STA. 101+55.18, 38' RT
 ELEVATION = 576.92 (ASSUMED DATUM)

FILE NAME 0640315-shl011-plan.dgn	USER NAME Stevak	DESIGNED - R.H.D.	REVISED -
SHT_PLAN	PLOT SCALE = 20.0000 1" = 20'	DRAWN - J.T.T.	REVISED -
	PLOT DATE = 12/19/2013	CHECKED - R.H.D.	REVISED -
		DATE - 12/19/13	REVISED -

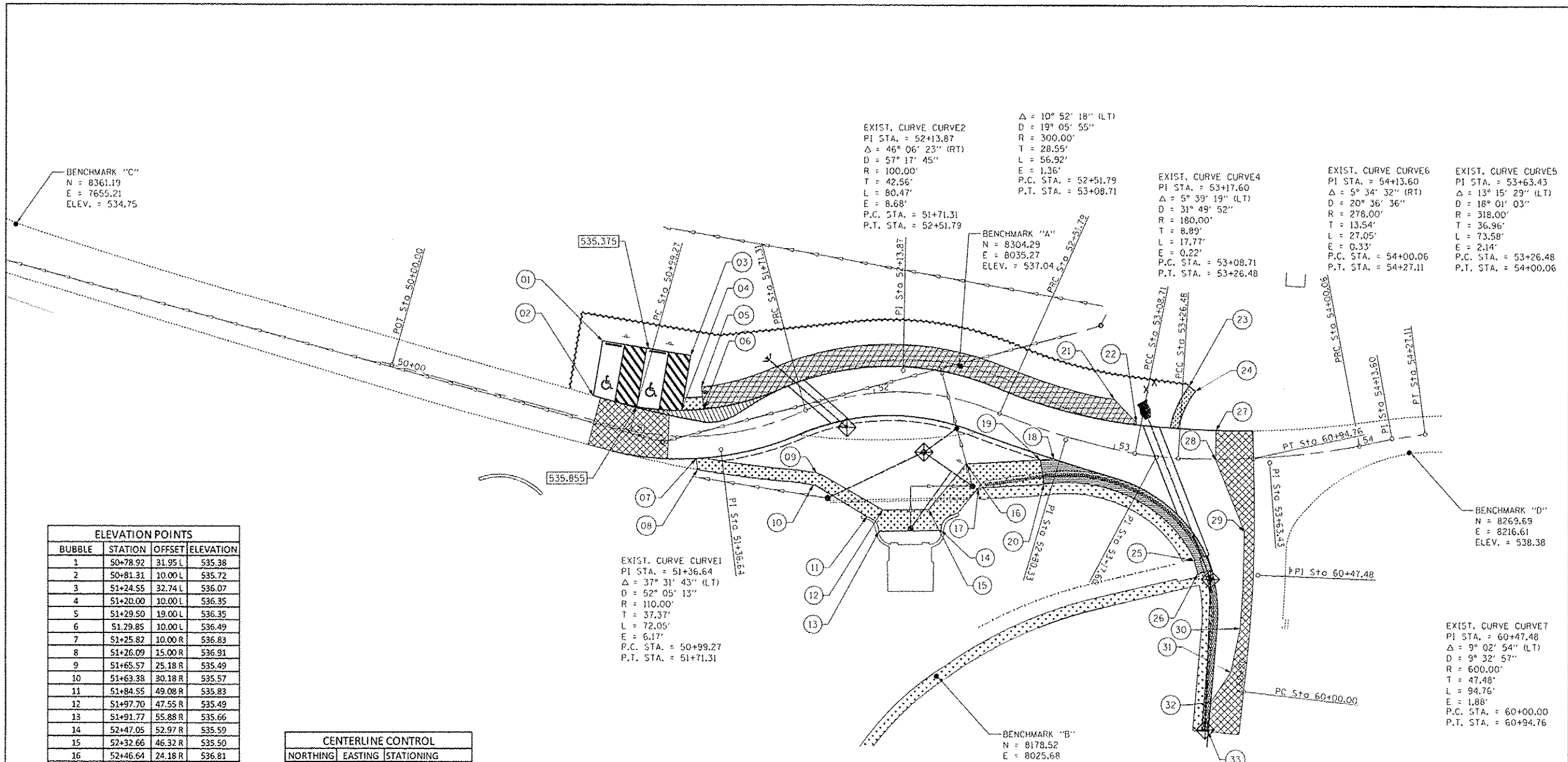
**STATE OF ILLINOIS
 DEPARTMENT OF TRANSPORTATION**

**PLAN SHEET STATION 200+00 - 201+00
 LINCOLN'S TOMB SITE RENOVATIONS**

SCALE: 1" = 20' SHEET 11 OF 16 SHEETS STA. 200+00 TO STA. 201+00

F.A. RTE.	SECTION	COUNTY	TOTAL SHEETS	SHEET NO.
	PARK ROADS	SANGAMON	16	11
CONTRACT NO. 46315			ILLINOIS FED. AID PROJECT	

JOB NO. 250-061-X3 VASCONCELLES ENGINEERING CORP. DESIGN FIRM REGISTRATION NUMBER 184-002107



ELEVATION POINTS			
BUBBLE	STATION	OFFSET	ELEVATION
1	50+78.92	31.95 L	535.38
2	50+81.31	10.00 L	535.72
3	51+24.55	32.74 L	536.07
4	51+20.00	10.00 L	536.35
5	51+29.50	19.00 L	536.35
6	51+29.85	10.00 L	536.49
7	51+25.82	10.00 R	536.83
8	51+26.09	15.00 R	536.91
9	51+65.57	25.18 R	535.49
10	51+63.38	30.18 R	535.57
11	51+84.55	49.08 R	535.83
12	51+97.70	47.55 R	535.49
13	51+91.77	55.88 R	535.66
14	52+47.05	52.97 R	535.59
15	52+32.66	46.32 R	535.50
16	52+46.64	24.18 R	536.81
17	52+56.61	31.31 R	536.96
18	52+78.04	10.00 R	538.88
19	52+73.11	12.22 R	538.58
20	52+77.26	21.15 R	538.73
21	52+95.41	19.00 L	536.96
22	53+06.81	11.00 L	537.53
23	53+29.88	29.40 L	538.24
24	53+32.74	27.53 L	538.24
25	60+52.39	24.08 L	541.10
26	60+46.78	22.42 L	541.20
27	61+06.25	15.00 L	N/A
28	60+94.62	15.26 L	N/A
29	60+64.94	4.00 L	N/A
30	60+25.31	4.00 L	N/A
31	60+07.03	6.00 L	N/A
32	59+93.95	12.77 L	N/A
33	59+82.45	12.48 L	N/A

CENTERLINE CONTROL		
NORTHING	EASTING	STATIONING
8304.46	7806.76	P.O.T. STA. 50+00.00
8278.03	7902.44	P.C. STA. 50+99.27
8286.43	7972.71	P.R.C. STA. 51+71.31
8285.16	8051.02	P.R.C. STA. 52+51.79
8269.00	8105.51	P.C.C. STA. 53+08.71
8267.06	8123.17	P.C. STA. 53+26.48
8272.26	8196.40	P.C. STA. 54+00.06
8277.08	8223.01	P.T. STA. 54+27.11
8172.57	8149.74	P.C. STA. 60+00.00
8267.15	8153.58	P.T. STA. 60+94.76
8270.29	7939.01	P.I. STA. 51+36.64
8302.46	8012.14	P.I. STA. 52+13.87
8274.49	8077.50	P.I. STA. 52+80.33
8267.59	8114.29	P.I. STA. 53+17.60
8265.40	8160.09	P.I. STA. 53+63.43
8275.32	8209.59	P.I. STA. 54+13.60
8219.71	8155.40	P.I. STA. 60+47.48

- BENCHMARK "A" CONTROL POINT #25, A P.K. NAIL SET AT STA. 52+32.09, 13.27' LT ELEVATION = 537.04 (ASSUMED DATUM)
- BENCHMARK "B" CONTROL POINT #26, A P.K. NAIL SET AT STA. 52+63.80, 108.71' RT ELEVATION = 563.25 (ASSUMED DATUM)
- BENCHMARK "C" CONTROL POINT #24, A P.K. NAIL SET AT STA. 48+38.81, 14.31' LT ELEVATION = 534.75 (ASSUMED DATUM)
- BENCHMARK "D" CONTROL POINT #31, A P.K. NAIL SET AT STA. 54+19.58, 6.5' RT ELEVATION = 538.376 (ASSUMED DATUM)

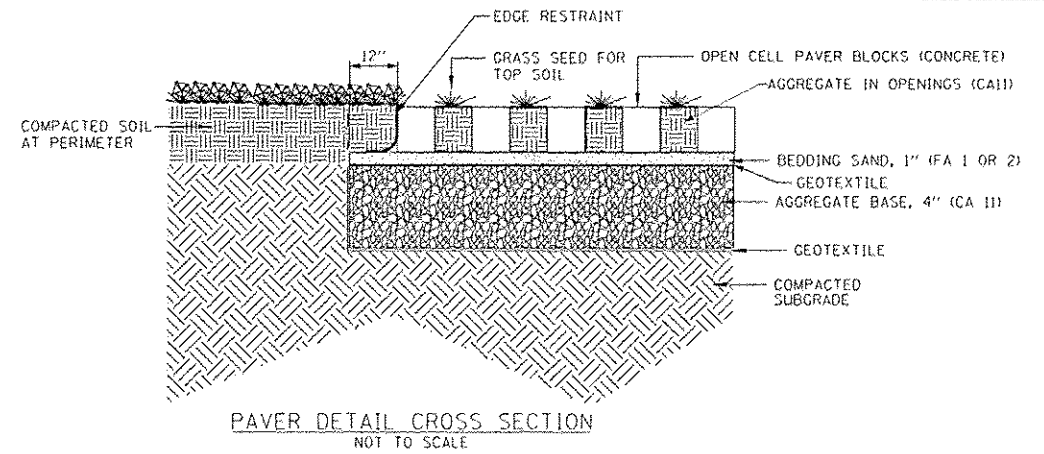
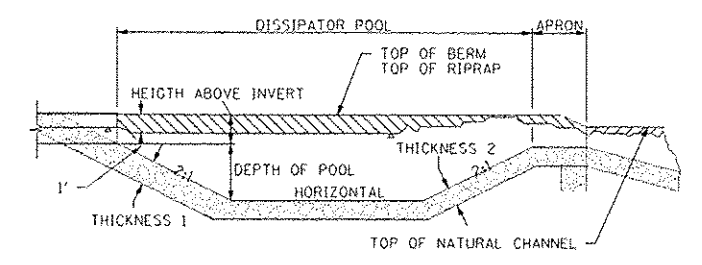
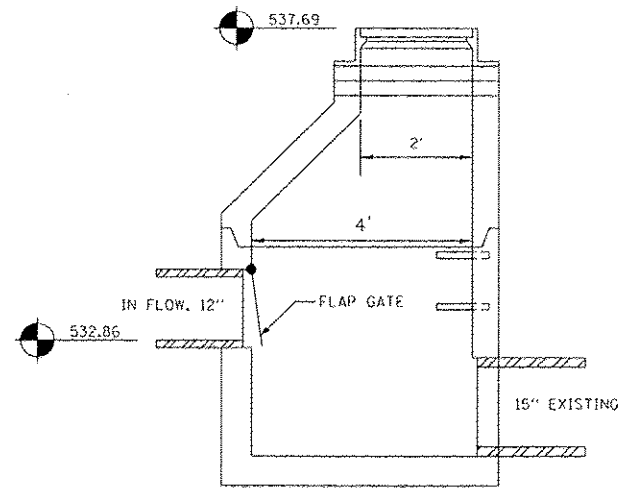
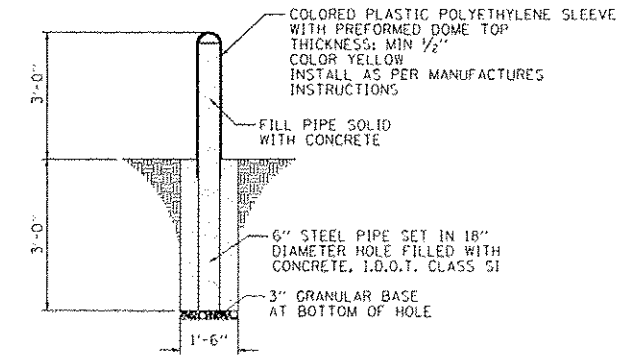
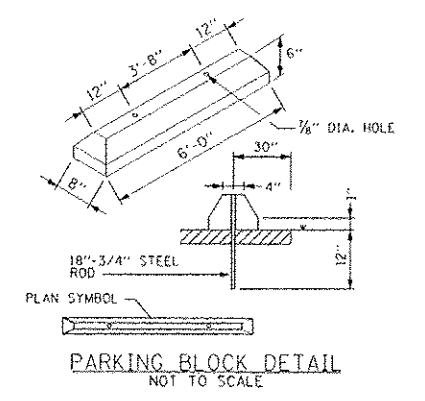
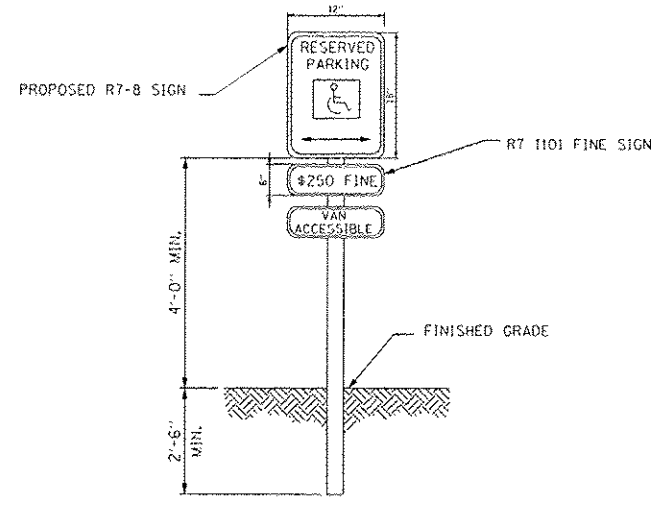
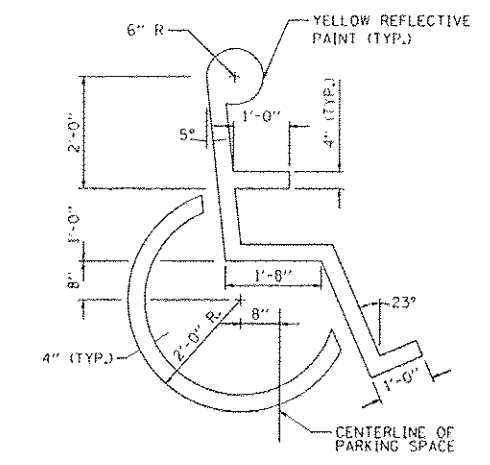
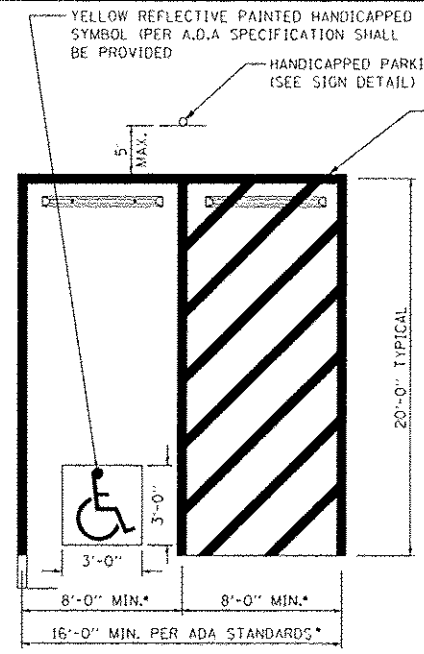
FILE NAME - D646315-41812-plan.dgn	USER NAME - Stavek	DESIGNED - R.H.D.	REVISED -
Default		DRAWN - J.T.T.	REVISED -
		CHECKED - S.D.K.	REVISED -
		DATE - 12/19/13	REVISED -

**STATE OF ILLINOIS
DEPARTMENT OF TRANSPORTATION**

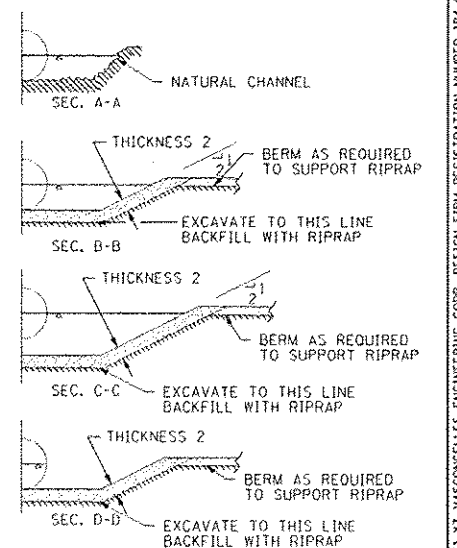
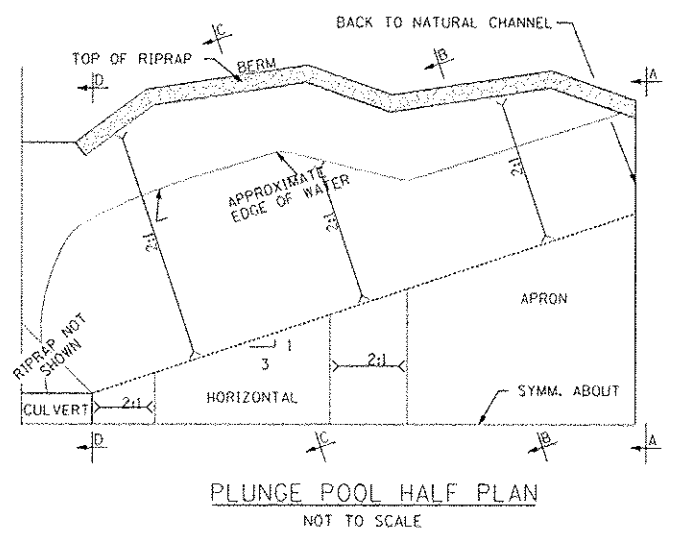
SURFACE ELEVATIONS	
LINCOLN'S TOMB, RECEIVING VAULT RENOVATIONS	
SCALE: 1" = 20'	SHEET 12 OF 16 SHEETS
STA. TO STA.	

F.A. RTE.	SECTION	COUNTY	TOTAL SHEETS	SHEET NO.
		SANGAMON	16	12
CONTRACT NO. 46315			ILLINOIS FED. AID PROJECT	

JOB NO. 250-081-43 VASCONCELLES ENGINEERING CORP. DESIGN FIRM REGISTRATION NUMBER 184-000107



RIPRAP BASIN SIZING										
STATION	PIPE SIZE	RIPRAP AREA (SQ. YD.)	POOL LENGTH (FEET)	APRON LENGTH (FEET)	DEPTH OF POOL (FEET)	HEIGHT ABOVE INVERT (FEET)	RIPRAP GRAD.	THICK. 1 (FEET)	THICK. 2 (FEET)	
LT 53+10	15"	14.3	5	2	0.3	0.8	RR 3	1.7	1.3	



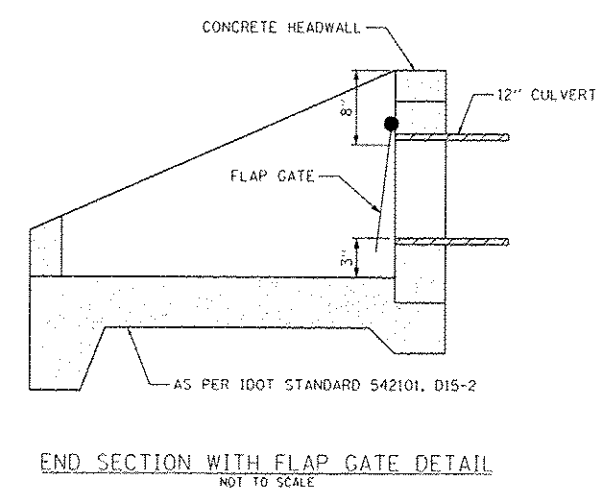
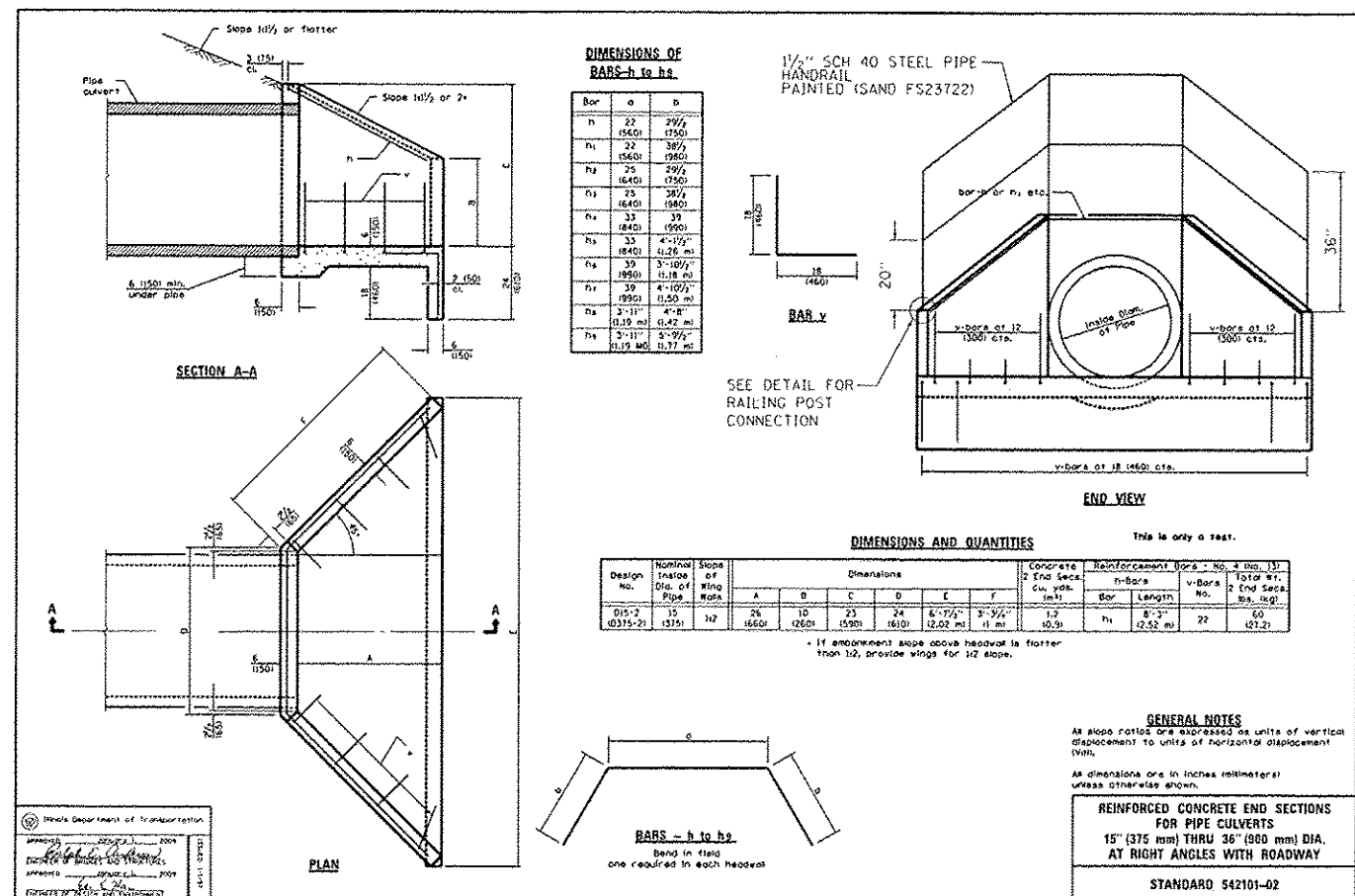
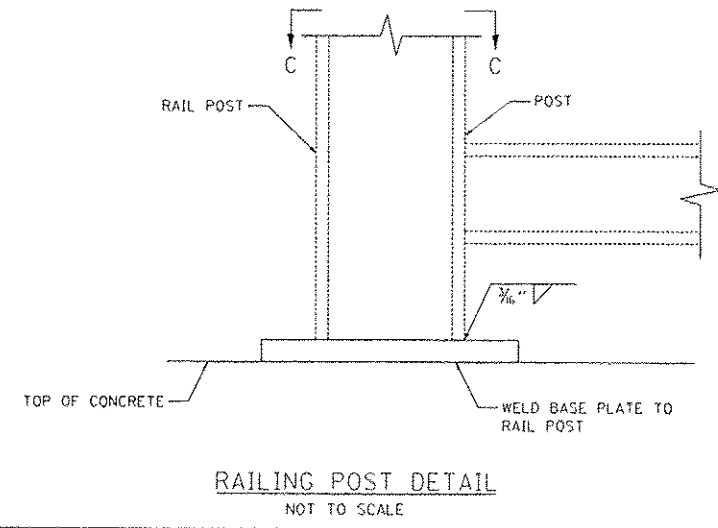
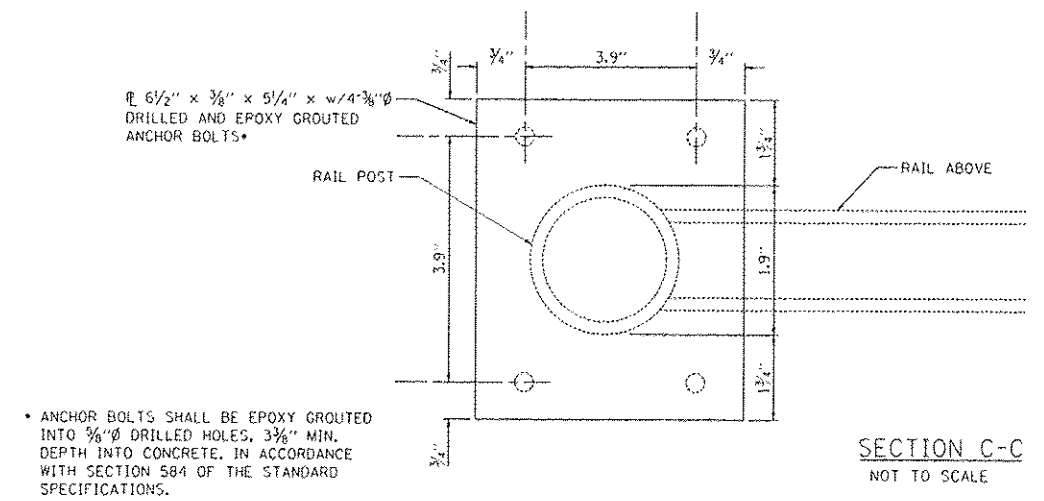
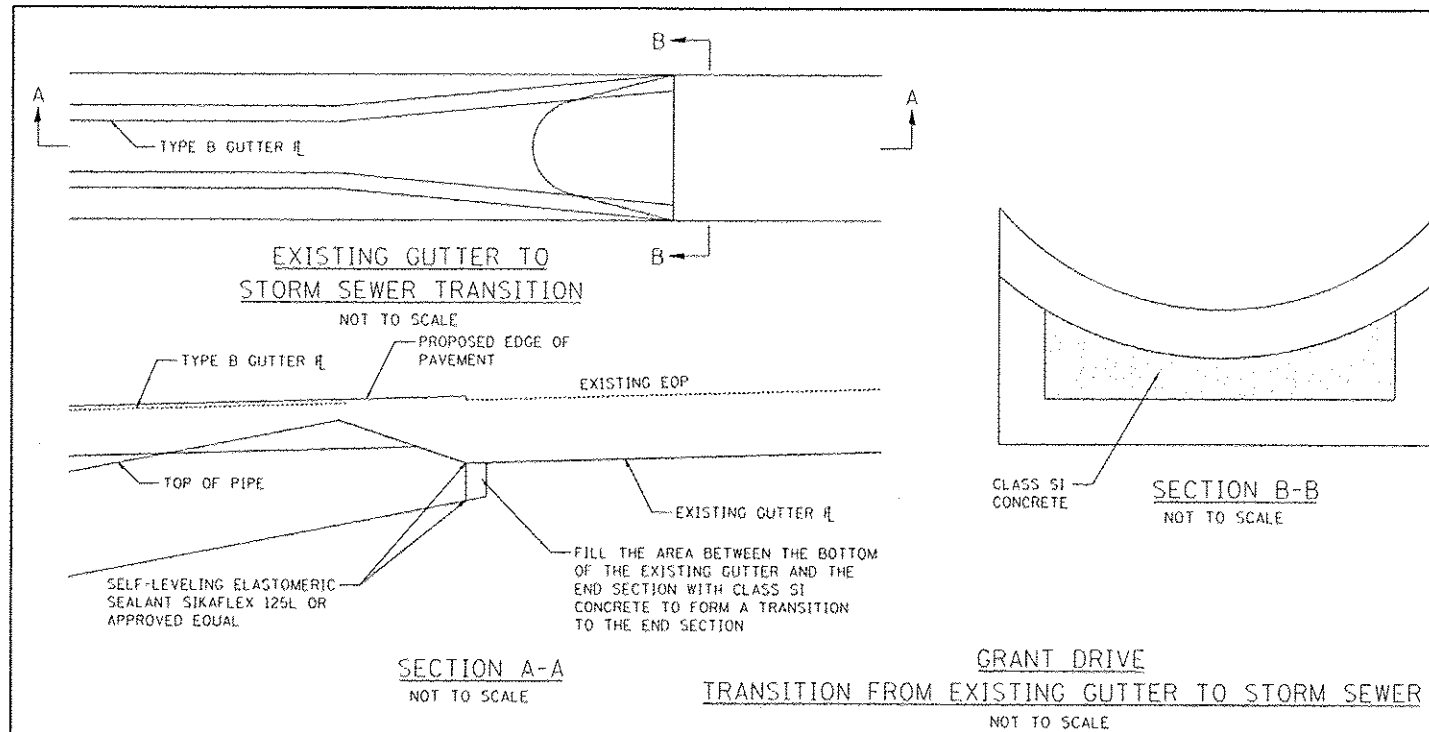
FILE NAME D:\6315\sh1813-details.dgn	USER NAME Stavok	DESIGNED - R.H.D.	REVISED -
Default	Plot Scale = 20.00 / 1 in.	DRAWN - J.T.T.	REVISED -
	Plot Date = 12/19/2013	CHECKED - S.O.K.	REVISED -
		DATE - 12/19/13	REVISED -

STATE OF ILLINOIS
DEPARTMENT OF TRANSPORTATION

DETAILS
LINCOLN'S TOMB SITE RENOVATIONS
SCALE: 1" = 20' SHEET 13 OF 16 SHEETS STA. TO STA.

F.A. RTE.	SECTION	COUNTY	TOTAL SHEETS	SHEET NO.
		SANGAMON	16	13
			CONTRACT NO. 46315	
ILLINOIS FED. AID PROJECT				

JOB NO. 250-061-X3 VASCONCELLES ENGINEERING CORP. DESIGN FIRM REGISTRATION NUMBER 184-00210



FILE NAME = DG46315-shs014-details.dgn	USER NAME = Szwark	DESIGNED - R.H.D.	REVISED -
Default	PL01 SCALE = 20.00' / 1" / 100'	DRAWN - J.T.T.	REVISED -
	PL01 DATE = 12/19/2013	CHECKED - S.D.K.	REVISED -
		DATE - 12/19/13	REVISED -

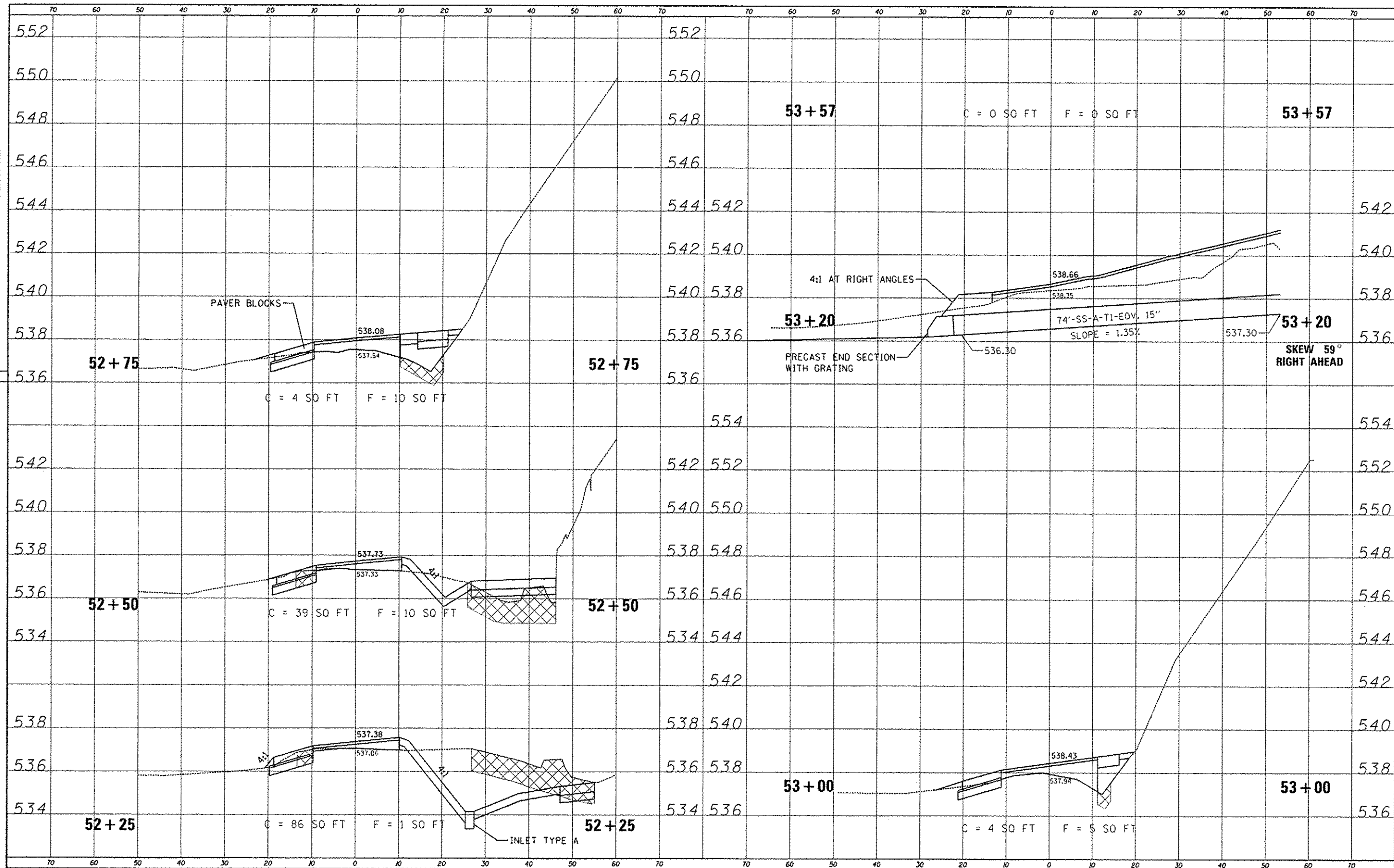
STATE OF ILLINOIS
DEPARTMENT OF TRANSPORTATION

DETAILS		F.A. RTE.	SECTION	COUNTY	TOTAL SHEETS	SHEET NO.
LINCOLN'S TOMB SITE RENOVATIONS				SANGAMON	16	14
SCALE:	SHEET 14 OF 16 SHEETS	STA.	TO STA.	CONTRACT NO. 46315		
ILLINOIS FED. AID PROJECT						

JOB NO. 250-061-X3 VASCCELLES ENGINEERING CORP. DESIGN FIRM REGISTRATION NUMBER 184-002107

DATE	
BY	
DESIGNED	
DRAWN	
CHECKED	
REVISIONS	
PROJECT	
PROFIT	
TEMPLATE	
NOTE BOOK	
AREA CHECKED	
NO.	

DATE	
BY	
DESIGNED	
DRAWN	
CHECKED	
REVISIONS	
PROJECT	
PROFIT	
TEMPLATE	
NOTE BOOK	
AREA CHECKED	
NO.	



FILE NAME 0046315-181815-1-section.dgn	USER NAME Slovak	DESIGNED R.H.D.	REVISIONS -	STATE OF ILLINOIS DEPARTMENT OF TRANSPORTATION	CROSS SECTIONS LINCOLN'S TOMB, RECEIVING VAULT RENOVATIONS		F.A. RTE.	SECTION	COUNTY	TOTAL SHEETS	SHEET NO.	
Default	PLOT SCALE 1/8"=1'-0"	CHECKED -	REVISIONS -		SCALE 1"=10'	SHEET 16 OF 16 SHEETS	STA. 52+25.00	TO STA. 52+75.01	SANGAMON	16	16	
	PLOT DATE 12/19/2013	DATE 12/19/13	REVISIONS -						CONTRACT NO. 46315		ILLINOIS FED. AID PROJECT	

JOB NO. 250-081-23 VASCONCELLES ENGINEERING CORP. DESIGN FIRM REGISTRATION NUMBER 184-002107