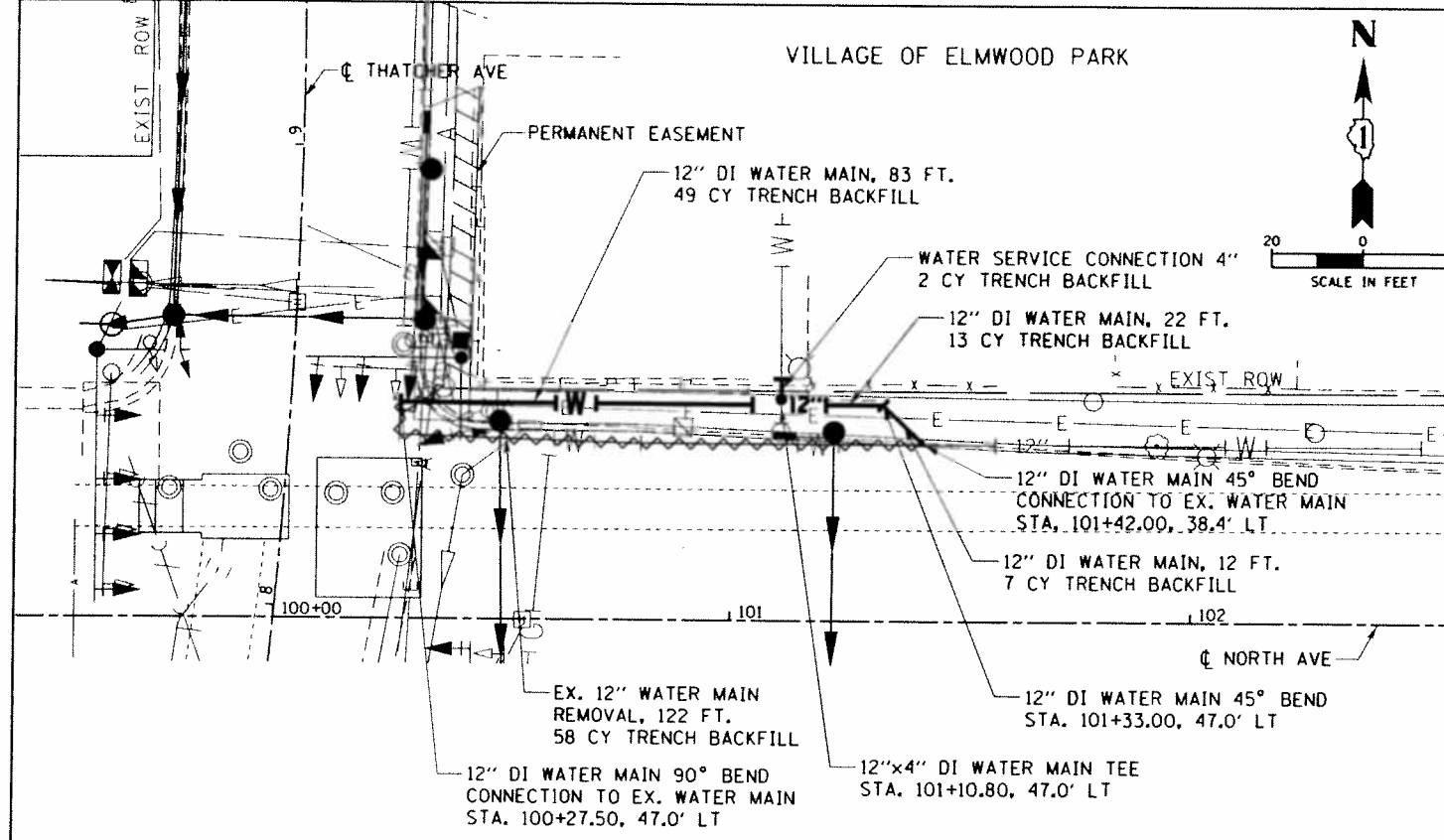
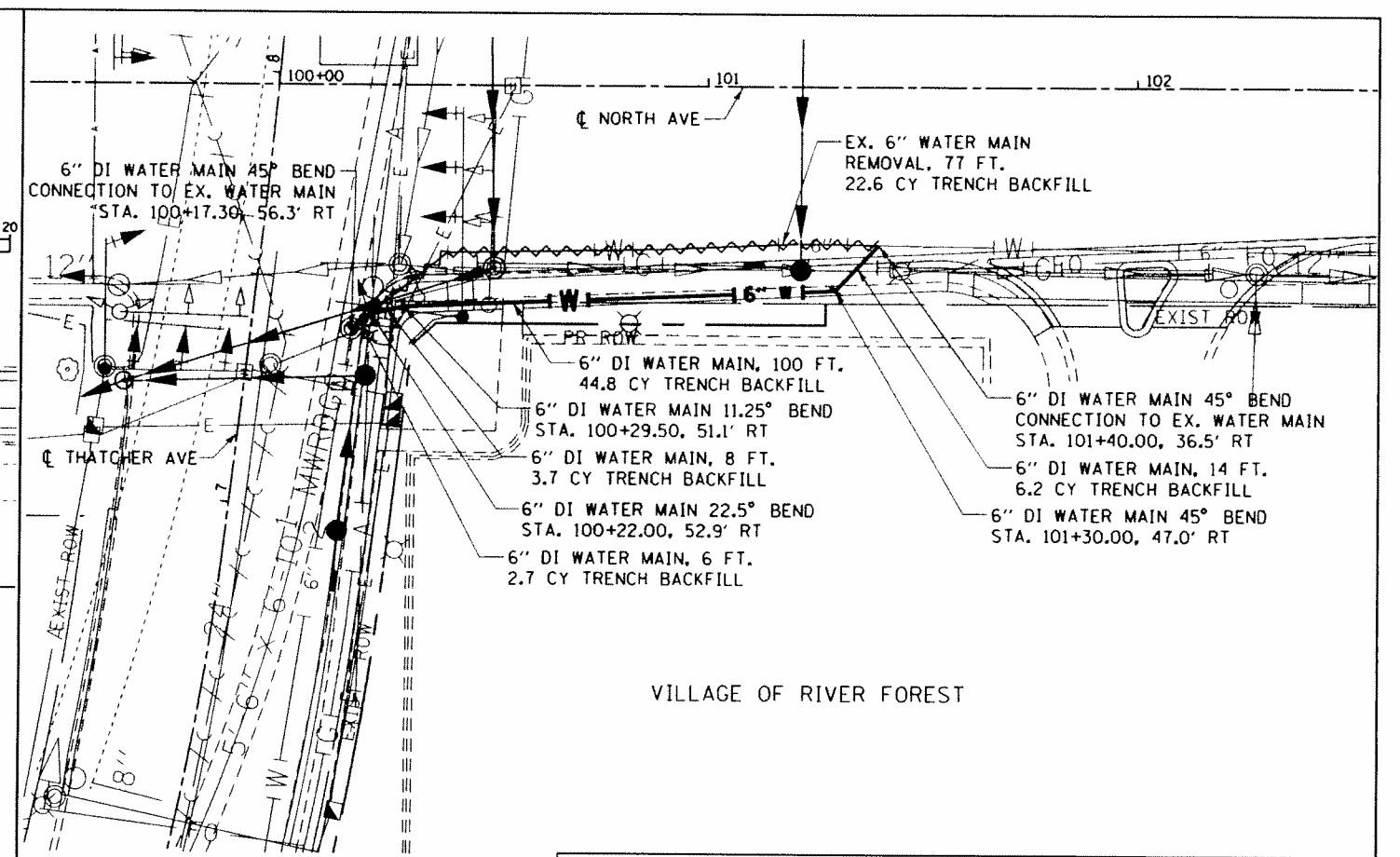


PLAN	DATE
BY	
CHECKED	
DATE	
NOTE BOOK NO.	
DATE FILED	

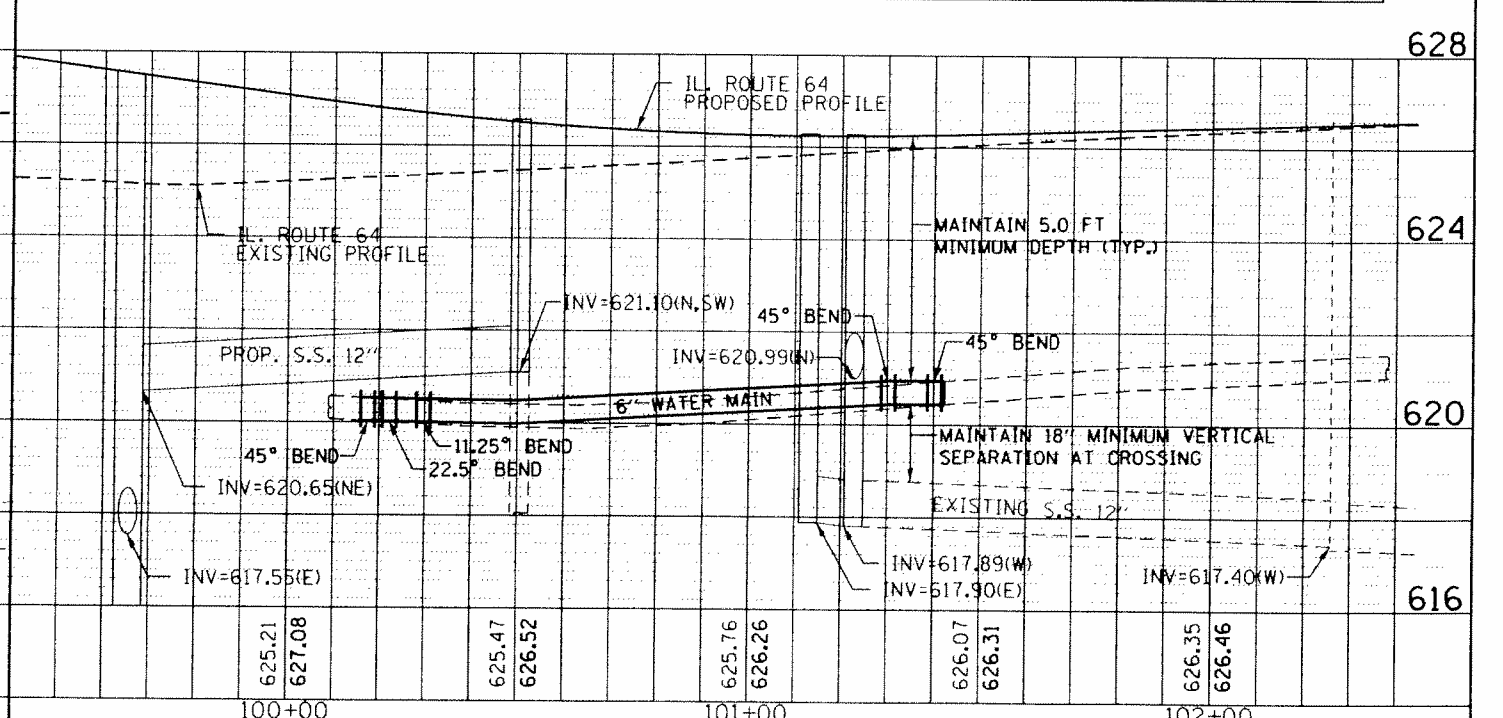
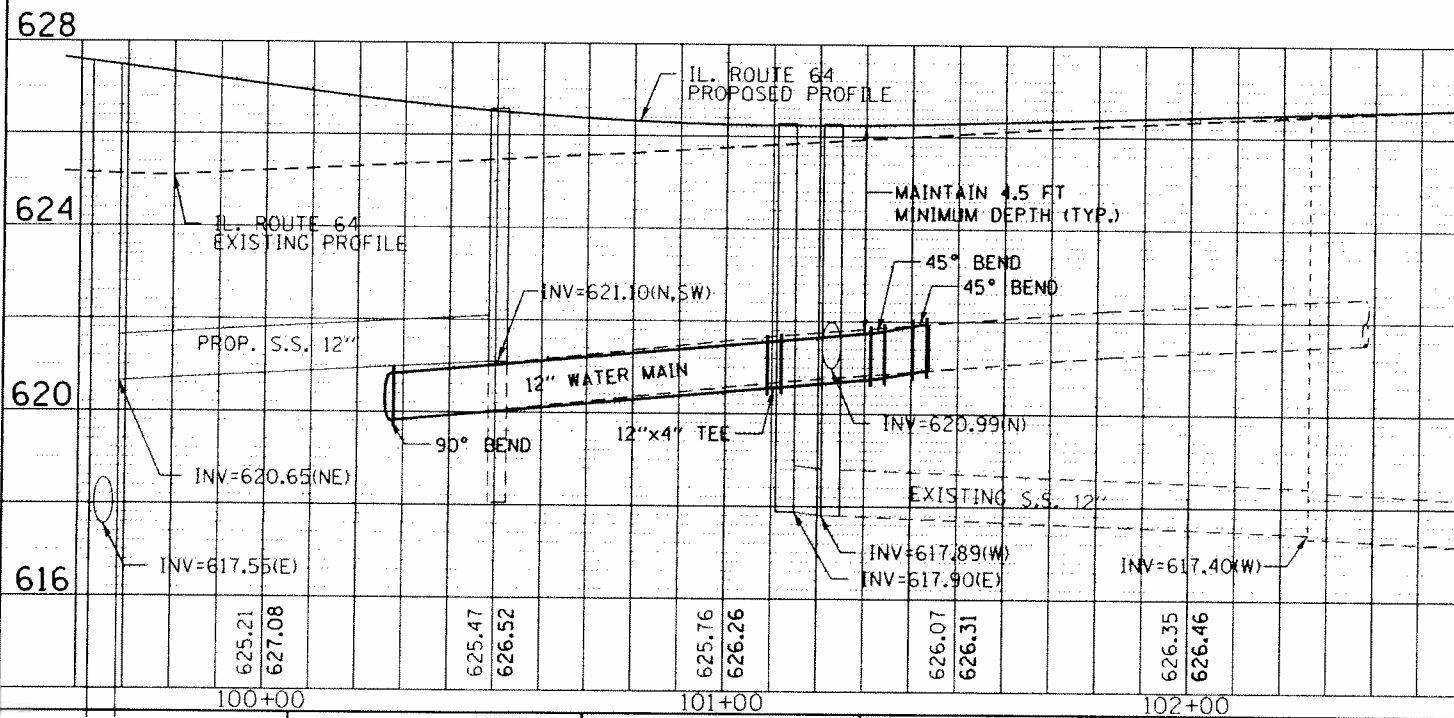
PROFILE	DATE
BY	
CHECKED	
DATE	
NOTE BOOK NO.	
DATE FILED	



QUANTITIES IN ELMWOOD PARK			
ITEM	UNIT	QUANTITY	
TRENCH BACKFILL	CY	129	
DUCTILE IRON WATER MAIN 12"	FOOT	117	
DUCTILE IRON WATER MAIN FITTINGS	POUND	600	
WATER MAIN REMOVAL, 12"	FOOT	122	
WATER SERVICE CONNECTION	EACH	1	
CONNECTION TO EXISTING WATER MAIN 12"	EACH	2	



QUANTITIES IN RIVER FOREST			
ITEM	UNIT	QUANTITY	
TRENCH BACKFILL	CY	80	
DUCTILE IRON WATER MAIN 6"	FOOT	128	
DUCTILE IRON WATER MAIN FITTINGS	POUND	228	
WATER MAIN REMOVAL, 6"	FOOT	77	
CONNECTION TO EXISTING WATER MAIN 6"	EACH	2	



FILE NAME = N:\101\North Ave CAD\DWG\DWG\101-102\101-102.dwg

CHRISTOPHER B. BURKE ENGINEERING LTD.
 1073 W. Higgins Road, Suite 500
 Roseville, Illinois 60018
 (630) 825-0500

USER NAME = vreach	DESIGNED - VMR	REVISED -
	DRAWN - PM	REVISED -
	CHECKED - JCS	REVISED -
	DATE - 12/05/2013	REVISED -

STATE OF ILLINOIS
 DEPARTMENT OF TRANSPORTATION

ILLINOIS ROUTE 64 (NORTH AVE) OVER THE DES PLAINES RIVER
 WATER MAIN RELOCATIONS
 HORIZ 1"=20'
 SCALE: VERT 1"=4'

F.A. RTE.	SECTION	COUNTY	TOTAL SHEETS	SHEET NO.
307	541Y-3-B	COOK	143	36a
CONTRACT NO. 60J11				
ILLINOIS FED. AID PROJECT				