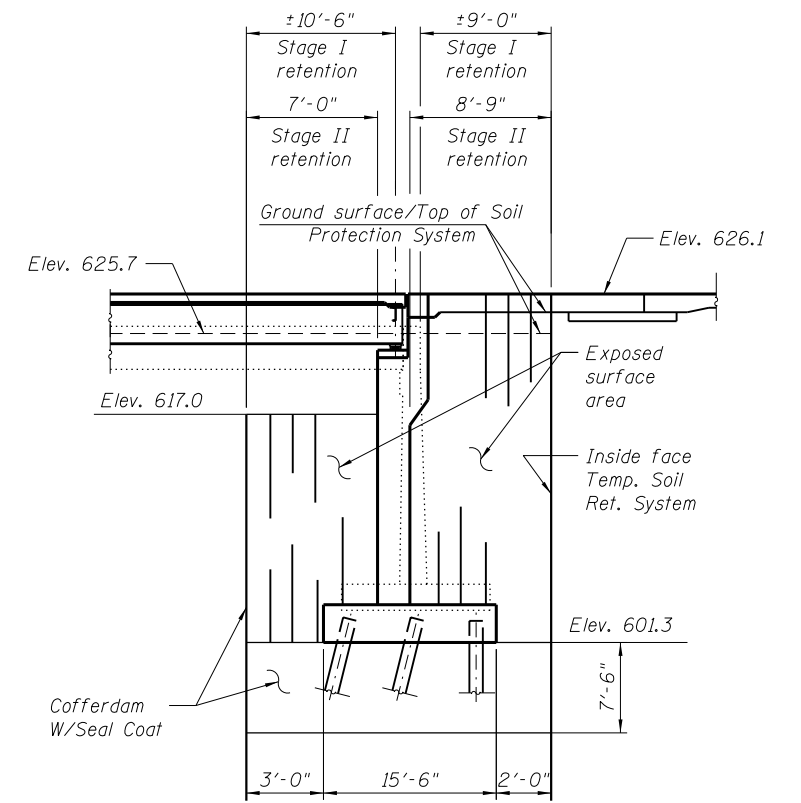
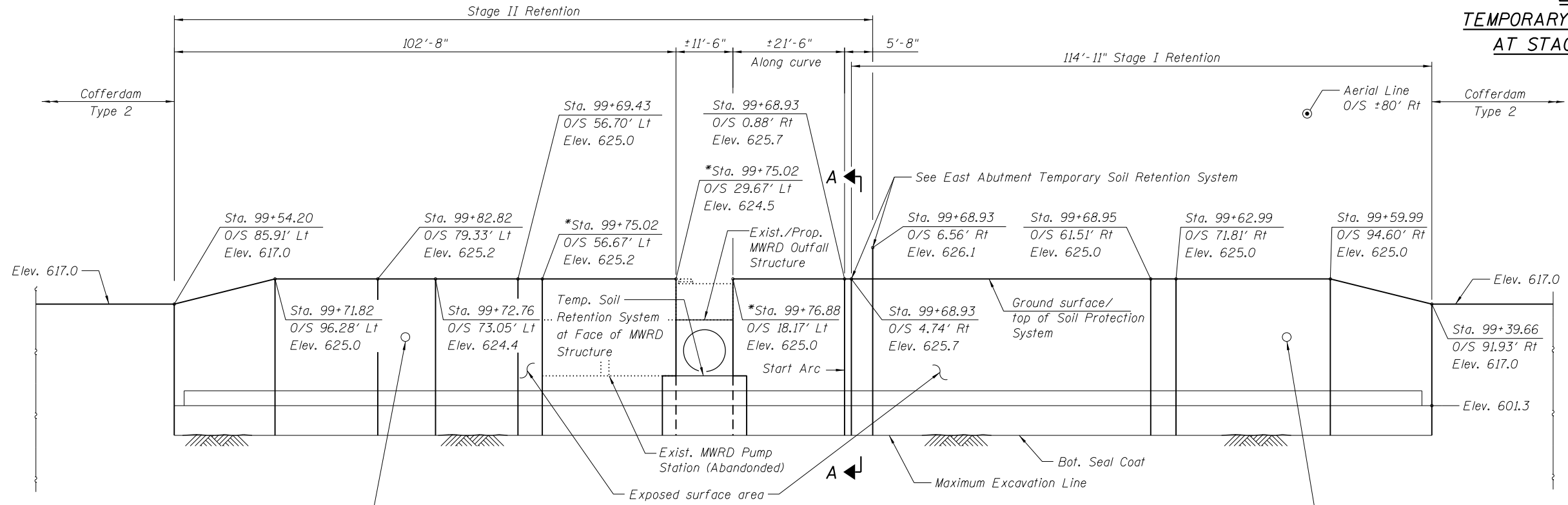


WEST ABUTMENT ** At Stage Const. Line
TEMPORARY SHEET PILING
 (NTS)



SECTION A-A
EAST ABUTMENT
TEMPORARY SOIL RETENTION SYSTEM
AT STAGE CONSTRUCTION LINE
 (NTS)



DEVELOPED - EAST ABUTMENT
TEMPORARY SOIL RETENTION SYSTEM
 (NTS)
 (Looking at Inside Face)
 (Sta. and O/S with respect to \bar{C} IL 64)

Notes:
 If the Contractor chooses to alter the temporary cantilevered sheet piling design requirements shown on the plans, a design submittal including plan details and calculations will be required for review and acceptance by the Engineer.
 The Contractor shall connect the first sheet to the existing abutment walls to ensure stability of sheets driven to the top of the existing footing. This connection shall be reviewed and accepted by the Engineer and included in the cost for Temporary Sheet Piling and in the cost for Temporary Soil Retention System.

BILL OF MATERIAL

Item	Unit	Total
Temporary Sheet Piling	Sq. Ft.	3570
Temporary Soil Retention System	Sq. Ft.	8800

FILE NAME = W:\191-130-100T-IL64-CADD-Sheets\Structure\160J11-ht-03a_TempSoilRetention.dgn

Bollinger, Lach & Associates, Inc.
 ITASCA, ILLINOIS

USER NAME =	DESIGNED - JMT	REVISED
	CHECKED - JJI	REVISED
PLOT SCALE =	DRAWN - GM	REVISED
PLOT DATE = 8/16/2013	CHECKED - JJI	REVISED

STATE OF ILLINOIS
DEPARTMENT OF TRANSPORTATION

TEMPORARY SOIL RETENTION
STRUCTURE NO. 016-3035
 SHEET NO. 5 OF 62 SHEETS

F.A.P. RTE. 307	SECTION 541Y-3-B	COUNTY COOK	TOTAL SHEETS 143	SHEET NO. 66
CONTRACT NO. 60J11				
ILLINOIS FED. AID PROJECT				