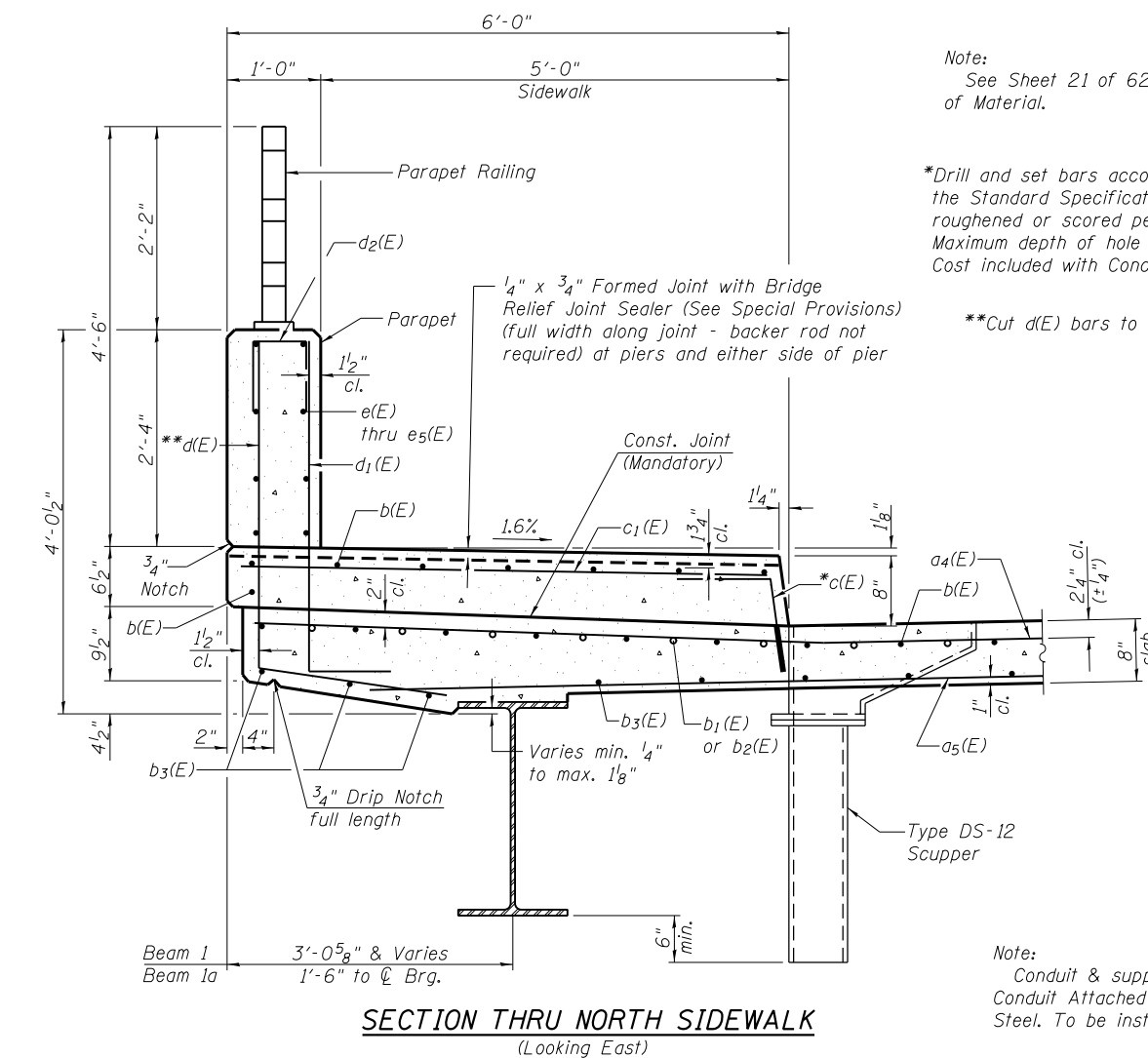
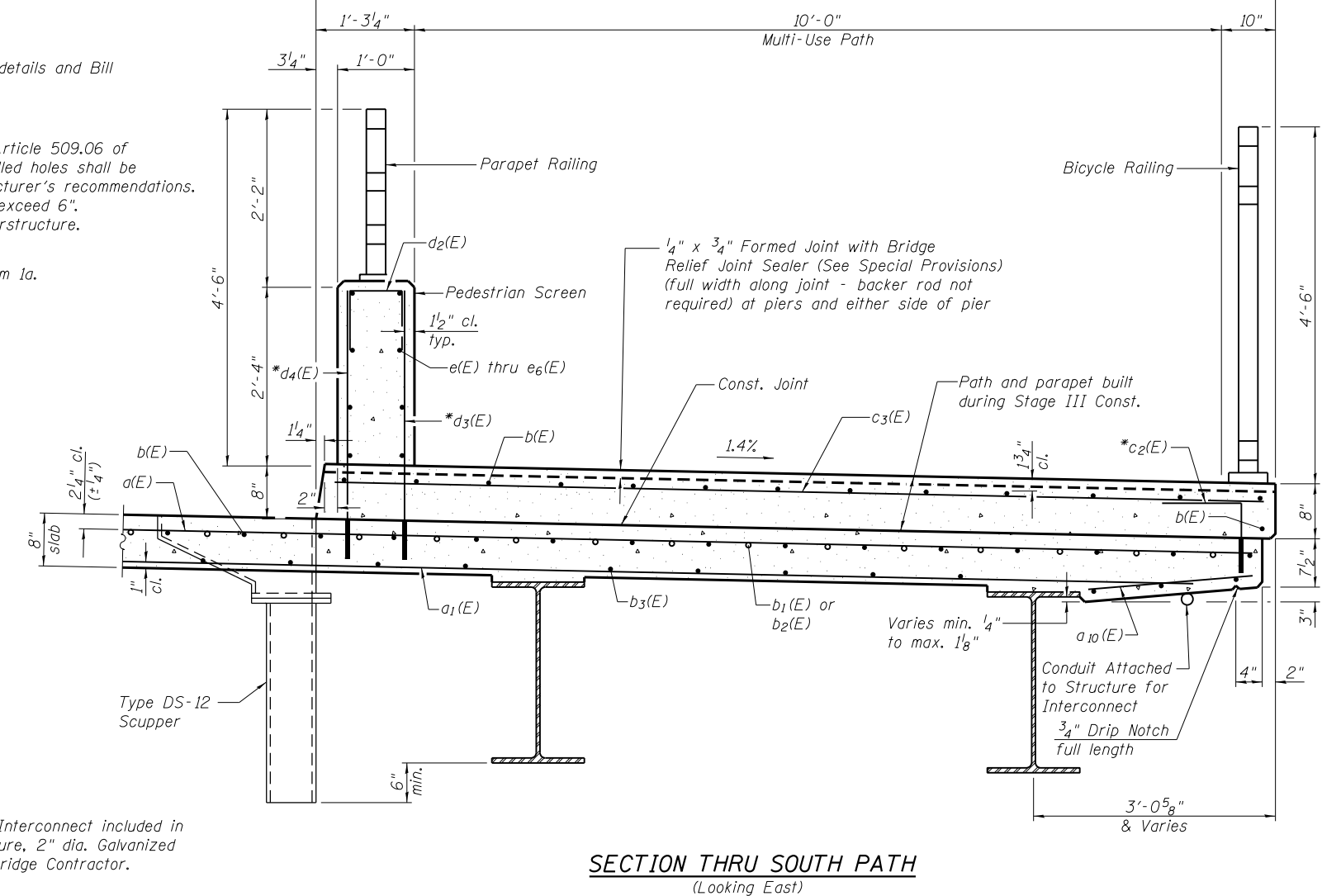


CROSS SECTION
(Looking East)



SECTION THRU NORTH SIDEWALK
(Looking East)



SECTION THRU SOUTH PATH
(Looking East)

Note:
See Sheet 21 of 62 for bar details and Bill of Material.

*Drill and set bars according to Article 509.06 of the Standard Specifications. Drilled holes shall be roughened or scored per manufacturer's recommendations. Maximum depth of hole shall not exceed 6". Cost included with Concrete Superstructure.

**Cut d(E) bars to fit at Beam 1a.

Note:
Conduit & supports for Interconnect included in Conduit Attached to Structure, 2" dia. Galvanized Steel. To be installed by Bridge Contractor.

FILE NAME = W:\191-130-100T-11641-CADD-Sheets\Structure\1166011-11-15-SupC-Struct.dgn