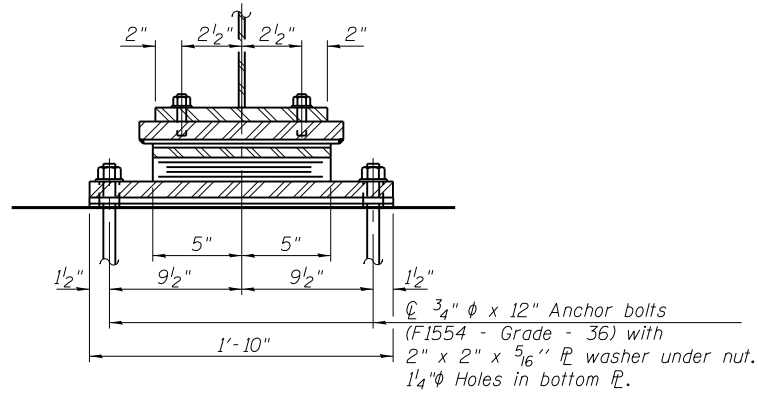


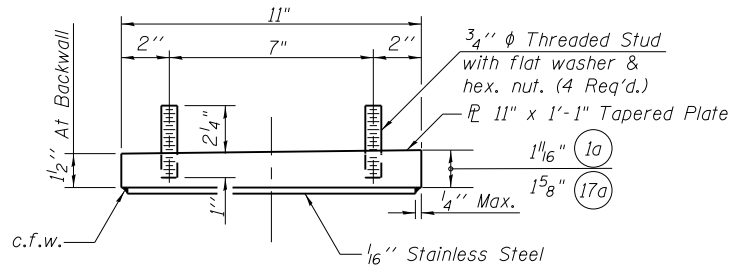
ELEVATION AT ABUT.



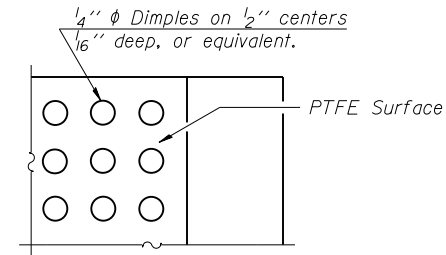
SECTION A-A

TYPE II ELASTOMERIC EXP. BRG.
(Beams 1a & 17a - East Abut.)

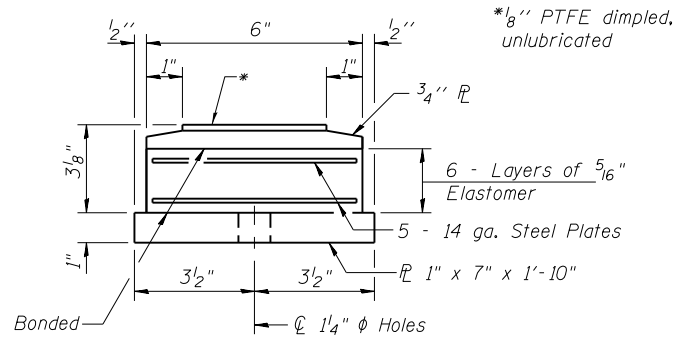
Note: Top bearing assembly not drawn skewed. See Plan-17a.



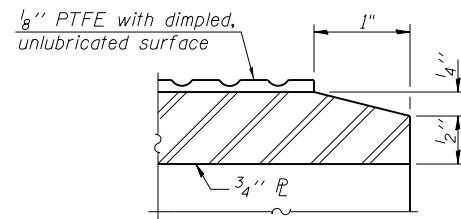
TOP BEARING ASSEMBLY



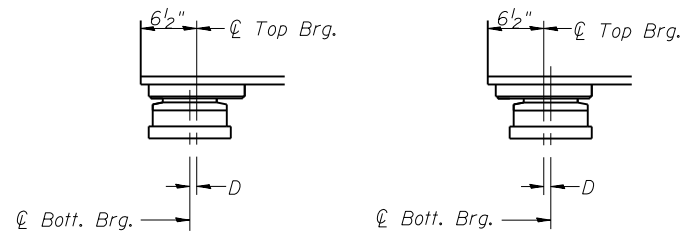
PLAN-PTFE SURFACE



BOTTOM BEARING ASSEMBLY



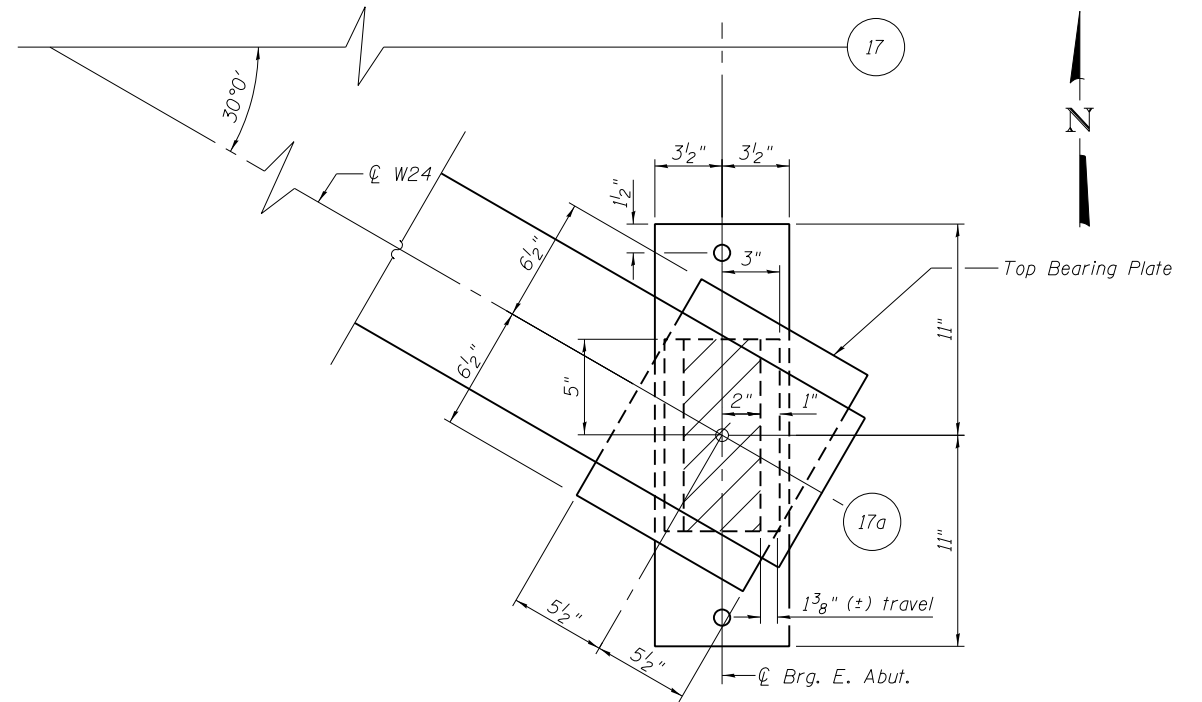
SECTION THRU PTFE



BELOW 50°F. ABOVE 50°F.
(Move bott. brg. away from fixed brg.) (Move bott. brg. toward fixed brg.)

SETTING ANCHOR BOLTS AT EXP. BRG.

$D = \frac{1}{8}$ " per each 100' of expansion for every 15° temp. change from the normal temp. of 50°F.



PLAN-17a

(1a - Similar)

Notes:

Anchor bolts shall be ASTM F1554 all-thread (or an Engineer-approved alternate material) of the grade(s) and diameter(s) specified. The corresponding specified grade of AASHTO M314 anchor bolts may be used in lieu of ASTM F1554.

Anchor bolts for Type II bearings shall be placed in holes drilled in the concrete through holes in the bottom bearing plate after members are in place.

Drilled and set anchor bolts shall be installed according to Article 521.06 of the Standard Specifications.

Steel members required for the elastomeric bearing assembly shall be included in the cost of Elastomeric Bearing Assembly, Type II.

The 1/8" PTFE sheet shall be bonded directly to the top steel plate with a two-component, medium viscosity epoxy resin, conforming to the requirements of the Federal Specification MMM-A-134, Type I. The bond agent shall be applied on the full area of the contact surfaces.

Bonding of 1/8" PTFE sheet during vulcanizing process will be permitted provided the process and method of adjusting assembly height is approved by the Engineer.

The structural steel plates of the Bearing Assembly shall conform to the requirements of AASHTO M 270 Grade 50.

Two 1/8 in. adjusting shims shall be provided for each bearing in addition to all other plates or shims and placed as shown on bearing details.

BILL OF MATERIAL

Item	Unit	Total
Elastomeric Bearing Assembly Type II	Each	2
Anchor Bolts, 3/4"	Each	4

FILE NAME = W:\191-130-1001-11641-CADD-Sheets\Structure\1166011-ht-23a-AbutBearing.dgn

Bollinger, Lach & Associates, Inc.
ITASCA, ILLINOIS

USER NAME =	DESIGNED - JJI	REVISED
	CHECKED - JMT	REVISED
PLOT SCALE =	DRAWN - GM	REVISED
PLOT DATE = 8/15/2013	CHECKED - JMT	REVISED

STATE OF ILLINOIS
DEPARTMENT OF TRANSPORTATION

BEAM 1A & 17A EAST ABUTMENT BEARING DETAILS
STRUCTURE NO. 016-3035

F.A.P. RTE. 307	SECTION 541Y-3-B	COUNTY COOK	TOTAL SHEETS 143	SHEET NO. 96
CONTRACT NO. 60J11				
ILLINOIS FED. AID PROJECT				

SHEET NO. 35 OF 62 SHEETS