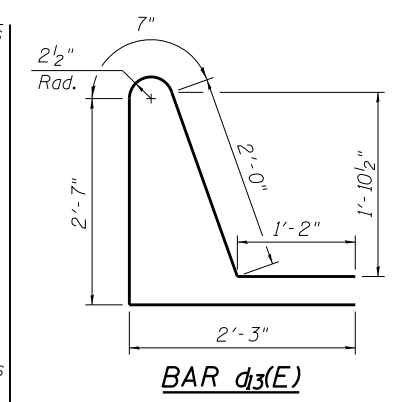
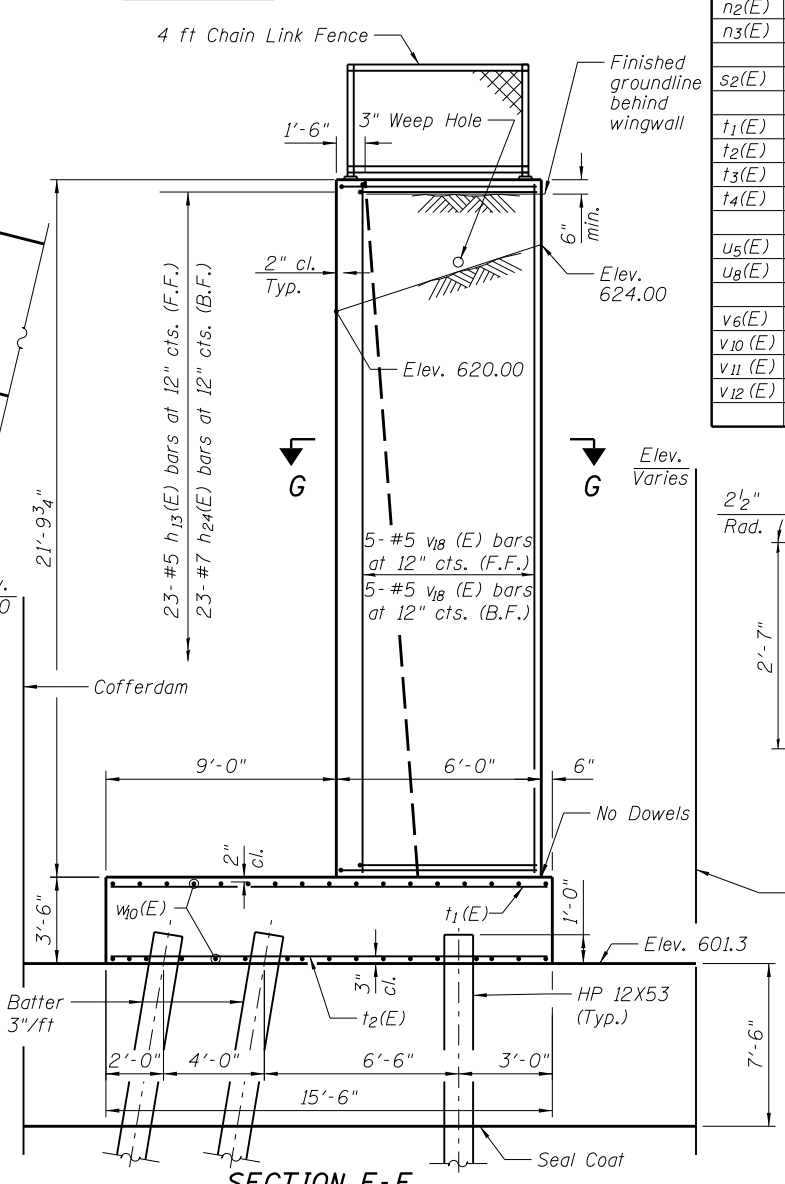
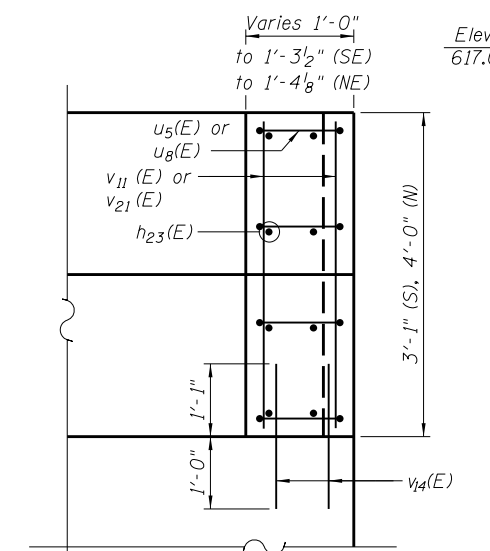
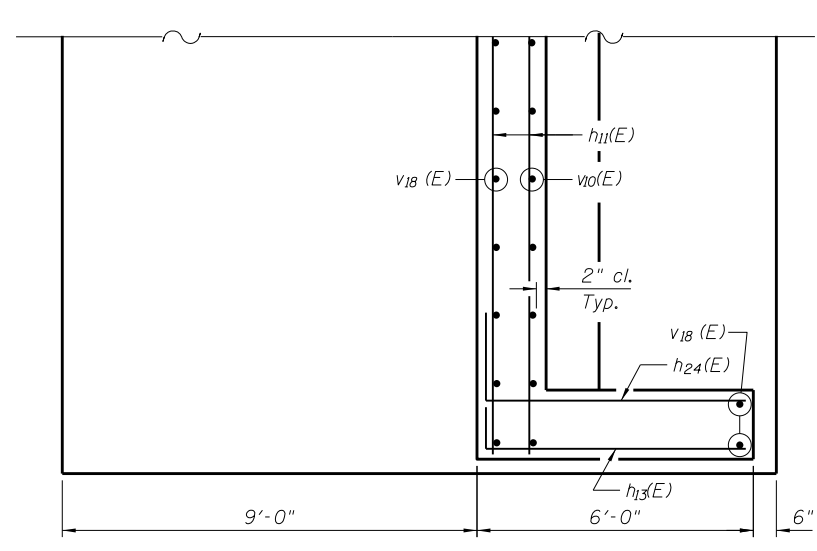
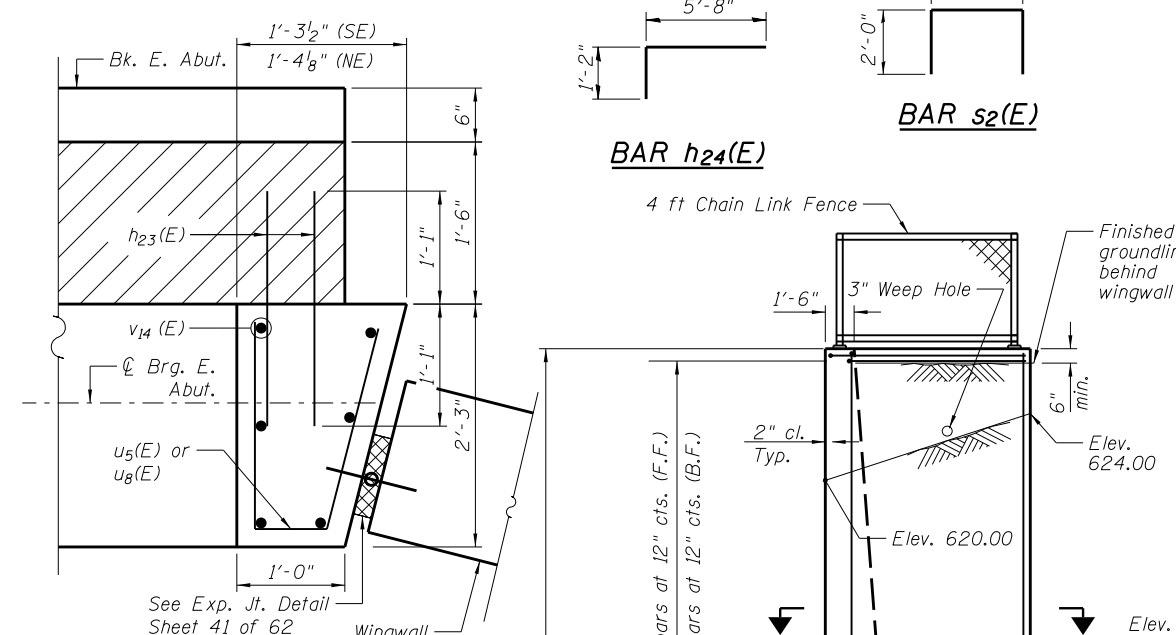
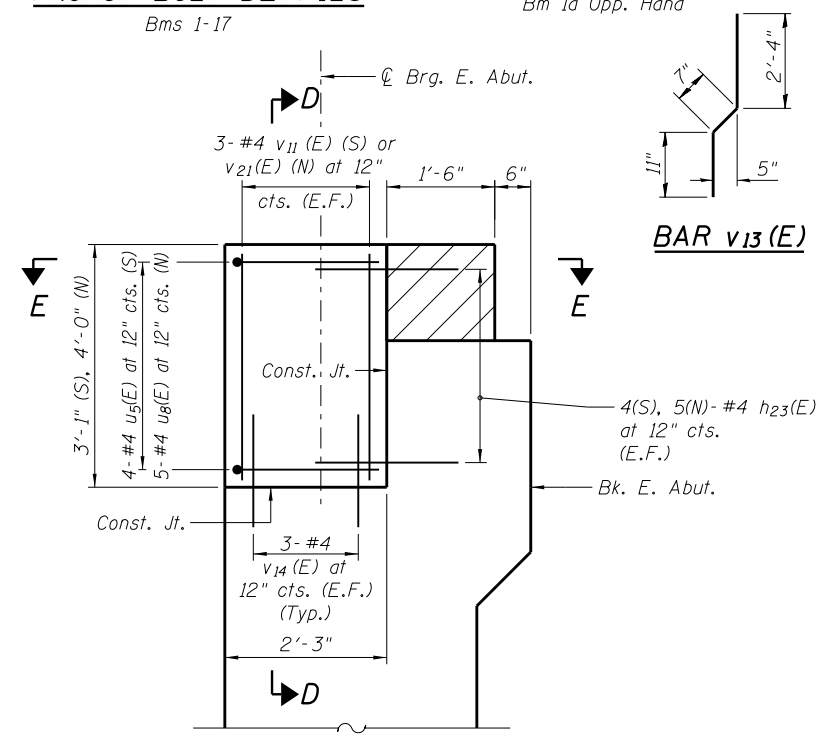
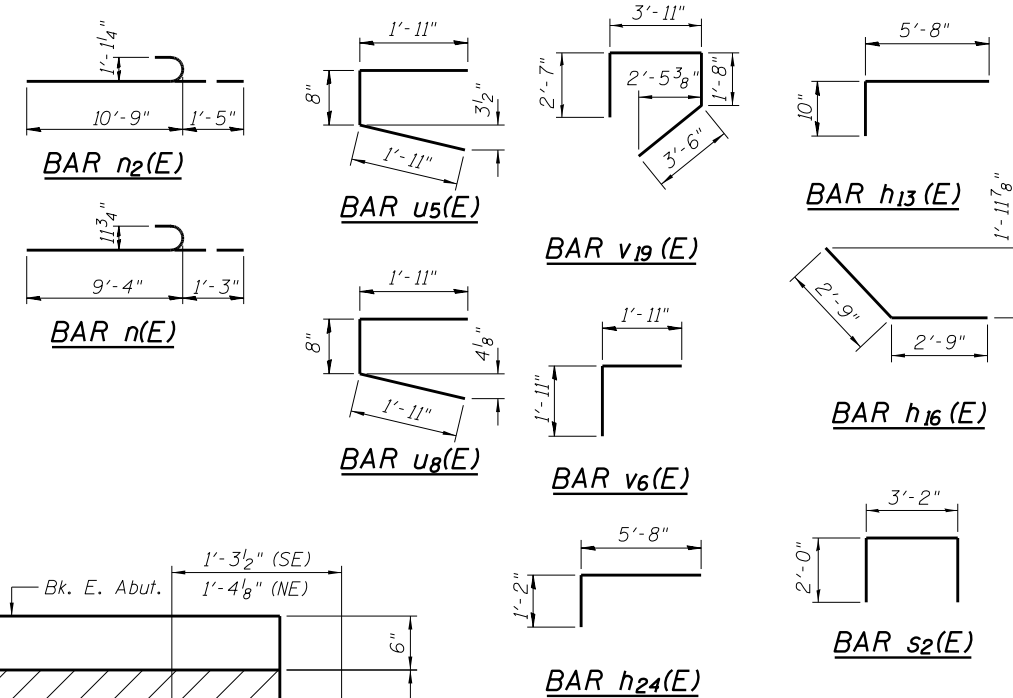
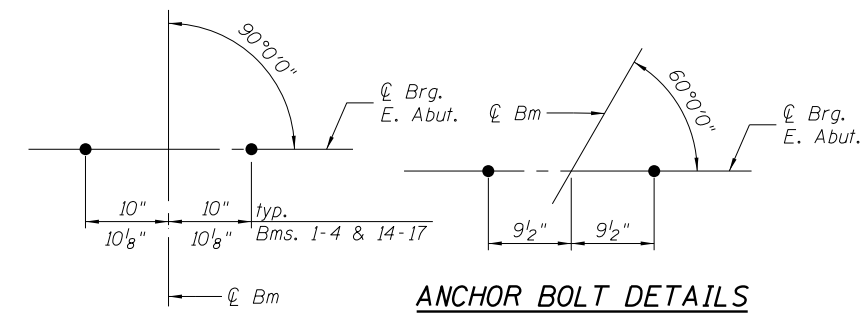


**EAST ABUTMENT
BILL OF MATERIAL**

| Bar | No. | Size | Length | Shape |
|---------------------|-----|------|---------|-------|
| b ₂₀ (E) | 32 | #5 | 4'-4" | — |
| b ₂₁ (E) | 16 | #5 | 13'-0" | — |
| d ₁₃ (E) | 3 | #5 | 8'-7" | ⌒ |
| h ₅ (E) | 98 | #5 | 29'-4" | — |
| h ₉ (E) | 4 | #5 | 30'-10" | — |
| h ₁₀ (E) | 4 | #5 | 12'-3" | — |
| h ₁₁ (E) | 46 | #5 | 28'-8" | — |
| h ₁₂ (E) | 44 | #5 | 27'-1" | — |
| h ₁₃ (E) | 23 | #5 | 6'-6" | ⌒ |
| h ₁₄ (E) | 44 | #5 | 14'-8" | — |
| h ₁₅ (E) | 98 | #5 | 31'-4" | — |
| h ₁₆ (E) | 44 | #5 | 5'-6" | — |
| h ₁₇ (E) | 4 | #5 | 5'-10" | — |
| h ₁₈ (E) | 10 | #6 | 31'-8" | — |
| h ₁₉ (E) | 4 | #5 | 37'-3" | — |
| h ₂₀ (E) | 10 | #6 | 29'-8" | — |
| h ₂₃ (E) | 18 | #4 | 2'-2" | — |
| h ₂₄ (E) | 23 | #7 | 6'-10" | ⌒ |
| n(E) | 158 | #9 | 10'-7" | — |
| n ₁ (E) | 211 | #5 | 7'-1" | — |
| n ₂ (E) | 93 | #10 | 12'-2" | — |
| n ₃ (E) | 40 | #5 | 6'-0" | — |
| s ₂ (E) | 92 | #5 | 7'-2" | ⌒ |
| t ₁ (E) | 203 | #7 | 15'-2" | — |
| t ₂ (E) | 203 | #9 | 15'-2" | — |
| t ₃ (E) | 56 | #9 | 15'-5" | — |
| t ₄ (E) | 56 | #8 | 15'-5" | — |
| u ₅ (E) | 4 | #4 | 4'-6" | — |
| u ₈ (E) | 5 | #4 | 4'-6" | — |
| v ₆ (E) | 120 | #5 | 3'-10" | ⌒ |
| v ₁₀ (E) | 40 | #7 | 18'-7" | — |
| v ₁₁ (E) | 6 | #4 | 2'-9" | — |
| v ₁₂ (E) | 240 | #5 | 2'-9" | — |

| Bar | No. | Size | Length | Shape |
|--------------------------------------------|-----|---------|---------|-------|
| v ₁₃ (E) | 120 | #5 | 3'-10" | ⌒ |
| v ₁₄ (E) | 12 | #4 | 2'-1" | — |
| v ₁₅ (E) | 53 | #7 | 18'-4" | — |
| v ₁₆ (E) | 158 | #7 | 17'-6" | — |
| v ₁₇ (E) | 53 | #5 | 20'-10" | — |
| v ₁₈ (E) | 50 | #5 | 21'-5" | — |
| v ₁₉ (E) | 158 | #5 | 11'-8" | ⌒ |
| v ₂₀ (E) | 158 | #5 | 18'-1" | — |
| v ₂₁ (E) | 6 | #4 | 3'-8" | — |
| w ₁₀ (E) | 34 | #5 | 30'-8" | — |
| w ₁₁ (E) | 34 | #5 | 17'-0" | — |
| w ₁₂ (E) | 68 | #5 | 33'-2" | — |
| w ₁₃ (E) | 34 | #5 | 29'-11" | — |
| w ₁₄ (E) | 68 | #5 | 29'-6" | — |
| Cofferdam Excavation | | Cu. Yd. | 3800 | |
| Concrete Structures | | Cu. Yd. | 792.4 | |
| Reinforcement Bars, Epoxy Coated | | Pound | 72,220 | |
| Furnishing Steel Piles HP 12X53 | | Foot | 2955 | |
| Driving Piles | | Foot | 2955 | |
| Test Pile Steel HP 12X53 | | Each | 2 | |
| Concrete Sealer | | Sq. Ft. | 2555 | |
| Cofferdam (Type 2) (Location-3) | | Each | 1 | |
| Pile Shoes | | Each | 91 | |
| Seal Coat Concrete | | Cu. Yd. | 1225.5 | |
| Geocomposite Wall Drain | | Sq. Yd. | 350 | |
| Chain Link Fence, 4' Attached to Structure | | Foot | 80 | |
| Storm Sewers, Class A, Type 3, 96" | | Foot | 16 | |
| Protective Coat | | Sq. Yd. | 198 | |
| Permanent Casing | | Foot | 28 | |
| Controlled Low-Strength Material | | Cu. Yd. | 19.0 | |
| Granular Backfill for Structures | | Cu. Yd. | 1720 | |



Notes:

- For details of Bar Splicers, see sheet 53 of 62.
- For details of piles, see sheet 52 of 62.
- Hatched area to be poured after Superstructure false work has been removed. Quantity of concrete included with Concrete Superstructure.
- Pour steps monolithically with cap.
- B.F. Denotes Back Face.
- E.F. Denotes Each Face.
- F.F. Denotes Front Face.
- Work sheets 40 thru 45 of 62 together.
- Excavation for East Abutment and Wingwalls included with Cofferdam Excavation.
- See Sheet 44 of 62 for Weep Hole Details.
- Apply Protective Coat to exposed areas of wingwalls.

FILE NAME = \$FILEL\$

Bollinger, Lach & Associates, Inc.
ITASCA, ILLINOIS

| | | |
|----------------------|----------------|---------|
| USER NAME = | DESIGNED - JMT | REVISED |
| PLOT SCALE = | CHECKED - JJI | REVISED |
| PLOT DATE = \$DATE\$ | DRAWN - GM | REVISED |
| | CHECKED - JJI | REVISED |

**STATE OF ILLINOIS
DEPARTMENT OF TRANSPORTATION**

**EAST ABUTMET DETAILS II
STRUCTURE NO. 016-3035**
SHEET NO. 45 OF 62 SHEETS

| | | | | |
|---------------------------|------------------|-------------|------------------|---------------|
| F.A.P. RTE. 307 | SECTION 541Y-3-B | COUNTY COOK | TOTAL SHEETS 143 | SHEET NO. 106 |
| CONTRACT NO. 60J11 | | | | |
| ILLINOIS FED. AID PROJECT | | | | |