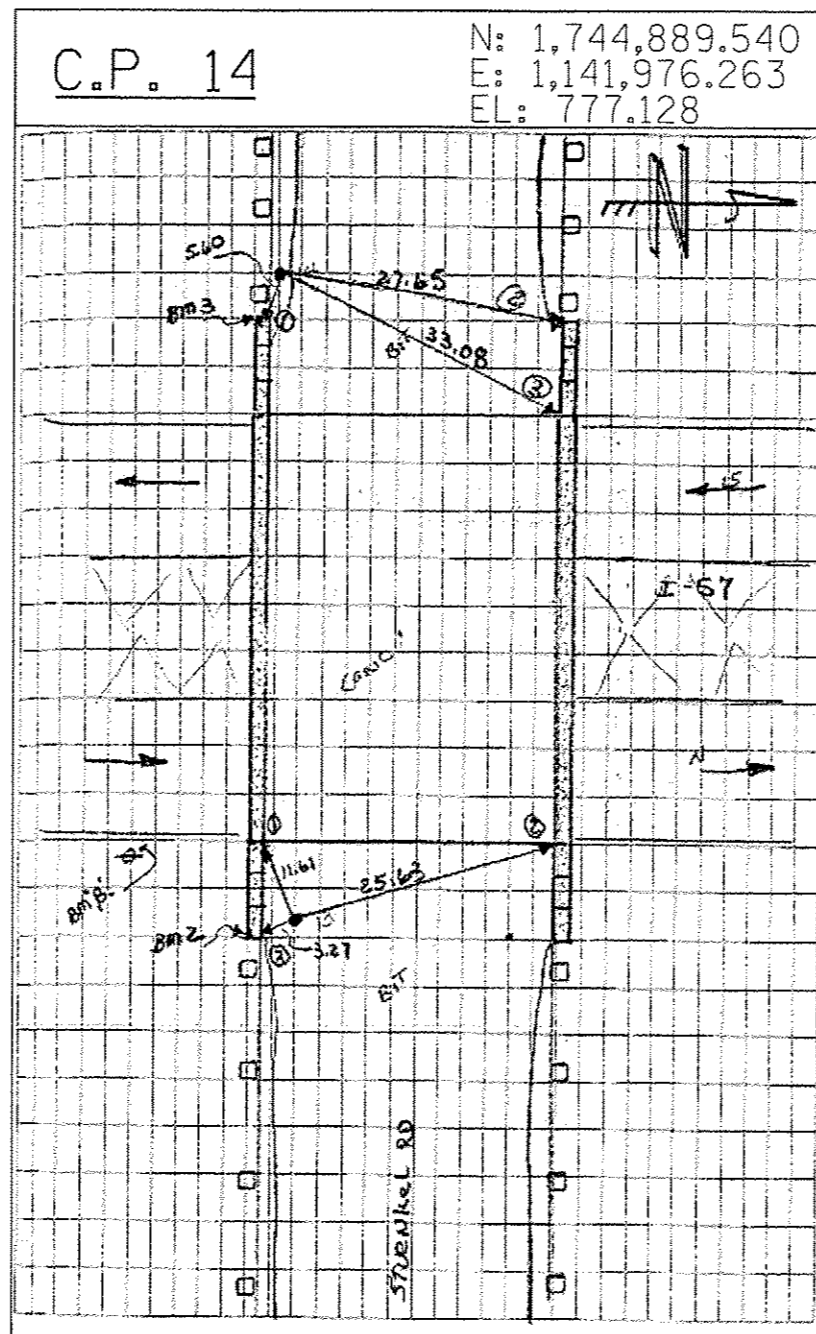


CPT 12 IR W/ CENTER PUNCH

TIE 1 22.45 E. END OF +/- 12" CMP ON N. SIDE STUENKEL RD

TIE 2 82.30 N. FACE OF PP ON S. SIDE STUENKEL RD 4TH POLE E. OF I-57

+/- 24' N. OF EDGE OF GRAVEL RD

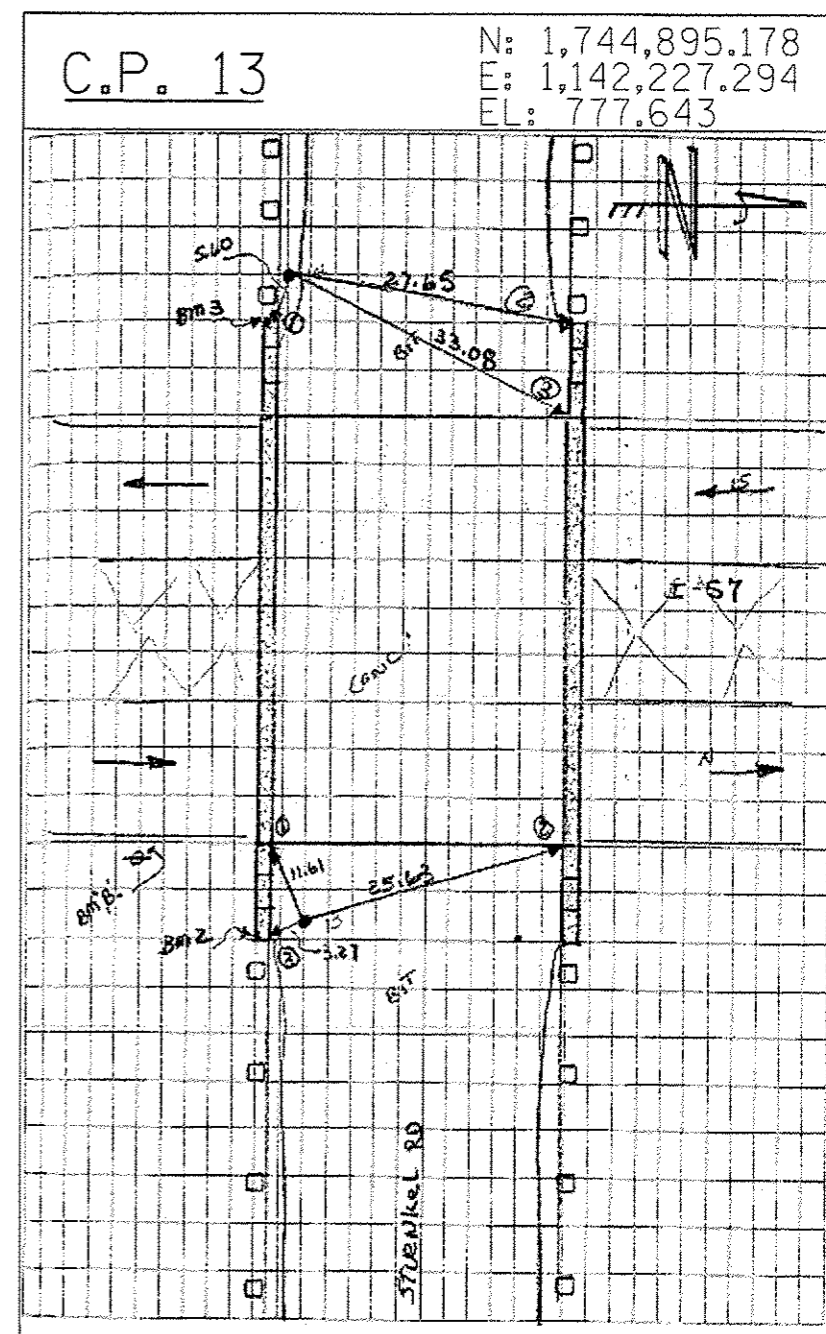


CPT 14 FOUND IRC

TIE 1 5.60 NWX OF RET WALL ON S. SIDE STUENKEL RD (E. END OF BRIDGE OVER I-57)

TIE 2 27.65 NWX OF RET WALL ON N. SIDE STUENKEL RD. (E. END OF BRIDGE OVER I-57)

TIE 3 33.08 NWX OF BRIDGE DECK



CPT 13 PKN IN BIT PAV

TIE 1 11.61 SEX OF BRIDGE DECK

TIE 2 25.63 NEX OF BRIDGE DECK

TIE 3 3.27 NEX OF RET WALL ON S. SIDE STUENKEL RD (W. END OF BRIDGE OVER I-57)

TYLIN INTERNATIONAL	USER NAME	DESIGNED	BES	REVISED		STATE OF ILLINOIS DEPARTMENT OF TRANSPORTATION	STUENKEL ROAD AT I-57 RIDGELAND AVENUE TO CENTRAL AVENUE		F.A.I. RTE.	SECTION	COUNTY	TOTAL SHEETS	SHEET NO.	
	PLOT SCALE	DRAWN	BES	REVISED			SCALE: N.T.S.	SHEET 2 OF 5 SHEETS	STA.	57	99-1HB-R1	WILL	679	32
	PLOT DATE	CHECKED	JPM	REVISED			TO STA.							
		DATE	05/10/2013	REVISED									CONTRACT NO. 60L69	
ILLINOIS FED. AID PROJECT														