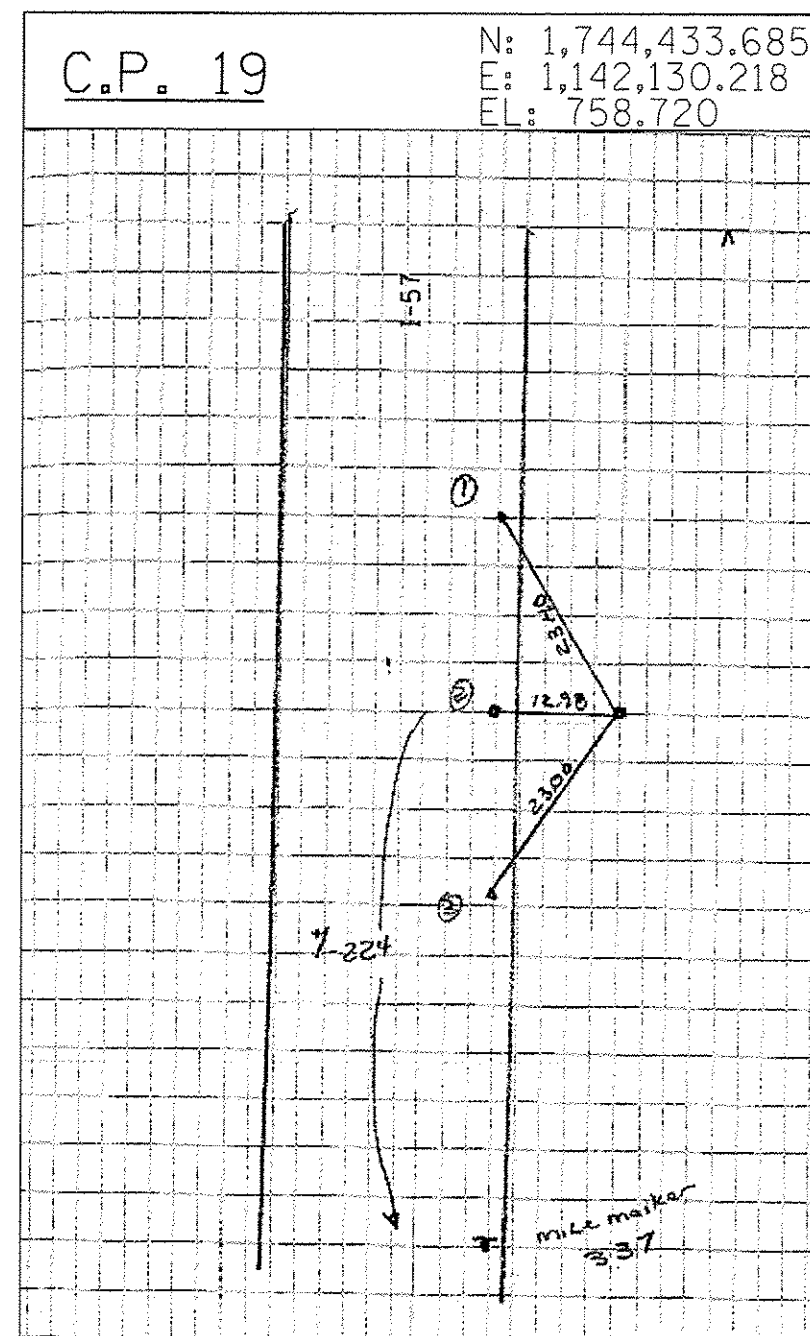


CPT 21 IRC +/- 275 S. OF MILE MARKER 337
ON E. SIDE N. BOUND LANES 1-57

TIE 1 21.51 PK NAIL N. ON EDGE OF PAV.
N. BOUND LANES 1-57

TIE 2 6.75 W. PK NAIL N. EDGE OF PAV.
N. BOUND LANES 1-57

TIE 3 21.28 PK NAIL, N. ON EDGE OF
PAV. N. BOUND LANES 1-57



CPT 19 IR W/ CENTER PUNCH +/- 224 N OF MILE MARKER
337

TIE 1 2340 PK

TIE 2 12.98 PK

TIE 3 23.00 PK

TYLIN INTERNATIONAL

USER NAME
PLAT SCALE
PLOT DATE

DESIGNED - BES
DRAWN - BES
CHECKED - JPM
DATE - 05/10/2013

REVISED - 06/21/2013
REVISED - 10/18/2013
REVISED
REVISED

STATE OF ILLINOIS
DEPARTMENT OF TRANSPORTATION

STUENKEL ROAD AT I-57 RIDGELAND AVENUE TO CENTRAL AVENUE
SURVEY TIES FOR CONTROL POINTS

SCALE: N.T.S. SHEET 5 OF 5 SHEETS STA. TO STA.

F.A.I. RTE. 57	SECTION 99-IHB-RI	COUNTY WILL	TOTAL SHEETS 679	SHEET NO. 35
CONTRACT NO. 60L69				
ILLINOIS FED. AID PROJECT				