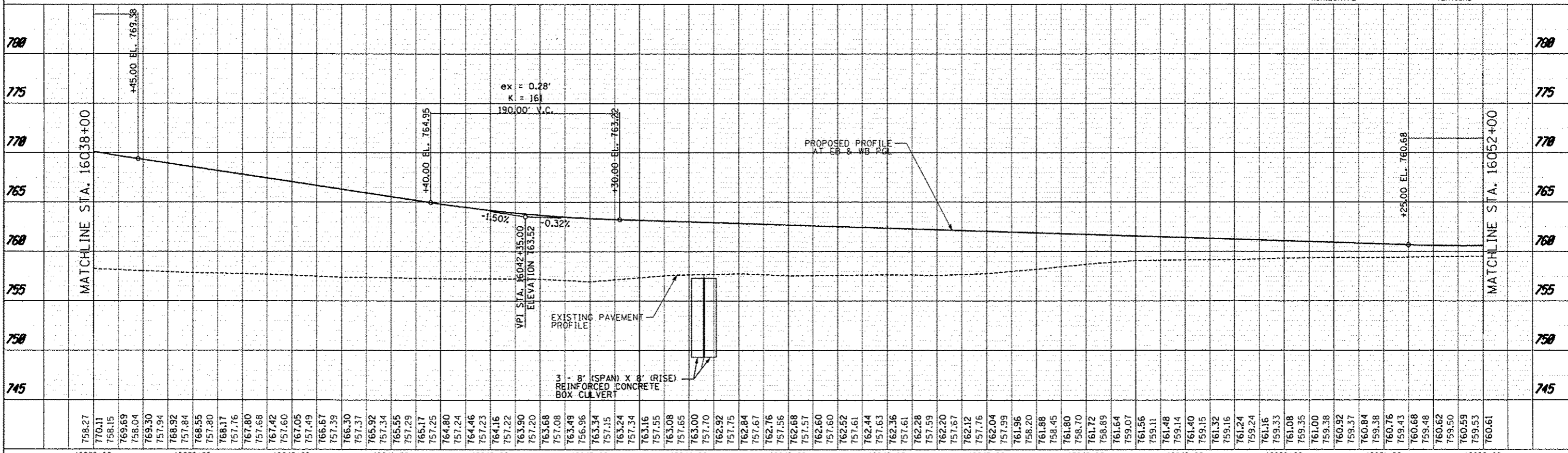
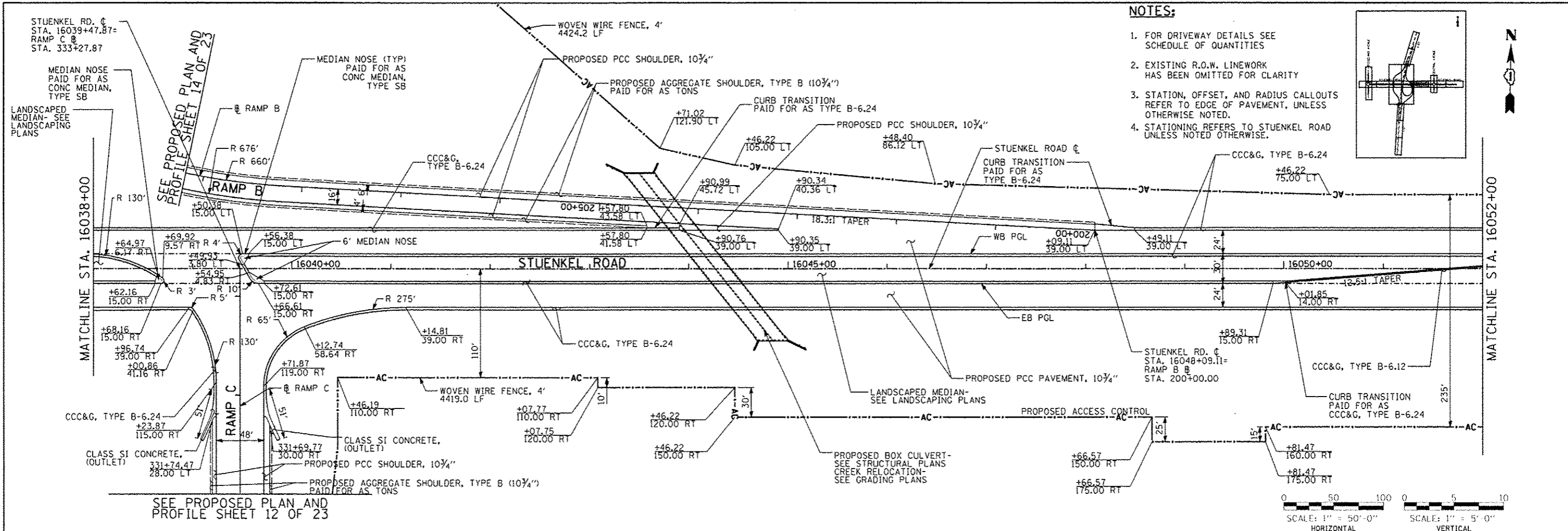


DATE	
BY	
REVISED	
REVISION	
NO.	
DATE	
BY	
REVISED	
REVISION	
NO.	
DATE	
BY	
REVISED	
REVISION	
NO.	

DATE	
BY	
REVISED	
REVISION	
NO.	
DATE	
BY	
REVISED	
REVISION	
NO.	
DATE	
BY	
REVISED	
REVISION	
NO.	



TYLIN INTERNATIONAL USER NAME: _____ PROJECT: _____ PROJECT DATE: _____	DESIGNED - JTP DRAWN - JTP CHECKED - JPM DATE - 05/10/2013	REVISED - 06/21/2013 REVISED - 10/18/2013 REVISED - _____ REVISED - _____	STATE OF ILLINOIS DEPARTMENT OF TRANSPORTATION	STUENKEL ROAD AT I-57 RIDGELAND AVENUE TO CENTRAL AVENUE STUENKEL ROAD PROPOSED PLAN AND PROFILE	F.A.I. R.T.E. 57 SECTION 99-1HB-RI COUNTY WILL CONTRACT NO. 60L69	TOTAL SHEETS 76 SHEET NO. 76 CONTRACT NO. 60L69 ILLINOIS FED. AID PROJECT
--	---	--	---	---	--	--

SCALE: 1" = 50' HORIZONTAL, 1" = 5' VERTICAL

STA. 16038+00 TO STA. 16052+00