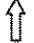


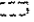

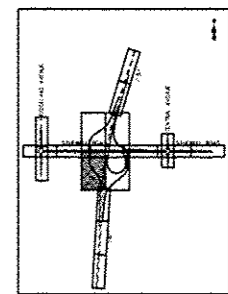
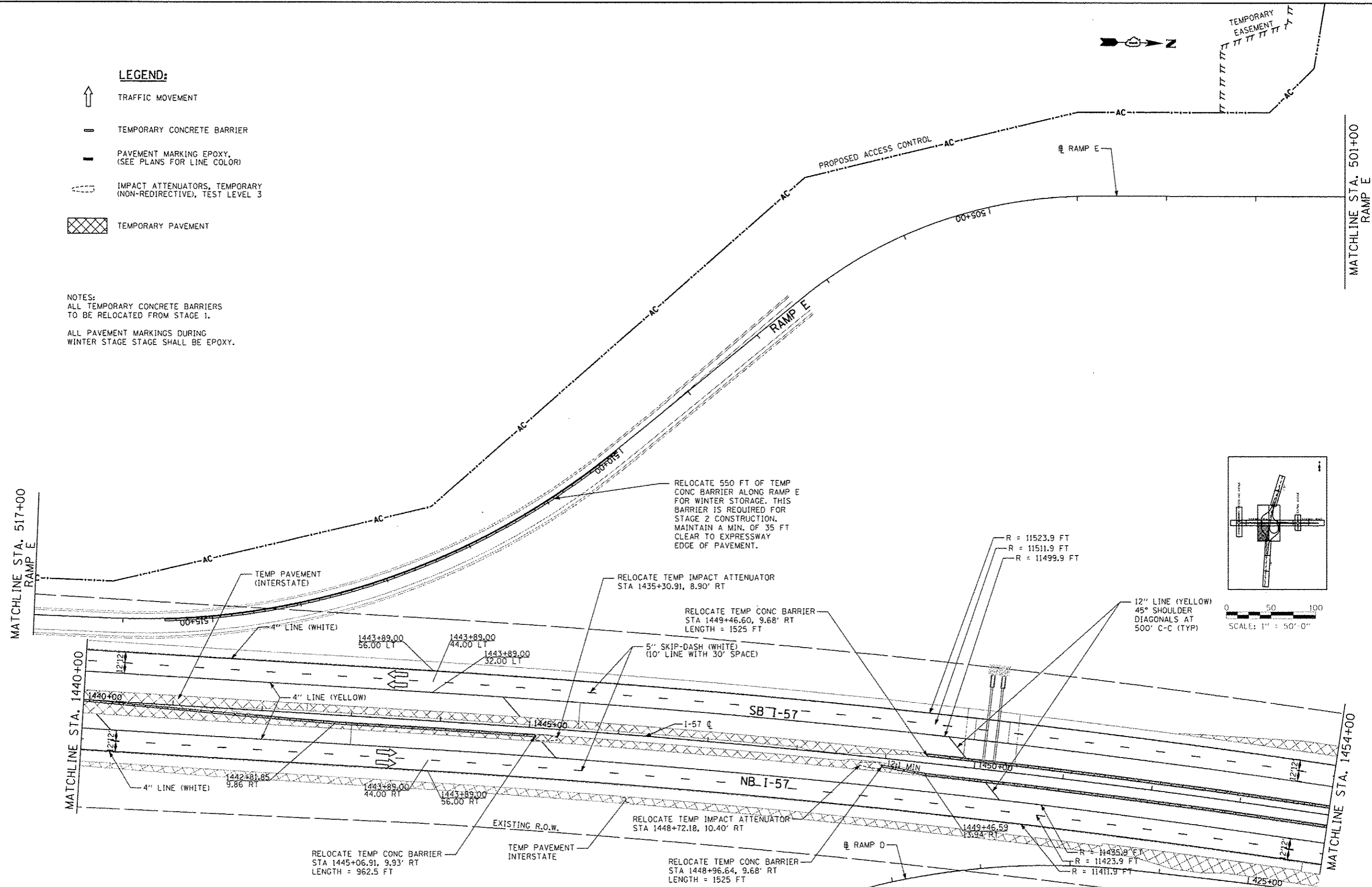


LEGEND:

-  TRAFFIC MOVEMENT
-  TEMPORARY CONCRETE BARRIER
-  PAVEMENT MARKING EPOXY, (SEE PLANS FOR LINE COLOR)
-  IMPACT ATTENUATORS, TEMPORARY (NON-REDIRECTIVE), TEST LEVEL 3
-  TEMPORARY PAVEMENT

NOTES:
 ALL TEMPORARY CONCRETE BARRIERS TO BE RELOCATED FROM STAGE 1.
 ALL PAVEMENT MARKINGS DURING WINTER STAGE SHALL BE EPOXY.



SCALE: 1" = 50'-0"

TYLIN INTERNATIONAL

USER NAME	DESIGNED - JTP	REVISED - 10/18/2013
PROJECT	DRAWN - JTP	REVISED -
PLD DATE	CHECKED - JPM	REVISED -
	DATE - 05/10/2013	REVISED -

STATE OF ILLINOIS
 DEPARTMENT OF TRANSPORTATION

STUENKEL ROAD AT I-57 RIDGELAND AVENUE TO CENTRAL AVENUE
 MAINTENANCE OF TRAFFIC PLAN - I-57 WINTER STAGE

F.A.I. RTE. 57	SECTION 99-1HB-R1	COUNTY WILL	TOTAL SHEETS 679	SHEET NO. 140A
SCALE: 1" = 50'			CONTRACT NO. 60L69	
SHEET 3 OF 6 SHEETS			STA. 1440+00 TO STA. 1454+00	

P:\60261201-57-0 Stuenkel Road\NC 3\Interchange\NC3 Stuenkel MDT Winter 511 3.dwg

4/25/2013 4:23:00 PM