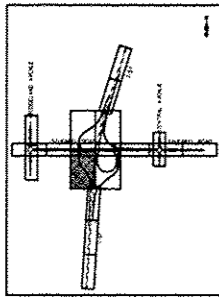


**NOTES:**

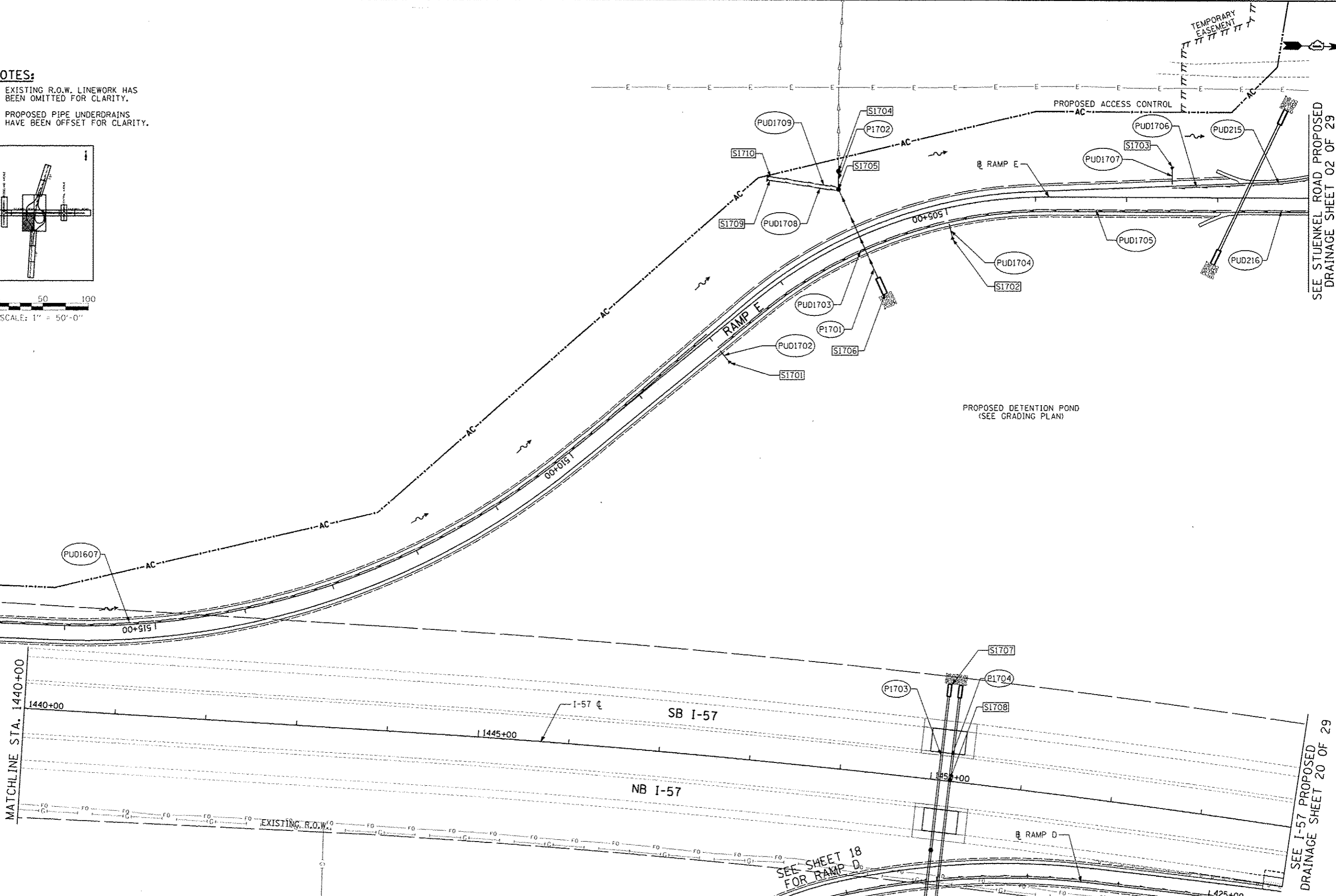
- EXISTING R.O.W. LINEWORK HAS BEEN OMITTED FOR CLARITY.
- PROPOSED PIPE UNDERDRAINS HAVE BEEN OFFSET FOR CLARITY.



0 50 100  
SCALE: 1" = 50'-0"

MATCHLINE STA. 517+00  
RAMP E

MATCHLINE STA. 1440+00



SEE STUENKEL ROAD PROPOSED DRAINAGE SHEET 02 OF 29

SEE I-57 PROPOSED DRAINAGE SHEET 20 OF 29

SEE SHEET 18 FOR RAMP D

TYLIN INTERNATIONAL	USER NAME	DESIGNED	PP	REVISED	STATE OF ILLINOIS DEPARTMENT OF TRANSPORTATION	STUENKEL ROAD AT I-57 RIDGELAND AVENUE TO CENTRAL AVENUE		F.A.I. RTE.	SECTION	COUNTY	TOTAL SHEETS	SHEET NO.
	PROJECT	DRAWN	PP	REVISED		57	99-1HB-R1	WILL	679	201		
	DATE	CHECKED	JPM	REVISED		SCALE: 1" = 50' SHEET 17 OF 29 SHEETS STA. 517+00 TO STA. 501+00		CONTRACT NO. 60L69		ILLINOIS FED. AID PROJECT		
	05/10/2013	DATE	05/10/2013	REVISED								