

**FRONT ELEVATION**

**SIDE ELEVATION**

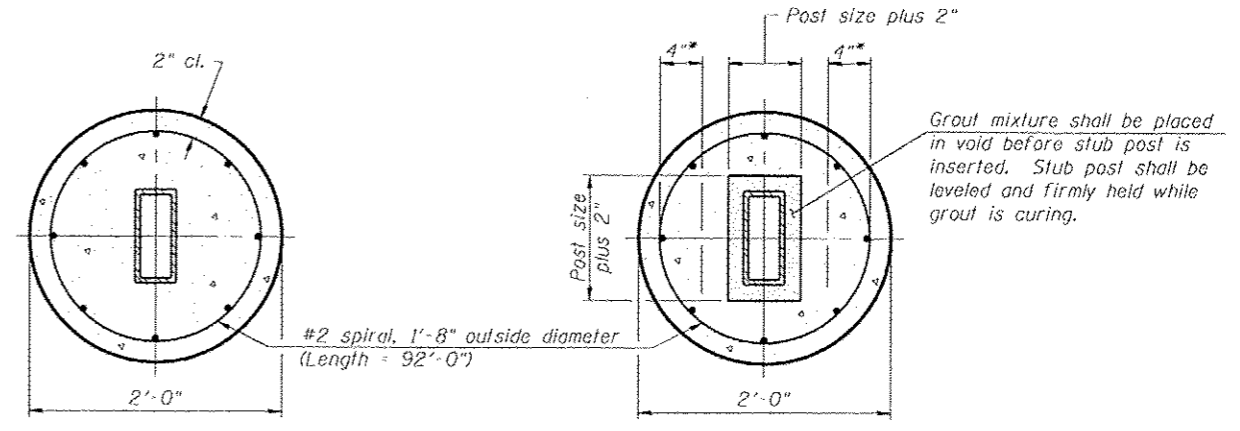
**MAIN POST & STUB POST**

Remove all galvanizing runs or beads in washer contact areas., typ.

High Strength Bolt with hex nut and three washers., typ.

W = tube wall thickness plus 1/16"

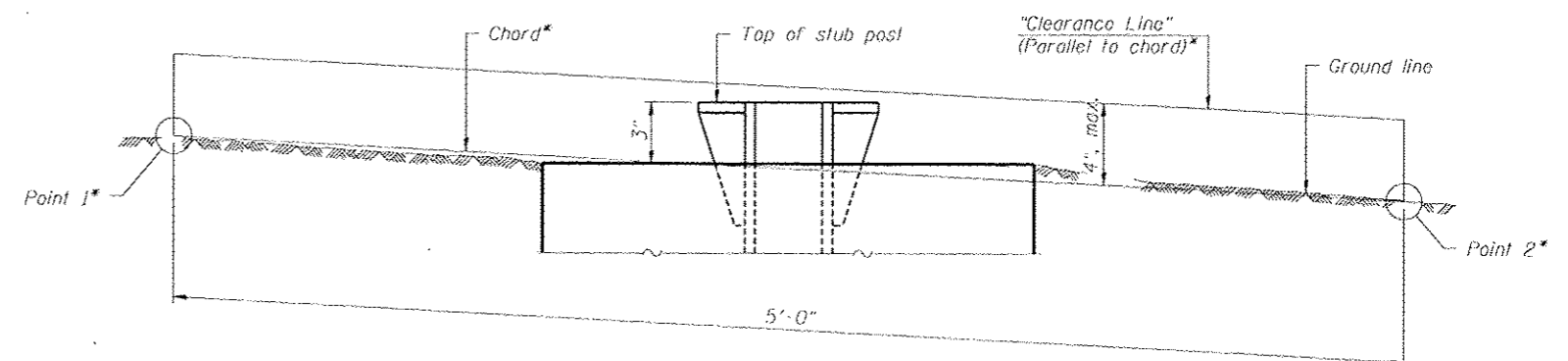
3/4" drain notch, both sides, typ.



**SECTION A-A (CAST-IN-PLACE)**

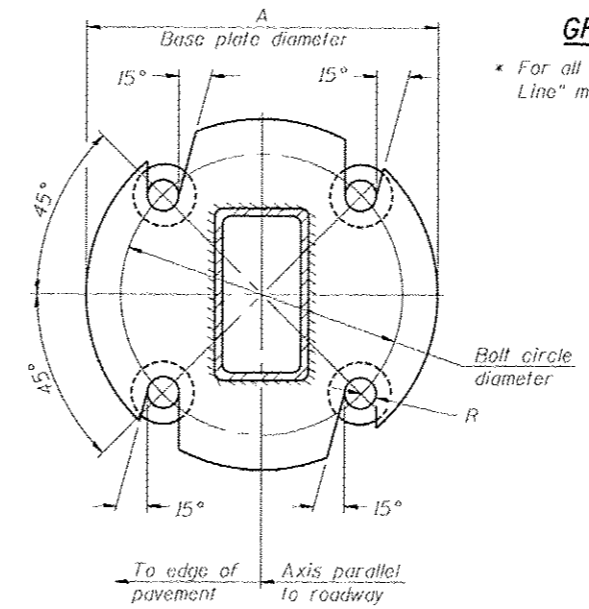
**SECTION A-A (PRECAST)**

\* Hot dip galvanized lifting loops or inserts may be placed in precast foundation inside the spiral reinforcement but not within 6" of the long axis of the post. Inserts must be adequate for safely lifting a total of 3,000 pounds and must not interfere with installation of the stub post or proper functioning of the slip base.

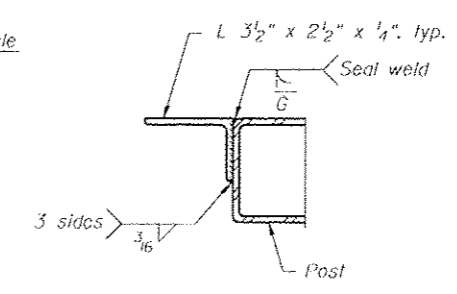


**ELEVATION GROUND LINE & STUB POST**

\* For all "Point 1" and "Point 2" locations, "Clearance Line" must be at or above top of stub post.

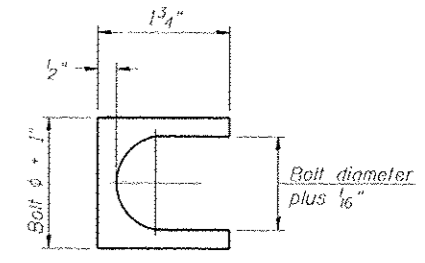


**SECTION B-B**



**SECTION C-C**

Weld continuously around corners.



**SHIM DETAIL**

Furnish two 0.01" thick and two 0.03" thick stainless steel or brass (ASTM B36) shims per post.

BAT-A-2

6-1-12

(Sheet 2 of 2)

TYLIN INTERNATIONAL	USER NAME	DESIGNED	REVISED
	PROJECT SCALE	DRAWN	REVISED
	PROJECT DATE	CHECKED	REVISED
		DATE	REVISED

STATE OF ILLINOIS  
DEPARTMENT OF TRANSPORTATION

BREAK-AWAY TUBULAR STEEL  
SIGN POSTS AND DETAILS

F.A.I. RTE.	SECTION	COUNTY	TOTAL SHEETS	SHEET NO.
57	99-1HB-RI	WILL	679	303
CONTRACT NO. 60L69				

SCALE: SHEET OF SHEETS STA. TO STA.

ILLINOIS FED. AID PROJECT