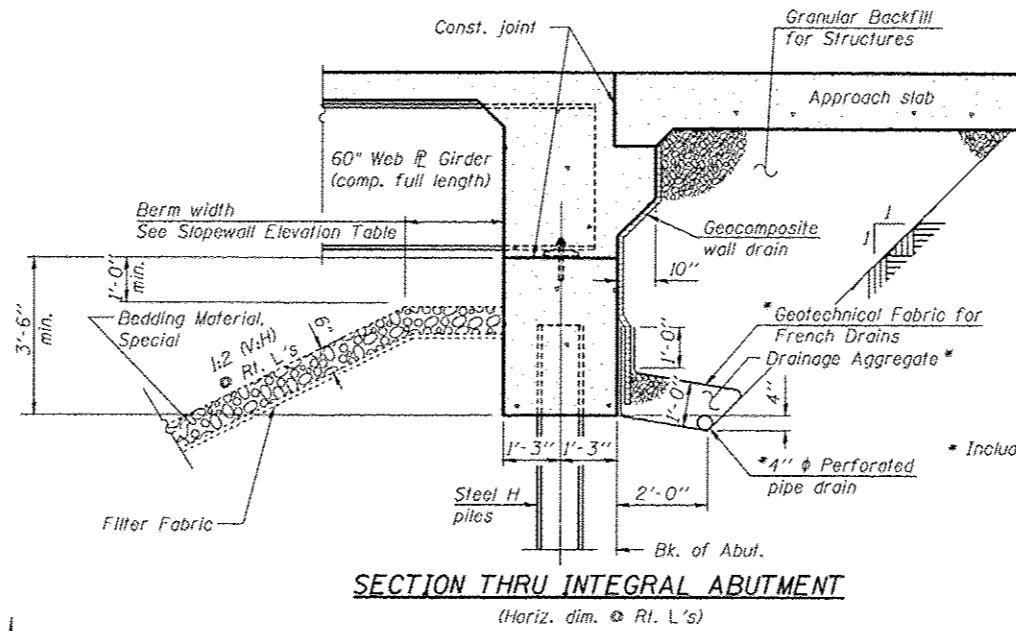


**GENERAL NOTES:**

1. Reinforcement bars designated (E) shall be epoxy coated.
2. Plan dimensions and details relative to existing plans are subject to nominal construction variations. The contractor shall field verify existing dimensions and details affecting new construction and make necessary approved adjustments prior to construction or ordering of materials. Such variations shall not be cause for additional compensation for a change in scope of the work, however, the contractor will be paid for the quantity actually furnished at the unit price bid for the work.
3. Slipforming of the parapets is not allowed.

**TOTAL BILL OF MATERIAL**

ITEM	UNIT	SUPER	SUB	TOTAL
Filter Fabric	Sq Yd		162	162
Structure Excavation	Cu Yd		32	32
Concrete Structures	Cu Yd		82.9	82.9
Concrete Superstructure	Cu Yd	390.8		390.8
Bridge Deck Grooving	Sq Yd	347		347
Protective Coat	Sq Yd	749		749
Reinforcement Bars, Epoxy Coated	Pound	77,440	15,480	92,920
Bridge Fence Railing	Foot	22		22
Bridge Fence Railing (Sidewalk)	Foot	57		57
Parapet Railing	Foot	53		53
Geocomposite Wall Drain	Sq Yd		212	212
Pipe Underdrain for Structures 4"	Foot		298	298
Bedding Material, Special	Cu Yd		27	27
Removal of Temporary Soil Retention System	Sq Ft		534	534
Granular Backfill for Structures	Cu Yd		461	461
Silicone Joint Sealer, 1"	Foot		60	60



\* Included in the cost of Pipe Underdrains for Structures

**INTEGRAL ABUTMENT NOTES:**

All drainage system components shall extend to 2'-0" from the end of each wingwall except an outlet pipe shall extend until intersecting with the side slopes. The pipes shall drain into concrete headwalls. (See Article 601.05 of the Standard Specifications and Highway Standard 601101)

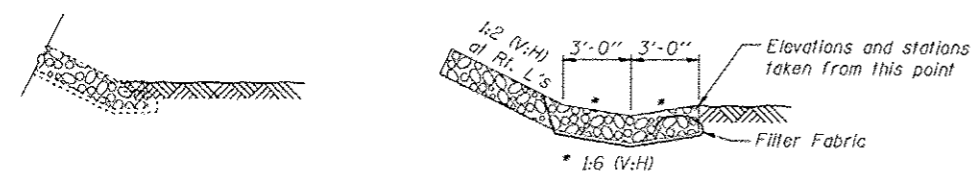
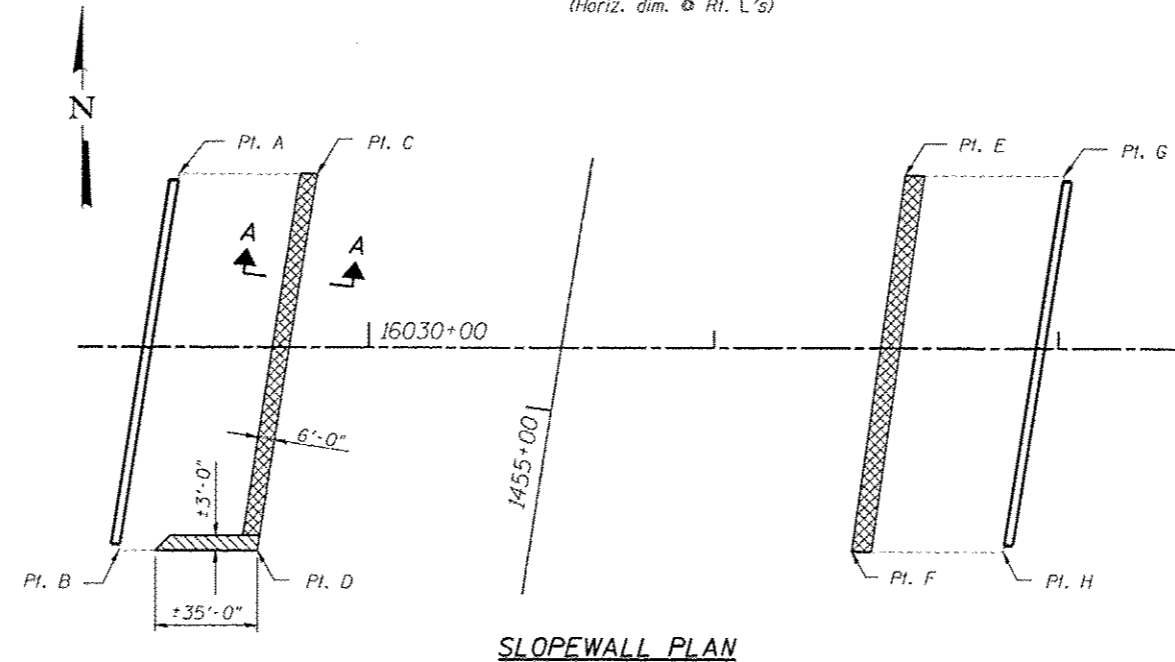
Excavation to place pipe underdrain is paid for as Structure Excavation.

**INDEX OF SHEETS**

- SA-1 General Plan and Elevation
- SA-2 General Notes, Index of Sheets & Bill of Material
- SA-3 Top of Approach Slab Elevations - Layout
- SA-4 Top of Approach Slab Elevations
- SA-5 Bridge Approach Slab Plan
- SA-6 Bridge Approach Slab Details
- SA-7 Bridge Fence Railing, Sidewalk Mounted
- SA-8 Bridge Fence Railing, Parapet Mounted
- SA-9 West Abutment
- SA-10 East Abutment

SLOPEWALL ELEVATIONS			
LOCATION	Elev.	Berm Width	
Pt. A - Sta. 1455+51.34, Offset 117.56' Lt.	775.72		
Pt. B - Sta. 1454+40.53, Offset 117.78' Lt.	776.12		
Pt. C - Sta. 1455+59.12, Offset 68.89' Lt.	758.10		
Pt. D - Sta. 1454+47.84, Offset 69.03' Lt.	758.50		
Pt. E - Sta. 1455+85.44, Offset 92.72' Rt.	757.10		
Pt. F - Sta. 1454+72.89, Offset 94.86' Rt.	757.20		
Pt. G - Sta. 1455+92.59, Offset 135.80' Rt.	776.13	1'-8"	
Pt. H - Sta. 1454+79.29, Offset 135.97' Rt.	776.05		

Note:  
The vast majority of the slopewall was constructed in IDOT Contract 60T40 and was placed between the Temporary Soil Retention system. The table is provided for information to assist in the proposed work.



**SECTION AA**  
(Existing conditions)

**SECTION AA**  
(Proposed Conditions)

**LEGEND**

- Denotes Slopewall Installation
- Denotes Slopewall Regrading (as determined by Engineer, area and work included in the Pay Item, Bedding Material, Special)

TYLIN INTERNATIONAL	USER NAME =	DESIGNED - PK	REVISED - 1/6/2014 S.P.	STATE OF ILLINOIS DEPARTMENT OF TRANSPORTATION	GENERAL NOTES, INDEX OF SHEETS & BILL OF MATERIAL STRUCTURE NO. 099-0526	F.A.I. R.T.E. =	SECTION	COUNTY	TOTAL SHEETS	SHEET NO.	
	PLOT SCALE =	CHECKED - SP	REVISED -			57	99-IHB-R1	WILL	679	354	
	PLOT DATE =	DRAWN - PK	REVISED -			CONTRACT NO. 60L69					
		CHECKED - SP/PDF	REVISED -			ILLINOIS FED. AID PROJECT					

Entire Sheet Revised