

| F.A.P. RTE. | SECTION   | COUNTY   | TOTAL SHEETS       | SHEET NO. |
|-------------|-----------|----------|--------------------|-----------|
| 541         | X-6-B-I-1 | LAKE     | 93                 | 1         |
|             |           | ILLINOIS | CONTRACT NO. 60N22 |           |

STATE OF ILLINOIS  
DEPARTMENT OF TRANSPORTATION

DIVISION OF HIGHWAYS

**PROPOSED  
HIGHWAY PLANS**

FAP ROUTE 541: IL ROUTE 132 (GRAND AVENUE)  
OVER DES PLAINES RIVER  
SECTION X-6-B-I-1  
PROJECT: ACNHPP-0541(012)  
BRIDGE SUPER-STRUCTURE REPLACEMENT  
LAKE COUNTY  
C-91-271-11

FOR INDEX OF SHEETS, SEE SHEET NO. 2  
PROJECT LOCATED IN THE VILLAGE OF GURNEE

D-91-271-11



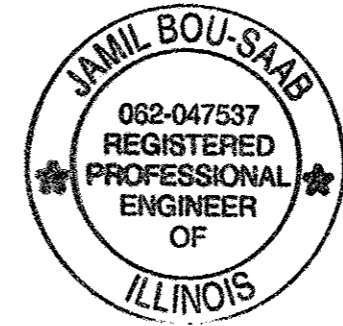
POSTED SPEED: 40 MPH  
DESIGN SPEED: 45 MPH  
FUNCTIONAL CLASSIFICATION:  
OTHER PRINCIPAL ARTERIAL  
2011 ADT = 28,700; 38,000 (2030)  
P.V. = 96% S.U. = 2% M.U. = 2%

STATE OF ILLINOIS  
DEPARTMENT OF TRANSPORTATION  
DIVISION OF HIGHWAYS

SUBMITTED September 3, 2013  
John Fortman  
DEPUTY DIRECTOR OF HIGHWAYS, REGION ENGINEER

October 4, 2013  
John D. Baranzelli, P.E.  
acting ENGINEER OF DESIGN AND ENVIRONMENT

October 4, 2013  
Omur Osman, P.E.  
DIRECTOR OF HIGHWAYS, CHIEF ENGINEER



*Jamil Bou-Saab*

JAMIL BOU-SAAB  
LICENSED PROFESSIONAL ENGINEER  
ILLINOIS NO. 062-047537 EXPIRES 11-30-13

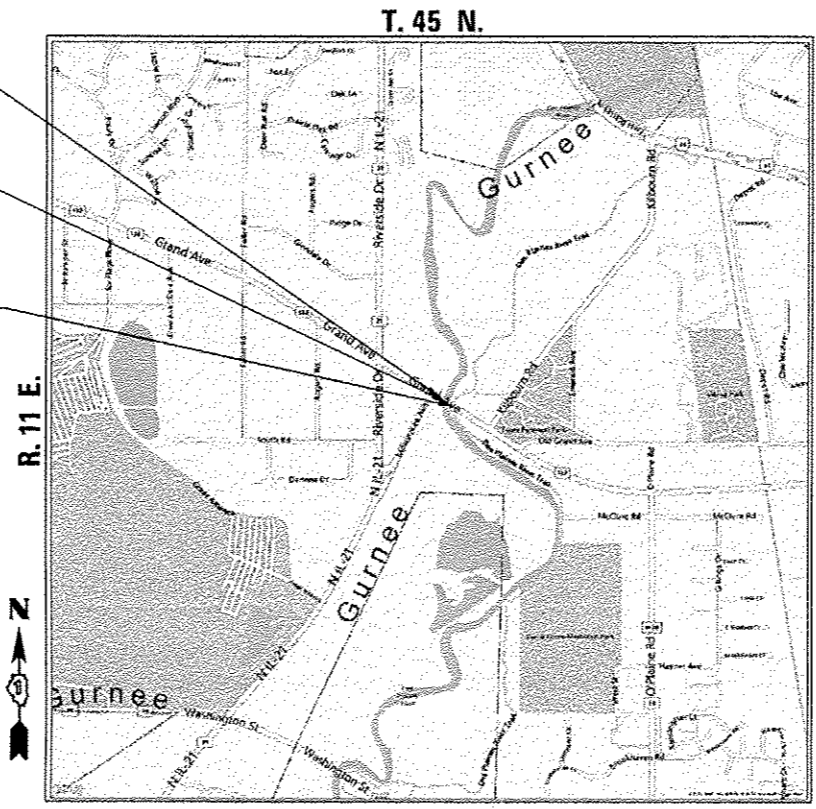


PRINTED BY THE AUTHORITY  
OF THE STATE OF ILLINOIS

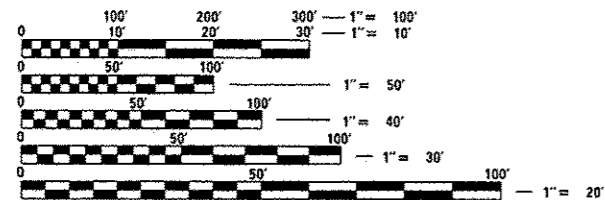
IMPROVEMENTS BEGIN  
STA. 56+45.00

PROPOSED S.N. 049-0062  
STA. 61+40.04

IMPROVEMENT ENDS  
STA. 64+50.00



LOCATION MAP  
NOT TO SCALE



FULL SIZE PLANS HAVE BEEN PREPARED USING STANDARD ENGINEERING SCALES. REDUCED SIZED PLANS WILL NOT CONFORM TO STANDARD SCALES. IN MAKING MEASUREMENTS ON REDUCED PLANS, THE ABOVE SCALES MAY BE USED.

J.U.L.I.E.  
JOINT UTILITY LOCATION INFORMATION FOR EXCAVATION  
1-800-892-0123  
OR 811

PROJECT MANAGER: ISSAM RAYYAN, P.E. (847) 705-4178  
PROJECT ENGINEER: ROBERT T. BORO, P.E. (847) 705-4237  
CONTRACT NO. 60N22

GROSS LENGTH = 805 FT. = 0.152 MILE  
NET LENGTH = 500 FT. = 0.095 MILE

9/20/2013 15:11:13 over DesPlaines River-02-15+0211.DRAWINGS\CAD00 Sheets\01IL132-wt-cover.dgn