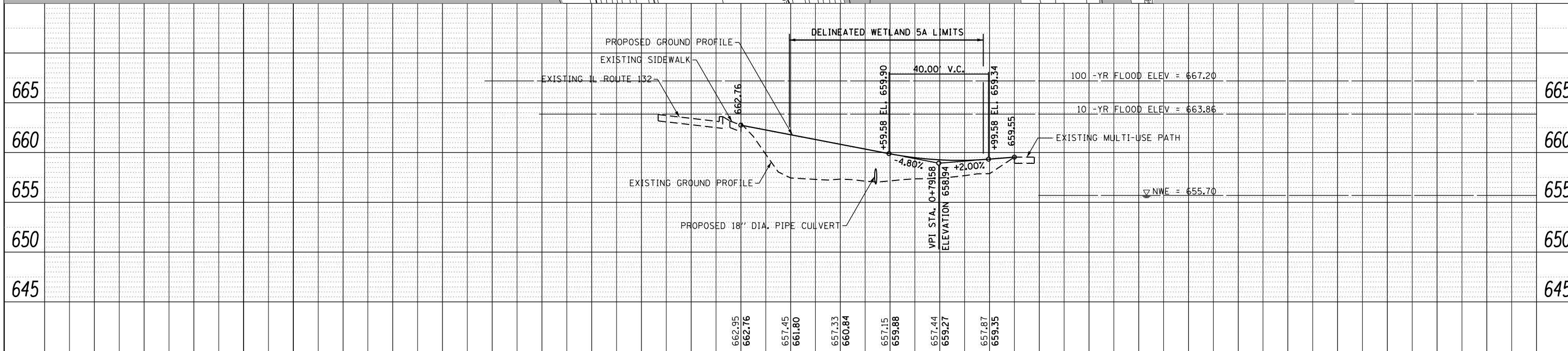
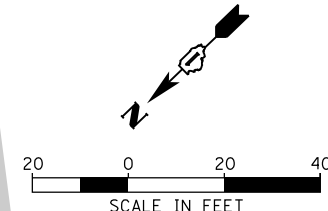
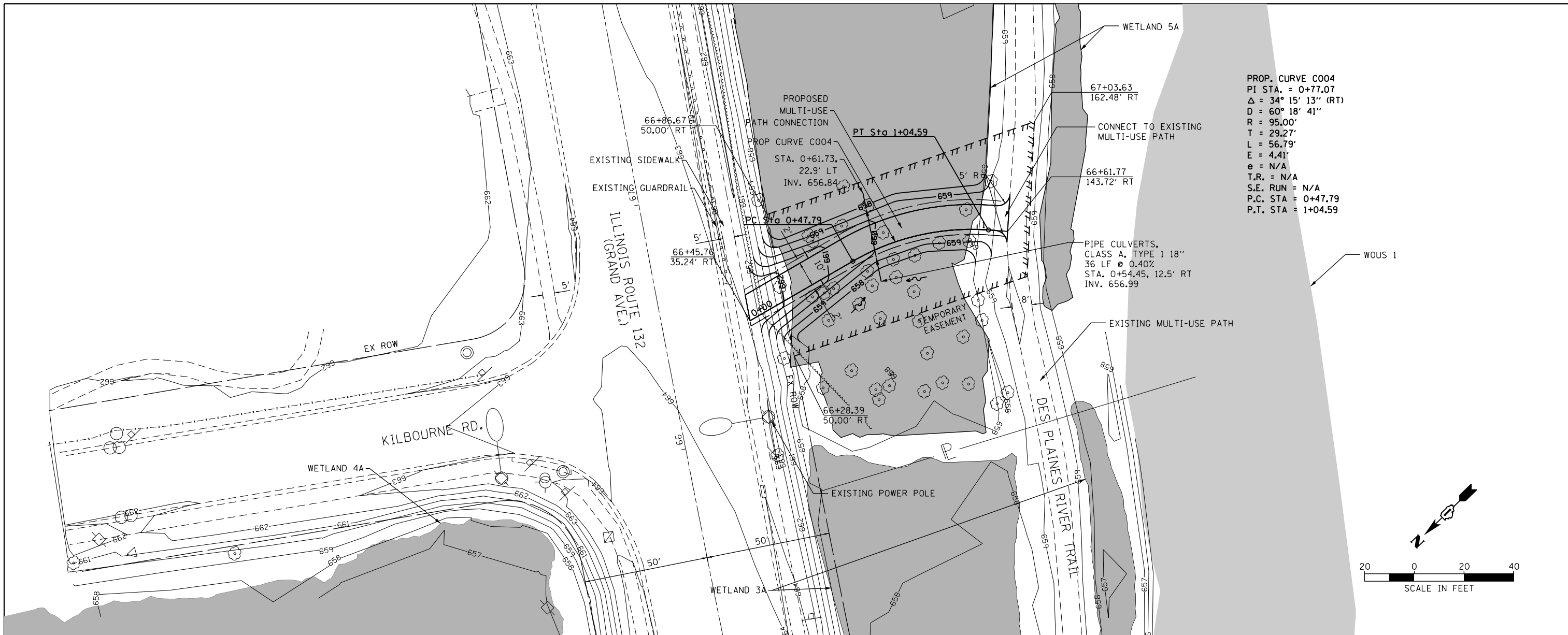


PLAN	SURVEYED	DATE
	PLOTTED	
	ALIGNED	
	CHECKED	
	FILED	
NOTE BOOK NO.	FILE NAME	

PROFILE	SURVEYED	DATE
	GRADES CHECKED	
	STRUCTURE NOTATIONS CHECKED	
NOTE BOOK NO.	NOTATION	



FILE NAME =	USER NAME = JPS	DESIGNED - KC	REVISED -	<b>STATE OF ILLINOIS</b> <b>DEPARTMENT OF TRANSPORTATION</b>	<b>IL 132 (GRAND AVE.) OVER DES PLAINES RIVER</b> <b>IL 132 CONNECTION PATH PLAN, PROFILE &amp; GRADING</b>	F.A.P. RTE. =	SECTION =	COUNTY =	TOTAL SHEETS =	SHEET NO. =	
M:\IL 132 over DesPlaines River(12-154-001)	DRAWINGS\CADD Sheets\DIIL132-sht-plnprf.Path	DRAWING.dgn	REVISED -			541	X-6B-R	LAKE	93	19	
Default	PLOT SCALE =	CHECKED - DPA	REVISED -			CONTRACT NO. 60N22					
	PLOT DATE = 12/17/2013	DATE - 12-11-2013	REVISED -			ILLINOIS FED. AID PROJECT					