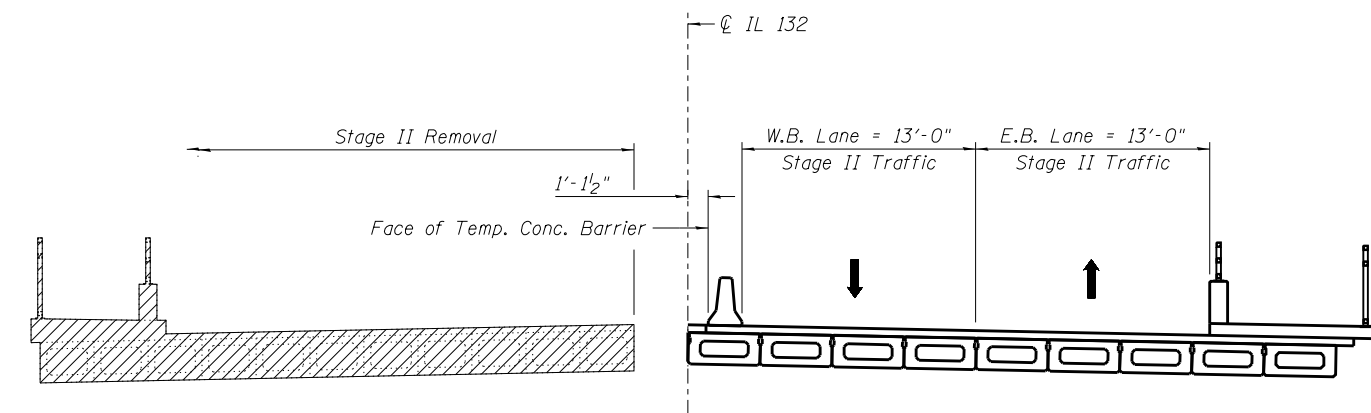
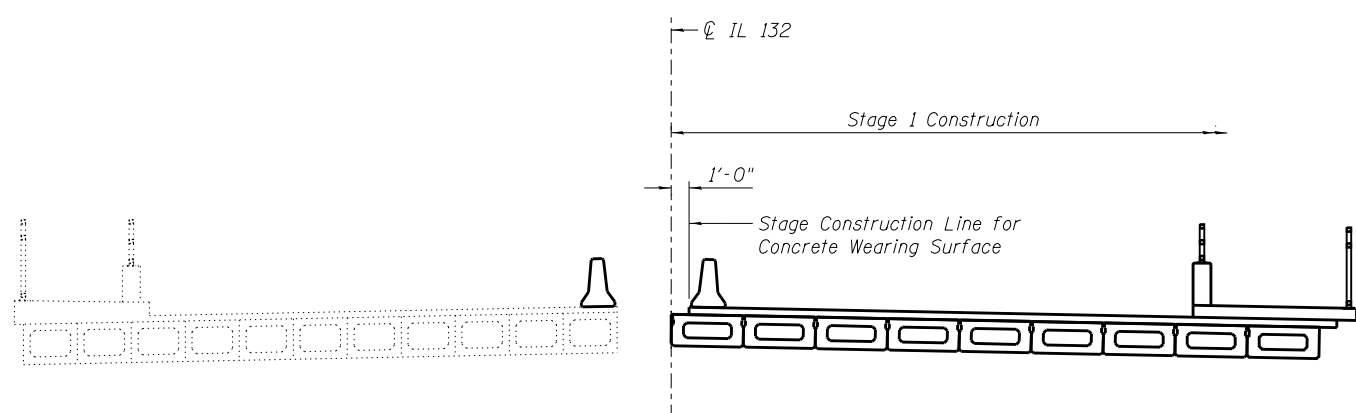


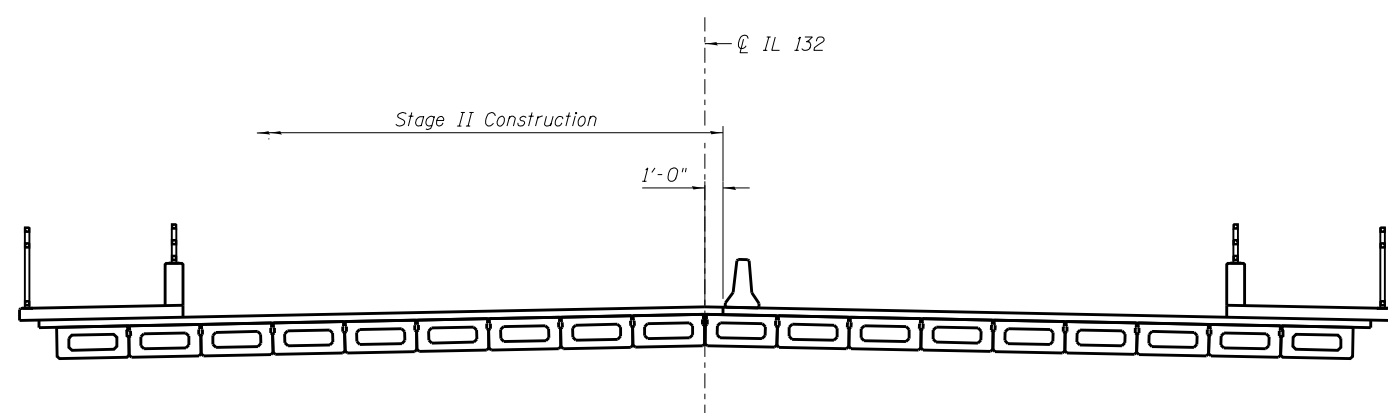
**STAGE I REMOVAL**



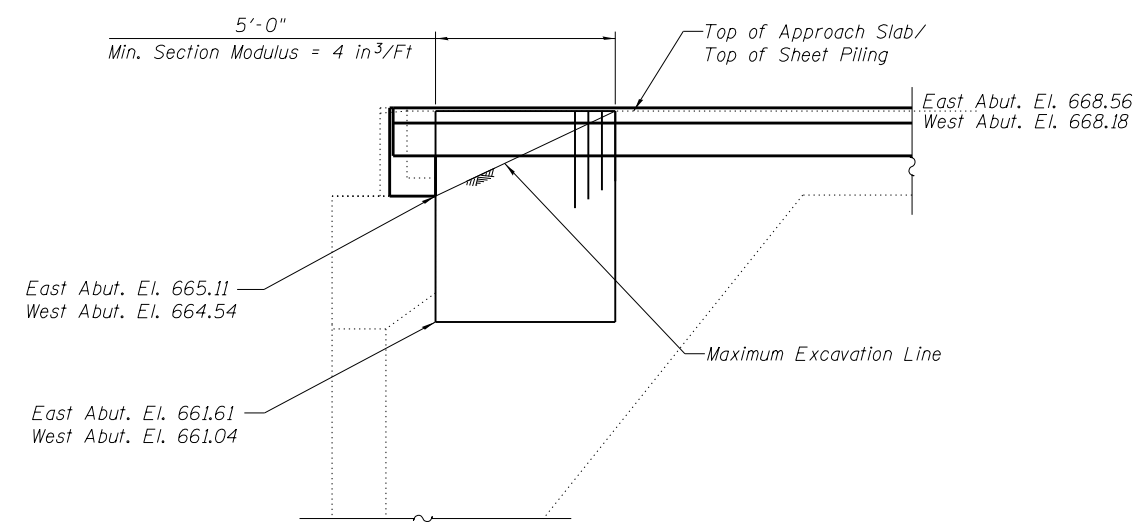
**STAGE II REMOVAL**



**STAGE I CONSTRUCTION**



**STAGE II CONSTRUCTION**



**TEMPORARY SHEET PILING**  
(At East and West Abut.)

Notes:  
 All Stage construction sections are looking east.  
 Hatched area indicates Removal of Existing Structures.  
 For quantity of Temporary Concrete Barrier, see roadway plans.  
 If the Contractor chooses to alter the temporary cantilevered sheet piling design requirements shown on the plans, a design submittal including plan details and calculations will be required for review and acceptance by the Engineer.

**BILL OF MATERIAL**

Item	Unit	Total
Temporary Sheet Piling	Sq. Ft.	71

M:\JL 132 over- Des\James River\12-15-4-001\DRAWINGS\Structure\Final Plans\CADD Sheets\049-0062\_03.staging.dgn



USER NAME = JPS  
 FILE NAME = 049-0062\_03.staging.dgn  
 PLOT DATE = 9/3/2013

DESIGNED - OY	REVISED
CHECKED - DB	REVISED
DRAWN - CM	REVISED
CHECKED - OY	REVISED

**STATE OF ILLINOIS  
 DEPARTMENT OF TRANSPORTATION**

**STAGE CONSTRUCTION DETAILS  
 STRUCTURE NO. 049-0062**

SHEET NO. S3 OF S23 SHEETS

F.A.P. RTE.	SECTION	COUNTY	TOTAL SHEETS	SHEET NO.
541	X-6B-R	LAKE	93	44
ILLINOIS FED. AID PROJECT			CONTRACT NO. 60N22	