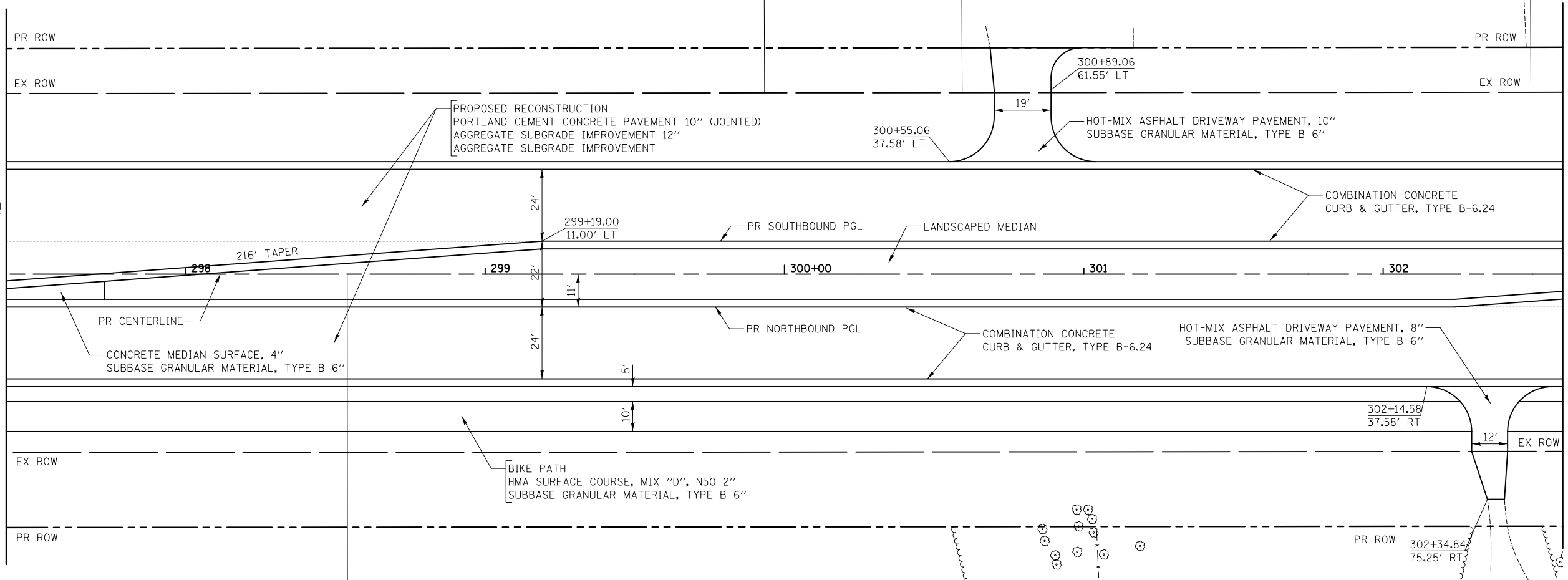


PLAN	SURVEYED	DATE
	PLOTTED	
	CHECKED	
	BY	
	NO.	

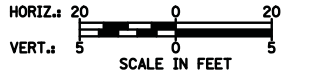
PROFILE	SURVEYED	DATE
	PLOTTED	
	CHECKED	
	BY	
	NO.	

MATCH LINE STA. 297+40
SEE SHEET NO. 42

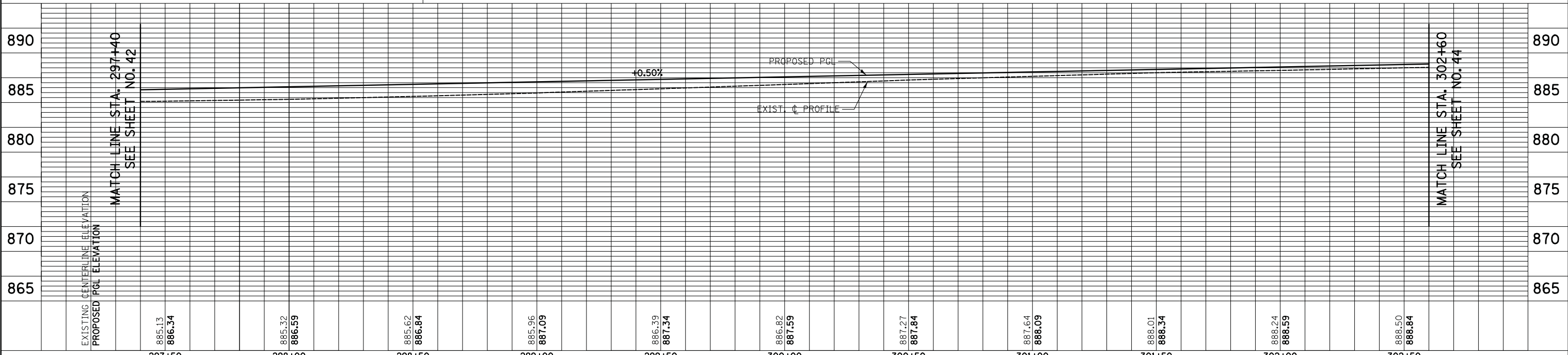


MATCH LINE STA. 302+60
SEE SHEET NO. 44

- NOTES:
- ALL DRIVEWAY RADII SHALL BE 15' UNLESS OTHERWISE NOTED



ILLINOIS ROUTE 31



FILE NAME = ...\\2278NG_P&P_06.dgn	USER NAME = kwh	DESIGNED - KWH	REVISED -	STATE OF ILLINOIS DEPARTMENT OF TRANSPORTATION	PLAN AND PROFILE			F.A.U. RTE. 3887	SECTION 18W&RS-5 (12)	COUNTY MCHENRY	TOTAL SHEETS 151	SHEET NO. 43
	PLOT SCALE = 20.0000' / in.	CHECKED - GAB	REVISED -		SCALE: 1" = 20'	SHEET NO. 6 OF 10 SHEETS	STA. 297+40 TO STA. 302+60	CONTRACT NO. 60V72				
	PLOT DATE = 8/5/2013	DATE - 06/24/2013	REVISED -		FED. ROAD DIST. NO. 1 ILLINOIS FED. AID PROJECT							