

F. A. RTE.	SECTION	COUNTY	TOTAL SHEETS	SHEET NO.
VAR.	2013-043BR	COOK	22	1
		ILLINOIS	CONTRACT NO. 60W97	

\*22 + 2 = 24

STATE OF ILLINOIS  
DEPARTMENT OF TRANSPORTATION  
DIVISION OF HIGHWAYS

**PROPOSED  
HIGHWAY PLANS**

FOR INDEX OF SHEETS SEE SHEET NO. 2

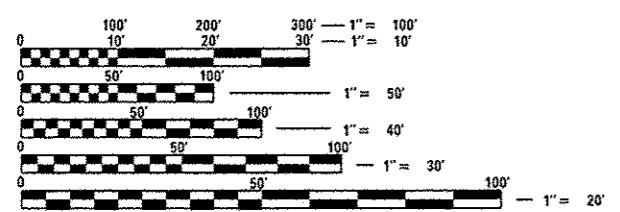
IMPROVEMENTS ARE LOCATED IN THE CITY OF FOREST VIEW AND THE VILLAGES OF SUMMIT AND DOLTON.

VARIOUS LOCATIONS  
VARIOUS STRUCTURES  
SECTION 2013-043BR  
BRIDGE REPAIR  
COOK COUNTY

D-91-411-13



SEE LOCATION MAPS  
SHEETS 5-7



FULL SIZE PLANS HAVE BEEN PREPARED USING STANDARD ENGINEERING SCALES. REDUCED SIZED PLANS WILL NOT CONFORM TO STANDARD SCALES. IN MAKING MEASUREMENTS ON REDUCED PLANS, THE ABOVE SCALES MAY BE USED.

J.U.L.I.E.  
JOINT UTILITY LOCATION INFORMATION FOR EXCAVATION  
1-800-892-0123  
OR 811

PROJECT ENGINEER: J. ALAIN MIDY (847) 221-3056  
PROJECT MANAGER: ISSAM RAYYAN (847) 705-4178

CONTRACT NO. 60W97

STATE OF ILLINOIS  
DEPARTMENT OF TRANSPORTATION  
DIVISION OF HIGHWAYS

SUBMITTED December 11, 2013

John Fortman  
DEPUTY DIRECTOR OF HIGHWAYS, REGION ENGINEER

\_\_\_\_\_  
20  
ENGINEER OF DESIGN AND ENVIRONMENT

\_\_\_\_\_  
20  
DIRECTOR OF HIGHWAYS, CHIEF ENGINEER

PRINTED BY THE AUTHORITY  
OF THE STATE OF ILLINOIS