

|                     |             |                    |              |           |
|---------------------|-------------|--------------------|--------------|-----------|
| F.A.P. RTE.         | SECTION     | COUNTY             | TOTAL SHEETS | SHEET NO. |
| 350                 | 461TS-2(13) | COOK               | 42           | 1         |
| FED. ROAD DIST. NO. | ILLINOIS    | CONTRACT NO. 60X25 |              |           |
| *42 + 3 = 45        |             |                    |              |           |

**STATE OF ILLINOIS**  
**DEPARTMENT OF TRANSPORTATION**  
**DIVISION OF HIGHWAYS**

**PROPOSED**  
**HIGHWAY PLANS**

**FAP 350 (IL ROUTE 50 /CICERO AVENUE)**  
**AT SOUTHWEST HIGHWAY**  
**SECTION 461TS-2(13)**  
**PROJECT: ACHSIP-0350(040)**  
**INTERSECTION IMPROVEMENT AND**  
**TRAFFIC SIGNAL MODERNIZATION**  
**COOK COUNTY**  
**C-91-046-14**

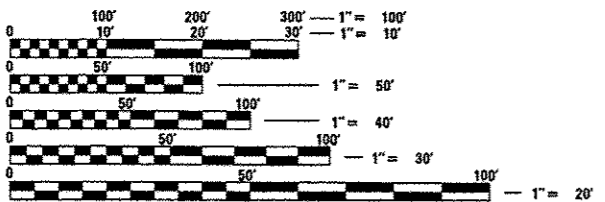
| FUNCTIONAL CLASSIFICATION       |                                     | ADT    | SPEED |
|---------------------------------|-------------------------------------|--------|-------|
| IL ROUTE 50                     | OTHER PRICIPAL ARTERIAL / SRA ROUTE | 43,500 | 35MPH |
| SOUTHWEST HWY WEST OF IL RTE 50 | MINOR ARTERIAL                      | 27,400 | 30MPH |
| SOUTHWEST HWY EAST OF IL RTE 50 | MAJOR COLLECTOR                     | 17,700 | 30MPH |

**THIS PROJECT IS LOCATED IN THE VILLAGE OF OAK LAWN**

**FOR LIST OF INDEX SHEETS, SEE SHEET NO. 2**

**IDOT HIGHWAY STANDARDS:**

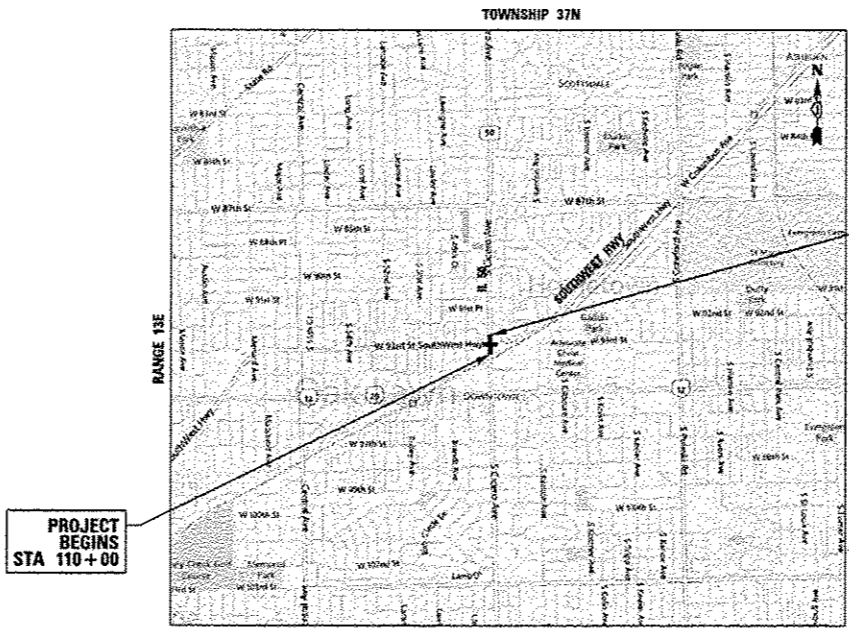
| STD. No.  | DESCRIPTION   |
|-----------|---|
| 000001-06 | STANDARD SYMBOLS, ABBREVIATIONS AND PATTERNS                                |
| 001006    | DECIMAL OF AN INCH AND OF A FOOT  |
| 424001-07 | PERPENDICULAR CURB RAMPS FOR SIDEWALKS                                      |
| 424011-01 | CORNER PARALLEL CURB RAMPS FOR SIDEWALKS                                    |
| 606001-05 | CONCRETE CURB TYPE B AND COMBINATION CONCRETE CURB AND GUTTER               |
| 701101-04 | OFF-RD OPERATIONS, MULTI-LANE 15, (4.5 m) TO 24" (60 mm) FROM PAVEMENT EDGE |
| 701106-02 | OFF-RD OPERATIONS, MULTI-LANE, MORE THAN 15' (4.5 m) AWAY                   |
| 701427-02 | LANE CLOSURE, MULTI-LANE, INTERMITTENT OR MOVING OPERATION FOR < 40 MPH     |
| 701602-07 | URBAN LANE CLOSURE, MULTILANE, 2W WITH BIDIRECTIONAL LEFT TURN LANE         |
| 701701-04 | URBAN LANE CLOSURE, MULTILANE INTERSECTION                                  |
| 701801-05 | SIDEWALK, CORNER OR CROSSWALK CLOSURE                                       |
| 701901-03 | TRAFFIC CONTROL DEVICES   |
| 720001-01 | SIGN PANEL MOUNTING DETAILS   |
| 814001-02 | HANDHOLES   |
| 814006-02 | DOUBLE HANDHOLES  |
| 857001-01 | STANDARD PHASE DESIGNATION DIAGRAMS AND PHASE SEQUENCES                     |
| 857006-01 | SUPERVISED RAILROAD INTERCONNECT CIRCUIT                                    |
| 862001-01 | UNINTERRUPTABLE POWER SUPPLY (UPS)  |
| 873001-02 | TRAFFIC SIGNAL GROUNDING & BONDING  |
| 878001-09 | CONCRETE FOUNDATION DETAILS   |
| 877011-05 | STEEL COMBINATION MAST ARM ASSEMBLY AND POLE 16' THROUGH 55'                |
| 877012-02 | STEEL COMBINATION MAST ARM ASSEMBLY AND POLE 56' THROUGH 75'                |
| 880001-01 | SPAN WIRE MOUNTED SIGNALS AND FLASHING BEACON INSTALLATION                  |
| 880006-01 | TRAFFIC SIGNAL MOUNTING DETAILS   |
| 886001-01 | DETECTOR LOOP INSTALLATIONS   |



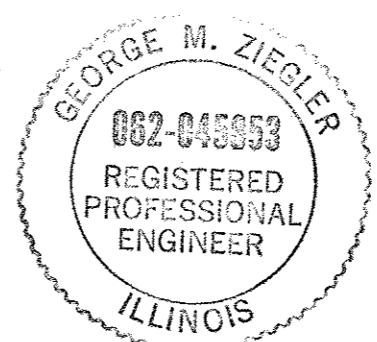
FULL SIZE PLANS HAVE BEEN PREPARED USING STANDARD ENGINEERING SCALES. REDUCED SIZED PLANS WILL NOT CONFORM TO STANDARD SCALES. IN MAKING MEASUREMENTS ON REDUCED PLANS, THE ABOVE SCALES MAY BE USED.

**J.U.L.I.E.**  
**JOINT UTILITY LOCATION INFORMATION FOR EXCAVATION**  
**1-800-892-0123**  
**OR 811**

**CONTRACT NO. 60X25**



LOCATION MAP  
 GROSS LENGTH = 1700 FEET (0.32 MILES)  
 NET LENGTH = 1700 FEET (0.32 MILES)



*George M. Ziegler*  
 12-11-2013

STATE OF ILLINOIS  
 DEPARTMENT OF TRANSPORTATION  
 DIVISION OF HIGHWAYS

APPROVED *Dec 13 2013*  
*John D. Baranzelli*  
 DEPUTY DIRECTOR OF HIGHWAYS, REGION ENGINEER

*Jan 24 2014*  
*John D. Baranzelli, PE, PE*  
 ENGINEER OF DESIGN AND ENVIRONMENT

*Jan 24 2014*  
*Omer Osman, PE, PE*  
 DIRECTOR OF HIGHWAYS/CHIEF ENGINEER

**PRINTED BY THE AUTHORITY OF THE STATE OF ILLINOIS**

BUREAU OF TRAFFIC DISTRICT ONE, SUBUD MAHMOUD (847) 705-4420, SCHAUMBURG, IL

Rev.