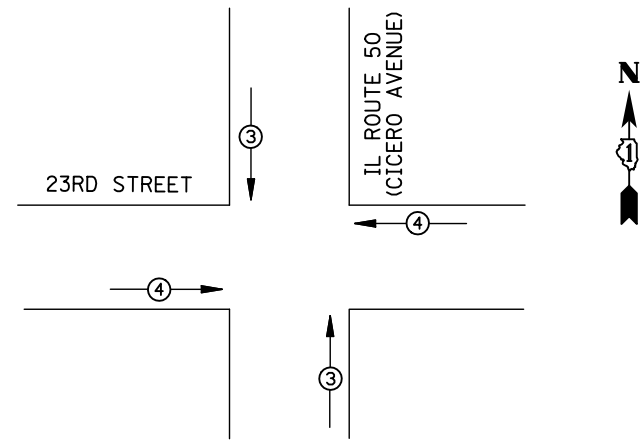
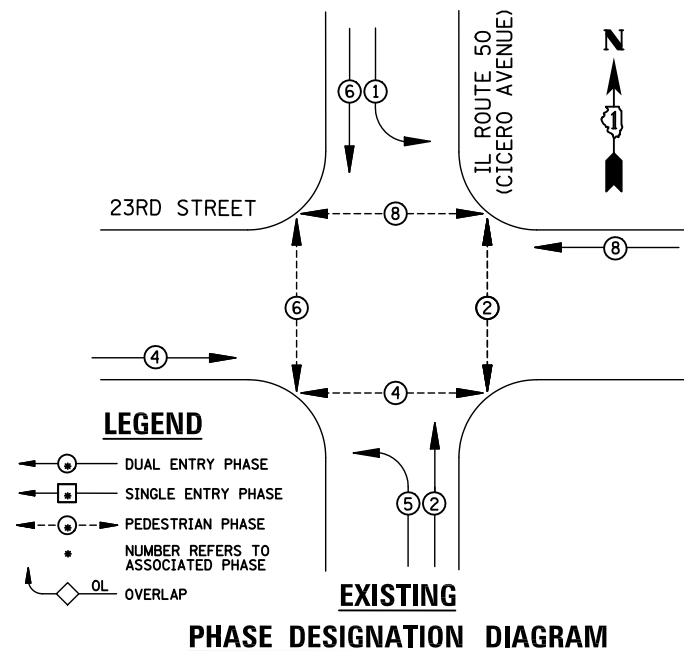


**EXISTING CONTROLLER SEQUENCE**

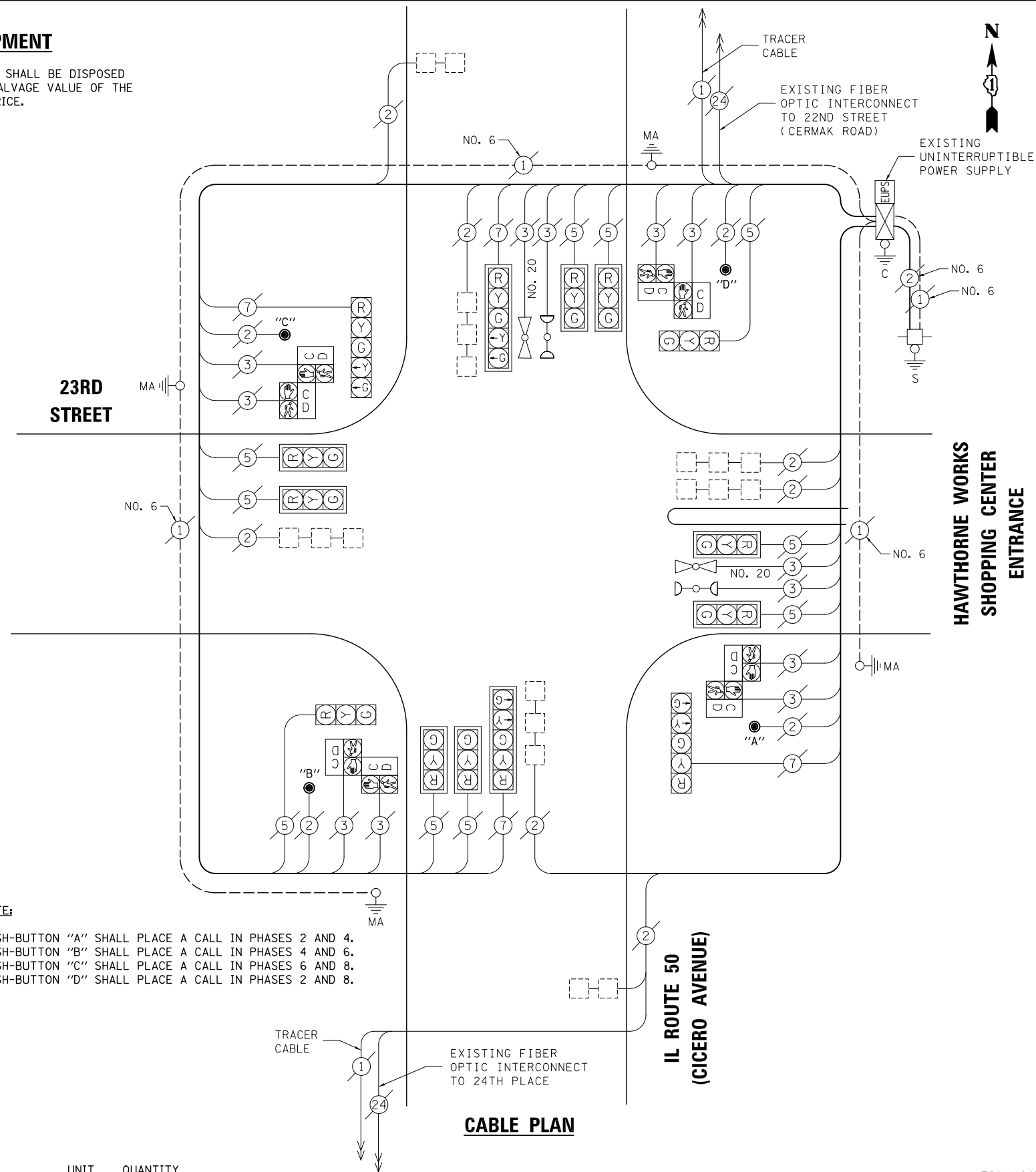


| EMERGENCY VEHICLE PREEMPTORS |   |   |  |
|------------------------------|---|---|--|
| EMERGENCY VEHICLE PREEMPTOR  | 3 | 4 |  |
| MOVEMENT                     | ↑ | → |  |

**REMOVAL OF EXISTING TRAFFIC SIGNAL EQUIPMENT**

THE FOLLOWING ITEMS SHALL BE REMOVED BY THE CONTRACTOR AND SHALL BE DISPOSED OF BY THEM OUTSIDE THE RIGHT-OF-WAY AT THEIR EXPENSE. THE SALVAGE VALUE OF THE REMOVED EQUIPMENT SHALL BE REFLECTED IN THE CONTRACT BID PRICE.

4 EACH PEDESTRIAN PUSH-BUTTON



**NOTE:**

PUSH-BUTTON "A" SHALL PLACE A CALL IN PHASES 2 AND 4.  
 PUSH-BUTTON "B" SHALL PLACE A CALL IN PHASES 4 AND 6.  
 PUSH-BUTTON "C" SHALL PLACE A CALL IN PHASES 6 AND 8.  
 PUSH-BUTTON "D" SHALL PLACE A CALL IN PHASES 2 AND 8.

**SCHEDULE OF QUANTITIES**

| ITEM  | UNIT | QUANTITY |
|---|------|----------|
| MAINTENANCE OF EXISTING TRAFFIC SIGNAL INSTALLATION | EACH | 1        |
| REMOVE EXISTING TRAFFIC SIGNAL EQUIPMENT            | EACH | 1        |
| PEDESTRIAN PUSH-BUTTON, NON-LATCHING                | EACH | 4        |

| I.D.O.T<br>TRAFFIC SIGNAL INSTALLATION<br>ELECTRICAL SERVICE REQUIREMENTS                                       |                           |                    |           |            | TOTAL<br>WATTAGE        |
|---|---------------------------|--------------------|-----------|------------|-------------------------|
| TYPE  | NO. LAMPS                 | WATTAGE<br>INCAND. | LED       | %OPERATION |                         |
| SIGNAL (RED)  | 14                        | 135                | 17        | 0.50       | 119                     |
| (YELLOW)  | 14                        | 135                | 25        | 0.25       | 87.5                    |
| (GREEN)   | 14                        | 135                | 15        | 0.25       | 52.5                    |
| ARROW   | 8                         | 135                | 12        | 0.10       | 9.6                     |
| PED. SIGNAL   | 8                         | 90                 | 25        | 1.00       | 200                     |
| CONTROLLER  | 1                         | 100                | 100       | 1.00       | 100                     |
| ILLUM. SIGN   |                           | 84                 | 100       | 0.50       |                         |
| FLASHER   |                           | 135                | 25        | 0.50       |                         |
| ENERGY COSTS TO:<br>ILLINOIS DEPARTMENT OF TRANSPORTATION<br>201 WEST CENTER COURT<br>SCHAUMBURG, IL 60196-1096 |                           |                    |           |            | TOTAL =<br><b>568.6</b> |
| ENERGY SUPPLY   | CONTACT: X                |                    |           |            |                         |
|   | PHONE: X                  |                    |           |            |                         |
|   | COMPANY: X                |                    |           |            |                         |
| FILE NAME =<br>MICROST\352108\<br>40-11645.DGN  | USER NAME = JGC           | DESIGNED - BPT     | REVISED - |            |                         |
|   |                           | DRAWN - JGC/RDS    | REVISED - |            |                         |
|   | PLOT SCALE = NOT TO SCALE | CHECKED - BPT      | REVISED - |            |                         |
|   | PLOT DATE = X             | DATE - 12-04-13    | REVISED - |            |                         |

**STATE OF ILLINOIS  
DEPARTMENT OF TRANSPORTATION**

**SCHEDULE OF QUANTITIES, CABLE PLAN,  
PHASE DESIGNATION DIAGRAM AND EMERGENCY VEHICLE PREEMPTION  
IL ROUTE 50 (CICERO AVENUE) AT 23RD STREET**

SCALE: N.T.S. SHEET NO. OF SHEETS STA. TO STA.

PREPARED BY:  
**CEMCON, Ltd.**  
Consulting Engineers, Land Surveyors & Planners  
2280 White Oak Circle, Suite 100  
Aurora, Illinois 60504-9675  
Ph: 630.862.2100 Fax: 630.862.2199  
E-Mail: cadd@cemcon.com Website: www.cemcon.com

| F.A.P. RTE. | SECTION    | COUNTY | TOTAL SHEETS | SHEET NO. |
|-------------|------------|--------|--------------|-----------|
| VAR.        | 2013-054TS | COOK   | 92           | 53        |

CONTRACT NO. 60X29  
FED. ROAD DIST. NO. ILLINOIS FED. AID PROJECT

TS# 11645  
CICERO