

STATE OF ILLINOIS
DEPARTMENT OF TRANSPORTATION
DIVISION OF HIGHWAYS

**PROPOSED
HIGHWAY PLANS**

FAP ROUTE 345: ELGIN O'HARE EXPRESSWAY
SECTION: 2013-073DM
AT VARIOUS LOCATIONS
BUILDING DEMOLITION
DUPAGE & COOK COUNTIES
C-91-115-14

PROJECT: ACPNRS-0345 (05B)

F.A.P. RTE.	SECTION	COUNTY	TOTAL SHEETS	SHEET NO.
345	2013-073DM	DUPAGE/COOK	13	1
		ILLINOIS	CONTRACT NO. 60X50	

FOR INDEX OF SHEETS, SEE SHEET NO. 2

THE PROJECT IS LOCATED IN
THE VILLAGES OF ITASCA AND
FRANKLIN PARK

TRAFFIC DATA:

THORNDALE AVE

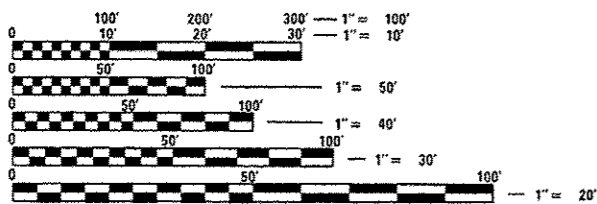
2012 ADT = 39,500

POSTED SPEED LIMIT = 45 MPH

FRANKLIN AVE

2010 ADT = 12,600

POSTED SPEED LIMIT = 35 MPH



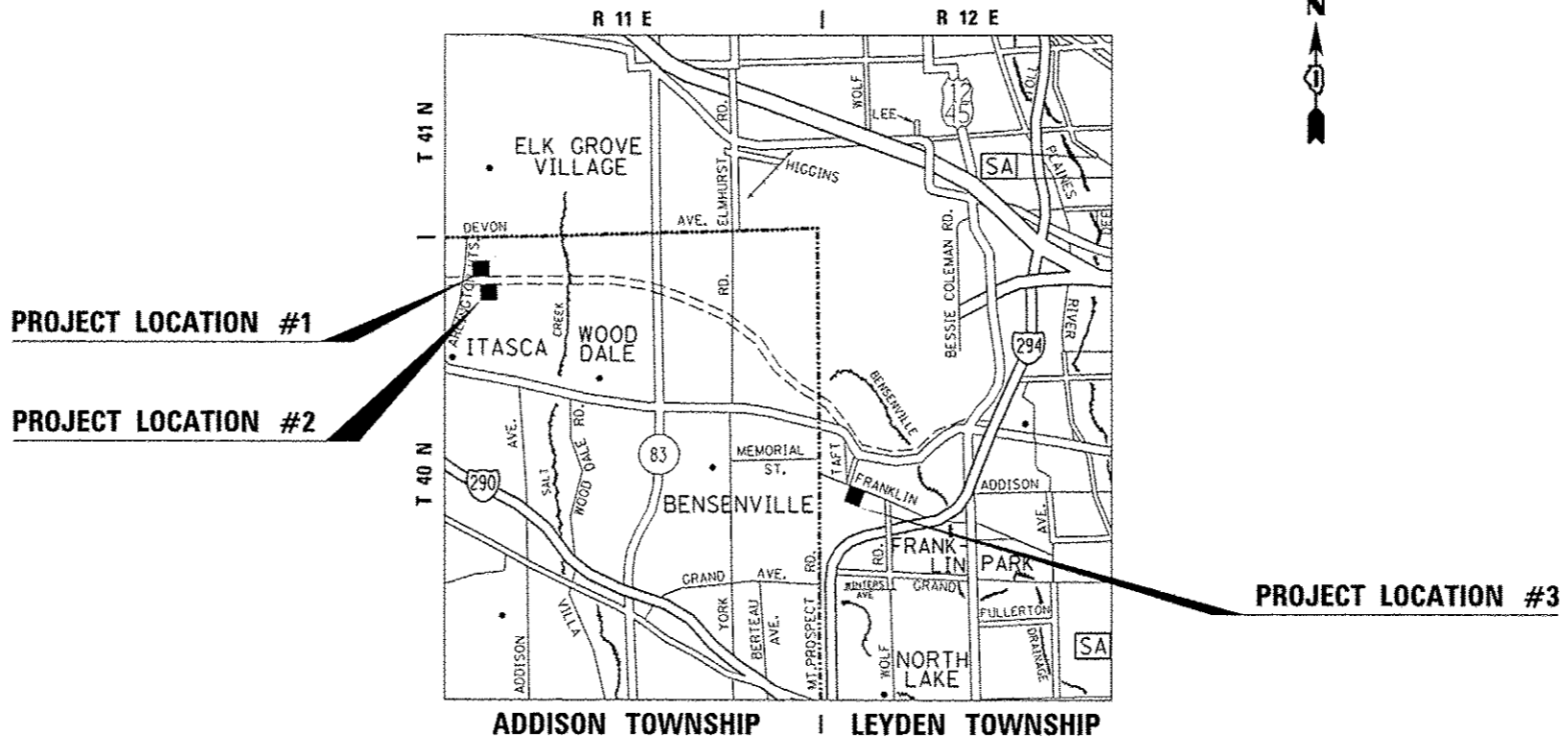
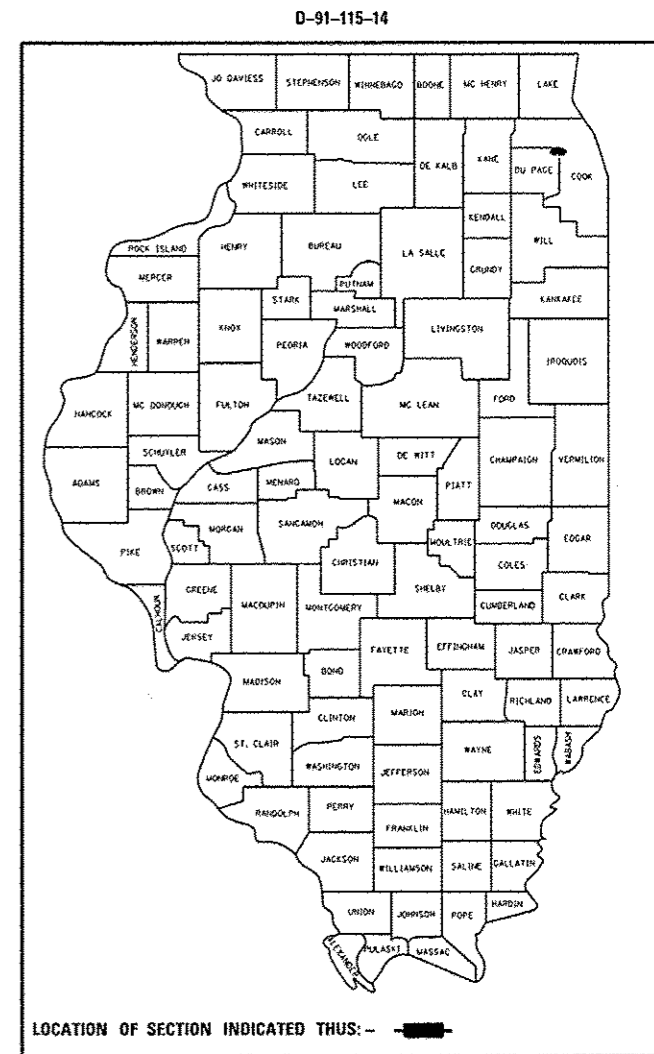
FULL SIZE PLANS HAVE BEEN PREPARED USING STANDARD ENGINEERING SCALES. REDUCED SIZED PLANS WILL NOT CONFORM TO STANDARD SCALES. IN MAKING MEASUREMENTS ON REDUCED PLANS, THE ABOVE SCALES MAY BE USED.

J.U.L.I.E.
JOINT UTILITY LOCATION INFORMATION FOR EXCAVATION
1-800-892-0123
OR 811

PROJECT ENGINEER: DAN WILGREEN (847) 705-4240

PROJECT MANAGER: KEN ENG (847) 705-4247

CONTRACT NO. 60X50



STATE OF ILLINOIS
DEPARTMENT OF TRANSPORTATION
DIVISION OF HIGHWAYS

SUBMITTED 12/11/2013

John F. ...
DEPUTY DIRECTOR OF HIGHWAYS, REGION ENGINEER

Jan 24 2014
John D. Baranzelli PE, Jr.
ENGINEER OF DESIGN AND ENVIRONMENT

Jan 24 2014
Omer Osman PE, Jr.
DIRECTOR OF HIGHWAYS, CHIEF ENGINEER

PRINTED BY THE AUTHORITY
OF THE STATE OF ILLINOIS