

STATE OF ILLINOIS  
DEPARTMENT OF TRANSPORTATION  
DIVISION OF HIGHWAYS

**PLANS FOR PROPOSED  
FEDERAL AID HIGHWAY**

**FAU 2774 (OAK PARK AVENUE)  
FAU 1622 (183RD STREET) TO FAU 3600 (SOUTH STREET)  
ROADWAY IMPROVEMENTS  
PROJECT NO.: CMM-4003 (249)  
SECTION NO.: 13-00115-00-RS  
VILLAGE of TINLEY PARK  
COOK COUNTY  
JOB NO.: C-91-103-14**

F. A. U. RITE	SECTION	COUNTY	TOTAL SHEETS	SHEET NO.
2774	13-00115-00-RS	COOK	35	1
STA.	TO STA.			
FED. ROAD DIST. NO. 1	ILLINOIS	FED. AID PROJECT	CMM-4003 (249)	

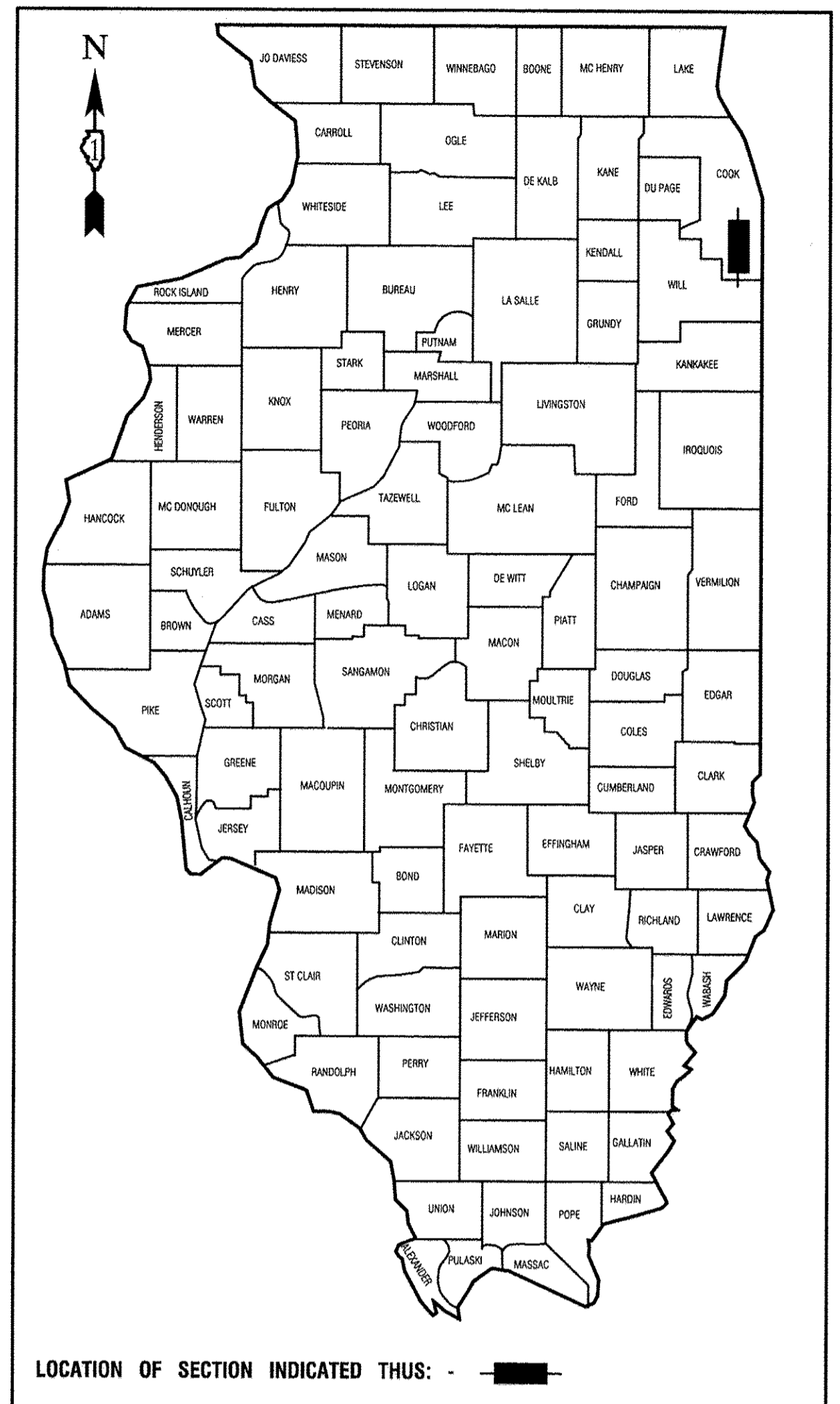
CONTRACT #61A01

**INDEX OF SHEETS**

1. COVER SHEET, INDEX OF SHEETS & STATE STANDARDS
- 2.-3. SUMMARY OF QUANTITIES & GENERAL NOTES
4. TYPICAL SECTIONS
- 5.-10. PLAN AND PROFILE
- 11.-13. PAVEMENT MARKING & SIGNING PLAN
14. TRAFFIC SIGNAL MODIFICATION PLAN
15. CABLE PLAN
- 16.-24. IDOT DISTRICT 1 STANDARD DETAILS
- 25.-35. CROSS SECTIONS

**HIGHWAY STANDARDS**

- 000001-06 STANDARD SYMBOLS, ABBREVIATIONS AND PATTERNS
- 424001-07 PERPENDICULAR CURB RAMPS
- 442201-03 CLASS C AND D PATCHES
- 606001-05 CONCRETE CURB TYPE B AND COMBINATION CONCRETE CURB AND GUTTER
- 701006-05 OFF ROAD OPERATIONS, 2L,2W, 15' TO 24" FROM PAVEMENT EDGE
- 701301-04 LANE CLOSURE, 2L,2W SHORT TIME OPERATIONS
- 701311-03 LANE CLOSURE, 2L,2W MOVING OPERATIONS - DAY ONLY
- 701502-06 URBAN LANE CLOSURE, 2L,2W, WITH BIDIRECTIONAL LEFT TURN LANE
- 701801-05 SIDEWALK, CORNER OR CROSSWALK CLOSURE
- 701901-03 TRAFFIC CONTROL DEVICES
- 720001-01 SIGN PANEL MOUNTING DETAILS
- 720006-04 SIGN PANEL ERECTION DETAILS
- 886001-01 DETECTOR LOOP INSTALLATIONS
- 886006-01 TYPICAL LAYOUTS FOR DETECTOR LOOPS



LOCATION OF SECTION INDICATED THUS: - [Black Box] -

STATE OF ILLINOIS DEPARTMENT OF TRANSPORTATION  
DIVISION OF HIGHWAYS

Approved: 12/4/2013  
*Dale Schmitt*  
Public Works Director, Village of Tinley Park

Passed: December 17, 2013  
*C. Holt*  
District 1 Engineer of Local Roads & Streets

Released for Bid Based on Limited Review: December 17, 2013  
*John Fortmann*  
Deputy Director of Highways, Region 1 Engineer

PRINTED BY THE AUTHORITY OF  
THE STATE OF ILLINOIS

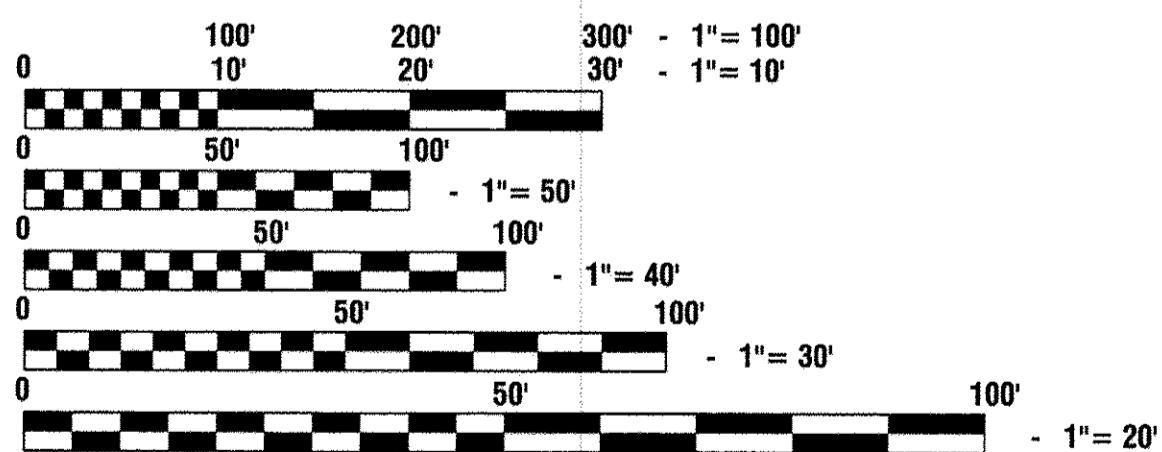
PREPARED BY OR UNDER THE  
DIRECT SUPERVISION OF:

*John Fortmann*  
12/2/2013



	OAK PARK AVENUE
2013 ADT -	10,600
2040 ADT -	14,000
POSTED SPEED LIMIT -	30 mph
DESIGN PERIOD -	20 YEARS
DESIGN SPEED LIMIT -	35 mph
STREET CLASSIFICATION -	MINOR COLLECTOR

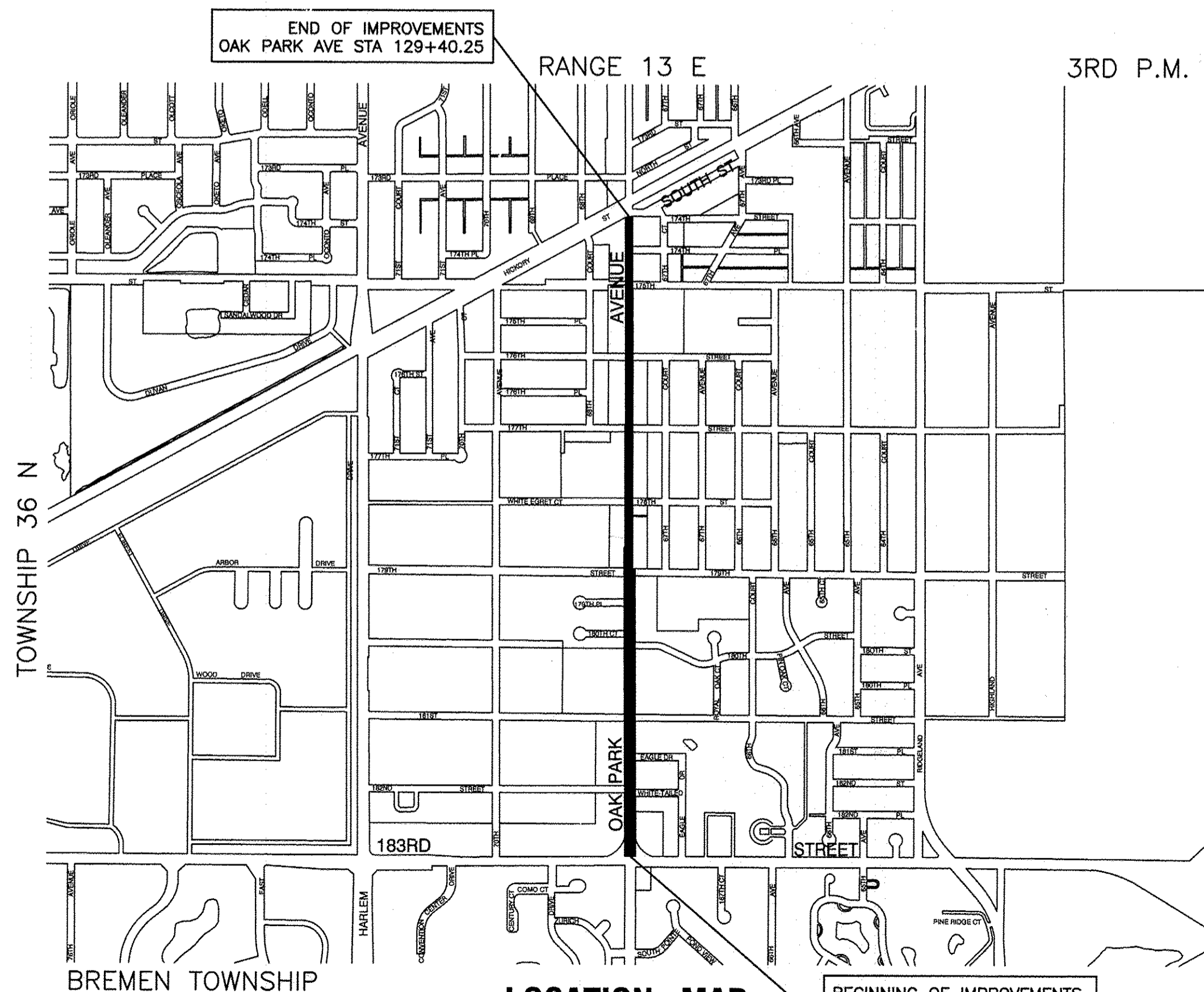
- SCALES
- PLAN - 1"=50'
  - PROFILE HORIZ. - 1"=50'
  - PROFILE VERT. - 1"=5'
  - CROSS SECTIONS - 1"=10'



FULL SIZE PLANS HAVE BEEN PREPARED USING STANDARD ENGINEERING SCALES, REDUCED SIZED PLANS WILL NOT CONFORM TO STANDARD SCALES, IN MAKING MEASUREMENTS ON REDUCED PLANS, THE ABOVE SCALES MAY BE USED.

J. U. L. I. E.  
JOINT UTILITY LOCATION INFORMATION FOR EXCAVATION  
1-800-892-0123 or 811

CONTRACT NO. 61A01



LOCATION MAP

BEGINNING OF IMPROVEMENTS  
OAK PARK AVE STA 70+47.79

GROSS LENGTH= 5,893 FEET= 1.12 MILES  
NET LENGTH= 5,893 FEET= 1.12 MILES

PROGRAM AND OFFICE ENGINEER: CHARLES F. RIDDLE, PE (847) 705-4406 SCHAUMBURG, IL  
CONSULTANTS: ROBINSON ENGINEERING, LTD. 708-331-6700