

F.A.U.RTE.	SECTION	COUNTY	TOTAL SHEETS	SHEET NO.
0006	11-00064-00-BR	MC HENRY	23	1
FED. ROAD DIST. NO.		ILLINOIS	63899	

DEPARTMENT OF TRANSPORTATION  
DIVISION OF HIGHWAYS

**PLANS FOR PROPOSED  
FEDERAL AID HIGHWAY**

**FAU 0006 (MARENGO ROAD)  
OVER MOKELER CREEK  
CULVERT REPLACEMENT  
SECTION 11-00064-00-BR  
PROJECT NO. BRM-9003(800)  
CITY OF HARVARD  
MCHENRY COUNTY  
JOB NO. C-91-457-11**

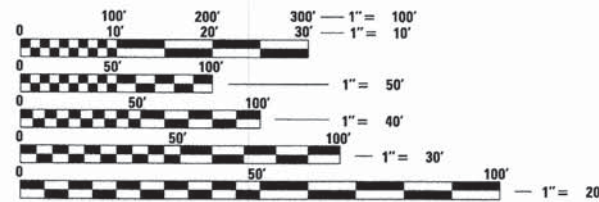


- 1 COVER SHEET
- 2 GENERAL NOTES
- 3 SUMMARY OF QUANTITIES
- 4 ALIGNMENT AND TIES
- 5 TYPICAL SECTIONS
- 6 PLAT OF HIGHWAYS
- 7 REMOVAL PLAN
- 8 ROADWAY PLAN AND PROFILE
- 9 DETOUR NOTES AND PLAN
- 10 MAINTENANCE OF TRAFFIC
- 11-12 EROSION AND SEDIMENT CONTROL PLAN
- 13-18 STRUCTURAL PLANS
- 19 STANDARD DETAILS
- 20 TC-10 Traffic control and protection for side roads, intersections, and driveways
- 21 TC-17 Traffic control details for Freeway Shoulder closures and partial ramp closures
- 22 TC-21 Detour Signing for closing State Highways
- 23 TC-22 Arterial Road Information Sign

**LIST OF STATE STANDARDS LOCATED ON SHEET NO. 2**

**PROJECT LOCATED IN THE  
CITY OF HARVARD**

**J.U.L.I.E.  
JOINT UTILITY LOCATION INFORMATION FOR EXCAVATION  
1-800-892-0123 OR 811  
T46N, R5E, SECTION 2**



FULL SIZE PLANS HAVE BEEN PREPARED USING STANDARD ENGINEERING SCALES. REDUCED SIZED PLANS WILL NOT CONFORM TO STANDARD SCALES. IN MAKING MEASUREMENTS ON REDUCED PLANS, THE ABOVE SCALES MAY BE USED.

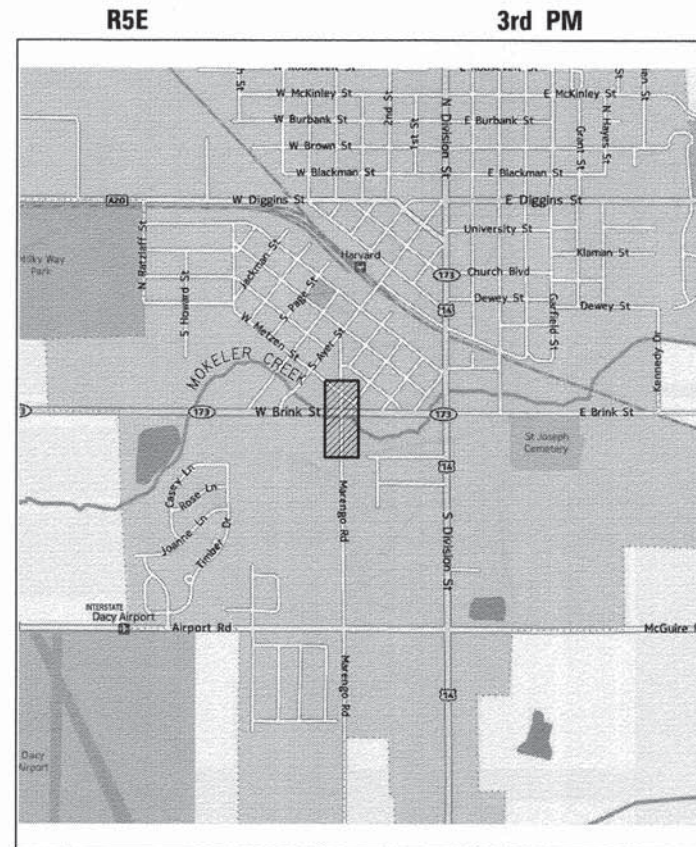
**DESIGN DESIGNATION  
MAJOR COLLECTOR**

**TRAFFIC DATA:  
MARENGO ROAD  
ADT = 1500 (2010)  
POSTED/DESIGN SPEED = 35 MPH**

**CHRISTOPHER B. BURKE ENGINEERING, LTD.**  
9575 W. Higgins Road, Suite 600  
Rosemont, Illinois 60018  
(847) 823-0500

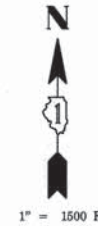
PROFESSIONAL DESIGN FIRM NO.: 184-001175  
EXPIRATION DATE: APRIL 30, 2014

**CONTRACT NO. 63899**



**LOCATION MAP**

GROSS LENGTH OF PROJECT = 199 FEET (0.04 MILES)  
NET LENGTH OF PROJECT = 199 FEET (0.04 MILES)



STATE OF ILLINOIS  
DEPARTMENT OF TRANSPORTATION  
DIVISION OF HIGHWAYS

APPROVED: *Daniel A. Nelson* 20  
CITY OF HARVARD, City Administrator TITLE

PASSED: *Dec 26* 20 13  
*C. H. [Signature]*  
DISTRICT 1 ENGINEER OF LOCAL ROADS AND STREETS

RELEASING FOR BID BASED ON LIMITED REVIEW: *December 26,* 20 13  
*[Signature]*  
DEPUTY DIRECTOR OF HIGHWAYS, REGION 1 ENGINEER



**GARY ROZWADOWSKI**  
ILLINOIS REGISTRATION No. 062-051689 ENGINEER  
EXPIRATION DATE: 11/30/2015

**PRINTED BY THE AUTHORITY  
OF THE STATE OF ILLINOIS**

PROGRAM & OFFICE ENGINEER: CHARLES F. RIDdle, PE -(847) 705-4406, SCHAUMBURG, IL



## GENERAL NOTES

1. ALL CONSTRUCTION SHALL BE DONE IN ACCORDANCE WITH THE "STANDARD SPECIFICATIONS FOR ROAD AND BRIDGE CONSTRUCTION", ADOPTED JANUARY 1, 2012; THE "SUPPLEMENTAL SPECIFICATIONS AND RECURRING SPECIAL PROVISIONS", ADOPTED JANUARY 1, 2014; THE LATEST EDITION OF THE "ILLINOIS MANUAL ON UNIFORM TRAFFIC CONTROL DEVICES FOR STREETS AND HIGHWAYS" (IMUTCD), "THE STANDARD SPECIFICATIONS FOR WATER AND SEWER MAIN CONSTRUCTION IN ILLINOIS" MAY 1996 SIXTH EDITION, THE "DETAILS" IN THE PLANS, LATEST EDITION OF THE MANUAL OF TEST PROCEDURE OF MATERIALS, THE "SPECIAL PROVISIONS" INCLUDED IN THE CONTRACT DOCUMENTS, THE AMERICANS WITH DISABILITIES ACT OF 1990 ACCESSIBILITY GUIDELINES, THE "DRAFT" REHABILITATION ACT OF 1973 (SECTION 504), AND THE PUBLIC RIGHT-OF-WAY ACCESSIBILITY GUIDELINES.
  2. WHERE SECTION OR SUBSECTION MONUMENTS ARE ENCOUNTERED, THE ENGINEER SHALL BE NOTIFIED BEFORE THE MONUMENTS ARE REMOVED. THE CONTRACTOR SHALL CAREFULLY PRESERVE ALL PROPERTY MARKS AND MONUMENTS UNTIL THE OWNER, AUTHORIZED SURVEYOR OR AGENT HAS WITNESSED OR OTHERWISE REFERENCED THEIR LOCATION.
  3. THE CONTRACTOR SHALL COMPLY WITH ALL RULES AND REGULATIONS OF OSHA DURING CONSTRUCTION OF IMPROVEMENTS AND RESTORATION. NEITHER THE CITY NOR ITS APPOINTED ENGINEER SHALL BE RESPONSIBLE FOR THE CONTRACTOR'S COMPLIANCE WITH OSHA.
  4. IT IS THE CONTRACTORS RESPONSIBILITY TO VERIFY ALL DIMENSIONS AND CONDITIONS PRIOR TO ORDERING MATERIALS AND BEGINNING CONSTRUCTION. NO ADDITIONAL COMPENSATION WILL BE ALLOWED FOR FAILURE TO VERIFY EXISTING DIMENSIONS OR CONDITIONS.
  5. THE CONTRACTOR SHALL LIMIT HIS CONSTRUCTION ACTIVITIES TO THE WORK AREAS DESIGNATED ON THE PLANS. ANY DAMAGE TO AREAS OUTSIDE OF THESE LIMITS SHALL BE REPAIRED BY THE CONTRACTOR AT HIS OWN EXPENSE TO THE SATISFACTION OF THE ENGINEER.
6. THE CONTRACTOR WILL BE REQUIRED TO RELOCATE OR REMOVE AND REPLACE SIGNS WHICH INTERFERE WITH CONSTRUCTION OPERATIONS, AND TO TEMPORARILY RESET ALL SUCH SIGNS DURING CONSTRUCTION OPERATIONS. THIS WORK WILL BE INCLUDED IN THE COST OF THE TRAFFIC CONTROL AND PROTECTION. IF EXISTING SIGNS ARE DAMAGED DURING THE REMOVAL AND REPLACEMENT PROCESS, THE SIGN SHALL BE REPLACED AT THE CONTRACTOR'S EXPENSE.
7. PAY ITEMS IN THE SUMMARY OF QUANTITIES HAVE BEEN ESTIMATED. IF, IN THE ENGINEER'S OPINION, THE WORK IS NOT REQUIRED, THE ITEM WILL BE DEDUCTED FROM THE CONTRACT AND NO ADDITIONAL COMPENSATION WILL BE ALLOWED.
8. ALL SAWCUTTING SHALL BE INCLUDED IN THE COST OF THE ITEM BEING REMOVED.
9. AT THE END OF EACH DAY, IT SHALL BE THE CONTRACTOR'S RESPONSIBILITY TO ASSURE THAT ALL STREETS ADJACENT TO THE PROJECT ARE FREE OF ALL CONSTRUCTION RELATED DEBRIS INCLUDING DIRT, STONE, NAILS, ETC. THE WORK SHALL BE DONE TO THE SATISFACTION OF THE ENGINEER AND THE CITY OF HARVARD.
  10. THE CONTRACTOR SHALL PROVIDE ACCESS TO ABUTTING PROPERTIES AT ALL TIMES DURING THE CONSTRUCTION OF THIS PROJECT EXCEPT FOR PERIODS OF SHORT DURATION AS APPROVED BY THE ENGINEER. A QUANTITY OF "AGGREGATE FOR TEMPORARY ACCESS" IS INCLUDED IN THE CONTRACT FOR THIS PURPOSE.
  11. THE LOCATIONS OF EXISTING UNDERGROUND UTILITIES, SUCH AS WATER MAIN, SEWERS, GAS LINES, ETC. AS SHOWN ON THE PLANS, HAVE BEEN DETERMINED FROM THE BEST AVAILABLE INFORMATION AND ARE GIVEN FOR THE CONVENIENCE OF THE CONTRACTOR. THE CONTRACTOR SHALL BE RESPONSIBLE FOR HAVING THE UTILITY COMPANIES LOCATE THEIR FACILITIES IN THE FIELD PRIOR TO CONSTRUCTION. THE CONTRACTOR SHALL CALL JULIE AT (800) 892-0123 FOR UTILITY LOCATIONS.
  12. THE CONTRACTOR SHALL BE RESPONSIBLE FOR THE PROTECTION OF ALL UNDERGROUND OR SURFACE UTILITIES EVEN THOUGH THEY MAY NOT BE SHOWN ON THE PLANS. ANY UTILITY THAT IS DAMAGED BY THE CONTRACTOR DURING CONSTRUCTION SHALL BE REPAIRED TO THE SATISFACTION OF THE ENGINEER OR OWNER. THIS WORK WILL BE AT THE CONTRACTORS EXPENSE.

13. ALL CLOSED LIDS SHALL BE STAMPED WITH THE WORD "STORM", "SANITARY" OR "WATER". THIS WORK SHALL BE INCLUDED IN THE COST OF THE PROPOSED FRAME AND LID.
14. EARTH EXCAVATION: ALL REMOVAL OR EXCAVATION ITEMS BEING DISPOSED OF AT AN UNCONTAMINATED SOIL FILL OPERATION OR CLEAN CONSTRUCTION AND DEMOLITION DEBRIS (CCDD) FILL SITE SHALL MEET THE REQUIREMENTS OF PUBLIC ACT 96-1416. ALL COSTS ASSOCIATED WITH MEETING THESE REQUIREMENTS SHALL BE INCLUDED IN THE UNIT PRICE COST FOR THE ASSOCIATED REMOVAL OR EXCAVATION ITEMS IN THE CONTRACT. THESE COSTS SHALL INCLUDE BUT ARE NOT LIMITED TO ALL REQUIRED TESTING, LAB ANALYSIS, CERTIFICATION BY A LICENSED PROFESSIONAL ENGINEER, AND STATE OR LOCAL TIPPING FEES.
15. DRAINAGE: DURING THE CONSTRUCTION OPERATIONS WHEN ANY LOOSE MATERIAL IS DEPOSITED IN THE FLOW LINE OF DITCHES, GUTTERS OR DRAINAGE STRUCTURES SO THE NATURAL FLOW OF WATER IS OBSTRUCTED, THE MATERIAL SHALL BE REMOVED AT THE CLOSE OF EACH WORKING DAY. AT THE CONCLUSION OF THE CONSTRUCTION OPERATIONS ALL DRAINAGE STRUCTURES SHALL BE FREE FROM ALL DIRT AND DEBRIS CAUSED BY THE CONSTRUCTION. THIS WORK WILL NOT BE PAID FOR SEPARATELY BUT IS INCLUDED IN THE COST OF THOSE DRAINAGE ITEMS.
16. ALL PEDESTRIAN ROUTES CONSTRUCTED AS PART OF THIS PROJECT SHALL BE ADA COMPLIANT.
  17. THE THICKNESS OF HOT-MIX ASPHALT MIXTURES SHOWN IN THE PLANS ARE NOMINAL. DEVIATIONS MAY OCCUR DUE TO IRREGULARITIES IN THE SURFACES OR BASIS ON WHICH THEY ARE TO BE PLACED. PLAN THICKNESSES SHOULD BE CONSIDERED THE MINIMUM THICKNESS PERMITTED.
  18. THE PROTECTIVE COATING SHALL BE APPLIED TO THE EXPOSED SURFACES OF THE CONCRETE CURB AND GUTTER, SIDEWALK AND DRIVEWAYS. CONCRETE CURING SHALL BE LIMITED TO METHODS SPECIFIED IN ARTICLE 1020.13 (A) [1], [2], AND [3].
  19. THE RESIDENT ENGINEER SHALL CONTACT THE IDOT TRAFFIC CONTROL SUPERVISOR AT (847) 705-4407 A MINIMUM OF 72 HOURS PRIOR TO THE PLACEMENT OF ANY TEMPORARY TRAFFIC CONTROL DEVICES ON RTE. 173.
20. THE CONTRACTOR SHALL BE SOLELY RESPONSIBLE FOR JOB SITE SAFETY AS WELL AS SUPERVISION/ DIRECTION AND MEANS/METHODS OF CONSTRUCTION.
21. SOIL BORING LOGS ARE INCLUDED IN THE PLANS. THE FULL SOILS REPORT CAN BE VIEWED AT THE CITY OF HARVARD CITY HALL, 201 W. DIGGINS STREET, HARVARD, IL.
  22. FOR WORK OUTSIDE THE LIMITS OF BRIDGE APPROACH PAVEMENT, ALL REFERENCES IN THE HIGHWAY STANDARDS AND STANDARD SPECIFICATIONS FOR REINFORCEMENT, DOWEL BARS AND TIE BARS IN PAVEMENT, SHOULDERS, CURB, GUTTER, COMBINATION CURB AND GUTTER AND MEDIAN, AND CHAIR SUPPORTS FOR CRC PAVEMENT, SHALL BE EPOXY COATED, UNLESS NOTED ON THE PLAN.
  23. CONTRACTOR SHALL NOTIFY THE IDOT ARTERIAL TRAFFIC CONTROL SUPERVISOR AT (847) 705-4470 A MINIMUM OF 72 HOURS IN ADVANCE OF ANY BEGINNING WORK OF IL RTE. 173.
  24. STORM SEWER CONNECTIONS TO EXISTING MANHOLES SHALL BE INCLUDED IN THE COST OF THE STORM SEWER.

### EROSION CONTROL NOTES:

1. ALL TEMPORARY AND PERMANENT EROSION CONTROL MEASURES MUST BE MAINTAINED AND REPAIRED AS NEEDED. THE CONTRACTOR SHALL BE ULTIMATELY RESPONSIBLE FOR MAINTENANCE AND REPAIR.
2. ANY SEDIMENT OR SOIL REACHING AN IMPROVED PUBLIC RIGHT-OF-WAY, STREET, SHALL BE REMOVED BY SCRAPING OR STREET CLEANING AS ACCUMULATIONS WARRANT AND TRANSPORTED TO A CONTROLLED SEDIMENT DISPOSAL AREA.
3. SOIL STOCKPILES SHALL NOT BE LOCATED IN A FLOOD PRONE AREA OR A DESIGNATED BUFFER PROTECTING WATERS OF THE UNITED STATES.
4. IF DEWATERING SERVICES ARE USED, ADJOINING PROPERTIES AND DISCHARGE LOCATIONS SHALL BE PROTECTED FROM EROSION. DISCHARGES

SHALL BE ROUTED THROUGH AN EFFECTIVE SEDIMENT CONTROL MEASURE (E.G. SEDIMENT TRAP, SEDIMENT BASIN, OR OTHER APPROPRIATE MEASURE).

5. THE CONTRACTOR SHALL INSTALL/MAINTAIN/ REMOVE PERIMETER EROSION BARRIER ALONG THE CREEK, AND AT ALL OTHER LOCATIONS WHERE STORM WATER SHEET FLOWS OUT OF THE WORK ZONE, AND AT LOCATIONS AS DIRECTED BY THE ENGINEER.
6. THE CONTRACTOR SHALL INSTALL/MAINTAIN/REMOVE INLET FILTERS IN ALL OPEN LID DRAINAGE STRUCTURES IN THE PAVEMENT THAT ARE WITHIN THE WORK ZONE OR ACCEPT STORMWATER THAT FLOWS OUT OF THE WORK ZONE, AND AT LOCATIONS AS DIRECTED BY THE ENGINEER.
7. THE CONTRACTOR SHALL INSTALL/MAINTAIN/REMOVE INLET AND PIPE PROTECTION IN ALL OPEN LID DRAINAGE STRUCTURES IN THE PARKWAYS THAT ARE WITHIN THE WORK ZONE OR ACCEPT STORMWATER THAT FLOWS OUT OF THE WORK ZONE, AND AT LOCATIONS AS DIRECTED BY THE ENGINEER.
8. THE EROSION CONTROL MEASURES INDICATED ON THE PLANS. ADDITIONAL MEASURES MAY BE REQUIRED, AS DIRECTED BY THE ENGINEER OR GOVERNING AGENCY.

NOTE: BOXED ITEMS ARE INCLUDED IN THE COST OF OTHER WORK ITEMS.

### LIST OF HIGHWAY STANDARDS

000001-06	Standard Symbols, Abbreviations, and Patterns
280001-07	Temporary Erosion Control Systems
420001-07	Pavement Joints
420701-02	Pavement Fabric
424011-01	Corner Parallel Curb Ramps for Sidewalks
515001-03	Name Plate for Bridges
602001-02	Catch Basin, Type A
602301-04	Inlet, Type A
602401-04	Manhole, Type A
604001-03	Frame and Lids, Type 1
604036-02	Grate, Type B
606001-05	Concrete Curb Type B and Combination Concrete Curb end Gutter
630001-10	Steel Plate Beam Guardrail
630301-06	Shoulder Widening for Type 1 (Special) Guardrail Terminals
631011-09	Traffic Barrier Terminal, Type 2
631031-12	Traffic Barrier Terminal, Type 6
701011-04	Off-Road, Moving Operations, 2L, 2W, Day only
701301-04	Lane Closure, 2L, 2W, Short Time Operations
701311-03	Lane Closure, 2L, 2W, moving Operations, Day only
701501-06	Urban Lane Closure, 2L, 2W, Undivided
701502-06	Urban Lane Closure, 2L, 2W, with Bidirectional Left Turn Lane
701901-03	Traffic Control Devices
720001-01	Sign Panel Mounting Details
720006-04	Sign Panel Erection Details

### DISTRICT DETAILS

TC-10	Traffic Control and Protection for Side Roads, Intersections And Driveways
TC-17	Traffic Control Details for Freeway Shoulder Closures and Partial Ramp Closures
TC-21	Detour Signing for Closing State Highway
TC_22	Arterial Road Information Sign

THE ILLINOIS DEPARTMENT OF TRANSPORTATION IS NOT THE OWNER OF RECORD FOR THIS BRIDGE. THOSE SEEKING HISTORIC AS-BUILT OR OTHER RECORD PLANS AND DOCUMENTS MUST CONTACT THE OWNER OF RECORD TO MAKE ARRANGEMENTS FOR ACCESS TO THIS INFORMATION.

FILE NAME =	USER NAME = pmagnelli	DESIGNED - GR	REVISED -	<b>STATE OF ILLINOIS DEPARTMENT OF TRANSPORTATION</b>				<b>MARENGO ROAD GENERAL NOTES</b>				F.A.U. RTE	SECTION	COUNTY	TOTAL SHEETS	SHEET NO.
N:\HARVARD\110001\00008\Civil\NOT_110001_00008.DWG		DRAWN - PDR	REVISED -									0006	11-00064-00-BR	MCHENRY	23	2
PLOT SCALE = 20'		CHECKED - JGS	REVISED -									CONTRACT NO. 63899				
PLOT DATE = 1/8/2014		DATE - 01/07/2014	REVISED -									FED. ROAD DIST. NO. ILLINOIS FED. AID PROJECT				
				SCALE: N.T.S.				SHEET NO. OF SHEETS STA. TO STA.								



## SUMMARY OF QUANTITIES

	CODE NO.	ITEM	UNIT	TOTAL QUANTITY	
				0004	0011
	20100210	TREE REMOVAL (OVER 15 UNITS DIAMETER)	UNIT	66	
	20200100	EARTH EXCAVATION	CU YD	56	
	20201200	REMOVAL AND DISPOSAL OF UNSUITABLE MATERIAL	CU YD	20	
	20800150	TRENCH BACKFILL	CU YD	382	
#	21101615	TOPSOIL FURNISH AND PLACE, 4"	SQ YD	428	
	21400100	GRADING AND SHAPING DITCHES	FOOT	117	
# S	25000210	SEEDING, CLASS 2A	ACRE	1	
# S	25000400	NITROGEN FERTILIZER NUTRIENT	POUND	8	
# S	25000500	PHOSPHORUS FERTILIZER NUTRIENT	POUND	8	
# S	25000600	POTASSIUM FERTILIZER NUTRIENT	POUND	8	
S	25100630	EROSION CONTROL BLANKET	SQ YD	428	
S	25200200	SUPPLEMENTAL WATERING	UNIT	1	
	28000305	TEMPORARY DITCH CHECKS	FOOT	20	
	28000400	PERIMETER EROSION BARRIER	FOOT	384	
	28100109	STONE RIPRAP, CLASS A5	SQ YD		110
	28200200	FILTER FABRIC	SQ YD		110
	30300112	AGGREGATE SUBGRADE IMPROVEMENT 12"	SQ YD	75	
	35101200	AGGREGATE BASE COURSE, TYPE A 13"	SQ YD	174	
	40600100	BITUMINOUS MATERIAL (PRIME COAT)	GALLON	127	
	40600300	AGGREGATE (PRIME COAT)	TON	1	
	40600982	HOT-MIX ASPHALT SURFACE REMOVAL - BUTT JOINT	SQ YD	80	
	40603335	HOT-MIX ASPHALT SURFACE COURSE, MIX "D", N50	TON	41	
#	42000416	PORTLAND CEMENT CONCRETE PAVEMENT 9 3/4" (JOINTED)	SQ YD	135	
	42001200	PAVEMENT FABRIC	SQ YD	248	
	42300100	PORTLAND CEMENT CONCRETE DRIVEWAY PAVEMENT, 5 INCH	SQ YD	25	
	42400800	DETECTABLE WARNINGS	SQ FT	20	
	44000100	PAVEMENT REMOVAL	SQ YD	174	
	44000157	HOT-MIX ASPHALT SURFACE REMOVAL, 2"	SQ YD	363	
	44000200	DRIVEWAY PAVEMENT REMOVAL	SQ YD	25	
	48101500	AGGREGATE SHOULDERS, TYPE B 6"	SQ YD	130	
	48203029	HOT-MIX ASPHALT SHOULDERS, 8"	SQ YD	54	
	50100100	REMOVAL OF EXISTING STRUCTURES	EACH		1
	50200100	STRUCTURE EXCAVATION	CU YD		610
	50300225	CONCRETE STRUCTURES	CU YD		29.4
	50800205	REINFORCEMENT BARS, EPOXY COATED	POUND		1580

	CODE NO.	ITEM	UNIT	TOTAL QUANTITY	
				0004	0011
	51500100	NAME PLATES	EACH		1
	54010907	PRECAST CONCRETE BOX CULVERTS 9' X 7'	FOOT		165
	54213657	PRECAST REINFORCED CONCRETE FLARED END SECTIONS 12"	EACH	2	
	550A0050	STORM SEWERS, CLASS A, TYPE 1 12"	FOOT	122	
	55100500	STORM SEWER REMOVAL 12"	FOOT	31	
	59100100	GEOCOMPOSITE WALL DRAIN	SQ YD		30
	60200105	CATCH BASINS, TYPE A, 4'-DIAMETER, TYPE 1 FRAME, OPEN LID	EACH	1	
	60206602	CATCH BASINS, TYPE B, TYPE 8 GRATE	EACH	1	
	60500040	REMOVING MANHOLES	EACH	1	
S	63000001	STEEL PLATE BEAM GUARDRAIL, TYPE A, 6 FOOT POSTS	FOOT	156	
S	63000025	STEEL PLATE BEAM GUARDRAIL, ATTACHED TO STRUCTURES	FOOT		70
S	63100045	TRAFFIC BARRIER TERMINAL, TYPE 2	EACH	1	
S	63100167	TRAFFIC BARRIER TERMINAL, TYPE 1 (SPECIAL) TANGENT	EACH	2	
S	66900200	NON-SPECIAL WASTE DISPOSAL	CU YD	75	
	67100100	MOBILIZATION	L SUM	1	
	70301000	WORK ZONE PAVEMENT MARKING REMOVAL	SQ FT	848	
	70300220	TEMPORARY PAVEMENT MARKING - LINE 4"	FOOT	698	
	70400100	TEMPORARY CONCRETE BARRIER	FOOT	217	
	70600240	IMPACT MITIGATORS, TEMPORARY (NON-REFLECTIVE), TEST LEVEL 2	EACH	1	
S	72000100	SIGN PANEL - TYPE 1	SQ FT	9	
S	72900100	METAL POST - TYPE A	FOOT	10	
S #	78008270	POLYUREA PAVEMENT MARKING TYPE I - LINE 24"	FOOT	13	
S #	78200420	GUARDRAIL MARKERS, TYPE B	EACH	8	
S #	78201000	TERMINAL MARKER - DIRECT APPLIED	EACH	2	
S #	A2001020	TREE, ALER RUBRUM (RED MAPLE), 2 1/2" CALIPER, BALLED AND BURLAPPED	EACH	2	
S #	B2000770	TREE, AMELANCHIER X GRANDIFLORA AUTUMN BRILLIANCE (AUTUMN BRILLIANCE SERVICE BERRY), 2" CALIPER, TREE FORM, BALLED AND BURLAPPED	EACH	3	
#	X0426200	DEWATERING	L SUM	1	
	X4021000	TEMPORARY ACCESS (PRIVATE ENTRANCE)	EACH	1	
#	X5121800	PERMANENT STEEL SHEET PILING	SQ FT	582	
	X5860110	GRANULAR BACKFILL FOR STRUCTURES	CU YD	60	
S	X6026055	SANITARY MANHOLE, SPECIAL	EACH	1	
#	X7010216	TRAFFIC CONTROL AND PROTECTION, (SPECIAL)	L SUM	1	
S #	XX007811	FORCE MAIN, 8"	FOOT	64	
S #	XX007814	FORCE MAIN BYPASS PUMPING	L SUM	1	
S #	XX007842	DIRECTIONAL BORE	FOOT	42	
S	XX008829	REMOVAL AND DISPOSAL OF EXISTING FORCE MAIN	FOOT	102	
	Z0013798	CONSTRUCTION LAYOUT	L SUM	1	

#	INDICATES SPECIAL PROVISION
S	SPECIALTY ITEM

FILE NAME =	USER NAME = pmagnelli	DESIGNED - GR	REVISED -
H:\HARVARD\110001.00000\Civil\00A_110001.00000	PLSHT	DRAWN - PDR	REVISED -
	PLOT SCALE = 28'	CHECKED - JGS	REVISED -
	PLOT DATE = 1/8/2014	DATE - 12/20/13	REVISED -

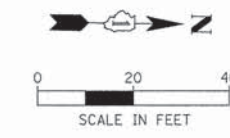
**STATE OF ILLINOIS  
DEPARTMENT OF TRANSPORTATION**

**MARENGO ROAD  
SUMMARY OF QUANTITIES**

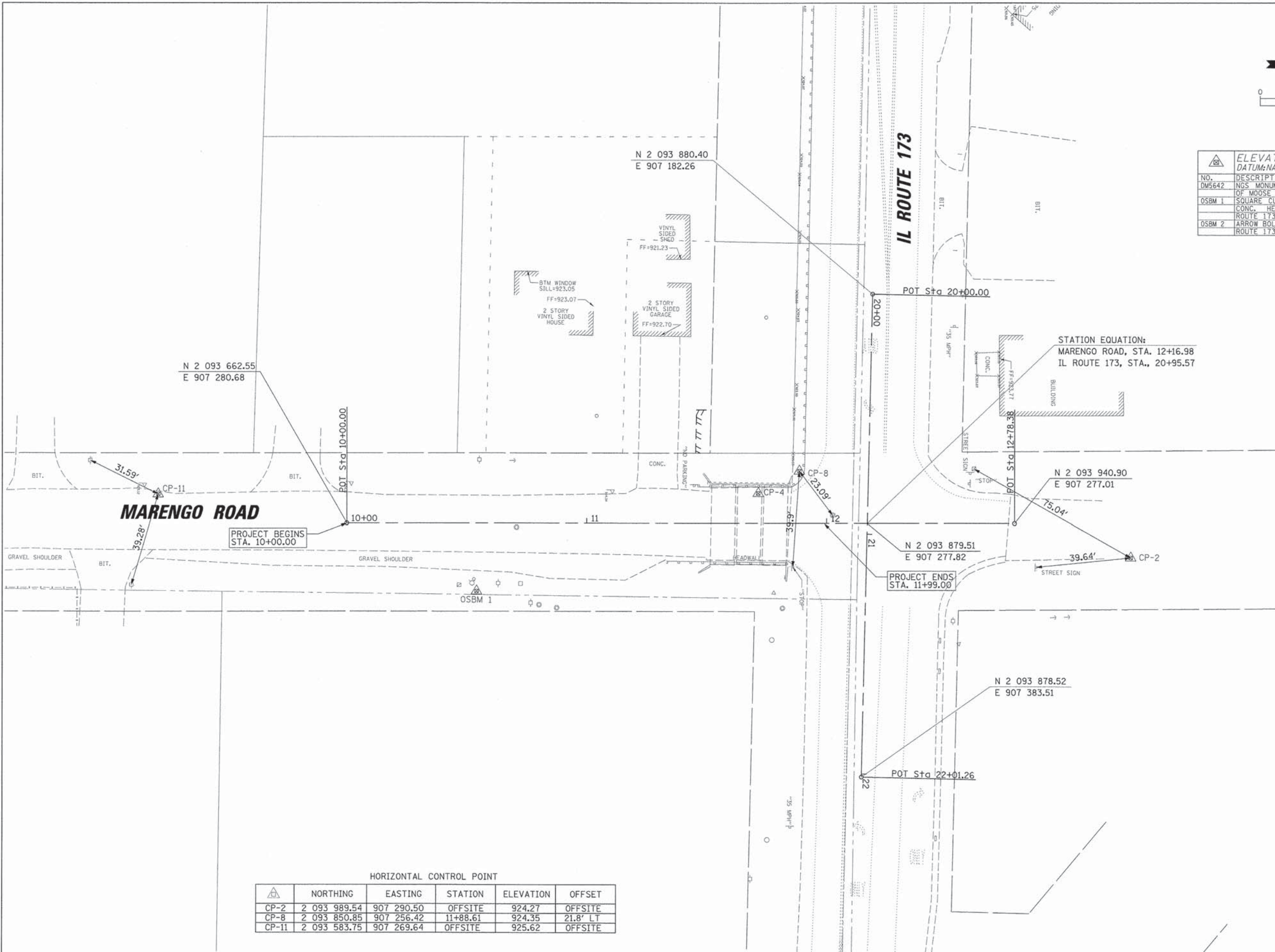
SCALE: N.T.S. SHEET NO. OF SHEETS STA. TO STA.

F.A.U. RTE	SECTION	COUNTY	TOTAL SHEETS	SHEET NO.
0006	11-00064-00-BR	MCHENRY	23	3
CONTRACT NO. 63899				
FED. ROAD DIST. NO. ILLINOIS FED. AID PROJECT				





ELEVATION BENCHMARKS DATUM: NAVD '88		
NO.	DESCRIPTION	ELEV.
DM5642	NGS MONUMENT AT THE WEST PARKING LOT OF MOOSE LODGE	912.57
OSBM 1	SQUARE CUT ON THE NORTHWEST CORNER OF CONC. HEAD WALL OF CREEK UNDER IL ROUTE 173	923.66
OSBM 2	ARROW BOLT OF FIRST HYDRANT SOUTH OF IL ROUTE 173 ON EAST SIDE OF MARENGO RD.	926.42



HORIZONTAL CONTROL POINT					
NO.	NORTHING	EASTING	STATION	ELEVATION	OFFSET
CP-2	2 093 989.54	907 290.50	OFFSITE	924.27	OFFSITE
CP-8	2 093 850.85	907 256.42	11+88.61	924.35	21.8' LT
CP-11	2 093 583.75	907 269.64	OFFSITE	925.62	OFFSITE

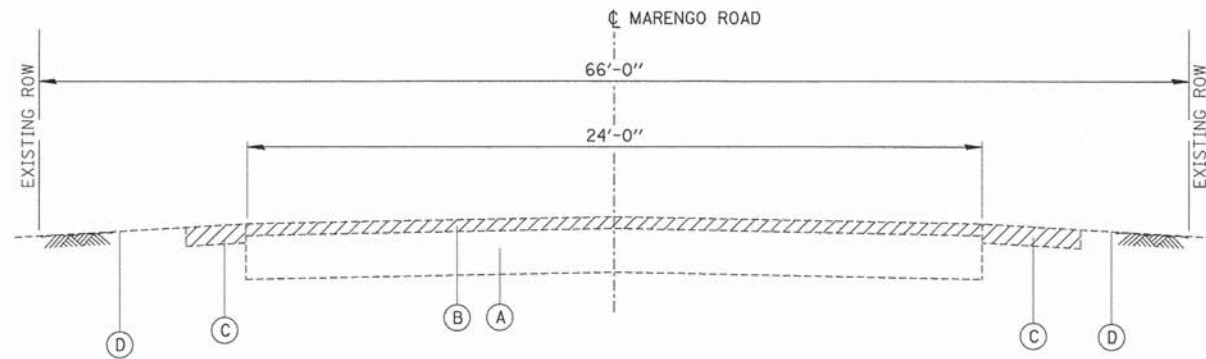
FILE NAME =	USER NAME = prozalan	DESIGNED - GR	REVISED -
RE:\HARVARD\118001\00000\Civil\BNH\118001\00000.SHT		DRAWN - PDR	REVISED -
	PLOT SCALE = 20'	CHECKED - JGS	REVISED -
	PLOT DATE = 12/23/2013	DATE - 12/20/13	REVISED -

**STATE OF ILLINOIS  
DEPARTMENT OF TRANSPORTATION**

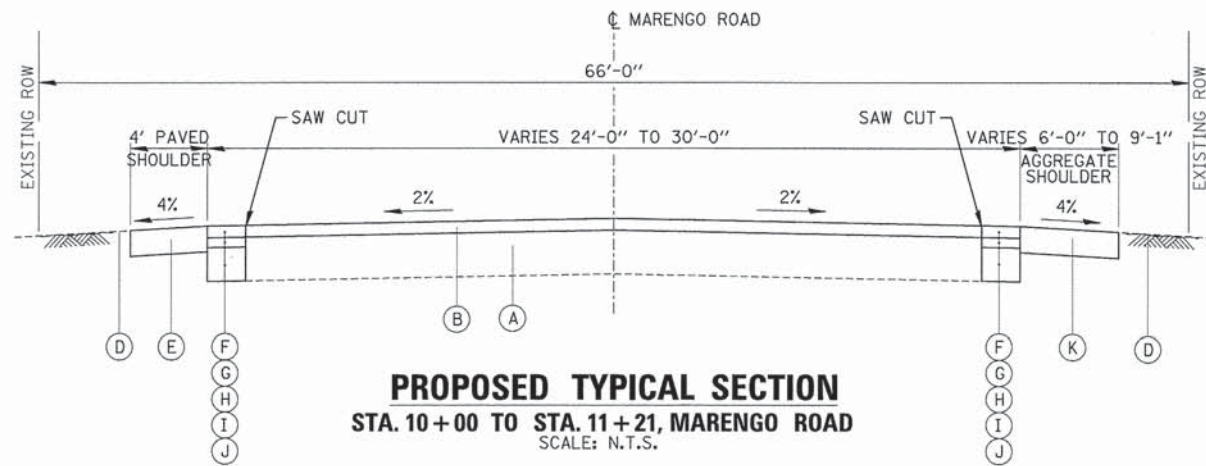
**MARENGO ROAD  
ALIGNMENT, TIES AND BENCHMARKS**

SCALE: N.T.S.    SHEET NO.    OF    SHEETS    STA.    TO    STA.

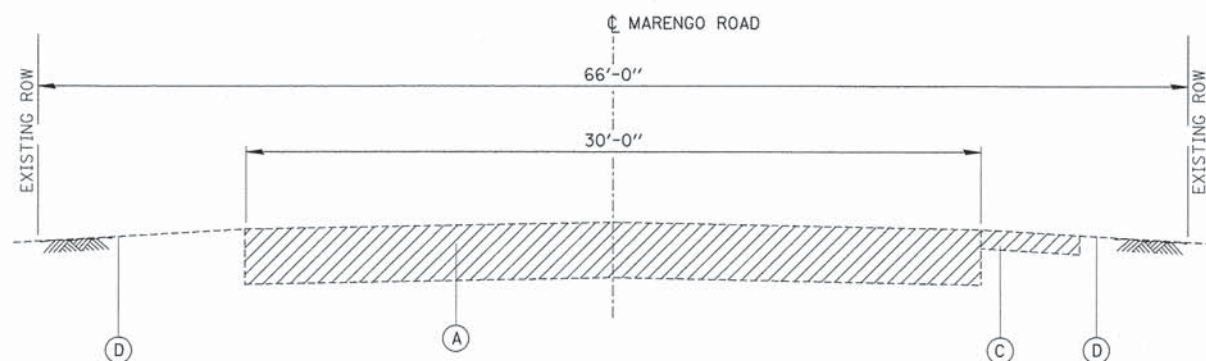
F.A.U. RTE	SECTION	COUNTY	TOTAL SHEETS	SHEET NO.
0006	11-00064-00-BR	MCHENRY	23	4
CONTRACT NO. 63899				
FED. ROAD DIST. NO.    ILLINOIS FED. AID PROJECT				



**EXISTING TYPICAL SECTION**  
**STA. 10+00 TO STA. 11+21, MARENGO ROAD**  
 SCALE: N.T.S.



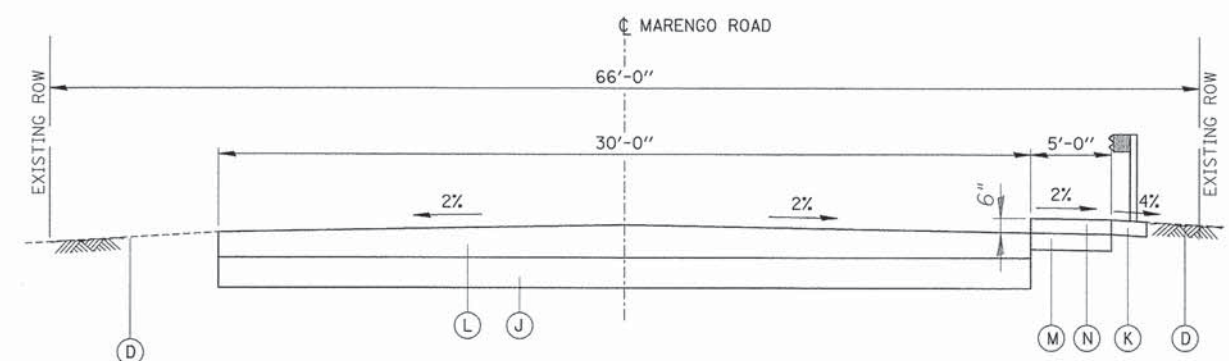
**PROPOSED TYPICAL SECTION**  
**STA. 10+00 TO STA. 11+21, MARENGO ROAD**  
 SCALE: N.T.S.



**EXISTING TYPICAL SECTION**  
**STA. 11+21 TO STA. 11+99, MARENGO ROAD**  
 SCALE: N.T.S.

- LEGEND:**
- REMOVAL ITEMS
  - (A) EXISTING HMA PAVEMENT
  - (B) MILL AND RESURFACE, 2"
  - (C) EXISTING AGGREGATE SHOULDER
  - (D) EXISTING GROUND
  - (E) PROPOSED HMA SHOULDER, 8"
  - (F) PROPOSED HMA SURFACE COURSE, 2"
  - (G) BITUMINOUS MATERIALS (PRIME COAT)
  - (H) PROPOSED HMA LEVELING BINDER, 2"
  - (I) AGGREGATE (PRIME COAT)
  - (J) PROPOSED AGGREGATE BASE COURSE, TYPE B, 13"
  - (K) PROPOSED AGGREGATE SHOULDER, TYPE B, 6"
  - (L) PROPOSED PORTLAND CEMENT CONCRETE PAVEMENT, (JOINTED), VARIABLE DEPTH, 9 3/4" TO 12 3/8"
  - (M) PROPOSED AGGREGATE SUBGRADE IMPROVEMENT, 4"
  - (N) PROPOSED SIDEWALK

HOT-MIX ASPHALT REQUIREMENTS	
MIXTURE TYPE	AIR VOIDS
<b>RESURFACING</b>	
HOT-MIX ASPHALT SURFACE COURSE, MIX "D", N50; (IL 9.5mm); 2"	4.0% @ 50 GYR.
<b>FULL DEPTH PAVEMENT</b>	
HOT-MIX ASPHALT SURFACE COURSE, MIX "D", N50; (IL 9.5mm); 2"	4.0% @ 50 GYR.
LEVELING BINDER (MACHINE METHOD), N50; (IL 9.5mm); 2"	4.0% @ 50 GYR.
<b>SHOULDERS</b>	
HOT-MIX ASPHALT SHOULDER (HMA BINDER IL-19MM)	4.0% @ 50 GYR.
<b>NOTE:</b>	
1. THE UNIT WEIGHT USED TO CALCULATE ALL HOT-MIX ASPHALT SURFACE MATERIAL IS 112 LB/SQ YD PER INCH THICKNESS.	
2. THE "AC TYPE" FOR POLYMERIZED HMA MIXES SHALL BE "SBS/SBR PG 70-22" AND FOR NON-POLYMERIZED HMA THE "AC TYPE" SHALL BE "PG 64-22" UNLESS MODIFIED BY DISTRICT ONE SPECIAL PROVISIONS. FOR PERCENT OF "RAP" SEE DISTRICT ONE SPECIAL PROVISION.	



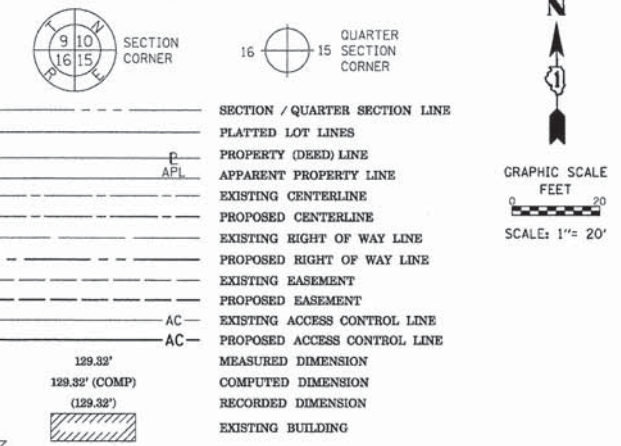
**PROPOSED TYPICAL SECTION**  
**STA. 11+21 TO STA. 11+99, MARENGO ROAD**  
 SCALE: N.T.S.



PART OF THE SOUTHWEST QUARTER OF SECTION 2, TWP. 45 N., R. 5 E. OF THE 3RD. P.M., IN MCHENRY COUNTY, ILLINOIS.

STATION OFFSET TABLE					
BRINK STREET			MARENGO ROAD		
PT#	STATION	OFFSET	STATION	OFFSET	
01	20+49.80	66.26 RT	11+51.78	51.00 LT	
02	20+67.80	66.25 RT	11+51.39	33.00 LT	
03	20+67.94	72.25 RT	11+45.38	33.00 LT	
04	20+49.33	72.26 RT	11+45.78	51.00 LT	

LEGEND



BEARINGS ARE REFERENCED TO THE ILLINOIS STATE PLANE COORDINATE SYSTEM, NAD83 (N.A.D. 83-W-2007 ADJUSTMENT), EAST ZONE.

- IRON PIPE OR ROD FOUND
- ⊕ "MAG" NAIL SET
- + CUT CROSS FOUND OR SET
- 5/8" REBAR SET
- T1 THESE STAKES REFERENCE FOUND OR SET MONUMENTATION. SET 5/8 INCH IRON ROD FLUSH WITH GROUND TO TIE FOUND IRON STAKE IDENTIFIED BY COLORED PLASTIC CAP BEARING SURVEYORS REGISTRATION NUMBER.
- T2
- T3
- BT1 THESE STAKES, IN CULTIVATED AREAS, REFERENCE FOUND OR SET MONUMENTATION. BURIED 5/8 INCH IRON ROD 20 INCHES BELOW GROUND TO TIE FOUND IRON STAKE. IDENTIFIED BY COLORED PLASTIC CAP BEARING SURVEYORS REGISTRATION NUMBER.
- BT2
- BT3
- STAKING OF PROPOSED RIGHT OF WAY. SET DIVISION OF HIGHWAYS SURVEY MARKER TO MONUMENT THE POSITION SHOWN, IDENTIFIED BY INSCRIPTION DATA AND SURVEYORS REGISTRATION NUMBER.
- M STAKING OF PROPOSED RIGHT OF WAY IN CULTIVATED AREAS. BURIED 5/8 INCH METAL ROD 20 INCHES BELOW GROUND TO MARK FUTURE SURVEY MARKER POSITION IDENTIFIED BY COLORED PLASTIC CAP BEARING SURVEYORS REGISTRATION NUMBER.
- ⊙ PERMANENT SURVEY MARKER, I.D.O.T. STANDARD 2135 (TO BE SET BY OTHERS)
- RIGHT OF WAY STAKING PROPOSED TO BE SET

STATE OF ILLINOIS )  
 ) SS  
 COUNTY OF COOK )

THIS IS TO CERTIFY THAT I, KENNETH J. RASMUSSEN, AN ILLINOIS PROFESSIONAL LAND SURVEYOR, (WE, CHRISTOPHER B. BURKE ENGINEERING, LTD., AN ILLINOIS PROFESSIONAL DESIGN FIRM LAND SURVEYING CORPORATION, NUMBER 184-001175,) HAVE SURVEYED THE PLAT OF HIGHWAYS SHOWN HEREON IN SECTION 2, TOWNSHIP 45 NORTH, RANGE 5 EAST OF THE THIRD PRINCIPAL MERIDIAN, MCHENRY COUNTY, THAT THE SURVEY IS TRUE AND COMPLETE AS SHOWN TO THE BEST OF MY KNOWLEDGE AND BELIEF, THAT THE PLAT CORRECTLY REPRESENTS SAID SURVEY, THAT ALL MONUMENTS FOUND AND ESTABLISHED ARE OF PERMANENT QUALITY AND OCCUPY THE POSITIONS SHOWN THEREON AND THAT THE MONUMENTS ARE SUFFICIENT TO ENABLE THE SURVEY TO BE RETRACED, MADE FOR THE DEPARTMENT OF TRANSPORTATION, STATE OF ILLINOIS.

DATED AT ROSEMONT, ILLINOIS THIS \_\_\_\_ DAY OF \_\_\_\_\_ 20\_\_ A.D.

ILLINOIS PROFESSIONAL LAND SURVEYOR NO. 35-3240  
 LICENSE EXPIRATION DATE: 11-30-2014

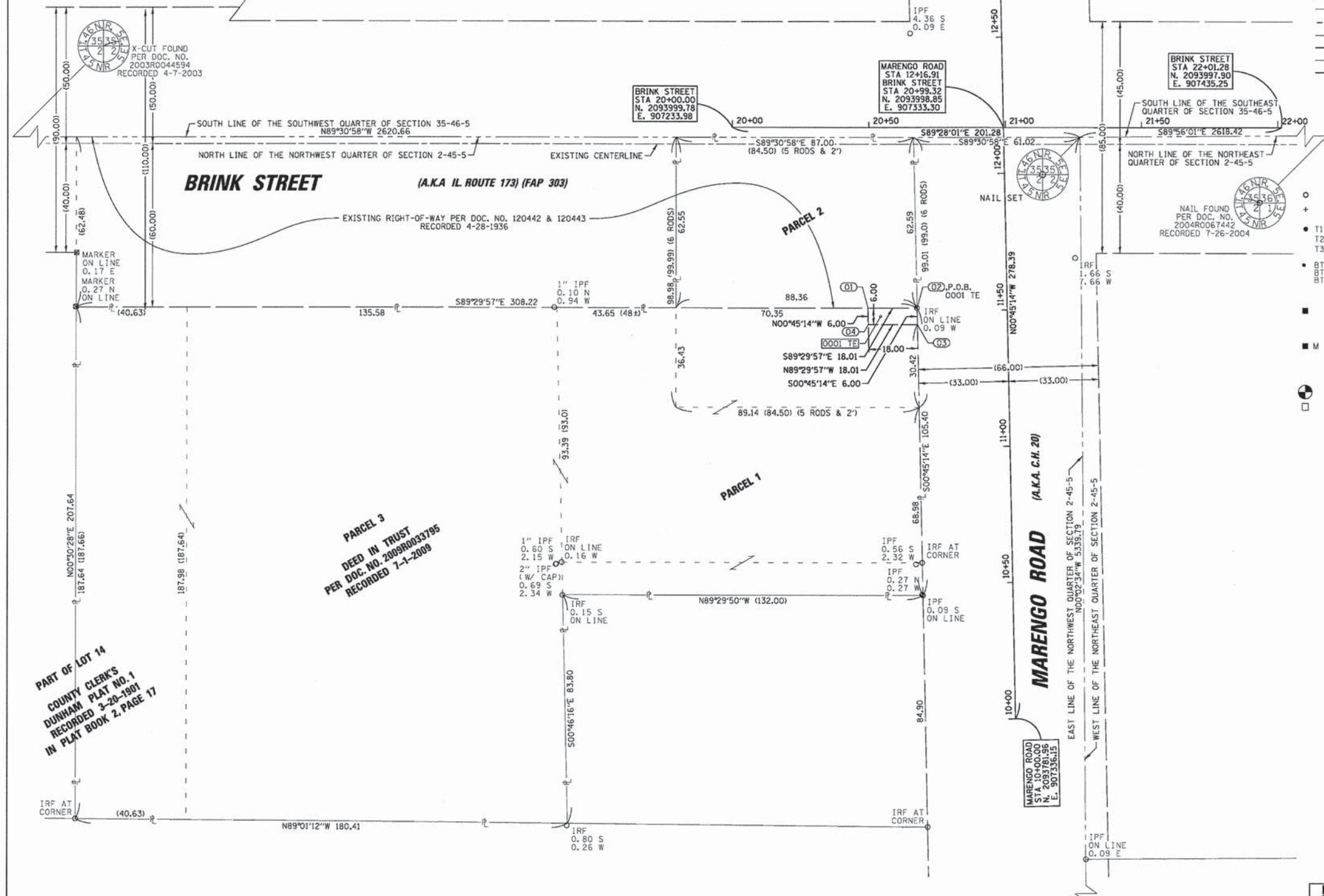
THIS PROFESSIONAL SERVICE CONFORMS TO THE CURRENT ILLINOIS MINIMUM STANDARDS FOR A BOUNDARY SURVEY.

**CB** CHRISTOPHER B. BURKE ENGINEERING, LTD.  
 9575 W. Higgins Road, Suite 600  
 Rosemont, Illinois 60018  
 (847) 823-0500

**PLAT OF HIGHWAYS**  
 STATE OF ILLINOIS  
 DEPARTMENT OF TRANSPORTATION  
 BRINK STREET (A.K.A. IL ROUTE 176) (FAP 303)

LIMITS: 20+00.00 TO 22+01.28 COUNTY: MCHENRY  
 SECTION: 11-00064-00-BR JOB NO.: P-91-457-11  
 STA. 10+00 (MARENGO) TO STA. 12+78.39 (MARENGO)  
 20+00 (BRINK) TO STA. 22+01.28 (BRINK)  
 SCALE: 1"= 20' SHEET 2 OF 2 SHEETS

BUREAU OF LAND ACQUISITION  
 201 WEST CENTER COURT  
 SCHAUMBURG, ILLINOIS 60196



PARCEL NUMBER	TOTAL HOLDINGS ACRES	PART TAKEN ACRES	AREA IN EXISTING R.O.W. ACRES	REMAINDER AREA ACRES	EASEMENT AREA ACRES	SQUARE FEET	PARCEL INDEX NUMBER
0001 TE	1.216	N/A	N/A	1.216	0.002	108	06-02-126-029

NOTE: COORDINATES SHOWN ON THE PLAT HEREON ARE "GROUND VALUES" (UNLESS OTHERWISE NOTED) DERIVED FROM AN AVERAGE COMBINED SCALE FACTOR OF 0.99994298897 BASED ON THE ILLINOIS COORDINATE SYSTEM, EAST ZONE, (N. A. D. 83-W-2007 ADJUSTMENT)

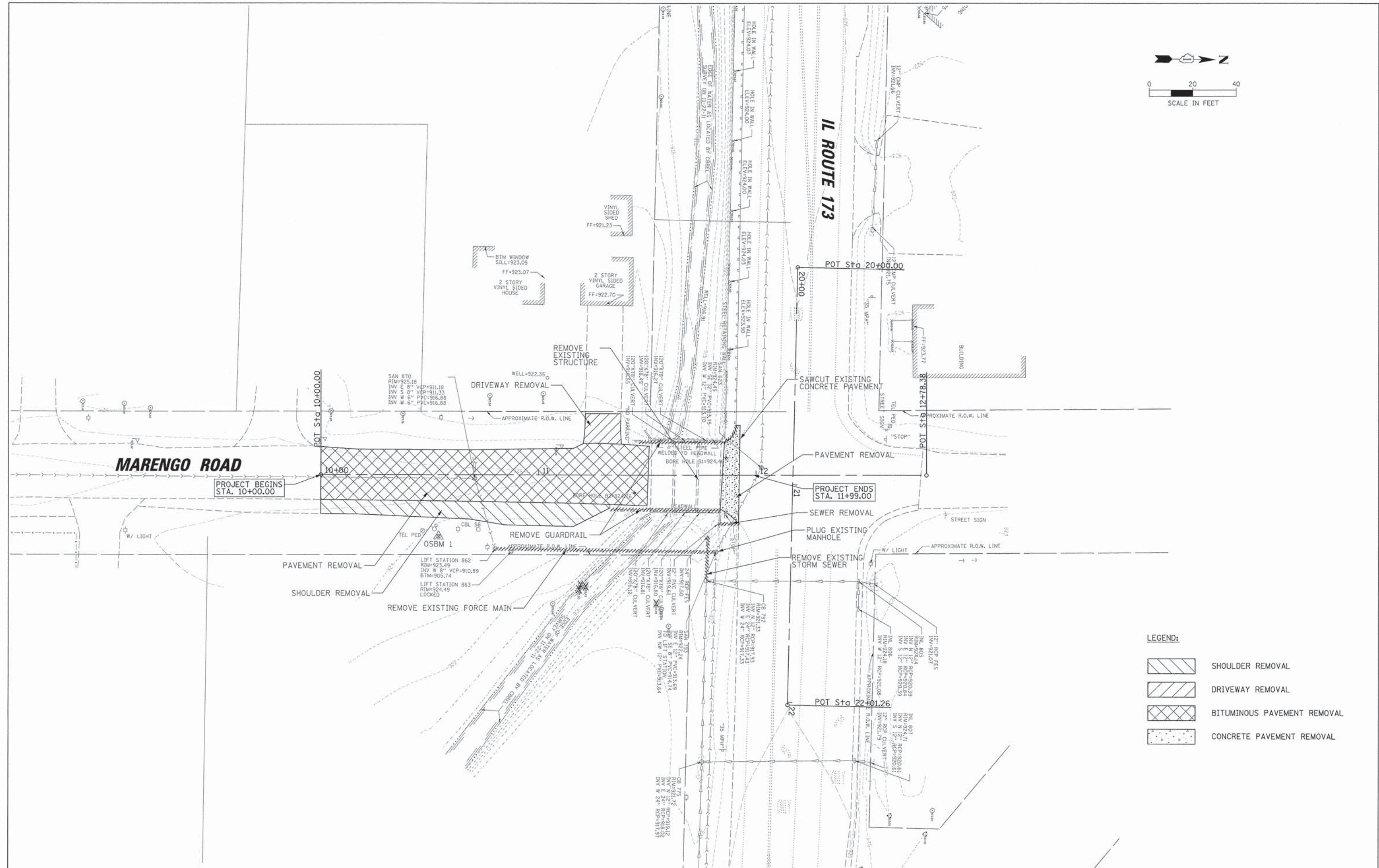
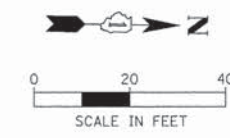
REVISION DATE: REVISION MADE BY:

STATE OF ILLINOIS  
 DEPARTMENT OF TRANSPORTATION

MARENGO ROAD  
 PLAT OF HIGHWAYS

FILE NAME =	USER NAME = prozian	DESIGNED - GR	REVISED -	F.A.U. RTE	SECTION	COUNTY	TOTAL SHEETS	SHEET NO.
N:\HARVARD\110801.000085\Civil\PLT-HGW_110801.00088.SHT		DRAWN - PDR	REVISED -	0006	11-00064-00-BR	MCHENRY	23	6
	PLOT SCALE = 1"	CHECKED - JGS	REVISED -	CONTRACT NO. 63899				
	PLOT DATE = 12/23/2013	DATE - 12/20/13	REVISED -	FED. ROAD DIST. NO. [ILLINOIS] FED. AID PROJECT				





FILE NAME = N:\HARVARD\110001\00009\VC\1\REM_110001_00008.SHT	USER NAME = prazlan	DESIGNED - GR	REVISED -	<b>STATE OF ILLINOIS DEPARTMENT OF TRANSPORTATION</b>	<b>MARENGO ROAD REMOVAL PLAN</b>			F.A.U. RTE	SECTION	COUNTY	TOTAL SHEETS	SHEET NO.		
PLDT SCALE = 20'	CHECKED - JGS	REVISIED -	REVISIED -		SCALE: N.T.S.	SHEET NO.	OF SHEETS	STA.	TO STA.	0006	11-00064-00-BR	MCHENRY	23	7
PLDT DATE = 12/23/2013	DATE - 12/20/13	REVISIED -	REVISIED -		CONTRACT NO. 63899									
FED. ROAD DIST. NO. ILLINOIS FED. AID PROJECT														

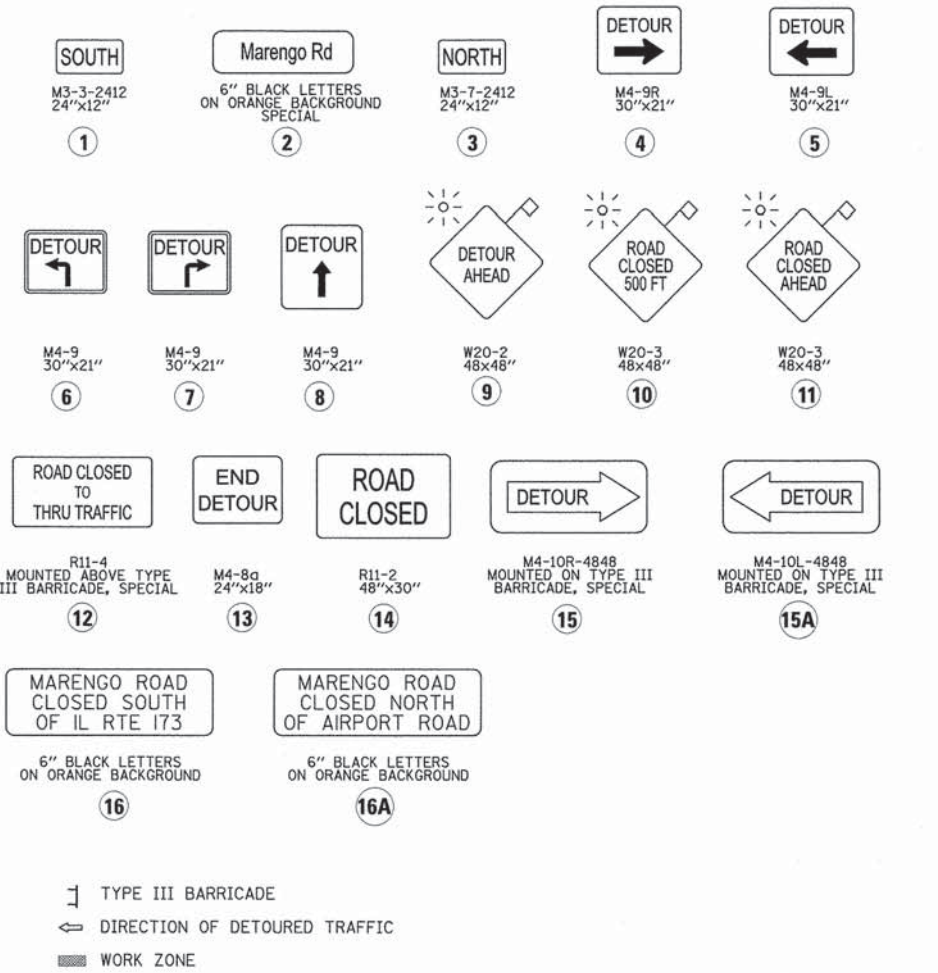








1. ALL SIGNING SHALL BE IN ACCORDANCE WITH THE APPLICABLE PROVISIONS OF THE STATE OF ILLINOIS "STANDARD SPECIFICATIONS FOR ROAD AND BRIDGE CONSTRUCTION ADOPTED JANUARY 1, 2012", "THE QUALITY STANDARD FOR WORK ZONE TRAFFIC CONTROL DEVICES ADOPTED 2010", THE DETAILS IN THESE PLANS, THE LATEST EDITION OF THE STATE OF ILLINOIS "MANUAL OF UNIFORM TRAFFIC CONTROL DEVICES", THE SPECIAL PROVISIONS FOR TRAFFIC CONTROL AND PROTECTION.
2. THE ENGINEER SHALL BE NOTIFIED IN WRITING AT LEAST THREE WEEKS PRIOR TO THE DAY THE DETOUR IS TO BE IN EFFECT. THE ENGINEER SHALL DETERMINE THE HOUR OF CLOSURE. THE ENGINEER WILL CONTACT THE APPROPRIATE LOCAL AGENCIES AND INTERESTED PARTIES.
3. THE CONTRACTOR SHALL SUPPLY TO THE ENGINEER THE NAMES AND TELEPHONE NUMBERS OF HIS REPRESENTATIVES ON THE CONSTRUCTION SITE AND HIS REPRESENTATIVE RESPONSIBLE FOR THE DETOUR SIGNING PRIOR TO THE START OF THE WORK. THE CITY OF HARVARD REPRESENTATIVE FOR THIS DETOUR IS: MR. JIM KRUCKENBURG, DIRECTOR OF PUBLIC WORKS, 815-943-0301.
4. IF REQUESTED BY THE CONTRACTOR IN WRITING AT LEAST THREE WEEKS PRIOR TO THE DAY THE DETOUR IS TO BE IN EFFECT, THE ENGINEER WILL FIELD LOCATE THE POSITIONS OF ANY SIGNS.
5. LONGITUDINAL DIMENSIONS SHOWN ON THESE PLANS MAY BE ADJUSTED TO FIT FIELD CONDITIONS, WITH THE APPROVAL OF THE ENGINEER.
6. THE ROAD SHALL NOT BE CLOSED UNTIL ALL SIGNING IS ERECTED IN ACCORDANCE WITH THE DETOUR PLAN AND INSPECTED AND APPROVED BY THE ENGINEER.
7. THE CONTRACTOR SHALL BE RESPONSIBLE FOR ENSURING THAT ALL BARRICADES, SIGNS, LIGHTS, AND OTHER DEVICES INSTALLED BY HIM ARE IN PLACE AND OPERATING 24 HOURS EACH DAY INCLUDING SUNDAYS AND HOLIDAYS DURING THE TIME THE DETOUR IS IN EFFECT.
8. THE TRAFFIC CONTROL SHOWN ON THE DETOUR PLAN IS THE MINIMUM NECESSARY TO ENSURE THIS ROAD CLOSURE. THE CONTRACTOR SHALL MAKE ALL CHANGES IN TRAFFIC CONTROL THAT IS DEEMED NECESSARY BY THE ENGINEER. ADDITIONS AND DELETIONS OF TRAFFIC CONTROL FOR THIS DETOUR SHALL BE CONSIDERED INCIDENTAL TO THE PAY ITEM "TRAFFIC CONTROL AND PROTECTION".
9. ALL EXISTING SIGNING THAT IS NOT APPLICABLE WHILE THE DETOUR IS IN EFFECT SHALL BE COMPLETELY COVERED BY THE CONTRACTOR, IN A MANNER APPROVED BY THE ENGINEER.
10. ALL DETOUR SIGNING SHALL BE POST MOUNTED IF THE ROAD CLOSURE IS TO EXCEED FOUR (4) CALENDAR DAYS.
11. ALL DETOUR SIGNING EXCEPT REGULATORY SIGNS SHALL HAVE BLACK LEGENDS ON FLUORESCENT ORANGE SHEETING AND STANDARD BLACK BORDERS. THE FLUORESCENT ORANGE REFLECTIVE SHEETING SHALL MEET THE REQUIREMENTS OF SECTION 1106 OF THE STANDARD SPECIFICATIONS. ALL DETOUR SIGNING SHALL BE NEW OR LIKE NEW CONDITION OF THE SIGNS. THE ENGINEER SHALL BE THE SOLE JUDGE OF THE CONDITION OF THE SIGNS.
12. THE SIZES OF ALL SIGNS NOT SPECIFIED IN THESE PLANS SHALL BE AS REQUIRED BY THE ILLINOIS MANUAL ON UNIFORM TRAFFIC CONTROL DEVICES.
13. AS A MINIMUM, ALL AMBER FLASHING LIGHTS THAT ARE REQUIRED FOR THIS DETOUR SHALL MEET THE REQUIREMENTS FOR TYPE A-LOW INTENSITY FLASHING LIGHTS IN ARTICLE 1084.01 OF THE STANDARD SPECIFICATIONS. ALL LIGHTS SHALL OPERATE DURING THE HOURS OF DARKNESS. ONLY LIGHTS THAT HAVE BEEN APPROVED BY THE ILLINOIS DEPARTMENT OF TRANSPORTATION SHALL BE USED.
14. WHEN REQUIRED THE MINIMUM DIMENSIONS OF THE ORANGE WARNING FLAGS SHOWN IN THESE PLANS ARE 18" X 18".
15. ALL BARRICADES SHALL HAVE REFLECTORIZED STRIPING ON BOTH SIDES OF THE BARRICADES. THE TYPE III BARRICADES USED AT THE POINT OF CLOSURE TO THRU TRAFFIC SHALL NOT EXCEED 8 FEET IN WIDTH EACH, FOR A SINGLE APPROACH LANE.
16. THE "ROAD CLOSED" (R11-2), THE "ROAD CLOSED THRU TRAFFIC" (R11-4) SIGNS SHALL BE MOUNTED ABOVE THE TOP OF THE BARRICADE. ALL TYPE III BARRICADES SHALL HAVE TWO (2) AMBER TYPE A-LOW INTENSITY FLASHING LIGHTS SPACED NEAR THE CENTERLINE OF THE SUPPORTS.
17. DURING NON-WORKING HOURS AT THE POINT OF ROAD CLOSURE TO ALL TRAFFIC THE CONTRACTOR SHALL PROVIDE A MEANS TO RESTRAIN THE BARRICADES FROM EASY MOVEMENT BY VANDALS. THE CHOSEN METHOD SHALL BE APPROVED BY THE ENGINEER.
18. CONSTRUCTION EQUIPMENT SHALL NOT BE PARKED WITHIN 25 FT BEHIND THE TYPE III BARRICADES. IN ANY EVENT ARTICLE 701.04 OF THE STANDARD SPECIFICATIONS SHALL APPLY.
19. THE CONTRACTOR SHALL BE RESPONSIBLE FOR MAINTAINING THE VISIBILITY OF ALL DETOUR AND CONSTRUCTION SIGNING, INCLUDING BRUSHING BACK VEGETATION IF DEEMED NECESSARY BY THE ENGINEER.
20. THE ENGINEER SHALL BE NOTIFIED AT LEAST TWO (2) HOURS BEFORE THE ROAD IS TO BE OPENED TO TRAFFIC. THE ENGINEER WILL CONTACT THE APPROPRIATE LOCAL AGENCIES AND INTERESTED PARTIES.



FILE NAME =	USER NAME = pmagnelli	DESIGNED - GR	REVISED -
N:\HARVARD\110001.00005\CVI\1\DOT_110001.00005.DWG		DRAWN - PDR	REVISED -
	PLOT SCALE = 480'	CHECKED - JGS	REVISED -
	PLOT DATE = 1/8/2014	DATE - 01/07/2014	REVISED -

**STATE OF ILLINOIS  
DEPARTMENT OF TRANSPORTATION**

**MARENGO ROAD  
DETOUR NOTES AND PLAN**

SCALE: N.T.S. SHEET NO. OF SHEETS STA. TO STA.

F.A.U. RTE	SECTION	COUNTY	TOTAL SHEETS	SHEET NO.
0006	11-00064-00-BR	MCHENRY	23	9
CONTRACT NO. 63899		ILLINOIS FED. AID PROJECT		



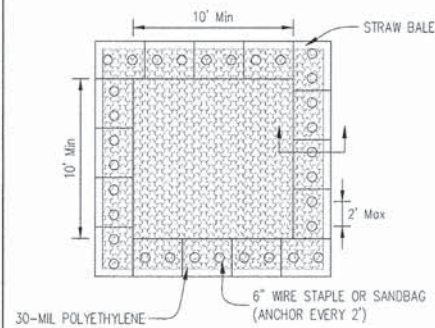




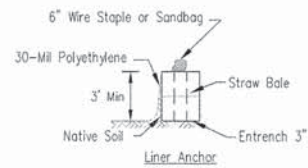




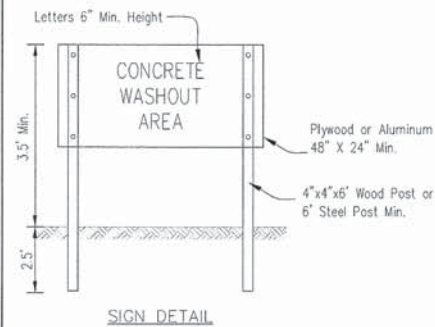
AUTOCAD2006



PLAN VIEW



STRAW BALE ANCHOR SECTIONS



SIGN DETAIL

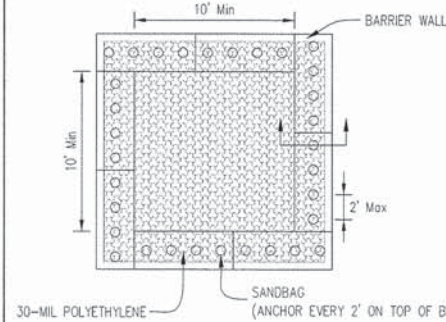
NOTES:

- Maintaining temporary concrete washout facilities shall include removing and disposing of hardened concrete and/or slurry and returning the facilities to a functional condition.
- Facility shall be cleaned or reconstructed in a new area once washout becomes two-thirds full.
- Each straw bale is to be staked in place using (2) 2"x2"x4" wooden stakes.

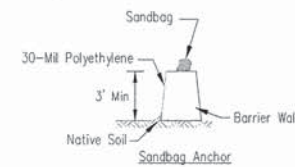
TEMPORARY CONCRETE WASHOUT FACILITY - STRAW BALE

Designed	GR	Date	
Drawn	J. Johnson	Date	12/20
Checked			
Approved			

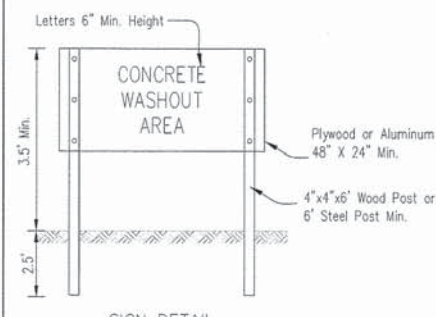
AUTOCAD2006



PLAN VIEW



BARRIER WALL ANCHOR SECTION



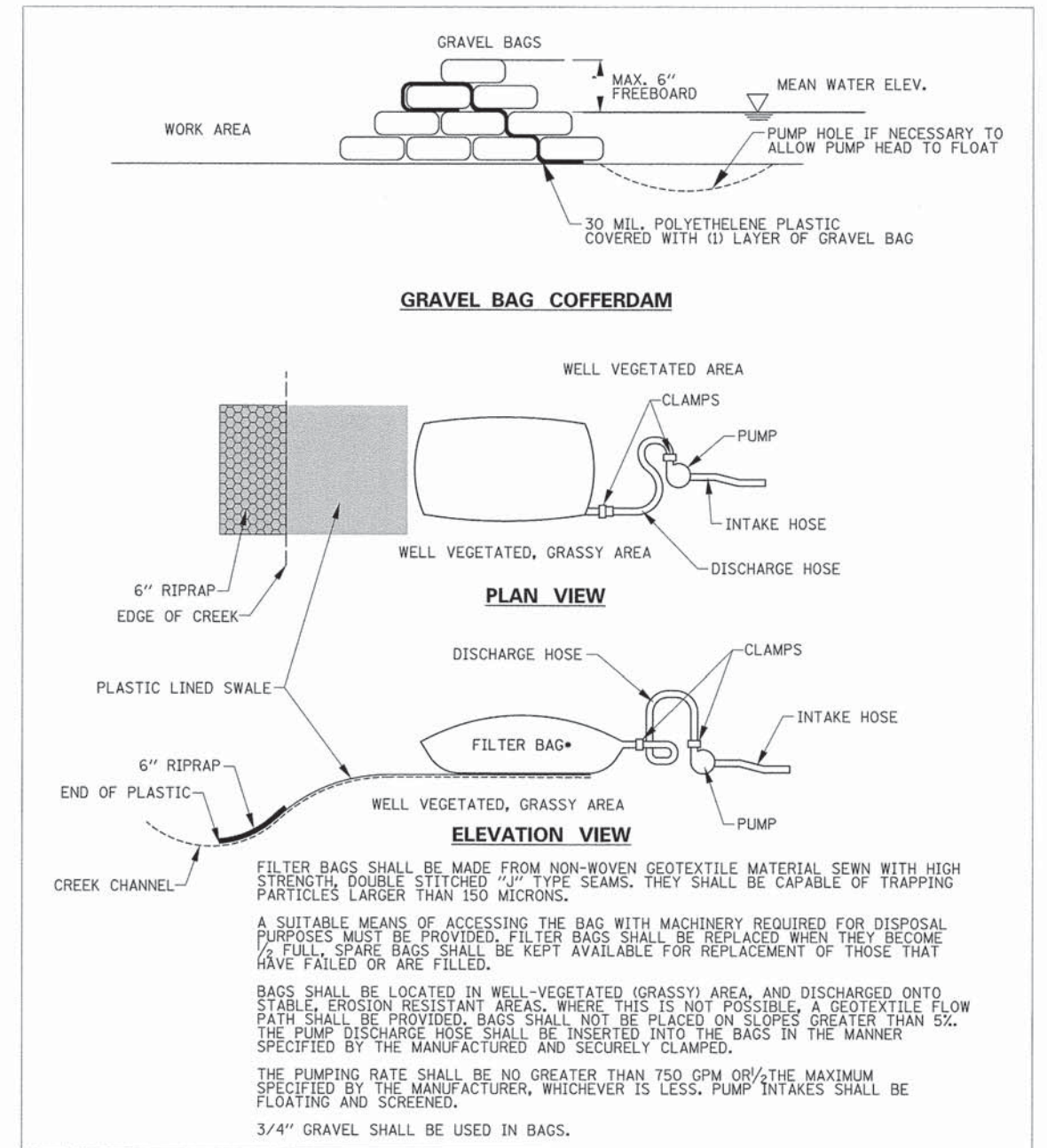
SIGN DETAIL

NOTES:

- Maintaining temporary concrete washout facilities shall include removing and disposing of hardened concrete and/or slurry and returning the facilities to a functional condition.
- Facility shall be cleaned or reconstructed in a new area once washout becomes two-thirds full.

TEMPORARY CONCRETE WASHOUT FACILITY - BARRIER WALL

Designed		Date	
Drawn	J. Johnson	Date	12/20
Checked			
Approved			



GRAVEL BAG COFFERDAM

PLAN VIEW

ELEVATION VIEW

FILTER BAGS SHALL BE MADE FROM NON-WOVEN GEOTEXTILE MATERIAL SEWN WITH HIGH STRENGTH, DOUBLE STITCHED "J" TYPE SEAMS. THEY SHALL BE CAPABLE OF TRAPPING PARTICLES LARGER THAN 150 MICRONS.

A SUITABLE MEANS OF ACCESSING THE BAG WITH MACHINERY REQUIRED FOR DISPOSAL PURPOSES MUST BE PROVIDED. FILTER BAGS SHALL BE REPLACED WHEN THEY BECOME 1/2 FULL, SPARE BAGS SHALL BE KEPT AVAILABLE FOR REPLACEMENT OF THOSE THAT HAVE FAILED OR ARE FILLED.

BAGS SHALL BE LOCATED IN WELL-VEGETATED (GRASSY) AREA, AND DISCHARGED ONTO STABLE, EROSION RESISTANT AREAS. WHERE THIS IS NOT POSSIBLE, A GEOTEXTILE FLOW PATH SHALL BE PROVIDED. BAGS SHALL NOT BE PLACED ON SLOPES GREATER THAN 5%. THE PUMP DISCHARGE HOSE SHALL BE INSERTED INTO THE BAGS IN THE MANNER SPECIFIED BY THE MANUFACTURER AND SECURELY CLAMPED.

THE PUMPING RATE SHALL BE NO GREATER THAN 750 GPM OR 1/2 THE MAXIMUM SPECIFIED BY THE MANUFACTURER, WHICHEVER IS LESS. PUMP INTAKES SHALL BE FLOATING AND SCREENED.

3/4" GRAVEL SHALL BE USED IN BAGS.

FILE NAME =	USER NAME = prozalan	DESIGNED - GR	REVISED -
16:\HARVARD\110001\00008\Civil\NECP_110001\00008	2.5HT	DRAWN - PDR	REVISED -
	PLOT SCALE = 20'	CHECKED - JGS	REVISED -
	PLOT DATE = 12/23/2013	DATE - 12/20/13	REVISED -

STATE OF ILLINOIS  
DEPARTMENT OF TRANSPORTATION

MARENGO ROAD  
EROSION AND SEDIMENT CONTROL DETAILS

SCALE: N.T.S. SHEET NO. OF SHEETS STA. TO STA.

F.A.U. RTE	SECTION	COUNTY	TOTAL SHEETS	SHEET NO.
0006	11-00064-00-BR	MCHENRY	23	12
CONTRACT NO. 63899				
FED. ROAD DIST. NO. ILLINOIS FED. AID PROJECT				



**GENERAL NOTES**

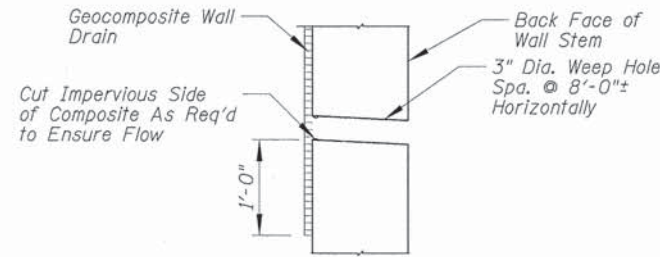
- All work and materials shall be in accordance with the Illinois Department of Transportation (IDOT) Standard Specifications for Road and Bridge Construction adopted January 1, 2012 and latest supplemental specifications and recurring special provisions, unless noted otherwise.
- The Contractor shall verify all dimensions in the field prior to commencing work. The engineer shall be notified of any discrepancies which may exist, prior to proceeding with the work.
- Any information concerning type or location of underground and other utilities is not guaranteed to be accurate or all inclusive. The Contractor is responsible for making his own determinations as to the type and location of the utilities as may be necessary to avoid damage thereto. Contractor shall call J.U.L.I.E. prior to excavation.
- The contractor is responsible for design, installation and removal of all excavation support systems.
- The excavation and work area shall be properly drained at all times during construction. All wet, loose, frozen or other unsuitable material shall be removed prior to placement of concrete or compacted backfill. The cost of any pumping required shall be included in the cost of Precast Concrete Box Culverts.
- Foundation design is based on soil information provided by TSC, Report L-77.765. Contractor shall have a geotechnical engineer to field verify the allowable bearing capacity under the box culvert and wingwall exceeds 3000 psf. Cost included in "Precast Concrete Box Culverts".
- It shall be the responsibility of the Contractor to divert the stream flow during construction in order to keep the construction areas free of water. The method of water diversion shall be subject to the approval of the Engineer and cost shall be included with "Precast Concrete Box Culvert".
- Layout of slope protection system may be varied in the field to suit ground conditions as directed by the Engineer.
- For backfilling and embankment, see Standard Specifications.
- Use of CCDD fill operations: per Public Act 97-0137, if the Contractor chooses to dispose of uncontaminated soil or uncontaminated soil mixed with clean construction and demolition debris (CCDD) at a CCDD fill operation, it shall be the Contractor's responsibility to perform all necessary field and laboratory analysis and to obtain the Licensed Professional Engineer's certification required as per Public Act 96-1416 to use the site. This work shall be considered incidental to Earth Excavation or related excavation or removal item, and no additional compensation will be provided.

**CAST-IN-PLACE CONCRETE NOTES**

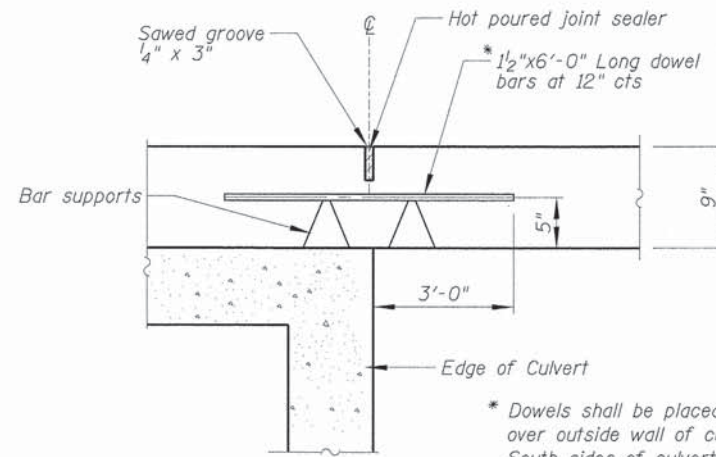
- All cast-in-place concrete work shall be in accordance with section 503 of the Illinois Department of Transportation (IDOT) Standard Specifications for Road and Bridge Construction adopted January 1, 2012, supplemental specifications and recurring special provisions and as noted below.
- Reinforcement bars shall conform to the requirements of ASTM A 706 GR60.
- Bars indicated thus 12 x 4-#5 etc. indicates 12 lines of bars with 4 lengths per line.
- Exposed edges of cast-in-place concrete shall be beveled 3/4".
- All construction joints shall be bonded.
- Concrete mix designs shall be submitted to the Engineer for review and approval a minimum of 7 days prior to ordering or placing concrete.
- Cover from the face of concrete to face of reinforcement bars shall be 3" for surfaces cast against earth and 2" for all other surfaces unless otherwise noted.
- Contractor shall coordinate with Precast Box Culvert Manufacturer to account for possible creep between box segments. Creep shall be determined prior to constructing second cast-in-place end section.

**PRECAST CONCRETE BOX CULVERT**

- All precast concrete box culvert work shall be in accordance with sections 504 and 540 of the Illinois Department of Transportation Standard Specifications for Road and Bridge Construction adopted January 1, 2012, supplemental specifications and recurring special provisions and as noted below.
- The precast concrete box culvert is a performance based system. The contractor shall be responsible for providing the design, engineering, fabrication and installation of the precast concrete box culvert. The contractor shall submit to the engineer calculations and shop drawings sealed by a Structural Engineer licensed in the state of Illinois for review prior to fabricating the precast concrete box culvert. Precast concrete box culverts shall conform to the requirements of ASTM C1577. The shop drawings shall include the ferrule loop locations and details.
- Ferrule loop inserts shall be installed at the locations shown on the drawings by the precast concrete box culvert manufacturer. Install the ferrule loop inserts per the ferrule loop manufacturer's requirements. The ferrule loop insert shall be f-64, 1/2" x 4 1/8", NC threaded inserts with an allowable tension load of 3000 lbs and allowable shear load of 1800 lbs by Dayton/Richmond concrete accessories, phone number - (800) 745-3700, website - www.daytonrichmond.com or approved equal. Cost of ferrule loop inserts are included in Precast Box Culverts.

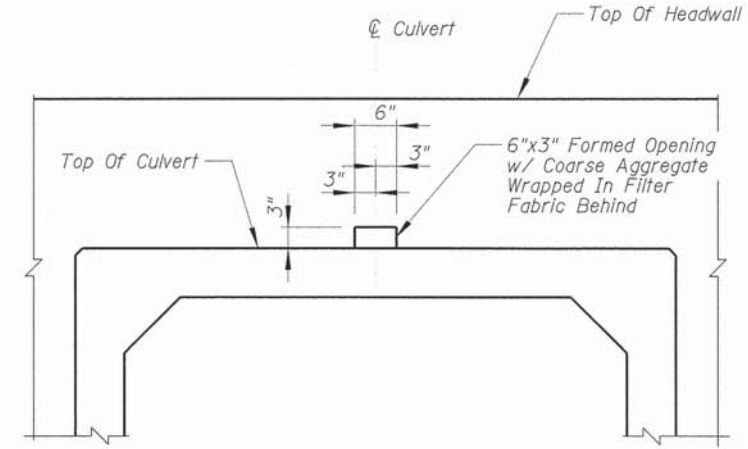


**WEEP HOLE DRAIN DETAIL**

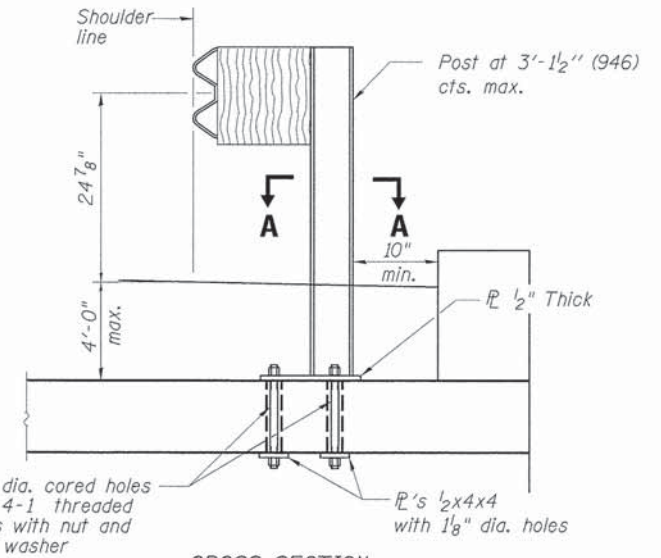


**TRANSVERSE CONSTRUCTION JOINT**

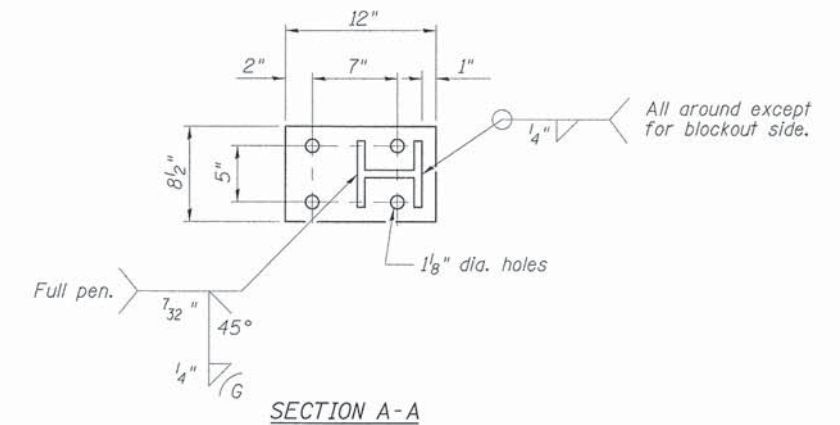
\* Dowels shall be placed in pavement centered over outside wall of culvert on both North and South sides of culvert. Cost of dowels shall be included in "Portland Cement Concrete Pavement (Jointed) Variable Depth".



**TYPICAL FORMED DRAIN DETAIL**



**CROSS SECTION**  
(Maximum Post Spacing 6'-3")



**SECTION A-A**

**STEEL PLATE BEAM GUARDRAIL ATTACHED TO STRUCTURES**

For Details of Guardrail Elements Not Shown. See Standard 630101

**INDEX OF SHEETS**

- S-1 General Notes and Details
- S-2 General Plan and Elevation
- S-3 Culvert Section and Upstream Elevation
- S-4 Upstream Details
- S-5 Downstream Elevation and Details
- S-6 Boring Logs

THE CONTRACTOR SHALL BE SOLELY RESPONSIBLE FOR JOB SITE SAFETY AS WELL AS SUPERVISION/DIRECTION AND MEANS/METHODS OF CONSTRUCTION

FILE NAME =	USER NAME = prazolan	DESIGNED - GR	REVISED -	<b>STATE OF ILLINOIS DEPARTMENT OF TRANSPORTATION</b>	<b>MARENGO ROAD GENERAL NOTES AND DETAILS</b>		F.A.U. RTE	SECTION	COUNTY	TOTAL SHEETS	SHEET NO.
16:\HARVARD\110001\00008\Struct\Notes\110001_0008.sht		DRAWN - PDR	REVISED -		0006	11-00064-00-BR	MCHENRY	23	13		
PLOT SCALE = 1"		CHECKED - JGS	REVISED -		CONTRACT NO. 63899						
PLOT DATE = 12/23/2013		DATE - 12/20/13	REVISED -		FED. ROAD DIST. NO. ILLINOIS FED. AID PROJECT						
				SCALE: N.T.S.	SHEET NO. S-1 OF S-6 SHEETS	STA.	TO STA.				



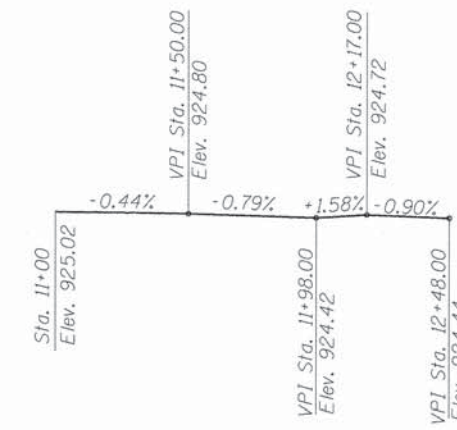
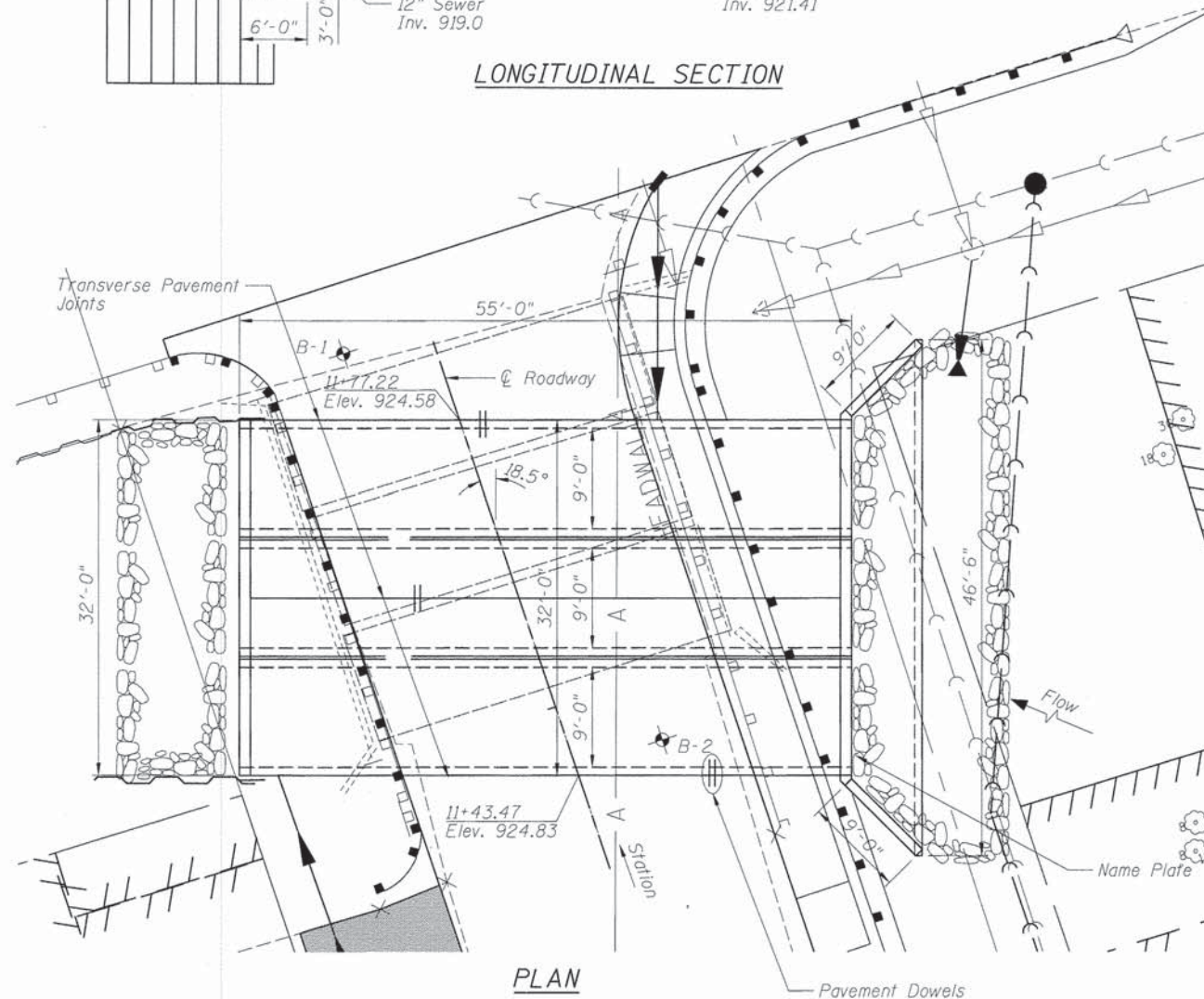
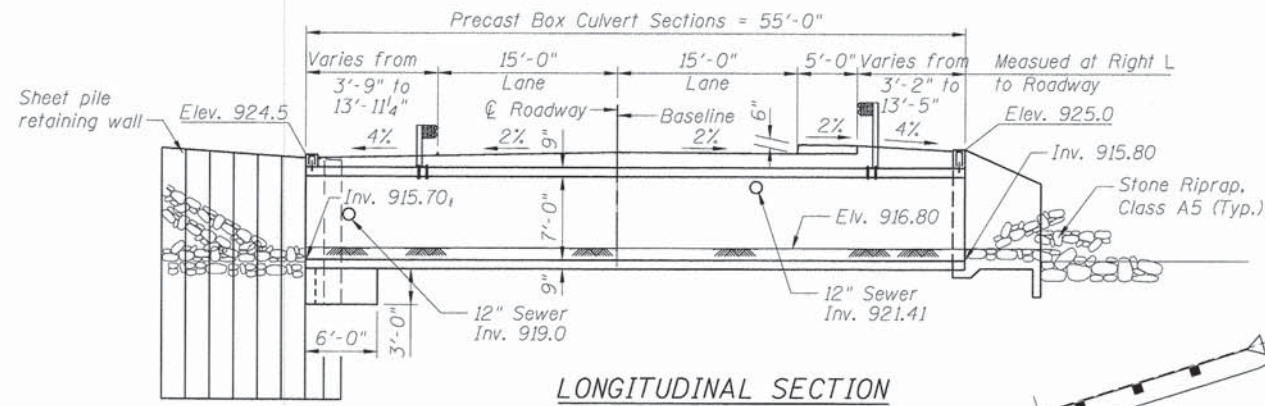
Benchmark: OSBM 1 - Square cut on the northwest corner of the concrete headwall of creek under Illinois Route 173. Elev. 923.66.

Existing structure: S.N. 056-5002 was constructed in 1933 and consists of 3-6.5'H x 10'W cast-in-place culverts. There are cast-in-place wingwalls on all four corners. Guardrail was added in 1988. Heavy silt limits the flow to only the southern most cell. Existing structure will be completely removed during full road closure.

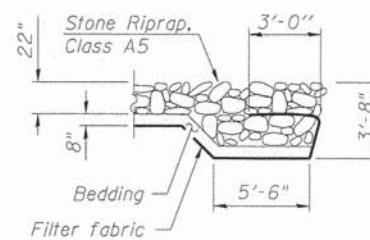
**TOTAL BILL OF MATERIAL**

ITEM	UNIT	TOTAL
28100109	Stone Riprap, Class A5	Sq Yd 110
28200200	Filter Fabric	Sq Yd 110
50100100	Removal of Existing Structure	Each 1
50200100	Structure Excavation	Cu Yd 610
50300225	Concrete Structures	Cu Yd 29.4
50800205	Reinforcement Bars, Epoxy Coated	Pound 1580
51500100	Name Plates	Each 1
54011007	Precast Concrete Box Culverts 9' x 7'	Foot 165
59100100	Geocomposite Wall Drain	Sq Yd 30
63000025	Steel Plate Beam Guardrail, Attached to Structures	Foot 70
* X5121800	Permanent Steel Sheet Piling	Sq Ft 582
* X5860110	Granular Backfill for Structures	Cu Yd 60

\* See Special Provisions



PROFILE GRADE



SECTION B-B

MOKELER CREEK  
BUILT BY  
McHENRY COUNTY  
SEC 11-00064-00-BR  
F.A. 0006 STA. 11+60.35  
STRUCTURE NO. 056-5001

NAME PLATE  
See Std. 515001

**LOADING HL-93**  
Allow 50#/sq. ft. for future wearing surface.

**DESIGN SPECIFICATIONS**  
2012 AASHTO LRFD Bridge Design Specifications  
and Current Intrims.

**DESIGN STRESSES**  
**FIELD UNITS**

f'c = 3,500 psi  
fy = 60,000 psi (Reinforcement)  
fy = 50,000 psi (Permanent Sheet Piling)

**PRECAST UNITS**

f'c = 5,000 psi  
fy = 60,000 psi (Reinforcement)

**WATERWAY INFORMATION**

Drainage Area = ±4.89 sq. mi Low Grade Elev. 924.42 @ Sta. 11+98.00								
Flood	Freq. Yr.	Q C.F.S.	Opening Sq. Ft.	Nat. H.W.E.	Head - Ft. Exist. Prop.	Headwater El. Exist. Prop.	Headwater El. Exist. Prop.	Headwater El. Prop.
Design	10	490	168.1	141.2	922.29	0.00	0.00	922.29
Base	30	656	182.4	148.5	922.80	0.00	0.00	922.80
Overtopping	100	850	192.8	159.8	923.35	0.03	0.00	923.38
Max. Calc.	500	1130	195.0	162.0	924.22	0.05	0.00	924.27

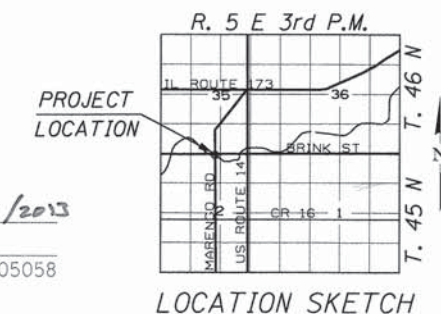
**DESIGN SCOUR ELEVATION TABLE**

Design Scour Elevation (ft.)	Upstream	Downstream
	913.8'	913.7'

I Certify That To The Best Of My Knowledge, Information And Belief, This Bridge Design Is Structurally Adequate For The Design Loading Shown On The Plans. The Design Is An Economical One For The Syle Of Structure And Complies With Requirements Of The Current "AASHTO Standard Specification For Highway And Bridges".



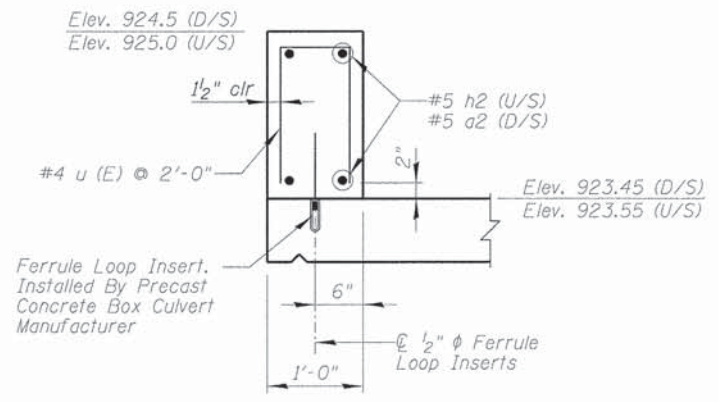
*Majid Mobasser* 12/5/2013  
**MAJID MOBASSERI**  
ILLINOIS REGISTRATION No. 081-005058  
EXPIRATION DATE: 11/30/14



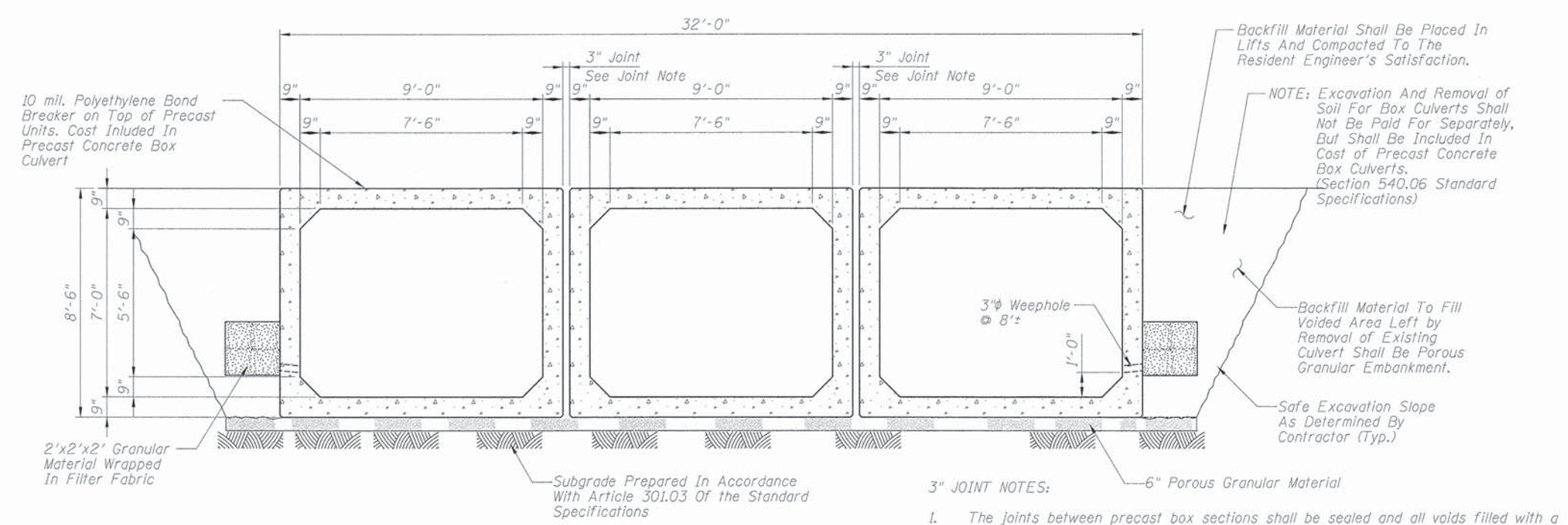
LOCATION SKETCH

**GENERAL PLAN**  
**MARENGO ROAD OVER**  
**MOKELER CREEK**  
F.A.U. 006 - SECTION 11-00064-00-BR  
McHENRY COUNTY  
STATION 11+60.35  
STRUCTURE NO. 056-5001



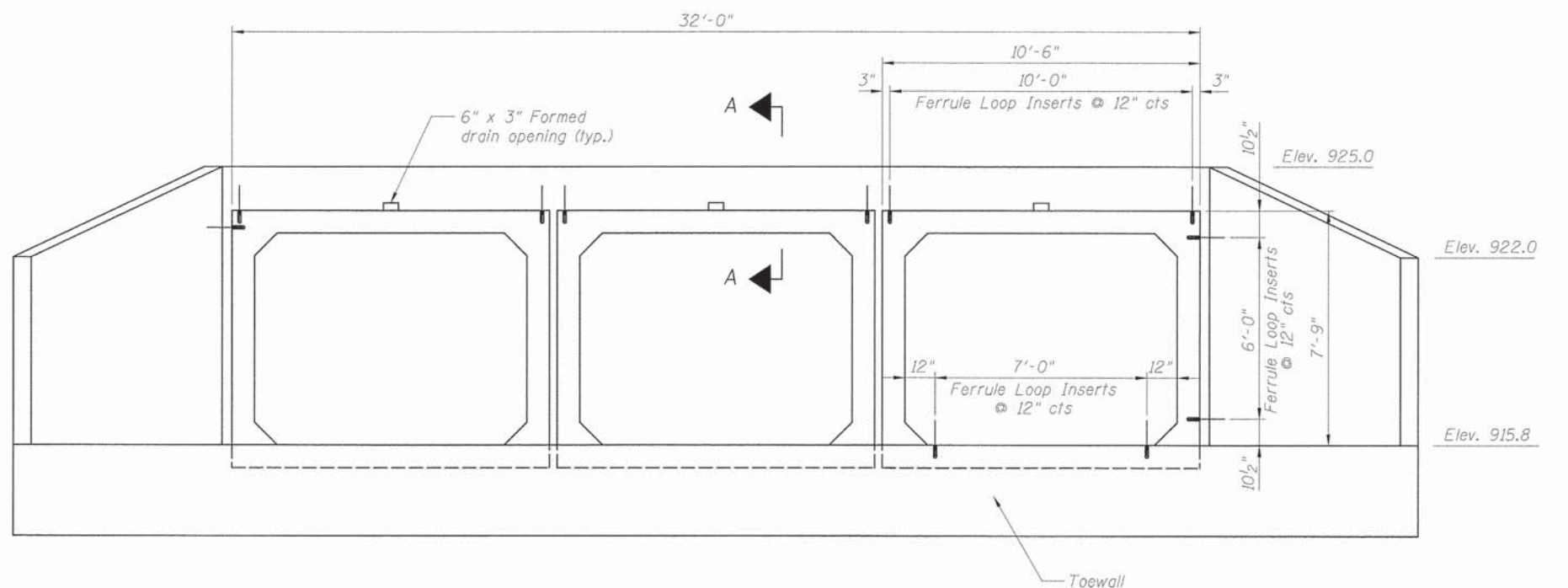


**SECTION A-A  
HEADWALL DETAIL**



**TYPICAL SECTION THRU PRECAST CULVERT**

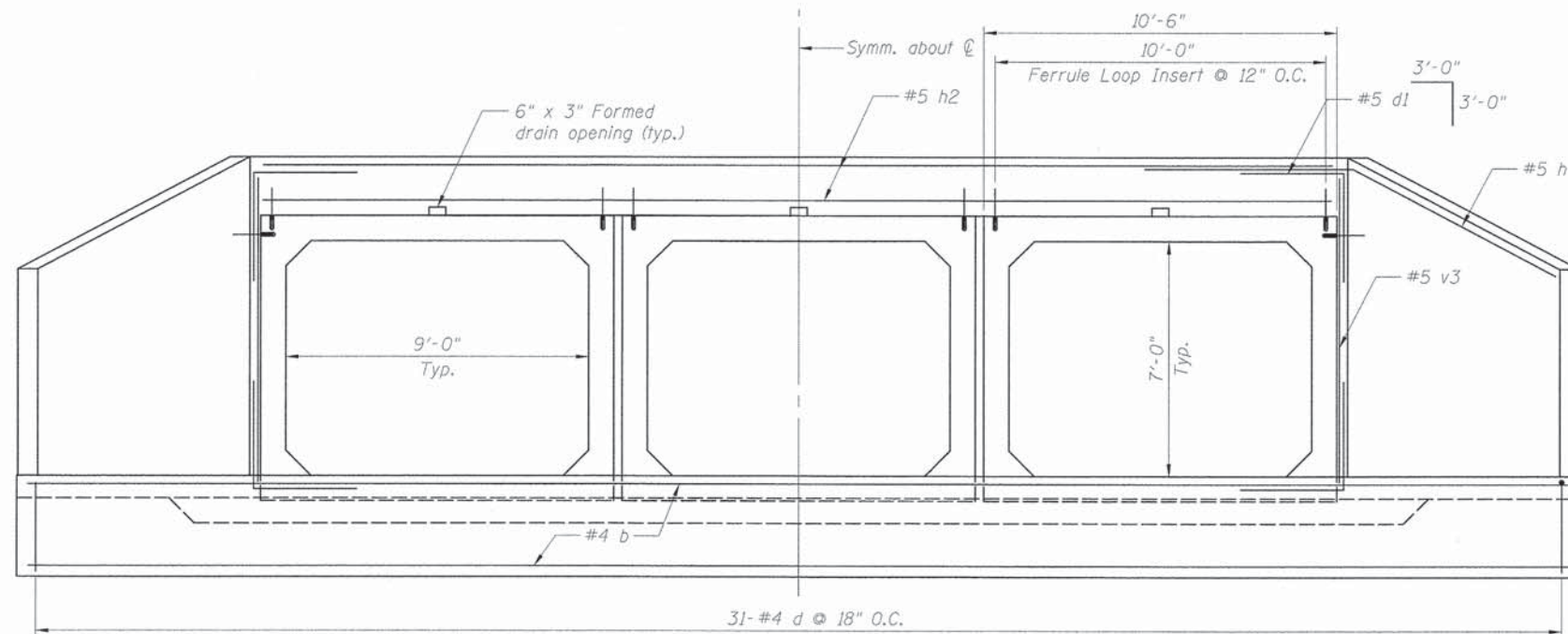
- 3" JOINT NOTES:**
1. The joints between precast box sections shall be sealed and all voids filled with a mastic joint sealer. In addition, the joints shall be externally sealed on the sides and top using 13 in. wide external sealing bands. Prior to applying the sealing band, the concrete surface shall be cleaned to remove dirt or laitance and allowed to dry. The sealing band shall be centered over the joint, secured in place, and protected from damage during the backfilling operation.
  2. When multi-cells are used, a 3 in. nominal space shall be left between adjacent sections. After the precast cells are in place and backfill has been placed to midheight of the precast concrete box sections on each side, the space between the cells shall be filled with Class SI concrete. The Class SI concrete shall be according to Section 1020, except the maximum size coarse aggregate shall be 3/8 in.
  3. Handling holes shall be filled with a precast concrete plug and sealed with mastic or mortar, or filled with a polyethylene plug. The plug shall not project beyond the inside surface after installation. When metal lifting inserts are used, their sockets shall be filled with mastic or mortar.
  4. The cost of mastic, sealing bands and SI concrete is incidental to Precast Concrete Box Culverts.



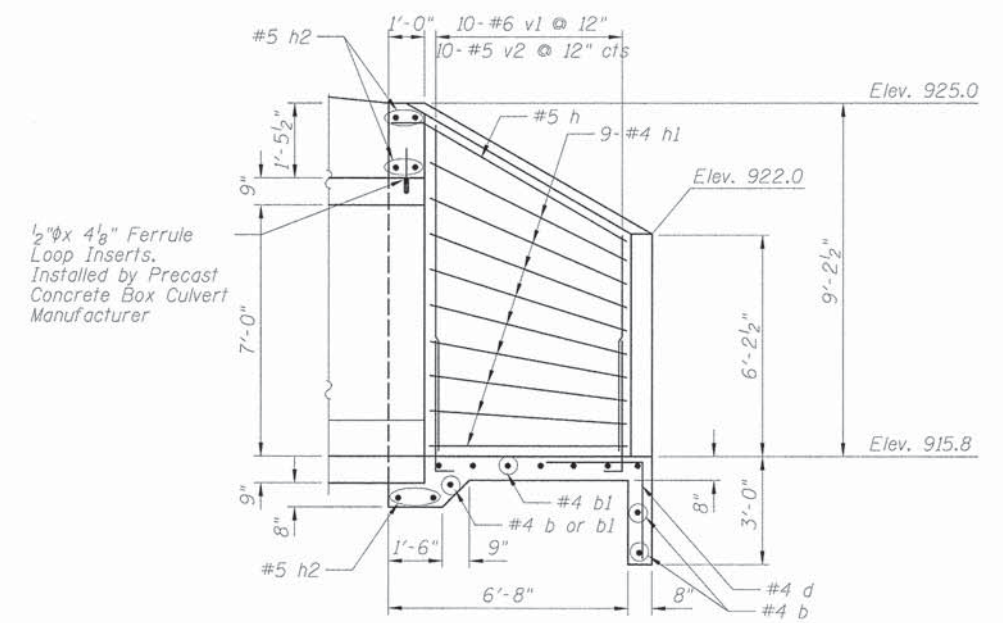
**EAST END VIEW - UPSTREAM**

FILE NAME =	USER NAME = prazalan	DESIGNED - GR	REVISED -	<b>STATE OF ILLINOIS DEPARTMENT OF TRANSPORTATION</b>	<b>MARENGO ROAD CULVERT SECTION AND UPSTREAM ELEVATION</b>		F.A.U. RTE	SECTION	COUNTY	TOTAL SHEETS	SHEET NO.		
NUMBER = 110001.00008\Struct\DET1.110001.00008.dwg		DRAWN - PDR	REVISED -		SCALE: N.T.S.	SHEET NO. S-3 OF S-6 SHEETS	STA.	TO STA.	0006	11-00064-00-BR	MCHENRY	23	15
		CHECKED - JGS	REVISED -		CONTRACT NO. 63899								
		DATE - 12/20/13	REVISED -		FED. ROAD DIST. NO. ILLINOIS FED. AID PROJECT								

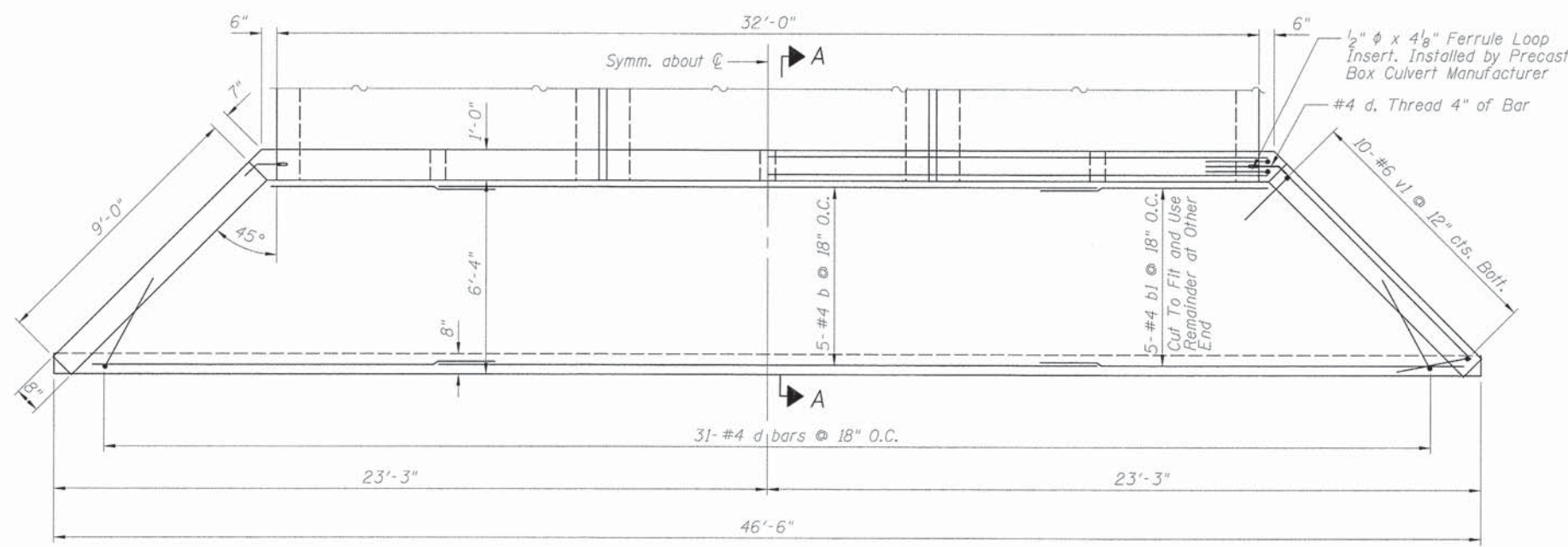




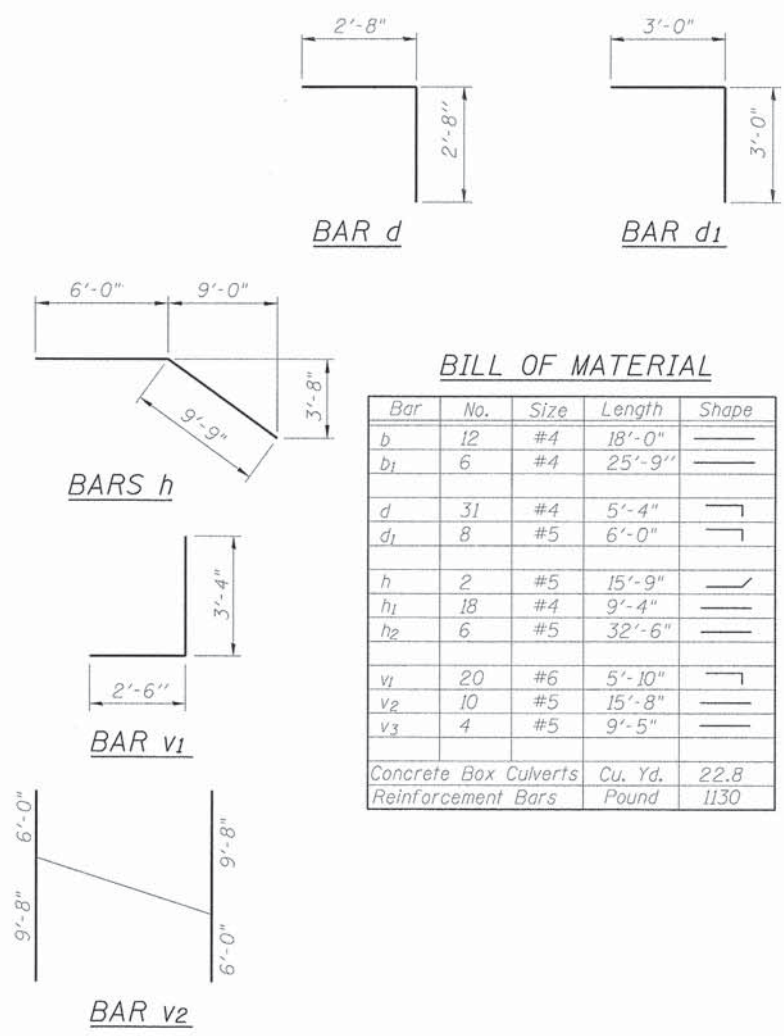
END ELEVATION - UPSTREAM



SECTION A-A



PLAN - UPSTREAM

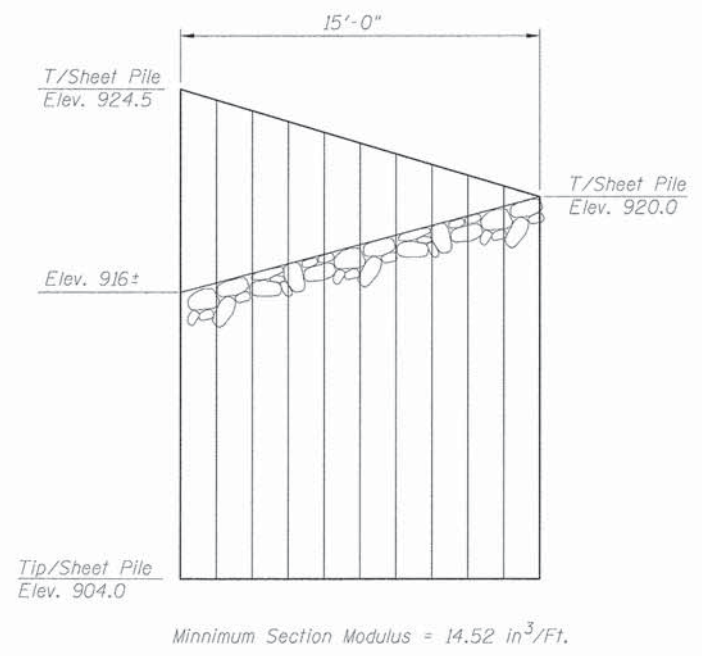


BILL OF MATERIAL

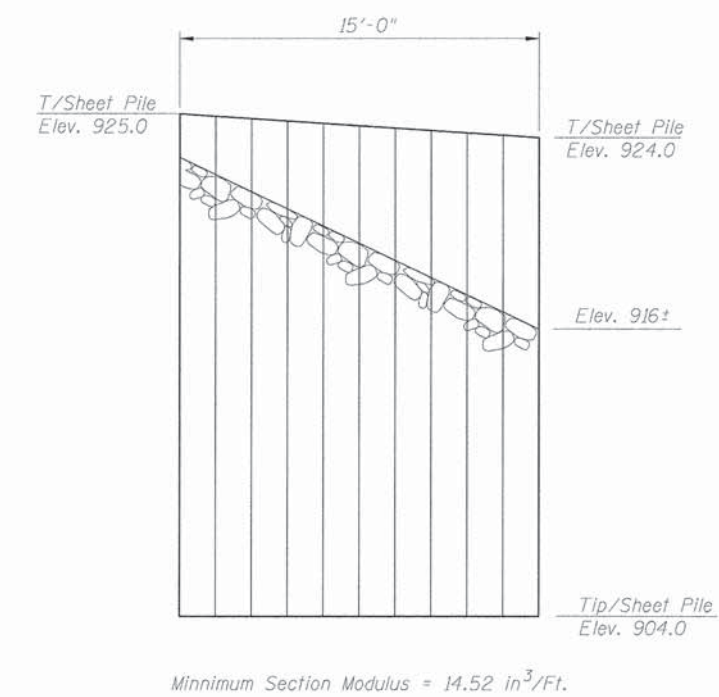
Bar	No.	Size	Length	Shape
b	12	#4	18'-0"	—
b1	6	#4	25'-9"	—
d	31	#4	5'-4"	┌
d1	8	#5	6'-0"	┌
h	2	#5	15'-9"	┌
h1	18	#4	9'-4"	—
h2	6	#5	32'-6"	—
v1	20	#6	5'-10"	┌
v2	10	#5	15'-8"	—
v3	4	#5	9'-5"	—
Concrete Box Culverts			Cu. Yd.	22.8
Reinforcement Bars			Pound	1130

BAR CUTTING DIAGRAM

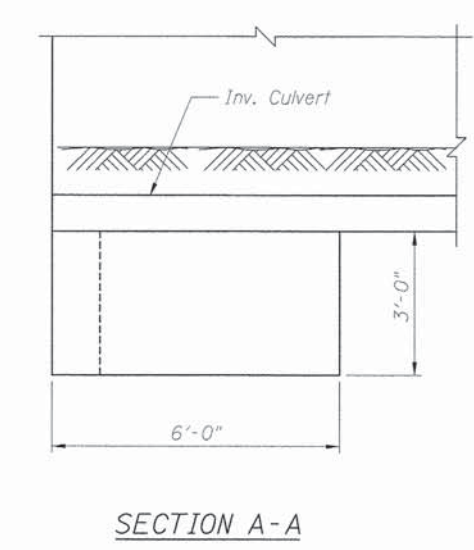




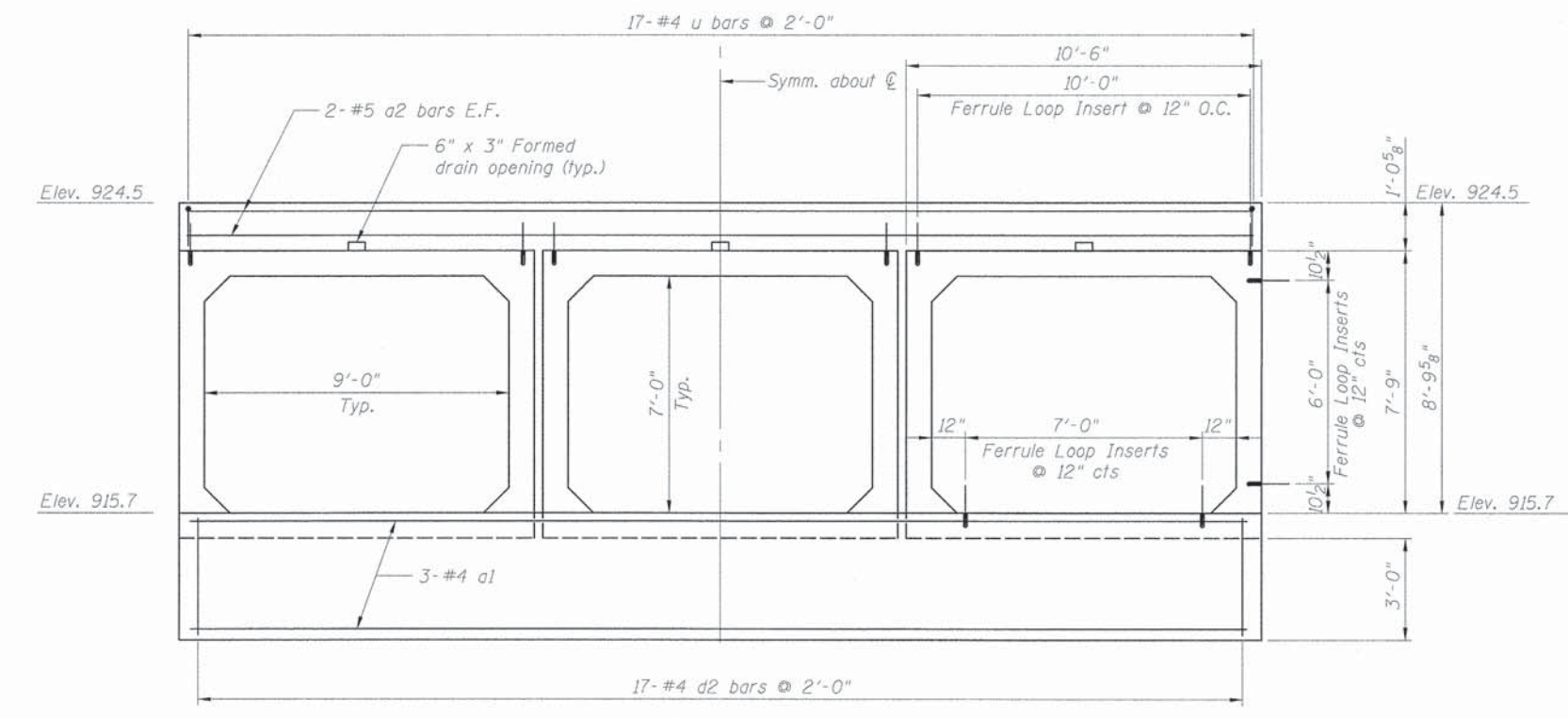
**ELEVATION - S.W. PERMANENT SHEET PILING**  
(Looking South)



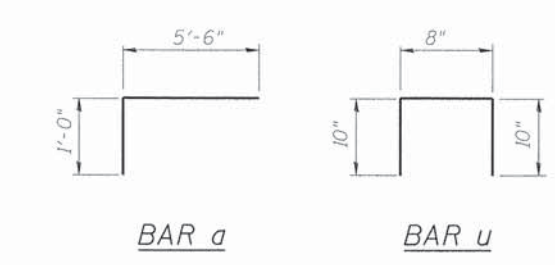
**ELEVATION - N.W. PERMANENT SHEET PILING**  
(Looking North)



**SECTION A-A**



**END ELEVATION - DOWNSTREAM**  
(Sheet Piling Not Shown For Clarity)

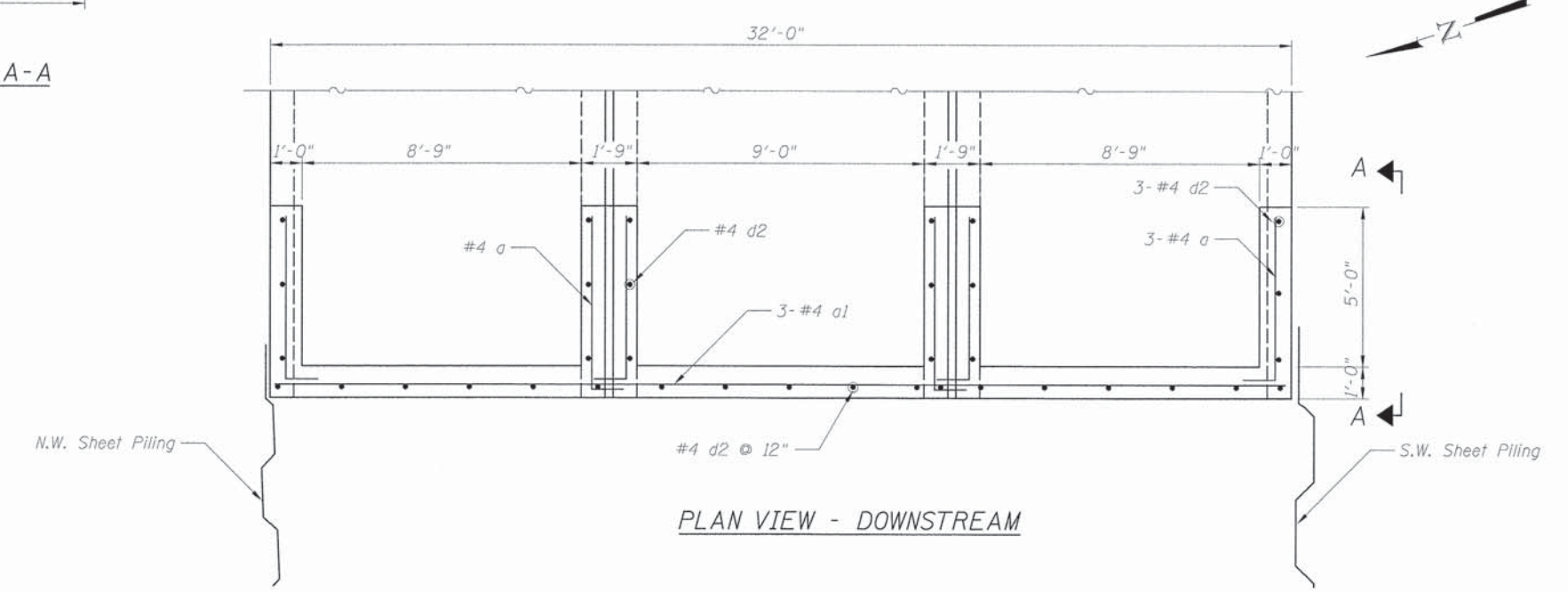


**BAR a**

**BAR u**

**BILL OF MATERIAL**

Bar	No.	Size	Length	Shape
a	18	#4	6'-6"	L
a1	3	#4	31'-6"	—
a2	4	#5	31'-6"	—
d2	35	#4	6'-6"	—
u	17	#4	2'-4"	L
Concrete Box Culverts			Cu. Yd.	6.6
Reinforcement Bars			Pound	450



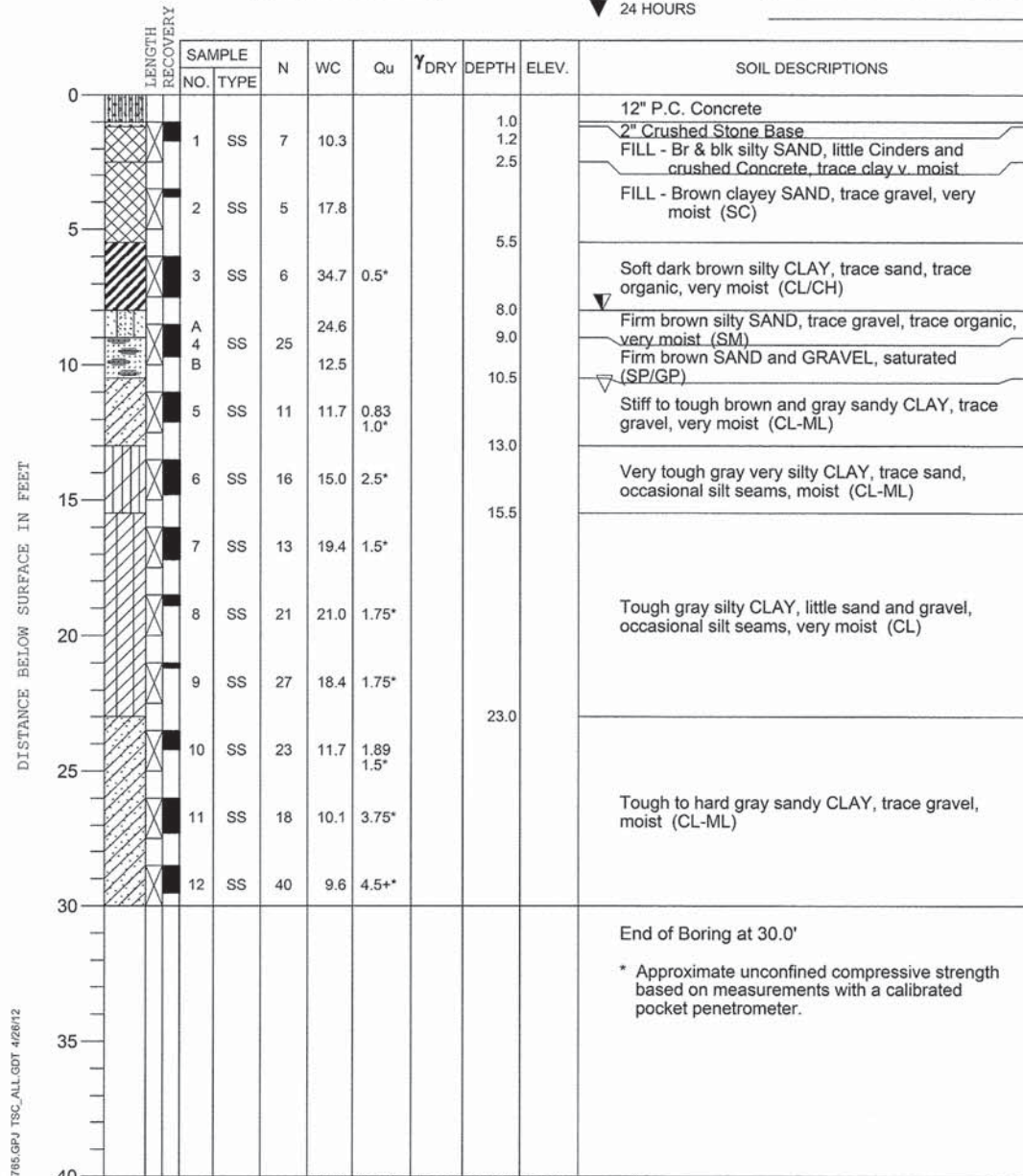
**PLAN VIEW - DOWNSTREAM**



PROJECT **Bridge Replacement, Marengo Road Over Mokeler Creek, Harvard, IL**  
 CLIENT **Christopher B. Burke Engineering, Ltd., Rosemont, Illinois**  
 BORING **1** DATE STARTED **12-29-11** DATE COMPLETED **12-29-11** JOB **L-77,765**



ELEVATIONS WATER LEVEL OBSERVATIONS  
 GROUND SURFACE \_\_\_\_\_ ▽ WHILE DRILLING **8.0'**  
 END OF BORING \_\_\_\_\_ ▽ AT END OF BORING **11.0'**  
 ▽ 24 HOURS \_\_\_\_\_

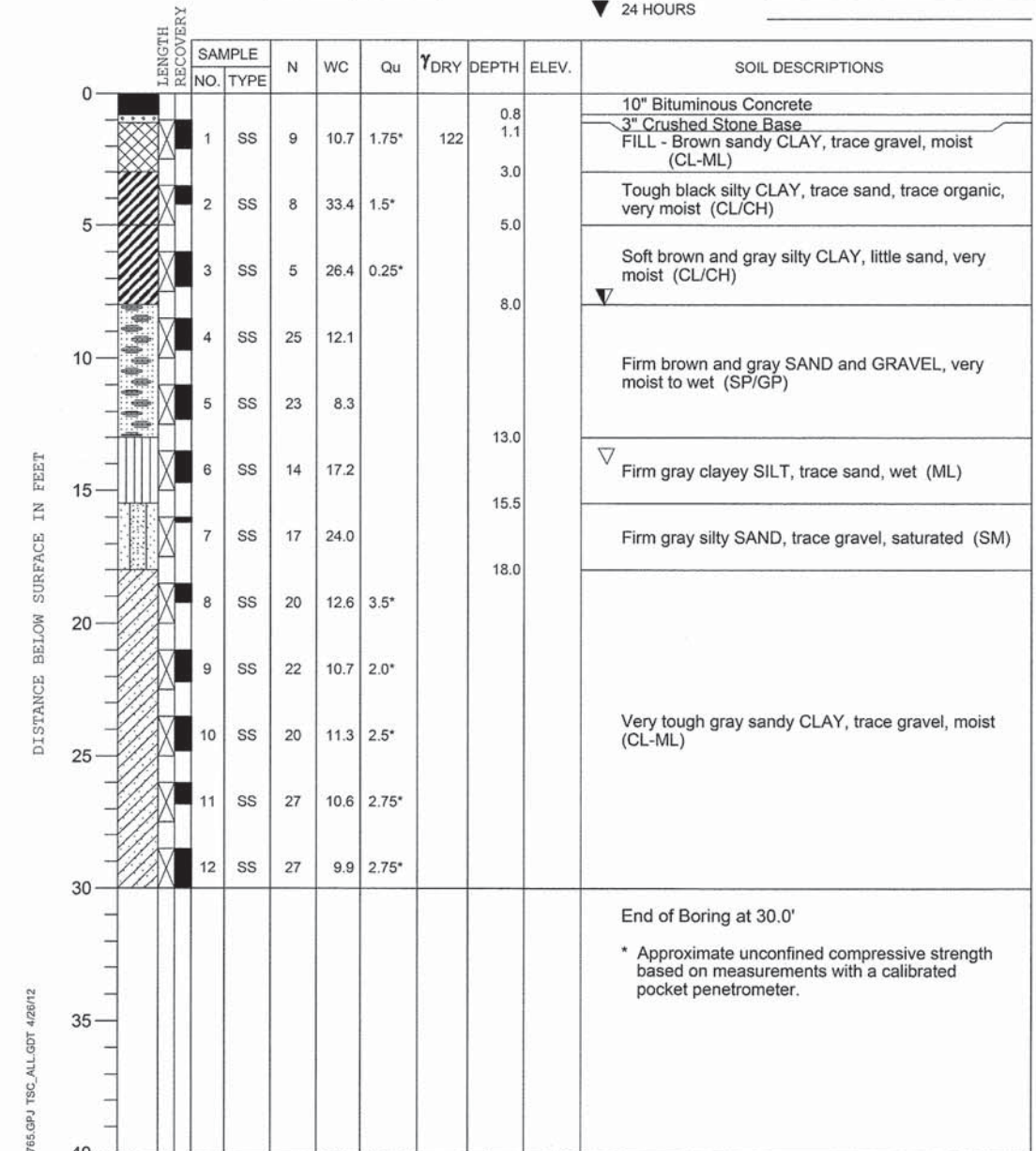


DRILL RIG NO. **275**  
 \* Approximate unconfined compressive strength based on measurements with a calibrated pocket penetrometer.

PROJECT **Bridge Replacement, Marengo Road Over Mokeler Creek, Harvard, IL**  
 CLIENT **Christopher B. Burke Engineering, Ltd., Rosemont, Illinois**  
 BORING **2** DATE STARTED **12-29-11** DATE COMPLETED **12-29-11** JOB **L-77,765**

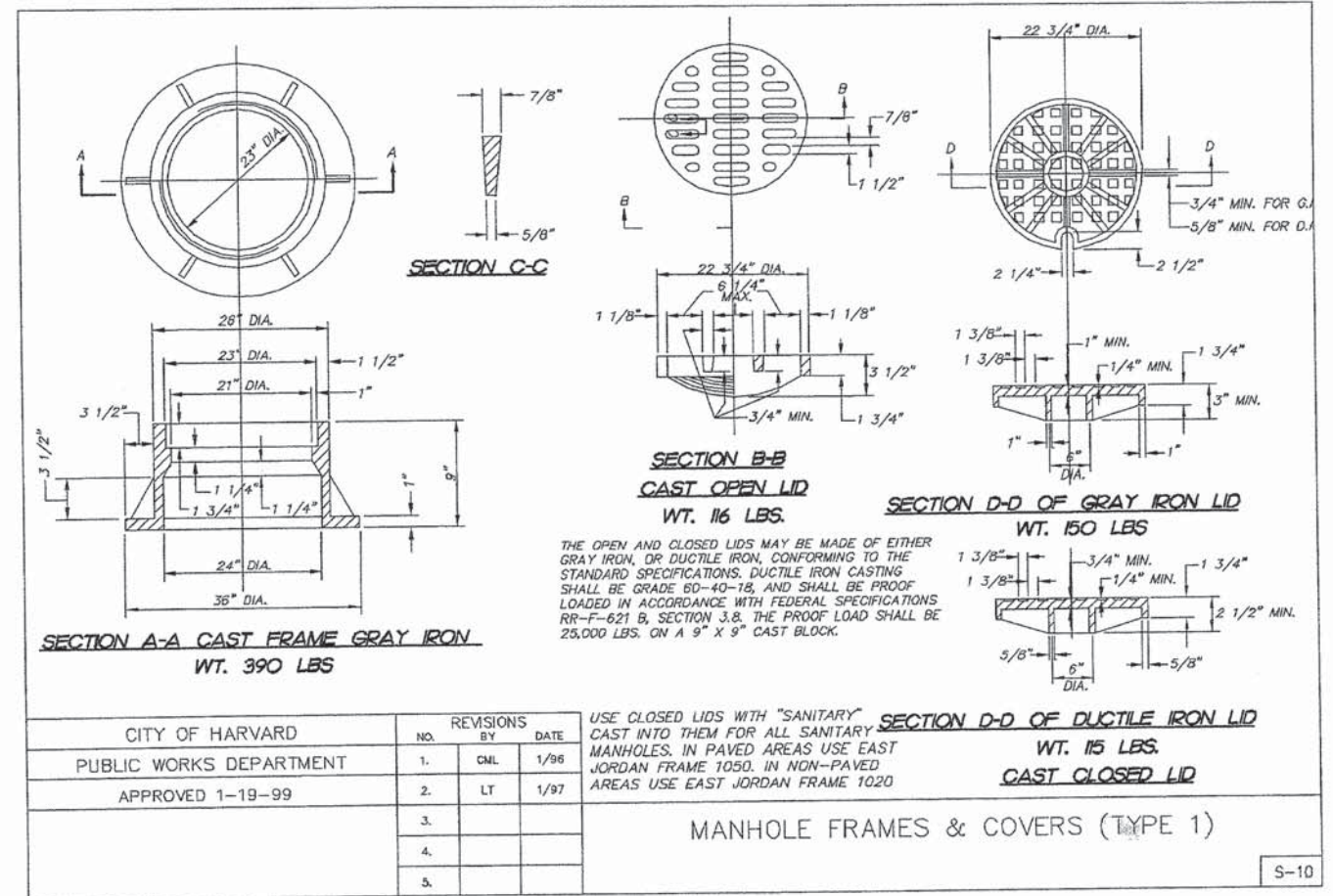
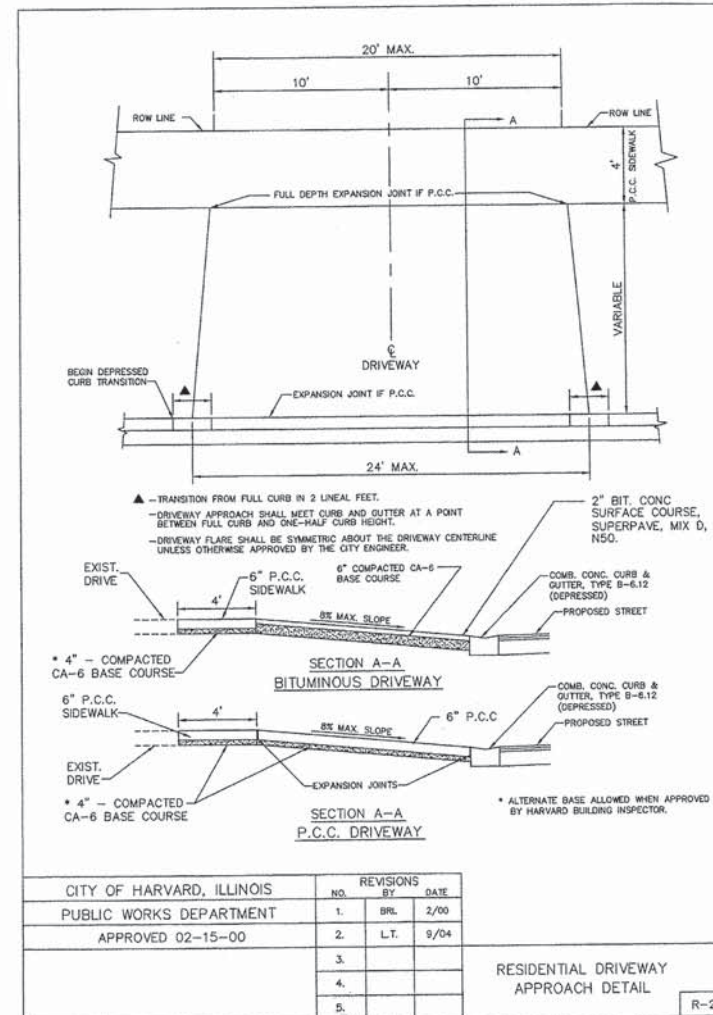
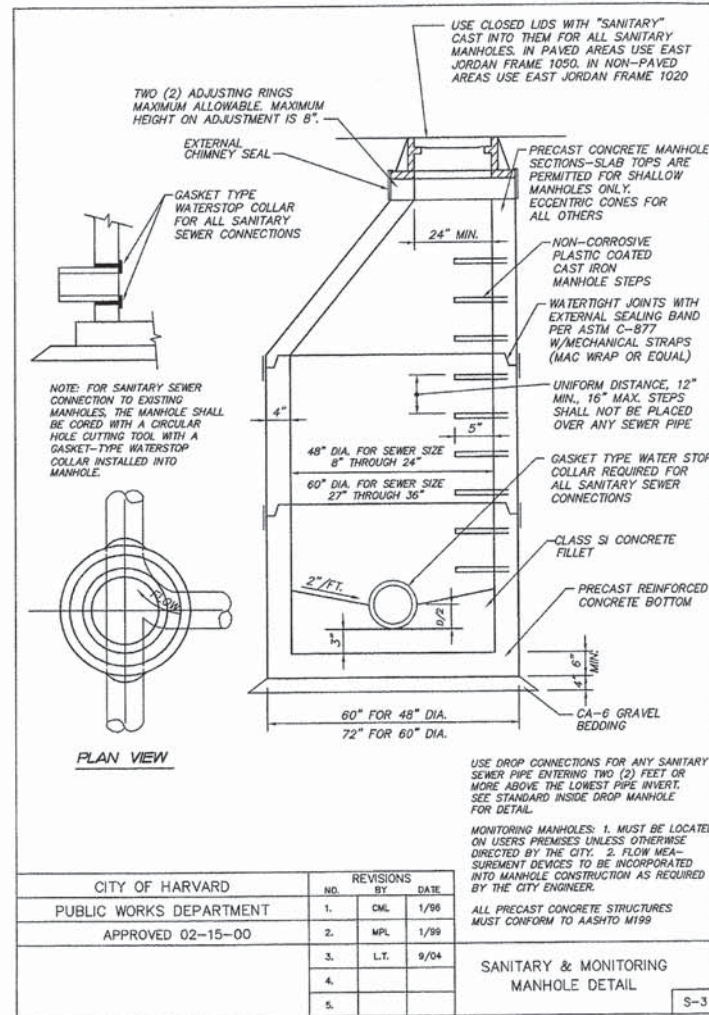


ELEVATIONS WATER LEVEL OBSERVATIONS  
 GROUND SURFACE \_\_\_\_\_ ▽ WHILE DRILLING **8.0'**  
 END OF BORING \_\_\_\_\_ ▽ AT END OF BORING **14.0'**  
 ▽ 24 HOURS \_\_\_\_\_

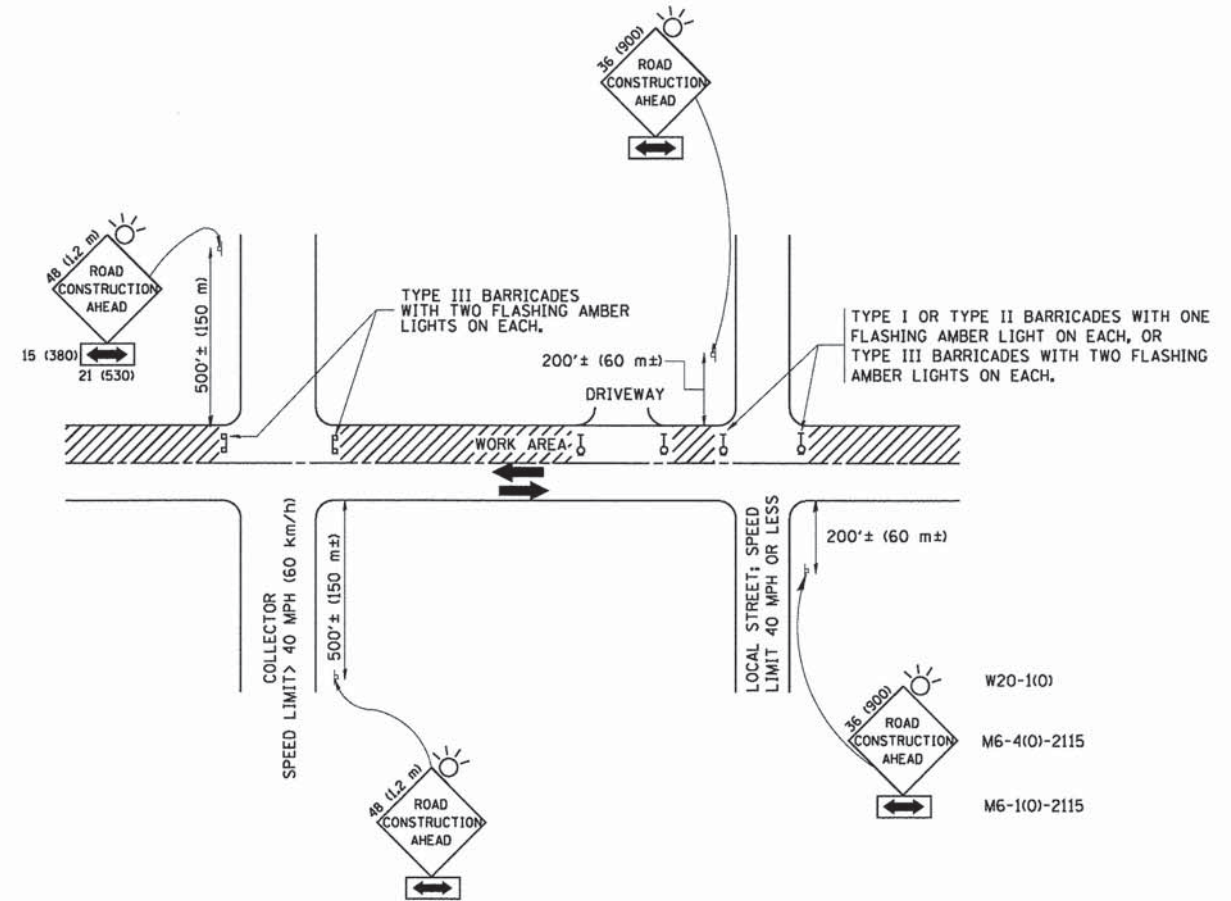


DRILL RIG NO. **275**  
 \* Approximate unconfined compressive strength based on measurements with a calibrated pocket penetrometer.









**TRAFFIC CONTROL AND PROTECTION FOR SIDE ROADS, INTERSECTIONS, AND DRIVEWAYS**

**NOTES:**

- A. FOR NO LANE RESTRICTION ON THE SIDE ROAD OR DRIVEWAYS
  - 1. SIDE ROAD WITH A SPEED LIMIT OF 40 MPH (60 km/h) OR LESS AS SHOWN ON THE DRAWING AND AS DIRECTED BY THE ENGINEER:
    - a) ONE ROAD CONSTRUCTION AHEAD SIGN 36 x 36 (900x900) WITH A FLASHER AND FLAG MOUNTED ON IT APPROXIMATELY 200' (60 m) IN ADVANCE OF THE MAIN ROUTE.
    - b) THE CLOSED PORTION OF THE MAIN ROUTE SHALL BE PROTECTED BY BLOCKING WITH TYPE I, TYPE II OR TYPE III BARRICADES, 1/3 OF THE CROSS SECTION OF THE CLOSED PORTION.
  - 2. SIDE ROAD WITH A SPEED LIMIT GREATER THAN 40 MPH (60 km/h) AS SHOWN ON THE DRAWING AND AS DIRECTED BY THE ENGINEER:
    - a) ONE ROAD CONSTRUCTION AHEAD SIGN 48 x 48 (1.2 m x 1.2 m) WITH A FLASHER MOUNTED ON IT APPROXIMATELY 500' (150 m) IN ADVANCE OF THE MAIN ROUTE.
    - b) THE CLOSED PORTION OF THE MAIN ROUTE SHALL BE PROTECTED BY BLOCKING WITH TYPE III BARRICADES, 1/2 OF THE CROSS SECTION OF THE CLOSED PORTION.
  - 3. WHEN THE SIDE ROAD LIES BETWEEN THE BEGINNING OF THE MAINLINE SIGNING AND THE WORK ZONE, A SINGLE HEADED ARROW (M6-1) SHALL BE USED IN LIEU OF THE DOUBLE HEADED ARROW (M6-4).
- B. FOR A LANE CLOSURE ON A SIDE ROAD OR DRIVEWAY:
 

USE APPLICABLE PORTIONS OF THE TYPICAL APPLICATION OF TRAFFIC CONTROL DEVICES (STD. 701501, STD. 701606 OR THE APPROPRIATE STANDARD). THE SPACING OF SIGNS AND BARRICADES SHALL BE ADJUSTED FOR FIELD CONDITIONS AS DIRECTED BY THE ENGINEER. THE DIRECTIONAL ARROW SHALL BE COVERED OR REMOVED WHEN NO LONGER CONSISTENT WITH THE SIDE ROAD LANE CLOSURE.
- C. ADVANCE WARNING SIGNS ARE TO BE OMITTED ON DRIVEWAY UNLESS OTHERWISE NOTED.
- D. THE TRAFFIC CONTROL AND PROTECTION FOR SIDE ROADS, INTERSECTIONS, AND DRIVEWAYS SHALL BE INCIDENTAL TO THE COST OF SPECIFIED TRAFFIC CONTROL STANDARDS OR ITEMS.

All dimensions are in millimeters (inches) unless otherwise shown.

FILE NAME = W:\dststd\22x34\1018.dgn	USER NAME = gaglianobt	DESIGNED - LHA	REVISED - J. OBERLE 10-18-95
		DRAWN -	REVISED - A. HOUSEH 03-06-96
	PLOT SCALE = 50,000' / IN.	CHECKED -	REVISED - A. HOUSEH 10-15-96
	PLOT DATE = 1/4/2008	DATE - 06-89	REVISED - T. RAMMACHER 01-06-00

**STATE OF ILLINOIS  
DEPARTMENT OF TRANSPORTATION**

<b>TRAFFIC CONTROL AND PROTECTION FOR SIDE ROADS, INTERSECTIONS, AND DRIVEWAYS</b>		F.A.U. RTE.	SECTION	COUNTY	TOTAL SHEETS	SHEET NO.
SCALE: NONE	SHEET NO. 1 OF 1 SHEETS	STA.	TO STA.	TC-10 CONTRACT NO.		
FED. ROAD DIST. NO. 1 ILLINOIS FED. AID PROJECT						

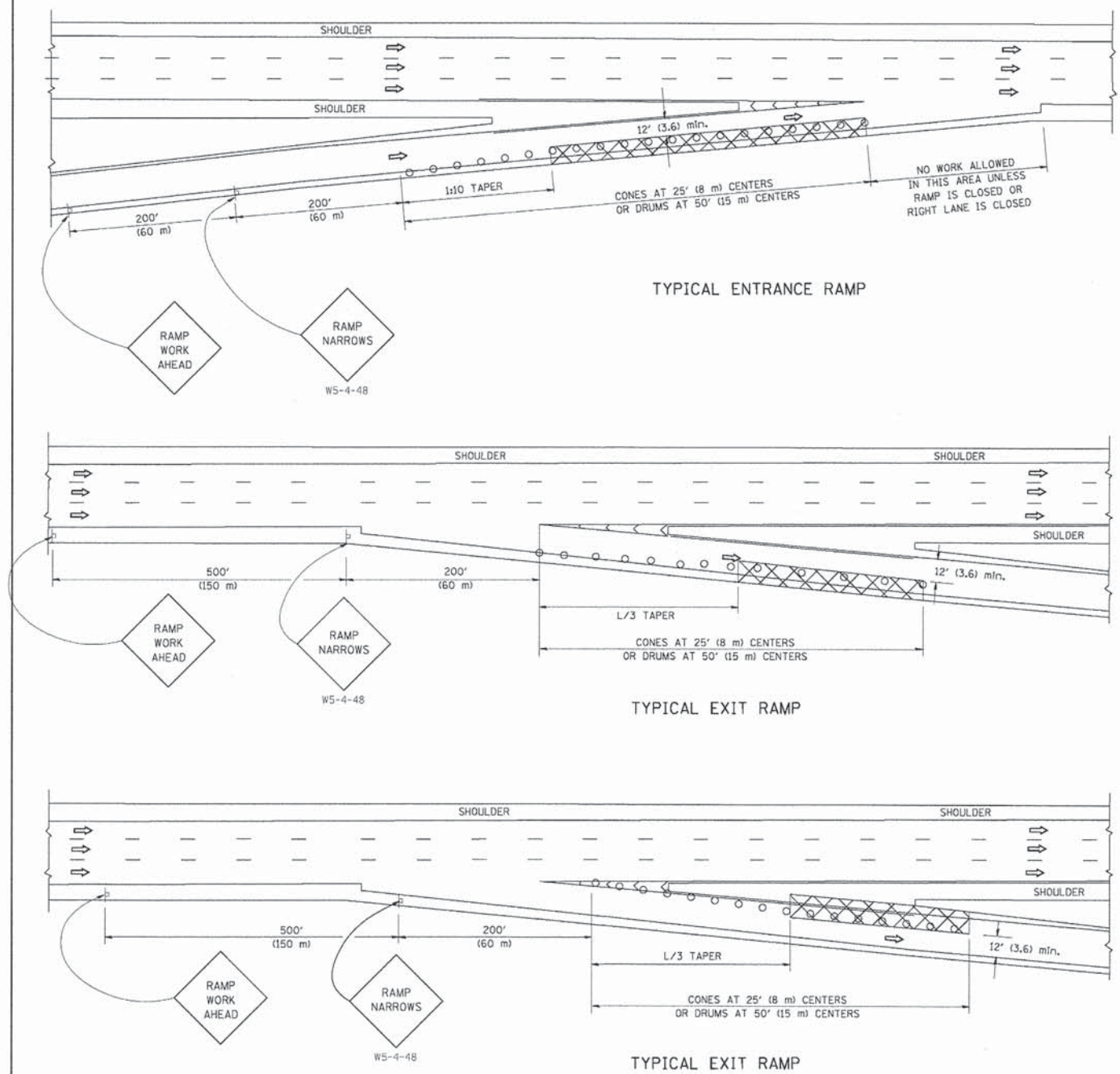
FILE NAME = N:\HARVARD\110001\000006\Civil\STD.110001.00006.DLSHT	USER NAME = prozalan	DESIGNED - GR	REVISED -
		DRAWN - PDR	REVISED -
	PLOT SCALE = 1'	CHECKED - JGS	REVISED -
	PLOT DATE = 12/23/2013	DATE - 12/20/13	REVISED -

**STATE OF ILLINOIS  
DEPARTMENT OF TRANSPORTATION**

<b>MARENGO ROAD</b>		F.A.U. RTE.	SECTION	COUNTY	TOTAL SHEETS	SHEET NO.
SCALE: N.T.S.	SHEET NO.	OF	SHEETS	STA.	TO STA.	CONTRACT NO. 63899
FED. ROAD DIST. NO. ILLINOIS FED. AID PROJECT						



PARTIAL RAMP CLOSURE DETAILS



SYMBOLS

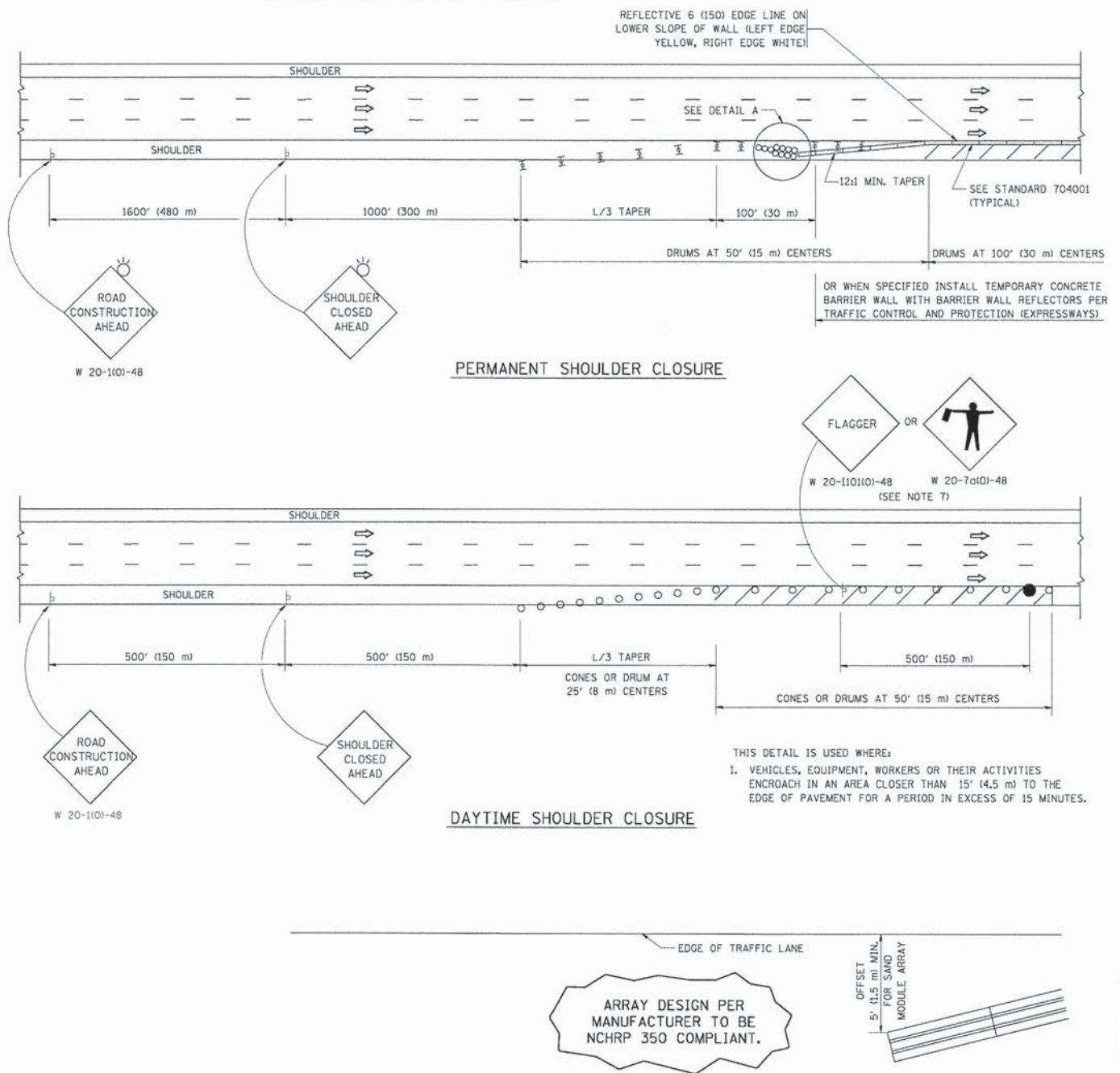
- ACTIVE WORK AREA
- SIGN ON PORTABLE OR PERMANENT SUPPORT
- FLAGGER WITH CONTROL SIGN
- TYPE II BARRICADE, DRUM OR VERTICAL BARRICADE WITH STEADY BURN MONO-DIRECTIONAL LIGHT
- CONE, DRUM OR BARRICADE

GENERAL NOTES

1. THE "L" DISTANCE EQUALS:
 

SPEED LIMIT	FORMULAS
45 mph (80 km/h) OR GREATER:	METRIC $L=0.65(WXS)$ ENGLISH $L=(WXS)$
W = WIDTH OF OFFSET IN FEET (METERS)	S = NORMAL POSTED SPEED MPH (KM/H)
2. PLASTIC DRUMS WITH HIGH PERFORMANCE REFLECTIVE SHEETING AND STEADY BURNING LIGHTS ARE REQUIRED FOR ALL NIGHTTIME CLOSURES.
3. ALL SIGNS SHALL BE POST MOUNTED IF THE CLOSURE TIME EXCEEDS FOUR DAYS.
4. FLASHING LIGHTS SHALL BE USED DURING THE HOURS OF DARKNESS AND SHALL BE INSTALLED ABOVE THE FIRST TWO SETS OF SIGNS.

SHOULDER CLOSURE DETAILS



ARRAY DESIGN PER MANUFACTURER TO BE NCHRP 350 COMPLIANT.

ALL DIMENSIONS ARE IN INCHES (MILLIMETERS) UNLESS OTHERWISE SHOWN.

FILE NAME = W:\data\td\22x34\1c17.dgn	USER NAME = luyao	DESIGNED - DRAWN - D.W.S.	REVISED - REVISED - J.A.F. 12-06
	PLOT SCALE = 58.0000 "/td> <td>CHECKED - DATE - 11-96</td> <td>REVISED - REVISED - S.P.B. 01-07</td>	CHECKED - DATE - 11-96	REVISED - REVISED - S.P.B. 01-07
	PLOT DATE = 1/26/2010		REVISED - REVISED - S.P.B. 12-09

**STATE OF ILLINOIS  
DEPARTMENT OF TRANSPORTATION**

**TRAFFIC CONTROL DETAILS FOR FREEWAY  
SHOULDER CLOSURES AND PARTIAL RAMP CLOSURES**

SCALE: NONE SHEET NO. 1 OF 1 SHEETS STA. TO STA.

F.A. RTE.	SECTION	COUNTY	TOTAL SHEETS	SHEET NO.
TC-17			CONTRACT NO.	
FED. ROAD DIST. NO. 1 ILLINOIS FED. AID PROJECT				

FILE NAME = N:\HARRYARD\110001\0000\Civil\STD_110001_000000.dwg	USER NAME = prazalan	DESIGNED - DRAWN - PDR	REVISED - REVISED -
	PLOT SCALE = 1"	CHECKED - DATE - 12/20/13	REVISED - REVISED -
	PLOT DATE = 12/23/2013		REVISED -

**STATE OF ILLINOIS  
DEPARTMENT OF TRANSPORTATION**

**MARENGO ROAD**

SCALE: N.T.S. SHEET NO. OF SHEETS STA. TO STA.

F.A.U. RTE.	SECTION	COUNTY	TOTAL SHEETS	SHEET NO.
0006	11-00064-00-BR	MCHENRY	23	21
CONTRACT NO. 63899				
FED. ROAD DIST. NO. ILLINOIS FED. AID PROJECT				



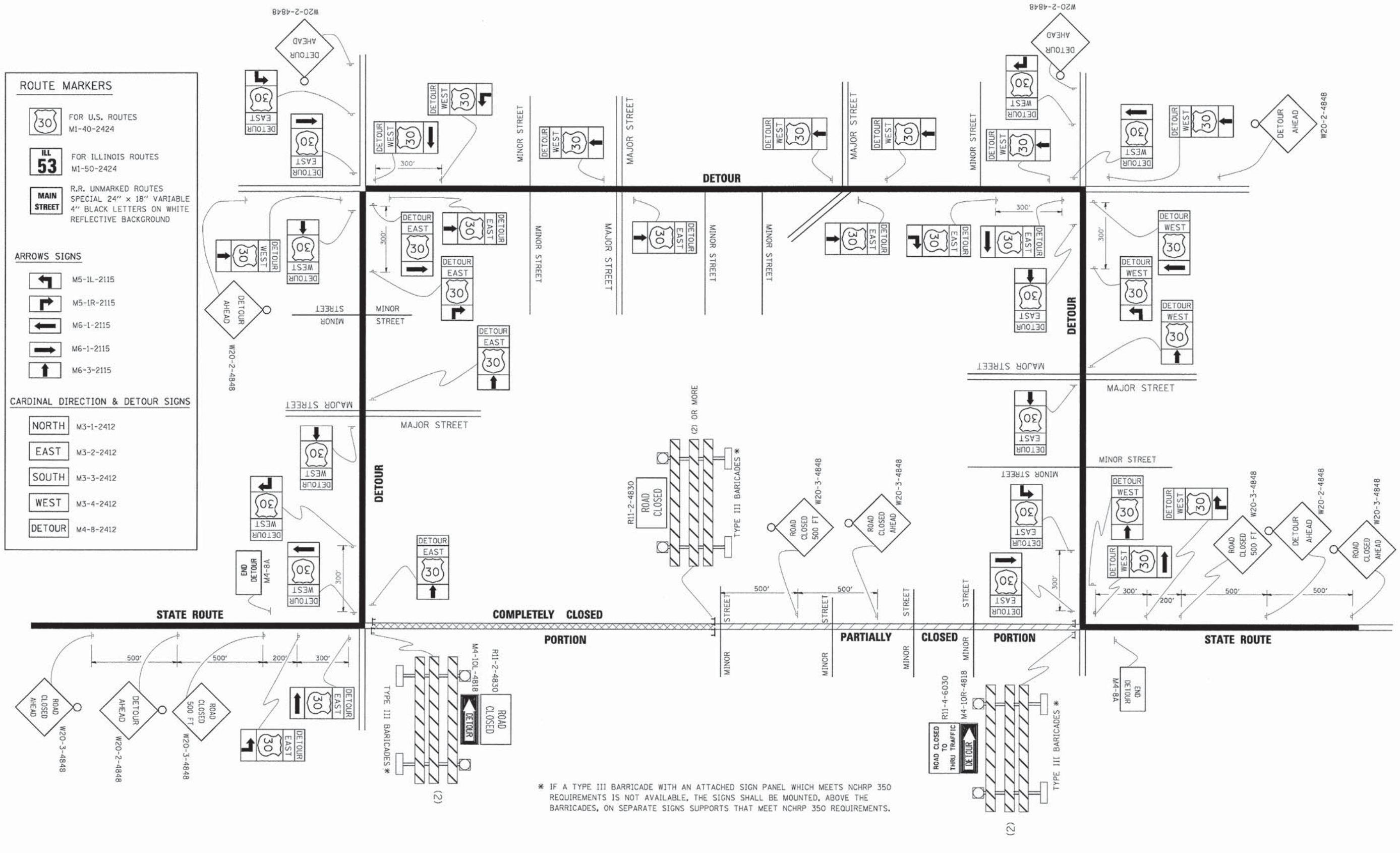
ROUTE MARKERS	
	FOR U.S. ROUTES M1-40-2424
	FOR ILLINOIS ROUTES M1-50-2424
	R.R. UNMARKED ROUTES SPECIAL 24" x 18" VARIABLE 4" BLACK LETTERS ON WHITE REFLECTIVE BACKGROUND

ARROWS SIGNS	
	M5-1L-2115
	M5-1R-2115
	M6-1-2115
	M6-1-2115
	M6-3-2115
	M6-3-2115

CARDINAL DIRECTION & DETOUR SIGNS	
	NORTH M3-1-2412
	EAST M3-2-2412
	SOUTH M3-3-2412
	WEST M3-4-2412
	DETOUR M4-8-2412



\* IF A TYPE III BARRICADE WITH AN ATTACHED SIGN PANEL WHICH MEETS NCHRP 350 REQUIREMENTS IS NOT AVAILABLE, THE SIGNS SHALL BE MOUNTED, ABOVE THE BARRICADES, ON SEPARATE SIGNS SUPPORTS THAT MEET NCHRP 350 REQUIREMENTS.

FILE NAME =	USER NAME = drivakasn	DESIGNED -	REVISED - 10-18-02
c:\pwork\p1001\DRIVAKASGN\d0109315\121.dgn		DRAWN -	REVISED - R. BORO 09-14-09
	PLOT SCALE = 49.9999 / IN.	CHECKED -	REVISED -
	PLOT DATE = 9/14/2009	DATE -	REVISED -

**STATE OF ILLINOIS  
DEPARTMENT OF TRANSPORTATION**

<b>DETOUR SIGNING FOR CLOSING STATE HIGHWAYS</b>			
SCALE: NONE	SHEET NO. 1 OF 1 SHEETS	STA.	TO STA.

F.A. RTE.	SECTION	COUNTY	TOTAL SHEETS	SHEET NO.
<b>TC-21</b>		<b>CONTRACT NO.</b>		
FED. ROAD DIST. NO. 1 ILLINOIS FED. AID PROJECT				

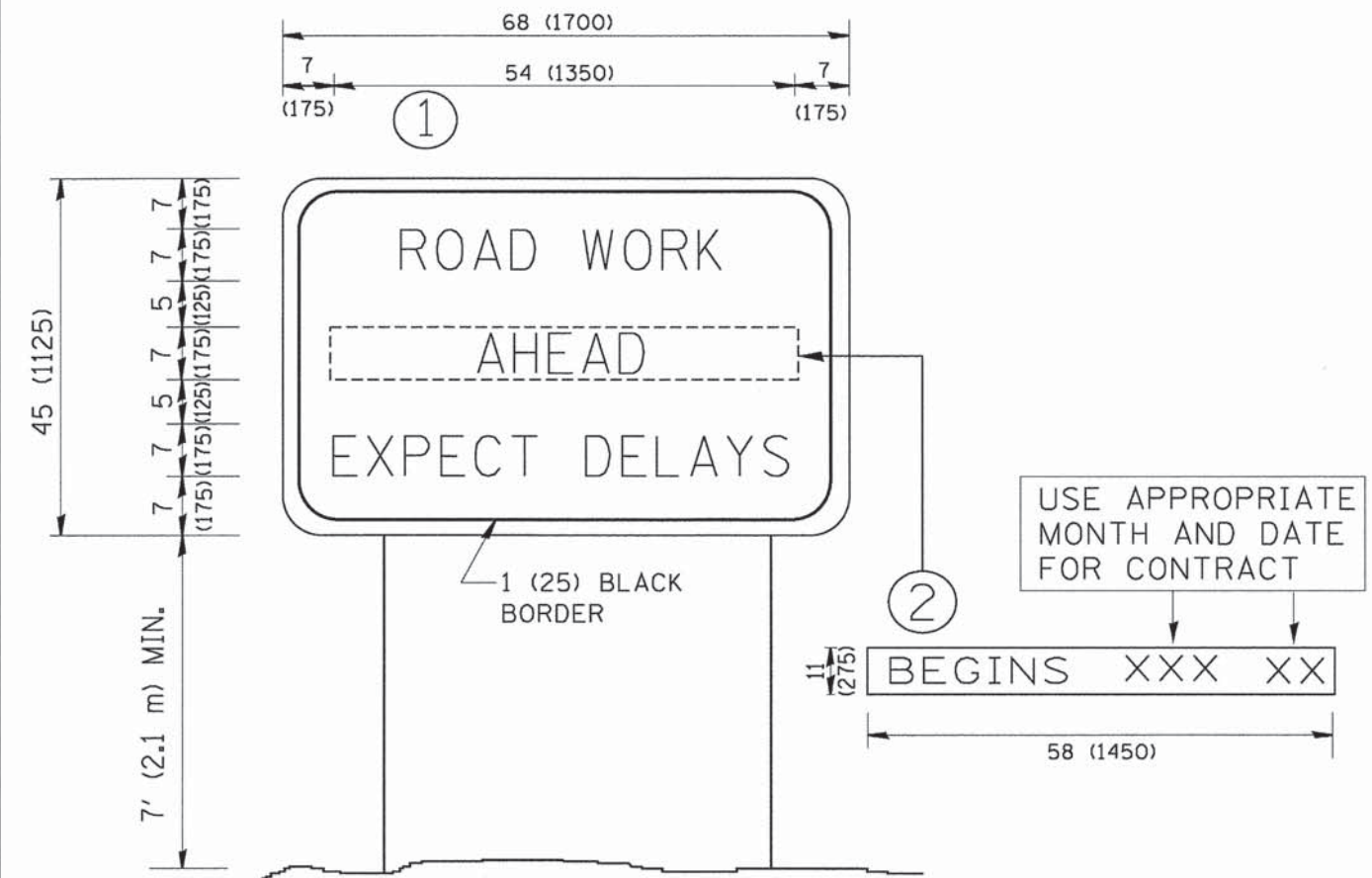
FILE NAME =	USER NAME = prazalan	DESIGNED - GR	REVISED -
N:\HARRARD\110001\00000\Civil\STD.110001\00000...LSHT		DRAWN - PDR	REVISED -
	PLOT SCALE = 1'	CHECKED - JGS	REVISED -
	PLOT DATE = 12/23/2013	DATE - 12/20/13	REVISED -

**STATE OF ILLINOIS  
DEPARTMENT OF TRANSPORTATION**

<b>MARENGO ROAD</b>			
SCALE: N.T.S.	SHEET NO.	OF SHEETS	STA. TO STA.

F.A.U. RTE	SECTION	COUNTY	TOTAL SHEETS	SHEET NO.
0006	11-00064-00-BR	MCHENRY	23	22
<b>CONTRACT NO. 63899</b>				
FED. ROAD DIST. NO. ILLINOIS FED. AID PROJECT				





**NOTES:**

1. USE BLACK LETTERING ON ORANGE BACKGROUND.
2. ERECT SIGNS IN ADVANCE OF THE LOCATION FOR THE "ROAD CONSTRUCTION AHEAD" SIGN AT LOCATIONS AS DIRECTED BY THE ENGINEER.
3. ERECT SIGN ① WITH INSTALLED PANEL ② ONE WEEK PRIOR TO THE START OF CONSTRUCTION.
4. REMOVE PANEL ② SOON AFTER THE START OF CONSTRUCTION.
5. SEE SPECIAL PROVISION FOR "TEMPORARY INFORMATION SIGNING" FOR ADDITIONAL INFORMATION.
6. ONE SIGN ASSEMBLY EQUALS 25.70 SQ. FT. (2.3 SQ. M.)
7. SHALL BE PAID FOR AS TEMPORARY INFORMATION SIGNING.

ALL DIMENSIONS ARE IN INCHES (MILLIMETERS) UNLESS OTHERWISE SHOWN.

FILE NAME = N:\d\ststd\22x34\to22.dgn	USER NAME = goglienobt	DESIGNED -	REVISED - R. MIRS 09-15-97
		DRAWN -	REVISED - R. MIRS 12-11-97
	PLOT SCALE = 50.000' / IN.	CHECKED -	REVISED - T. RAMMACHER 02-02-99
	PLOT DATE = 1/4/2008	DATE -	REVISED - C. JUCIUS 01-31-07

**STATE OF ILLINOIS  
DEPARTMENT OF TRANSPORTATION**

<b>ARTERIAL ROAD INFORMATION SIGN</b>		F.A. RTE.	SECTION	COUNTY	TOTAL SHEETS	SHEET NO.
SCALE: NONE	SHEET NO. 1 OF 1 SHEETS	STA.	TO STA.	TC-22 CONTRACT NO.		
FED. ROAD DIST. NO. 1 ILLINOIS FED. AID PROJECT						

FILE NAME = N:\HARVARD\110001\00005\Civil\STD.110001\00005.PLSHT	USER NAME = prazelan	DESIGNED - GR	REVISED -
		DRAWN - PDR	REVISED -
	PLOT SCALE = 1"	CHECKED - JGS	REVISED -
	PLOT DATE = 12/23/2013	DATE - 12/20/13	REVISED -

**STATE OF ILLINOIS  
DEPARTMENT OF TRANSPORTATION**

<b>MARENGO ROAD</b>		F.A.U. RTE.	SECTION	COUNTY	TOTAL SHEETS	SHEET NO.
SCALE: N.T.S.	SHEET NO. OF SHEETS	STA.	TO STA.	0006	11-00064-00-BR	MCHENRY 23 23
CONTRACT NO. 63899						
FED. ROAD DIST. NO. ILLINOIS FED. AID PROJECT						