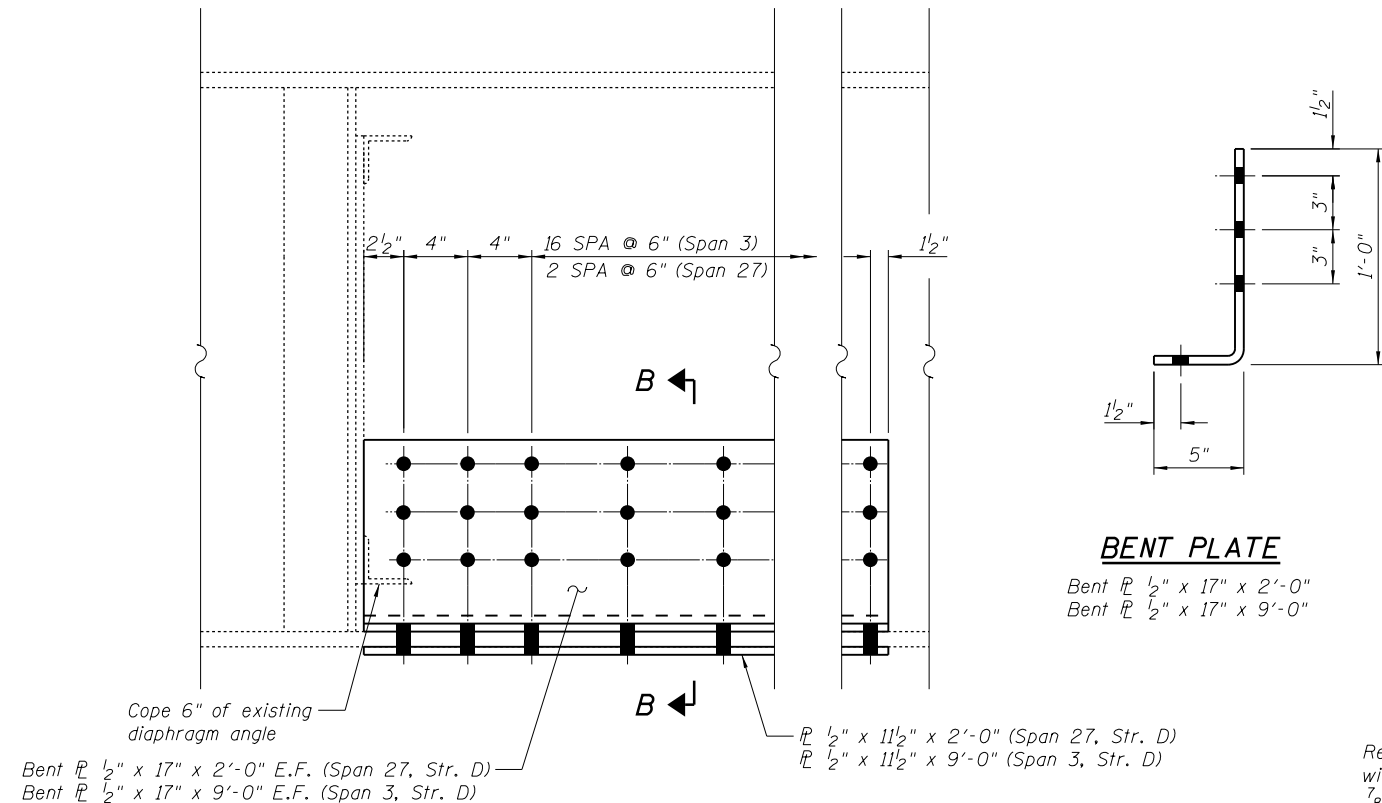
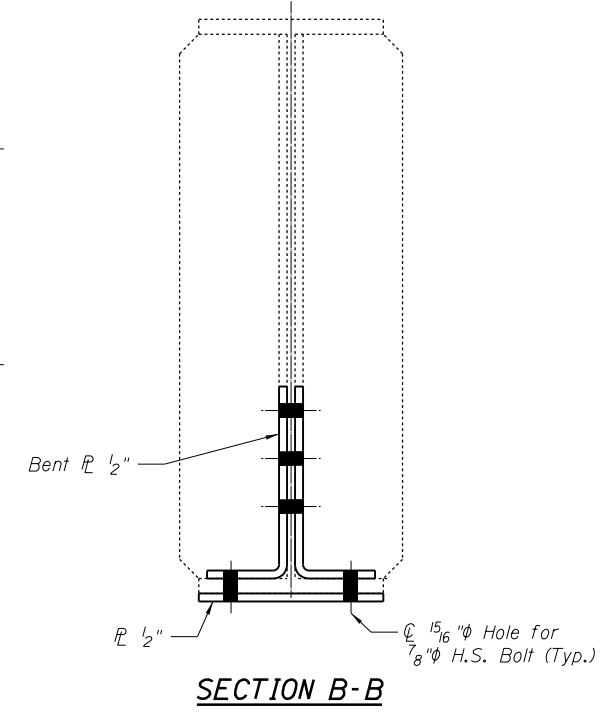


FILE NAME = I:\Projects\4015550\4015550-0001-90\_CAD\_Models\_and\_Sheets\04\_CAD\_Models\_and\_Sheets\04-Details\_4.dgn

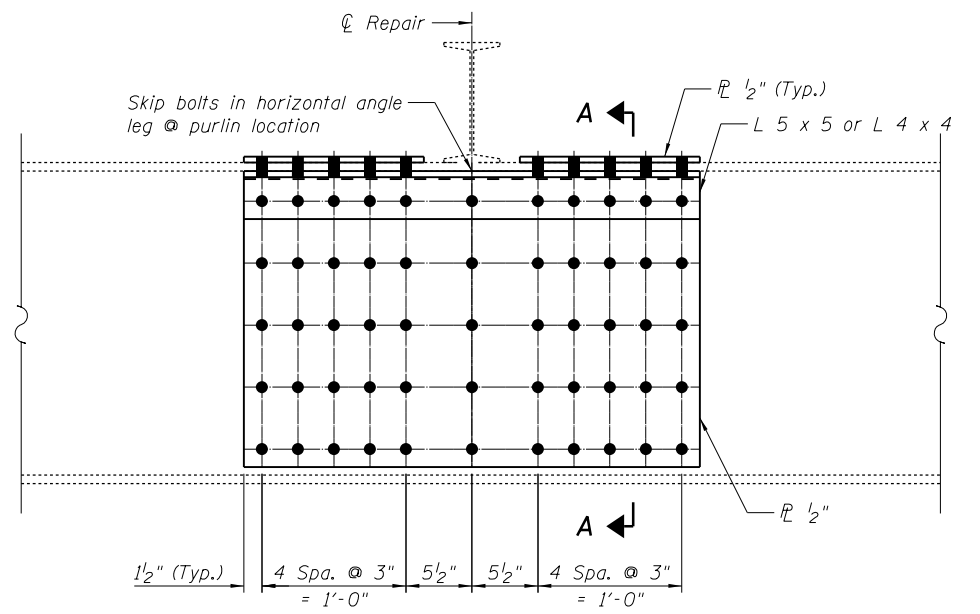


**BENT PLATE**

Bent  $\frac{1}{2}$ " x 17" x 2'-0"  
Bent  $\frac{1}{2}$ " x 17" x 9'-0"

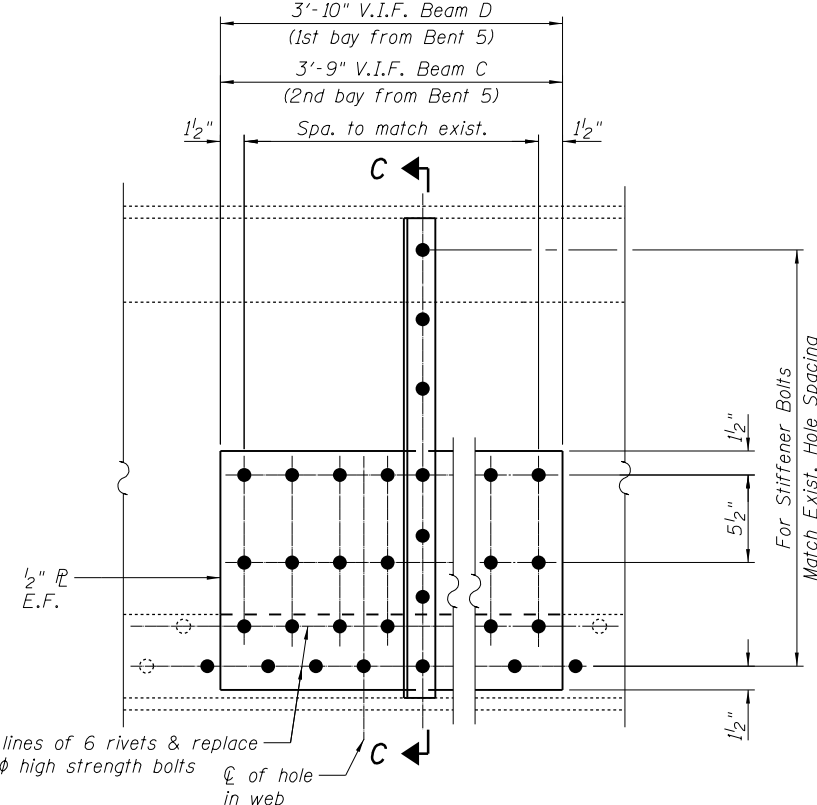
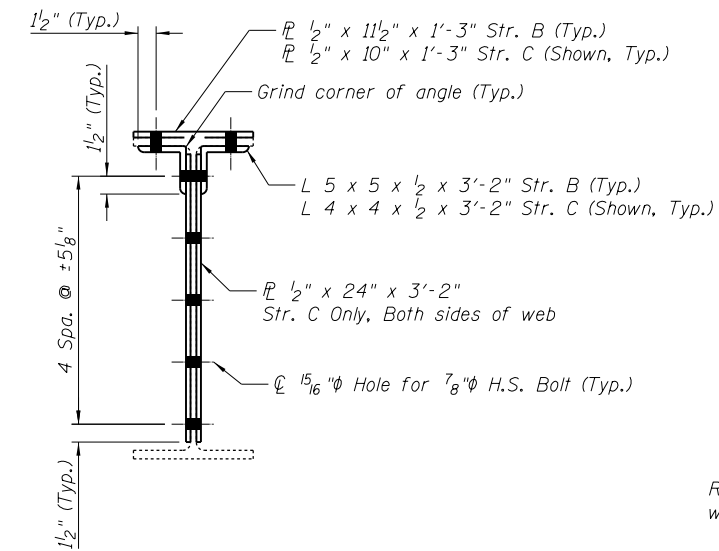


Remove and replace existing stiffener with L 5 x 3 $\frac{1}{2}$  and rivets with  $\frac{7}{8}$ "  $\phi$  H.S. Bolts (Beam C Only)



**DETAIL 12**

Span 10 Str. B, 22'-11 $\frac{1}{4}$ " South of FB. 2  
Span 10 Str. C, 8'-10 $\frac{3}{4}$ " South of FB. 0 (Looking East)

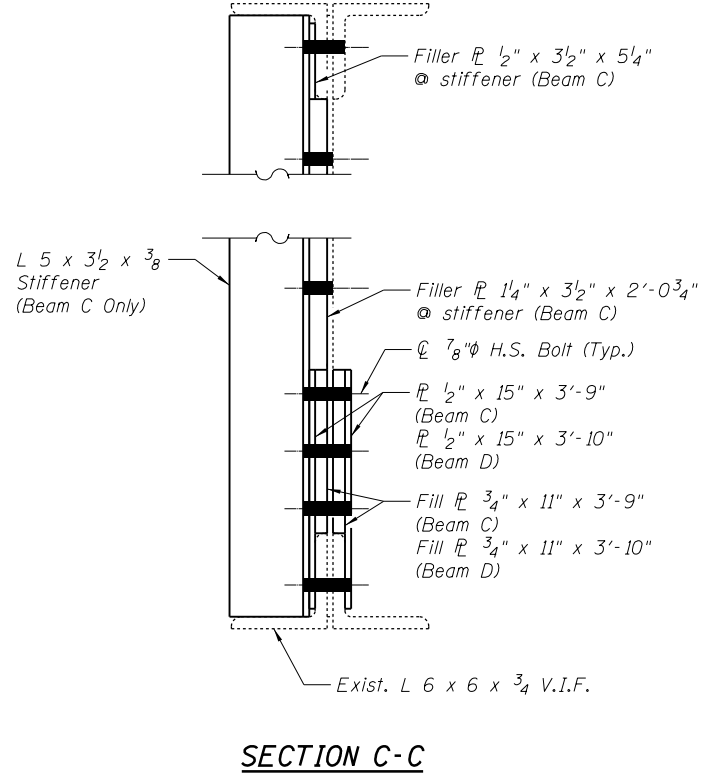


**DETAIL 13**

See Table for Locations and Plates

**DETAIL 13 - LOCATION AND PLATE SUMMARY**

SPAN	BEAM	LOCATION	COVER PLATE	STIFFENER	FILL PLATE @ STIFF.	FILL PLATE	FILL PLATE
6	C	15' from Bent 5	$\frac{1}{2}$ " x 15" x 3'-9"	L 5" x 3 $\frac{1}{2}$ " x $\frac{3}{8}$ " x 2'-11"	$\frac{1}{4}$ " x 3 $\frac{1}{2}$ " x 2'-0 $\frac{3}{4}$ "	$\frac{3}{4}$ " x 11" x 3'-9"	$\frac{1}{2}$ " x 3 $\frac{1}{2}$ " x 5 $\frac{1}{4}$ "
6	D	6' from Bent 5	$\frac{1}{2}$ " x 15" x 3'-10"	N/A	N/A	$\frac{3}{4}$ " x 11" x 3'-10"	N/A



USER NAME = pottrjm	DESIGNED - MJK	REVISED
PLOT SCALE = 1:4,000 @ 1" = 40'	CHECKED - JAN	REVISED
PLOT DATE = 1/21/2014	DRAWN - MJK/KK	REVISED
	CHECKED - JAN	REVISED

STATE OF ILLINOIS  
DEPARTMENT OF TRANSPORTATION

STRUCTURAL STEEL REPAIR DETAILS, SHEET 4  
STRUCTURE NO. 081-9905

SHEET NO. 15 OF 33 SHEETS

F.A.P. RFE.	SECTION	COUNTY	TOTAL SHEETS	SHEET NO.
308	(3BRIM)	ROCK ISLAND	47	28
C-92-090-12		CONTRACT NO. 64H28		
ILLINOIS FED. AID PROJECT				