

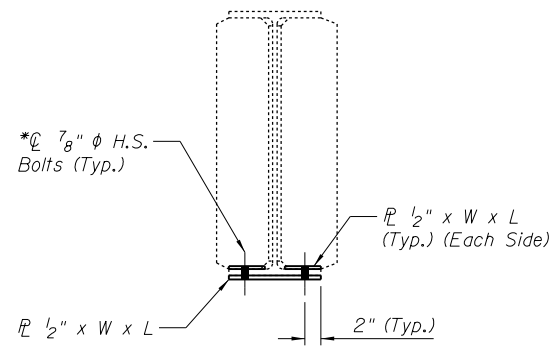
DETAIL 30

Looking West
See Table for Locations and Plate Dimensions

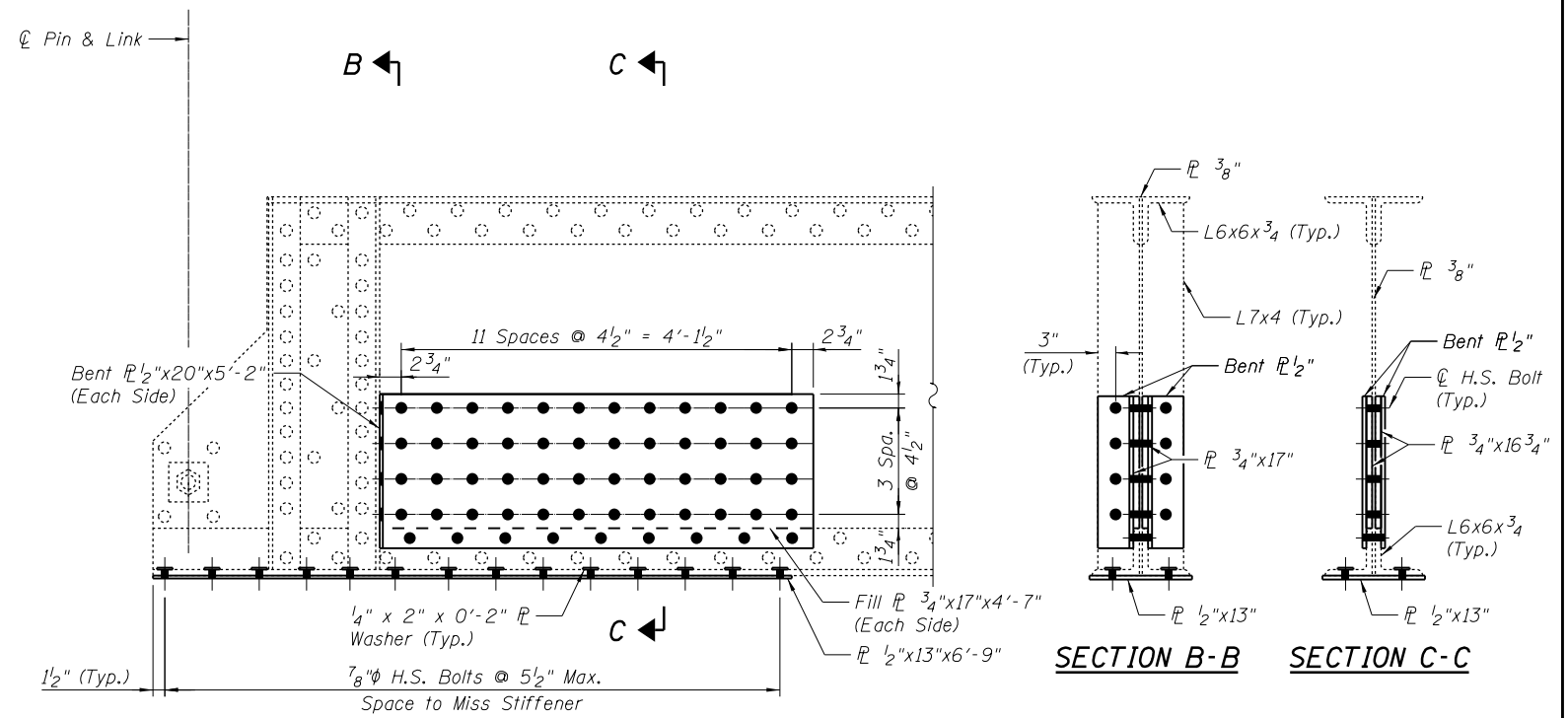
DETAIL 30 - LOCATION AND PLATE SIZE SUMMARY

SPAN	BEAM	REPAIR LOCATION	PLATE "A"	PLATE "B"	BOT. OF BOT. FLG. PLATE SIZE
19	D	4th Dia. from Bent 13	P 1/2" x 4 1/2" x 3'-10 3/4"	P 1/2" x 4 1/2" x 6'-7 3/4"	P 1/2" x 11 1/2" x 10'-9"
19	C	4th Dia. from Bent 13	P 1/2" x 4 1/2" x 3'-10 3/4"	P 1/2" x 4 1/2" x 7'-10 3/4"	P 1/2" x 11 1/2" x 12'-0"

Note: For this table, in referencing diaphragms, the first shall be on the pier or abutment.

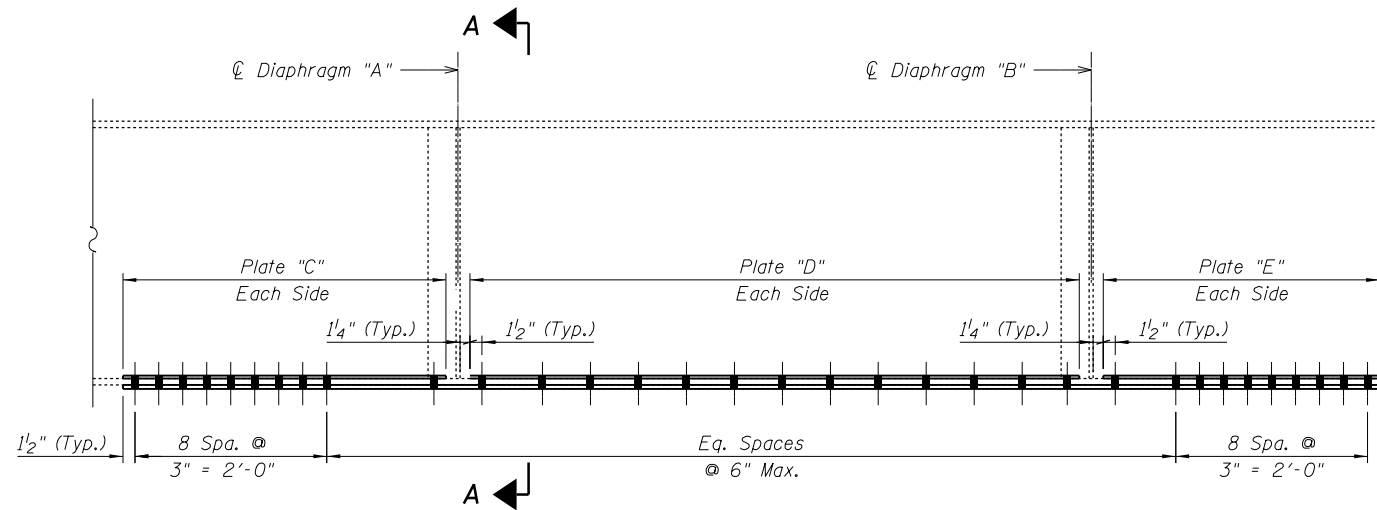


SECTION A-A



DETAIL 32

Span 7, Stringer D



DETAIL 31

See Table for Locations and Plate Dimensions

DETAIL 31 - LOCATION AND PLATE SIZE SUMMARY

SPAN	BEAM	DIAPHRAGM "A"	DIAPHRAGM "A"	PLATE "C"	PLATE "D"	PLATE "E"	BOT. OF BOT. FLG. PLATE SIZE
16	D	3rd Dia. from Bent 10	4th Dia. from Bent 10	P 1/2" x 4 1/2" x 4'-4 3/4"	P 1/2" x 4 1/2" x 17'-9 3/4"	P 1/2" x 4 1/2" x 3'-2 3/4"	P 1/2" x 11 3/4" x 25'-10 1/4"
16	A	2nd Dia. from Bent 10	3rd Dia. from Bent 10	P 1/2" x 6 1/2" x 13'-11 9/16"	P 1/2" x 6 1/2" x 17'-7 1/8"	P 1/2" x 6 1/2" x 9'-0 3/4"	P 1/2" x 16" x 41'-0 1/16"
18	A	3rd Dia. from Bent 12	4th Dia. from Bent 12	P 1/2" x 6 1/2" x 8'-6 3/4"	P 1/2" x 6 1/2" x 17'-7 1/8"	P 1/2" x 6 1/2" x 6'-9 1/8"	P 1/2" x 16" x 33'-4"
23	C	2nd Dia. from Bent 17	3rd Dia. from Bent 17	P 1/2" x 4 1/2" x 2'-3"	P 1/2" x 4 1/2" x 17'-1 1/8"	P 1/2" x 4 1/2" x 2'-4 3/4"	P 1/2" x 11 1/2" x 22'-1 1/8"

Note: For this table, in referencing diaphragms, the first shall be on the pier or abutment.

I:\Projects\4015550\015550_0001\90_CAD_Models_and_Sheets\04_CJ_Bridge\08150905-64H28-021-Details_9.dgn



USER NAME = patrisjm
DESIGNED - MJK
CHECKED - JAN
REVISOR - SB
DRAWN - JMP
CHECKED - SB
PLOT SCALE = 20.0000 '1' / in.
PLOT DATE = 1/21/2014

DESIGNED - MJK
CHECKED - JAN
REVISOR - SB
DRAWN - JMP
CHECKED - SB

STATE OF ILLINOIS
DEPARTMENT OF TRANSPORTATION

STRUCTURAL STEEL REPAIR DETAILS, SHEET 9
STRUCTURE NO. 081-9905

SHEET NO. 20 OF 33 SHEETS

F.A.P. RTE.	SECTION	COUNTY	TOTAL SHEETS	SHEET NO.
308	(3BRM)	ROCK ISLAND	47	33
C-92-090-12		CONTRACT NO. 64H28		

ILLINOIS FED. AID PROJECT