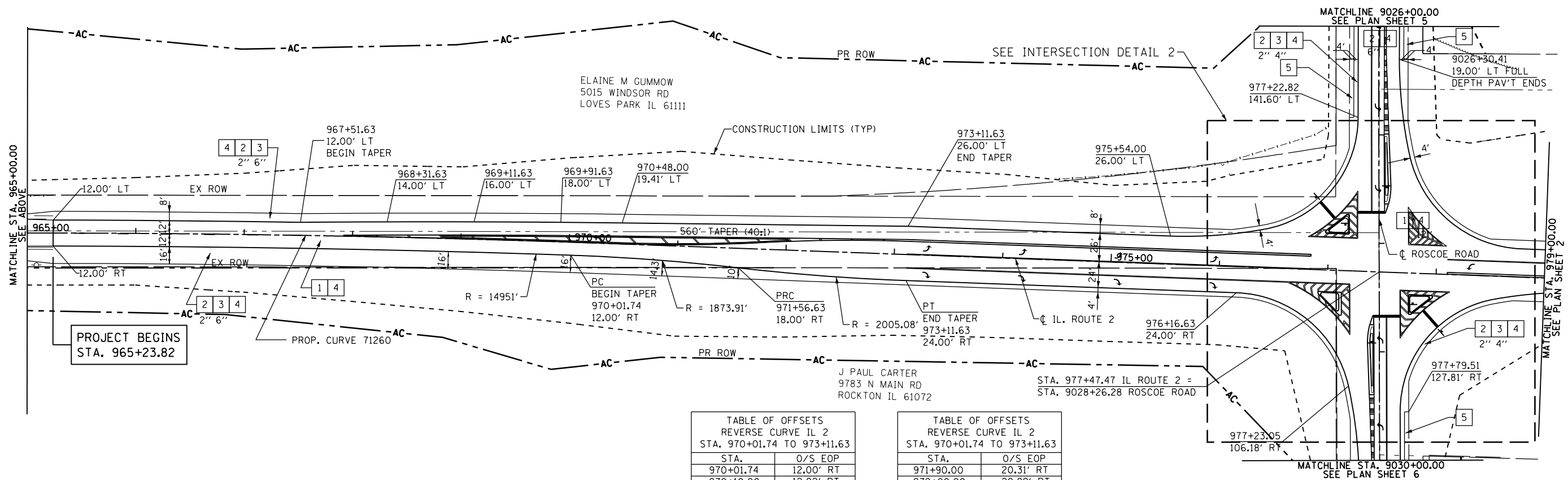
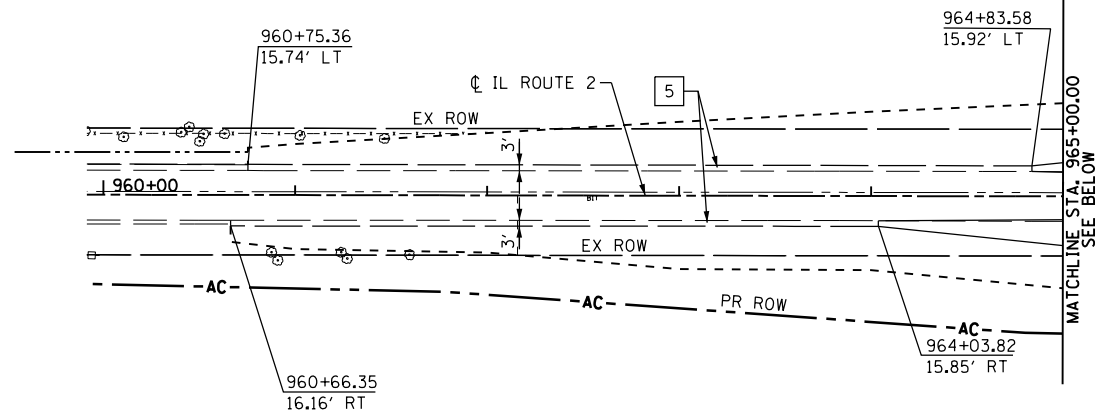


TABLE OF OFFSETS REVERSE CURVE IL 2 STA. 967+51.63 TO 970+48.00	
STA.	O/S EOP
967+51.63	12.00' LT
967+60.00	12.21' LT
967+70.00	12.46' LT
967+80.00	12.71' LT
967+90.00	12.96' LT
968+00.00	13.21' LT
968+10.00	13.46' LT
968+20.00	13.71' LT
968+30.00	13.96' LT
968+31.63	14.00' LT
968+40.00	14.21' LT
968+50.00	14.46' LT
968+60.00	14.71' LT
968+70.00	14.96' LT
968+80.00	15.21' LT
968+90.00	15.46' LT
969+00.00	15.71' LT
969+10.00	15.96' LT
969+11.63	16.00' LT
969+20.00	16.21' LT

TABLE OF OFFSETS REVERSE CURVE IL 2 STA. 967+51.63 TO 970+48.00	
STA.	O/S EOP
969+30.00	16.46' LT
969+40.00	16.71' LT
969+50.00	16.96' LT
969+60.00	17.21' LT
969+70.00	17.46' LT
969+80.00	17.71' LT
969+90.00	17.96' LT
969+91.63	18.00' LT
970+00.00	18.21' LT
970+10.00	18.46' LT
970+20.00	18.71' LT
970+30.00	18.96' LT
970+40.00	19.21' LT
970+48.00	19.41' LT



- KEY**
- 1 HOT-MIX ASPHALT PAVEMENT (FULL-DEPTH), 11" (2" POLYMERIZED HMA SURFACE COURSE, MIX "D", N70 9" HOT-MIX ASPHALT BINDER COURSE, IL-19.0, N70 SEE NOTE #2)
 - 2 HOT-MIX ASPHALT SURFACE COURSE, MIX "C", N50
 - 3 HOT-MIX ASPHALT SHOULDERS
 - 4 AGGREGATE SUBGRADE IMPROVEMENT (SEE SCHEDULE FOR VARIABLE THICKNESS AREAS)
 - 5 AGGREGATE SHOULDERS, TYPE A, 8"
 - 7 TOPSOIL 6" OR 12"
 - 8 AGGREGATE BASE COURSE, TYPE, 8"
 - 9 PIPE UNDERDRAIN, 4"
 - 10 INCIDENTAL HOT-MIX ASPHALT SURFACING (2" AT DRIVEWAYS)

TABLE OF OFFSETS REVERSE CURVE IL 2 STA. 970+01.74 TO 973+11.63	
STA.	O/S EOP
970+01.74	12.00' RT
970+10.00	12.02' RT
970+20.00	12.08' RT
970+30.00	12.19' RT
970+40.00	12.34' RT
970+50.00	12.54' RT
970+60.00	12.80' RT
970+70.00	13.10' RT
970+80.00	13.46' RT
970+90.00	13.88' RT
971+00.00	14.34' RT
971+10.00	14.86' RT
971+20.00	15.44' RT
971+30.00	16.07' RT
971+40.00	16.75' RT
971+50.00	17.48' RT
971+56.63	18.00' RT
971+60.00	18.26' RT
971+70.00	18.99' RT
971+80.00	19.67' RT

TABLE OF OFFSETS REVERSE CURVE IL 2 STA. 970+01.74 TO 973+11.63	
STA.	O/S EOP
971+90.00	20.31' RT
972+00.00	20.89' RT
972+10.00	21.42' RT
972+20.00	21.91' RT
972+30.00	22.34' RT
972+40.00	22.72' RT
972+50.00	23.05' RT
972+60.00	23.34' RT
972+70.00	23.57' RT
972+80.00	23.75' RT
972+90.00	23.88' RT
973+00.00	23.97' RT
973+10.00	24.00' RT
973+11.63	24.00' RT

FILE NAME =	USER NAME =	DESIGNED - RDT/GC	REVISED -
et:\pw\work\p\dtdot\undbladerr\d0331853\0264H70-shr-plan-01.dgn		DRAWN - RDT	REVISED -
	PLOT SCALE =	CHECKED - GC	REVISED -
	PLOT DATE =	DATE - 10/05/2012	REVISED -

**STATE OF ILLINOIS
DEPARTMENT OF TRANSPORTATION**

**ILLINOIS ROUTE 2
PLAN SHEET 1**

SCALE: 1"=50' SHEET NO. 32 OF 179 SHEETS STA. 965+23.82 TO STA. 979+00.00

F.A.P. RTE.	SECTION	COUNTY	TOTAL SHEETS	SHEET NO.
734	77R-1	WINNEBAGO	179	32
CONTRACT NO. 64H70				
ILLINOIS FED. AID PROJECT				