

PRE-STAGE 1 CONSTRUCTION

1. CONSTRUCT TEMPORARY PAVEMENT ALONG SOUTHBOUND IL ROUTE 2 SHOULDER USING TC&P STD 701326.
2. PLACE TEMPORARY CONCRETE BARRIER FROM STA. 970+82.57 TO STA. 974+81.58.

STAGE 1 TRAFFIC

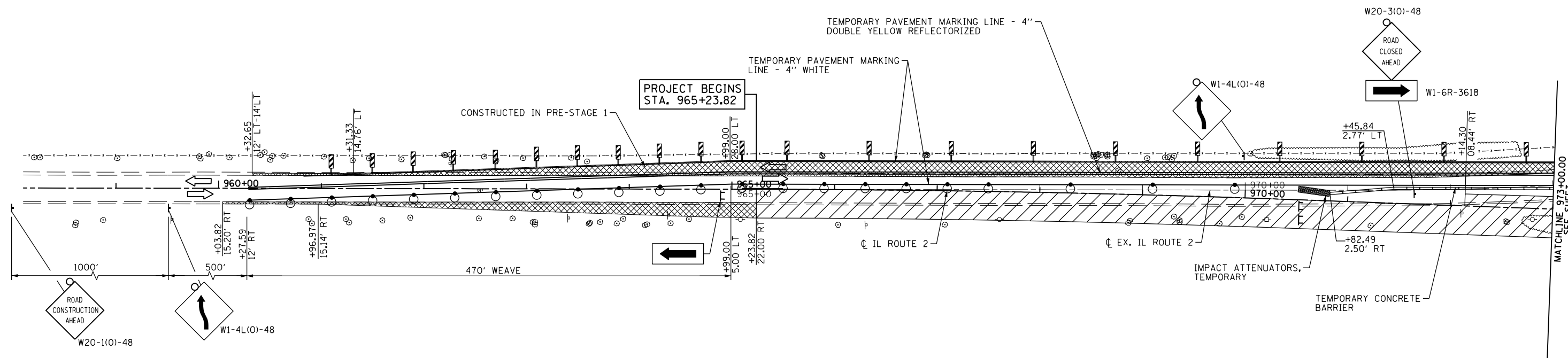
1. MAINTAIN IL ROUTE 2 TRAFFIC USING EXISTING IL ROUTE 2 AND TEMPORARY PAVEMENT CONSTRUCTED IN PRE-STAGE 1 USING TC&P STD 701331.
2. MAINTAIN TRAFFIC ON ROSCOE ROAD WEST OF IL ROUTE 2 INTERSECTION UNTIL EAST LEG OF IL RTE 2 IS CONSTRUCTED.
3. EAST LEG OF ROSCOE ROAD WILL BE CLOSED TO THROUGH TRAFFIC DURING STAGE 1 CONSTRUCTION USING THE DETOUR PLAN AND DISTRICT STD 40.1.

STAGE 1 CONSTRUCTION

1. CONSTRUCT EAST SIDE OF IL ROUTE 2 FROM STA. 965+23.82 TO STA. 974+99.14.
2. CONSTRUCT IL ROUTE 2 FROM STA. 974+99.14 TO STA. 1008+70.
3. CONSTRUCT TEMPORARY PAVEMENT ALONG NORTHBOUND IL ROUTE 2 SHOULDER FROM STA. 960+66.36 TO STA. 965+23.82.
4. CONSTRUCT TEMPORARY PAVEMENT AT NORTHBOUND IL ROUTE 2 CORNER ISLAND LOCATIONS.
5. CONSTRUCT TEMPORARY PAVEMENT AFTER CONSTRUCTING NORTHBOUND IL ROUTE 2 SHOULDER FROM STA. 978+39.44 TO STA. 980+66.08.
6. CONSTRUCT ROSCOE ROAD FROM 9027+92.41 TO 9039+60.
7. CONSTRUCT TEMPORARY CROSSOVER FROM 994+00 TO 1011+60.

GENERAL NOTES

1. THESE STAGING PLANS DEPICT A GENERAL SEQUENCE OF CONSTRUCTION FOR DEVELOPMENT OF THE CONTRACT DOCUMENTS. DEVIATIONS TO THE SEQUENCE OF CONSTRUCTION SHALL NOT BE PERMITTED WITHOUT PRIOR WRITTEN APPROVAL OF THE ENGINEER. TRAFFIC SHALL BE MAINTAINED THROUGH THE PROJECT AREA AT ALL TIMES.
2. THE STAGE CONSTRUCTION DRAWINGS PROVIDE FOR TEMPORARY SIGNS. IT MAY BE NECESSARY TO RELOCATE AND/OR REINSTALL TEMPORARY OR EXISTING SIGNS AS DIRECTED BY THE ENGINEER. THIS WORK SHALL BE INCLUDED IN THE COST OF THE APPLICABLE TRAFFIC CONTROL PAY ITEMS.
3. THE CONTRACTOR SHALL SUBMIT TO THE ENGINEER FOR REVIEW AND APPROVAL CONSTRUCTION PROCEDURES, SPECIAL SIGNING AND RELATED DETAILS FOR EACH CONSTRUCTION STAGE, DETAILS OF TRANSITIONS FROM ONE STAGE TO THE NEXT AND ANY SUB-STAGES OF CONSTRUCTION.
4. CONTACT MR. KURT GLAZIER TWO WEEKS BEFORE TEMPORARY PAVEMENT MARKING LAYOUT AT CENTERLINE FOR STAGE 3 TRAFFIC.
5. SEE SIGNING PLANS FOR LOCATION OF PROPOSED PERMANENT SIGNS.
6. ACCESS TO PROPERTIES ALONG IL ROUTE 2 AND ROSCOE ROAD SHALL BE MAINTAINED AT ALL TIMES.
7. OFFSETS FOR BARRIER WALL ARE TO THE TRAFFIC SIDE OF THE WALL.
8. WHEN CONSTRUCTING FULL DEPTH PAVEMENT, CONSTRUCT UP TO AND INCLUDING BINDER COURSE. SURFACE COURSE SHALL BE CONSTRUCTED IN STAGE 4.
9. REFER TO STANDARD 701331 FOR ADDITIONAL INFORMATION.
10. NO DROP-OFF GREATER THAN 12" SHALL BE WITHIN 3' OF TRAFFIC FOR GREATER THAN 48 HOURS. IF THE DROP-OFF IS NOT CORRECTED IN THE TIME-FRAME, SAID AREA SHALL BE PROTECTED WITH BARRIER WALL AND IMPACT ATTENUATORS, APPROVED BY IDOT AT NO ADDITIONAL COST TO IDOT.



LEGEND

- CONSTRUCTION ZONE THIS STAGE
- DIRECTION OF TRAVEL
- TEMPORARY PAVEMENT (SEE TYPICAL SECTION FOR WIDENING)
- BARRICADE, TYPE III
- DRUM WITH STEADY BI-DIRECTIONAL BURNING LIGHT
- ARROW BOARD
- DIRECTION INDICATOR BARRICADE
- VERTICAL PANEL
- IMPACT ATTENUATOR
- BARRIER WALL

FILE NAME = c:\pwork\pwork\dot\undbladerr\d0331856\0264h70-sh-t-staging01-01.dgn	USER NAME = RDT	DESIGNED - RDT	REVISED -	STATE OF ILLINOIS DEPARTMENT OF TRANSPORTATION	ILLINOIS ROUTE 2 STAGE 1		F.A.P. RTE. 734	SECTION 77R-1	COUNTY WINNEBAGO	TOTAL SHEETS 179	SHEET NO. 48	
PLOT SCALE =	CHECKED - JAC	REVISED -	REVISED -		SCALE: 1"=50'	SHEET NO. 48 OF 179 SHEETS	STA. 960+00 TO STA. 973+00	CONTRACT NO. 64H70				
PLOT DATE =	DATE - 10/05/2012	REVISED -	REVISED -		ILLINOIS FED. AID PROJECT							