

STATE OF ILLINOIS
DEPARTMENT OF TRANSPORTATION
DIVISION OF HIGHWAYS
PROPOSED
HIGHWAY PLANS

F.A.I. ROUTE 57 (I-57)
SECTION (38-5VB)BP

CLEANING AND PAINTING STRUCTURAL STEEL
STRUCTURE NO.'S 038-0005 (NB) AND 038-0006 (SB)
IROQUOIS COUNTY
C-93-110-13

F.A.I. RTE.	SECTION	COUNTY	TOTAL SHEETS	SHEET NO.
57	(38-5VB)BP	IROQUOIS	9	1
		ILLINOIS	CONTRACT NO. 66D10	

INDEX OF SHEETS

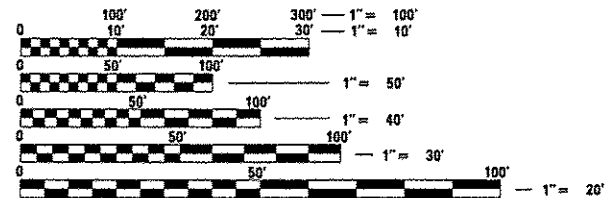
- 1 COVER SHEET
- 2 GENERAL NOTES
- 3 SUMMARY OF QUANTITIES
- 4 TYPICAL SECTIONS
- 5 TRAFFIC CONTROL AND PROTECTION STANDARD 701400 (SPECIAL)
- 6 TRAFFIC CONTROL AND PROTECTION STANDARD 701402 (SPECIAL)
- 7 TYPICAL PAVEMENT MARKINGS
- 8-9 EXISTING STRUCTURE PLANS

STANDARDS

- 000001-06 STANDARD SYMBOLS, ABBREVIATIONS AND PATTERNS
- 001006 DECIMAL OF AN INCH AND OF A FOOT
- 635011-02 REFLECTOR MARKER AND MOUNTING DETAILS
- 701101-04 OFF-ROAD OPERATIONS MULTILANE, 15' (4.5m) TO 24" (600m) FROM PAVEMENT EDGE
- 701106-02 OFF-ROAD OPERATIONS, MULTILANE, MORE THAN 15' (4.5m) AWAY
- 701426-06 LANE CLOSURE, MULTILANE INTERMITTENT OR MOVING OPERATION, FOR SPEEDS > 45 MPH
- 701901-03 TRAFFIC CONTROL DEVICES
- 704001-07 TEMPORARY CONCRETE BARRIER

PROJECT LOCATION

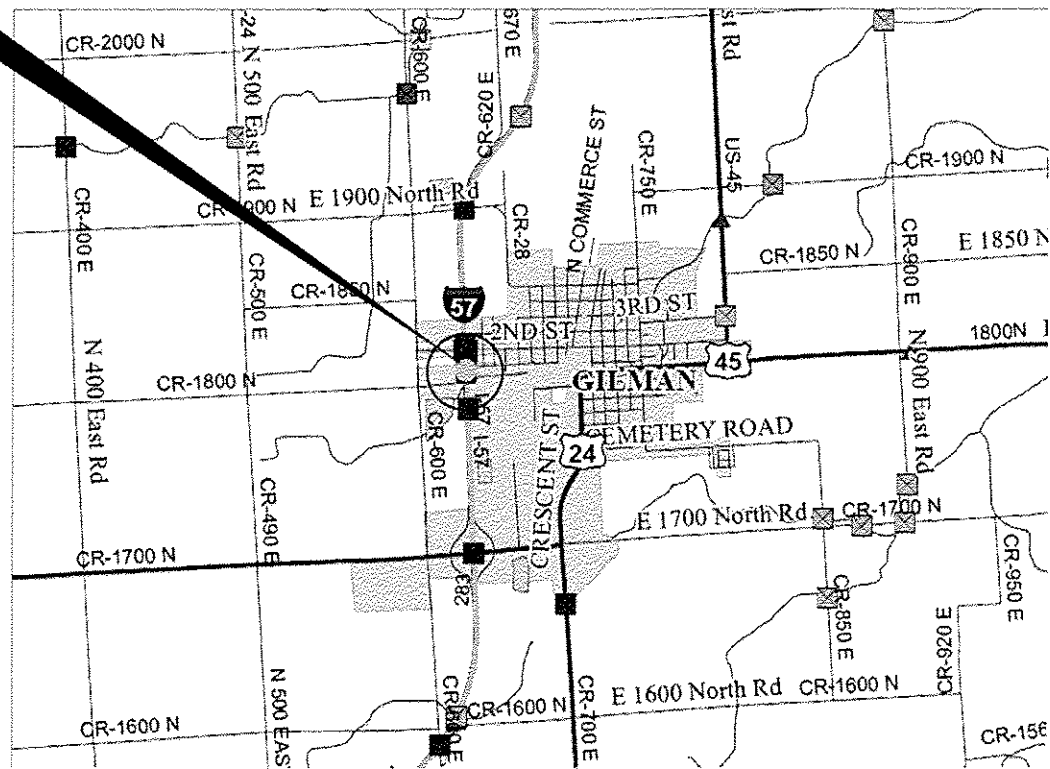
SN: 038-0005 (NB) AND SN: 038-0006 (SB)
CARRYING FAI 57 (I-57) OVER T.P. & W. RR
STA. 592 + 77.57



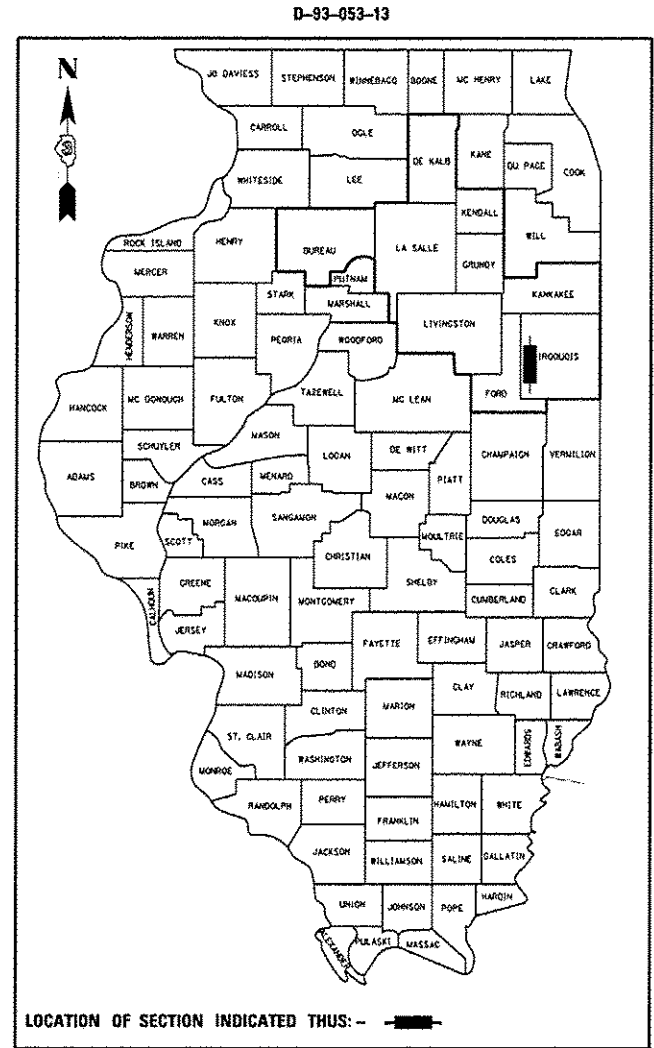
FULL SIZE PLANS HAVE BEEN PREPARED USING STANDARD ENGINEERING SCALES. REDUCED SIZED PLANS WILL NOT CONFORM TO STANDARD SCALES. IN MAKING MEASUREMENTS ON REDUCED PLANS, THE ABOVE SCALES MAY BE USED.

J.U.L.I.E.
 JOINT UTILITY LOCATION INFORMATION FOR EXCAVATION
 1-800-892-0123
 OR 811

DISTRICT 3 NO. (815) 434-6131
PROJECT ENGINEER: JOE KANNEL, P.E.
UNIT CHIEF: RON WOODSHANK
TOWNSHIP: DOUGLAS
CONTRACT NO. 66D10



LOCATION MAP NOT TO SCALE
POINT LOCATION



FUNCTIONAL CLASSIFICATION
URBAN INTERSTATE
FAI 57 (I-57)
2011 ADT = 1550
P.V. = 89.03%
M.U. = 3.23%
S.U. = 7.74%

STATE OF ILLINOIS
 DEPARTMENT OF TRANSPORTATION
 DIVISION OF HIGHWAYS

SUBMITTED Paul A. Looney 12-9-2013
 DEPUTY DIRECTOR OF HIGHWAYS, REGION ENGINEER

John D. Baranzelli, P.E. 12-24-2014
 ENGINEER OF DESIGN AND ENVIRONMENT

Amer Osman, P.E. 12-24-2014
 DIRECTOR OF HIGHWAYS, CHIEF ENGINEER

PRINTED BY THE AUTHORITY
OF THE STATE OF ILLINOIS

GENERAL NOTES

THE CONTRACTOR SHALL NOT CLOSE A LANE IN THE EASTBOUND AND WESTBOUND TRAFFIC LANES AT THE SAME TIME UNLESS APPROVED IN WRITING BY THE ENGINEER.

AS PER ARTICLE 107.20 OF THE STANDARD SPECIFICATIONS WHENEVER PUBLIC OR PRIVATE PROPERTY IS DAMAGE OR DESTROYED DUE TO THE OPERATIONS OF THE CONTRACTOR, THE CONTRACTOR SHALL, AT NO ADDITIONAL COST TO THE DEPARTMENT, RESTORE SUCH PROPERTY TO A CONDITION EQUAL TO THE EXISTING BEFORE SUCH DAMAGE OR INJURY WAS DONE BY REPAIRING, REBUILDING, OR REPLACING IT AS MAY BE DIRECTED, OR THE CONTRACTOR SHALL OTHERWISE MAKE GOOD SUCH DAMAGE OR DESTRUCTION IN AN ACCEPTABLE MANNER.

PLAN DIMENSIONS AND DETAILS RELATIVE TO EXISTING PLANS ARE SUBJECT TO ROUTINE VARIATIONS. THE CONTRACTOR SHALL FIELD VERIFY EXISTING DIMENSIONS AND DETAILS AFFECTING NEW CONSTRUCTION AND MAKE NECESSARY APPROVED ADJUSTMENT PRIOR TO CONSTRUCTION OR ORDERING OF MATERIALS. SUCH VARIATIONS SHALL NOT BE CAUSE FOR ADDITIONAL COMPENSATION FOR A CHANGE IN THE SCOPE OF THE WORK. HOWEVER, THE CONTRACTOR WILL BE PAID FOR THE QUANTITY FURNISHED BASED UPON THE UNIT BID FOR THE WORK.

FOR STABILIZATION, ALL TYPE III BARRICADES SHALL REQUIRE A MINIMUM OF FOUR SAND BAGS PER BARRICADE.

THE CONTRACTOR SHALL BE RESPONSIBLE FOR PROTECTING UTILITY PROPERTY FROM CONSTRUCTION OPERATIONS AS OUTLINED IN ARTICLE 107.31 OF THE STANDARD SPECIFICATIONS. THE "JULIE" NUMBER IS 1-800-892-0123. A MINIMUM OF FORTY-EIGHT (48) HOURS ADVANCE NOTICE IS REQUIRED.

WHERE SECTION OR SUBSECTION MONUMENTS ARE ENCOUNTERED, THE ENGINEER SHALL BE NOTIFIED BEFORE SUCH MONUMENTS ARE REMOVED. THE CONTRACTOR SHALL PROTECT AND CAREFULLY PRESERVE ALL MONUMENTS UNTIL AN AUTHORIZED SURVEYOR OR AGENT HAS WITNESSED OR OTHERWISE REFERENCED THEIR LOCATION. THE CONTRACTOR SHALL BE RESPONSIBLE FOR HAVING AN AUTHORIZED SURVEYOR REESTABLISH ANY SECTION OR SUBSECTION MONUMENTS DESTROYED BY HIS OPERATIONS.

ANY REFERENCE TO A STANDARD IN THESE PLANS SHALL BE INTERPRETED TO MEAN THE EDITION AS INDICATED BY THE SUBNUMBER LISTED ON THE INDEX OF SHEETS OR THE COPY OF THE STANDARD INCLUDED IN THESE PLANS.

COMMITMENTS

NONE.

DATE: 12-9-13

PREPARED BY: [Signature]
DISTRICT STUDIES & PLANS ENGINEER

EXAMINED BY: [Signature]
DISTRICT CONSTRUCTION ENGINEER

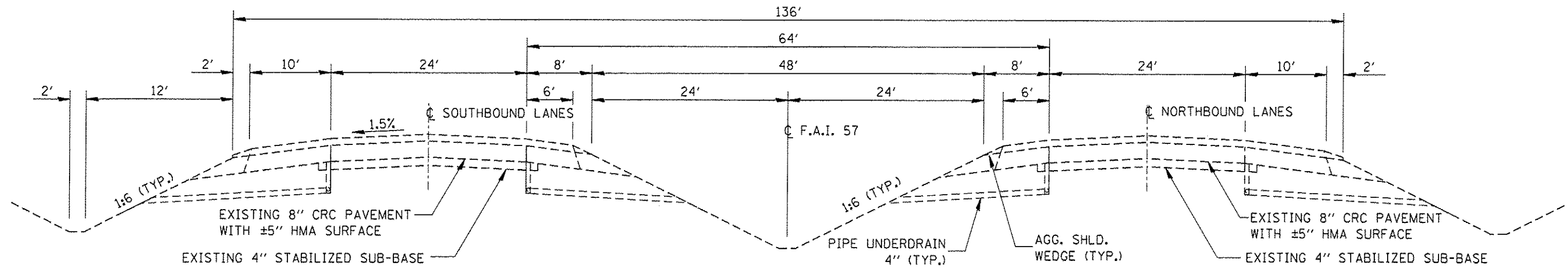
[Signature]
DISTRICT MATERIALS ENGINEER

[Signature]
DISTRICT OPERATIONS ENGINEER

FILE NAME *	USER NAME * Patel,J	DESIGNED - R WOODSHANK	REVISED -	STATE OF ILLINOIS DEPARTMENT OF TRANSPORTATION	GENERAL NOTES	F.A.I. RTE.	SECTION	COUNTY	TOTAL SHEETS	SHEET NO.	
c:\pwork\pwork\patel\034255\0366	18-shr-details.dgn	DRAWN - E JAUCH	REVISED -			57	(38-5VB)BP	IROQUOIS	9	2	
#MODELNAME#	PLOT SCALE * 100.0000 ** in.	CHECKED - Y PATEL	REVISED -			CONTRACT NO. 66D10					
	PLOT DATE * 12/9/2013	DATE -	REVISED -			SCALE: NONE	SHEET NO. 1 OF 1 SHEETS	STA.	TO STA.	ILLINOIS FED. AID PROJECT	

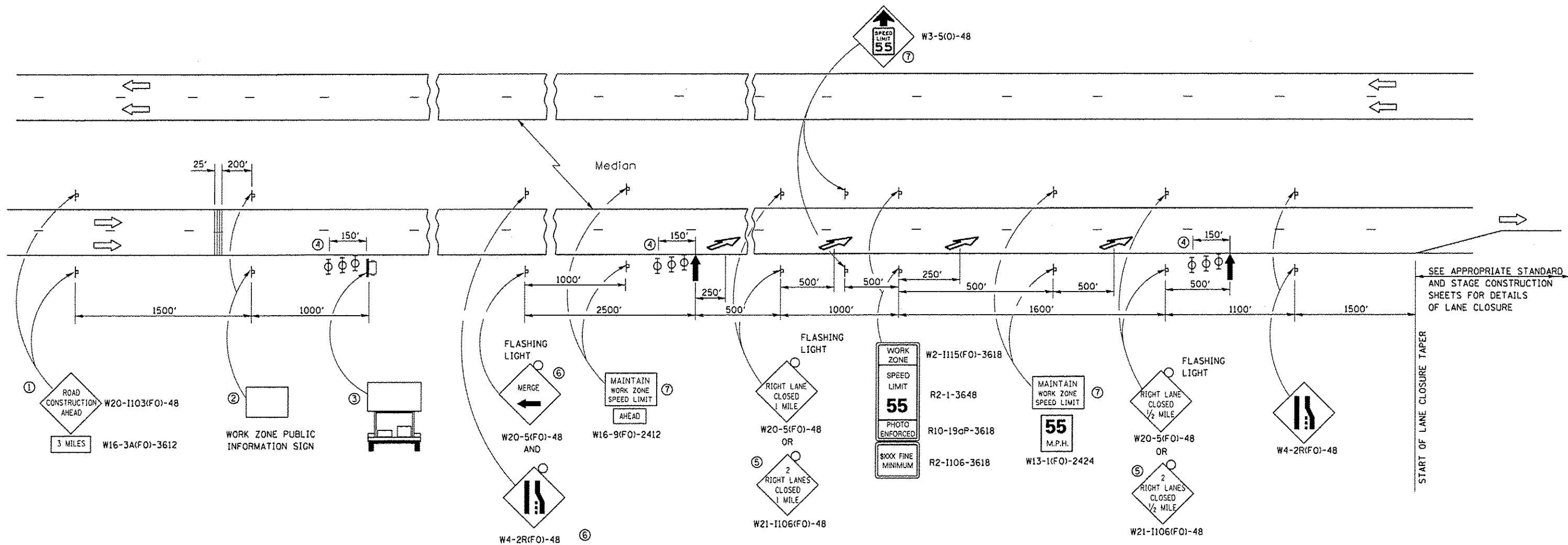
CODE NO.	ITEM	UNIT	TOTAL QUANTITY	CONSTR. CODE
				STATE FUNDS 100% STATE STRUCTURE 0014 RURAL
67100100	MOBILIZATION	L SUM	1	1
70400100	TEMPORARY CONCRETE BARRIER	FOOT	365	365
70400200	RELOCATE TEMPORARY CONCRETE BARRIER	FOOT	1095	1095
70600250	IMPACT ATTENUATORS, TEMPORARY (NON-REDIRECTIVE), TEST LEVEL 3	EACH	1	1
70600350	IMPACT ATTENUATORS, RELOCATE (NON-REDIRECTIVE), TEST LEVEL 3	EACH	3	3
* 78009006	MODIFIED URETHANE PAVEMENT MARKING - LINE 6"	FOOT	1000	1000
78300100	PAVEMENT MARKING REMOVAL	SQ FT	500	500
X5067501	BRIDGE CLEANING AND PAINTING WARRANTY NUMBER 1	L SUM	1	1
X5067502	BRIDGE CLEANING AND PAINTING WARRANTY NUMBER 2	L SUM	1	1
X7010208	TRAFFIC CONTROL AND PROTECTION, STANDARD 701402 (SPECIAL)	EACH	2	2
Z0007101	CONTAINMENT AND DISPOSAL OF LEAD PAINT CLEANING RESIDUES NO. 1	L SUM	1	1
Z0007102	CONTAINMENT AND DISPOSAL OF LEAD PAINT CLEANING RESIDUES NO. 2	L SUM	1	1
Z0010501	CLEANING AND PAINTING STEEL BRIDGE NO. 1	L SUM	1	1
Z0010502	CLEANING AND PAINTING STEEL BRIDGE NO. 2	L SUM	1	1
Z0048665	RAILROAD PROTECTIVE LIABILITY INSURANCE	L SUM	1	1

* SPECIALITY ITEMS



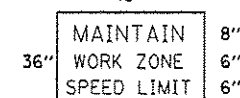
TYPICAL SECTION

FILE NAME *	USER NAME * Patel,yj	DESIGNED - R WOODSHANK	REVISED -	STATE OF ILLINOIS DEPARTMENT OF TRANSPORTATION	TYPICAL SECTION				F.A.I. RTE.	SECTION	COUNTY	TOTAL SHEETS	SHEET NO.
c:\pwwork\pwwork\patel,yj\d0342554\0366818-shr-details.dgn		DRAWN - E JAUCH	REVISED -		57	(3B-5VB)BP	IROQUOIS	9	4				
PLOT SCALE * 1/8"=1'-0"		CHECKED - Y PATEL	REVISED -		CONTRACT NO. 66D10				ILLINOIS FED. AID PROJECT				
PLOT DATE * 12/9/2013		DATE -	REVISED -		SCALE:	SHEET NO. 1 OF 1 SHEETS	STA.	TO STA.					



- ① THE ROAD CONSTRUCTION AHEAD SIGN SHALL BE LOCATED 3 MILES IN ADVANCE OF THE PROJECT LIMITS.
- ② THE MESSAGE AND SIZE OF THE WORK ZONE PUBLIC INFORMATION SIGN SHALL BE AS SPECIFIED BY THE DEPARTMENT.
- ③ TO BE PLACED IN THE MEDIAN WHEN FEASIBLE. THE MESSAGE BOARD SHALL BE USED TO DISPLAY STATUS OF LANES WITHIN THE PROJECT. THE PRIMARY MESSAGES SHALL BE:
"RIGHT LANE CLOSED" / " x MILES AHEAD"
"LEFT LANE CLOSED" / " x MILES AHEAD"
"ALL LANES OPEN"
- ④ THREE, TYPE II BARRICADES, DRUMS, OR VERTICAL BARRICADES AT 50' CENTERS.
- ⑤ THIS SIGN SHALL BE USED WHEN 2 LANES ARE CLOSED.
- ⑥ WHEN THE LEFT LANE IS CLOSED, SWITCH THESE TWO SIGNS AND THE DIRECTION OF THE MERGE ARROW.
- ⑦ THIS SIGN SHALL ONLY BE USED IF THE EXISTING SPEED LIMIT IS GREATER THAN 65 MPH.

⑦ 48"x36" FLUORESCENT ORANGE SIGN WITH BLACK LETTERS.



- ↑ ARROW BOARD
- PORTABLE CHANGEABLE MESSAGE SIGN
- ⊥ SIGN
- ⊙ TYPE II BARRICADE, DRUM, OR VERTICAL BARRICADE WITH MONODIRECTIONAL FLASHING LIGHT
- ↘ LANE DROP ARROW - SEE STANDARD 780001
- ▤ TEMPORARY RUMBLE STRIPS

GENERAL NOTE:

THIS STANDARD IS USED WHERE AT ANY TIME A LANE IS CLOSED ON A FREEWAY/EXPRESSWAY.

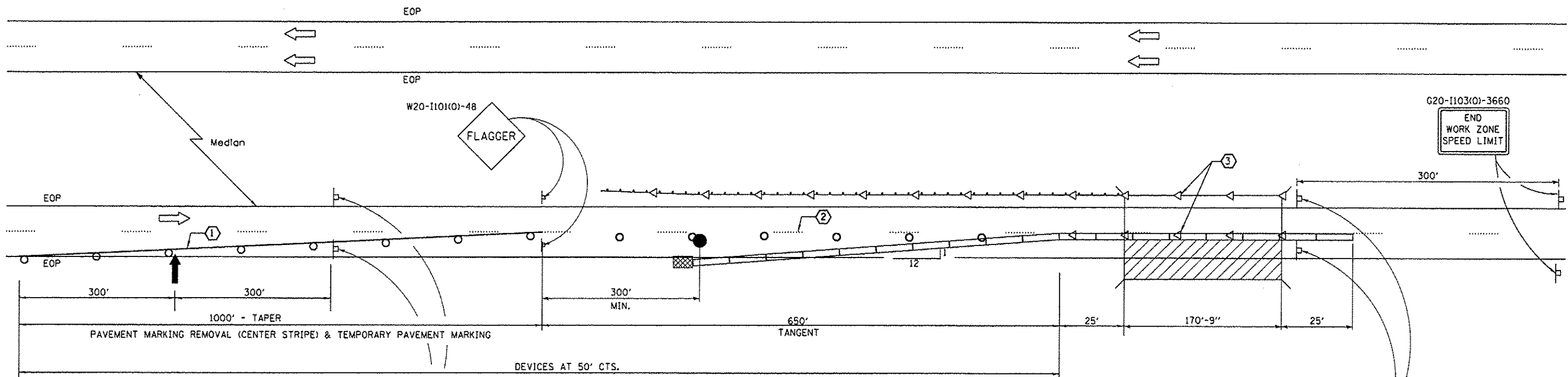
WHEN THE LEFT LANE IS CLOSED, LEFT LANE CLOSED SIGNS SHALL BE SUBSTITUTED FOR THE RIGHT LANE CLOSED SIGNS.

THE FIRST TWO SIGNS AND THE MESSAGE BOARD ARE STATIONARY. THE OTHER SIGNS AND ARROWBOARDS SHALL BE MOVED AS NECESSARY TO MAINTAIN THE REQUIRED DISTANCE FROM THE START OF THE LANE CLOSURE TAPER(S).

SEE SPECIAL PROVISIONS.

ALL DIMENSIONS ARE IN INCHES UNLESS OTHERWISE SHOWN.

FILE NAME *	USER NAME * Patel,yj	DESIGNED - R WOODSHANK	REVISED -	STATE OF ILLINOIS DEPARTMENT OF TRANSPORTATION	STANDARD 701400 (SPECIAL)	F.A.I. RTE.	SECTION	COUNTY	TOTAL SHEETS	SHEET NO.
at:\pw\work\pvidot\patel,yj\d0342954\0366818-sht-details.dgn	DRAWN - E JAUCH	REVISED -	57			(38-5VBIBP	IROQUOIS	9	5	
PLOT SCALE = 1/8" = 1'-0"	CHECKED - Y PATEL	REVISED -								
PLOT DATE = 12/9/2013	DATE -	REVISED -								
						SCALE:	SHEET NO. 1 OF 1 SHEETS	STA.	TO STA.	ILLINOIS FED. AID PROJECT

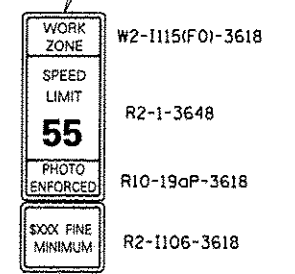
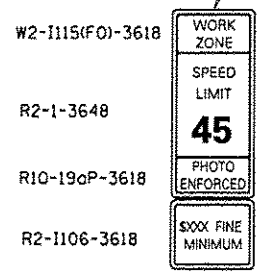


SEE STANDARD 701400 (SPECIAL) FOR APPROACH LANE CLOSURE SIGNING

① TEMPORARY PAVEMENT MARKING TAPE SHALL BE PLACED THROUGHOUT THE TAPER. EDGE LINE SHALL BE WHITE AND THE LEFT EDGE LINE SHALL BE YELLOW.

② EXISTING PAVEMENT MARKING

③ BARRIER WALL/GUARDRAIL MARKERS AT 25'. MARKERS ON RIGHT SHALL BE CRYSTAL AND MARKERS ON LEFT SHALL BE AMBER, COST INCLUDED WITH TEMPORARY CONCRETE BARRIER.



SYMBOLS

- ↑ ARROW BOARD
- ▨ WORK AREA
- ⊢ SIGN
- TRAFFIC CONTROL DRUM WITH STEADY BURN MONODIRECTIONAL LIGHT
- ▬ TEMPORARY CONCRETE BARRIER
- ◁ MONODIRECTIONAL BARRIER WALL/GUARDRAIL MARKER
- ▩ IMPACT ATTENUATOR

GENERAL NOTES

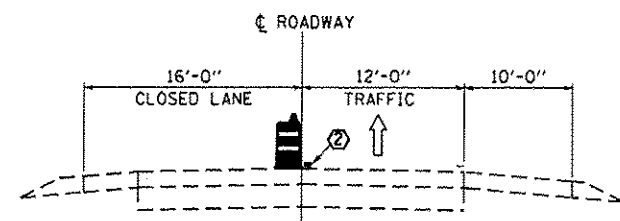
THIS STANDARD IS USED WHERE AT ANY TIME ANY VEHICLE, EQUIPMENT, WORKERS OR THEIR ACTIVITIES WILL ENCROACH ON THE PAVEMENT OR ON THE SHOULDER WITHIN 24 INCHES OF THE EDGE OF PAVEMENT FOR DAYLIGHT OPERATION EXCEEDING ONE DAY AND WHERE TEMPORARY CONCRETE BARRIER IS UTILIZED.

THIS STANDARD MUST BE USED IN COMBINATION WITH STANDARD 701400 (SPECIAL).

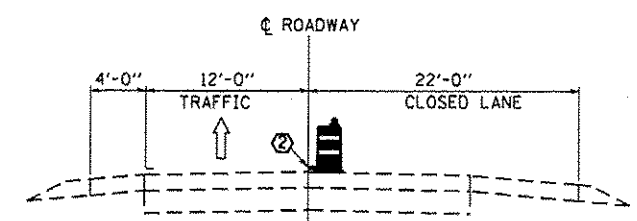
WHEN WORK IS BEING PERFORMED IN THE LEFT LANE, THE SET UP WOULD BE A MIRROR IMAGE TO WHAT IS SHOWN.

FLAGGER, FLAGGER SIGNS AND SPEED LIMIT SIGNS SHALL BE REQUIRED WHENEVER TEMPORARY CONCRETE BARRIER IS NOT IN PLACE, WHEN TEMPORARY CONCRETE BARRIER IS IN PLACE, THE FLAGGER SIGNS SHALL BE REMOVED OR COVERED AND THE FLAGGER NOT REQUIRED.

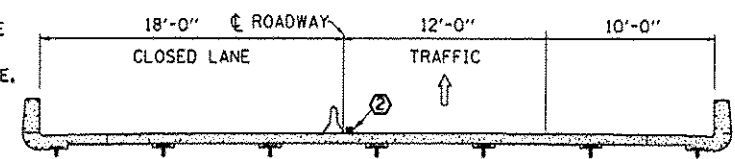
TEMPORARY CONCRETE BARRIER SHALL BE ACCORDING TO STANDARD 704001.



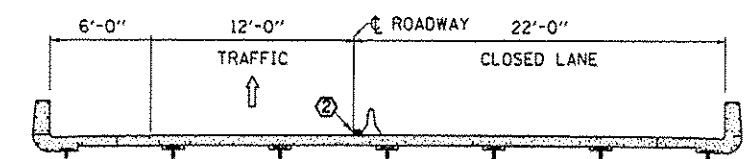
LEFT LANE CLOSURE
LOOKING IN DIRECTION OF TRAFFIC



RIGHT LANE CLOSURE
LOOKING IN DIRECTION OF TRAFFIC

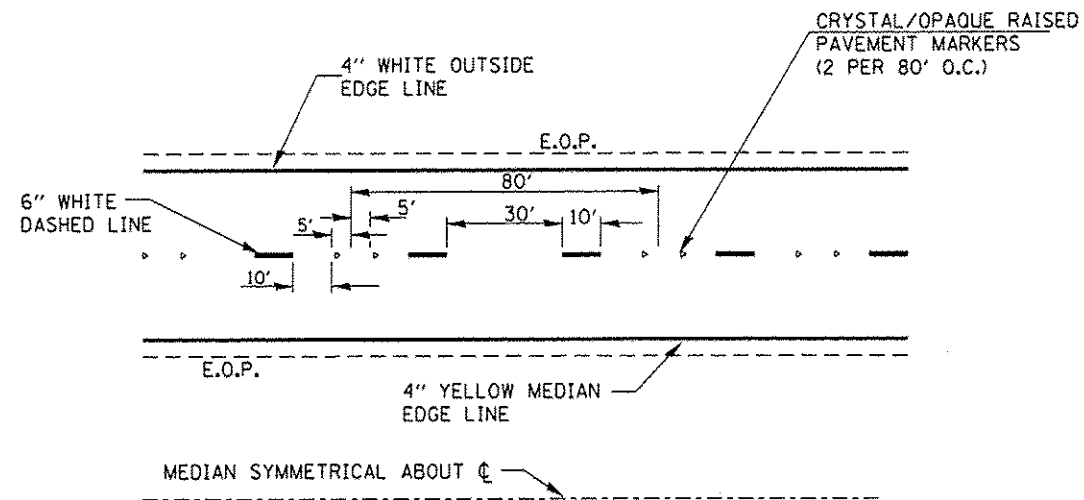


LEFT LANE CLOSURE
LOOKING IN DIRECTION OF TRAFFIC

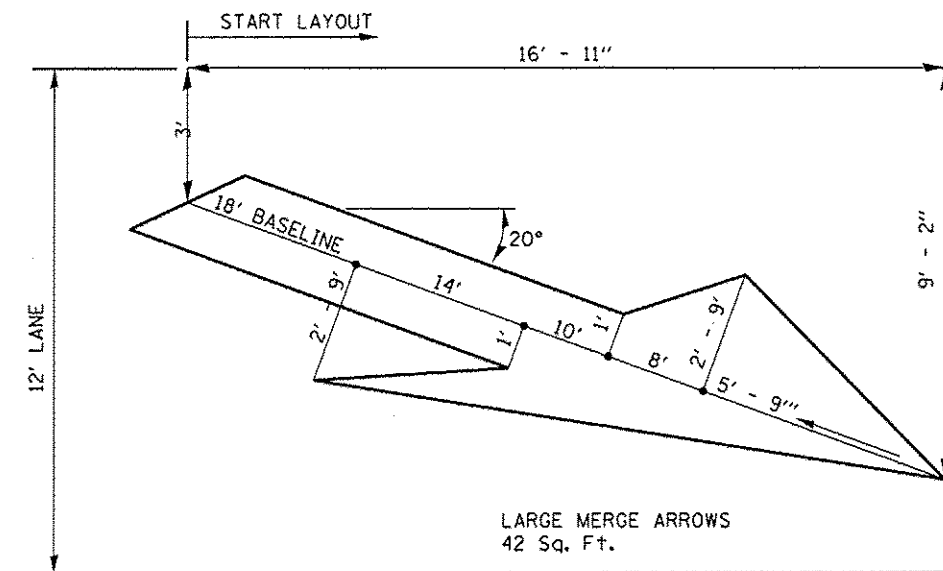


RIGHT LANE CLOSURE
LOOKING IN DIRECTION OF TRAFFIC

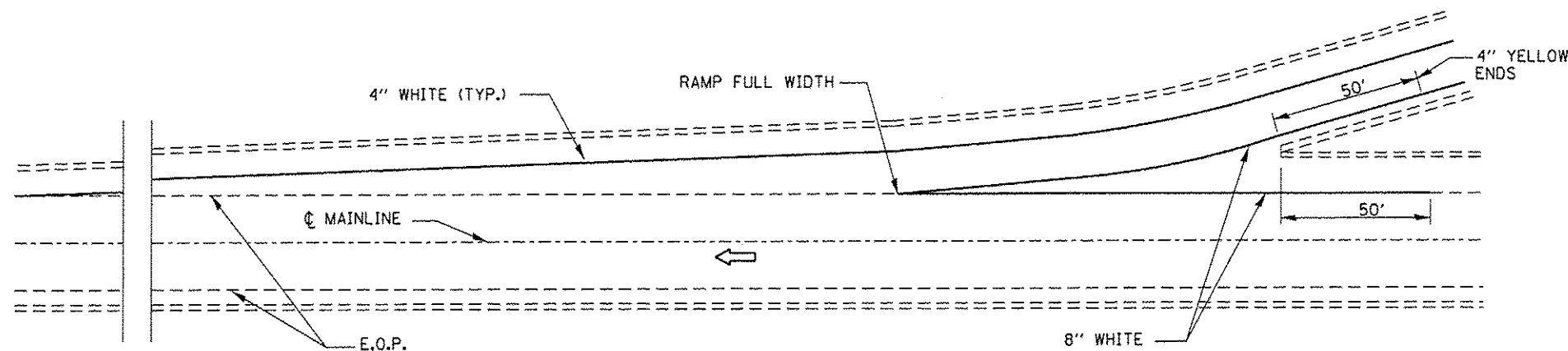
FILE NAME *	USER NAME * Poteluj	DESIGNED - R WOODSHANK	REVISED -	STATE OF ILLINOIS DEPARTMENT OF TRANSPORTATION	TRAFFIC CONTROL AND PROTECTION STANDARD 701402 (SPECIAL)	F.A.I. RTE.	SECTION	COUNTY	TOTAL SHEETS	SHEET NO.
c:\pw_work\pwwork\poteluj\08342554\036610-shr-details.dgn	DRAWN - E JAUCH	REVISED -	57			(38-5VB)BP	IROQUOIS	9	6	
PLOT SCALE * 1/8"=1'-0" / in.	CHECKED - Y PATEL	REVISED -	CONTRACT NO. 66D10							
PLOT DATE * 12/9/2013	DATE -	REVISED -	ILLINOIS FED. AID PROJECT							
				SCALE:	SHEET NO. 1 OF 1 SHEETS	STA.	TO STA.			



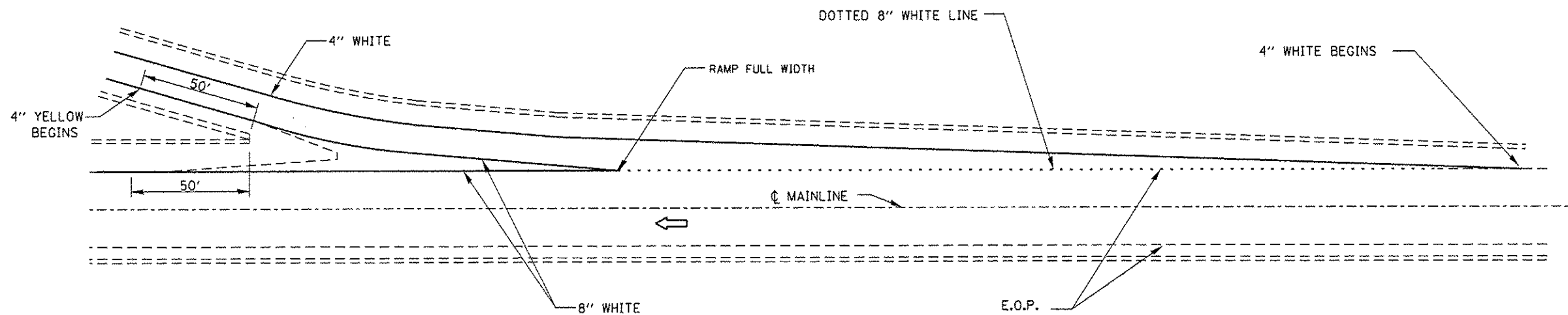
TYPICAL PAVEMENT MARKINGS



LANE DROP ARROW

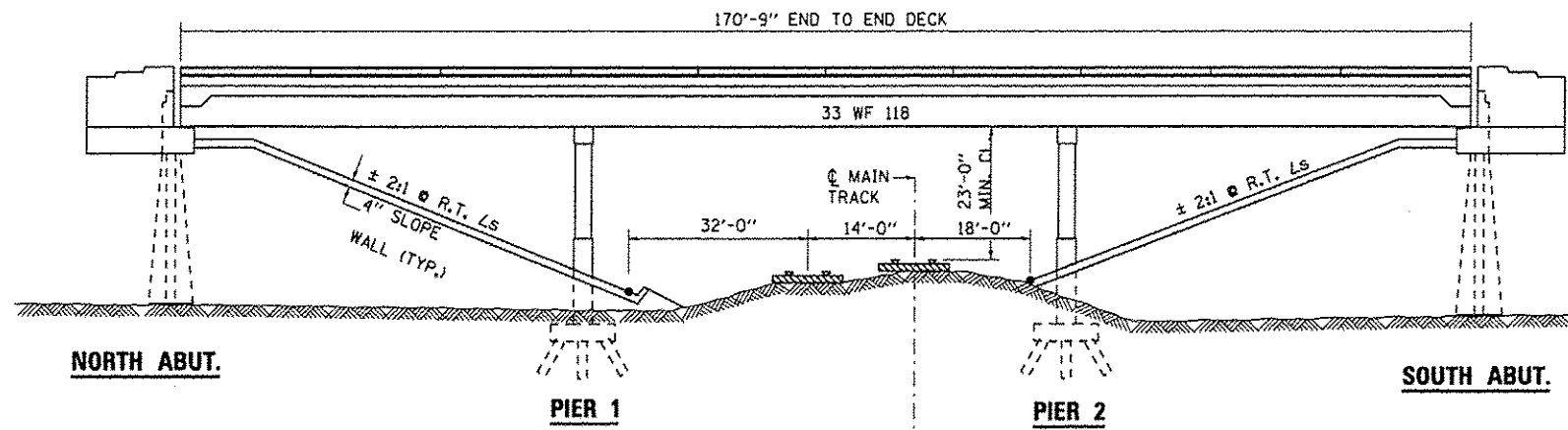


TYPICAL PAVEMENT MARKING FOR ENTRANCE RAMP TERMINALS

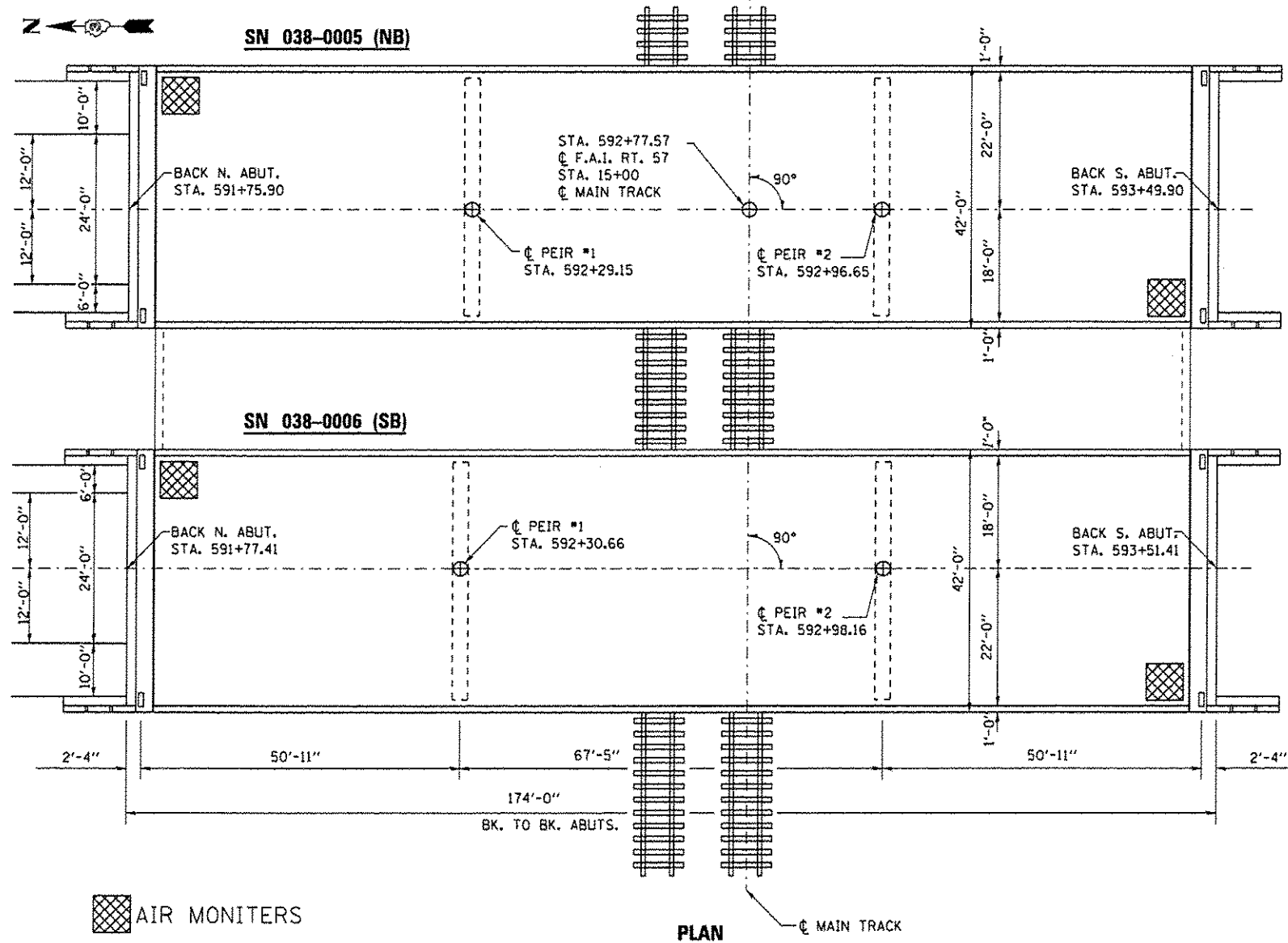


TYPICAL PAVEMENT MARKINGS FOR EXIT RAMP TERMINALS

FILE NAME *	USER NAME * Patelyj	DESIGNED - RON WOODSHANK	REVISED -	STATE OF ILLINOIS DEPARTMENT OF TRANSPORTATION	TYPICAL PAVEMENT MARKING		P.A.I. RTE.	SECTION	COUNTY	TOTAL SHEETS	SHEET NO.
c:\pwork\pwork\patelyj\0342554\0366318-sht-details.dgn	PLOT SCALE * 1/8"=1'-0"	DRAWN - RON WOODSHANK	REVISED -				57	138-SVBIBP	IROQUOIS	9	7
	PLOT DATE * 12/9/2013	CHECKED -	REVISED -		SCALE:	SHEET NO. 1 OF 1 SHEETS	STA.	TO STA.	CONTRACT NO. 66D10		
		DATE -	REVISED -		ILLINOIS FED. AID PROJECT						



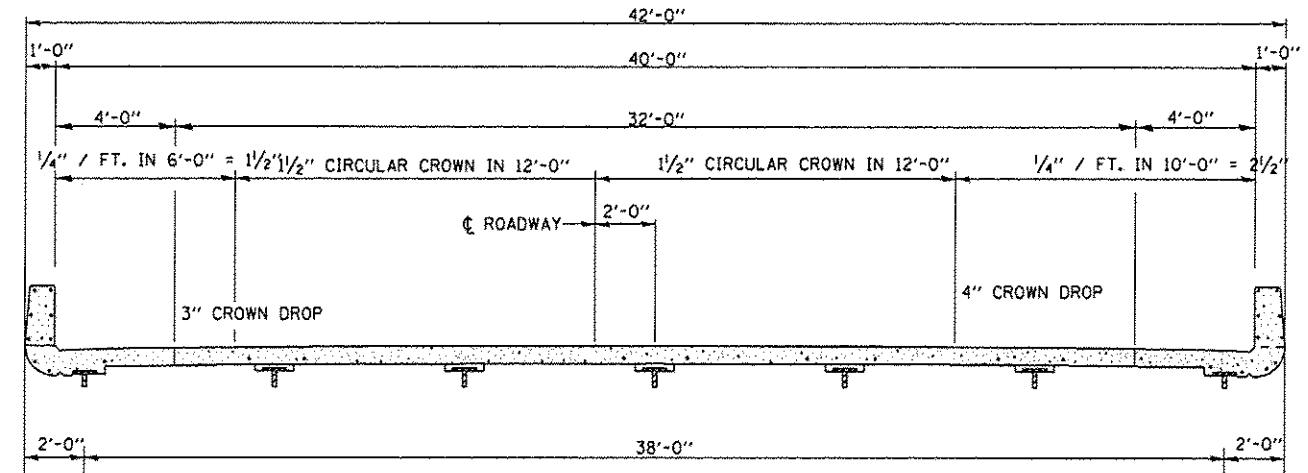
TYPICAL ELEVATION



PLAN

GENERAL NOTE:

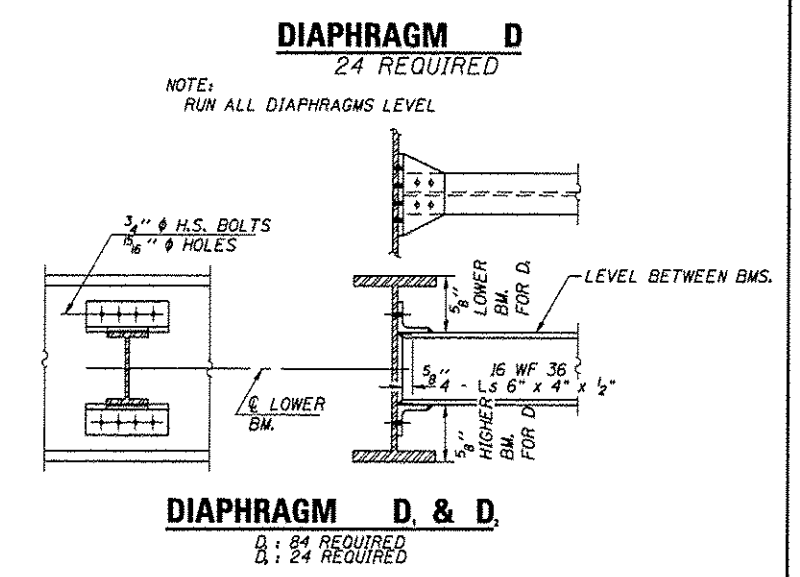
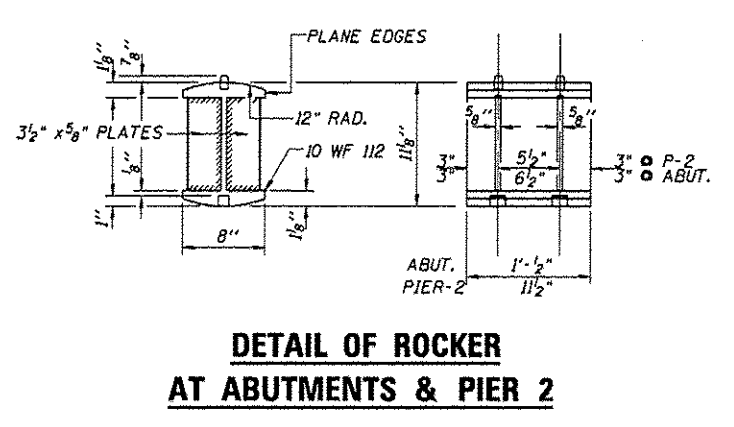
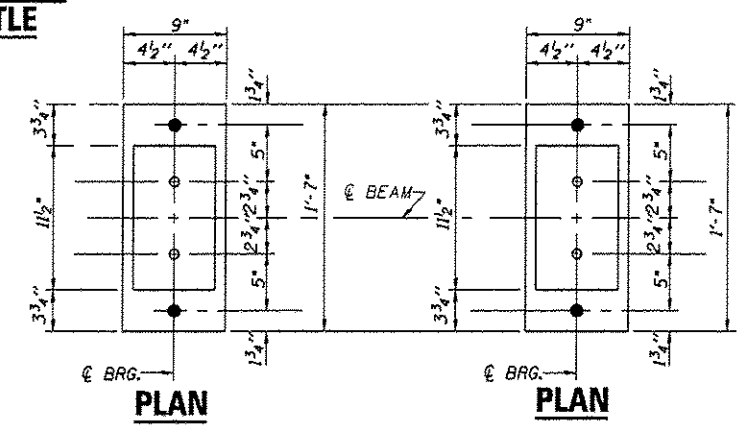
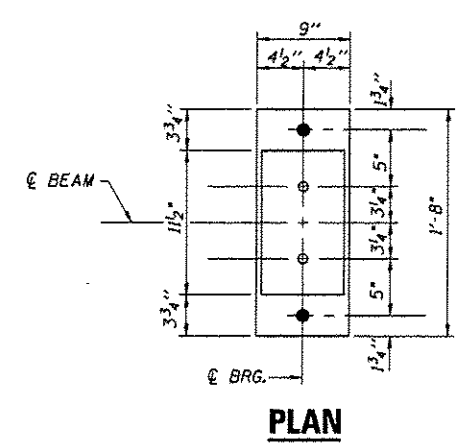
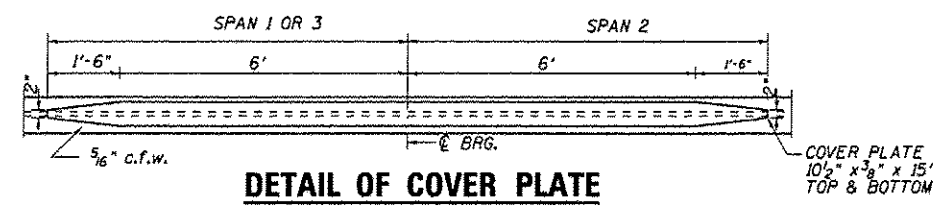
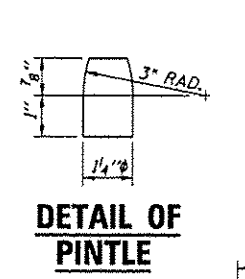
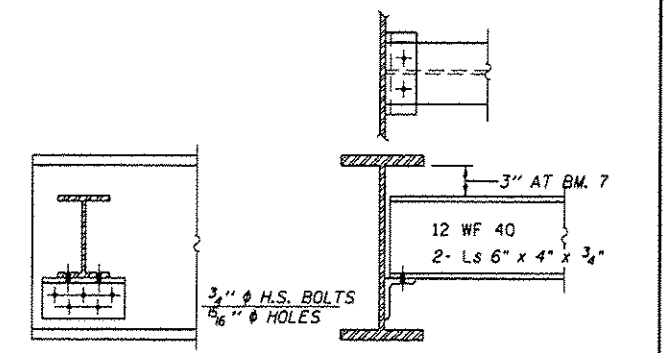
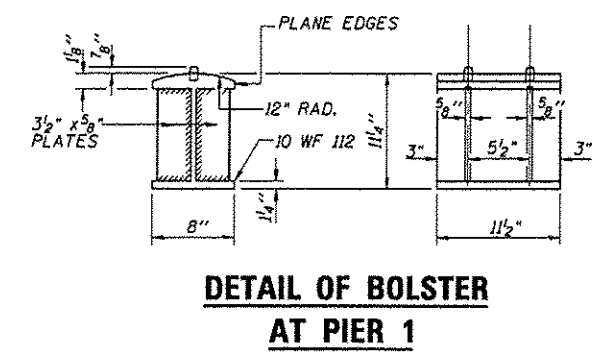
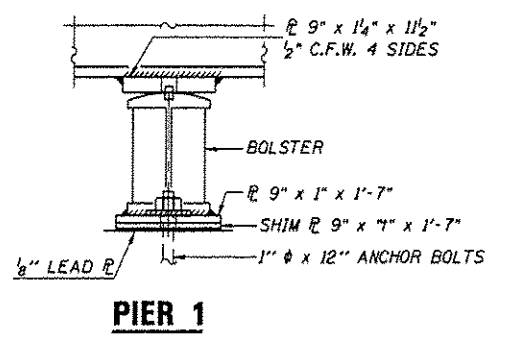
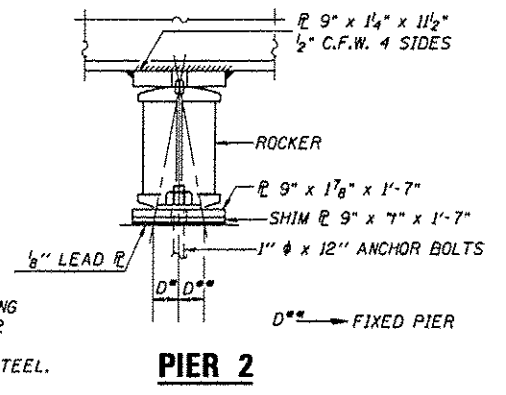
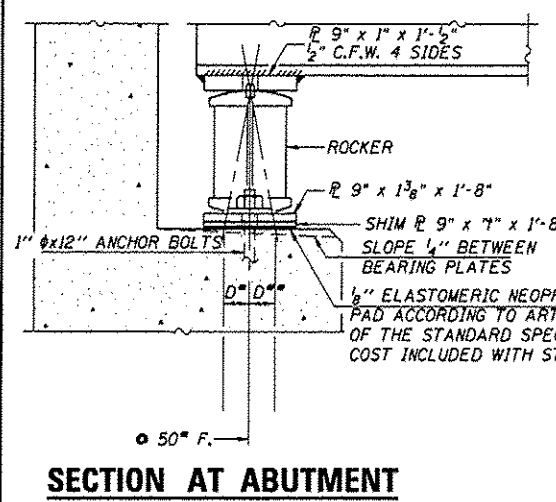
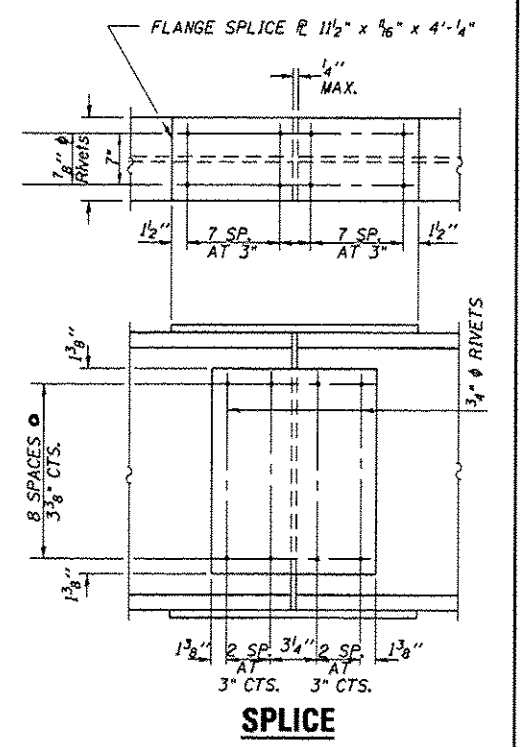
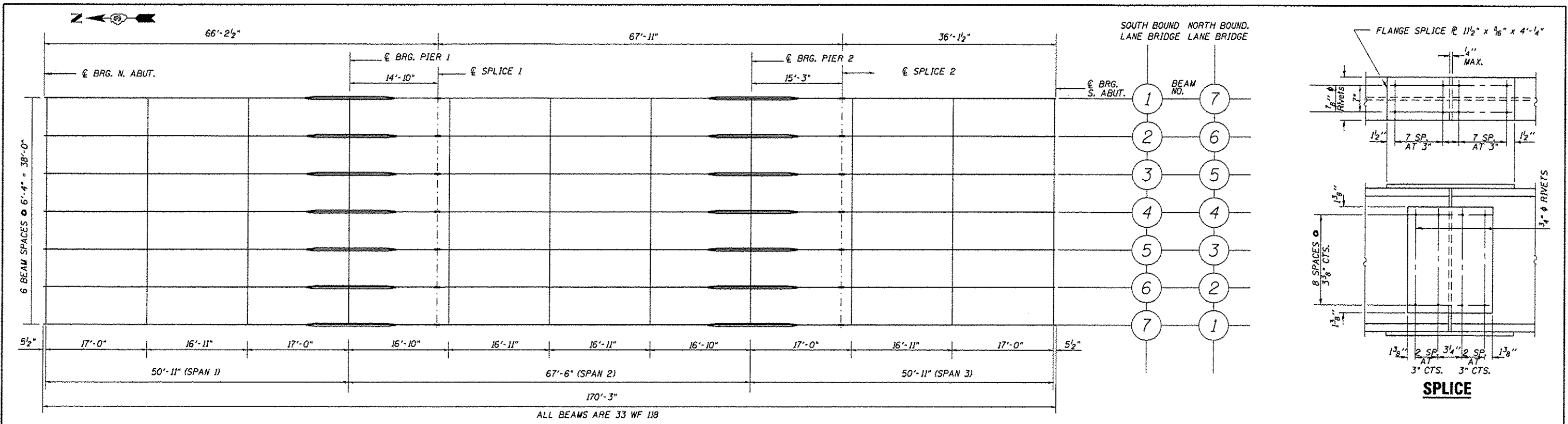
SN 038-0005 IS LOCATION 1 AND SN 038-0006 IS LOCATION 2
 THE CONTRACTOR SHALL BE REQUIRED TO SECURE WASTE CONTAINERS THAT REMAIN ON THE JOB SITE. THIS WILL ENTAIL THAT ALL WASTE CONTAINERS CAN NOT BE MOVED OR OPENED DURING NON-WORKING HOURS.
 WORKING DAYS SHALL BE CHARGED UNTIL THE CONTRACTOR/SUBCONTRACTOR LISCENSED TO DISPOSE OF LEAD PAINT REDIDUE HAS REMOVED THE WASTE MATERIAL FROM THE JOB SITE ACCORDING TO ALL FEDERAL, STATE AND LOCAL LAWS AND ORDINANCES. IF THE CONTRACTOR/SUBCONTRACTOR LISCENSED TO DISPOSE OF LEAD PAINT RESIDUE FAILS TO DISPOSE OF PAINT RESIDUES ON OR BEFORE THE SPECIFIED COMPLETION DATE, LIQUIDATED DAMAGES SHALL BE CHARGED PER CALENDAR DAY ACCORDING TO ARTICLE 108.09 OF THE STANDARD SPECIFICATIONS UNTIL SUCH TIME THAT THE PAINT RESIDUES HAVE BEEN PROPERLY DISPOSED OF.
 THE SSPC-QP1 AND SSPC-QP2 "PAINTING CONTRACTOR CERTIFICATIONS" WILL BE REQUIRED FOR THIS PROJECT.
 CLEANING AND PAINTING OF THE EXISTING STRUCTURAL STEEL SHALL BE AS SPECIFIED IN THE SPECIAL PROVISION FOR "CLEANING AND PAINTING EXISTING STEEL STRUCTURES". ALL EXTERIOR AND INTERIOR SURFACES OF THE BEAMS, DIAPHRAGMS, BEARING ASSEMBLIES AND ALL OTHER ASSOCIATED STEEL COMPONENTS SHALL BE CLEANED PER "NEAR WHITE BLAST CLEANING - SSPC-SPIO. ALL EXISTING STEEL SHALL BE PAINTED ACCORDING TO THE REQUIREMENTS OF "PAINT SYSTEM 1 - OZ/E/U. THE COLOR OF THE FINAL FINISH COAT FOR ALL INTERIOR STEEL SURFACES SHALL BE "GRAY, MUNSELL NO. 5B 7/1". THE COLOR OF THE FINAL FINISH COAT FOR THE EXTERIOR, BOTTOM FLANGE AND BEARING ASSEMBLIES OF THE FASCIA BEAMS SHALL BE "GREEN, MUNSELL NO. 7.5G 4/8.
 THE CONTRACTOR SHALL FURNISH AND INSTALL A MINIMUM OF TWO (2) AIR MONITORS FOR THIS PROJECT TO MONITOR ABRASIVE BLASTING AT THIS SITE. SEE SPECIAL PROVISION FOR "CONTAINMENT AND DISPOSAL OF LEAD PAINT CLEANING RESIDUES".



TYPICAL CROSS SECTION

TOTAL BILL OF MATERIAL

ITEM	UNIT	SUPER	SUB	TOTAL
CLEANING AND PAINTING STEEL BRIDGE NO. 1	L SUM	1		1
CONTAINMENT AND DISPOSAL OF LEAD PAINT CLEANING RESIDUES NO. 1	L SUM	1		1
BRIDGE CLEANING AND PAINTING WARRANTY NUMBER 1	L SUM	1		1
CLEANING AND PAINTING STEEL BRIDGE NO. 2	L SUM	1		1
CONTAINMENT AND DISPOSAL OF LEAD PAINT CLEANING RESIDUES NO. 2	L SUM	1		1
BRIDGE CLEANING AND PAINTING WARRANTY NUMBER 2	L SUM	1		1



FOR INFORMATION ONLY

FILE NAME *	USER NAME * Potelyj	DESIGNED - R WOODSHANK	REVISED -	STATE OF ILLINOIS DEPARTMENT OF TRANSPORTATION	STRUCTURAL STEEL DETAILS STRUCTURE NO'S. 038-0005 AND 038-0006	F.A.I. RTE.	SECTION	COUNTY	TOTAL SHEETS	SHEET NO.	
cd:\pwwork\pwwork\potelyj\d034255\036610-shr-steel.dgn	10-shr-steel.dgn	DRAWN - E JAUCH	REVISED -			57	(38-5VB)BP	IRROQUOIS	9	9	
PLOT SCALE * 100.0000' / 1"		CHECKED - Y PATEL	REVISED -			CONTRACT NO. 66D10					
PLOT DATE * 12/9/2013		DATE -	REVISED -			ILLINOIS FED. AID PROJECT					

SCALE: SHEET NO. 2 OF 2 SHEETS STA. TO STA.