

1. COVER SHEET
2. GENERAL NOTES
3. SUMMARY OF QUANTITIES
4. TYPICAL SECTIONS
5. TRAFFIC CONTROL AND PROTECTION, STANDARD 701400 (SPECIAL)
6. DETAILS
7. MAINLINE SCHEDULE

STANDARDS

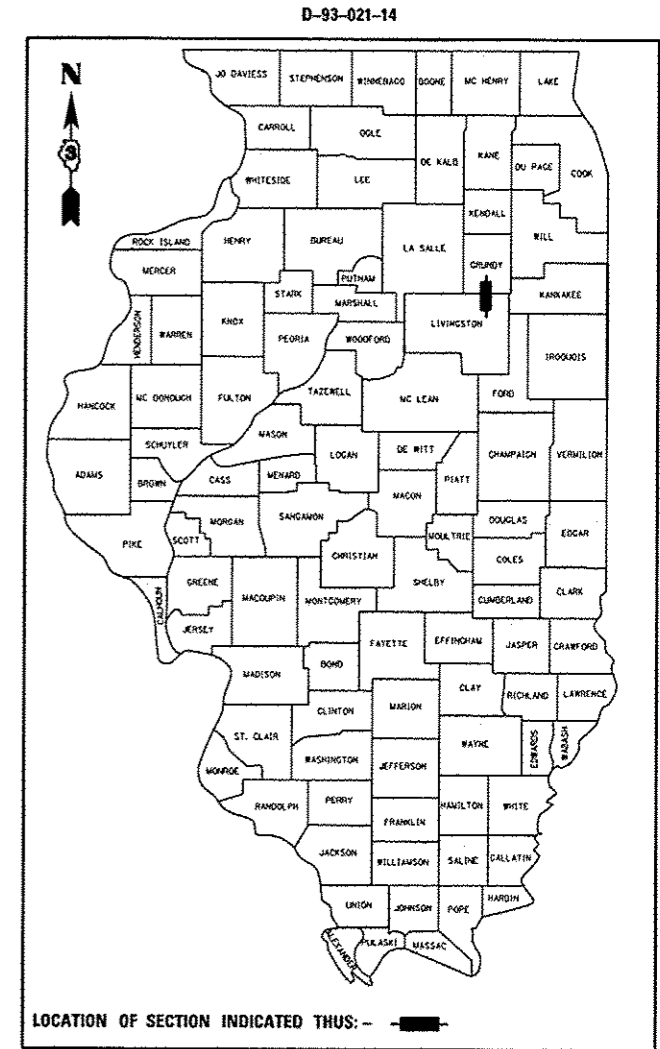
000001-06	STANDARD SYMBOLS, ABBREVIATIONS AND PATTERNS
001006	DECIMAL OF AN INCH AND OF A FOOT
642001-02	SHOULDER RUMBLE STRIPS, 16 INCH
701101-04	OFF-ROAD OPERATIONS MULTILANE, 15' (4.5 m) TO 24" (600 mm) FROM PAVEMENT EDGE
701106-02	OFF-ROAD OPERATIONS, MULTILANE, MORE THAN 15' (4.5 m) AWAY
701401-08	LANE CLOSURE, FREEWAY/EXPRESSWAY
701411-08	LANE CLOSURE, MULTILANE, AT ENTRANCE OR EXIT RAMP FOR SPEEDS 45 MPH
701901-03	TRAFFIC CONTROL DEVICES

STATE OF ILLINOIS
DEPARTMENT OF TRANSPORTATION
DIVISION OF HIGHWAYS
PROPOSED
HIGHWAY PLANS

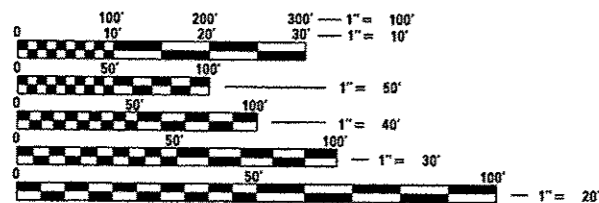
F.A.I. ROUTE 55 (I-55)
SECTIONS (53-1, 32-3)I-4
PROJECT: ACHSIP-0055(404)
HOT-MIX ASPHALT SHOULDER REPAIR
GRUNDY & LIVINGSTON COUNTIES

C-93-027-14

F.A.I. RTE.	SECTION	COUNTY	TOTAL SHEETS	SHEET NO.
55	(53-1, 32-3)I-4	VARIOUS	7	1
		ILLINOIS	CONTRACT NO. 66D33	



LOCATION OF SECTION INDICATED THUS: — ■ —

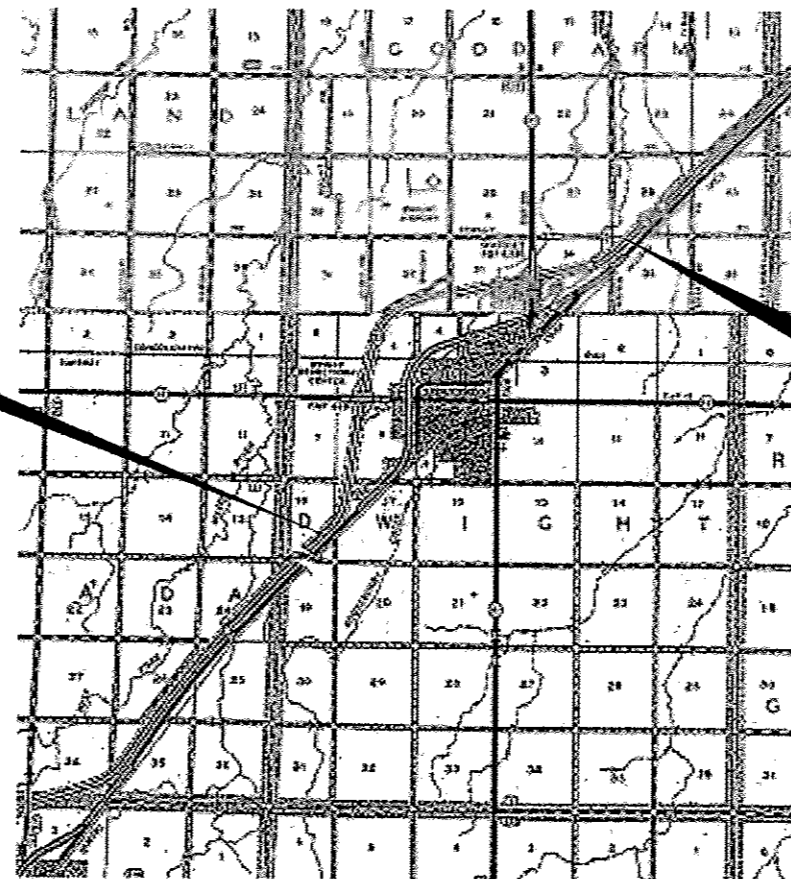


FULL SIZE PLANS HAVE BEEN PREPARED USING STANDARD ENGINEERING SCALES. REDUCED SIZED PLANS WILL NOT CONFORM TO STANDARD SCALES. IN MAKING MEASUREMENTS ON REDUCED PLANS, THE ABOVE SCALES MAY BE USED.

J.U.L.I.E.
 JOINT UTILITY LOCATION INFORMATION FOR EXCAVATION
 1-800-892-0123
 OR 811

DISTRICT 3 NO. (815) 434-6131
 PROJECT ENGINEER: JOE KANNEL, P.E.
 UNIT CHIEF: SCOTT A. FERGUSON

CONTRACT NO. 66D33



BEGIN PROJECT
 STA. 655 + 49.51 BK =
 STA. 150 + 05.99 AH

END PROJECT
 STA. 460 + 00.00
 1.2 MI NORTH OF IL 47

GROSS LENGTH = 30,994.01 FT. = 5.87 MILES
 NET LENGTH = 30,994.01 FT. = 5.87 MILES

LOCATION MAP
 NOT TO SCALE

FUNCTIONAL CLASSIFICATION
RURAL INTERSTATE
 2013 ADT = 19200
 P.V. = 73.17% M.U. = 23.44% S.U. = 3.39%

STATE OF ILLINOIS
 DEPARTMENT OF TRANSPORTATION
 DIVISION OF HIGHWAYS

SUBMITTED: *Paul A. Coates* 12-10-13
 DEPUTY DIRECTOR OF HIGHWAYS, REGION ENGINEER

John D. Baranzelli 12-24-14
 ENGINEER OF DESIGN AND ENVIRONMENT

Omer Osman 12-24-14
 DIRECTOR OF HIGHWAYS, CHIEF ENGINEER

PRINTED BY THE AUTHORITY
OF THE STATE OF ILLINOIS

GENERAL NOTES

PLAN DIMENSIONS RELATIVE TO THE EXISTING ROADWAY HAVE BEEN TAKEN FROM EXISTING PLANS AND ARE SUBJECT TO NOMINAL CONSTRUCTION VARIATIONS. IT SHALL BE THE CONTRACTOR'S RESPONSIBILITY TO MAKE NECESSARY ADJUSTMENTS PRIOR TO CONSTRUCTION OR ORDERING OF MATERIALS. SUCH VARIATIONS SHALL NOT BE CAUSE FOR ADDITIONAL COMPENSATION FOR A CHANGE IN THE SCOPE OF THE WORK. HOWEVER, THE CONTRACTOR WILL BE PAID FOR THE QUANTITY FURNISHED AT THE UNIT PRICE BID FOR THE WORK.

ANY REFERENCE TO A STANDARD IN THESE PLANS SHALL BE INTERPRETED TO MEAN THE EDITION AS INDICATED BY THE SUBNUMBER SHOWN IN THE LIST OF STANDARDS OR THE COPY INCLUDED IN THESE PLANS.

THE CONTRACTOR SHALL CONTACT JULIE AT LEAST 48 HOURS PRIOR TO EXCAVATION TO DETERMINE WHICH UTILITIES ARE IN THE AREA.

ALL EXCAVATED MATERIAL, WHICH INCLUDES DIGGING OR GRADING OF ANY SOIL OR FILL MATERIAL, WITH THE EXCEPTION OF AGGREGATE FILLS, MUST BE LEFT ON, OR INCORPORATED WITHIN, THE IDOT RIGHT OF WAY DUE TO ENVIRONMENTAL DOCUMENTATION REQUIREMENTS.

EXCAVATED MATERIALS SHALL BE DISPOSED OF AT LOCATIONS DIRECTED BY THE ENGINEER. ANY SUCH DISPOSAL SHALL NOT CREATE AND UNSIGHTLY OR OBJECTIONABLE APPEARANCE OR DETRACT FROM THE NATURAL TOPOGRAPHIC FEATURES WITHOUT WRITTEN PERMISSION FROM THE ENGINEER.

THE FOLLOWING RATES OF APPLICATION HAVE BEEN USED IN CALCULATING PLAN QUANTITIES:

HMA RESURFACING	112	LBS / SQ YD / IN
-----------------	-----	------------------

BITUMINOUS MATERIALS (PRIME COAT) RATES	
TYPE OF SURFACE TO BE PRIMED	RESIDUAL ASPHALT RATE LB/SQ FT (KG/SQ M)
MILLED HMA, AGED NON-MILLED HMA, MILLED CONCRETE, NON-MILLED CONCRETE & TINED CONCRETE	0.05
FOG COAT BWTWEEN HMA LIFTS, IL-4.75 & BRICK	0.025

DATE: 12-6-13

PREPARED BY: *Don Beaulieu*
DISTRICT STUDIES & PLANS ENGINEER

EXAMINED BY: *Herb Gray*
DISTRICT CONSTRUCTION ENGINEER

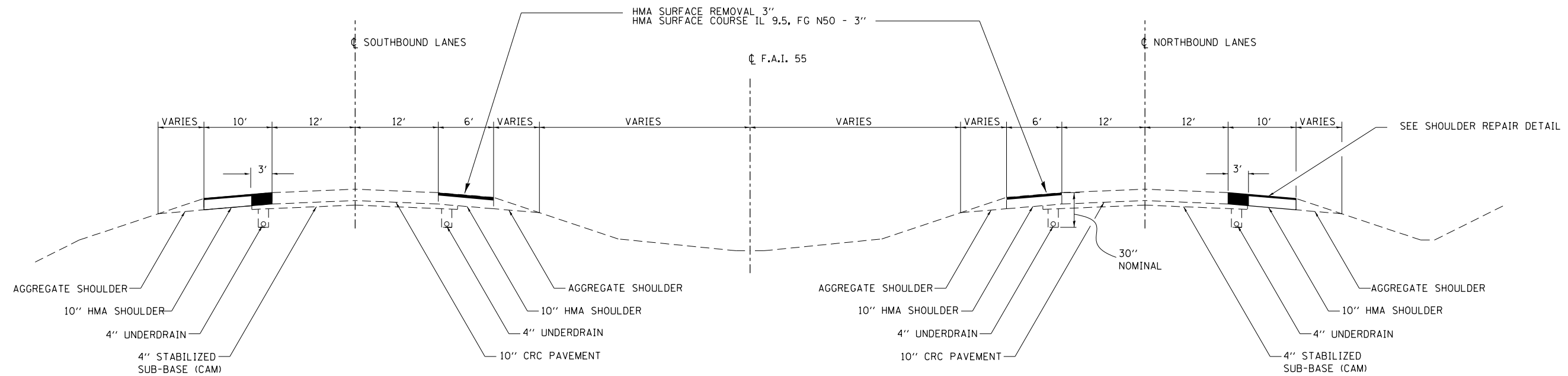
[Signature]
DISTRICT MATERIALS ENGINEER

Bruce A. Harker
DISTRICT OPERATIONS ENGINEER

FILE NAME *	USER NAME * #USER*	DESIGNED - DBS	REVISED -	STATE OF ILLINOIS DEPARTMENT OF TRANSPORTATION	GENERAL NOTES	FAA RTE:	SECTION	COUNTY	TOTAL SHEETS	SHEET NO.	
#FILE#	PLOT SCALE * #SCALE*	DRAWN - DBS	REVISED -			55	153-1, 32-31-4	VARIOUS	7	2	
	PLOT DATE * #DATE*	CHECKED -	REVISED -			SCALE: SHEET 1 OF 1 SHEETS STA. TO STA.					
		DATE - FEBRUARY 2013	REVISED -			ILLINOIS FED. AID PROJECT CONTRACT NO. 66033					

CODE NO.	ITEM	UNIT	TOTAL QUANTITY		
			CONSTR. CODE	GRUNDY	LIVINGSTON
			FED / STATE	90% FED / 10% ST.	90% FED / 10% ST.
			ROADWAY		
			0021	0021	0021
			RURAL	RURAL	RURAL
20200600	EXCAVATING AND GRADING EXISTING SHOULDER	UNIT	1128	564	564
44000161	HOT-MIX ASPHALT SURFACE REMOVAL, 3"	SQ YD	81174	40,587	40,587
44000189	HOT-MIX ASPHALT SURFACE REMOVAL, 10"	SQ YD	17866	8,933	8,933
40603082	HOT-MIX ASPHALT BINDER COURSE, IL-19.0, FG, N50	TON	7004	3,502	3,502
40603415	HOT-MIX ASPHALT SURFACE COURSE, IL-9.5, FG, N50	TON	16638	8,319	8,319
64200116	SHOULDER RUMBLE STRIPS, 16 INCH	FOOT	120589		120,589
67100100	MOBILIZATION	L SUM	1	0.5	0.5
70100420	TRAFFIC CONTROL AND PROTECTION, STANDARD 701411	EACH	8	4	4
70103815	TRAFFIC CONTROL SURVEILLANCE	CAL DA	28	14	14
70106800	CHANGEABLE MESSAGE SIGN	CAL MO	2	1	1
X0326880	MESSAGE BOARD VEHICLE DRIVER	HOURL	100	50	50
X0326907	PORTABLE, VEHICLE MOUNTED, CHANGEABLE MESSAGE SIGN	CAL MO	2	1	1
X4060110	BITUMINOUS MATERIALS (PRIME COAT)	POUND	84764	42,382	42,382
X7010805	TRAFFIC CONTROL AND PROTECTION, STANDARD 701401 (SPECIAL)	L SUM	1	0.5	0.5
Z0030850	TEMPORARY INFORMATION SIGNING	SQ FT	42	21	21

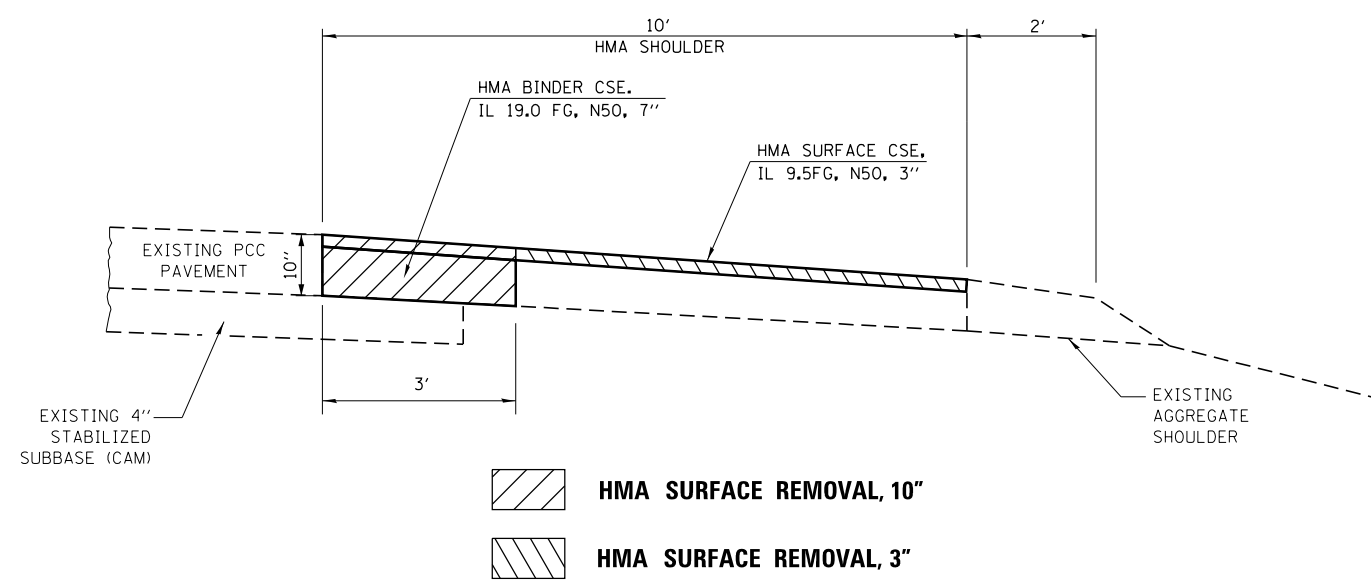
Rev.



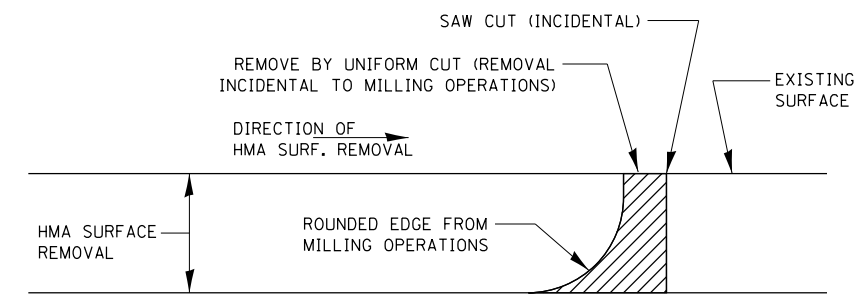
TYPICAL SECTION

STA. 655+49.51 TO STA 460+00.00

	HMA BINDER FOR SHOULDERS BOTTOM LIFTS	HMA SURFACE FOR SHOULDERS TOP LIFTS
PG GRADE	PG64-22	PG64-22
DESIGN AIR VOIDS	4.0% @ N50	4.0% @ N50
MIXTURE COMPOSITION	IL 19.0 FG	IL 9.5 FG
FRICTION AGGREGATE		MIXTURE C
DENSITY CONTROL METHOD	CORES	GROWTH CURVE

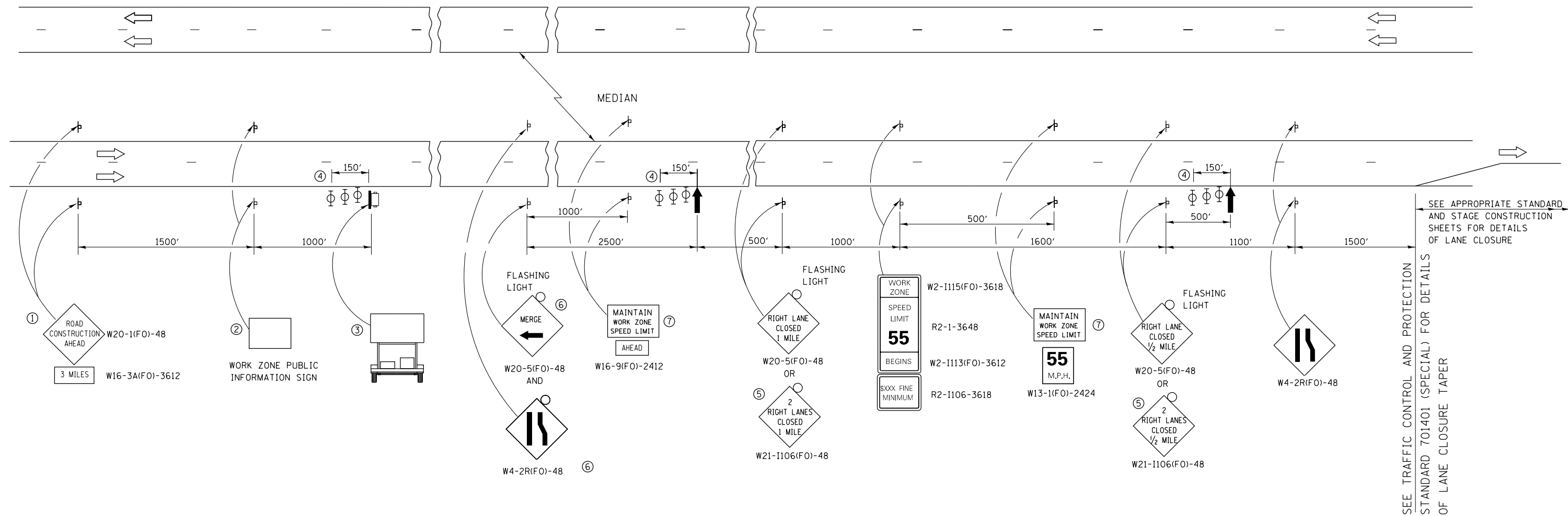


HMA SHOULDER REPAIR DETAIL



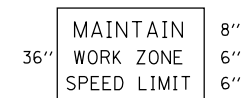
NOTE:
WHEN MILLING OPERATIONS PRODUCE A ROUNDED EDGE, THEN A SAW CUT SHALL BE USED TO MANUFACTURE A PERPENDICULAR EDGE AS SHOWN IN THE DETAIL. THE ENGINEER SHALL BE THE SOLE JUDGE CONCERNING THE USE OF THIS DETAIL

HMA DETAIL AT BUTT JOINTS



- ① THE ROAD CONSTRUCTION AHEAD SIGN SHALL BE LOCATED 3 MILES IN ADVANCE OF THE PROJECT LIMITS.
- ② THE MESSAGE AND SIZE OF THE WORK ZONE PUBLIC INFORMATION SIGN SHALL BE AS SPECIFIED BY THE DEPARTMENT.
- ③ TO BE PLACED IN THE MEDIAN WHEN FEASIBLE. THE MESSAGE BOARD SHALL BE USED TO DISPLAY STATUS OF LANES WITHIN THE PROJECT. THE PRIMARY MESSAGES SHALL BE:
"RIGHT LANE CLOSED" / " x MILES AHEAD"
"LEFT LANE CLOSED" / " x MILES AHEAD"
"ALL LANES OPEN"
- ④ THREE, TYPE II BARRICADES, DRUMS, OR VERTICAL BARRICADES AT 50' CENTERS.
- ⑤ THIS SIGN SHALL BE USED WHEN 2 LANES ARE CLOSED.
- ⑥ WHEN THE LEFT LANE IS CLOSED, SWITCH THESE TWO SIGNS AND THE DIRECTION OF THE MERGE ARROW.

⑦ 48"x36" FLUORESCENT ORANGE SIGN WITH BLACK LETTERS.
48"



- ↑ ARROW BOARD
- ☐ PORTABLE CHANGEABLE MESSAGE SIGN
- ⊥ SIGN
- ⊕ TYPE II BARRICADE, DRUM, OR VERTICAL BARRICADE WITH MONODIRECTIONAL FLASHING LIGHT

GENERAL NOTE:

THIS STANDARD IS USED WHERE AT ANY TIME A LANE IS CLOSED ON A FREEWAY/EXPRESSWAY.

WHEN THE LEFT LANE IS CLOSED, LEFT LANE CLOSED SIGNS SHALL BE SUBSTITUTED FOR THE RIGHT LANE CLOSED SIGNS.

THE FIRST TWO SIGNS AND THE MESSAGE BOARD ARE STATIONARY. THE OTHER SIGNS AND ARROWBOARDS SHALL BE MOVED AS NECESSARY TO MAINTAIN THE REQUIRED DISTANCE FROM THE START OF THE LANE CLOSURE TAPER(S).

WHEN WORK OPERATIONS ARE NEAR MAJOR INTERCHANGES THE CONTRACTOR SHALL FURNISH ADDITIONAL MESSAGE BOARDS AND UTILIZED AT THE DIRECTION OF THE ENGINEER.

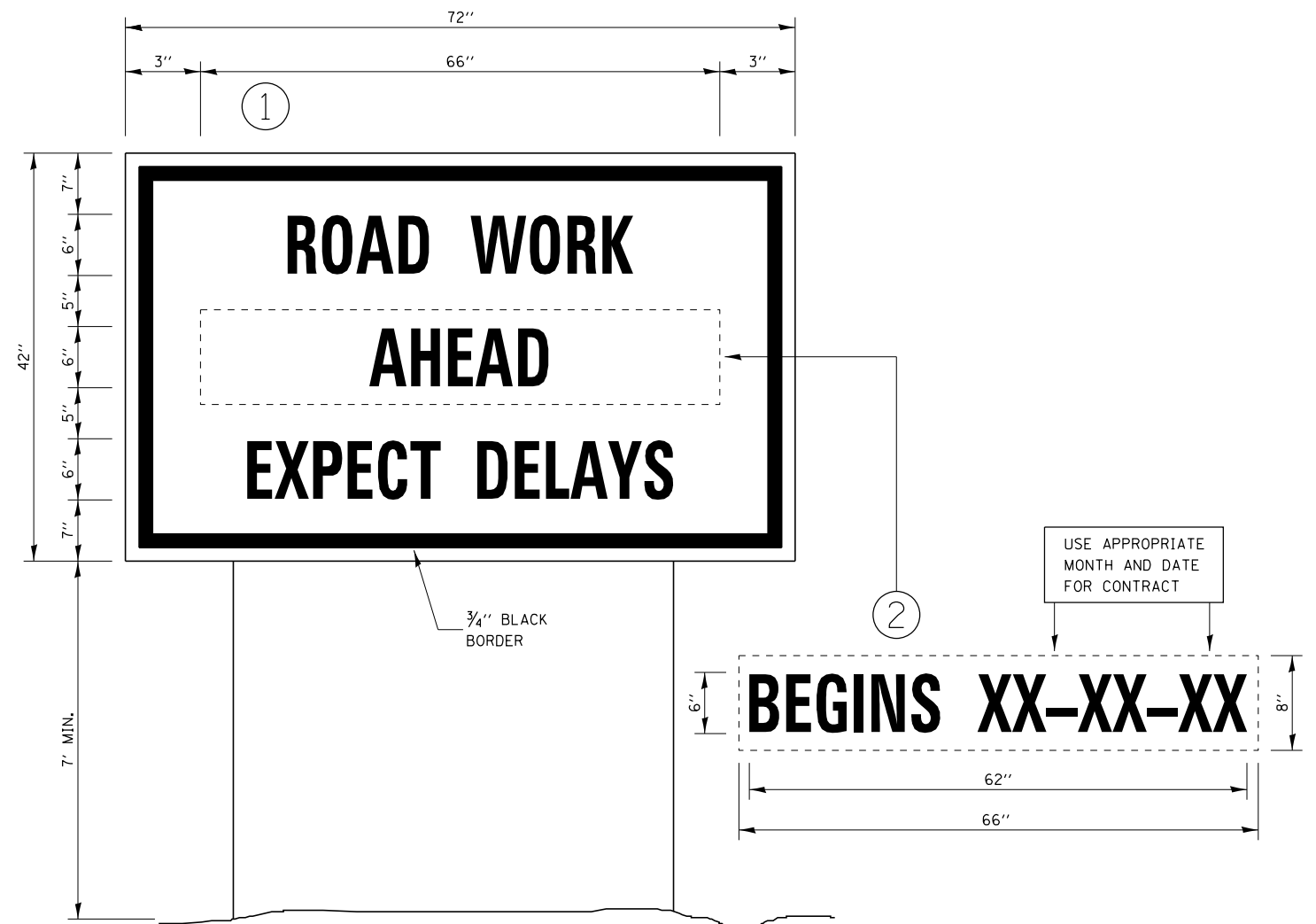
FILE NAME =	USER NAME = smthbd	DESIGNED - RLW	REVISED -
c:\pwwork\pwwork\smthbd\d0365386\d366033-shd-details.dgn		DRAWN - RLW	REVISED -
	PLOT SCALE = 100.0000' / 1in.	CHECKED -	REVISED -
	PLOT DATE = 12/6/2013	DATE - FEBRUARY 2013	REVISED -

**STATE OF ILLINOIS
DEPARTMENT OF TRANSPORTATION**

**TRAFFIC CONTROL AND PROTECTION,
STANDARD 701400 (SPECIAL)**

SCALE: SHEET 1 OF 1 SHEETS STA. TO STA.

F.A.I. RTE.	SECTION	COUNTY	TOTAL SHEETS	SHEET NO.
55	(53-1, 32-3)I-4	VARIOUS	7	5
			CONTRACT NO. 66D33	
ILLINOIS FED. AID PROJECT				



TEMPORARY INFORMATION SIGNING

NOTES:

1. USE 6" D BLACK LETTERING ON FLOURESENT ORANGE BACKGROUND.
2. ERECT SIGNS AT LOCATIONS IN ADVANCE OF THE "ROAD CONSTRUCTION AHEAD" SIGNS AS DIRECTED BY THE ENGINEER.
3. ERECT SIGN ① WITH INSTALLED PANEL ② A MINIMUM OF ONE WEEK PRIOR TO THE START OF THE LANE CLOSURE.
4. REMOVE PANEL ② ON THAT DATE.
5. SEE SPECIAL PROVISION "TEMPORARY INFORMATION SIGNING" FOR ADDITIONAL INFORMATION.
6. WILL BE PAID FOR PER SQ FT AS "TEMPORARY INFORMATION SIGNING". EACH SIGN = 21 SQ FT AND THE DATE PANEL ② WILL NOT BE MEASURED SEPARATELY FOR PAYMENT.

FILE NAME =	USER NAME = smthbd	DESIGNED - DBS	REVISED - _____
et:\pw\work\pwidot\smthbd\0365386\0366033-sh-t-details.dgn		DRAWN - DBS	REVISED - _____
	PLOT SCALE = 100.0000' / in.	CHECKED - _____	REVISED - _____
	PLOT DATE = 12/6/2013	DATE - FEBRUARY 2013	REVISED - _____

STATE OF ILLINOIS
DEPARTMENT OF TRANSPORTATION

DETAILS

SCALE: SHEET 1 OF 1 SHEETS STA. TO STA.

F.A.I. RTE.	SECTION	COUNTY	TOTAL SHEETS	SHEET NO.
55	(53-1, 32-3)1-4	VARIOUS	7	6
			CONTRACT NO. 66D33	
ILLINOIS FED. AID PROJECT				

I-55 MAINLINE SHOULDER TABLE

			EXC & GR EXISTING SHOULDER	HMA BINDER CSE. IL 19.0 FG N50	HMA SURF. CSE. IL 9.5 FG N50	HMA SURF. REM. 3"	HMA SURF. REM. 10"	SHLDR RUMBLE STRIPS 16"	BIT PRIME COAT	
I-55 NORTHBOUND			LENGTH	UNIT	TON	TON	SQ YD	SQ YD	FOOT	LBS
STA EQ. 655+49.51 BK = 150+05.99 AH										
START PROJECT	INSIDE SHLDR	STA 655+49.51 TO STA 265+00.00	11494.01	114.94		1287.3	7662.7		11494.01	3448.2
	INSIDE SHLDR	STA 265+00.00 TO STA 275+50.00	1050						1050	
	INSIDE SHLDR	STA 275+50.00 TO STA 437+42.00	16192	161.92		1813.5	10794.7		16192	4857.6
	INSIDE SHLDR	STA 437+42.00 TO STA 441+00.00	358						358	
	INSIDE SHLDR	STA 441+00.00 TO STA 460+00.00	1900	19		212.8	1266.7		1900	570
	OUTSIDE SHLDR	STA 655+49.51 TO STA 226+35.00	7629.01	76.29	996.9	1424.1	5933.7	2543	7629.01	9536.3
	OUTSIDE SHLDR	STA 229+38.00 TO STA 260+54.00	3116	31.16	407.2	581.7	2423.6	1038.7	3116	3895
	OUTSIDE SHLDR	STA 268+04.00 TO STA 283+00.00	1496						1496	
	OUTSIDE SHLDR	STA 283+00.00 TO STA 376+58.00	9358	93.58	1222.8	1746.8	7278.4	3119.3	9358	11697.5
	OUTSIDE SHLDR	STA 381+88.00 TO STA 411+82.00	2994	29.94	391.2	558.9	2328.7	998	2994	3742.5
	OUTSIDE SHLDR	STA 419+32.00 TO STA 437+42.00	1810	18.1	236.5	337.9	1407.8	603.3	1810	2262.5
	OUTSIDE SHLDR	STA 437+42.00 TO STA 441+00.00	358						358	
	OUTSIDE SHLDR	STA 441+00.00 TO STA 460+00.00	1900	19	248.3	354.7	1477.8	633.3	1900	2375
NORTHBOUND TOTAL			59655.02	563.93	3502.9	8317.7	40574.1	8935.6	59655.02	42384.6
I-55 SOUTHBOUND										
START PROJECT	INSIDE SHLDR	STA 655+49.51 TO STA 265+00.00	11494.01	114.94		1287.3	7662.7		11494.01	3448.2
	INSIDE SHLDR	STA 265+00.00 TO STA 275+50.00	1050						1050	
	INSIDE SHLDR	STA 275+50.00 TO STA 437+98.00	16248	162.48		1819.8	10832		16248	4874.4
	INSIDE SHLDR	STA 437+98.00 TO STA 440+96.00	298						298	
	INSIDE SHLDR	STA 440+96.00 TO STA 460+00.00	1904	19.04		213.2	1269.3		1904	571.2
	OUTSIDE SHLDR	STA 655+49.51 TO STA 220+24.00	7018.01	70.18	917	1310	5458.5	2339.3	7018.01	8772.5
	OUTSIDE SHLDR	STA 227+74.00 TO STA 260+62.00	3288	32.88	429.6	613.8	2557.3	1096	3288	4110
	OUTSIDE SHLDR	STA 263+66.00 TO STA 265+00.00	134	1.34	17.5	25	104.2	44.7	134	167.5
	OUTSIDE SHLDR	STA 265+00.00 TO STA 283+00.00	1800						1800	
	OUTSIDE SHLDR	STA 283+00.00 TO STA 373+22.00	9022	90.22	1178.9	1684.1	7017.1	3007.3	9022	11277.5
	OUTSIDE SHLDR	STA 380+72.00 TO STA 414+71.00	3399	33.99	444.1	634.5	2643.7	1133	3399	4248.8
	OUTSIDE SHLDR	STA 417+74.00 TO STA 437+98.00	2024	20.24	264.5	377.8	1574.2	674.7	2024	2530
	OUTSIDE SHLDR	STA 437+98.00 TO STA 440+96.00	298						298	
	OUTSIDE SHLDR	STA 440+96.00 TO STA 460+00.00	1904	19.04	248.8	355.4	1480.9	634.7	1904	2380
SOUTHBOUND TOTAL			59881.02	564.35	3500.4	8320.9	40599.9	8929.7	59881.02	42380.1
GRAND TOTAL			119536.04	1128.28	7003.3	16638.6	81174	17865.3	119536.04	84764.7

I-55 RAMP SHOULDER TABLE

			EXC & GR EXISTING SHOULDER	HMA BINDER CSE. IL 19.0 FG N50	HMA SURF. CSE. IL 9.5 FG N50	HMA SURF. REM. 3"	HMA SURF. REM. 10"	SHLDR RUMBLE STRIPS 16"	BIT PRIME COAT
LOCATION	STATION	LENGTH	UNIT	TON	TON	SQ YD	SQ YD	FOOT	LBS
IL 17 NE OUTSIDE	STA 24+47.00 TO STA 35+00.00	1053						1053	
TOTAL		1053	0	0	0	0	0	1053	0