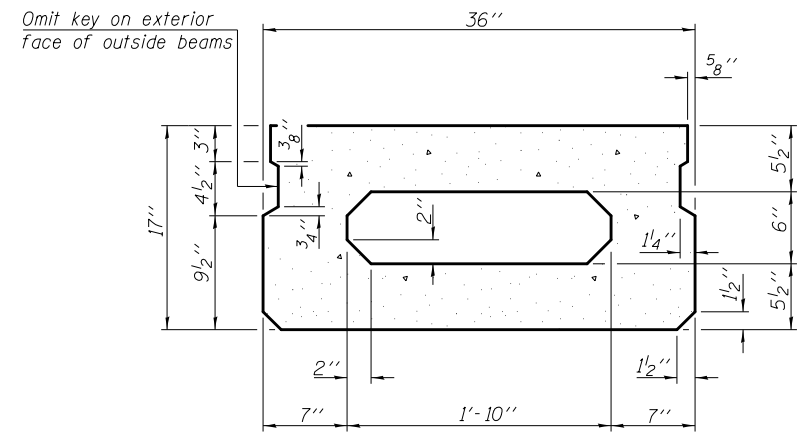
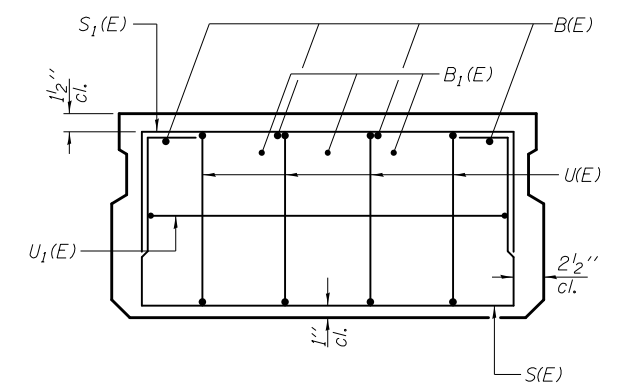


SECTION A-A

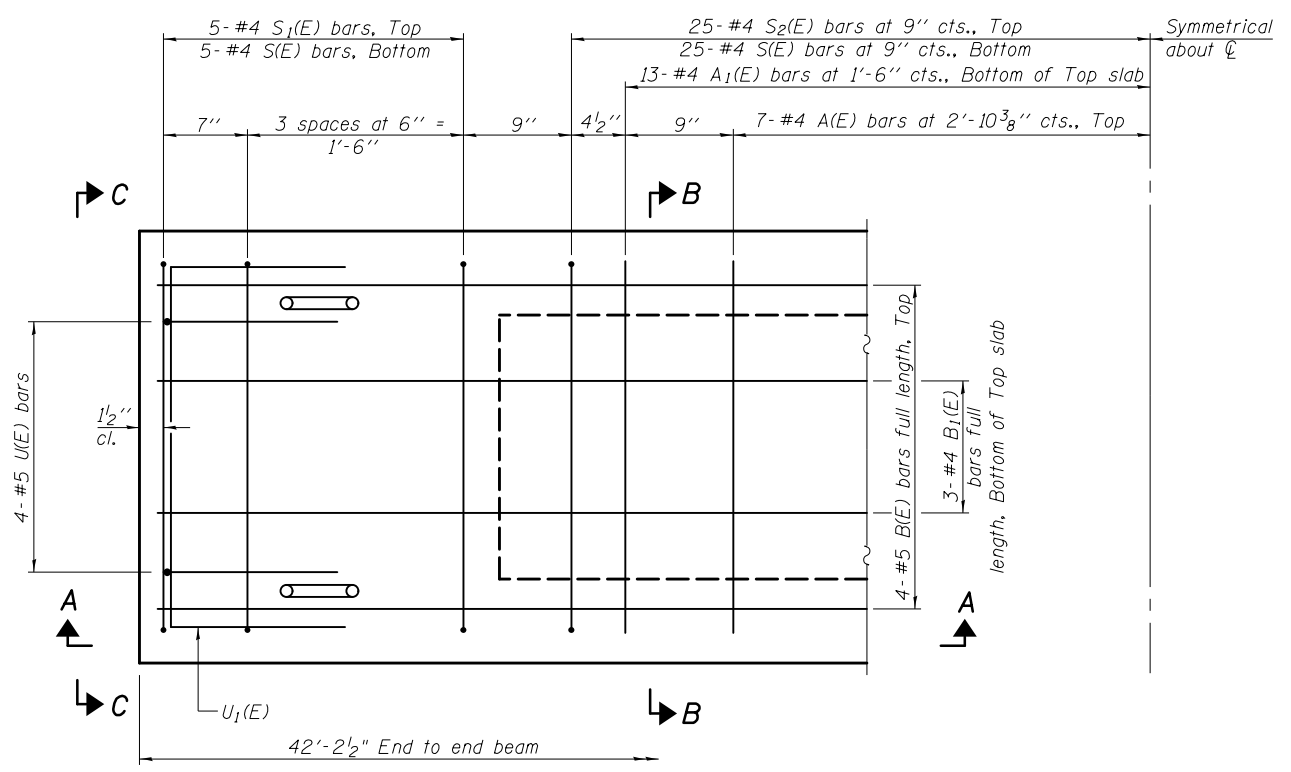


SECTION B-B
(Showing dimensions)



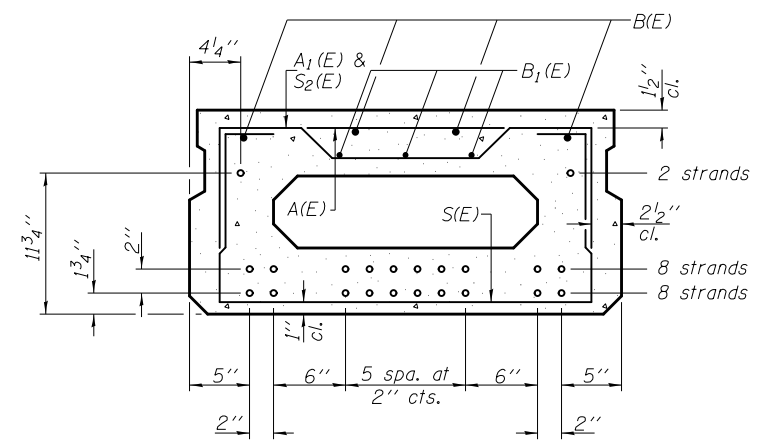
VIEW C-C

Notes:
 Typical Interior Beam shown. See Section thru Fascia Beam on Sheet 5 and 11 of 17 for reinforcement required at rail post locations.
 See Sheet 4 of 17 for rail post spacing.
 See Sheet 2 of 17 for Shear Key Clamping Details at Stage Construction Joint.
 See Sheet 12 of 17 for anchorage device cast with beam.



PLAN VIEW

Note: Spacing of S(E) and S2(E) bars may be adjusted up to 4" in the immediate area of the transverse tie diaphragms to miss the block outs for the transverse ties.



SECTION B-B
(Showing reinforcement and permissible strand locations)

Note: Place the number of strands specified in each row symmetrically about the centerline of beam in the permissible strand locations shown.

MINIMUM BAR LAP
 #4 bar = 2'-0"
 #5 bar = 2'-6"

BAR LIST
ONE INTERIOR BEAM ONLY
 (For information only)

Bar	No.	Size	Length	Shape
A(E)	13	#4	2'-7"	—
A1(E)	25	#4	2'-10"	—
B(E)	4	#5	39'-2"	—
B1(E)	3	#4	39'-2"	—
S(E)	49	#4	5'-9"	□
S1(E)	10	#4	4'-3"	□
S2(E)	49	#4	4'-6"	□
U(E)	8	#5	3'-8"	□
U1(E)	2	#4	5'-0"	□

Note: See sheet 11 of 17 for additional details and Bill of Material.

PD-1736-0

7-1-10

FILE NAME =	USER NAME = keysrb	DESIGNED CME	REVISED -
et:\pw\work\p\idot\keysrb\0134590\0740003-70432-010-BM1.dgn		CHECKED GJB	REVISED -
	PLOT SCALE = 0:2.0000 '1' / in.	DRAWN MML	REVISED -
CB PROJECT NO. 08049-7	PLOT DATE = 1/24/2014	CHECKED MCB	REVISED -

STATE OF ILLINOIS
DEPARTMENT OF TRANSPORTATION

17" x 36" PPC DECK BEAM
STRUCTURE NO. 074-0003

SHEET NO. 10 OF 18 SHEETS

CB Coombe-Bloxdorf P.C.
 - CIVIL ENGINEERS -
 - STRUCTURAL ENGINEERS -
 - LAND SURVEYORS -
 Design Firm License No. 184-002703

F.A.P. RTE.	SECTION	COUNTY	TOTAL SHEETS	SHEET NO.
721	(115BR)BR	PIATT	39	21
CONTRACT NO. 70432				
ILLINOIS FED. AID PROJECT				