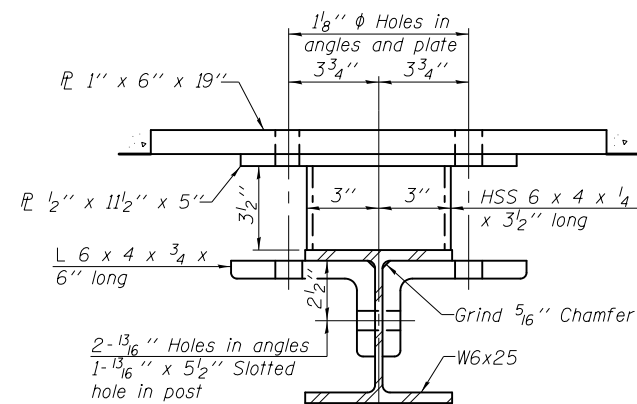
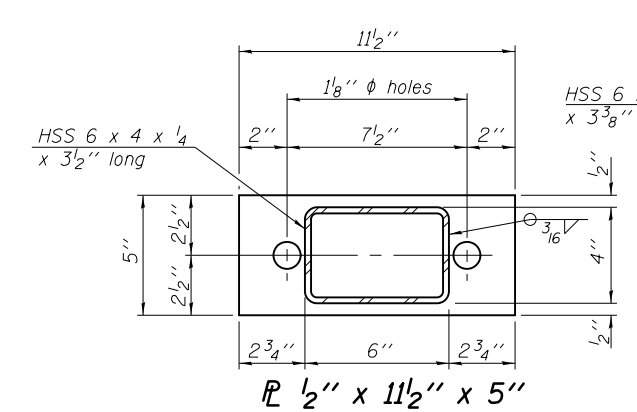


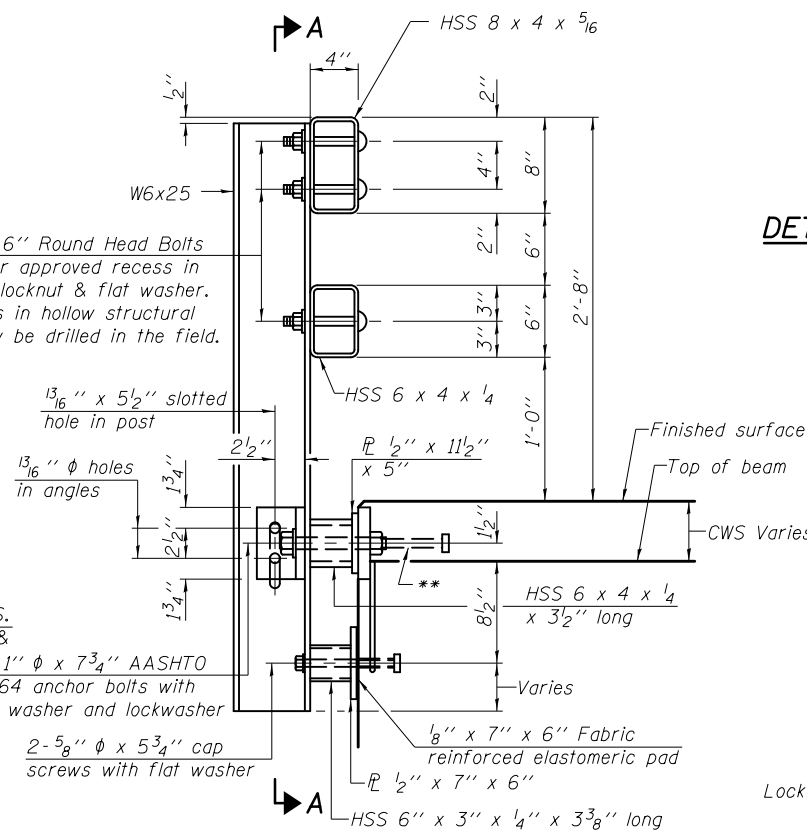
SECTION A-A



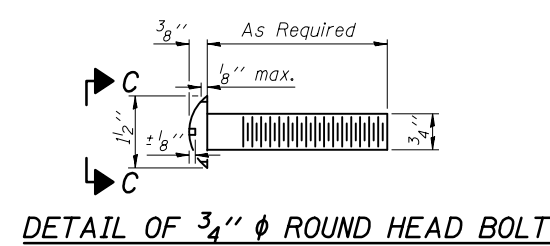
SECTION B-B



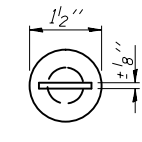
SECTION C-C



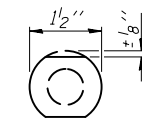
SECTION AT RAIL POST



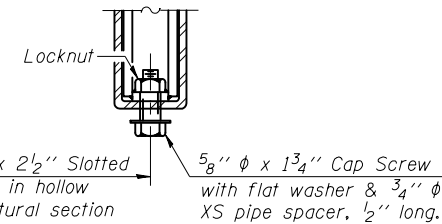
DETAIL OF 3/4" ϕ ROUND HEAD BOLT



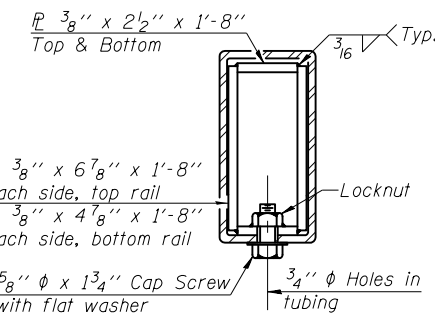
VIEW C-C



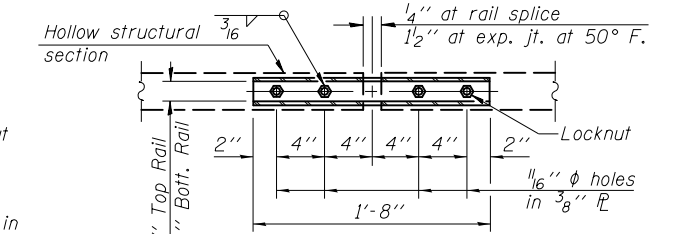
VIEW D-D



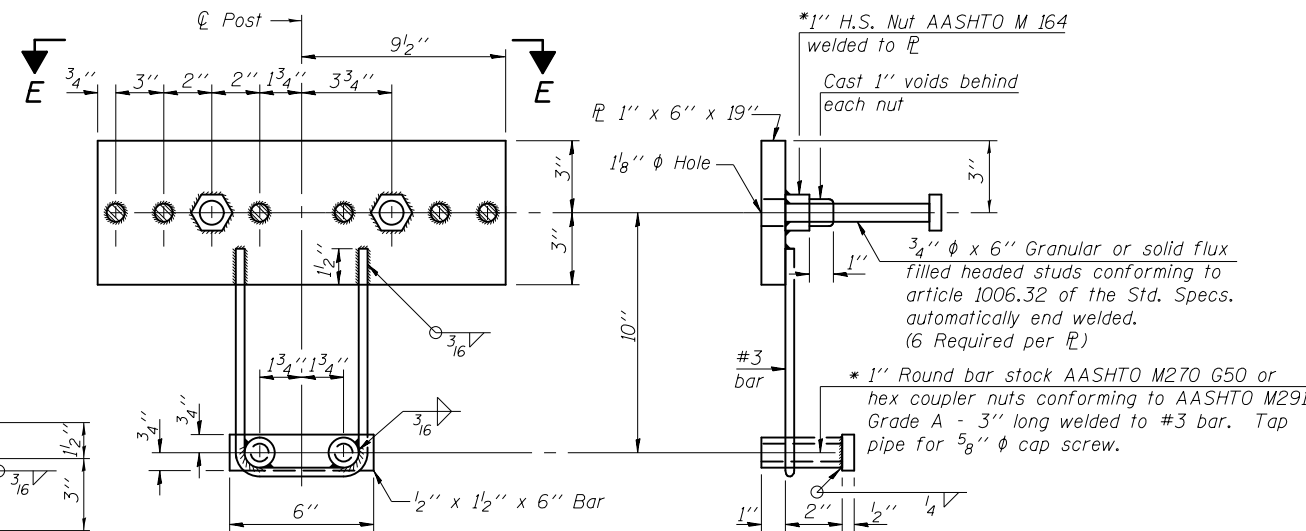
RAIL SPLICE CONNECTION AT EXPANSION JT.



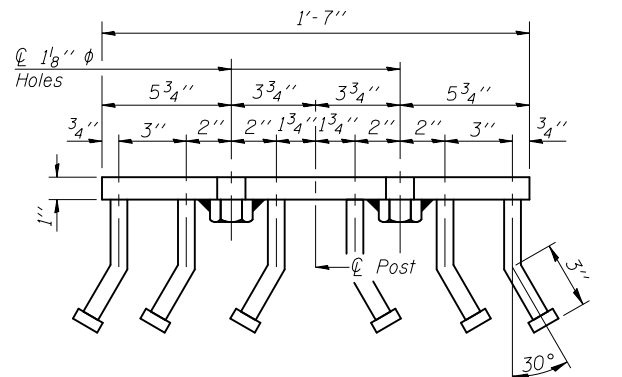
SECTION AT RAIL SPLICE



PLAN-BOTT. SPLICE TYPICAL



ANCHOR DEVICE



VIEW E-E

Notes:
 All field drilled holes shall be coated with an approved zinc rich paint before erection.
 For multi-span bridges, sufficient 1/4" x 6" x 1'-2" galvanized steel shims shall be provided to align rail between adjacent spans. Cost included with Steel Railing, Type SM.
 Steel rail elements shall be galvanized according to Article 509.05 of the Standard Specifications.
 ** The studs of the anchor devices shall be placed below the top reinforcement bars and the outermost longitudinal reinforcement bar shall be placed directly above the studs of the rail post anchor device.

BILL OF MATERIAL

Item	Unit	Quantity
Steel Railing, Type SM	Foot	85

R-34CWS

7-1-10

(6'-3" Maximum Post Spacing) (5" minimum to 7 1/8" maximum CWS thickness)

FILE NAME	USER NAME	DESIGNED	REVISIONS
ce:\pwwork\pwwork\keysrb\d0134590\0740003-70432-012-RL.dgn	keysrb	CME	-
		GJB	-
		MMML	-
		MCB	-

STATE OF ILLINOIS
DEPARTMENT OF TRANSPORTATION

STEEL RAILING, TYPE SM WITH CONCRETE WEARING SURFACE
STRUCTURE NO. 074-0003

SHEET NO. 12 OF 18 SHEETS

Coombes-Bloxdorf P.C.
 - CIVIL ENGINEERS -
 - STRUCTURAL ENGINEERS -
 - LAND SURVEYORS -
 Design Firm License No. 184-002703

F.A.P. RTE.	SECTION	COUNTY	TOTAL SHEETS	SHEET NO.
721	(115BR)BR	PIATT	39	23

CONTRACT NO. 70432
ILLINOIS FED. AID PROJECT