

STATE OF ILLINOIS
 DEPARTMENT OF TRANSPORTATION
 DIVISION OF HIGHWAYS

**PROPOSED
 HIGHWAY PLANS**

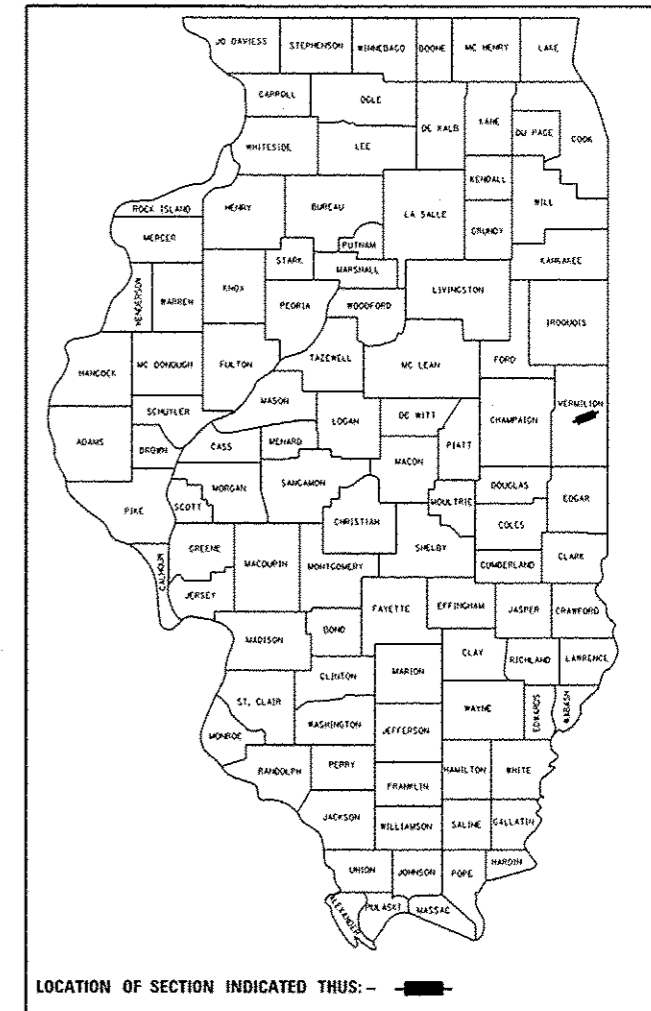
F.A.S. ROUTE 1512 (US-150)
 SECTION: 36 BDR

**BRIDGE DECK REPAIRS
 MIDDLE FORK VERMILION RIVER WEST OF DANVILLE
 VERMILION COUNTY**

C-95-002-12

F.A.S. RTE.	SECTION	COUNTY	TOTAL SHEETS	SHEET NO.
1512	36 BDR	VERMILION	34	1
		ILLINOIS	CONTRACT NO. 70965	

D-95-002-12

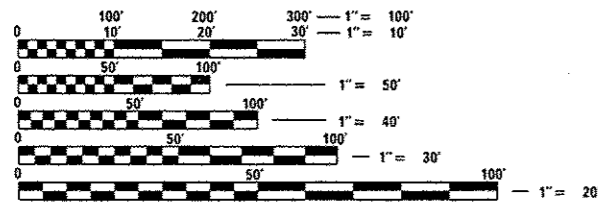


FOR INDEX OF SHEETS, SEE SHEET 2
 FOR SUMMARY OF QUANTITIES, SEE SHEETS 3-5

**CURRENT
 TRAFFIC DATA**

2011 ADT = 3,550
 2031 ADT = 4,100
 PU+PC % = 92.0
 SU % = 5.8
 MU% = 2.2

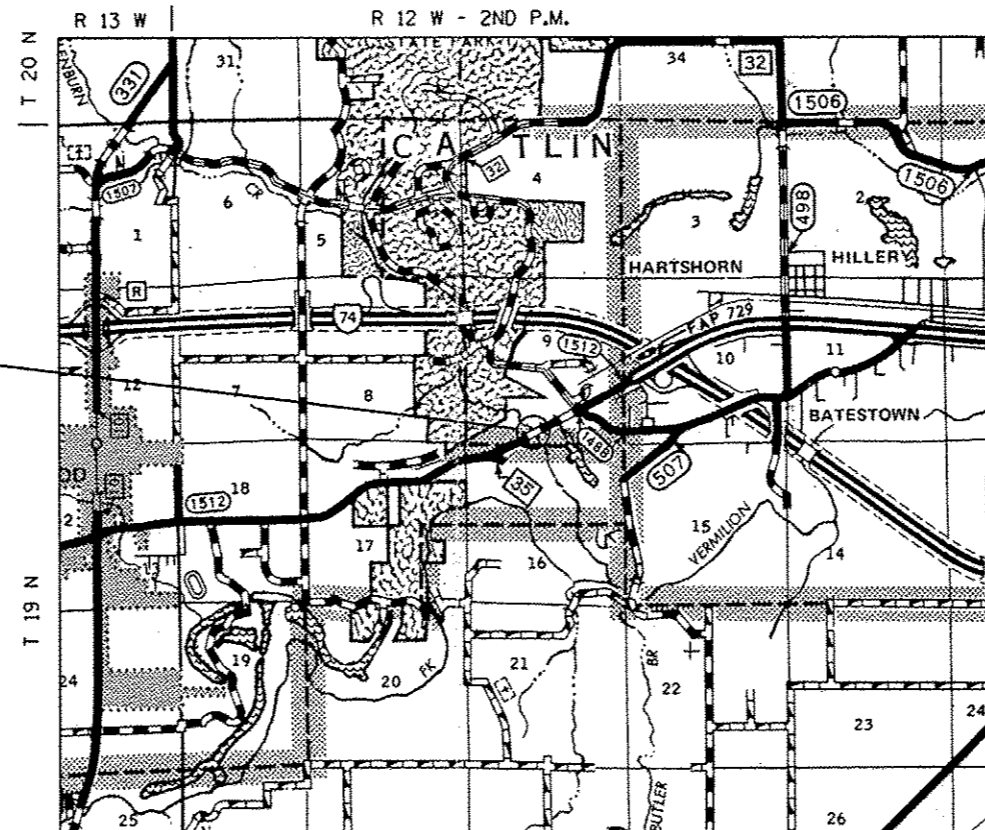
**DESIGN DESIGNATION
 MAJOR COLLECTOR**



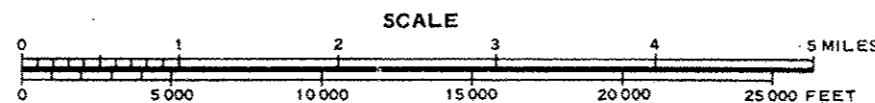
FULL SIZE PLANS HAVE BEEN PREPARED USING STANDARD ENGINEERING SCALES. REDUCED SIZED PLANS WILL NOT CONFORM TO STANDARD SCALES. IN MAKING MEASUREMENTS ON REDUCED PLANS, THE ABOVE SCALES MAY BE USED.

J.U.L.I.E.
 JOINT UTILITY LOCATION INFORMATION FOR EXCAVATION
 1-800-892-0123
 OR 811 CATLIN TOWNSHIP

PROJECT ENGINEER: TIM BRANDENBURG
 PROJECT MANAGER: GARY SIMS
 217-465-4181
 CONTRACT NO. 70965



EXISTING S.N. 092-0050
 F.A.S. 1512 (US-150)
 STATION 1362+32.35
 OVER MIDDLE FORK
 VERMILION RIVER
 PROPOSED B-SMART
 STRUCTURE REPAIRS



GROSS LENGTH = 404.25 FT. = 0.08 MILE
 NET LENGTH = 404.25 FT. = 0.08 MILE

STATE OF ILLINOIS
 DEPARTMENT OF TRANSPORTATION
 DIVISION OF HIGHWAYS

SUBMITTED OCTOBER 4 2013
Joseph S. Crowe
 DEPUTY DIRECTOR OF HIGHWAYS, REGION ENGINEER
Jan 24 2014
John D. Baranzelli, P.E.
 ENGINEER OF DESIGN AND ENVIRONMENT
Jan 24 2014
Omer Osman, P.E.
 DIRECTOR OF HIGHWAYS, CHIEF ENGINEER

**PRINTED BY THE AUTHORITY
 OF THE STATE OF ILLINOIS**